

United States Department of the Interior  
National Park Service

AUG 27 2002

1246

**NATIONAL REGISTER OF HISTORIC PLACES  
REGISTRATION FORM**

This form is for use in nominating or requesting determinations for individual properties and districts. See instructions in How to Complete the National Register of Historic Places Registration Form (National Register Bulletin 16A). Complete each item by marking "x" in the appropriate box or by entering the information requested. If any item does not apply to the property being documented, enter "N/A" for "not applicable." For functions, architectural classification, materials, and areas of significance, enter only categories and subcategories from the instructions. Place additional entries and narrative items on continuation sheets (NPS Form 10-900a). Use a typewriter, word processor, or computer, to complete all items.

**1. Name of Property**

historic name Irwin Consolidated School

other names/site number

**2. Location**

street & number North Street

not for publication N/A

city or town Irwin

vicinity N/A

state Iowa code IA county Shelby code 165 zip code 51446

**3. State/Federal Agency Certification**

As the designated authority under the National Historic Preservation Act of 1966, as amended, I hereby certify that this  nomination  request for determination of eligibility meets the documentation standards for registering properties in the National Register of Historic Places and meets the procedural and professional requirements set forth in 36 CFR Part 60. In my opinion, the property  meets  does not meet the National Register Criteria. I recommend that this property be considered significant  nationally  statewide  locally.

(  See continuation sheet for additional comments.)

Howell J. Soike  
Signature of certifying official

August 28, 2002  
Date

**STATE HISTORICAL SOCIETY OF IOWA**

State or Federal agency and bureau

In my opinion, the property  meets  does not meet the National Register criteria.

(  See continuation sheet for additional comments.)

Signature of commenting or other official

Date

State or Federal agency and bureau

Name of Property or District  
County, State

Irwin Consolidated School  
Shelby County, Iowa

**4. National Park Service Certification**

I hereby certify that this property is:

entered in the National Register

See continuation sheet.

determined eligible for the  
National Register

See continuation sheet.

determined not eligible for the  
National Register

removed from the National Register

other (explain):

*Daniel J. Vician 10/24/2002*

*[Signature]* \_\_\_\_\_  
Signature of the Keeper

\_\_\_\_\_  
Date of Action

**5. Classification**

**Ownership of Property**

(Check as many boxes as apply.)

- private
- public-local
- public-State
- public-Federal

**Category of Property**

(Check only one box.)

- building(s)
- district
- site
- structure
- object

**Number of Resources within Property**

Contributing	Noncontributing	
<u>1</u>	<u>    </u>	buildings
<u>    </u>	<u>    </u>	sites
<u>    </u>	<u>    </u>	structures
<u>    </u>	<u>1</u>	objects
<u>1</u>	<u>1</u>	Total

Number of contributing resources previously listed in the National Register: 0

Name of related multiple property listing (enter "N/A" if property is not part of a multiple property listing):

Public Schools for Iowa: Growth and Change, 1848-1966

Name of Property or District  
County, State

Irwin Consolidated School  
Shelby County, Iowa

**6. Function or Use**

Historic Functions (enter categories from instructions)

Cat: EDUCATION Sub: School

Current Functions (enter categories from instructions)

Cat: EDUCATION Sub: School

**7. Description**

Architectural Classification (enter categories from instructions):

Cat: LATE 19<sup>th</sup> AND 20<sup>th</sup> CENTURY REVIVALS Sub:

Cat: LATE 19<sup>th</sup> AND 20<sup>th</sup> CENTURY AMERICAN MOVEMENTS Sub:

Materials (enter categories from instructions):

foundation CONCRETE

roof ASPHALT

walls BRICK

other

Narrative Description (Describe the historic and current condition of the property on one or more continuation sheets.)

**8. Statement of Significance**

**Applicable National Register Criteria**

(Mark "x" in one or more boxes for the criteria qualifying the property for National Register listing.)

- A Property is associated with events that have made a significant contribution to the broad patterns of our history.
- B Property is associated with the lives of persons significant in our past.
- C Property embodies the distinctive characteristics of a type, period, or method of construction or represents the work of a master, or possesses high artistic values, or represents a significant and distinguishable entity whose components lack individual distinction.
- D Property has yielded, or is likely to yield information important in prehistory or history.

**Criteria Considerations**

(Mark "x" in all the boxes that apply.)

- A owned by a religious institution or used for religious purposes
- B removed from its original location
- C a birthplace or a grave
- D a cemetery
- E a reconstructed building, object, or structure
- F a commemorative property
- G less than 50 years of age or achieved significance within the past 50 years

**Areas of Significance** (enter categories from instructions):

EDUCATION

**Period of Significance**

1917-1952

**Significant Dates**

1917

**Significant Person** (complete if Criterion B is marked above)

N/A

**Cultural Affiliation**

**Architect/Builder**

Gernandt, W. F.

**Narrative Statement of Significance** (Explain the significance of the property on one or more continuation sheets.)

United States Department of the Interior  
National Park Service

**NATIONAL REGISTER OF HISTORIC PLACES  
CONTINUATION SHEET**

Section 7 Page 1 name of property: Irwin Consolidated School  
county, state: Shelby County, Iowa

---

**DESCRIPTION SUMMARY**

The Irwin Consolidated School, built in 1917, is a two-story, concrete brick-clad building that served as a consolidated school for northeast Shelby County. With the exception of entrance and window alterations, the exterior remains largely intact. The interior has a high degree of integrity, retaining its original floor plan and original interior features such as cloakrooms in the classrooms, plumbing and finishes in the rest rooms, a dark room, oak cabinets, and oak doors.

**GENERAL DESCRIPTION**

The Irwin Consolidated School is located on North Street between Eva and Ann Streets in the town of Irwin. The school building is part of a larger school complex located at the north edge of town atop a large hill. A junior-senior high school building, built in 1957, is located approximately 200 feet north of the consolidated school building. A large blacktop area to the east of the school is used as a playground and has a single metal-pipe swing set. A band of deciduous trees is located on the west side of the school.

The original school, built in 1917, is three stories with a rectangular ground plan. The building is three bays wide by three bays deep and is 68' deep by 110' wide. Simple brick piers divide the main (south) façade into a central entrance bay and two flanking bays of windows. The base of each pier is splayed outward, buttress-like, and features an inset of limestone and decorative terra cotta tiles. The main entrance is emphasized with a concrete entablature, multiple limestone bands, limestone carvings of lions and acanthus leaves, and a limestone tablet inscribed, "Consolidated School". More diminutive brick piers separate the windows, which are grouped in bands of six, in the outer bays. The east and west facades have a central bay that contains a secondary entrance. The southernmost bay of the east and west façade contains no fenestration in the second and third stories. The rear façade has four bays-the two inner bays containing windows and the two outer bays being solid brick. A small one-story brick wing, that contains the boiler and fan rooms, is located on the northeast corner of the structure.

The building has a "fireproof" structural system of reinforced concrete slabs, beams, girders and columns. The outer walls are faced in red "Rug Face" brick that was provided by the school board (Edwards 1916:1). All of the original multi-pane windows have been replaced with modern metal sash and glass block. The entry way has been downsized with glass block and Perma-stone and the original front doors have been replaced with modern metal fire doors.

**INTERIOR ARRANGEMENT**

The main rooms in the building are arranged on the north and south side of a central hallway. Small rooms, once used for the superintendent's office, the nurse's office and a library, are located at each end of the hallway. The main entrance contains a small vestibule with double doors that open to a double return staircase and a single door on either side that leads to a staircase to the basement level. The hallways in the upper two floors are finished with terrazzo and encaustic tile flooring, plaster walls with an oak dado, and round arch vestibules. The hallway in the basement was finished with a painted concrete floor and plastered walls.

The basement level housed specialty classes such as domestic science, the first floor contained grades 1-6, and the second floor contained high school grade levels. The basement level is accessed via two staircases from the front vestibule. A separate entrance to the basement level was designed to restrict public access to the 61' by 40' gymnasium,

United States Department of the Interior  
National Park Service

**NATIONAL REGISTER OF HISTORIC PLACES  
CONTINUATION SHEET**

Section 7 Page 2 name of property: Irwin Consolidated School  
county, state: Shelby County, Iowa

---

which was located in the center of the building. The basement level also contained space for domestic science, arts, and manual training, which were located in classrooms on the east, west and south sides of the gym. Spaces on the east and west sides were used for toilets, lockers, and mechanical functions such as the boiler. The south side, which was exposed to the most light, contained the domestic science and manual training classrooms.

The first floor contained elementary grade classrooms and a small room used as a board room/hospital ward/teachers lounge. First and second grade rooms, located on the north side of the building, had cloak rooms in the classroom with multi-pane clerestory windows. Remaining classrooms contained "ventilated steel wardrobes" along one wall. All of the classrooms have maple tongue and groove flooring, plaster walls, and oak door with multi-pane windows.

Construction drawings show that the north half of the second floor contained a 66' by 29' assembly room with a stage; and a laboratory with a small darkroom and cubby hole used to project movies into the assembly room. The south half contained two recitation rooms and a commercial room. The drawings also show a bank of teller windows installed on the east wall of the commercial room and a typewriting room on the room's west end, neither of which is extant. The assembly room has been divided into classrooms and the stage area has been remodeled as the school library. However, the laboratory still retains its original darkroom, oak cabinets and projector cubbyhole.

United States Department of the Interior  
National Park Service

**NATIONAL REGISTER OF HISTORIC PLACES  
CONTINUATION SHEET**

Section 8 Page 3 name of property: Irwin Consolidated School  
county, state: Shelby County, Iowa

---

**SIGNIFICANCE SUMMARY**

Irwin Consolidated School is locally significant under Criterion A as it is associated with the era of consolidation of rural townships with independent schools that provided educational services to rural areas in Iowa. Evaluation of the Irwin Consolidated School for National Register eligibility is based upon criteria outlined in the Multiple Property Documentation Form *Public Schools for Iowa: Growth and Change, 1848-1966* (Beedle and Deiber 2002) under the property type "K-12 School." The Irwin school is a K-12 consolidated school that represents that era with a high degree of integrity on its interior, the gymnasium and assembly room being the only rooms to be significantly altered. The Irwin Consolidated School meets all the requirements of a K-12 type of school. It was constructed as a K-12 school and retains its integrity of location, feeling, setting, and association.

**RESOURCE HISTORY AND HISTORIC CONTEXT**

The first school built to accommodate the children of Irwin was located south of the town and was built by subscription in 1881. The building was moved into Irwin sometime later and continued as a school. A new four-room, school building was constructed in 1884 for \$3700. Initially, two teachers were employed at the school; sometime later four teachers taught at the school, each receiving a salary of \$35. With the addition of two teachers, a high school course was offered.

By 1904, the Irwin school building was deemed unsafe and was torn down. A large, two-story frame schoolhouse was built on the same site in 1904. The school now had five teachers and a twelve-year course of study. Enrollment continued to grow with rooms being partitioned to accommodate new classes and expanded coursework.

In 1914, the secretary of rural Douglas Township District #1 petitioned the Board of Education to become a part of the Irwin Independent School District. The petition was accepted and the consolidation of schools in the northeast part of Shelby County had begun. As more districts petitioned for consolidation into the Irwin Independent School District, the construction of a new school building was considered. One board member argued at a Board of Education meeting, "In other words (not used by Shakespeare) the district school is regarded by Iowans as a back number. Iowans can plainly see the advantages of consolidation. The country schoolmaster is no more, and will positively be 'no more' within the next two or three years" (Irwin Centennial 1981:151). Voters passed bond issues in 1916 and 1917 that totaled \$75,000 for the construction of a new school.

Construction of a new two-story school building started in 1917 and was open by the fall of 1918. The new school building had room for an expanded curriculum that included domestic science, manual training, and physical education/athletic activities though there was a school basketball team as early as 1910. The new gymnasium, located in the basement, gave rise to the first girl's basketball team in Irwin in 1920.

In 1955, the Irwin Community School District (formerly the Irwin Consolidated School District) was reorganized to include the Kirkman school district and was renamed the Irwin-Kirkman Community School. A new school building was built in 1957 to accommodate the new district. The new building, a two-story brick structure, was dedicated on August 28, 1958 and opened that fall with an enrollment of 545.

In February 2002, the 1918 school was vacated by the school district. Currently, there are no plans by the school district for the building.

Name of Property or District  
County, State

Irwin Consolidated School  
Shelby County, Iowa

**9. Major Bibliographical References**

(Cite the books, articles, and other sources used in preparing this form on one or more continuation sheets.)

Previous documentation on file (NPS)

- preliminary determination of individual listing (36 CFR 67) has been requested.
- previously listed in the National Register
- previously determined eligible by the National Register
- designated a National Historic Landmark
- recorded by Historic American Buildings Survey #
- recorded by Historic American Engineering Record #

Primary Location of Additional Data

- State Historic Preservation Office
- Other State agency
- Federal agency
- Local government
- University
- Other

Name of repository

**10. Geographical Data**

Acreege of Property: 1 Acre

UTM References (Place additional UTM references on a continuation sheet)

	Zone	Easting	Northing		Zone	Easting	Northing
1	<u>15</u>	<u>316715.757</u>	<u>4629122.017</u>	3	_____	_____	
2	_____	_____	_____	4	_____	_____	

See continuation sheet.

**Verbal Boundary Description** (Describe the boundaries of the property on a continuation sheet.)

**Boundary Justification** (Explain why the boundaries were selected on a continuation sheet.)

United States Department of the Interior  
National Park Service

**NATIONAL REGISTER OF HISTORIC PLACES  
CONTINUATION SHEET**

Section 9 Page 4 name of property: Irwin Consolidated School  
county, state: Shelby County, Iowa

---

MAJOR BIBLIOGRAPHICAL REFERENCES

Edwards, John M.

1917 *Proposed New Consolidated School Building*. Manuscript on file at the Irwin Junior-Senior High School, Irwin, Iowa.

Gernandt, W. F.

1916 *Specifications for General Contract, Public School Building, Irwin, Iowa*. Manuscript on file at the Irwin Junior-Senior High School, Irwin, Iowa.

Irwin Historical Committee

1981 *Irwin Centennial History Book: 1881-1981*. On file at the Irwin Historical Society Museum, Irwin, Iowa.

United States Department of the Interior  
National Park Service

**NATIONAL REGISTER OF HISTORIC PLACES  
CONTINUATION SHEET**

Section 10

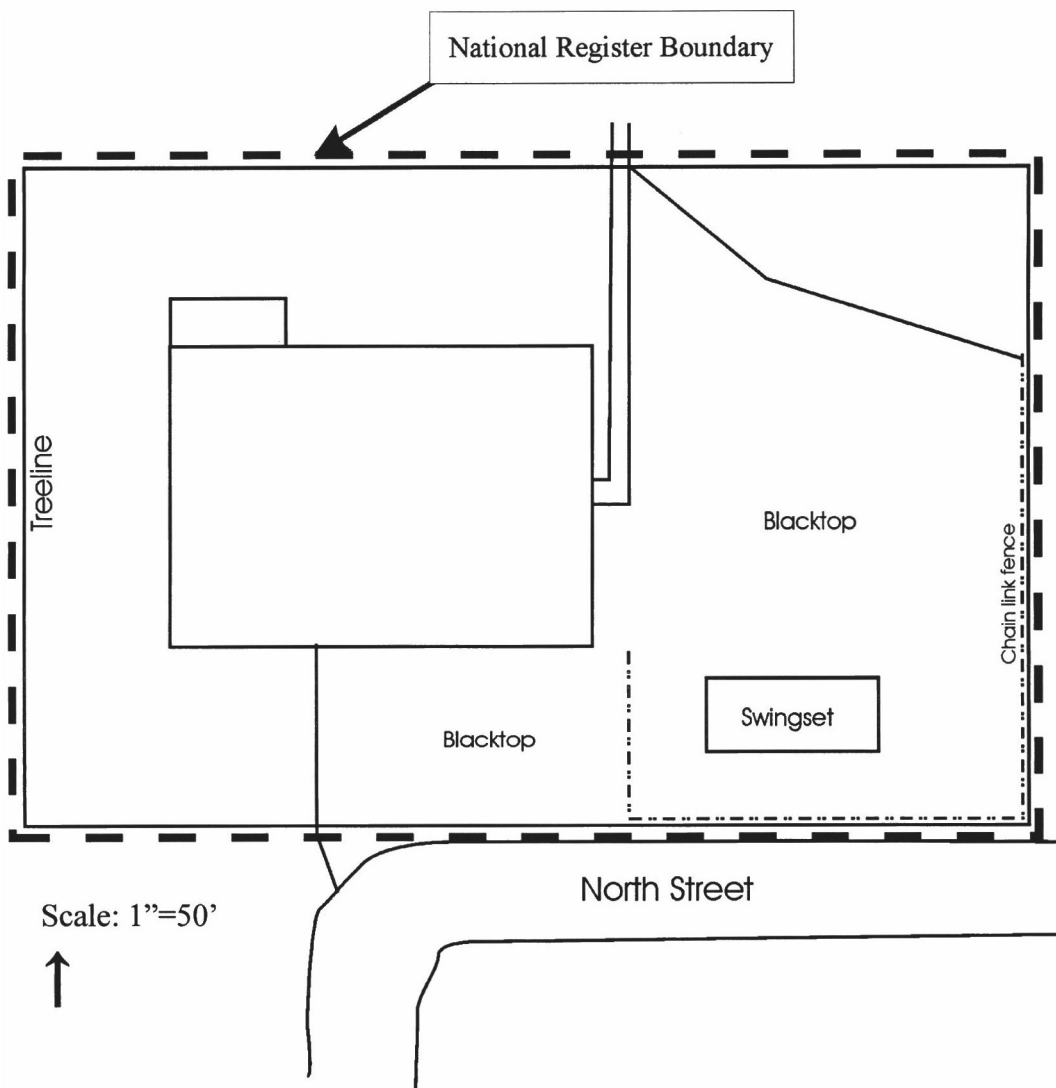
Page 5

name of property: Irwin Consolidated School  
county, state: Shelby County, Iowa

**GEOGRAPHICAL DATA**

Verbal Boundary Description

The National Register boundary for Irwin Consolidated School is depicted on the following figure.



Boundary Justification

The nominated property includes Irwin Consolidated School and a blacktop playground with a swing set that was installed within the past 20 years and is does not contribute to the significance of the property.

Name of Property or District  
County, State

Irwin Consolidated School  
Shelby County, Iowa

---

**11. Form Prepared By**

---

name/title Camilla Deiber, Architectural Historian

organization The Louis Berger Group, Inc. date 7/10/02

street & number 950 50<sup>th</sup> Street telephone 319-373-3043

city or town Marion state Iowa zip code 52302

---

**Additional Documentation**

---

(Submit the following items with the completed form.)

**Continuation Sheets**

Maps: A USGS map (7.5 or 15 minute series) indicating the property's location.

A sketch map for historic districts and properties having large acreage or numerous resources.

Photographs: Representative black and white photographs of the property.

Additional items (check with the SHPO or FPO for any additional items)

---

**Property Owner**

---

(Complete this item at the request of the SHPO or FPO.)

name IKM Community Schools, Superintendent Jeff Kruse

street & number 755 Main Street telephone 712-654-2852

city or town Manilla state IA zip code 51454

---

Paperwork Reduction Act Statement: This information is being collected for applications to the National Register of Historic Places to nominate properties for listing or determine eligibility for listing, to list properties, and to amend existing listings. Response to this request is required to obtain a benefit in accordance with the National Historic Preservation Act, as amended (16 U.S.C. 470 et seq.).

Estimated Burden Statement: Public reporting burden for this form is estimated to average 18.1 hours per response including the time for reviewing instructions, gathering and maintaining data, and completing and reviewing the form. Direct comments regarding this burden estimate or any aspect of this form to the Chief, Administrative Services Division, National Park Service, P.O. Box 37127, Washington, DC 20013-7127; and the Office of Management and Budget, Paperwork Reductions Project (1024-0018), Washington, DC 20503.

United States Department of the Interior  
National Park Service

**NATIONAL REGISTER OF HISTORIC PLACES  
CONTINUATION SHEET**

Section Photos Page 6 name of property: Irwin Consolidated School  
county, state: Shelby County, Iowa

---

The following items apply to all photographs:

Property Name: Irwin Consolidated School

Location: Irwin, Shelby County, Iowa

Photographer: Camilla R. Deiber

Date of Photographs: 2001

Location of Negatives: The State Historical Society of Iowa, Community Programs Bureau, Des Moines

Individual Photograph Identifications:

1. Overall view, looking northwest
2. Overall view, looking south by southeast
3. Main entrance, looking north
4. Base of engaged pier, looking north
5. Second floor hallway, looking southwest
6. Main floor hallway, looking west by northwest
7. Former science room, looking northwest
8. Former darkroom, looking north by northeast
9. Former kindergarten room with cloakroom, looking southeast
10. Classroom with metal lockers, looking northwest
11. Fire escape, looking northeast
12. Bathroom, looking southwest
13. Bathroom, looking west
14. Blueprint of second floor

United States Department of the Interior  
National Park Service

**NATIONAL REGISTER OF HISTORIC PLACES  
CONTINUATION SHEET**

Section Photos Page 7

name of property: Irwin Consolidated School  
county, state: Shelby County, Iowa

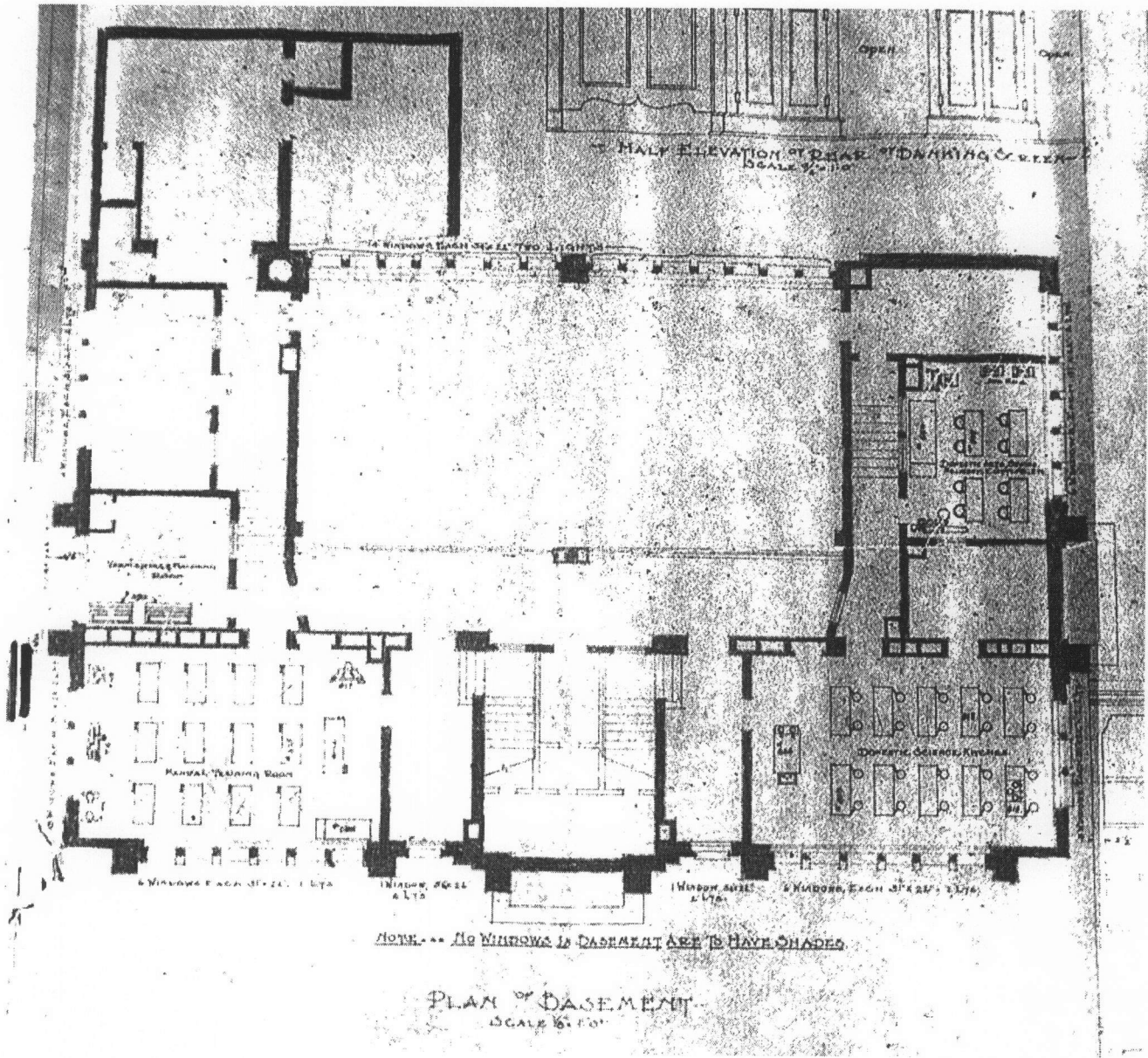
---

15. Blueprint of first floor
16. Blueprint of basement
17. Blueprint of bank of teller windows in Commercial Room
18. Historic photo of classrooms, ca 1945
19. Historic photo of cafeteria in basement, ca 1945
20. Historic photo of gymnasium, ca 1945
21. Historic exterior photo, 1939

United States Department of the Interior  
National Park Service

**NATIONAL REGISTER OF HISTORIC PLACES  
CONTINUATION SHEET**

Section Floor Plans Page 8 name of property: Irwin Consolidated School  
county, state: Shelby County, Iowa

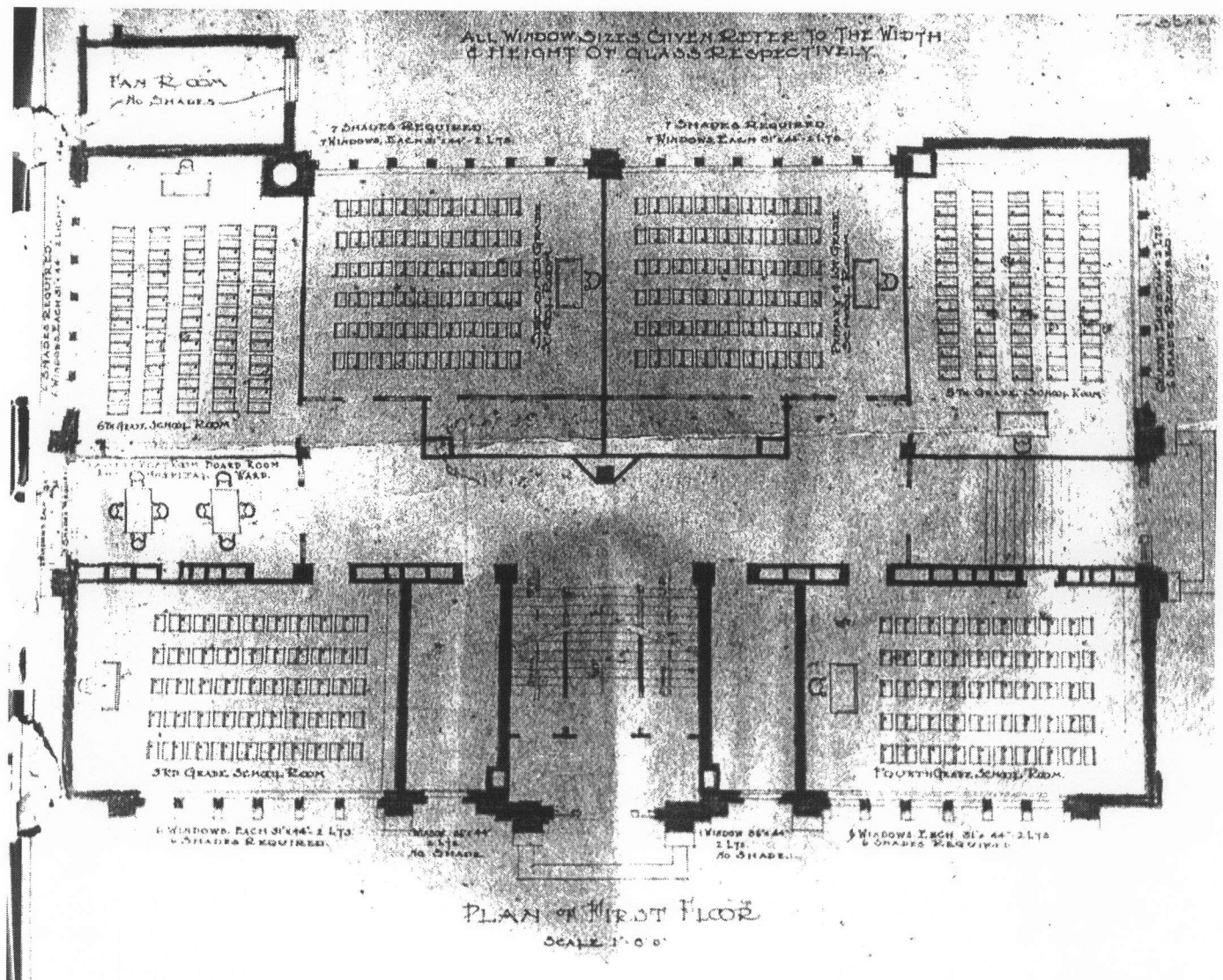


Original Blueprint. On file at the Main Office, Irwin Community Schools, Irwin, Iowa.

United States Department of the Interior  
National Park Service

### NATIONAL REGISTER OF HISTORIC PLACES CONTINUATION SHEET

Section Floor Plans Page 9 name of property: Irwin Consolidated School  
county, state: Shelby County, Iowa

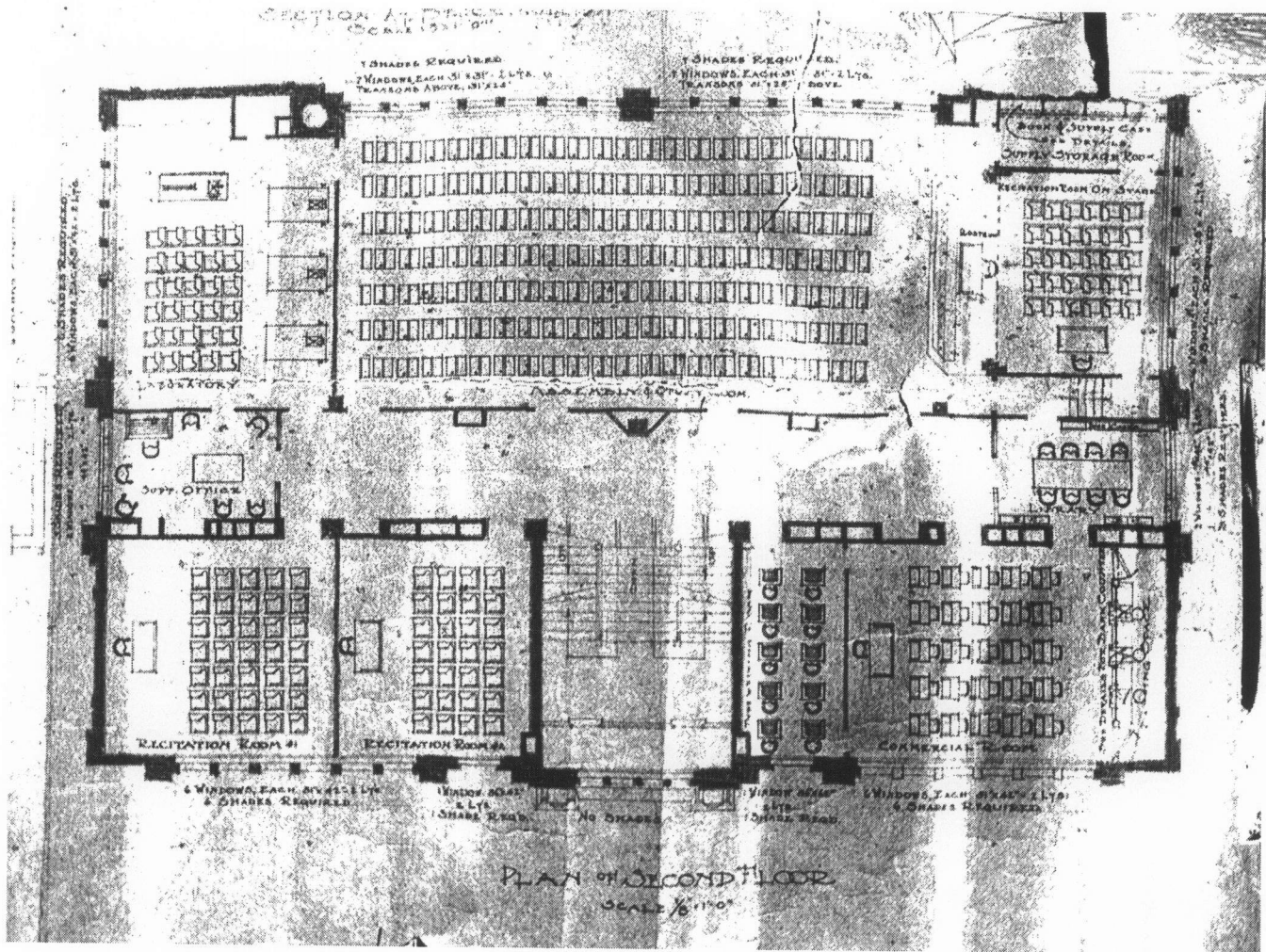


Original Blueprint. On file at the Main Office, Irwin Community Schools, Irwin, Iowa.

United States Department of the Interior  
National Park Service

**NATIONAL REGISTER OF HISTORIC PLACES  
CONTINUATION SHEET**

Section Floor Plans Page 10 name of property: Irwin Consolidated School  
county, state: Shelby County, Iowa

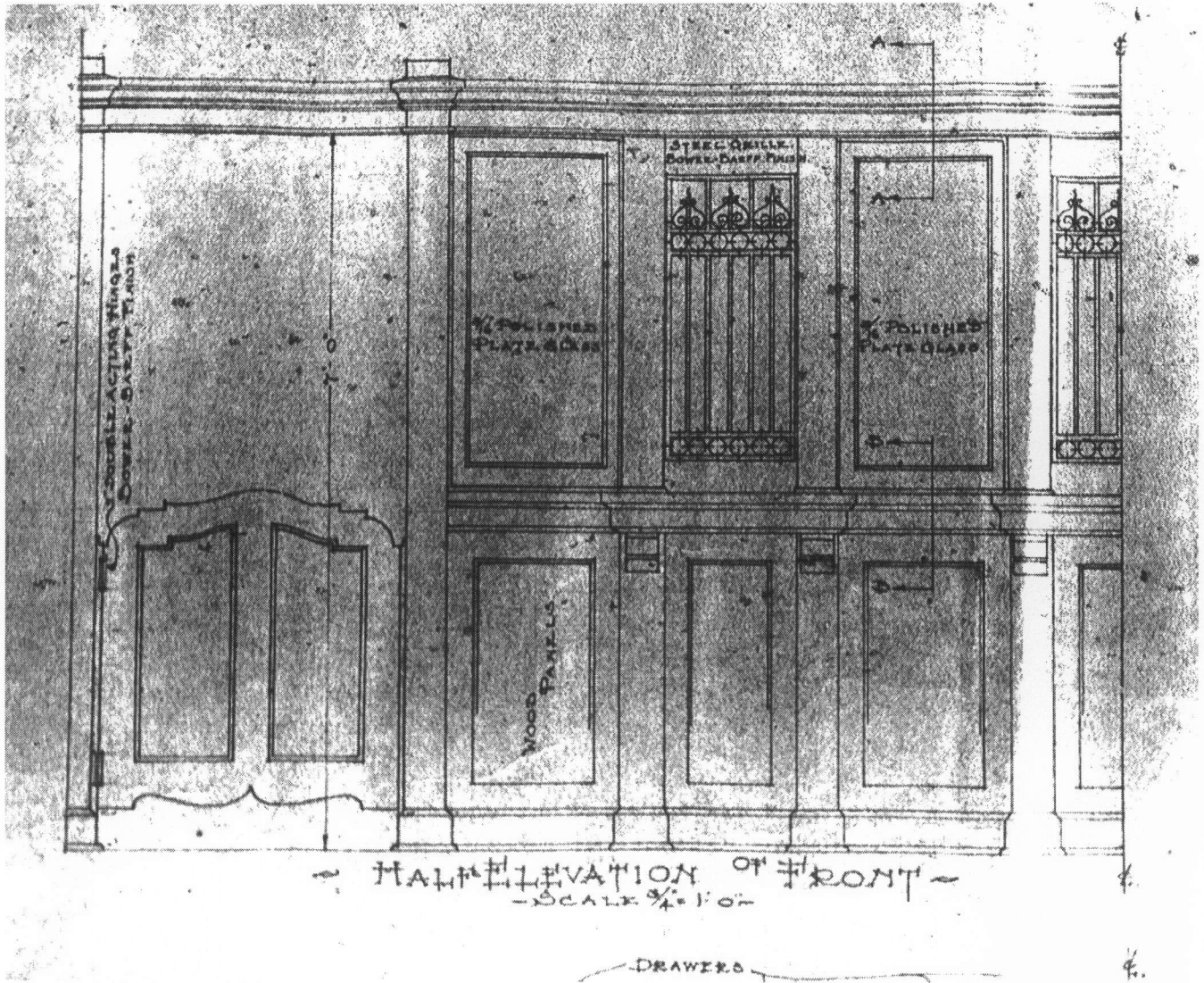


Original Blueprint. On file at the Main Office, Irwin Community Schools, Irwin, Iowa.

United States Department of the Interior  
National Park Service

**NATIONAL REGISTER OF HISTORIC PLACES  
CONTINUATION SHEET**

Section Floor Plans Page 11 name of property: Irwin Consolidated School  
county, state: Shelby County, Iowa



Original Blueprint of Bank Counter in Commercial Room.  
On file at the Main Office, Irwin Community Schools, Irwin, Iowa.

UNITED STATES DEPARTMENT OF THE INTERIOR  
NATIONAL PARK SERVICE

NATIONAL REGISTER OF HISTORIC PLACES  
EVALUATION/RETURN SHEET

REQUESTED ACTION: NOMINATION

PROPERTY Irwin Consolidated School  
NAME:

MULTIPLE Public Schools for Iowa: Growth and Change MPS  
NAME:

STATE & COUNTY: IOWA, Shelby

DATE RECEIVED: 9/09/02 DATE OF PENDING LIST: 10/04/02  
DATE OF 16TH DAY: 10/20/02 DATE OF 45TH DAY: 10/24/02  
DATE OF WEEKLY LIST:

REFERENCE NUMBER: 02001246

REASONS FOR REVIEW:

APPEAL: N DATA PROBLEM: N LANDSCAPE: N LESS THAN 50 YEARS: N  
OTHER: N PDIL: N PERIOD: N PROGRAM UNAPPROVED: N  
REQUEST: N SAMPLE: N SLR DRAFT: Y NATIONAL: N

COMMENT WAIVER: N

     ACCEPT      RETURN      REJECT                      DATE

ABSTRACT/SUMMARY COMMENTS:

RECOM./CRITERIA Accept A

REVIEWER Livian / McCulland DISCIPLINE                     

TELEPHONE                      DATE 10/24/02

DOCUMENTATION see attached comments Y/N see attached SLR Y/N

CLG NATIONAL REGISTER REVIEW

CLG Name Shelby County Date of Public Meeting \_\_\_\_\_

Property Name Irwin Consolidated School, North Street, Irwin, Shelby County

1. For Historic Preservation Commission:

- Recommendation of National Register eligibility
- Recommendation of National Register ineligibility

Signature Margaret M. Anderson Date 5-9-02

Reason(s) for recommendation:

This school building is much like schools built in the early 20th Century when there was consolidation of the rural townships. This was significant because consolidation of schools brought additional opportunities for students to participate in areas of education previously not available in the small town and rural school. There have been few changes in the exterior and interior construction of the building.

2. For Chief Elected Local Official:

- Recommendation of National Register eligibility
- Recommendation of National Register ineligibility

Signature Lavon A. Christensen Date 5-10-02

Reason(s) for recommendation:

3. Professional Evaluation Name Ralph J. Christian

- Recommendation of National Register eligibility
- Recommendation of National Register ineligibility

Signature Ralph J. Christian Date 5/3/02

Reason(s) for recommendation:

RETURN TO: State Historical Society of Iowa, ATTN: National Register Coordinator, 600 E. Locust, Des Moines, IA 50319



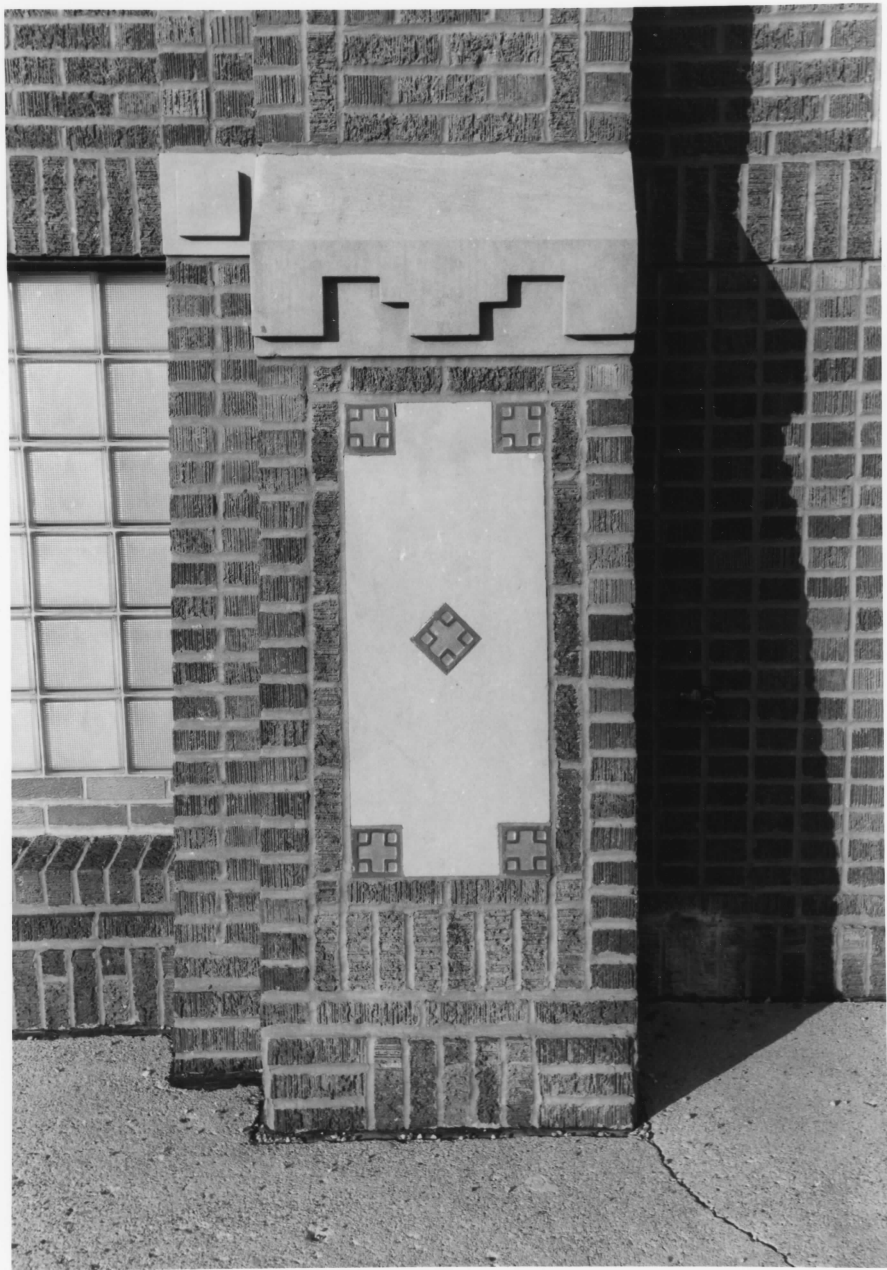
IRWIN CONSOLIDATED SCHOOL : IRWIN, IA



Z. IRWIN CONSOLIDATED SCHOOL : IRWIN, IA



3. IRWIN CONSOLIDATED SCHOOL : IRWIN, IA



4 IRWIN CONSOLIDATED SCHOOL : IRWIN, IA



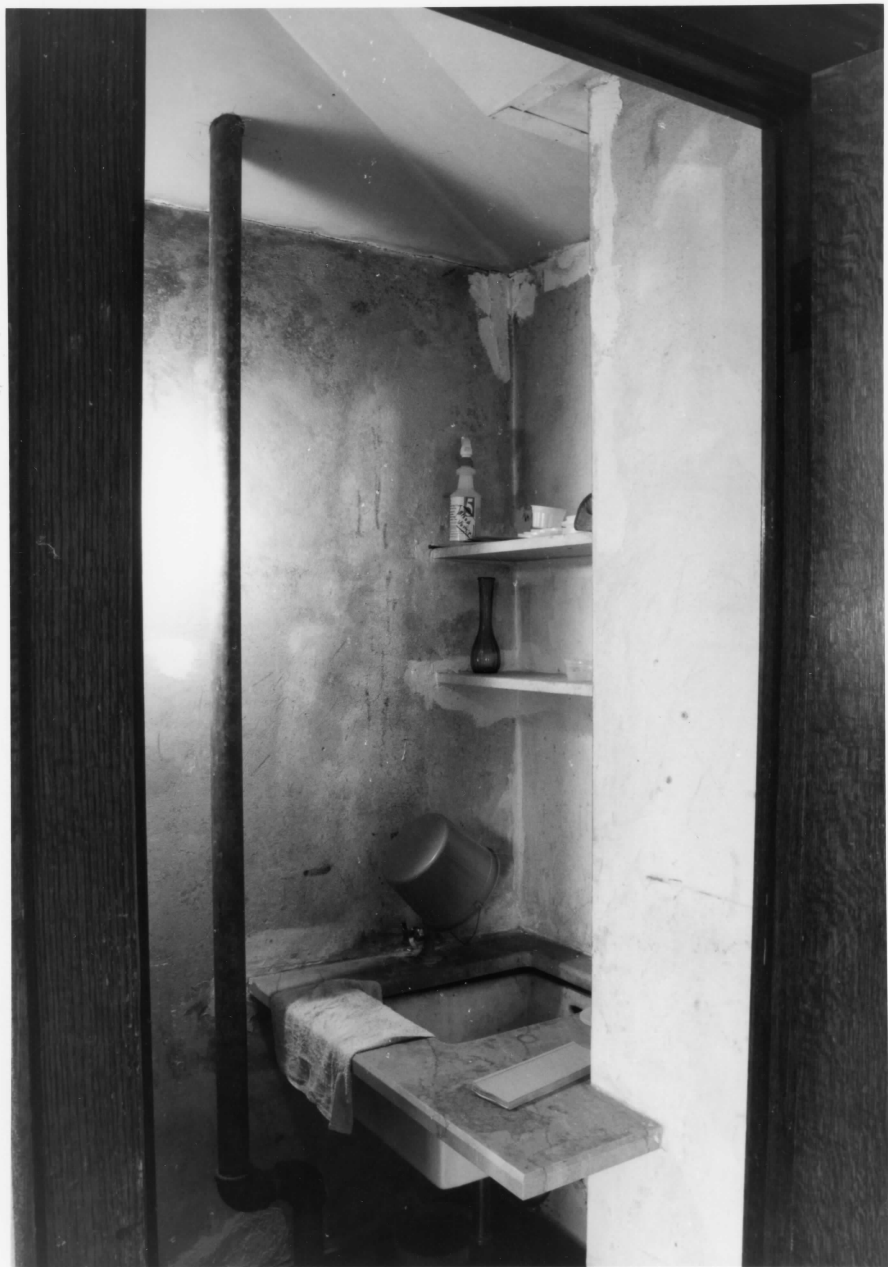
5. IRWIN CONSOLIDATED SCHOOL : IRWIN, IA



G. IRWIN CONSOLIDATED SCHOOL : IRWIN, IA



7. IRWIN CONSOLIDATED SCHOOL : IRWIN, LA



8 IRWIN CONSOLIDATED SCHOOL: IRWIN, IA



9. IRWIN CONSOLIDATED SCHOOL: IRWIN, IA



10. IRWIN CONSOLIDATED SCHOOL : IRWIN, IA



11. IRWIN CONSOLIDATED SCHOOL: IRWIN, IA



12. IRWIN CONSOLIDATED SCHOOL: IRWIN, IA



13. (RWIN CONSOLIDATED) SCHOOL: (RWIN, IA

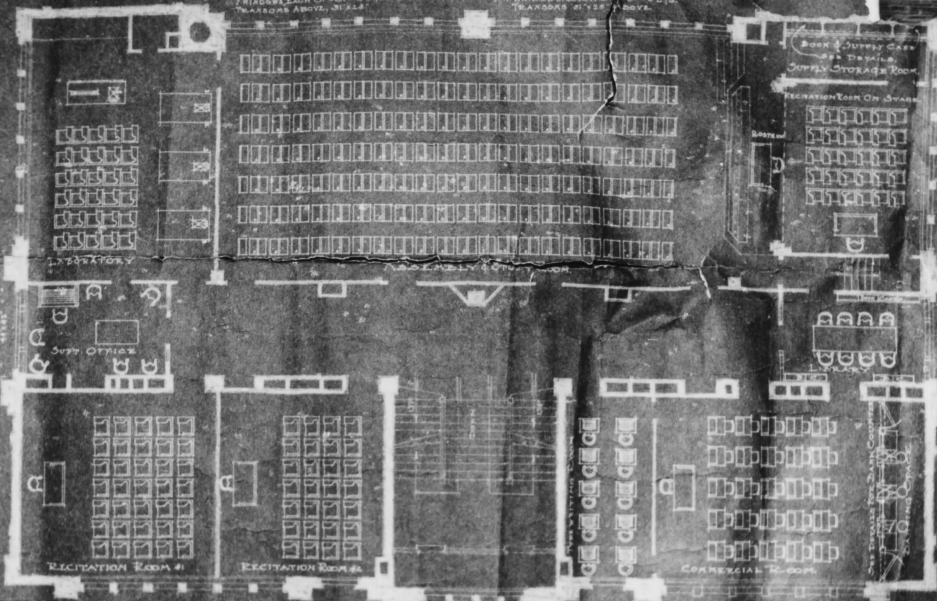
SECTION AT DE. C. MILLER ST  
SCALE 1/8" = 1'-0"

1 SHADES REQUIRED  
2 WINDOWS EACH 6' X 4 1/2" X L.T.  
TRAWNS 4' X 12" ABOVE.

1 SHADES REQUIRED  
2 WINDOWS EACH 6' X 4 1/2" X L.T.  
TRAWNS 4' X 12" ABOVE.

1 SHADES REQUIRED  
2 WINDOWS EACH 6' X 4 1/2" X L.T.  
TRAWNS 4' X 12" ABOVE.

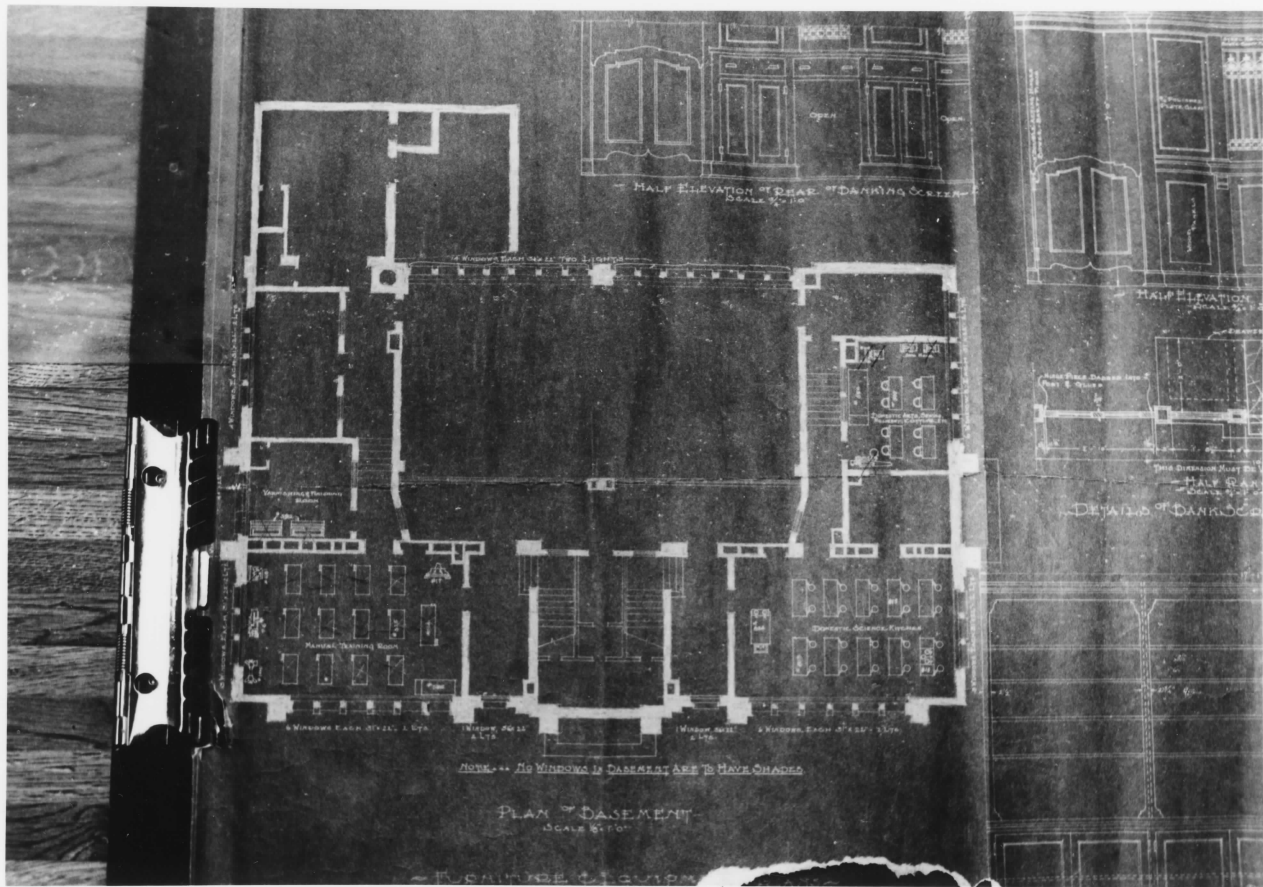
1 SHADES REQUIRED  
2 WINDOWS EACH 6' X 4 1/2" X L.T.  
TRAWNS 4' X 12" ABOVE.



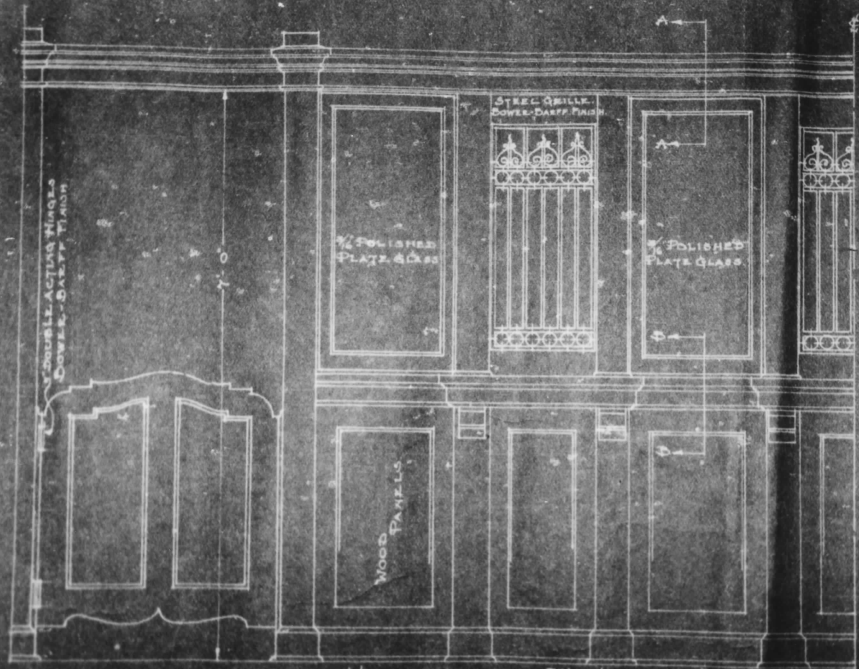
PLAN OF SECOND FLOOR  
SCALE 1/8" = 1'-0"

14. IRWIN CONSOLIDATED SCHOOL; IRWIN, IA





16. IRWIN CONSOLIDATED SCHOOL : IRWIN, IA



~ HALF ELEVATION OF FRONT ~  
 - SCALE 3/4" = 1'-0"

~ SECTION ~  
 SCALE 3/4"

DRAWN

17. IRWIN CONSOLIDATED SCHOOL: IRWIN, IA

# Homemakers Class



## SHOP



Flaherty Watch Shop--Harlan, Iowa

# CHOW



Irwin Sandwich Shop

BAND



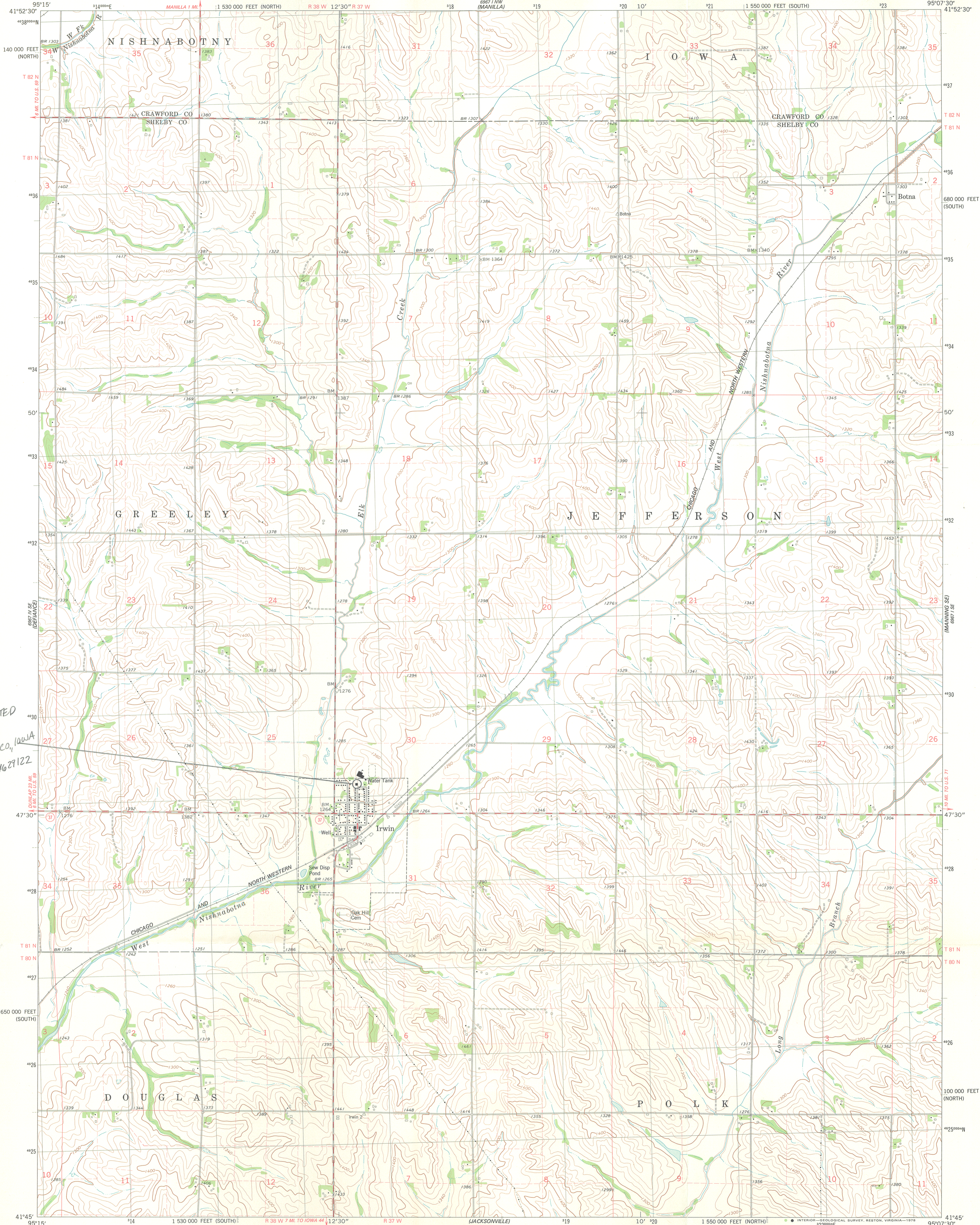
TOP ROW:

Ardith Olson, Virginia Anthony, Marilyn Simpson, Lyla Wiese,  
Eleanore Shipp, George Steenhusen, Howard Kuchel, Ladelle Wiese,  
Dinah Lamm, Mary Jean, Leona Smith

20. IRWIN CONSOLIDATED SCHOOL : IRWIN, IA



21. IRWIN CONSOLIDATED SCHOOL : IRWIN, IA



IRWIN CONSOLIDATED  
SCHOOL  
NORTH STREET  
IRWIN, SHELBY CO., IOWA  
UTM: 15/316715/4629122

Mapped, edited, and published by the Geological Survey

Control by USGS and NOS/NOAA

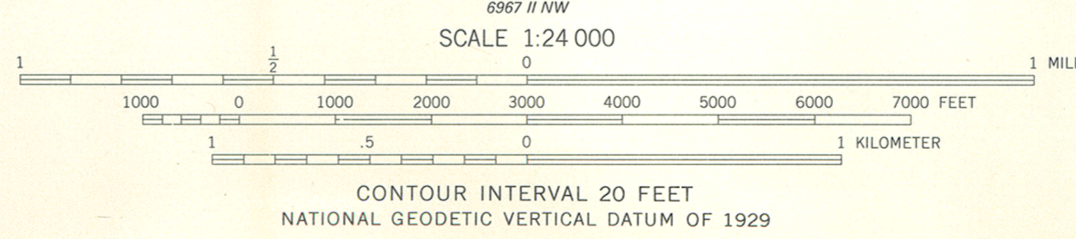
Topography by photogrammetric methods from aerial photographs taken 1973. Field checked 1975. Map edited 1978

Projection: Iowa coordinate system, south zone (Lambert conformal conic)

10,000-foot grid ticks based on Iowa coordinate system, south and north zones

1000-meter Universal Transverse Mercator grid, zone 15 1927 North American datum

Fine red dashed lines indicate selected fence and field lines where generally visible on aerial photographs. This information is unchecked



ROAD CLASSIFICATION	
Primary highway, hard surface	Light-duty road, hard or improved surface
Secondary highway, hard surface	Unimproved road
Interstate Route	U.S. Route
	State Route



THIS MAP COMPLIES WITH NATIONAL MAP ACCURACY STANDARDS FOR SALE BY U.S. GEOLOGICAL SURVEY, DENVER, COLORADO 80225, OR RESTON, VIRGINIA 22092 AND BY THE IOWA GEOLOGICAL SURVEY, IOWA CITY, IOWA 52240 A FOLDER DESCRIBING TOPOGRAPHIC MAPS AND SYMBOLS IS AVAILABLE ON REQUEST

IRWIN, IOWA  
N4145-W9507.5/7.5  
1978