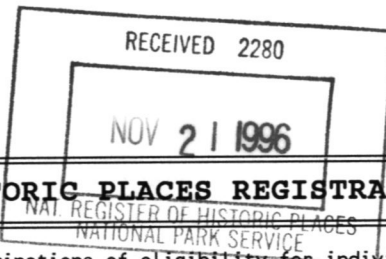


1500



NATIONAL REGISTER OF HISTORIC PLACES REGISTRATION FORM

This form is for use in nominating or requesting determinations of eligibility for individual properties or districts. See instructions in "Guidelines for Completing National Register Forms" (National Register Bulletin 16). Complete each item by marking "x" in the appropriate box or by entering the requested information. If an item does not apply to the property being documented, enter "N/A" for "not applicable." For functions, styles, materials, and areas of significance, enter only the categories and subcategories listed in the instructions. For additional space use continuation sheets (Form 10-900a). Type all entries.

1. Name of Property

historic name Shiloh Orphanage
other names/site number Shiloh Comprehensive Community Center

2. Location

street & number 1635 15th Street
city, town Augusta (N/A) vicinity of
county Richmond code GA 245
state Georgia code GA zip code 30901

(N/A) not for publication

3. Classification

Ownership of Property:

- private
- public-local
- public-state
- public-federal

Category of Property

- building(s)
- district
- site
- structure
- object

Number of Resources within Property:

	<u>Contributing</u>	<u>Noncontributing</u>
buildings	3	0
sites	0	0
structures	0	0
objects	0	0
total	3	0

Contributing resources previously listed in the National Register: 0

Name of related multiple property listing: N/A

4. State/Federal Agency Certification

As the designated authority under the National Historic Preservation Act of 1966, as amended, I hereby certify that this nomination meets the documentation standards for registering properties in the National Register of Historic Places and meets the procedural and professional requirements set forth in 36 CFR Part 60. In my opinion, the property meets the National Register criteria. () See continuation sheet.

Mark R. Edwards

Signature of certifying official

November 18 1996
Date

Mark R. Edwards
State Historic Preservation Officer,
Georgia Department of Natural Resources

In my opinion, the property () meets () does not meet the National Register criteria. () See continuation sheet.

Signature of commenting or other official

Date

State or Federal agency or bureau

5. National Park Service Certification

I, hereby, certify that this property is:

entered in the National Register

Ma J. M. Way

12/30/96

() determined eligible for the National Register

() determined not eligible for the National Register

() removed from the National Register

() other, explain:

() see continuation sheet

for

Signature, Keeper of the National Register

Date

6. Function or Use

Historic Functions:

DOMESTIC/Institutional housing/orphanage
EDUCATION/school

Current Functions:

SOCIAL/community center

7. Description

Architectural Classification:

NO STYLE/vernacular
LATE 19TH CENTURY AND 20TH CENTURY REVIVALS/Colonial Revival

Materials:

foundation	concrete block, brick
walls	wood, brick
roof	asphalt shingles
other	N/A

Description of present and historic physical appearance:

The Shiloh Orphanage is located in southwestern Augusta near the historically African-American neighborhood of Bethlehem. The orphanage consists of a complex of buildings which convey the architectural significance and development of Shiloh Orphanage.

The Shiloh Orphanage consists of three buildings: Strong Academy (1910), the Girls Dormitory (1927), and the Boys Dormitory (1936). Strong Academy is a front-gabled building with a hipped-roof front porch with rectangular columns, weatherboard siding, concrete-pier foundation, and 6/6 double-hung windows with the interior featuring wood window and door surrounds and wainscoting. The Girls Dormitory is a one-story, brick building with understated Colonial Revival detailing, side-gabled roof, shed-roof front porch with rectangular columns and balustrade, 6/6 double-hung windows, brick beltcourse, decorative brickwork and wood paneled doors with transoms. The interior features plaster walls, baseboards, wood window and door surrounds, and wood paneled doors. The Boys Dormitory (Sara Jane Harris Memorial Hall) is a brick, one-story building with Colonial Revival detailing, raised-seam metal side-gabled roof, brick chimneys, decorative brickwork, brick pilasters, brick entry pedimented portico with recessed double-door entrance, 6/6 double-hung windows, and multi-light wood paneled doors. Its interior features include plaster ceilings, wood paneled walls, baseboards, wood window and door surrounds, brick mantels, and wood paneled doors. The grounds include modernplay equipment and ball fields. The property is surrounded by a mostly residential neighborhood and light industrial complexes.

8. Statement of Significance

Certifying official has considered the significance of this property in relation to other properties:

nationally statewide locally

Applicable National Register Criteria:

A B C D

Criteria Considerations (Exceptions): N/A

A B C D E F G

Areas of Significance (enter categories from instructions):

ETHNIC HERITAGE: AFRICAN AMERICAN
SOCIAL HISTORY
ARCHITECTURE
EDUCATION

Period of Significance:

1910-1946

Significant Dates:

1910 - Construction of Strong Academy.
1927 - Construction of Girls Dormitory.
1936 - Construction of Boys Dormitory.

Significant Person(s):

N/A

Cultural Affiliation:

African American

Architect(s)/Builder(s):

Scroggs and Ewing - Girls Dormitory (1927)
Edward Lynn Drummond - Boys Dormitory (1936)

National Register of Historic Places
Continuation Sheet

Section 8

Significance of property, justification of criteria, criteria considerations, and areas and periods of significance noted above:

Narrative statement of significance (areas of significance)

The Shiloh Orphanage, a historically African-American institution, is located in southwest Augusta, a historically African-American section of the city. The complex of intact, historic buildings conveys the importance of the orphanage to the African-American community of Augusta.

The Shiloh Orphanage complex is significant in terms of Social and African-American History as representing how the Augusta community provided housing, care, and education for the African-American children without families, in a time when governmental assistance was not available. The orphanage was founded in 1902 by black leaders of the community, and supported by local businesses. After operating for over sixty years, the orphanage closed in 1970. The first minority orphanage in Augusta was established in 1896 as the Gaddis S. Johnson Orphanage, which operated until 1900 when Reverend Johnson moved to Macon. In 1902, the Shiloh Orphanage was formed by the Shiloh Baptist Association and was located at the home of Reverend Daniel McHorton. In 1904, the Orphanage moved to its present location on Fifteenth Street in the Harrisonville community. In the late 1970s, the Shiloh Comprehensive Community Center was formed and began using the buildings.

The Shiloh Orphanage is significant in architecture for its collection of buildings associated with the orphanage. The Strong Academy (1910) is a good example of a vernacular, one-story building located on the southern end of the complex. The Girls Dormitory (1927) and Boys Dormitory (1936) are good examples of brick, one-story buildings which contain some Colonial Revival stylistic elements, such as rectangular columns pilasters and dentils and modillions located in the eaves. The Girls Dormitory is located on the northern end of the complex and the Boys Dormitory is located between the other two buildings creating an U-shaped campus. The dormitories are also good examples of the type and style of community landmark buildings constructed in the 1920s and 1930s in Georgia. The orphanage is also significant in architecture because the architects of both the dormitories were locally prominent architects. The architectural firm of Scroggs and Ewing designed the girls dormitory and Edward Lynn Drummond designed the Boys Dormitory.

The Orphanage is significant in education for the presence of the Strong Academy which was a one-room school for the younger children living at Shiloh. The Strong Academy was one the first buildings constructed at the complex and named in honor of Mrs. Alvah Hattie

National Register of Historic Places
Continuation Sheet

Section 8

Strong's husband. Mrs. Strong donated \$750.00 towards the purchase of the land to build the academy.

National Register Criteria

The Shiloh Orphanage is determined eligible under Criterion A for its association to the Strong Academy and development as an African-American orphanage. The orphanage is also determined eligible under Criterion C for its collection of intact, historic buildings that strongly reflect the vernacular building tradition and Colonial Revival stylistic elements.

Criteria Considerations (if applicable)

N/A

Period of significance (justification)

The period of significance for the Shiloh Orphanage begins with the construction of Strong Academy in 1910 and ends in 1946, the end of the historic period during which the historic buildings were in continuous use as an orphanage.

Contributing/Noncontributing Resources (explanation, if necessary)

The Shiloh Orphanage consists of three contributing buildings; there are no noncontributing resources located within the Shiloh Orphanage boundary.

Developmental history/historic context (if applicable)

The Shiloh Orphanage was founded in 1902 by Rev. Daniel McHorton and the Shiloh Baptist Association. The orphanage was located in Rev. McHorton's home on the corner of Railroad Street @ Sherman Street. Rev. McHorton, who served on an earlier African-American orphanage supervising board in Augusta, served as the Shiloh Orphanage's first superintendent.

In 1904, the orphanage purchased land on Fifteenth Street from Mrs. Hattie Strong. Mrs. Strong had purchased the land from the Sisters of the Third Order Regular of St. Francis, who had tried to start an orphanage on the property but abandoned the attempt in 1890. The Sister relocated to 12th Street and established the St. Benedict

National Register of Historic Places
Continuation Sheet

Section 8

Convent and Boarding School. A school, the Strong Academy, was constructed in 1910 and named in honor of Mrs. Strong's husband. The Girls Dormitory was constructed in 1927 by the architectural firm of Scroggs and Ewing and the Boys Dormitory was constructed in 1936 by the architect Edward Lynn Drummond. A vegetable garden was located to the east of the complex of buildings, and some of the acreage was used to graze livestock.

The younger children at Shiloh Orphanage attended a day school which was held in Strong Academy and the older children attended nearby public schools, Mauge Street School and Nellieville School. Some students had the opportunity to attend Haines Normal and Industrial Institute, a private school operated for African-American children.

The younger children housed at the orphanage were taken care of by the older children. Some older residents also worked as domestics in homes of white citizens and members of the Shiloh Board of Directors. Those working at the orphanage were closely involved with the residents, instructing them in life skills. The children's chores included washing, ironing, cleaning living and eating areas, and working in the garden. For entertainment, the children played games in the yard and read donated books. They also were allowed to take walks in the immediate neighborhood during the afternoons. Some of the permanent residents were eventually made wards of various matrons. Some wards adopted the matron's surname.

The Shiloh Orphanage was closed in 1970 after operating for more than 60 years. In 1977, a group interested in the orphanage organized and formed the Shiloh Comprehensive Community Center. Today, the center serves those living within the nearby communities.

9. Major Bibliographic References

Polatty, Griffith L. "Shiloh Orphanage," Historic Property Information Form, January 1, 1994. On file at the Historic Preservation Division of the Georgia Department of Natural Resources, Atlanta, Georgia, with supplemental information.

Previous documentation on file (NPS): (x) N/A

- () preliminary determination of individual listing (36 CFR 67) has been requested
- () previously listed in the National Register
- () previously determined eligible by the National Register
- () designated a National Historic Landmark
- () recorded by Historic American Buildings Survey #
- () recorded by Historic American Engineering Record #

Primary location of additional data:

- (x) State historic preservation office
- () Other State Agency
- () Federal agency
- () Local government
- () University
- () Other, Specify Repository:

Georgia Historic Resources Survey Number (if assigned):

N/A

10. Geographical Data

Acreeage of Property 6.06 acres.

UTM References

A) Zone 17 Easting 407200 Northing 3702400

Verbal Boundary Description

The Shiloh Orphanage boundary is drawn to scale on the attached plat map with a heavy black line. The boundary also is indicated on the attached USGS map with a heavy black line.

Boundary Justification

The National Register boundary encompasses the complex of three buildings and 6.06 acres historically associated with the Shiloh Orphanage.

11. Form Prepared By

name/title Griffith L. Polatty/Preservation Services Manager
organization Historic Augusta, Inc.
street & number 111 Tenth Street, P.O. Box 37
city or town Augusta **state** Georgia **zip code** 30903-0037
telephone (706) 724-0436 **date** January, 1994

name/title Amy Pallante/National Register Specialist
organization Historic Preservation Division, Georgia Department of Natural Resources
street & number 500 The Healey Building, 57 Forysth Street
city or town Atlanta **state** Georgia **zip code** 30303
telephone (404) 651-6033 **date** November, 1996

(HPS form version 10-29-91)

United States Department of the Interior
National Park Service

National Register of Historic Places
Continuation Sheet

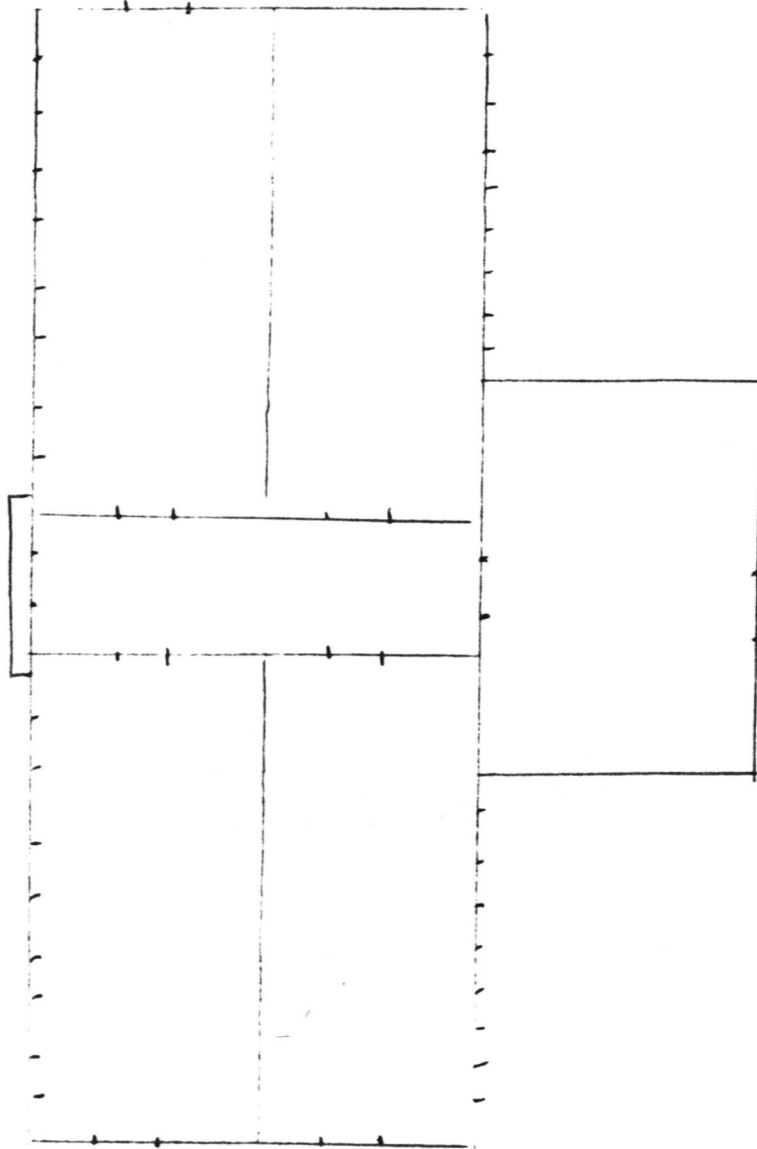
Photographs

Name of Property: Shiloh Orphanage
City or Vicinity: Augusta
County: Richmond
State: Georgia
Photographer: James R. Lockhart
Negative Filed: Georgia Department of Natural Resources
Date Photographed: April, 1996

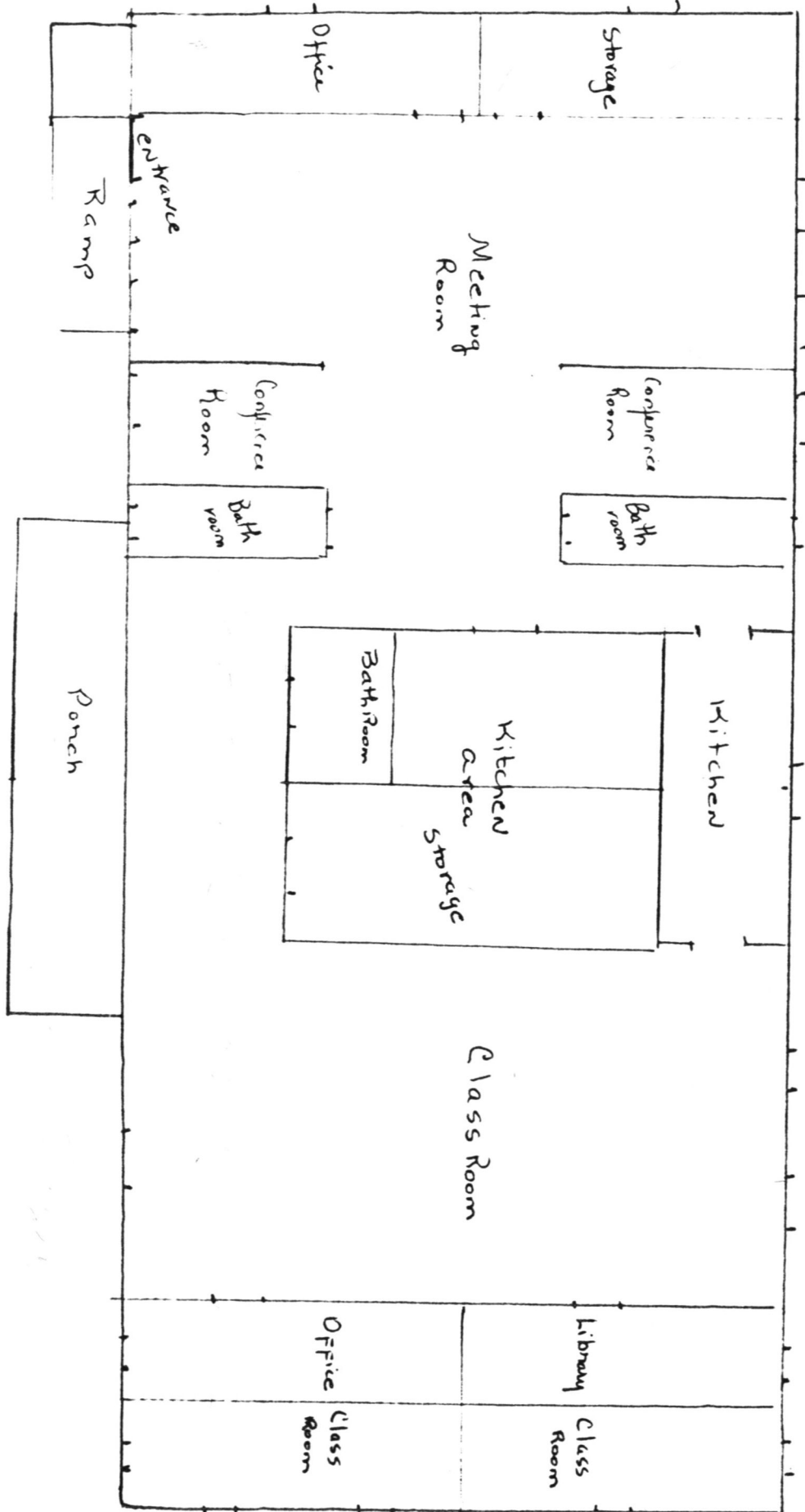
Description of Photograph(s):

- 1 of 13 Shiloh Orphanage complex; photographer facing north.
- 2 of 13 View of Boys Dormitory; photographer facing northwest.
- 3 of 13 View of Girls Dormitory; photographer facing west.
- 4 of 13 View of window detailing and front porch of Girls Dormitory; photographer facing west.
- 5 of 13 Rear view of Boys Dormitory; photographer facing east.
- 6 of 13 Side elevation of Girls Dormitory; photographer facing east.
- 7 of 13 Rear view of Shiloh Orphanage complex; photographer facing northeast.
- 8 of 13 Interior view of Strong Academy.
- 9 of 13 Interior view of front room in Boys Dormitory.
- 10 of 13 Interior view side room (north end) in Boys Dormitory.
- 11 of 13 Interior view of front room in Girls Dormitory.
- 12 of 13 Interior view of Girls Dormitory.
- 13 of 13 Interior view of kitchen in Girls Dormitory.

Floor Plan
Shiloh Orphanage
Augusta, Richmond County, GA.
Boys Dormitory
Not to scale



Floor Plan
Shiloh Orphanage
Augusta, Richmond County, GA.
Strong Academy
Not to scale



United States Department of the Interior
National Park Service

National Register of Historic Places
Continuation Sheet

Section number _____ Page _____

SUPPLEMENTARY LISTING RECORD

NRIS Reference Number: 96001500

Date Listed: 12/30/96

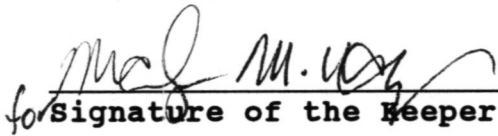
Shiloh Orphanage
Property Name

Richmond
County

GEORGIA
State

N/A
Multiple Name

This property is listed in the National Register of Historic Places in accordance with the attached nomination documentation subject to the following exceptions, exclusions, or amendments, notwithstanding the National Park Service certification included in the nomination documentation.


for Signature of the Keeper

12/30/96
Date of Action

=====
Amended Items in Nomination:

Section No. 8

This nomination is amended to add Criteria Consideration A, because the orphanage was established by a religious institution, and to delete African American as a cultural affiliation, because a cultural affiliation only needs to be identified for properties claiming significance under Criterion D.

These changes have been discussed with the Georgia SHPO.

DISTRIBUTION:
National Register property file
Nominating Authority (without nomination attachment)

UNITED STATES DEPARTMENT OF THE INTERIOR
NATIONAL PARK SERVICE

NATIONAL REGISTER OF HISTORIC PLACES
EVALUATION/RETURN SHEET

REQUESTED ACTION: NOMINATION

PROPERTY NAME: Shiloh Orphanage

MULTIPLE NAME:

STATE & COUNTY: GEORGIA, Richmond

DATE RECEIVED: 11/21/96 DATE OF PENDING LIST: 12/03/96
DATE OF 16TH DAY: 12/19/96 DATE OF 45TH DAY: 1/05/97
DATE OF WEEKLY LIST:

REFERENCE NUMBER: 96001500

NOMINATOR: STATE

REASONS FOR REVIEW:

APPEAL: N DATA PROBLEM: N LANDSCAPE: N LESS THAN 50 YEARS: N
OTHER: N PDIL: N PERIOD: N PROGRAM UNAPPROVED: N
REQUEST: N SAMPLE: N SLR DRAFT: NATIONAL: N

COMMENT WAIVER: N

ACCEPT RETURN REJECT _____ DATE

ABSTRACT/SUMMARY COMMENTS:

This complex is significant as ~~the~~ one of the only orphanages created to serve the needs of African-American residents in Augusta. The buildings are good examples of vernacular + Colonial Revival public architecture.

RECOM./CRITERIA Accept/A+C

REVIEWER Harper DISCIPLINE Historian

TELEPHONE (202)343-9546 DATE 12/30/96

DOCUMENTATION see attached comments Y/N see attached SLR N



SHILOH ORPHANAGE
AUGUSTA, RICHMOND COUNTY, GA.

PHOTO 1 of 13

THIS PAPER
MANUFACTURED
BY KODAK

THIS PAPER
MANUFACTURED
BY KODAK

THIS PAPER
MANUFACTURED
BY KODAK

THIS PAPER
MANUFACTURED
BY KODAK

THIS
MANUF
BY

S PAPER
UFACTURED
BY KODAK

THIS PAPER
MANUFACTURED
BY KODAK

THIS PAPER
MANUFACTURED
BY KODAK

THIS PAPER
MANUFACTURED
BY KODAK

THIS PAPER
MANUFACTURED
BY KODAK

THIS PAPER
MANUFACTURED
BY KODAK

THIS PAPER
MANUFACTURED
BY KODAK

THIS PAPER
MANUFACTURED
BY KODAK

THIS PAPER
MANUFACTURED
BY KODAK

THIS
MANUF
BY

S PAPER
UFACTURED
BY KODAK

THIS PAPER
MANUFACTURED
BY KODAK

THIS PAPER
MANUFACTURED
BY KODAK

THIS PAPER
MANUFACTURED
BY KODAK

THIS PAPER
MANUFACTURED
BY KODAK

looking N.

THIS PAPER
MANUFACTURED
BY KODAK

THIS PAPER
MANUFACTURED
BY KODAK

THIS PAPER
MANUFACTURED
BY KODAK

THIS PAPER
MANUFACTURED
BY KODAK

THIS
MANUF
BY

S PAPER
UFACTURED
BY KODAK

THIS PAPER
MANUFACTURED
BY KODAK

THIS PAPER
MANUFACTURED
BY KODAK

THIS PAPER
MANUFACTURED
BY KODAK

THIS PAPER
MANUFACTURED
BY KODAK



SHILOH ORPHANAGE
AUGUSTA, RICHMOND COUNTY, GA.

PHOTO 2 OF 13

Boys
looking NW



SHILOH ORPHANAGE
AUGUSTA, RICHMOND COUNTY, GA.

PHOTO 3 of 13

THIS PAPER MANUFACTURED BY KODAK

Coils
looking w



SHILOH ORPHANAGE
AUGUSTA, RICHMOND COUNTY, GA.
PHOTO 4 of 13

PAPER
MANUFACTURED
BY KODAK

THIS PAPER
MANUFACTURED
BY KODAK

THIS PAPER
MANUFACTURED
BY KODAK

THIS PAPER
MANUFACTURED
BY KODAK

THIS PAPER
MANUFACTURED
BY KODAK

THIS PAPER
MANUFACTURED
BY KODAK

THIS PAPER
MANUFACTURED
BY KODAK

THIS PAPER
MANUFACTURED
BY KODAK

THIS PAPER
MANUFACTURED
BY KODAK

THIS
MANUF
BY

PAPER
MANUFACTURED
BY KODAK

THIS PAPER
MANUFACTURED
BY KODAK

THIS PAPER
MANUFACTURED
BY KODAK

THIS PAPER
MANUFACTURED
BY KODAK

THIS PAPER
MANUFACTURED
BY KODAK

THIS PAPER
MANUFACTURED
BY KODAK

THIS PAPER
MANUFACTURED
BY KODAK

THIS PAPER
MANUFACTURED
BY KODAK

THIS PAPER
MANUFACTURED
BY KODAK

THIS
MANUF
BY

PAPER
MANUFACTURED
BY KODAK

THIS PAPER
MANUFACTURED
BY KODAK

Girls

Looking W

THIS PAPER
MANUFACTURED
BY KODAK

THIS PAPER
MANUFACTURED
BY KODAK

THIS PAPER
MANUFACTURED
BY KODAK

THIS PAPER
MANUFACTURED
BY KODAK

THIS PAPER
MANUFACTURED
BY KODAK

THIS PAPER
MANUFACTURED
BY KODAK

THIS PAPER
MANUFACTURED
BY KODAK

THIS
MANUF
BY



SHILOH ORPHANAGE
AUGUSTA, RICHMOND COUNTY, GA.

PHOTO 5 of 13

PAPER
MANUFACTURED
BY KODAK

THIS PAPER
MANUFACTURED
BY KODAK

THIS PAPER
MANUFACTURED
BY KODAK

THIS PAPER
MANUFACTURED
BY KODAK

THIS PAPER
MANUFACTURED
BY KODAK

THIS PAPER
MANUFACTURED
BY KODAK

THIS PAPER
MANUFACTURED
BY KODAK

THIS PAPER
MANUFACTURED
BY KODAK

THIS PAPER
MANUFACTURED
BY KODAK

THIS
MANU
BY

PAPER
MANUFACTURED
BY KODAK

THIS PAPER
MANUFACTURED
BY KODAK

THIS PAPER
MANUFACTURED
BY KODAK

THIS PAPER
MANUFACTURED
BY KODAK

THIS PAPER
MANUFACTURED
BY KODAK

THIS PAPER
MANUFACTURED
BY KODAK

THIS PAPER
MANUFACTURED
BY KODAK

THIS PAPER
MANUFACTURED
BY KODAK

THIS PAPER
MANUFACTURED
BY KODAK

THIS
MANU
BY

PAPER
MANUFACTURED
BY KODAK

THIS PAPER
MANUFACTURED
BY KODAK

THIS PAPER
MANUFACTURED
BY KODAK

THIS PAPER
MANUFACTURED
BY KODAK

THIS PAPER
MANUFACTURED
BY KODAK

Boys

E

THIS PAPER
MANUFACTURED
BY KODAK

THIS PAPER
MANUFACTURED
BY KODAK

THIS PAPER
MANUFACTURED
BY KODAK

THIS PAPER
MANUFACTURED
BY KODAK

THIS
MANU
BY



SHILOH ORPHANAGE
AUGUSTA, RICHMOND COUNTY, GA.

PHOTO 6 of 13

THIS PAPER
MANUFACTURED
BY KODAK

THIS PAPER
MANUFACTURED
BY KODAK

THIS PAPER
MANUFACTURED
BY KODAK

THIS PAPER
MANUFACTURED
BY KODAK

THIS PAPER
MANUFACTURED
BY KODAK

THIS PAPER
MANUFACTURED
BY KODAK

THIS PAPER
MANUFACTURED
BY KODAK

THIS PAPER
MANUFACTURED
BY KODAK

THIS PAPER
MANUFACTURED
BY KODAK

THIS PAPER
MANUFACTURED
BY KODAK

THIS PAPER
MANUFACTURED
BY KODAK

THIS PAPER
MANUFACTURED
BY KODAK

THIS PAPER
MANUFACTURED
BY KODAK

THIS PAPER
MANUFACTURED
BY KODAK

THIS PAPER
MANUFACTURED
BY KODAK

THIS PAPER
MANUFACTURED
BY KODAK

THIS PAPER
MANUFACTURED
BY KODAK

THIS PAPER
MANUFACTURED
BY KODAK

THIS PAPER
MANUFACTURED
BY KODAK

THIS PAPER
MANUFACTURED
BY KODAK

THIS PAPER
MANUFACTURED
BY KODAK

THIS PAPER
MANUFACTURED
BY KODAK

THIS PAPER
MANUFACTURED
BY KODAK

THIS PAPER
MANUFACTURED
BY KODAK

THIS PAPER
MANUFACTURED
BY KODAK

Girls

E

THIS PAPER
MANUFACTURED
BY KODAK

THIS PAPER
MANUFACTURED
BY KODAK

THIS PAPER
MANUFACTURED
BY KODAK

THIS PAPER
MANUFACTURED
BY KODAK

THIS PAPER
MANUFACTURED
BY KODAK

THIS PAPER
MANUFACTURED
BY KODAK

THIS PAPER
MANUFACTURED
BY KODAK

THIS PAPER
MANUFACTURED
BY KODAK

THIS PAPER
MANUFACTURED
BY KODAK

THIS PAPER
MANUFACTURED
BY KODAK



SHILOH ORPHANAGE
AUGUSTA, RICHMOND COUNTY, GA.

PHOTO 7 of 13

THIS PAPER MANUFACTURED BY KODAK

7

looking ME



SHILOH ORPHANAGE
AUGUSTA, RICHMOND COUNTY, GA.

PHOTO 8 of 13

THIS PAPER
MANUFACTURED
BY KODAK

THIS PAPER
MANUFACTURED
BY KODAK

THIS PAPER
MANUFACTURED
BY KODAK

THIS PAPER
MANUFACTURED
BY KODAK

THIS PAPER
MANUFACTURED
BY KODAK

THIS PAPER
MANUFACTURED
BY KODAK

THIS PAPER
MANUFACTURED
BY KODAK

THIS PAPER
MANUFACTURED
BY KODAK

THIS PAPER
MANUFACTURED
BY KODAK

THIS PAPER
MANUFACTURED
BY KODAK

THIS PAPER
MANUFACTURED
BY KODAK

THIS PAPER
MANUFACTURED
BY KODAK

THIS PAPER
MANUFACTURED
BY KODAK

THIS PAPER
MANUFACTURED
BY KODAK

THIS PAPER
MANUFACTURED
BY KODAK

THIS PAPER
MANUFACTURED
BY KODAK

Strong

THIS PAPER
MANUFACTURED
BY KODAK

THIS PAPER
MANUFACTURED
BY KODAK

THIS PAPER
MANUFACTURED
BY KODAK

THIS PAPER
MANUFACTURED
BY KODAK

THIS PAPER
MANUFACTURED
BY KODAK

THIS PAPER
MANUFACTURED
BY KODAK

THIS PAPER
MANUFACTURED
BY KODAK

THIS PAPER
MANUFACTURED
BY KODAK



SHILOH ORPHANAGE
AUGUSTA, RICHMOND COUNTY, GA.

PHOTO 9 of 13

THIS PAPER
MANUFACTURED
BY KODAK

THIS PAPER
MANUFACTURED
BY KODAK

THIS PAPER
MANUFACTURED
BY KODAK

THIS PAPER
MANUFACTURED
BY KODAK

THIS
MANUF

S PAPER
UFACTURED
BY KODAK

THIS PAPER
MANUFACTURED
BY KODAK

THIS PAPER
MANUFACTURED
BY KODAK

THIS PAPER
MANUFACTURED
BY KODAK

THIS PAPER
MANUFACTURED
BY KODAK

THIS PAPER
MANUFACTURED
BY KODAK

THIS PAPER
MANUFACTURED
BY KODAK

Boys
Front Right

THIS PAPER
MANUFACTURED
BY KODAK

THIS PAPER
MANUFACTURED
BY KODAK

THIS
MANUF

S PAPER
UFACTURED
BY KODAK

THIS PAPER
MANUFACTURED
BY KODAK

THIS PAPER
MANUFACTURED
BY KODAK

THIS PAPER
MANUFACTURED
BY KODAK

THIS PAPER
MANUFACTURED
BY KODAK

THIS PAPER
MANUFACTURED
BY KODAK

THIS PAPER
MANUFACTURED
BY KODAK

THIS PAPER
MANUFACTURED
BY KODAK

THIS PAPER
MANUFACTURED
BY KODAK

THIS
MANUF

S PAPER
UFACTURED
BY KODAK

THIS PAPER
MANUFACTURED
BY KODAK

THIS PAPER
MANUFACTURED
BY KODAK

THIS PAPER
MANUFACTURED
BY KODAK

THIS PAPER
MANUFACTURED
BY KODAK



SHILOH ORPHANAGE
AUGUSTA, RICHMOND COUNTY, GA.

PHOTO 10 of 13

THIS PAPER
MANUFACTURED
BY KODAK

THIS PAPER
MANUFACTURED
BY KODAK

THIS PAPER
MANUFACTURED
BY KODAK

THIS PAPER
MANUFACTURED
BY KODAK

THIS PAPER
MANUFACTURED
BY KODAK

THIS PAPER
MANUFACTURED
BY KODAK

THIS PAPER
MANUFACTURED
BY KODAK

THIS PAPER
MANUFACTURED
BY KODAK

THIS PAPER
MANUFACTURED
BY KODAK

THIS PAPER
MANUFACTURED
BY KODAK

THIS PAPER
MANUFACTURED
BY KODAK

THIS PAPER
MANUFACTURED
BY KODAK

THIS PAPER
MANUFACTURED
BY KODAK

THIS PAPER
MANUFACTURED
BY KODAK

THIS PAPER
MANUFACTURED
BY KODAK

THIS PAPER
MANUFACTURED
BY KODAK

THIS PAPER
MANUFACTURED
BY KODAK

THIS PAPER
MANUFACTURED
BY KODAK

THIS PAPER
MANUFACTURED
BY KODAK

THIS PAPER
MANUFACTURED
BY KODAK

THIS PAPER
MANUFACTURED
BY KODAK

THIS PAPER
MANUFACTURED
BY KODAK

THIS PAPER
MANUFACTURED
BY KODAK

THIS PAPER
MANUFACTURED
BY KODAK

THIS PAPER
MANUFACTURED
BY KODAK

THIS PAPER
MANUFACTURED
BY KODAK

THIS PAPER
MANUFACTURED
BY KODAK

THIS PAPER
MANUFACTURED
BY KODAK

THIS PAPER
MANUFACTURED
BY KODAK

THIS PAPER
MANUFACTURED
BY KODAK

THIS PAPER
MANUFACTURED
BY KODAK

THIS PAPER
MANUFACTURED
BY KODAK

THIS PAPER
MANUFACTURED
BY KODAK

THIS PAPER
MANUFACTURED
BY KODAK

THIS PAPER
MANUFACTURED
BY KODAK

Boys



SHILOH ORPHANAGE
AUGUSTA, RICHMOND COUNTY, GA.

PHOTO 11 of 13

THIS PAPER MANUFACTURED BY KODAK

11

Girls



SHILOH ORPHANAGE
AUGUSTA, RICHMOND COUNTY, GA.
PHOTO 12 OF 13

PAPER
MANUFACTURED
BY KODAK

THIS PAPER
MANUFACTURED
BY KODAK

THIS PAPER
MANUFACTURED
BY KODAK

THIS PAPER
MANUFACTURED
BY KODAK

THIS PAPER
MANUFACTURED
BY KODAK

THIS PAPER
MANUFACTURED
BY KODAK

THIS PAPER
MANUFACTURED
BY KODAK

THIS PAPER
MANUFACTURED
BY KODAK

THIS PAPER
MANUFACTURED
BY KODAK

THIS
MANUF
BY

PAPER
MANUFACTURED
BY KODAK

THIS PAPER
MANUFACTURED
BY KODAK

THIS PAPER
MANUFACTURED
BY KODAK

THIS PAPER
MANUFACTURED
BY KODAK

THIS PAPER
MANUFACTURED
BY KODAK

THIS PAPER
MANUFACTURED
BY KODAK

THIS PAPER
MANUFACTURED
BY KODAK

Cards

THIS PAPER
MANUFACTURED
BY KODAK

THIS PAPER
MANUFACTURED
BY KODAK

THIS
MANUF
BY

PAPER
MANUFACTURED
BY KODAK

THIS PAPER
MANUFACTURED
BY KODAK

THIS PAPER
MANUFACTURED
BY KODAK

THIS PAPER
MANUFACTURED
BY KODAK

THIS PAPER
MANUFACTURED
BY KODAK

THIS PAPER
MANUFACTURED
BY KODAK

THIS PAPER
MANUFACTURED
BY KODAK

THIS PAPER
MANUFACTURED
BY KODAK

THIS PAPER
MANUFACTURED
BY KODAK

THIS
MANUF
BY



SHILOH ORPHANAGE
AUGUSTA, RICHMOND COUNTY, GA.

PHOTO 13 OF 13

S PAPER
UFACTURED
BY KODAK

THIS PAPER
MANUFACTURED
BY KODAK

THIS PAPER
MANUFACTURED
BY KODAK

THIS PAPER
MANUFACTURED
BY KODAK

THIS PAPER
MANUFACTURED
BY KODAK

15

THIS PAPER
MANUFACTURED
BY KODAK

THIS PAPER
MANUFACTURED
BY KODAK

THIS PAPER
MANUFACTURED
BY KODAK

THIS PAPER
MANUFACTURED
BY KODAK

THIS
MANUF
BY

S PAPER
UFACTURED
BY KODAK

THIS PAPER
MANUFACTURED
BY KODAK

THIS PAPER
MANUFACTURED
BY KODAK

THIS PAPER
MANUFACTURED
BY KODAK

THIS PAPER
MANUFACTURED
BY KODAK

THIS PAPER
MANUFACTURED
BY KODAK

THIS PAPER
MANUFACTURED
BY KODAK

THIS PAPER
MANUFACTURED
BY KODAK

THIS PAPER
MANUFACTURED
BY KODAK

THIS
MANUF
BY

Girls

S PAPER
UFACTURED
BY KODAK

THIS PAPER
MANUFACTURED
BY KODAK

front left

THIS PAPER
MANUFACTURED
BY KODAK

THIS PAPER
MANUFACTURED
BY KODAK

THIS PAPER
MANUFACTURED
BY KODAK

THIS PAPER
MANUFACTURED
BY KODAK

THIS PAPER
MANUFACTURED
BY KODAK

THIS PAPER
MANUFACTURED
BY KODAK

THIS PAPER
MANUFACTURED
BY KODAK

THIS
MANUF
BY

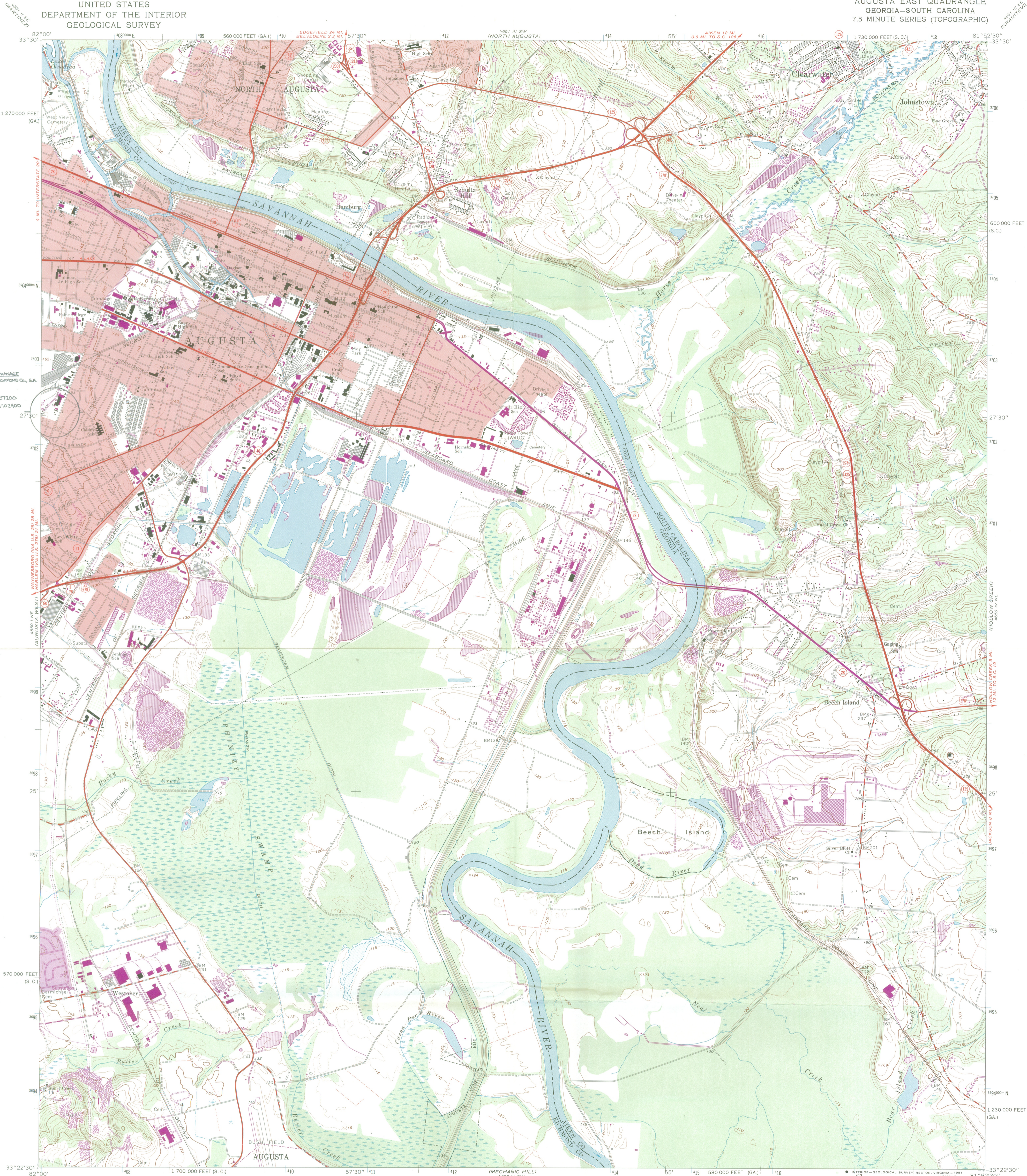
APER
ED

APER
ED

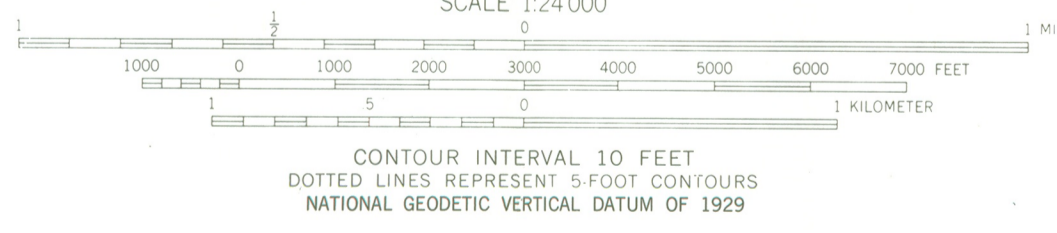
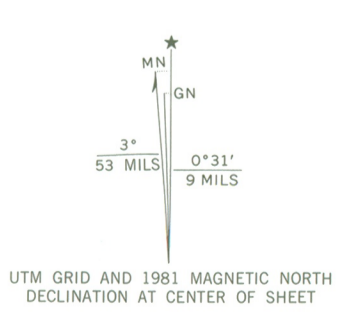
APER
ED

APER
ED

APER
ED



Mapped, edited, and published by the Geological Survey
Control by USGS, NOS/NOAA, USCE, Georgia Geodetic Survey
and South Carolina Geodetic Survey
Topography by photogrammetric methods from aerial
photographs taken 1962. Field checked 1965
Polyconic projection. 10,000-foot grid based on South
Carolina coordinate system, south zone and
Georgia coordinate system, east zone
1000-meter Universal Transverse Mercator grid ticks,
zone 17, shown in blue. 1927 North American Datum
To place on the predicted North American Datum 1983
move the projection lines 13 meters south and
15 meters west as shown by dashed corner ticks
Fine red dashed lines indicate selected fence and field lines where
generally visible on aerial photographs. This information is unchecked
Red tint indicates areas in which only landmark buildings are shown



THIS MAP COMPLIES WITH NATIONAL MAP ACCURACY STANDARDS
FOR SALE BY U.S. GEOLOGICAL SURVEY
DENVER, COLORADO 80225, OR RESTON, VIRGINIA 22092
A FOLDER DESCRIBING TOPOGRAPHIC MAPS AND SYMBOLS IS AVAILABLE ON REQUEST

Revisions shown in purple compiled from aerial photographs
taken 1977 and other sources. This information not
field checked. Map edited 1981
Purple tint indicates extension of urban areas

ROAD CLASSIFICATION

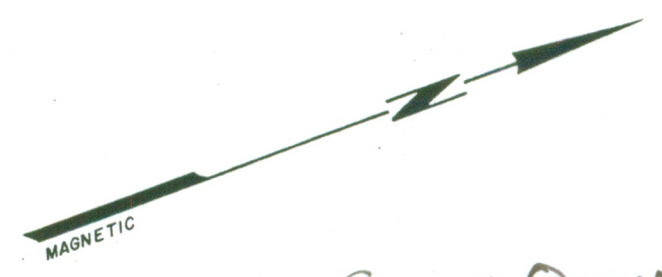
Primary highway, all weather, hard surface	Light-duty road, all weather, improved surface
Secondary highway, all weather, hard surface	Unimproved road, fair or dry weather

 Interstate Route
 U. S. Route
 State Route



AUGUSTA EAST, GA.-S. C.
N3322.5-W8152.5/7.5
1965
PHOTOREVISED 1981
DMA 4650 IV NW-SERIES V846

SHILOH ORPHANAGE
 AUGUSTA, RICHMOND COUNTY, GA.
 1" = 50'
 BOUNDARY IS INDICATED BY A HEAVY BLACK LINE.



1/ N/F WHITE 1/

HESTER ST. 30' R/W

1/ N/F TANKSIN 1/

1/ N/F LONG 1/

EMORY ST. 30' R/W

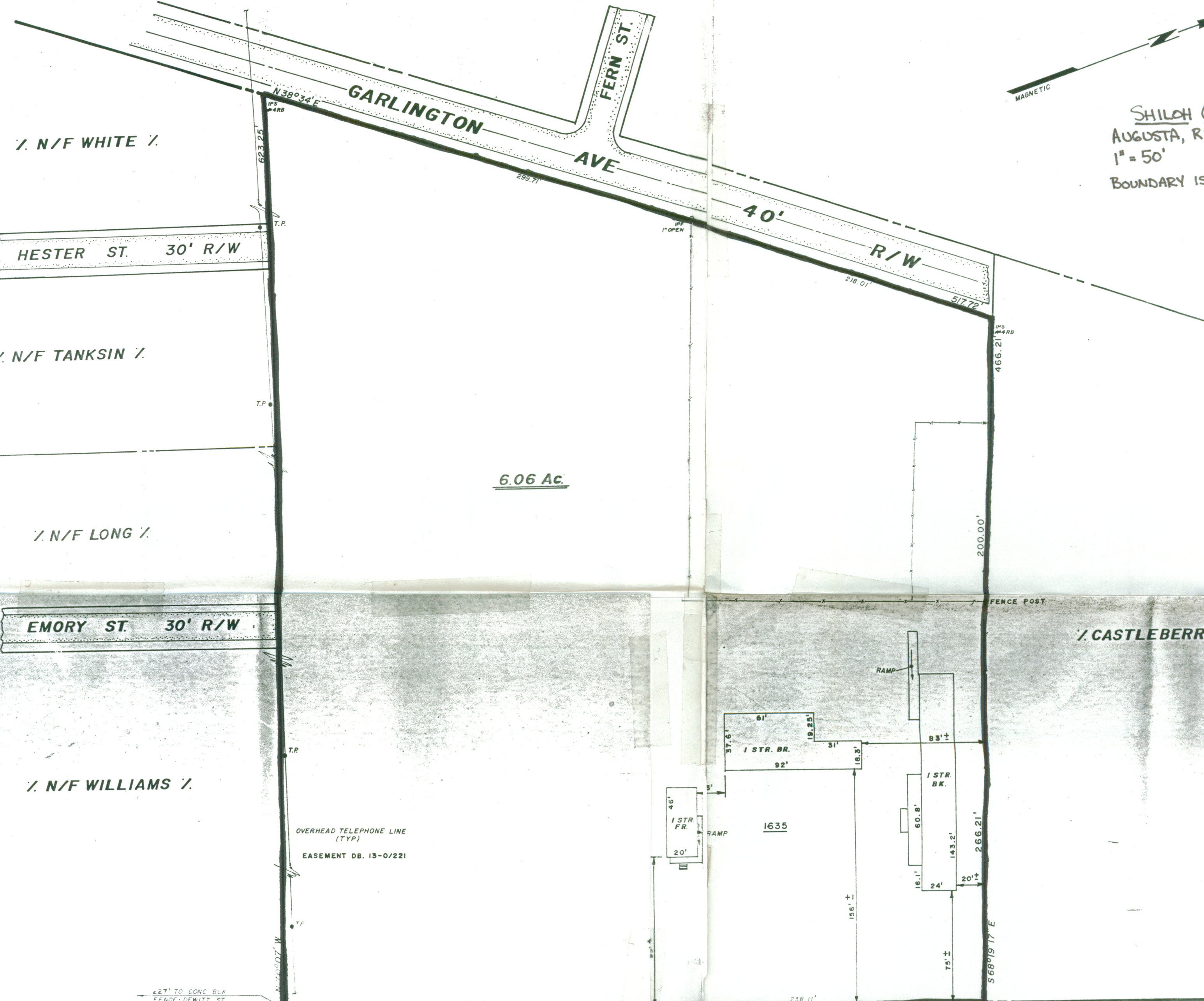
1/ N/F WILLIAMS 1/

OVERHEAD TELEPHONE LINE (TYP)
 EASEMENT DB. 13-0/221

627' TO CONC. BLK FENCE - DEWITT ST

6.06 Ac.

S 20° 55' W 475.91' 50' R/W TO AUGUSTA



SURVEY DATA:
 FIELD CLOSURE 1 FOOT IN 5000
 ANGULAR ERROR 0' 41"
 COMPASS RULE OF ADJUSTMENT
 PLAT CLOSURE 1 FOOT IN 10000
 TOPCON GTS-28

NOTE:
 THIS PROPERTY IS NOT LOCATED
 IN A FLOOD PRONE ZONE
 ACCORDING TO OFFICIAL
 FIA MAPS

REFERENCES:
 REALTY BOOKS - 2L/66; 93/148;
 23Y/185; 6Y/277
 REALTY REELS - 36/1366; 65/1229
 AN UNRECORDED PLAT FOR RICHMOND COUNTY
 BOARD OF EDUCATION BY BALDWIN ENGINEERING
 DATED NOVEMBER 16, 1953.

**BOUNDARY SURVEY
 FOR
 SHILOH COMPREHESIVE
 COMMUNITY CENTER**



GRAHAM, THORSTAD & ASSOCIATES
 ENGINEERS & SURVEYORS
 1115 1/2 N. ...
 AUGUSTA, GA. 30601
 H. James Graham



Georgia Department of Natural Resources

Lonice C. Barrett, Commissioner

Historic Preservation Division

Mark R. Edwards, Division Director and State Historic Preservation Officer
500 The Healey Building, 57 Forsyth Street, N. W., Atlanta, Georgia 30303
Telephone (404) 656-2840 Fax (404) 651-8739

November 18, 1996

Ms. Carol D. Shull
National Register of Historic Places
History Division
National Park Service
Post Office Box 37127
Washington, D.C. 20013-7127



Dear Ms. Shull:

Please find enclosed the following nominations to the National Register of Historic Places for your consideration:

Bethlehem Neighborhood Historic District, Richmond County, Georgia
Shiloh Orphanage, Richmond County, Georgia

Sincerely,

Lee A. Webb
Survey and Register Specialist

Enclosure