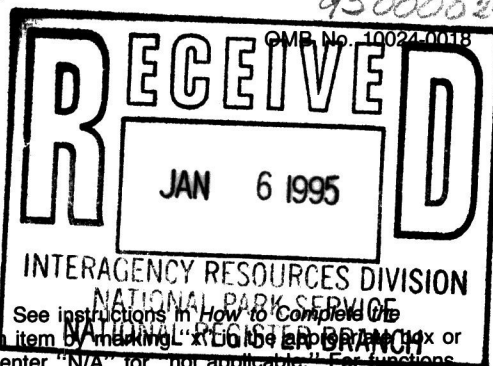


United States Department of the Interior
National Park Service

National Register of Historic Places
Registration Form



This form is for use in nominating or requesting determinations for individual properties and districts. See instructions in How to Complete the National Register of Historic Places Registration Form (National Register Bulletin 16A). Complete each item by marking "X" or by entering the information requested. If an item does not apply to the property being documented, enter "N/A" for "not applicable." For functions architectural classification, materials, and areas of significance, enter only categories and subcategories from the instructions. Place additional entries and narrative items on continuation sheets (NPS Form 10-900a). Use a typewriter, word processor, or computer, to complete all items.

1. Name of Property

historic name Lee School

other names/site number Lee Adult Education Center

2. Location

street & number 207 North Lee Street N/A ☐ not for publication

city or town Leesburg N/A ☐ vicinity

state Florida code FL county Lake code 069 zip code 34748

3. State/Federal Agency Certification

As the designated authority under the National Historic Preservation Act, as amended, I hereby certify that this ☒ nomination ☐ request for determination of eligibility meets the documentation standards for registering properties in the National Register of Historic Places and meets the procedural and professional requirements set forth in 36 CFR Part 60. In my opinion, the property ☒ meets ☐ does not meet the National Register criteria. I recommend that this property be considered significant ☐ nationally ☐ statewide ☒ locally. (☐ See continuation sheet for additional comments.)

Suzanne P. Walker/Deputy SHPO 1/3/95
Signature of certifying official/Title Date

State Historic Preservation Officer, Division of Historical Resources
State or Federal agency and bureau

In my opinion, the property ☐ meets ☐ does not meet the National Register criteria. (☐ See continuation sheet for additional comments.)

Signature of certifying official/Title Date

State or Federal agency and bureau

4. National Park Service Certification

I hereby certify that the property is:

- ☒ entered in the National Register.
☐ See continuation sheet.
- ☐ determined eligible for the National Register
☐ See continuation sheet.
- ☐ determined not eligible for the National Register.
- ☐ removed from the National Register.
- ☐ other, (explain:) _____

Signature of the Keeper

Date of Action

Beth Boland

2/12/95

Lee School
Name of Property

Lake, Florida
County and State

5. Classification

Ownership of Property

(Check as many boxes as apply)

- ☐ private
☒ public-local
☐ public-State
☐ public-Federal

Category of Property

(Check only one box)

- ☒ building(s)
☐ district
☐ site
☐ structure
☐ object

Number of Resources within Property

(Do not include previously listed resources in the count.)

Contributing

Noncontributing

2

0

buildings

sites

structures

objects

2

0

Total

Name of related multiple property listing

(Enter "N/A" if property is not part of a multiple property listing.)

N/A

Number of contributing resources previously listed in the National Register

0

6. Function or Use

Historic Functions

(Enter categories from instructions)

EDUCATION:

Elementary School

High School

Current Functions

(Enter categories from instructions)

EDUCATION:

Adult Education School

7. Description

Architectural Classification

(Enter categories from instructions)

Colonial Revival

Materials

(Enter categories from instructions)

foundation Concrete

walls Brick

roof Asphalt

other Brick: Porch

Narrative Description

(Describe the historic and current condition of the property on one or more continuation sheets.)

United States Department of the Interior
National Park Service

National Register of Historic Places
Continuation Sheet

Lee School
Leesburg, Lake County
Description

Section number 7 Page 1

Summary Paragraph

Historic Lee School, located at 207 North Lee Street in Leesburg, Florida, comprises two Colonial Revival style buildings constructed in 1915 and 1923. Both are two-story brick structures that front on Lee Street and share some similarities in style and decorative details. Both are basically rectangular plan, red brick buildings that rest on poured concrete foundations and have shallow-pitched hip roofs. The roofs have wide eaves and exposed rafter ends. Exterior decorative details are limited mainly to pilasters with concrete capitals and bases that flank the doorways and windows of the main facades of the buildings. Both buildings retain most of their original windows and interior finishes.

Supporting Narrative

South Building, Exterior

The main (east) facade of the south building (Photo 1) is divided into three major bays, with a central recessed block flanked by two wings. The central section of the facade consists of eight bays, two of which are occupied by a two-story entrance pavilion. The main entrance stands at the head of a flight of concrete steps, flanked by solid concrete balustrades. The doorway is recessed into the entrance pavilion and consists of a single leaf glass and aluminum door framed by plate glass sidelights and transom lights. The door and window bays in the central block of the main facade are separated by brick pilasters with cast concrete capitals and bases (Photo 2). Pilasters on the entrance pavilion are found on both stories, being separated by a frieze with a rectangular recessed panel in its center. The other pilasters on the facade are two stories high and rise from the level of the window sills of the first story to the cornice level of the windows of the second. The major original fenestration in the building consists of wood frame pivot windows with 1/2/1 lights.

The wings each have three-bay facades. The first and second stories are separated by a frieze band bordered by concrete string courses. There is a granite string course that marks the juncture of the basement with the brick structure above (Photo 3). The sills of the windows on the first story rest upon a continuous string course, and all three string courses continue to the other elevations of the building (Photos 4-5). The south elevation of the building (Photo 6) has a secondary entrance near its center that lies at the head of

**United States Department of the Interior
National Park Service**

**National Register of Historic Places
Continuation Sheet**

Lee School
Leesburg, Lake County
Description

Section number 7 Page 2

concrete steps similar to those found on the main facade. Above the entranceway on the second story is a metal emergency stairway. There is also an entranceway to the basement of the building located near the southwest corner of the elevation. The rear (west) elevation (Photos 7-8) has an entrance that is sheltered by a flat roofed porch and reached by transverse steps leading to a high stoop. An elevator tower (Photo 8) that provides access to both floors of the building is attached to the north elevation of the building. This elevation also features metal fire escape stairs, and there is a covered entranceway to the school basement similar to the one found on the south elevation (Photo 7).

South Building, Interior

The interior of south building contains most of its original hardware and finishes. However, a dropped ceiling has been added to allow the installation of air conditioning, and the original light fixtures have been replaced by florescent lighting units. The main entrance opens onto a short hall (Photo 9) flanked by rest rooms and storage areas. This hall terminates at a transverse hallway (Photo 10) near the school offices. The first floor contains four classrooms. These are found at the four corners of the building at the ends of the transverse hallway. Small foyers at both ends of the hallway contain secondary entrances and stairways to the second floor (Photo 11). These foyers are separated from the hall by glass brick walls. The second floor contains five classrooms, a library, teachers' lounge, and rest rooms (Photos 12-13).

North Building, Exterior

Despite some similarities to the south building, the north building is distinctively different in many ways. The main (east) facade (Photos 14-15) is asymmetrical, and the main entrance is not centrally located. A projecting entrance pavilion is flanked by two wings, the south one of which is two bays wide, whereas the north wing has four window bays. The structure rests on a low concrete foundation, so the main entrance stands at the top of a low stoop recessed in the entrance pavilion. The pavilion rises three stories, terminating in a hip roof dormer. Like the south building, the entrance is flanked by pilasters with concrete caps and bases (Photo 16), and there is also a frieze separating the first and second stories. A third set of pilasters frames the windows in the dormer on the main facade. The building has a hip roof with three hip dormers.

United States Department of the Interior
National Park ServiceNational Register of Historic Places
Continuation SheetSection number 7 Page 3Lee School
Leesburg, Lake County
Description

The main entrance has a double leaf wood and glass panel door surrounded by mullioned side lights and a transom (Photo 14). The major windows in the building are 12/1 light double hung wooden sashes. The windows in the facade dormer are 8/1 light sashes, while those in the dormers on the side elevations have 20 light pivot windows. The secondary entrances in the side elevations are set in shallow one-story pavilions. The one on the north elevation has a hip roof (Photo 17) while the one on the south features a gable roof. A one-story ell is found at the northwest corner of the building. There is a metal stairway in the middle of the rear elevation that is sheltered by an extension of the eaves of the main roof (Photo 18). The bay arrangement of the rear elevation is irregular, and a large area of the wall surface has been stuccoed. The appearance of this area reflects the removal in 1974 of the twelve room addition that had been constructed in 1926.

North Building, Interior

The north building contains even more of its original interior finishes than does the south building. Still evident is the richly decorated pressed metal ceiling, which features coffer panels and an ornate wall cornice (Photo 19). The building does contain modern florescent light fixtures, but these have been attached to the original ceiling. The main entrance opens onto a hallway that runs the length of the building (Photos 19-20). This is met beyond the midpoint by a shorter hallway, leading to the south exit of the building. A single stairway located just inside the main entrance connects the first and second floors (Photo 21). It is constructed of wood and has turned balusters.

The first floor contains three classrooms, two large ones on the north side of the main hall and a small one on the south. Entrance to the small classroom is gained via the shorter hallway, which also provides access to one of the two rest rooms at the rear of the building. The second floor contains four classrooms (Photo 22), an office, and a rest room. One large classroom and the office lie on the south side of the main hall. The other three classrooms are accessed by a short transverse hallway running north from the stair landing area (Photo 23). The upper floor also has a rest room at the rear of the building.

United States Department of the Interior
National Park Service

National Register of Historic Places
Continuation Sheet

Section number 7 Page 4

Lee School
Leesburg, Lake County
Description

Major Alterations to the Buildings

Most of the alterations to the school property have been touched on in the above narrative. An elevator tower was added to the north elevation of the south building to provide handicapped access (Photo 8), and dropped ceilings were installed to provide space for centralized air conditioning ductwork. The twelve rooms that were added to the rear of the north building in 1926 were declared structurally unsound and demolished in 1974 when the building became an adult education center. The separate auditorium that had been erected behind the south building was torn down in 1962 to make way for the cafetorium (combination cafeteria and auditorium) that still stands on the school property.

Noncontributing Buildings

There are three noncontributing buildings on the school property that are not contained within the boundaries that encompass the historic school buildings. One is the cafetorium, a one-story concrete block building with a flat roof and awning windows (Photo 24). The other two are portable wooden buildings (Photo 25) that were set up on the property in 1990. Both have gable roofs and rest upon concrete block foundations. They are plain, rectangular structures with wall board siding that have few defining details.

**United States Department of the Interior
National Park Service**

**National Register of Historic Places
Continuation Sheet**

Lee School
Leesburg, Lake County
Photographs

Section number 7 Page 5

List of Photographs

1. Lee School, 207 North Lee Street
2. Leesburg (Lake County), Florida
3. Bob Burke
4. 1994
5. Lee Adult Education Center
6. South Building, East Facade, Looking West
7. Photo No. 1 of 25

1. Lee School, 207 North Lee Street
2. Leesburg (Lake County), Florida
3. Bob Burke
4. 1994
5. Lee Adult Education Center
6. South Building, Detail, East Facade, Looking West
7. Photo No. 2 of 25

1. Lee School, 207 North Lee Street
2. Leesburg (Lake County), Florida
3. Bob Burke
4. 1994
5. Lee Adult Education Center
6. South Building, Detail, East Facade, Looking Northwest
7. Photo No. 3 of 25

1. Lee School, 207 North Lee Street
2. Leesburg (Lake County), Florida
3. Bob Burke
4. 1994
5. Lee Adult Education Center
6. South Building, South Elevation & East Facade, Looking Northwest
7. Photo No. 4 of 25

1. Lee School, 207 North Lee Street
2. Leesburg (Lake County), Florida
3. Bob Burke
4. 1994
5. Lee Adult Education Center
6. South Building, South & West Elevations, Looking Northeast
7. Photo No. 5 of 25

**United States Department of the Interior
National Park Service**

**National Register of Historic Places
Continuation Sheet**

Lee School
Leesburg, Lake County
Photographs

Section number 7 Page 6

1. Lee School, 207 North Lee Street
2. Leesburg (Lake County), Florida
3. Bob Burke
4. 1994
5. Lee Adult Education Center
6. South Building, South Elevation, Looking North
7. Photo No. 6 of 25

1. Lee School, 207 North Lee Street
2. Leesburg (Lake County), Florida
3. Bob Burke
4. 1994
5. Lee Adult Education Center
6. South Building, West & North Elevations, Looking Southeast
7. Photo No. 7 of 25

1. Lee School, 207 North Lee Street
2. Leesburg (Lake County), Florida
3. Bob Burke
4. 1994
5. Lee Adult Education Center
6. South Building, East Facade & North Elevation, Looking Southwest
7. Photo No. 8 of 25

1. Lee School, 207 North Lee Street
2. Leesburg (Lake County), Florida
3. Bob Burke
4. 1994
5. Lee Adult Education Center
6. South Building, Main Entrance Hall, Looking West
7. Photo No. 9 of 25

1. Lee School, 207 North Lee Street
2. Leesburg (Lake County), Florida
3. Bob Burke
4. 1994
5. Lee Adult Education Center
6. South Building, 1st Floor Transverse Hallway, Looking North
7. Photo No. 10 of 25

**United States Department of the Interior
National Park Service**

**National Register of Historic Places
Continuation Sheet**

Lee School
Leesburg, Lake County
Photographs

Section number 7 Page 7

1. Lee School, 207 North Lee Street
2. Leesburg (Lake County), Florida
3. Bob Burke
4. 1994
5. Lee Adult Education Center
6. South Building, 1st Floor North Stairs, Looking North
7. Photo No. 11 of 25

1. Lee School, 207 North Lee Street
2. Leesburg (Lake County), Florida
3. Bob Burke
4. 1994
5. Lee Adult Education Center
6. South Building, 2nd Floor Hall, Looking North
7. Photo No. 12 of 25

1. Lee School, 207 North Lee Street
2. Leesburg (Lake County), Florida
3. Bob Burke
4. 1994
5. Lee Adult Education Center
6. South Building, 2nd Floor Library, Looking West
7. Photo No. 13 of 25

1. Lee School, 207 North Lee Street
2. Leesburg (Lake County), Florida
3. Bob Burke
4. 1994
5. Lee Adult Education Center
6. North Building, Main (East) Facade, Looking West
7. Photo No. 14 of 25

1. Lee School, 207 North Lee Street
2. Leesburg (Lake County), Florida
3. Bob Burke
4. 1994
5. Lee Adult Education Center
6. North Building, East Facade & South Elevation, Looking Northwest
7. Photo No. 15 of 25

**United States Department of the Interior
National Park Service**

**National Register of Historic Places
Continuation Sheet**

Lee School
Leesburg, Lake County
Photographs

Section number 7 Page 8

1. Lee School, 207 North Lee Street
2. Leesburg (Lake County), Florida
3. Bob Burke
4. 1994
5. Lee Adult Education Center
6. North Building, Window Detail, East Facade
7. Photo No. 16 of 25

1. Lee School, 207 North Lee Street
2. Leesburg (Lake County), Florida
3. Bob Burke
4. 1994
5. Lee Adult Education Center
6. North Building, North Elevation, Looking South
7. Photo No. 17 of 25

1. Lee School, 207 North Lee Street
2. Leesburg (Lake County), Florida
3. Bob Burke
4. 1994
5. Lee Adult Education Center
6. North Building, West & South Elevations, Looking Northeast
7. Photo No. 18 of 25

1. Lee School, 207 North Lee Street
2. Leesburg (Lake County), Florida
3. Bob Burke
4. 1994
5. Lee Adult Education Center
6. North Building, 1st Floor Hall, Looking East
7. Photo No. 19 of 25

1. Lee School, 207 North Lee Street
2. Leesburg (Lake County), Florida
3. Bob Burke
4. 1994
5. Lee Adult Education Center
6. North Building, 1st Floor Hall, Looking East
7. Photo No. 20 of 25

United States Department of the Interior
National Park Service

National Register of Historic Places
Continuation Sheet

Lee School
Leesburg, Lake County
Photographs

Section number 7 Page 9

1. Lee School, 207 North Lee Street
2. Leesburg (Lake County), Florida
3. Bob Burke
4. 1994
5. Lee Adult Education Center
6. North Building, Stairway & Hall, Looking West
7. Photo No. 21 of 25

1. Lee School, 207 North Lee Street
2. Leesburg (Lake County), Florida
3. Bob Burke
4. 1994
5. Lee Adult Education Center
6. North Building, 2nd Floor Classroom, Looking East
7. Photo No. 22 of 25

1. Lee School, 207 North Lee Street
2. Leesburg (Lake County), Florida
3. Bob Burke
4. 1994
5. Lee Adult Education Center
6. North Building, 2nd Floor Hall, Looking East
7. Photo No. 23 of 25

1. Lee School, 207 North Lee Street
2. Leesburg (Lake County), Florida
3. Bob Burke
4. 1994
5. Lee Adult Education Center
6. Cafetorium, North Elevation
7. Photo No. 24 of 25

1. Lee School, 207 North Lee Street
2. Leesburg (Lake County), Florida
3. Bob Burke
4. 1994
5. Lee Adult Education Center
6. Portable Buildings, East Elevations
7. Photo No. 25 of 25

Lee School
Name of Property

Lake, Florida
County and State

8. Statement of Significance

Applicable National Register Criteria

(Mark "x" in one or more boxes for the criteria qualifying the property for National Register listing.)

- ☒ **A** Property is associated with events that have made a significant contribution to the broad patterns of our history.
- ☐ **B** Property is associated with the lives of persons significant in our past.
- ☒ **C** Property embodies the distinctive characteristics of a type, period, or method of construction or represents the work of a master, or possesses high artistic values, or represents a significant and distinguishable entity whose components lack individual distinction.
- ☐ **D** Property has yielded, or is likely to yield, information important in prehistory or history.

Criteria Considerations

(Mark "x" in all the boxes that apply.)

Property is:

- ☐ **A** owned by a religious institution or used for religious purposes.
- ☐ **B** removed from its original location.
- ☐ **C** a birthplace or grave.
- ☐ **D** a cemetery.
- ☐ **E** a reconstructed building, object, or structure.
- ☐ **F** a commemorative property.
- ☐ **G** less than 50 years of age or achieved significance within the past 50 years.

Narrative Statement of Significance

(Explain the significance of the property on one or more continuation sheets.)

9. Major Bibliographical References

Bibliography

(Cite the books, articles, and other sources used in preparing this form on one or more continuation sheets.)

Previous documentation on file (NPS):

- ☐ preliminary determination of individual listing (36 CFR 67) has been requested
- ☐ previously listed in the National Register
- ☐ previously determined eligible by the National Register
- ☐ designated a National Historic Landmark
- ☐ recorded by Historic American Buildings Survey

- ☐ recorded by Historic American Engineering
Record # _____

Areas of Significance

(Enter categories from instructions)

Education

Architecture

Period of Significance

1915-1928

Significant Dates

1915

1923

1926

Significant Person

(Complete if Criterion B is marked above)

N/A

Cultural Affiliation

N/A

Architect/Builder

Carr, W.H. (Architect)

Primary location of additional data:

- ☒ State Historic Preservation Office
- ☐ Other State agency
- ☐ Federal agency
- ☐ Local government
- ☐ University
- ☐ Other

Name of repository:

Lee School
Name of Property

Lake, Florida
County and State

10. Geographical Data

Acreage of Property Less than 2

UTM References

(Place additional UTM references on a continuation sheet.)

1	17	414000	3187400
Zone	Easting	North	ing
2			

3			
Zone	Easting	North	ing
4			

☐ See continuation sheet

Verbal Boundary Description

(Describe the boundaries of the property on a continuation sheet.)

Boundary Justification

(Explain why the boundaries were selected on a continuation sheet.)

11. Form Prepared By

name/title W. Carl Shiver, Historic Preservation Planner

organization Bureau of Historic Preservation date 12/30/94

street & number 500 S. Bronough Street telephone (904) 487-2333

city or town Tallahassee state Florida zip code 32399-0250

Additional Documentation

Submit the following items with the completed form:

Continuation Sheets

Maps

A **USGS map** (7.5 or 15 minute series) indicating the property's location.

A **Sketch map** for historic districts and properties having large acreage or numerous resources.

Photographs

Representative **black and white photographs** of the property.

Additional items

(Check with the SHPO or FPO for any additional items)

Property Owner

(Complete this item at the request of SHPO or FPO.)

name Lake County School Board

street & number 201 W. Burleigh Blvd. telephone (904) 343-3531

city or town Tavares state FL zip code 32778

Paperwork Reduction Act Statement: This information is being collected for applications to the National Register of Historic Places to nominate properties for listing or determine eligibility for listing, to list properties, and to amend existing listings. Response to this request is required to obtain a benefit in accordance with the National Historic Preservation Act, as amended (16 U.S.C. 470 *et seq.*).

Estimated Burden Statement: Public reporting burden for this form is estimated to average 18.1 hours per response including time for reviewing instructions, gathering and maintaining data, and completing and reviewing the form. Direct comments regarding this burden estimate or any aspect of this form to the Chief, Administrative Services Division, National Park Service, P.O. Box 37127, Washington, DC 20013-7127; and the Office of Management and Budget, Paperwork Reductions Projects (1024-0018), Washington, DC 20503.

United States Department of the Interior
National Park Service

National Register of Historic Places
Continuation Sheet

Lee School
Leesburg, Lake County
Significance

Section number 8 Page 1

Summary Paragraph

Lee School is eligible for listing in the National Register of Historic Places under criteria A and C in the areas of architecture and education. Opened in 1915, it was the first "modern" educational facility erected in Leesburg. Under criterion A, the school has significance as the community's oldest educational institution. It is tied closely with the historical development of Leesburg and continues to make a contribution to the educational life of the city. Designed by architect W.H. Carr, both buildings reflect the influence of the Colonial Revival style which gained favor in the design of educational buildings in the early part of the twentieth century.

Historical Background

In 1849, Arthur Lee brought his family from Alabama to homestead an area near Adamsville in Sumter County. His large family would form the nucleus of Leesburg, the oldest and largest city in Lake County. Other family members soon followed. In 1866, his relatives Evander and Calvin Lee opened a store on what was to become the main street of Leesburg. Evander's son, L.B. Lee, worked as a clerk in his father's store and built the first residence in the community, a log cabin that stood about a block east of the store. The lack of adequate transportation proved a problem in getting goods for the store. A boat line came down as far as Silver Springs, and Josiah Lee, another family member, who had established a cotton gin and grist mill at his place on Lake Griffin, trucked all goods from Silver Springs by mule drawn wagons.

Calvin Lee met Colonel H.L. Hart in Palatka, a port community on the St. Johns River, and induced him to start a boat line from Palatka to Leesburg. A barge channel was cleared in the Oklawaha River, a tributary of the St. Johns, to Lake Griffin. The first boat docked at the newly named settlement of Leesburg on November 10, 1867. Soon boats were carrying passengers and freight between Jacksonville, at the mouth of the St. Johns, and Leesburg.

Josiah Lee, who had been elected as a representative to the Florida Legislature, proposed that Sumter County should build a courthouse in Leesburg. In 1868, the commissioners authorized the purchase of a tract of land to be sold as town lots, retaining a site for the courthouse. In May, 1874, L.B. Lee sold 80 acres to the county for \$500 cash, and Leesburg became the county seat. A wood frame

United States Department of the Interior
National Park Service

National Register of Historic Places
Continuation Sheet

Lee School
Leesburg, Lake County
Significance

Section number 8 Page 2

courthouse was erected on a lot later occupied by a commercial building. In 1882, the county seat was returned to its original site of Sumterville.

A meeting of the entire population of 150 people in Leesburg was held on July 12, 1875, where they voted for the incorporation of the community as a town. On May 27, 1887, Lake County was created by the Florida Legislature from portions of Sumter and Orange counties. The town of Bloomfield was made the temporary county seat until an election could be held later in the year to choose a permanent site of the county government. The competition between Leesburg and Tavares was strong, but in the closely contested election Tavares came out the winner.

The earliest railroad in Lake County was the St. Johns and Lake Eustis which ran only from Astor to Fort Mason. In 1883, the Florida Southern Railroad Company began work to extend its line from Ocala to Leesburg, and on January 20, 1884, the first train pulled into town. The company was taken over by the Plant System in 1895, and the line was extended to Tampa. The Atlantic Coast Line took control of the company after a few years and built a passenger station on Main Street. A second station was constructed on Palmetto Street a short time later by the Seaboard Air Line.

The old courthouse building in Leesburg was purchased by Dr. Josephus Anderson and moved to what is now South Fifth Street. The land on which it had stood was given to E.H. Mote in exchange for agreeing to build a hotel upon the property. The wooden building was the first boarding house in the town and eventually became an annex to a brick hotel.

The economic foundation of Leesburg in the late nineteenth century was--as it is today--the citrus industry. The growth of the community had been steady since its first days until the winter of 1894-1895 when two disastrous freezes destroyed the ripening crop of fruit and killed most of the trees. Thousands of trees were lost throughout the Florida citrus belt. Large numbers of residents in the affected communities, including Leesburg, abandoned their groves and businesses to seek employment elsewhere.

Some of the residents of Leesburg who decided to "tough it out" turned to the growing of other crops, creating truck farms producing lettuce, tomatoes, cucumbers, and watermelons. Citrus trees were

United States Department of the Interior
National Park Service

National Register of Historic Places
Continuation Sheet

Lee School
Leesburg, Lake County
Significance

Section number 8 Page 3

replanted, and within a decade citrus once again became a mainstay of the economy. The recovery was slow in coming but prompted a new round of construction in Leesburg by c. 1910. Both of Leesburg's banks had failed as a result of the freeze, but a new bank was organized in 1906, and in 1917 the Citizen's Bank of Leesburg became the first national bank to be formed in Lake County. Before World War I, Leesburg had acquired a centralized water system, an electric power plant, and some paved streets.

Historic Significance

The first schools in Leesburg were private institutions. A little log cabin at the site of Lone Oak cemetery was used at first, with a Miss Nellie Livingston and a Mr. Garrett as the first teachers. A later building was located where the present city hall now stands. The first floor was used as a school and for church services, while the second floor served as a Masonic lodge meeting hall. The first public school in Leesburg was established in 1889. There was no county or state money for building schools at that time. The citizens of the town purchased a brick building on 13th Street from the Florida Methodist Conference for \$4,000.

Renewed prosperity in Lake County at the beginning of the second decade of the twentieth century prompted the County Board of Public Instruction to construct a series of centralized "modern" schools. Between 1914 and 1916 the building program produced schools in Clermont, Umatilla, Tavares, and Leesburg. Pupils in rural districts were transported to the larger schools where they could benefit from better facilities. Approximately \$100,000 was expended by the county for the building and operation of schools during this period. The consolidation of schools meant that more money could be spent on fewer and more efficient facilities. In 1914, the old school on 13th Street in Leesburg was condemned, and \$40,000 was appropriated to acquire a six acre site in town on which to build a classroom building and a separate auditorium. The building, designed to hold grades 1 through 12, was complete by the spring of 1915.

The south building housed all the grades until 1918, when further consolidation activity by the Board of Public Instruction prompted the construction of the north building. The structure was completed in 1923 and became the high school. More space was needed by 1926, so twelve rooms were added to the newer structure. Enrollment at Lee School, however, continued to grow so rapidly that overcrowding made

United States Department of the Interior
National Park Service

National Register of Historic Places
Continuation Sheet

Lee School
Leesburg, Lake County
Significance

Section number 8 Page 4

it necessary to hold some classes in nearby churches. A new building to house the junior and senior high school students was constructed on 14th Street and opened in 1928. Until 1974, when the remainder of its students were moved to other schools in the community, Lee School operated as an elementary school. The school also served as a community center and a hurricane shelter. During World War II ration books were issued at the school, and the facility served as a day care center for children of mothers working in the war effort.

The erection of new schools in Leesburg during the 1950s and 60s permitted the transfer of the students at Lee School to newer facilities. For a time the buildings stood vacant, but in 1974, the complex became the home of the Lee Adult Education Center. The center provides citizens of Lake County who have not finished high school with the opportunity to obtain a diploma.

Architectural Significance

Lee School is a significant visual and architectural landmark in Leesburg. The Colonial Revival and Gothic Revival styles gained favor for the design of educational institutions in America during the early part of the twentieth century as being emblematic of the classical and scholastic traditions in learning. The Colonial Revival style was also linked with America's national traditions derived in part from the architectural character of such early institutions as the University of Virginia, designed by Thomas Jefferson.

Schools constitute a building type of which few historic models remain in many parts of the country. In Florida most communities initially built primitive wood frame schoolhouses, of which few have survived. As the importance of primary and secondary education became more apparent to the citizens of the state, most of these early buildings were demolished to make way for more permanent and efficient structures. Lee School shares the characteristics of many schools constructed throughout Florida during the 1920s. Usually they were masonry buildings, two stories in height that displayed Gothic or Classical detailing.

There were also a substantial number of Mediterranean Revival style schools, owing to the popularity of the style during the real estate boom period of the 1920s. The interior designs of the new schools reflected the latest and most "progressive" views on the proper designs for schools. The rooms were spacious and designed to

**United States Department of the Interior
National Park Service**

**National Register of Historic Places
Continuation Sheet**

Lee School
Leesburg, Lake County
Significance

Section number 8 Page 5

admit generous amounts of natural light and fresh air. Central heating was installed, and the facilities had cafeterias, libraries, and auditoriums to provide an atmosphere conducive to learning and to insure the overall health and welfare of the children.

Lee School embodied at least some of these principles. It had separate classrooms for the different grades, an auditorium, a library, and offices for school administrators. Both natural and artificial lighting illuminated the major interior spaces, and large windows provided fresh air and helped cool the interiors of the buildings during warmer months. Both buildings had central heating, and all the classrooms had school desks, blackboards, and storage areas for school supplies and equipment. The original auditorium may also have done double duty as an assembly hall and school lunchroom, as did the cafetorium erected in 1962.

United States Department of the Interior
National Park Service

National Register of Historic Places
Continuation Sheet

Section number 9 Page 1

Lee School
Leesburg, Lake County
Bibliography

-
- Bailey, Thomas D. Trails in Florida Education. Tallahassee: Florida State University, 1963.
- Cochran, Thomas Everette. History of Public-School Education in Florida. Lancaster, Pa.: Press of the New Era Printing Co., 1921
- Cutler, Harry. History of Florida. 3 vols. Chicago: Lewis Publishing Company, 1923.
- Dovell, Junius. Florida: Historic, Dramatic, Contemporary. 4 vols. New York, 1952.
- Florida State University. Education in Florida, Past and Present. Tallahassee: Florida State University, 1954.
- Florida Department of State. Florida, An Advancing State, 1907-1927. Tallahassee: Department of State, 1927.
- Kennedy, William T. History of Lake County, Florida. St. Augustine: The Record Company, 1929.
- Leesburg Centennial Association. Leesburg Centennial, Commemorating 100 Years of Progress 1857-1957. Souvenir Program. Leesburg: The Association, 1957.
- Martin, S. Walter. Florida During the Territorial Days. Philadelphia, 1974.
- Morris, Allen. The Florida Handbook. Tallahassee: Peninsular Publishing Company, 1949.
- Pettengill, George W., Jr. "The Story of the Florida Railroads, 1834-1903," Railroad and Locomotive Historical Society 86 (July 1952) 7-130.
- Phelps, John, comp. The People of Lawmaking in Florida, 1822-1991. Tallahassee: Florida House of Representatives, 1991.
- Polk, R.L., comp. Florida State Gazetteer and Business Directory. Jacksonville: R.L. Polk Company, 1907-1925.

**United States Department of the Interior
National Park Service**

**National Register of Historic Places
Continuation Sheet**

Lee School
Leesburg, Lake County
Bibliography

Section number 9 Page 2

Preu, Jane, ed. Florida Educators. Tallahassee: Florida State University, 1959.

Rerick, Rowland. Memoirs of Florida. 2 vols. Atlanta: Southern Historical Society, 1902.

Tebeau, Charlton. A History of Florida. Coral Gables: University of Miami Press, 1971.

United States Department of the Interior
National Park Service

**National Register of Historic Places
Continuation Sheet**

Section number 10 Page 1

Lee School
Leesburg, Lake County
Boundary Description and
Justification

Boundary Description

Beginning at the northwest corner of the intersection of Lee Street and Herndon Street, run west along the north curb line of Herndon Street approximately 150 feet, then run north between the building known as the cafetorium and the historic south and north school buildings approximately 375 feet to the south boundary of the parking lot located north of the north school building, then run east along said boundary line to the west curb line of Lee Street, then run south along said curb line to the point of beginning.

Boundary Justification

The above boundaries encompass all of the remaining historical resources that were associated with Lee School during the period 1915-1928.

PERKINS STREET

BASEBALL DIAMOND

BASEBALL DIAMOND

W. LINE STREET

HERNDON STREET

CAFETORIUM

PORTABLE

PORTABLE

PARKING

Boundary Line

HISTORICAL SUBJECT
SOUTH BUILDING

HISTORICAL SUBJECT
NORTH BUILDING

MAIN
ENTRANCE

MAIN
ENTRANCE

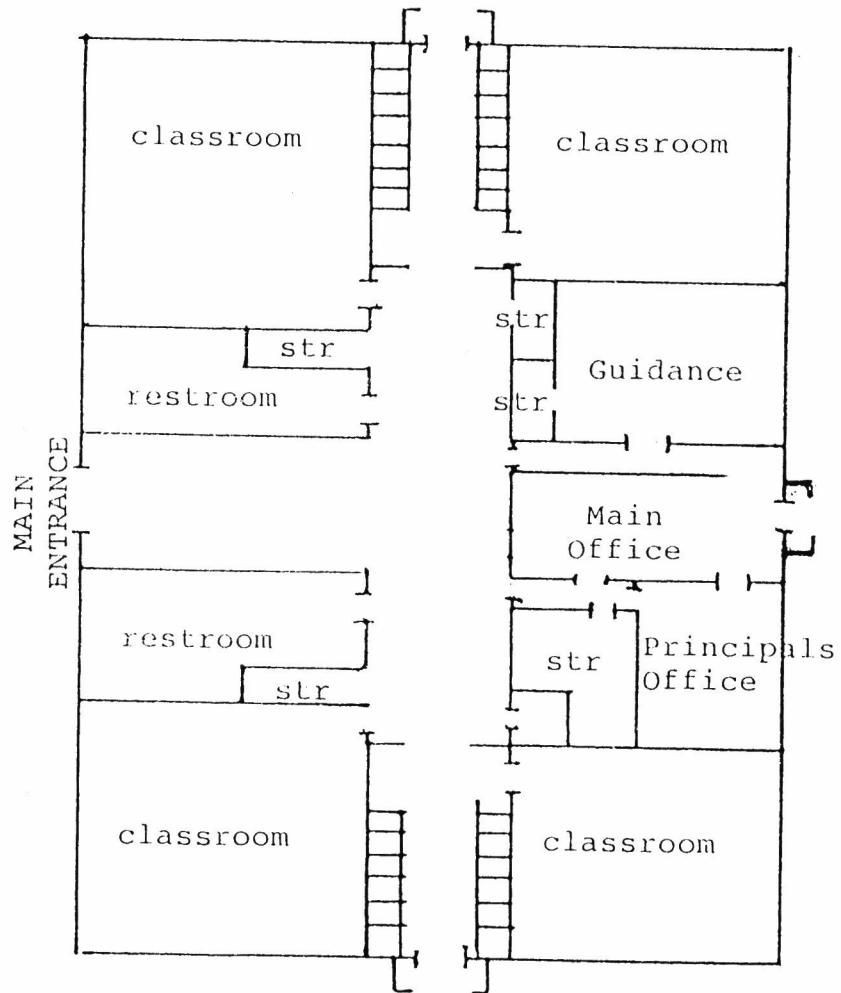
scale
3/4" = 50'
approximate



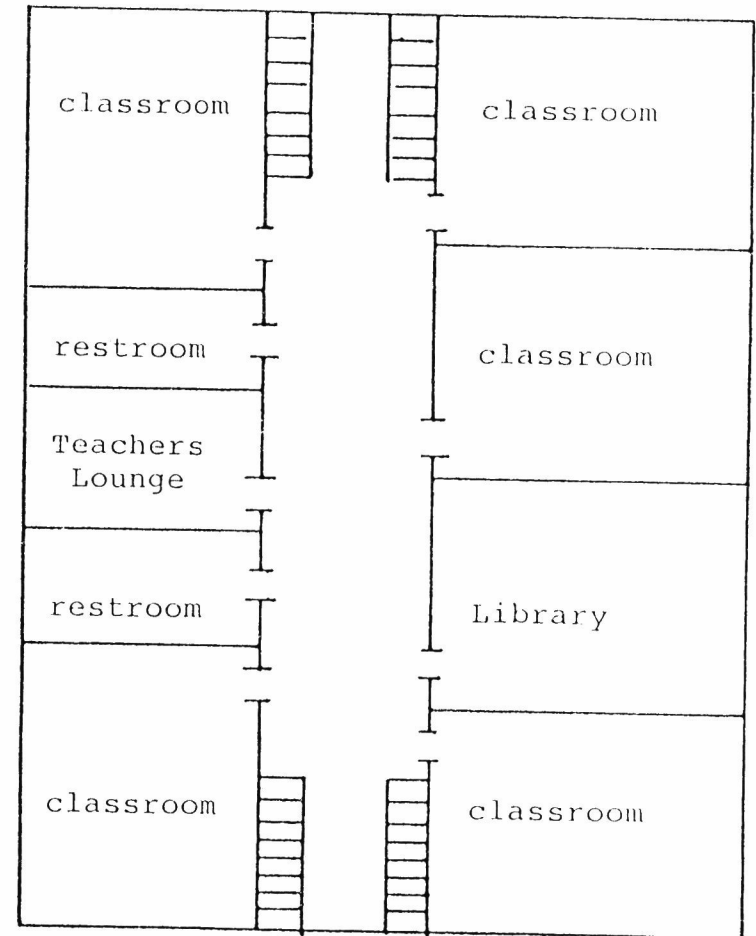
N. LEE STREET

LEE EDUCATION CENTER

Lee Education Center
207 N. Lee Street
Leesburg, Florida



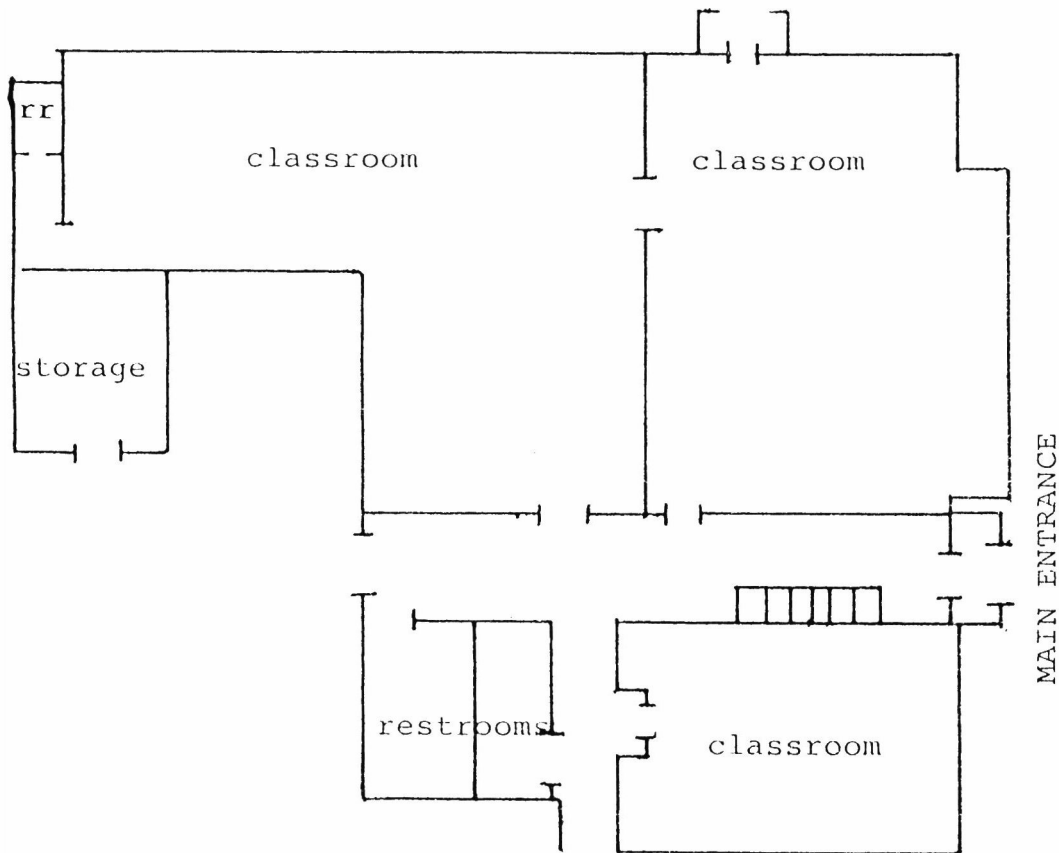
SOUTH BUILDING
First Floor



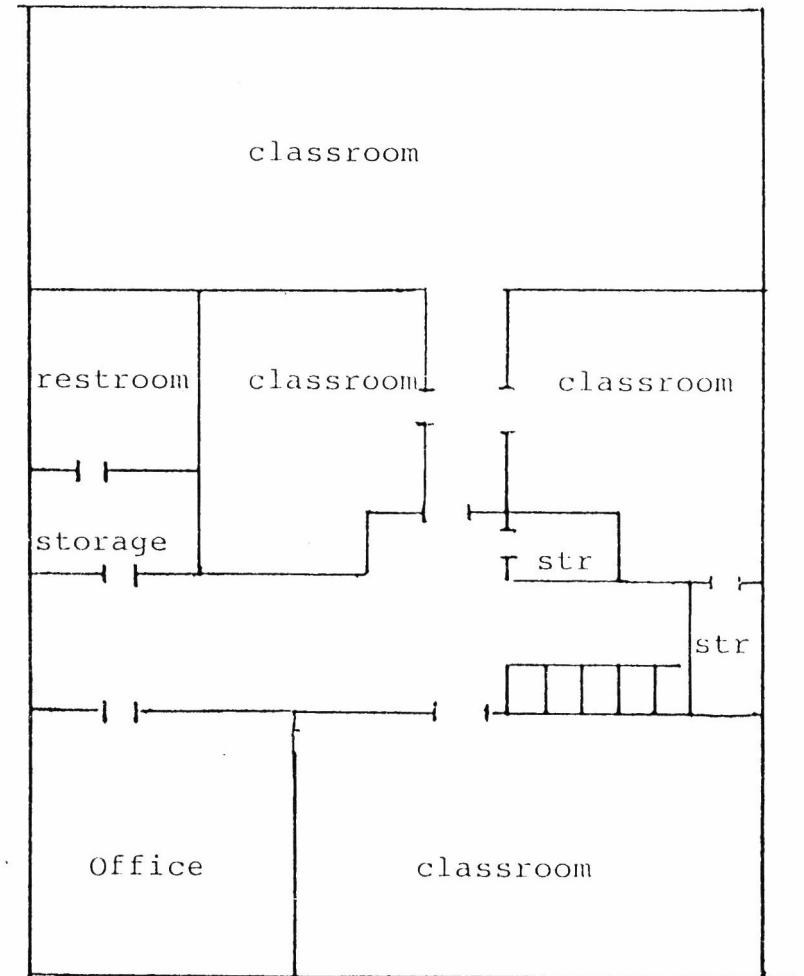
SOUTH BUILDING
Second Floor

.045" = 1 ft. North ↓

Lee Education Center
207 N. Lee Street
Leesburg, Florida



NORTH BUILDING
First Floor



NORTH BUILDING
Second Floor

UNITED STATES DEPARTMENT OF THE INTERIOR
NATIONAL PARK SERVICE

NATIONAL REGISTER OF HISTORIC PLACES
EVALUATION/RETURN SHEET

REQUESTED ACTION: NOMINATION

PROPERTY Lee School
NAME:

MULTIPLE
NAME:

STATE & COUNTY: FLORIDA, Lake

DATE RECEIVED: 1/06/95 DATE OF PENDING LIST: 1/18/95
DATE OF 16TH DAY: 2/03/95 DATE OF 45TH DAY: 2/20/95
DATE OF WEEKLY LIST:

REFERENCE NUMBER: 95000024

NOMINATOR: STATE

REASONS FOR REVIEW:

APPEAL: N DATA PROBLEM: N LANDSCAPE: N LESS THAN 50 YEARS: N
OTHER: N PDIL: N PERIOD: N PROGRAM UNAPPROVED: N
REQUEST: N SAMPLE: N SLR DRAFT: Y NATIONAL: N

COMMENT WAIVER: N

☒ ACCEPT ☐ RETURN ☐ REJECT 2/17/95 DATE

ABSTRACT/SUMMARY COMMENTS:

RECOM./CRITERIA Accept - A, C
REVIEWER Boland
DISCIPLINE Historia
DATE 2/17/95

DOCUMENTATION see attached comments Y/N see attached SLR Y(N)

CLASSIFICATION

___count ___resource type

STATE/FEDERAL AGENCY CERTIFICATION

FUNCTION

___historic ___current

DESCRIPTION

___architectural classification
___materials
___descriptive text

SIGNIFICANCE

Period Areas of Significance--Check and justify below

Specific dates Builder/Architect -
Statement of Significance (in one paragraph)

___summary paragraph
___completeness
___clarity
___applicable criteria
___justification of areas checked
___relating significance to the resource
___context
___relationship of integrity to significance
___justification of exception
___other

BIBLIOGRAPHY

GEOGRAPHICAL DATA

___acreage ___verbal boundary description
___UTMs ___boundary justification

ACCOMPANYING DOCUMENTATION/PRESENTATION

___sketch maps ___USGS maps ___photographs ___presentation

OTHER COMMENTS

Questions concerning this nomination may be directed to

Signed _____ Phone _____

Date _____



1 LEE SCHOOL

LAKE COUNTY, FL



N





2 WEE SCHOOL

WAKE COUNTY, FL



N





3 LEE SCHOOL

LAKE COUNTY, FL





4 LEE SCHOOL

LAKE County, FL



5

LEE SCHOOL

LAKE COUNTY, FL

N



N





6 LEE SCHOOL
LAKE COUNTY, FL

Kodalux
Processing Services

Kodalux
Processing Services



7 LEE SCHOOL

LAKE COUNTY, FL





8 LEE SCHOOL
WAKE COUNTY, FL





It was a time when fathers blushed
Lady Queen Be! Allude Lord Islington

ARMY BE ALL YOU CAN BE

LEC'S ALUMNI

9 LEE SCHOOL
LAKE COUNTY, FL

N





10 LEE SCHOOL

LAKE COUNTY, FL





11 LEE SCHOOL
LAKE COUNTY, FL





12 LEE SCHOOL

LAKE COUNTY, FL



N





13 LEE SCHOOL
LAKE COUNTY, FL

N



N





14 LEE SCHOOL
LAKE COUNTY, FL

Kodalux
Processing Services

N

Kodalux
Processing Services

N



15 LEE SCHOOL
LAKE COUNTY, FL



N



16 LEE SCHOOL

LAKE COUNTY, FL





17 LEE SCHOOL
LAKE COUNTY, FL



N





18 LEE SCHOOL
LAKE COUNTY, FL





19 LEE SCHOOL
LAKE COUNTY, FL





20 LEE SCHOOL

LAKE COUNTY, FL





21 LEE SCHOOL
LAKE COUNTY, FL



N





22 LEE SCHOOL
LAKE COUNTY, FL





EXIT

YOUR BEST ON SALE
NOW
PEACE

A-MAZE-ING
EVENTS!

23

LEE SCHOOL
LAKE COUNTY, FL



N

N



24 LEE SCHOOL
LAKE COUNTY, FL



N



N

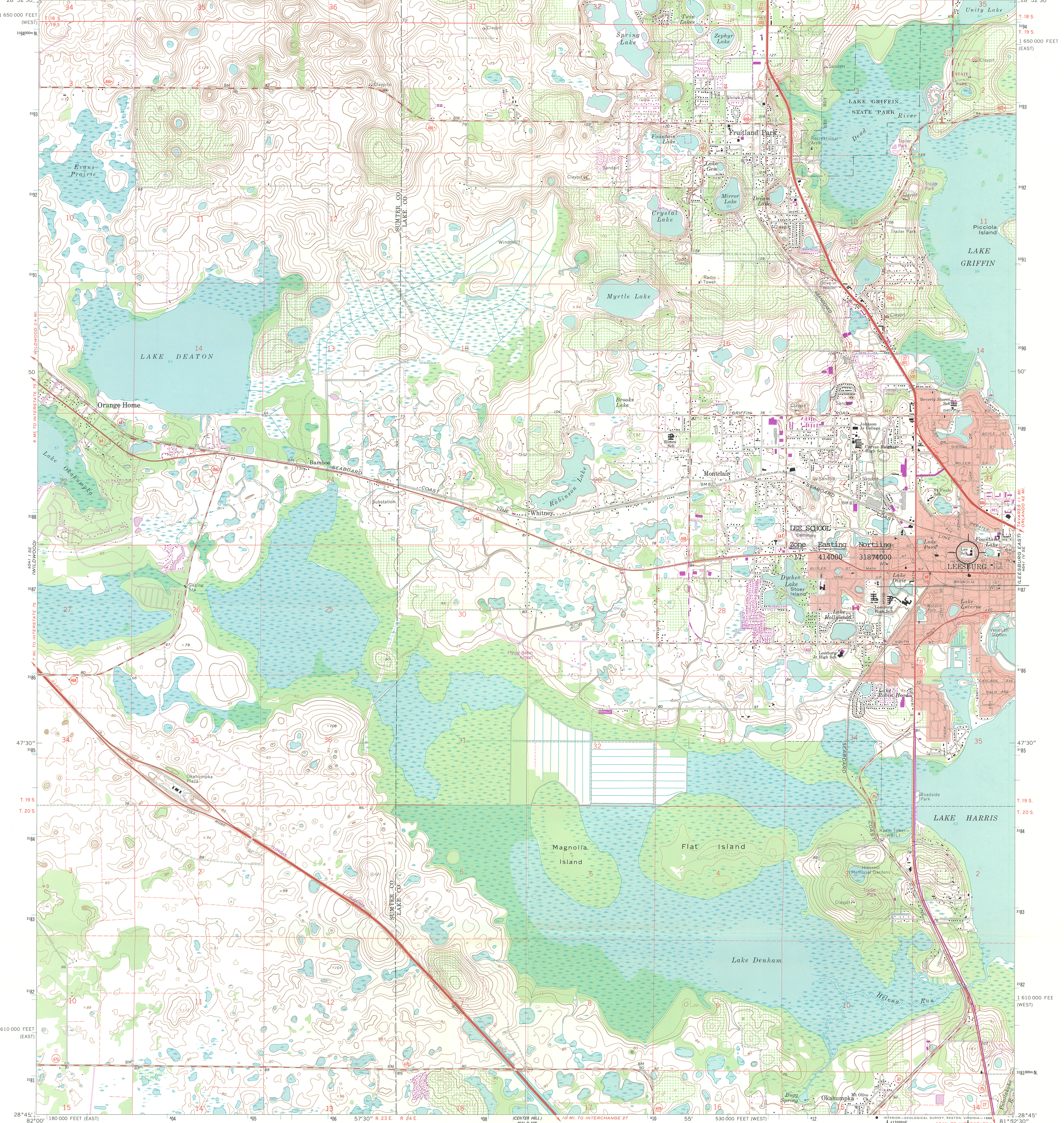


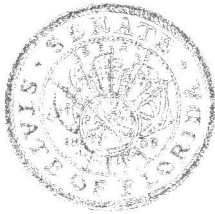
25 LEE SCHOOL
LAKE COUNTY, FL

N



N





THE FLORIDA SENATE

Tallahassee, Florida 32399-1100

SENATOR KAREN JOHNSON

11th District

Post Office Box 490557
Leesburg, Fl 34749-0557

COMMITTEES:

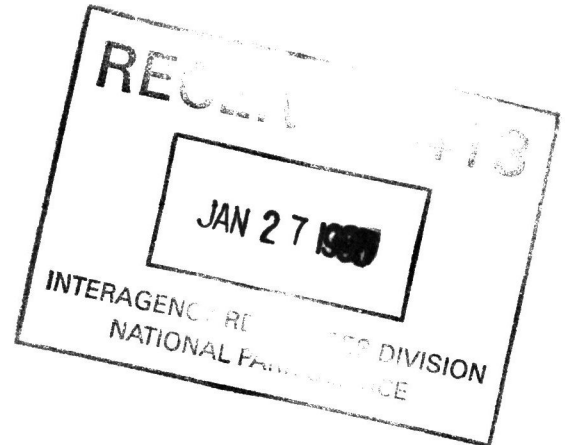
Education,
Vice Chairman
Criminal Justice
Executive Business, Ethics, and Elections

JOINT COMMITTEE:

Advisory Council on Intergovernmental Relations

Mr. Jerry Rogers
Keeper of National Register of
Historic Places
Department of Interior
Post Office Box 37127
Washington, D.C. 20013-7127

RE: Lee School
207 North Lee Street
Leesburg, Florida



Dear Mr. Rogers:

Please consider this letter as my support of the above referenced project in their effort to receive recognition as one of Lake County's oldest educational institutions - having been nominated for listing in the National Register of Historic Places.

As the State Senator representing all of Lake County it is indeed my pleasure to add my name to the list of supporters. Since my election in 1992 I have traveled extensively in Lake County. The residents have a deep respect, love and concern for historical places and Lee School is no exception -- it is rich in history and is certainly considered a significant visual and architectural landmark in Leesburg.

I will be happy to answer any questions you may have concerning this request and I do hope that a favorable decision will be forthcoming.

Sincerely,

Karen Johnson
State Senator - District 11

KJ/klm

REPLY TO:

- ☐ 3382 East Gulf To Lake Highway, Suite 18, Fountain Square, Inverness, Florida 34453 (904) 860-5191
- ☐ Post Office Box 490557, Leesburg, Florida 34749-0557 (904) 360-6670
- ☐ 254 Senate Office Building, Tallahassee, Florida 32399-1100 (904) 487-5014

JAMES A. SCOTT
President

MALCOLM E. BEARD
President Pro Tempore

JOE BROWN
Secretary

WAYNE W. TODD, JR.
Sergeant at Arms



CITY
OF
LEESBURG

The Complete City



June 13, 1994

Keeper, National Register of Historic Places
National Park Service
U. S. Department of the Interior
Washington, D.C. 20420

RE: National Register of Historic Places Nomination
Old Leesburg High School
207 N. Lee Street, Leesburg, Florida

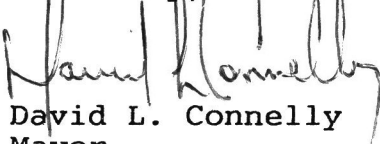
To Whom It May Concern:

This letter is to support and endorse the nomination of the Old Leesburg High School property for listing in the National Register of Historic Places. This property has been recommended for listing by the Florida National Register Review Board and will be formally submitted to your office in the near future.

The Old Leesburg High School is an important City landmark which has been used in various capacities over the last 79 years. This building has been retained in essentially its original condition and remains as a valuable example of Leesburg's history.

The Old Leesburg High School made a significant contribution in the development of the local community. Based on this fact, the City of Leesburg will appreciate your consideration of the nomination of this property to be placed on the National Register of Historic Places.

Sincerely,


David L. Connelly
Mayor

DC:JB:mo

cc: City Commission
Lake County School Board
Lake County Board of Commissioners

DATE FRI, JAN 13, 1995, 4:17 PM

Page: 6

NATIONAL REGISTER OF HISTORIC PLACES PROPERTY REPORT

REFERENCE No.: 95000024

Control No.: 950113/mmk

PROPERTY NAME: Lee School

OTHER NAME/ Lee Adult Education Center

SITE No. :

MULTIPLE NAME: NOT APPLICABLE

ADDRESS/ 207 N. Lee St.

BOUNDARY :

CITY: Leesburg

COUNTY: Lake

STATE: FLORIDA

Restricted Location Information: Owner: LOCAL Resource Type: BUILDING

	Contributing	Noncontributing
--	--------------	-----------------

Buildings	2	0
Sites	0	0
Structures	0	0
Objects	0	0

Nomination/Determination Type: SINGLE RESOURCE

Nominator: STATE GOVERNMENT

Nominator Name:
NOT APPLICABLE

Federal NOT APPLICABLE

Agency:

NPS Park Name: NOT APPLICABLE

Certification: DATE RECEIVED/PENDING NOMINATION

Date: 01/06/95

Other NOT APPLICABLE

Certification:

Historic EDUCATION
Functions:

Historic SCHOOL
Subfunctions:

Current EDUCATION
Functions:

Current SCHOOL
Subfunctions:

Level of LOCAL Applicable Criteria: EVENT
Significance: ARCHITECTURE/ENGINEERING

Significant Person's Name: NOT APPLICABLE

Criteria Considerations: NOT APPLICABLE

Area of Significance: EDUCATION

Periods of: 1900-1924 1925-1949 Circa: Specific Sig. Years:

Significance:

1915

1923

1926

Architect/Builder/Engineer/
Designer:

Cultural Affiliation:

NOT APPLICABLE

Carr, W. H.

Other Documentation:

NOT APPLICABLE

HABS No. N/A

HAER No. N/A

Architectural COLONIAL REVIVAL

Styles:

Describe Other Style: NOT APPLICABLE

Foundation Materials: CONCRETE

Wall Materials: BRICK

Roof Materials: ASPHALT

Other Materials: BRICK

Acreage: 2.0

UTM	Zone	Easting	Northing	Zone	Easting	Northing
-----	------	---------	----------	------	---------	----------

Coordinates:	17/	/4	14	000/	/31	87	400	/	/	/	/
--------------	-----	----	----	------	-----	----	-----	---	---	---	---