

1798

United States Department of the Interior
National Park Service

RECEIVED
OCT 3 0 1990

National Register of Historic Places Registration Form

NATIONAL
REGISTER

This form is for use in nominating or requesting determinations of eligibility for individual properties or districts. See instructions in *Guidelines for Completing National Register Forms* (National Register Bulletin 16). Complete each item by marking "x" in the appropriate box or by entering the requested information. If an item does not apply to the property being documented, enter "N/A" for "not applicable." For functions, styles, materials, and areas of significance, enter only the categories and subcategories listed in the instructions. For additional space use continuation sheets (Form 10-900a). Type all entries.

1. Name of Property

historic name Punta Gorda Ice Plant
other names/site number Kazwells Furniture Store/ 8CH00447

2. Location

street & number 408 Tamiami Trail not for publication
city, town Punta Gorda vicinity
state Florida code FL county Charlotte code FL 015 zip code 32399-0250

3. Classification

Ownership of Property <input checked="" type="checkbox"/> private <input type="checkbox"/> public-local <input type="checkbox"/> public-State <input type="checkbox"/> public-Federal	Category of Property <input checked="" type="checkbox"/> building(s) <input type="checkbox"/> district <input type="checkbox"/> site <input type="checkbox"/> structure <input type="checkbox"/> object	Number of Resources within Property	
		Contributing	Noncontributing
		<u>1</u>	<u>0</u> buildings
			<u>0</u> sites
			<u>0</u> structures
			<u>0</u> objects
		<u>1</u>	<u>0</u> Total

Name of related multiple property listing: Punta Gorda Multiple Property Group
Number of contributing resources previously listed in the National Register 0

4. State/Federal Agency Certification

As the designated authority under the National Historic Preservation Act of 1966, as amended, I hereby certify that this nomination request for determination of eligibility meets the documentation standards for registering properties in the National Register of Historic Places and meets the procedural and professional requirements set forth in 36 CFR Part 60. In my opinion, the property meets does not meet the National Register criteria. See continuation sheet.
Suzanne P. Walker (deputy) 10/17/90
Signature of certifying official State Historic Preservation Officer Date
Florida Dept. of State - Bureau of Historic Preservation
State or Federal agency and bureau

In my opinion, the property meets does not meet the National Register criteria. See continuation sheet.
Signature of commenting or other official _____ Date _____
State or Federal agency and bureau _____

5. National Park Service Certification

I, hereby, certify that this property is:
 entered in the National Register. Amy Federman 12/12/90
 See continuation sheet.
 determined eligible for the National Register. See continuation sheet.
 determined not eligible for the National Register.
 removed from the National Register.
 other, (explain:) _____
Signature of the Keeper Date of Action

6. Function or Use

Historic Functions (enter categories from instructions)

INDUSTRY/PROCESSING/EXTRACTION/
manufacturing facility

Current Functions (enter categories from instructions)

COMMERCE/TRADE/specialty store

7. Description

Architectural Classification

(enter categories from instructions)

OTHER/vernacular, masonry

Materials (enter categories from instructions)

foundation BRICK
walls BRICK
STUCCO
roof COMPOSITION
other

Describe present and historic physical appearance.

United States Department of the Interior
National Park Service

**National Register of Historic Places
Continuation Sheet**

Section number 7 Page 1 Punta Gorda Ice Plant

DESCRIPTION

SUMMARY

The Punta Gorda Ice House, located at 408 Tamiami Trail, in Punta Gorda, constructed in 1913 and 1926, contributes to the Punta Gorda Multiple Property Group under Associated Property Type, Buildings of Punta Gorda, 1884-1930. The one and two story structure is an excellent example of the subtype, Industrial Architecture.

Built in 1913 and expanded in 1926, the Ice Plant is a two story red brick commercial style building. The 1913 portion of the building is a gabled brick structure with massive insets. The building measures 41' by 41' with brick walls 21" thick with six inches of cork insulation. In addition, the floor space of the freezing tank area is 30' by 60'.

The 1926 addition, added by the second owner, the Florida Power and Light Company, features such stylistic details as curvilinear parapets and string course. The area previously utilized for boilers and generators was converted to a cold storage area as the plant was now powered by electricity. The original wood sash windows were removed.

ALTERATIONS

The one story cold storage facility has been altered with a mansard roof and glass storefront windows for adaptive use as a furniture showroom.

8. Statement of Significance

Certifying official has considered the significance of this property in relation to other properties:

nationally statewide locally

Applicable National Register Criteria A B C D

Criteria Considerations (Exceptions) A B C D E F G

Areas of Significance (enter categories from instructions)
COMMERCE

Period of Significance
1913-1930

Significant Dates
1913, 1926

Cultural Affiliation
N/A

Significant Person
N/A

Architect/Builder
unknown

State significance of property, and justify criteria, criteria considerations, and areas and periods of significance noted above.

United States Department of the Interior
National Park Service

National Register of Historic Places Continuation Sheet

Section number 8 Page 1 Punta Gorda Ice Plant

SIGNIFICANCE

SUMMARY

The Punta Gorda Ice Plant, located at 408 Tamiami Trail, is significant at the local level under Criterion A for its association with the fishing and railroad industries in Punta Gorda. The Ice Plant contributes to the Punta Gorda Multiple Property Group under Associated Historic Context: Exploration, Settlement and Early Development of Punta Gorda, 1884-1930, and Associated Property Type: Buildings of Punta Gorda, 1884-1930. The one and two story structure is an excellent example of the subtype, Industrial Architecture.

HISTORICAL SIGNIFICANCE

The original 1890s ice plant, located on this site, was powered by steam located in the northwest corner of the building. The freezing tanks were in the center of the building and the ice storage area and loading platforms were at the south end. The railroad spur that served the Punta Gorda Hotel also served the ice plant. By 1902, the plant was producing 25 tons of ice per day.

In 1903, the Desoto Manufacturing Company became owners of the ice plant. By 1909, the plant was running 24 hours a day to produce 20 tons of ice daily. Wood burning furnaces generated steam to produce power to run the equipment in the plant. Water was provided from an artesian well. The railroad tracks ran on both the east and west sides of the plant.

In 1913, the Desoto Manufacturing Company was bought out by the Southern Utilities Company. Extensive improvements were made to the plant including the construction of a new brick ice storage building. The storage building measured 41' by 41' with brick walls 21' thick with six inches of cork insulation. In addition, the floor space of the freezing tank area was enlarged by 30' by 60'. A new railroad line was extended from the plant to the fish houses on the Railroad Dock. An office was built on King Street to the southeast of the plant which was known at this time as the Punta Gorda Ice and Electric Company.

In 1926, the citizens voted by referendum to sell their electric power distribution to the Southern Utilities Company. Within a month, the Florida Power and Light Company acquired the

United States Department of the Interior
National Park Service

**National Register of Historic Places
Continuation Sheet**

Section number 8 Page 2 Punta Gorda Ice Plant

Southern Utilities Company and began to construct a new Punta Gorda plant. The power plant was located southeast of the ice plant, across the railroad tracks.

The ice plant was modified by Florida Power and Light Company as it no longer had to generate its own power. The original wood frame building and some of the 1913 additions were removed and replaced by a masonry building which was longer and narrower than its predecessor. The area previously occupied by the boilers and generators was converted into a cold storage area. The 1913 brick ice storage building was retained. Florida Power and Light continued to produce ice to serve the commercial fishing industry, as well as providing for the general use of Punta Gorda during the Boom period.

CONCLUSION

The Punta Gorda Ice Plant played a significant role in the success of both the fishing and railroad industries in Punta Gorda from 1913 to 1939. Without this facility, fish catches could not be kept fresh to be shipped to northern markets. The ice plant provided the ice that was so integral to the success of the fishing industry not only in Punta Gorda, but as far south as Fort Myers. It is also the only tangible link remaining in Punta Gorda directly related to the fishing industry. The long docks and warehouses were destroyed by fire in 1939.

9. Major Bibliographical References

PLEASE SEE COVER NOMINATION

Previous documentation on file (NPS):

- preliminary determination of individual listing (36 CFR 67) has been requested
- previously listed in the National Register
- previously determined eligible by the National Register
- designated a National Historic Landmark
- recorded by Historic American Buildings Survey # _____
- recorded by Historic American Engineering Record # _____

See continuation sheet

Primary location of additional data:

- State historic preservation office
- Other State agency
- Federal agency
- Local government
- University
- Other

Specify repository:

Bureau of Historic Preservation

10. Geographical Data

Acreeage of property Less than one Acre

UTM References

A

1	7	3	96	0	40	29	79	2	20
Zone		Easting				Northing			

C

Zone		Easting				Northing			

B

Zone		Easting				Northing			

D

Zone		Easting				Northing			

See continuation sheet

Verbal Boundary Description

Lot 5, Block 65, Plat of Punta Gorda, Township 41S Range 23E Section 6

See continuation sheet

Boundary Justification

The boundary follows the legal boundary historically associated with the property.

See continuation sheet

11. Form Prepared By

name/title Vicki L. Cole - Historic Sites Specialist Gladys Cook - Consultant
 organization Bureau of Historic Preservation date August 14, 1990
 street & number 500 South Bronough Street telephone (904) 487-2333
 city or town Tallahassee state Florida zip code 32399-0250

United States Department of the Interior
National Park Service

**National Register of Historic Places
Continuation Sheet**

Section number Photos Page 1 Punta Gorda Ice Plant

Punta Gorda Ice Plant

1. Punta Gorda Ice Plant
2. Punta Gorda, Florida
3. John McCarthy
4. 7-4-88
5. Historic Preservation Consultants, Inc.
6. Front elevation, camera facing northeast
7. #1

Items 1-5 are the same for all of the photographs.

6. Front elevation, camera facing north
7. #2

6. Rear elevation, camera facing southwest
7. #3

6. Side elevation, camera facing southeast
7. #4

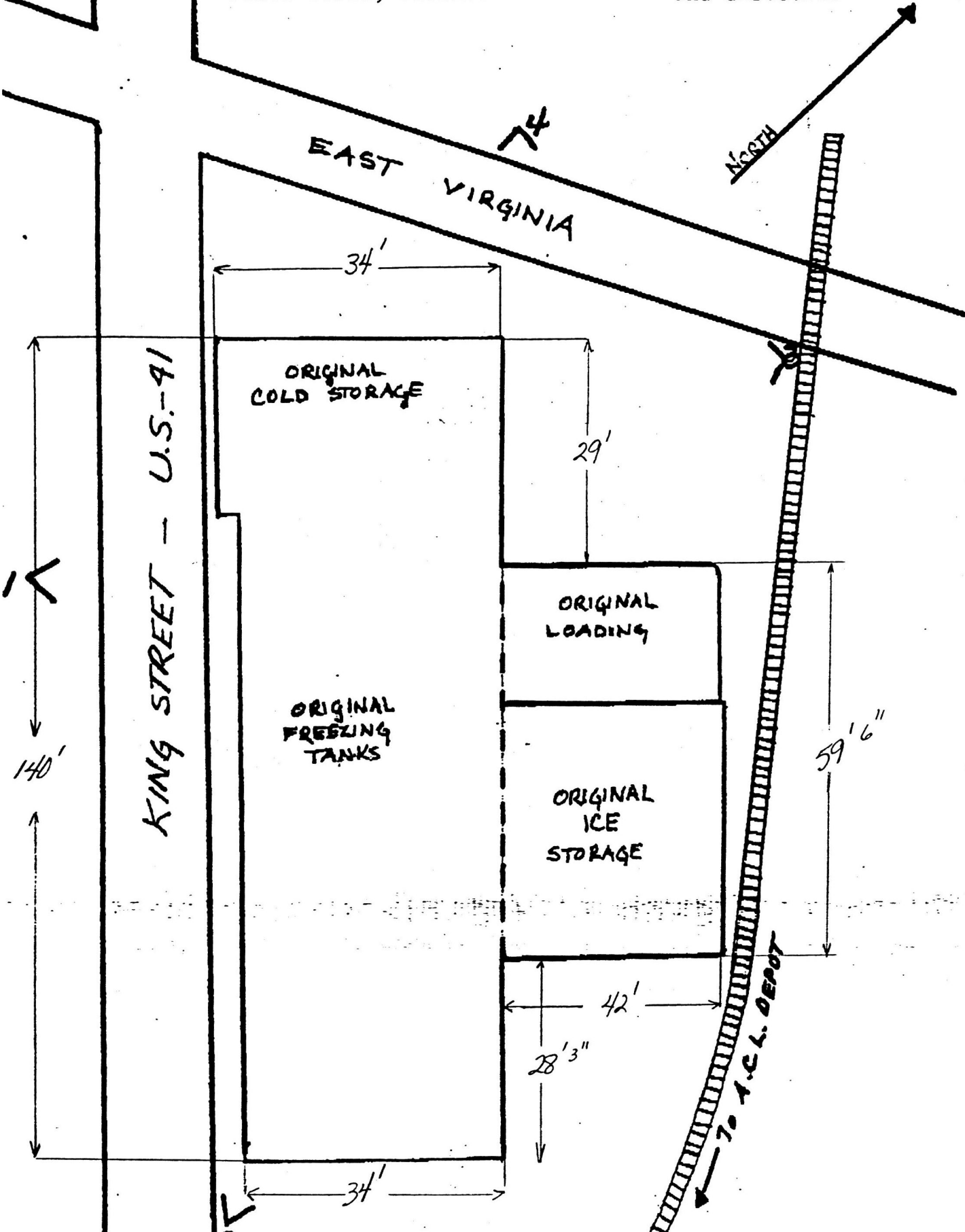
SITE PLAN

PUNTA GORDA ICE PLANT

408 Tamiami Trail

Punta Gorda, Florida

1< = photograph number and direction



United States Department of the Interior
National Park Service

National Register of Historic Places
Continuation Sheet

Section number _____ Page _____

Punta Gorda MPS Charlotte County, FLORIDA

		Date Listed
COVER	Substantive Review	<u>Amy Federman</u> 12/12/90
1. Charlotte High School		<u>Richard Jones</u> 12/12/90
2. Punta Gorda Atlantic Coast Line Depot	Substantive Review	<u>Amy Federman</u> 12/12/90
2. Punta Gorda Ice Plant		<u>12/12/90</u>
4. Punta Gorda Residential District	Substantive Review	<u>Amy Federman</u> 12/12/91
5. First National Bank of Punta Gorda, Old	Entered in the National Register	<u>3/14/91</u>
6. Punta Gorda Woman's Club		

UNITED STATES DEPARTMENT OF THE INTERIOR
NATIONAL PARK SERVICE

NATIONAL REGISTER OF HISTORIC PLACES
EVALUATION/RETURN SHEET

REQUESTED ACTION: NOMINATION

PROPERTY Punta Gorda Ice Plant
NAME:

MULTIPLE Punta Gorda MPS
NAME:

STATE & COUNTY: FLORIDA, Charlotte

DATE RECEIVED: 10/30/90 DATE OF PENDING LIST: 11/13/90
DATE OF 16TH DAY: 11/29/90 DATE OF 45TH DAY: 12/14/90
DATE OF WEEKLY LIST:

REFERENCE NUMBER: 90001798

NOMINATOR: STATE

REASONS FOR REVIEW:

APPEAL: N DATA PROBLEM: N LANDSCAPE: N LESS THAN 50 YEARS: N
OTHER: ~~N~~ PDIL: N PERIOD: N PROGRAM UNAPPROVED: N
REQUEST: N SAMPLE: N SLR DRAFT: N NATIONAL: N

COMMENT WAIVER: N

ACCEPT RETURN REJECT 12/12/90 DATE

ABSTRACT/SUMMARY COMMENTS:

RECOM./CRITERIA Accept
REVIEWER _____
DISCIPLINE _____
DATE _____

DOCUMENTATION see attached comments Y/N see attached SLR Y/N

CLASSIFICATION

count resource type

STATE/FEDERAL AGENCY CERTIFICATION

FUNCTION

historic current

DESCRIPTION

architectural classification
 materials
 descriptive text

SIGNIFICANCE

Period Areas of Significance--Check and justify below

Specific dates Builder/Architect
Statement of Significance (in one paragraph)

summary paragraph
 completeness
 clarity
 applicable criteria
 justification of areas checked
 relating significance to the resource
 context
 relationship of integrity to significance
 justification of exception
 other

BIBLIOGRAPHY

GEOGRAPHICAL DATA

acreage verbal boundary description
 UTM's boundary justification

ACCOMPANYING DOCUMENTATION/PRESENTATION

sketch maps USGS maps photographs presentation

OTHER COMMENTS

Questions concerning this nomination may be directed to

_____ Phone _____

Signed _____

Date _____



1. ICE PLANT, PUNTA GORDA, Florida

Charlotte C



2. ICE PLANT, PUNTA GORDA, Florida

Charlotte C



3. ICE PLANT, PUNTA GORDA, Florida

Charlotte ed



4. ICE PLANT, PUNTA GORDA, Florida

Charlatta C

Please refer to the map in the
Multiple Property Cover Sheet
for this property

Multiple Property Cover Sheet Reference Number: 64500122