

RECEIVED

JUN 23 1987

NATIONAL REGISTER

United States Department of the Interior
National Park Service

National Register of Historic Places
Registration Form

This form is for use in nominating or requesting determinations of eligibility for individual properties or districts. See instructions in *Guidelines for Completing National Register Forms* (National Register Bulletin 16). Complete each item by marking "x" in the appropriate box or by entering the requested information. If an item does not apply to the property being documented, enter "N/A" for "not applicable." For functions, styles, materials, and areas of significance, enter only the categories and subcategories listed in the instructions. For additional space use continuation sheets (Form 10-900a). Type all entries.

1. Name of Property

historic name Foggy Bottom Historic District

other names/site number N/A

2. Location

street & number Bounded by New Hampshire Avenue, 24th, 26th, H, and not for publication N/A

city, town Washington K Streets, N.W. vicinity N/A

state District of Columbia code DC county N/A code 001 zip code 20037

3. Classification

Ownership of Property

- private
- public-local
- public-State
- public-Federal

Category of Property

- building(s)
- district
- site
- structure
- object

Number of Resources within Property

Contributing	Noncontributing
135	91 buildings
	sites
	structures
	objects
135	91 Total

Name of related multiple property listing: N/A

Number of contributing resources previously listed in the National Register 0

4. State/Federal Agency Certification

As the designated authority under the National Historic Preservation Act of 1966, as amended, I hereby certify that this nomination request for determination of eligibility meets the documentation standards for registering properties in the National Register of Historic Places and meets the procedural and professional requirements set forth in 36 CFR Part 60. In my opinion, the property meets does not meet the National Register criteria. See continuation sheet.

see below

Signature of certifying official

Date

State or Federal agency and bureau

In my opinion, the property meets does not meet the National Register criteria. See continuation sheet.

Signature of commenting or other official
Carol B. Thompson

18 June 1987

Date

State Historic Preservation Officer

State or Federal agency and bureau

5. National Park Service Certification

I, hereby, certify that this property is:

- entered in the National Register. See continuation sheet.
- determined eligible for the National Register. See continuation sheet.
- determined not eligible for the National Register.
- removed from the National Register.
- other, (explain:)

Patrick Andrews

10/14/87

Signature of the Keeper

Date of Action

6. Function or Use

Historic Functions (enter categories from instructions)

Domestic/Single dwelling

Current Functions (enter categories from instructions)

Domestic/ Single dwelling

7. Description

Architectural Classification

(enter categories from instructions)

Materials (enter categories from instructions)

foundation Brickwalls Brickroof Metalother Stone lintels,Metal cornices

Late Victorian

Describe present and historic physical appearance.

The Foggy Bottom Historic District contains over 200 buildings on approximately three acres in the heart of the Capital. The district's boundaries are K Street on the north, New Hampshire Avenue on the southeast, 24th Street on the east and 26th Street on the west; they define a primarily residential area. Where portions of nineteenth century Foggy Bottom remain, the buildings reflect their origins in the working class residential community that existed at that time. Except for a single alley warehouse and a few structures built as corner stores, only rowhouses survive. They form a cohesive neighborhood of modest dwellings, built in a limited range of materials and styles. Primarily flat-fronted brick structures, the rowhouses are generally two, but occasionally three, stories in height. The modest styling and ornamentation reflects the limited circumstances of their nineteenth century occupants.

The buildings in the district date primarily from the late 1870's to the first decade of the twentieth century and they reflect the stages of the neighborhood's development. The earliest residences are individually constructed rowhouses that were built for their original owner. Notable among these is a group of four brick buildings along 25th Street and the adjacent frame house at the corner of 25th and Eye which may have been associated with the underground railroad. The brick buildings are distinguished by their flat facades and side entries.

The individual rowhouses were later joined by small groups of two or three attached houses, built by area residents on speculation. They are good examples of urban vernacular architecture, erected by successful members of the community. Several residences within the district were built by Peter McCartney, a carpenter whose craftsman's skill in handling unpretentious designs and materials is seen in his work at 2530-2532 Eye Street.

United States Department of the Interior
National Park Service

JUN 23 1987

National Register of Historic Places Continuation Sheet

Foggy Bottom Historic District, Washington, D.C.

Section number 7 Page 2

The long blocks of similar flat-fronted, two-story rowhouses, generally built after 1885, represent the culmination of the vernacular tradition in Foggy Bottom. They were built as speculative ventures by such firms as Dannenhower and Sons and B. H. Warner & Co. Within a relatively small area there are a dozen groups of such rowhouses, on both streets and alleys, built in blocks of four, six, or as many as sixteen units. Although some are attributed to Washington architects such as Albert Beers and Norman Grimm, they are generally simple and repetitive interpretations of a stock vocabulary of architectural forms.

Two groups of residences that were designed and built by the Burden family appear to reflect the strong ethnic character of the community at the turn of the century. These houses are characterized by European vernacular design elements such as bellcast roofs, lancet windows, Flemish gables, and peaked lintels. Their picturesque quality and medieval details strongly contrast with the sophisticated bay-fronted Victorian townhouses that were far more typical of the residences in Washington during this period.

As a whole, the district presents a low scale harmony of rhythmic rowhouses which are occasionally adorned with whimsical ornament. Many of the area's newer residences closely follow the established scale and fenestration patterns of the district's historic structures and compliment the design cohesion of the older buildings. A number of the newer apartment buildings continue the physical rhythm of the surrounding streetscape, if not the scale. Where contemporary large scale buildings do intrude, the rhythm of the street is compromised, but not broken. Despite the varying forms of architecture, the large number of rowhouses clearly dominate the ambience and character of the district.

The following are descriptions of key buildings within the Foggy Bottom Historic District. Organized by square, they are representative of the structures that contribute to the district.

Square 17

The oldest structure in Square 17 is the corner building at 2500 Eye Street. The house is one of only a handful of frame structures in the Foggy Bottom area. It is cubic in form with a flat roof. The original weatherboard has been concealed by aluminum siding.

United States Department of the Interior
National Park Service

JUN 23 1987

National Register of Historic Places Continuation Sheet

Foggy Bottom Historic District, Washington, D.C.

Section number 7 Page 3

The four buildings on 25th Street, numbers 822, 824, 826 and 828, are brick with a flat facade and a side entry. All are representative of the urban vernacular style buildings built in the district between 1874 and 1884, when single family homes in the city became affordable for the working class.

Number 822 is two stories high and three bays wide. Its wooden cornice is accentuated by four decorated brackets set between dentil work. This building is the most stylistically ambitious of the group, with its windows and door capped with brick lintels which reference the Second Empire style.

Number 824, which was built in 1878, is a brick building that has been stuccoed. The modest building is two bays wide and three stories high. All original ornamentation has been removed except for a row of modillions beneath the eaves.

Number 826 was constructed simultaneously with 824 and built by its original owner, Michael Clancey. It is a modest, plain building, devoid of any distinguishing decoration.

Number 828 was built in 1884 by John Scanlan, a prosperous local saloon keeper who was responsible for erecting several other houses in Foggy Bottom. This house is the smallest of the group, having only two stories and two bays. Its decoratively detailed brick cornice is typical of the district.

The residences on the 2500 block of Eye Street exhibit features typical of modest urban dwellings in the district. A series of nine closely abutting rowhouses of modest scale and decoration are flanked by larger houses at each end. These rowhouses, dating to 1911, are all similar in style and proportion and are sited to follow recessed lot lines.

Number 2506 Eye Street is a simple brick dwelling with a flat facade; it is distinguished by a decorated cornice and three brackets supporting corbelled eaves. Two bays wide and two stories high, plus a basement, its entrance has been raised to allow access on the main level. The structure is compatible both in scale and proportion with its neighbors at 2508 and 2504 Eye Street.

United States Department of the Interior
National Park Service

JUN 23 1987

National Register of Historic Places
Continuation Sheet

Foggy Bottom Historic District, Washington, D.C.

Section number 7 Page 4

Peter McCartney, Foggy Bottom's best known builder, designed and constructed the house at 2508 Eye Street for Thomas Cahill in 1887. It is a simple, freestanding building two stories high and two bays wide with a flat facade. McCartney's skill with brick and wood is evident in the restrained, corbelled brick cornice and delicate jigsaw work above the windows as well as in the delicate attenuated columns that flank the entry.

Numbers 2506 and 2508 form the east flank of a row of modest two-story houses. The first group in the row, 2512-2518 Eye Street, was developed by owner/builder Harry Kite to the design of architect A. H. Beers. They are modest brick structures, two stories high and two bays wide, with a flat facade. Their wider proportions and their simplicity of design identify them as dating from the first years of the twentieth century. They were speculative buildings erected for the working class market of Foggy Bottom. 2414-18 have non-original ornamented doors and a bay window has been added to the front of 2516.

A second group of speculative houses, 2520-2528 Eye Street, is composed of five rowhouses designed by Washington architect Norman Grimm. They are one meter wider than a similar row to the east and are also slightly more ornate. The additional width allows for two windows and a door on the first floor and two windows on the upper story. The bracketed cornice, two string cornices, and plain stone lintels are details which create a distinctive facade.

The streetscape is completed by the two attached houses at 2530-2532 Eye Street, designed and constructed by Peter McCartney. Two stories high and two bays wide, they achieve an imposing appearance with their intricate brick cornice work. There is an unusual ground level arched opening in the connecting party wall that provides access to rear yards; McCartney's skill with brick is seen in the arch and cornice.

Square 16

The six buildings at 900-910 25th Street illustrate the use of decorative brickwork to add visual interest to modestly-scaled buildings. The brick cornice has a distinctive corbel motif at its eaves; the same motif is used to accentuate the segmental arched windows. These small houses are two stories high and two bays wide, with alternating entry position.

JUN 23 1987

**United States Department of the Interior
National Park Service**

**National Register of Historic Places
Continuation Sheet**

Foggy Bottom Historic District, Washington, D.C.

Section number 7 Page 5

The dwellings at 2503-05-07 Eye Street form a unique group within the district. Designed in 1892 by Thomas Francis, Jr. for T. B. Harrison, they boast large projecting square bays. These buildings present a forthright appearance with their massive bays and strong vertically set brick cornices. The original windows have been replaced.

The row of dwellings along 25th Street is typical of the district. Numbers 912, 912½, 914, and 914½ are distinguished by the varied placement of entrance doors. All four buildings are two stories high and three bays wide. Designed in 1887 as a speculative project by B. H. Warner and Company, they were originally used as single family residences. Number 912 is particularly notable because it retains the original door location and has fine proportions. An intricate stepped brick cornice crowns the group and segmental arches over the windows are accentuated by pressed brick detailing.

Number 2534 K Street was designed and constructed in 1889 by local master builder Peter McCartney. It is a three-story brick building that was originally intended for use as both a store and a residence. It was built for Peter McIntyre who operated his grocery store there until the first decade of the twentieth century and also used it as his home. McCartney, a carpenter by trade, practiced extensively in Foggy Bottom both as a designer and a builder. His work with brick exhibits a masterful control of vernacular building techniques, demonstrated by both the skill and the originality that he brought to his projects. The building is situated on an angular corner lot and features strong massing. Decoration is limited to simply detailed pressed and molded brick. String coursing, an ornate corbelled cornice of brick, and limestone segmental arched lintels in a beaded design are used across the three elevations of this freestanding building. A three-story square bay which is crowned by an arched pediment that emphasizes its corner position provides visual relief from the repetitive rowhouse streetscape.

Numbers 949-955 26th Street are larger rowhouses which retain their original simple appearance. Built in 1892, two stories high on a raised basement, the buildings are three bays wide. Their ornamentation is restricted to the brickwork used for the high cornice and as an accent on the segmental arches.

United States Department of the Interior
National Park Service

National Register of Historic Places Continuation Sheet

Foggy Bottom Historic District, Washington, D.C.

Section number 7 Page 6

Number 947 26th Street is a McCartney building with a full scale octagonal bay. Very similar in ornamentation to the adjacent buildings at 949-955 built in 1892, it was constructed in 1886 and appears to have served as the model for its neighbors.

The residence at 901-907 26th Street represents both the new and the old Foggy Bottom. It is composed of two brick buildings that were renovated for residential use in the late 1970's to the design of the Washington architectural firm of Swaney Kerns. While only the front brick wall of one building and the facades of the other remain, the original scale, material, and fenestration has been maintained. The design is innovative, responding to the neighborhood's basic design elements. Iron work by the well-known craftsman Albert Paley in abstract and stylized motifs adorns the building and a large gate at the entry area on 26th Street.

Square 28

The structures at 2421-2427 Eye Street exhibit the picturesque quality of Foggy Bottom's small scale rowhouses. These four buildings were constructed in 1889 by Joseph Burden to the designs of B. Burden. They offer simple interpretations of the English vernacular designs that gained popularity with the emergence of the English Arts and Crafts style. This early use is unusual and indicates a level of stylistic awareness that was not typical of Foggy Bottom. Two stories high and two bays wide, two of the houses feature a variation of a bellcast roof, another is parapeted, and the fourth has a front gable. The recessed entries and individually proportioned fenestration add to the charming character of this row.

Numbers 2407, 2409, and 2411 Eye Street were designed in 1909 by A. H. Beers for builder Simon Oppenheimer. The structures are two stories high and three bays wide and are constructed of brick set in Flemish bond. They are simple, flat-fronted buildings that display careful attention to proportion. Wide rusticated lintels accent the windows and corbelled brick decorates the cornice.

In 1881, Peter McCartney worked on the building at 2431 Eye Street in Square 28, which was being constructed for John Casey. Two bays wide, it features a one-story polygonal bay. The cornice is a deeply set, triangulated corbel that is very similar to the cornice on the residence at 828 26th Street, built in 1884 by Joseph Scanlan.

JUN 23 1987

**United States Department of the Interior
National Park Service**

**National Register of Historic Places
Continuation Sheet**

Foggy Bottom Historic District, Washington, D.C.

Section number 7 Page 7

Square 29

Square 29, one of the more intact squares in Foggy Bottom, illustrates the charming character attained in the district by buildings of modest price and scale. Here, the juxtaposition of buildings with flat facades next to those featuring refined articulation creates a successful visual interplay. This picturesque square illustrates the ethnicity of Foggy Bottom and establishes a very intimate street scale.

The first large group of buildings to be built in the historic district, at 828-38, 842-44 New Hampshire and 2400-2416 Eye Street, were designed and built in 1886 by James H. Grant for speculator Samuel Norments. With the exception of 842-44 New Hampshire, these buildings are stylistically similar. Two bays wide and two stories high, they feature a decorated cornice and segmental arches with beaded moldings over the openings. They are simple buildings, but pleasant in scale and proportion. Situated in two groups, one facing Eye Street and the other New Hampshire Avenue, they are joined at the corner by a large building which was originally a store and a dwelling. Using the same motifs seen in the adjacent rowhouses, this building presents a grander image through its massing. A central door flanked by large bays gives it the appearance of a substantial residence.

Numbers 2426-2438 Eye Street are distinct from the rest of the buildings on the square and from each other. Number 2426 boasts a brownstone facade and an elegantly curved bay, while number 2428 has been covered with clapboard and features a bold cornice and lintels.

Using a flat facade, 812-818 New Hampshire Avenue illustrates a pleasing, commonplace approach to the urban dwelling. Each building is two bays wide, the first floor accented by a double window. Segmented arches support the openings and are highlighted by beading in pressed brick.

The sixteen brick rowhouses at 801-821 25th Street and 800-810 New Hampshire Avenue are well proportioned and exhibit a variety of designs. Constructed in 1890 as a single group, two basic designs are skillfully articulated to create a rich streetscape. Designed by Charles Burden, they clearly show a stylistic relationship to the buildings

JUN 23 1987

**United States Department of the Interior
National Park Service**

**National Register of Historic Places
Continuation Sheet**

Foggy Bottom Historic District, Washington, D.C.

Section number 7 Page 8

constructed by the Burdens at 2421-27 Eye Street in 1889. A variety of materials (red brick facades, brick and iron cornices, roofs of slate and tin) are used to create a picturesque ensemble of buildings. Their references to European vernacular architecture place them in a distinct category of Foggy Bottom buildings. Both their composition and their design are evidence of the architect's talent and academic leanings. Simple flat-fronted buildings at each end of the group give it closure and provide a transition to adjacent buildings.

The adjacent structures at 815-821 25th Street possess a style typical of Foggy Bottom. With flat facades and flat roofs, their simple two bay wide and two-story high composition is relieved by brick arches and cornices. The cornice extends the length of the four buildings and its corbelling is broken only between 817 and 819, where the grade requires it.

Numbers 801-813 have a very different appearance from the preceding group. Designed as a unit, these six buildings are defined by sloping roofs set between stylized Flemish gables. Peaked lintels, dormer windows and a pleasing scale give these houses a European charm. The building at 801 25th Street dominates the corner with its two-story turreted tower. A sloping slate roof accentuates the building's mass.

Beginning with the design of 800 New Hampshire, this row is stylistically the most unusual in Foggy Bottom, with a vernacular interpretation of forms common to medieval Europe. Number 800 New Hampshire employs a sophisticated use of massing to turn an obtuse corner angle. By intersecting two flat planes and varying the roof and fenestration, the building takes on an unusual character while connecting the rows on both streets.

Number 802 is distinguished by a first story with pointed arch windows and door. Its second story features a simple rectangular window with peaked lintels. The cornice is articulated in projecting vertical rows of brick. At number 804, an exaggerated pitched roof is punctured by two gabled dormer windows decorated with half timber. A recessed doorway and peaked lintels complete the facade.

JUN 23 1987

**United States Department of the Interior
National Park Service****National Register of Historic Places
Continuation Sheet**

Foggy Bottom Historic District, Washington, D.C.

Section number 7 Page 9

A corbelled gable, complete with a pseudo-chimney set into the mansard roof, gives 806 a unique appearance. The fenestration contributes to the picturesque design, with a diminutive window set between the door and a more typical-size window on the first floor. Two narrow windows, placed closely together, define the second story. The fishscale tile of the roof completes the design.

On number 808 the mansard roof projects over the first story and, like 804, is punctured by two gabled dormer windows. A fir tree motif, routed in half timber, decorates these gables. The first story is like that of 804 in organization and detailing. Keeping with the massing of 802, this building completes the group.

The final structure, 810, is a tiny rowhouse ornamented with a romantic castle motif. The flat facade is broadened at the second story by an oriel window and the window cornice is crenellated. The first floor has an arch over the windows and door. This shape is accented by molding in a contrasting color. The cross motif created in recessed brick completes the medieval castle theme.

ALLEY DWELLINGS

The significance of Foggy Bottom's vernacular architecture is further enhanced by the nineteenth century alley dwellings that are located in Snow's Court and Hughes Mews. An alley dwelling is one which faces onto the alley, as distinguished from the sheds and stables which often face toward houses. Historically, alley buildings had some architectural diversity, but most followed the same plan. The standard dimensions for alley dwellings were 12' x 30', with a rear yard 10' x 15'. Most were two stories high and had two to four rooms. The upstairs contained the bedrooms, while downstairs, depending on the needs of the occupants, there was additional sleeping or living space. The kitchen, also downstairs, served as the center of household activity. Some of the later brick alley dwellings had basements, but they were uncommon. Other standard features included rain barrels and water hydrants for catching water; stoves or fireplaces; and outhouses.

In his fine study, Alley Life in Washington, James Borchert divides alley houses into four categories which illustrate the evolution of alley construction. The first category, as mentioned above, consisted of small

JUN 23 1987

**United States Department of the Interior
National Park Service**

**National Register of Historic Places
Continuation Sheet**

Foggy Bottom Historic District, Washington, D.C.

Section number 7 Page 10

shanties and sheds erected in the 1850's, most of which have long since been removed. Following the Civil War more permanent structures began to appear. These "second category" buildings were erected by property owners and, along with existing sheds, rented out to migrants. They usually had fireplaces and chimneys, but little else.

The third category, the frame houses of the 1870's and 1880's, were built in large numbers in response to the local housing shortage. These wooden rowhouses were sturdy, with fireplaces and gutters. Though very simple, some had shutters and decorated cornice lines. Many had small steps and porches and several windows.

The fourth category, the brick dwellings of the 1880's, are those which survive in the district today; they were probably built by established contractors. Approximately the same size as the frame dwellings, these well built houses were set on low brick bases and were slightly raised. They had flat tin roofs and more ornamentation. Although the bricks were usually laid in common bond, their decorative facades rivalled those of the street houses. The finer versions of these houses attracted more affluent tenants as well.

Snow's Court, one of Washington's most famous inhabited alleys, is within Square 28. The alley dwellings here date from the early 1880's and are simple brick structures. They are two stories high on raised basements. Each unit is two bays wide. The only original ornaments are corbelled cornices and the segmental arched windows.

The brick alley dwellings in Hughes Mews are two stories high and two bays wide; only portions of the original rows survive. They feature brick corbelled cornices which are more intricate than those on many similar buildings in the district.

In conclusion, the brick rowhouses in the Foggy Bottom Historic District are artifacts of a different era in Washington. Their owners and residents were rarely people of means, but they developed an architecture with ornament and charm. The small scale of their buildings and their limited resources challenged their architectural skills. The clever manipulation of brick to create a range of decoration, their effective use of good proportion, and their recognition of the value of well-placed ornament produced a cohesive built environment. Each building, modest though it may be, survives as an important element in this neighborhood and stands as evidence of the working class residents who created it.

United States Department of the Interior
National Park Service

National Register of Historic Places Continuation Sheet

FOGGY BOTTOM HISTORIC DISTRICT
Washington, D.C.

Section number 7 Page 11

NONCONTRIBUTING BUILDINGS IN THE HISTORIC DISTRICT

The number of noncontributing buildings in the district is 91, they are identified on continuation sheets 3 and 4 of the "Maps" section.

Noncontributing buildings are those which do not date from the district's period of significance (1870-1911) or which have been so substantially altered that they have lost their original architectural character. Most of the noncontributing buildings fall into the first category. Within this category, there are substantial differences in the degree of incompatibility exhibited.

There are those (relatively few in number) which are clearly incompatible because of their scale and design (photograph #16). The larger, out-of-scale buildings that comprise a segment of noncontributing resources are from the post World War II era. They intrude on the district with styles, materials and massing unlike the historic core, but are small in number. Others (by far the more numerous) are compatible in scale and materials (the new rowhouses on Queen Anne's Lane, photograph #15, for instance) but are distinguished from the district's historic structures. Most of the noncontributing buildings in the Historic District fall within the latter category, and, therefore, they contribute to the strong "sense of place" that is evident in the district.

Numbers 2531 and 2529 Eye Street, N.W. (Square 16) are recent buildings which are more compatible in scale and materials, but not in design. The older structures at 913 and 915 26th Street, N.W. (Square 16) have been substantially altered and are, therefore, listed as noncontributing.

United States Department of the Interior
National Park Service

**National Register of Historic Places
Continuation Sheet**

Foggy Bottom Historic District, Washington, D.C.

Section number 7 Page 12

INTEGRITY OF THE DISTRICT

The Historic District contains 226 buildings, 91 of which are noncontributing. Despite the sizeable proportion of noncontributing buildings, the Historic District retains a significant core of historic and contributing buildings. Furthermore, many of the district's noncontributing buildings are partially compatible, for either their scale, materials, or overall appearance. They help to create a sense of visual coherence which belies the large number of noncontributing buildings.

Foggy Bottom remains an unusual element in present-day Washington. The late 19th century working-class neighborhood is still clearly discernable from the immediate surroundings which have changed from single-family residential to institutional, multi-family, and business purposes. Foggy Bottom serves as a visual reminder of Washington's little-known industrial heritage.

As the Statement of Significance concludes, the Foggy Bottom Historic District:

"possesses sufficient integrity of location, design, setting, materials . . . to convey the values for which it is judged significant."

8. Statement of Significance

Certifying official has considered the significance of this property in relation to other properties:

nationally statewide locally

Applicable National Register Criteria A B C D

Criteria Considerations (Exceptions) A B C D E F G

Areas of Significance (enter categories from instructions)

Architecture
Ethnic Heritage/ European

Period of Significance
1870-1911

Significant Dates
N/A

Cultural Affiliation N/A

Significant Person N/A

Architect/Builder

Grimm, Norman
McCartney, Peter
Beers, A.H.

State significance of property, and justify criteria, criteria considerations, and areas and periods of significance noted above.

The District of Columbia Historic Preservation Review Board has recommended that the Foggy Bottom Historic District be nominated to the National Register of Historic Places. The district meets Criterion C and is significant because it:

- 1) is a distinguishable residential neighborhood whose growth illustrates an important aspect of the social history and economic development of the Nation's Capital from the mid-nineteenth century until World War I;
- 2) retains representative examples of each period of its development, including a variety of vernacular row housing types characteristic of Washington's working class neighborhoods;
- 3) possesses sufficient integrity of location, design, setting, materials, workmanship, feeling, and association to convey the values for which it is judged significant.

The Foggy Bottom Historic District is a primarily residential district comprised of four squares within the larger Foggy Bottom neighborhood. The district was developed in the last quarter of the nineteenth century and the early years of the twentieth century. The predominant building type is the rowhouse, extant from the years when this area housed the immigrant labor that worked in nearby industries. In addition to the primary sources (which include census records and city directories), two important secondary sources shed light on the history of Foggy Bottom. They are Suzanne Sherwood's Foggy Bottom 1800-1975 and Elmer Kayser's history of George Washington University, Bricks Without Straw.

See continuation sheet

9. Major Bibliographical References

Borchert, James. Alley Life in Washington: Family, Community, Religion, and Folklife in the City, 1850-1970. Chicago: University of Illinois Press, 1980.

Bryan, Wilhemus Bogart. A History of the Nation's Capital. New York: Macmillan Company, 1916.

See continuation sheet

Previous documentation on file (NPS): N/A

preliminary determination of individual listing (36 CFR 67) has been requested

previously listed in the National Register

previously determined eligible by the National Register

designated a National Historic Landmark

recorded by Historic American Buildings

Survey # _____

recorded by Historic American Engineering

Record # _____

Primary location of additional data:

State historic preservation office

Other State agency

Federal agency

Local government

University

Other

Specify repository:

District of Columbia Office of

Historic Preservation

10. Geographical Data

Acreage of property Approximately 3 acres

UTM References

A	1 8	3 2 1 8 0 0	4 3 0 7 7 5 0
	Zone	Easting	Northing
C	1 8	3 2 2 0 5 0	4 3 0 7 3 0 0

B	1 8	3 2 2 0 5 0	4 3 0 7 7 5 0
	Zone	Easting	Northing
D	1 8	3 2 1 8 0 0	4 3 0 7 3 0 0

See continuation sheet

Verbal Boundary Description

Beginning at the intersection of K and 25th Streets, proceed east along the centerline of K Street, turning south along the eastern edge of lot 19 to the northern edge of the alley; proceed eastward and southward along the

See continuation sheet

Boundary Justification

North Boundary: The northern boundary of the historic district is the centerline of K Street, N.W. This wide avenue forms a strong and distinct boundary separating part of the historic district from the area to the north.

See continuation sheet

11. Form Prepared By

name/title Lois Snyderman, Executive Director

organization Advisory Neighborhood Commission 2A

street & number 1920 G Street, N.W.

city or town Washington,

date 21 May 1987

telephone (202)659-0011

state D.C.

zip code 20006

JUN 23 1987

United States Department of the Interior
National Park ServiceNational Register of Historic Places
Continuation Sheet

Foggy Bottom Historic District, Washington, D.C.

Section number 8 Page 2

The area popularly called Foggy Bottom is generally considered to fall between 17th Street on the east, Georgetown on the west, the Potomac River on the south, and Pennsylvania Avenue on the north. Historically, this area was divided into two sections, with 23rd Street separating an upper-income neighborhood to the east from the working class/industrial neighborhood to the west. According to Elmer Kayser, historian of George Washington University, writing in *Bricks Without Straw*, "The name was never an official one, indicating fixed metes and bounds. For decades it was one of those popular terms of denigration which traditionally fix themselves to an area, like Swampoodle, Frog Island, Herring Hill. . . Its great landmarks were two breweries, a large coal yard, extensive stables, the gas works, and a famous saloon. Time works a strange legerdemain. The development of a parkway along the Potomac, the contemporary craze for restoration of old dwellings, and the construction of great memorials, monumental government structures, high-rise office buildings, and luxurious apartments have given Foggy Bottom a distinct eclat and its name a place in the literature of politics, society and the arts." (p. 216-17)

Specifically, this district is significant for: 1) its association with Washington's early working class; 2) its geographic and sociological relationship with one of Washington's early industrial areas; 3) the fact that it remains one of the few neighborhoods associated with European immigrants in a city noted for its relative absence of European-American communities; and 4) the value of its architecture as a guide to the lives of its residents.

1. Association with Washington's Early Working Class: Those responsible for building the district's houses included well-known architects such as A.H. Beers and Norman Grimm and prominent developers such as Harry Kite and James Grant. But the men and women who gave Foggy Bottom its distinctive character were the carpenters, the bricklayers, the builders, and the nineteenth and early twentieth century residents who helped shape Foggy Bottom with their dreams for a better life in America. They were men like Peter McCartney, an Irish immigrant who began as a carpenter and soon established his own successful contracting business. McCartney's name is associated with more buildings in Foggy Bottom than any other person. It is people like Pleasant Hough, a widow who built her own home, a modest house, but one that reflected her economic self-sufficiency. Or James Scanlan, another Irish immigrant, who rose from a job as bartender to the ownership of his own saloon, and who went on to build houses in Foggy Bottom. The people who lived in Foggy Bottom, whether in rowhouses along the main streets or in alley dwellings, spent most of their lives here, developing a "sleepy backwater" into the neighborhood that survives today.

JUN 23 1997

United States Department of the Interior
National Park Service

National Register of Historic Places
Continuation Sheet

Foggy Bottom Historic District, Washington, D.C.

Section number 8 Page 3

2. The Geographic and Sociological Relationship With One of Washington's Early Industrial Areas: This neighborhood housed the workers from such nearby industries as Godey's lime kilns, the Washington Gas and Light Company, the glass works, the Abner/Drury and the Christian Heurich breweries, and Cranford's Paving Company. The growth of industrial activity in the area and an expanding ethnic population kept Foggy Bottom from sharing in the benefits of Governor Alexander ("Boss") Shepherd's late nineteenth century public works program, which was directed primarily within Northwest Washington. As improved public transportation encouraged those who could afford it to move from the sleepy backwater that was Foggy Bottom, the population of the area came to consist primarily of the poor immigrants who lived close to their work. These people, mostly of German and Irish extraction, formed cohesive communities within Foggy Bottom. The Germans generally worked in the breweries, while the Irish tended to work for the Washington Gas and Light Company.

Hired as laborers, they worked long and hard under unpleasant conditions that were made worse by the soot, steam and odor of the industries in the area. Foggy Bottom was described by historian Kayser in the following words: "In the old days, there had been an appropriateness to the name, though Foggy Bottom has no official place in geographical nomenclature. It was bottom land and much of its lower fringe was swampy. The fogs which settled over the river bank were amplified by the smog from the gas works which emitted dirt-laden and malodorous clouds of smoke, day and night, touched up with violent spurts of flame that lit up the vicinity with an eerie glow." (Bricks Without Straw, p. 217).

Foggy Bottom was home to some of the very poorest residents of the city, but it was also a place where, for many, the modest dream of owning a simple home was realized. The very unpleasantness which left Foggy Bottom a forgotten corner of the city enabled it to become a source of opportunity for its working class immigrant residents. The area's poor environment and its lack of popularity kept land values low and made home ownership a possibility for them.

3. A Rare Example of a Washington Ethnic Neighborhood: Historically, Washington was not a city with a multiplicity of strong ethnic communities. Many reasons have been put forward for this phenomenon. The most likely is that the absence of an underlying industrial economy altered the more typical

JUN 23 1987

United States Department of the Interior
National Park ServiceNational Register of Historic Places
Continuation Sheet

Foggy Bottom Historic District, Washington, D.C.

Section number 8 Page 4

patterns of sociological development found in other American cities. Foggy Bottom's proximity to Washington's small industrial area provides the basis for its ethnic associations. The residents of the area maintained strong internal ties and formed separate religious and social institutions, many of which still exist today. The Irish community had both a baseball team and a football team, the former called the Emerald A.C. and the latter the Irish Eleven, and the West End Hibernian Society had been established by the 1880's. Susan Sherwood, in her study, Foggy Bottom 1800-1975, relates a conversation with an older resident who remembered that "the neighborhood was entirely German and Irish and the Germans only traded with the Germans and the Irish with the Irish." (Foggy Bottom, p.12)

4. The Architecture as Representative of the Lifestyle of the Residents: The buildings that comprise this historic district are the legacy of the German and Irish communities that coexisted in Foggy Bottom for many years. The extant residential architecture illustrates the physical development of a working class community in its architectural vocabulary, its craftsmanship, and its building types. The houses, which are modest in scale and size, form a pleasing neighborhood of varied types, forms, and styles. Such urban vernacular housing represents the ethnic background, traditions, and skills of its residents. The area's developers, builders and architects were often successful members of the community, responding to their neighbors' housing needs through their work.

The houses were primarily constructed in the period from the late 1870's through the 1910's. The extant buildings represent stages of the area's development that correspond to the changing economic situation in Foggy Bottom. From individually constructed houses built for their owners, to two or three attached houses built by speculators, to low cost rowhouses erected by professional developers to meet housing demands, this area maintained a cohesiveness of scale and building type. The neighborhood retained an ethnic base as buildings were erected to suit the needs of its residents and their ability to pay.

The alley dwellings of the District of Columbia were a form of workers' housing prevalent throughout the city. Unique to Washington, these substandard dwellings were a major source of housing from the late 19th century to the 1930's. James Borchert's in-depth study, Alley Life in Washington, presents substantial evidence that these alleys were pockets of rural folk culture within the heart of the city. As such, a rich subculture developed with significant historical and sociological implications.

JUN 23 1987

**United States Department of the Interior
National Park Service**

**National Register of Historic Places
Continuation Sheet**

Foggy Bottom Historic District, Washington, D.C.

Section number 8 Page 5

The emergence of alleys as dwelling areas was due to the urban housing shortage in the middle of the nineteenth century. The first documented alley structures in Washington date back to approximately 1850. This initial phase of alley building consisted primarily of flimsy shanties and sheds, offering the barest protection. The great influx of ex-slaves, soldiers and vagrants following the Civil War further exacerbated the housing problem and provided a strong stimulus for alley development. In the period from 1870-1892, substantial frame and brick rowhouses began to appear in large numbers and close-knit alley communities comprised of unskilled workers and vagrants came into being.

Within the bounds of the historic district are two such alleys: Snow's Court (Square 28) and Hughes Mews (Square 16). Little is known of Hughes Mews. Snow's Court, one of the first alleys in Washington, was named for C.A. Snow, publisher of the National Intelligencer. Snow, who owned property on Square 28, built a greenhouse and four frame dwellings during the 1850's in the square's interior. The frame dwellings were among the first of their kind to appear in an alley and served as forerunners for the frame rowhouses of the 1870s. During the Civil War, Snow's houses were used as army barracks; following the war, Snow's alley developed at the same rapid rate as other alleys. A 1938 study indicated a very high rate of resident stability, with more than half having lived in the alley for over five years.

In 1892, a prohibition on the construction of alley dwellings checked their growth. The concern with the sociological and health-related problems posed by the alley dwellings led to a wave of demolitions during the first two decades of the 20th century. A second wave of demolitions occurred in the 1930's and 1940's. The movement to remove these "mini-ghettos" from the more affluent neighborhoods of Washington was largely successful and they remain in only a few areas of the city.

The Foggy Bottom Historic District is, as an area, representative of an important part of Washington's development. It is significant for its association with Washington's industrial history and the immigrant lifestyle; for its important collection of late nineteenth century worker housing; and for the information it yields on the development of urban vernacular architecture.

JUN 23 1987

United States Department of the Interior
National Park Service

National Register of Historic Places
Continuation Sheet

Foggy Bottom Historic District, Washington, D.C.

Section number 9 Page 2

Domike, Zachery. "Foggy Bottom" in Washington on Foot, edited by Allan A. Hodges. Washington, DC: National Capital Area Chapter American Institute of Planners, 1976.

Green, Constance McLaughlin. Washington--Capital City, 1879-1950. Princeton, N.J.: Princeton University Press, 1963.

Gutheim, Frederick. Worthy of the Nation: The History of Planning for the Nation's Capital. Washington, DC: Smithsonian Institution/National Capital Planning Commission, 1977.

Kayser, Elmer Louis. Bricks Without Straw: The Evolution of George Washington University. New York: Appleton-Century-Crofts/Meredith Corp., 1970.

Lee, Antoinette J. "Foggy Bottom" in Foggy Bottom News, Washington, DC: March 1977.

_____. "Foggy Bottom" in unpub. revision of Washington on Foot National Capital Area Chapter American Institute of Planners.

Ricknell, Grace Vawter. The Inhabited Alleys of Washington, D.C. Washington, DC: Ideal Printery, 1912.

Rifkind, Carole. A Field Guide to American Architecture. New York: New American Library, 1980.

Sherwood, Suzanne Berry. Foggy Bottom 1800-1975: A Study in the Uses of an Urban Neighborhood. GW Washington Studies, No. 7. Washington, DC: George Washington University Press, 1978.

Wright, Russell, et al. A Guide to Delineating the Edges of Historic Districts. Washington, DC: Preservation Press, National Trust for Historic Preservation, 1976.

VERTICAL FILES

Washingtoniana Room, Martin Luther King Jr. Public Library.

Columbia Historical Society Library.

JUN 23 1987

United States Department of the Interior
National Park Service

**National Register of Historic Places
Continuation Sheet**

Foggy Bottom Historic District, Washington, D.C.

Section number 9 Page 3

MAPS

Topographical Maps of the District of Columbia. Washington, DC:
A. S. Boschke, 1857.

Real Estate Directory of the City of Washington, D.C. Washington:
E. F. M. Faetz and F. W. Pratt, 1874.

A Complete Set of Surveys and Plats of Properties in the City of
Washington (District of Columbia). Philadelphia: C. M. Hopkins,
1887, 1892.

District of Columbia Physical. "Topographical Map of the District of
Columbia and a Portion of Virginia." Washington, DC: Army Corps
of Engineers, 1889.

Baist's Real Estate Atlas of Surveys of Washington, D.C. Vol. 1,
Philadelphia: G. W. Baist, 1903, 1919, 1924, 1932, 1939, 1956,
1968.

JUN 23 1987

United States Department of the Interior
National Park Service

National Register of Historic Places
Continuation Sheet

Foggy Bottom Historic District, Washington, D.C.

Section number 10 Page 2

VERBAL BOUNDARY DESCRIPTION (continued)

alley to the northern boundary of lot 92, then eastward to the centerline of 24th Street; proceed south along the centerline of 24th Street to New Hampshire Avenue to H Street; continue west along the centerline of H Street to 25th Street; proceed north along the centerline of 25th Street to the southern edge of lot 42 in Square 17; proceed west along said lot line to the alley in square 17; continue through the alley and proceed north along the western line of lot 848 (encompassing lots 812 through 820, 28 through 35, and 834, 848 and 849) to the centerline of Eye Street; proceed west along the centerline of Eye Street to the centerline of 26th Street; proceed north on 26th Street to the northern edge of lot 73; proceed east along the northern edge of lot 73 to the easternmost corner of Hughes Mews and proceed south along the eastern edge of Hughes Mews to the northern edge of lots 883, 858, and 856; proceed east along said lots to the centerline of 25th Street; proceed north along the centerline of 25th Street to the origination point at the centerline of K Street.

BOUNDARY JUSTIFICATION (continued)

East Boundary: The eastern boundary is formed by the distinct visual difference in the urban fabric to the east of 24th Street and New Hampshire Avenue. In contrast to the low scale, late 19th/early 20th century residential buildings in the historic district, the area directly to the east features a series of privately owned high rise structures and the contemporary, large scale buildings which comprise the George Washington University Medical School.

South Boundary: The highway system and the visual difference between the buildings in the Historic District and that of the contemporary, large scale buildings to the south define this boundary.

West Boundary: The west boundary is formed by the steep grade caused by the development of Interstate 66. The open space of parkland along the west side of 26th Street and low scale buildings along the east side of this street contrast with the high rise urban fabric directly to the west.

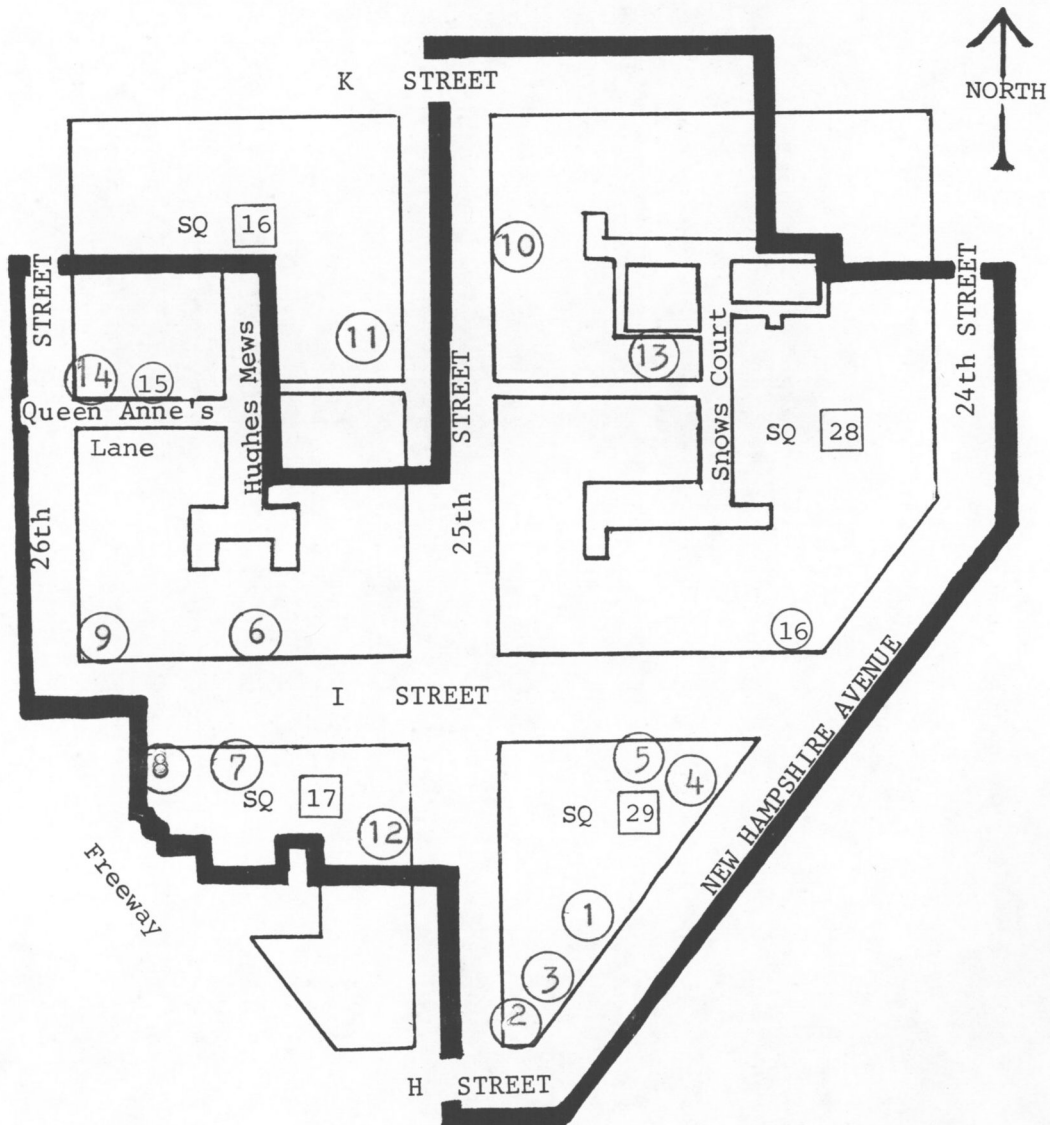
JUN 23 1987

United States Department of the Interior
National Park Service

National Register of Historic Places
Continuation Sheet

Foggy Bottom Historic District, Washington, D.C.

Section number MAPS Page 1



Circled numbers show photo location.
(refer to photograph inventory)

United States Department of the Interior
National Park Service

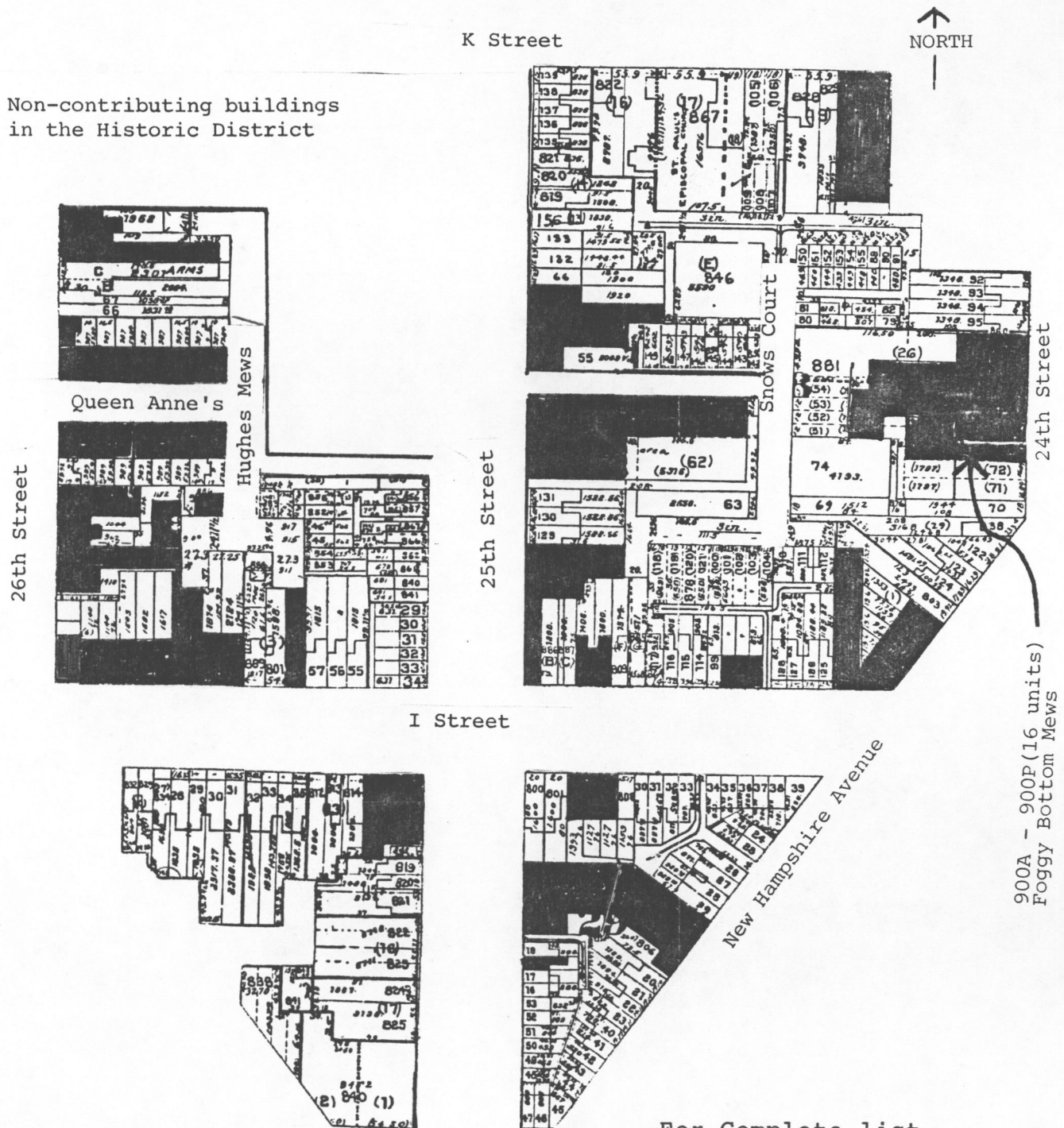
National Register of Historic Places
Continuation Sheet

Foggy Bottom
Historic District

Section number Maps Page 2

Washington, D.C.

Non-contributing buildings
in the Historic District



NOTE: shaded areas contain
more than one building.
Total number is 91.

H Street

For Complete list
Refer to
Inventory
(Maps, pp.3&4)

900A - 900P (16 units)
Foggy Bottom Mews

JUN 23 1987

**United States Department of the Interior
National Park Service**

**National Register of Historic Places
Continuation Sheet**

Foggy Bottom Historic District, Washington, D.C.

Section number MAPS Page 3

NON-CONTRIBUTING BUILDING ADDRESSES

SQUARE 16

Eye Street	25th Street	26th Street	Queen Anne's Lane	
2509	none	909	2521	2531
2515		911	2522	2532
2517	Hughes Mews	913	2523	2533
2519	900	915	2524	2534
2521	902	917	2525	2535
2523	904	925	2526	2536
2525		935	2527	2537
2527		939	2528	2538
2529		901-7	2529	
2531			2530	

SQUARE 17

Eye Street	25th Street
2502	830
2504	

SQUARE 28

Eye Street	25th Street	K Street	New Hampshire Avenue
2403	903	2416	900
2405	905		902
2413	907	24th Street	906
2415	911	922	908
2417	913		
2433	925	Snow's Court	
2435	931	none	

Foggy Bottom Mews (off 24th St.)
900A-900P (16 Units)

United States Department of the Interior
National Park Service

JUN 23 1987

National Register of Historic Places Continuation Sheet

Foggy Bottom Historic District, Washington, D.C.

Section number MAPS Page 4

NON-CONTRIBUTING BUILDING ADDRESSES

SQUARE 29

New Hampshire Avenue 824	Eye Street 2418 2422 2424
25th Street 825	

United States Department of the Interior
National Park Service

FOGGY BOTTOM HISTORIC DISTRICT

National Register of Historic Places
Continuation Sheet

WASHINGTON, D.C.

Section number MAPS Page 5



DETAIL OF USGS MAP OF DISTRICT

UTM Coordinates :

- a. 18 321800 4307750
- b. 18 322050 4307750
- c. 18 322050 4307300
- d. 18 321800 4307300

NATIONAL REGISTER OF HISTORIC PLACES
EVALUATION/RETURN SHEET

Foggy Bottom Historic District

Substantive Review

Washington, D.C.

Working No. SEP 23 1986

Fed. Reg. Date: _____

Date Due: 11-2-86

Action: ACCEPT _____

RETURN _____

REJECT _____

Federal Agency: _____

- resubmission
- nomination by person or local government
- owner objection
- appeal

Substantive Review: sample request appeal NR decision

Reviewer's comments:

Appeal chronology: 1) appeal letter Sept. 23, 86

2) Keeper's letter to SHPO (Oct 31, 86)

3) SHPO says nomin. will be submitted (12/19/86)

4) nomination submitted to N.R. (6/23/87) - returned to State for correction

Recom./Criteria _____

Reviewer _____

Discipline _____

Date _____

_____ see continuation sheet

Nomination returned for: technical corrections cited below *5) nomination resubmitted 6/23/87*

substantive reasons discussed below *6) district listed in N.R. 10/14/87*

1. Name _____

2. Location _____

3. Classification

Category	Ownership Public Acquisition	Status Accessible	Present Use
----------	---------------------------------	----------------------	-------------

4. Owner of Property _____

5. Location of Legal Description _____

6. Representation in Existing Surveys

Has this property been determined eligible? yes no

7. Description

Condition		Check one	Check one
<input type="checkbox"/> excellent	<input type="checkbox"/> deteriorated	<input type="checkbox"/> unaltered	<input type="checkbox"/> original site
<input type="checkbox"/> good	<input type="checkbox"/> ruins	<input type="checkbox"/> altered	<input type="checkbox"/> moved date _____
<input type="checkbox"/> fair	<input type="checkbox"/> unexposed		

Describe the present and original (if known) physical appearance

- summary paragraph
- completeness
- clarity
- alterations/integrity
- dates
- boundary selection

8. Significance

Period Areas of Significance—Check and justify below

Specific dates Builder/Architect

Statement of Significance (*in one paragraph*)

- summary paragraph
- completeness
- clarity
- applicable criteria
- justification of areas checked
- relating significance to the resource
- context
- relationship of integrity to significance
- justification of exception
- other

9. Major Bibliographical References

10. Geographical Data

Acreage of nominated property _____

Quadrangle name _____

UTM References _____

Verbal boundary description and justification

11. Form Prepared By

12. State Historic Preservation Officer Certification

The evaluated significance of this property within the state is:

____ national ____ state ____ local

State Historic Preservation Officer signature

title date

13. Other

- Maps
- Photographs
- Other

Questions concerning this nomination may be directed to _____

Signed _____ Date _____ Phone: _____

United States Department of the Interior
National Park Service

National Register of Historic Places Continuation Sheet

Foggy Bottom Historic District, Washington, D.C.

Section number Photo- Page 1
graphs

All photographs were taken by Tracerics, Washington, D.C. in November, 1983. Original negatives are stored in their archives. Photographs are referenced by map number to show location within the district.

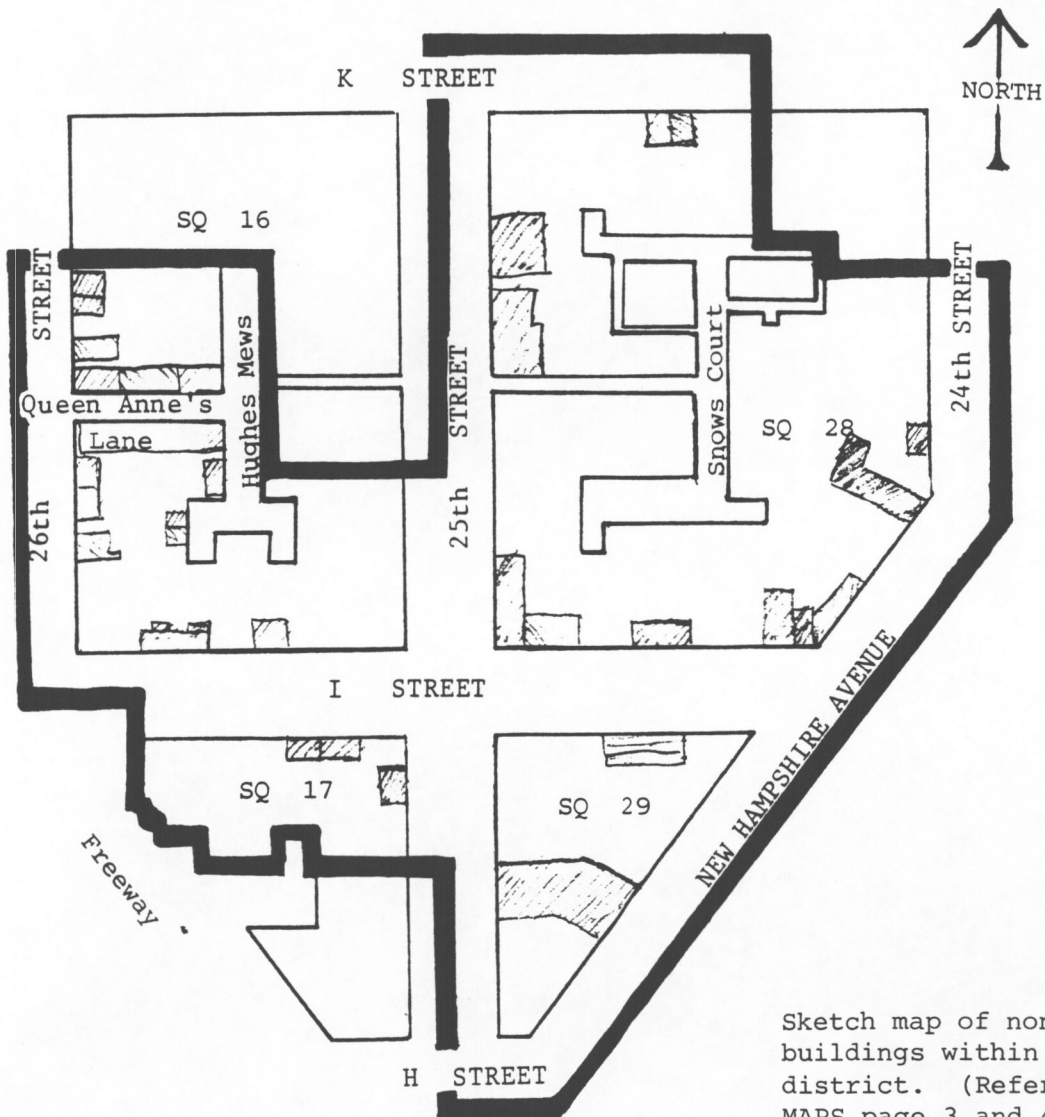
1. 800-818 New Hampshire Ave., N.W. - viewing west
2. 801 25th Street, N.W. - viewing northwest
3. 802 New Hampshire Ave, N.W. - viewing northwest
4. 828-838, and 842 New Hampshire Avenue, N.W. -viewing north
5. 842-844 New Hampshire Ave. N.W. and 2400-2416 Eye Street, N.W. - viewing southwest
6. 2505-2507 Eye Street, N.W. - viewing north
7. 2506, 2508, 2512-2518 Eye Street, N.W. - viewing southwest
8. 2530, 2532 Eye Street, N.W. - viewing south
9. 901-907 26th Street, N.W. - viewing northeast
10. 900 block of 25th Street, N.W. - viewing northeast
11. 900 block of 25th Street, N.W. - viewing southeast
12. 822-828 25th Street, N.W. - viewing west
13. Alley Dwellings: Nos. 1-7 Snow's Court - viewing northwest
14. 900 block of 26th Street, N.W. - viewing north

United States Department of the Interior
National Park Service

National Register of Historic Places
Continuation Sheet

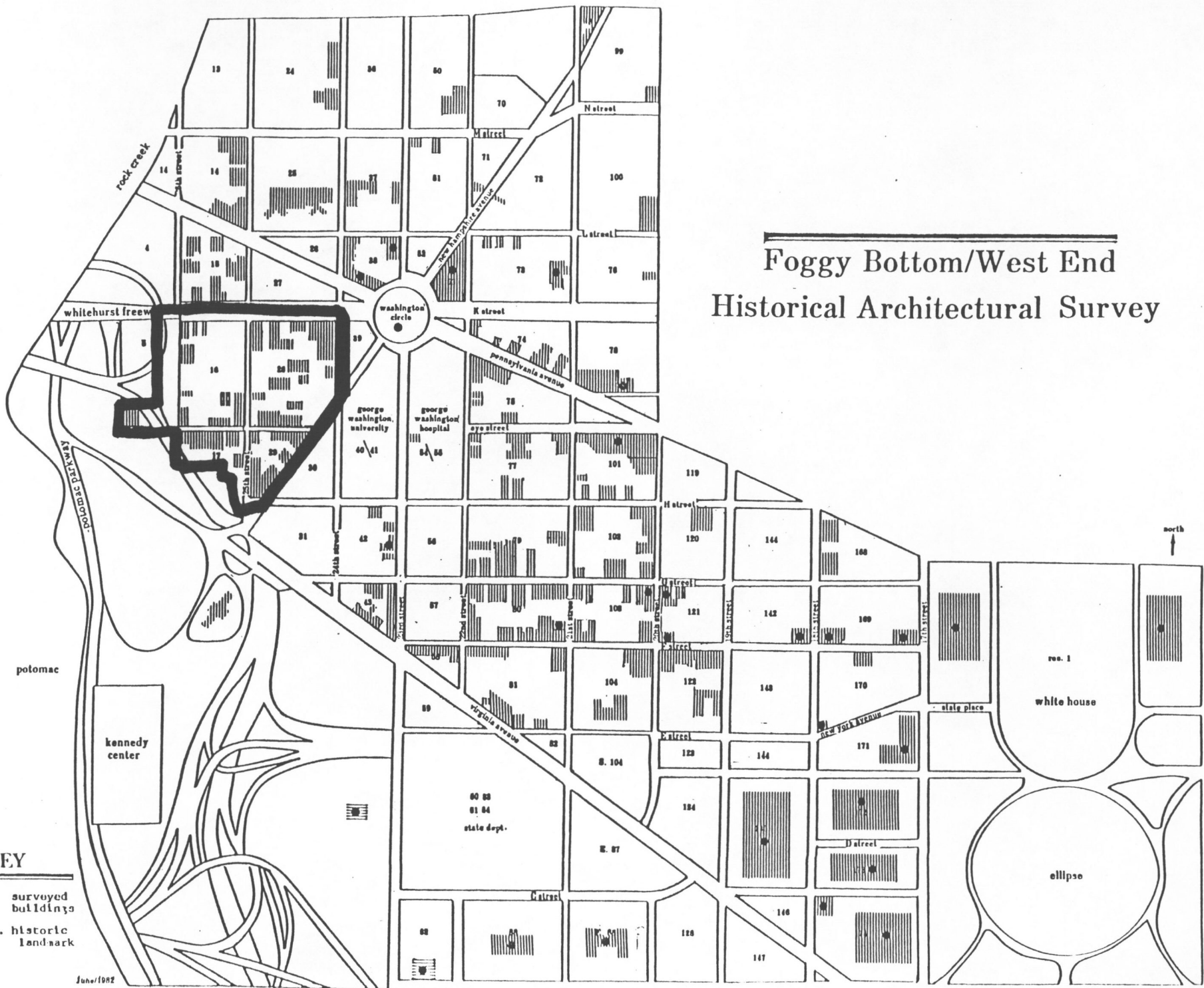
FOGGY BOTTOM
HISTORIC DISTRICT
Washington, D.C.

Section number MAPS Page 2



Sketch map of non-contributing buildings within the historic district. (Refer to Inventory, MAPS page 3 and 4)

Foggy Bottom/West End Historical Architectural Survey



KEY

surveyed buildings

D.C. historic landmark

June/1982

Alan Fitzgibbon for Thomas

410.26 A listing of properties of particular prehistoric, historic, cultural, and/or architectural significance; indicate whether they are listed in local inventory list and/or listed in the National Register of Historic Places.

SQUARE 5

2635 and 2637 Eye Street, N.W. (Lots 809 and 811)
Builder: Peter McCartney; Date: 1879

2639 I Street, N.W. (Lot 811)
Builder: Unknown; c. 1870's (after 1874)

SQUARE 16

2534 K Street, N.W. (Lot 50)
Builder: Peter McCartney; Date: 1889

2524 K Street, N.W. (Lot 63)
Builder: Unknown; Date: c. 1870's (after 1874)

2520 K Street, N.W. (Lot 65)
Builder: Unknown; Date: c. 1870's (after 1874)

900-910 25th Street, N.W. (Lots 34-29)
Builder: Dannehower and Sons; Date: 1885

914 and 914-1/2 25th Street, N.W. (Lots 861 and 862)
Builder: B.H.Warner; Date 1887

916-922 25th Street, N.W. (Lots 866, 867, 857, 856)
Builder: Dannenhower and Sons; Date: 1885

2503-2505-2307 Eye Street, N.W. (Lots 55-57)
Builder: George Dove; Architect: Thomas Francis, Jr.; Date: 1897

2511 Eye Street, N.W. (Lot 801)
Builder: S.J. Brinkley; Architect: Julius Wenig; Date: 1904

901-907 26th Street, N.W. (Lot 810)
Renovated: Swaney Kerns, architects, 1979

913 26th Street, N.W. (Lot 838)
Builder: Brooks and Cater; Date: 1887

947 26th Street, N.W. (Lot 820)
Builder: Peter McCartney; Date: 1886

949-955 26th Street, N.W. (Lots 59-62)
Builder: J.W.Servi; Date: 1892

Alley Dwellings

911-17, 919-21 Hughes Mews (Lots 43-48)
Builder: Unknown; Date: c. 1890

SQUARE 17

822 25th Street, N.W. (Lot 821)
Builder: Unknown; Date: c. 1870

824 25th Street, N.W. (Lot 820)
Builder: P. Hough; Date: 1878

826 25th Street, N.W. (Lot 819)
Builder: M. Clancey; Date: 1878

828 25th Street, N.W. (Lot 818)
Builder: J. Scanlan; Date: 1884

2500 Eye Street, N.W. (Lot 817)
Builder: Unknown; Date: c. 1860's
(This is the oldest house in the district.)

2506 Eye Street, N.W. (Lot 814)
Builder: Unknown; Date: c. late 1880's

2508 Eye Street, N.W. (Lot 813)
Builder: Peter McCartney; Date: 1887

2512-2518 Eye Street, N.W. (Lots 32-35)
Builder: H.A. Kite; Architect: Albert Beers; Date: 1911

2520-2528 Eye Street, N.W. (Lots 31-28, 834)
Builder/Architect: N. Grimm; Date: 1911

2530-32 Eye Street, N.W. (Lots 829 and 832)
Builder: Peter McCartney; Date: 1889

SQUARE 28

2408 K Street, N.W. (Lot 833)
Builder: Unknown; Date: 1873
Addition: 1892

2420 K Street, N.W. (Lot 829)
Builder: J. Grant; Architect: N. Grimm; Date: 1890

2422 K Street, N.W. (Lot 828)
Builder: Unknown; Date: 1880

2424-26 K Street, N.W. (Lot 106)
Builder: Unknown; Date: c. 1870's

912, 912-1/2, 914, 914-1/2 25th Street, N.W. (Lots 840-843)
Builder: B.H. Warner; Date: 1887

915-917 25th Street, N.W. (Lots 129-130)
Builder: E.T. Grinsmond; Architect: Albert Beers; Date: 1909

947 25th Street, N.W. (Lot 156)
Builder: J. McGraw; Date: 1879

949 25th Street, N.W. (Lot 819)
Builder: Unknown; Date: late 1880's

951 25th Street, N.W. (Lot 820)
Builder: Unknown; Date: late 1880's

953 25th Street, N.W. (Lot 821)
Builder: Augh; Architect: George Ray; Date: 1909

955-61 25th Street, N.W. (Lots 135-139)
Builder: Unknown; Date: c. 1880's

910-12 New Hampshire Avenue, N.W. (Lots 23, 122)
Builder: Unknown; Date: c. 1880

2407-1/2, 2409, 2411 Eye Street, N.W. (Lots 126-128)
Builder: Simon Oppenheimer; Architect: A.H. Beers; Date: 1909

2413-2419 Eye Street, N.W. (Lots 96-99)
Builder: Duvall; Date: 1885

2421-2427 Eye Street, N.W. (Lots 114-117)
Builder: B. Burden; Architect: Joseph Burden; Date: 1889

2429 Eye Street, N.W. (Lot 6)
Builder: Peter McCartney; Date: 1888

2431 Eye Street, N.W. (Lot 809)
Builder: Peter McCartney; Date: 1881

936-942 24th Street, N.W. (Lots 95-92)
Builder: Unknown; Date: c. 1880's

Alley Dwellings

1-7, 8 and 9 Snow's Court (Lots 892, 147-143, 850, 80 and 81)
Builder: Unknown; Date: c. 1880

10-23 Snow's Court (Lots 150-155, 89-91, 82, 79, 110-112, 63)
Builder: Unknown; Date: c. 1880

SQUARE 29

801-821 25th Street, N.W. (Lots 47, 46, 48-53, 16-19)

800-810 New Hampshire Avenue, N.W. (Lots 45-40)

Builder: Frank Carver; Architect: Charles Burden; Date: 1890

814-820 New Hampshire Avenue, N.W.

Builder: Unknown; Date: c. 1890

828-838, 842-844 New Hampshire Avenue, N.W. (Lots 29-26, 25, 24)

2400-2416 Eye Street, N.W. (Lots 39-34)

Builder: Builder/Architect: James Grant; Date: 1886

2426-2428 Eye Street, N.W. (Lots 800, 801)

835 25th Street, N.W.

Builder: J. Dorsey; Date: 1887

410.27 General dates of construction or of significance of important elements in the proposed or proposed amended Historic District.

The dates of construction of important elements run from 1870 through to 1911 representing the range of the most significant historic structures within the Historic District. Many buildings constructed after the latter date reflect the scale, size, style and function of the earlier buildings, and therefore there are many structures that contribute to the district even though they are of substantially later dates.

410.28 A list of bibliographic and other sources used to prepare the application; indicate where the reference material is archived.

BOOKS, PUBLISHED AND UNPUBLISHED MANUSCRIPTS

Borchert, James. Alley Life in Washington: Family, Community, Religion, and Folklife in the City, 1850 - 1970. Chicago: University of Illinois Press, 1980.

Bryan, Wilhemus Bogart. A History of the Nation's Capital. New York: Macmillan Company, 1916.

Domike, Zachery. "Foggy Bottom" in Washington on Foot, edited by Allan A. Hodges. Washington, DC: National Capital Area Chapter American Institute of Planners, 1976.

Green, Constance McLaughlin. Washington--Capital City, 1879-1950. Princeton, NJ: Princeton University Press, 1963.

Gutheim, Frederick. Worthy of the Nation: The History of Planning for the Nation's Capital. Washington, DC: Smithsonian Institution/National Capital Planning Commission, 1977.

Kayser, Elmer Louis. Bricks Without Straw: The Evolution of George Washington University. New York: Appleton-Century-Crofts/Meredith Corp., 1970.

Lee, Antoinette J. "Foggy Bottom" in Foggy Bottom News, Washington, DC: March 1977.

_____. "Foggy Bottom" in unpub. revision of Washington On Foot National Capital Area Chapter American Institute of Planners.

Ricknell, Grace Vawter. The Inhabited Alleys of Washington, D.C. Washington, DC: Ideal Printery, 1912.

Rifkind, Carole. A Field Guide to American Architecture. New York: New American Library, 1980.

Sherwood, Suzanne Berry. Foggy Bottom 1800-1975: A Study in the Uses of an Urban Neighborhood. GW Washington Studies, No. 7. Washington, DC: George Washington University Press, 1978.

Wright, Russell, et al. A Guide to Delineating Edges of Historic Districts. Washington, DC: Preservation Press, National Trust for Historic Preservation, 1976.

VERTICAL FILES

Washingtoniana Room, Martin Luther King Jr. Public Library
Columbia Historical Society Library

MAPS

Topographical Maps of the District of Columbia. Washington, DC:
A.S. Boschke, 1857.

Real Estate Directory of the City of Washington, D.C.
Washington: E.F.M. Faehtz and F.W. Pratt, 1874.

A Complete Set of Surveys and Plats of Properties in the
City of Washington (District of Columbia).
Philadelphia: C.M. Hopkins, 1887, 1892.

District of Columbia Physical. "Topographical Map of the
District of Columbia and a Portion of Virginia."
Washington, DC: Army Corps of Engineers, 1889.

Baist's Real Estate Atlas of Surveys of Washington, D.C.
Vol. 1, Philadelphia: G.W. Baist, 1903, 1919, 1924,
1932, 1939, 1956, 1968.

Map of Hamburgh, 1771, 1793, n.d., Record Group 42, National
Archives and Record Center, Washington, DC.

Plat of the Town of Hamburgh as in 1771, 1894 , Record Group 42,
National Archives and Record Center, Washington, DC.

410.23 If the district is proposed for designation principally for its prehistoric, historic and/or cultural significance, a description of the existing physical condition of the district and its relation to the prehistoric, historic and/or cultural significance of the district.

See Section 410.22.

Square 28

2421-2427 Eye Street present the picturesque quality of Foggy Bottom's small scale rowhouses. These four buildings were constructed in 1889 by Joseph Burden to the designs of B. Burden. The houses offer a simple interpretation of English vernacular design that gained popularity with the English Arts and Crafts style. In the 1930's, the use of vernacular forms was to gain popularity as the "period" house, but this early use is highly unusual and indicates a level of stylistic awareness that is not typical to Foggy Bottom. Burden handles the compositions very well, successfully designing beautifully proportioned small houses. Two stories high and two bays wide, two of the houses feature a variation of a bellcast roof, another is parapetted, and the fourth has a front gable. Recessed entries and carefully proportioned fenestration add dimension to the designs.

2407-2409-2411 Eye Street were designed in 1909 by A.H. Beers for builder Simon Oppenheimer. Four buildings were originally designed. They are two story high and three bays wide. Constructed of brick set in Flemish bond, they are very simple, flat-fronted buildings, yet they possess an elegance of composition that is based on very careful attention to proportion. Wide rusticated lintels accent the windows, while corbeled brick decorates the cornice.

Peter McCartney worked on Square 28 at 2431 Eye Street in 1881 with this building for John Casey. Two bays wide, the building features a one-story octagonal bay. The cornice is a deeply set, triangulated corbel. This cornice is very similar to the one seen at 828 26th Street in the building Joseph Scanlan built in 1884.

Square 29

Square 29, one of the more intact squares in all of Foggy Bottom, illustrates the charm possible at a modest price and scale. The juxtaposition of buildings with flat facade next to those featuring refined articulation creates a successful visual interplay. The square presents a picturesque appearance, illustrating the ethnic roots of Foggy Bottom, and establishing a very intimate street scale.

The first large group to be built in the Historic District area, this 16 building group, 828-38, 842-44 New Hampshire, 2400-2416 I Streets, was designed and built in 1886 by James H. Grant for speculator Samuel Norments. With the exception of 842-44 New Hampshire, these buildings are replicates of each other. Two bays wide and two stories high, these buildings feature a decorated cornice and segmented arches decorated with beaded moldings over the openings. They are simple buildings but possess a comeliness borne of scale, proportion and unity. The buildings run in two groups, one facing Eye Street, the other facing New Hampshire Avenue, joined at the corner by a large building. Designed as part of the group, it was originally a store and a dwelling. Using the same motifs seen in

historical period. The proposed district is representative of a larger area that is no longer intact to its full boundaries. The boundaries of this district are based on the distinctive groupings of surviving structures, as well as on the visual and historical association of the buildings.

North Boundary. The northern boundary of the Historic District is the center line of K Street, N.W. This wide avenue forms a strong and distinct boundary separating the Historic District from the area to the north.

East Boundary. The eastern boundary is formed by the distinct visual difference in the urban fabric to the east of 24th Street and New Hampshire Avenue. In contrast to the low-scale, late 19th/early 20th century residential buildings in the historic district, the area directly to the east features a series of privately owned high-rise structures and the contemporary, large-scale buildings which comprise the George Washington University Medical School.

South Boundary. The highway system and the visual difference between the buildings in the Historic District and that of the contemporary, large-scale buildings to the south establish this boundary. The three buildings extant on Square 5 are included in the Historic District due to their direct architectural relationship to the district and to the fact that prior to the construction of the Whitehurst Freeway these buildings were part of a series of similar buildings that were contiguous to the Historic District.

West Boundary. The west boundary is formed by the steep grade caused by the development of Interstate 66. The open space of parkland along the west side of 26th Street and low-scale buildings along the east side of this street contrast with the high-rise urban fabric directly to the west.

NATIONAL REGISTER OF HISTORIC PLACES
EVALUATION/RETURN SHEET

Substantive Review

Foggy Bottom Historic District
Washington
DISTRICT OF COLUMBIA

JUN 23 1987

Working No. _____

Fed. Reg. Date: _____

Date Due: 7/30/87 - 8/7/87

Action: ACCEPT

RETURN 8-4-87

REJECT

Federal Agency: _____

- resubmission
- nomination by person or local government
- owner objection
- appeal

Substantive Review: sample request appeal NR decision

Reviewer's comments:

Nomination must be returned for technical & substantive reasons noted below & on reverse

Recom./Criteria Return

Reviewer Patrick Andrus

Discipline Historian

Date 8/4/87

see continuation sheet

Nomination returned for: technical corrections cited below
 substantive reasons discussed below

1. Name

2. Location

3. Classification

Category	Ownership	Status	Present Use
	Public Acquisition	Accessible	

4. Owner of Property

5. Location of Legal Description

6. Representation in Existing Surveys

Has this property been determined eligible? yes no

7. Description

- | | | |
|------------------------------------|---------------------------------------|--|
| Condition | Check one | Check one |
| <input type="checkbox"/> excellent | <input type="checkbox"/> deteriorated | <input type="checkbox"/> original site |
| <input type="checkbox"/> good | <input type="checkbox"/> ruins | <input type="checkbox"/> moved |
| <input type="checkbox"/> fair | <input type="checkbox"/> unexposed | date _____ |

Describe the present and original (if known) physical appearance

The number of resources in the district is not consistently cited - pg. 1 of form shows 88 non-contributing bldgs., pp. 3-4 list 90 non-contributing bldgs, and the district site map shows 31 non-contributing. Please clarify. Also, there is no discussion provided explaining how non-contributing bldgs. are defined - are these new construction or altered older bldgs? Please provide a discussion of the integrity of the district - of the 224 bldgs, 88 are non-contributing. Please provide a district map showing all bldgs in the district and code which contribute and which do not. Please provide representative photos of non-contributing resources.

- summary paragraph
- completeness
- clarity
- alterations/integrity
- dates
- boundary selection

8. Significance

Period Areas of Significance—Check and justify below (associated with ethnic immigration, and industry) and architectural importance. The form only checks criterion C. To be listed for association with events, criterion A must also be checked. The nomination makes a good case for the district's architectural significance and historic importance for association with Irish & German immigration to Wash. D.C. The area of significance "industry" has also been checked yet there do not appear to be any industrial properties in the district.

Builder/Architect

Statement of Significance (in one paragraph)

summary paragraph
 completeness
 clarity
 applicable criteria
 justification of areas checked
 relating significance to the resource
 context
 relationship of integrity to significance
 justification of exception
 other

distinct. If there are no resources directly related to the area of industry located in the district, then industry should be dropped as an area of significance. The presence of the homes of industrial workers in the district is too indirect

9. Major Bibliographical References

10. Geographical Data a connection to include industry as important to the nominated area. From the form it is not clear if there ever were industrial buildings located in the nominated area.

Acreage of nominated property
 Quadrangle name
 UTM References

Verbal boundary description and justification

11. Form Prepared By

12. State Historic Preservation Officer Certification

The evaluated significance of this property within the state is:

___ national ___ state ___ local

State Historic Preservation Officer signature

title date

13. Other It appears that the building(s) at 901-907 26th ST (item 7p6) does not retain integrity from the district's period of significance - only the front brick wall of one bld. and the facade of the other remains. Please either change this building's status to non-contributing or explain how it still retains integrity despite the severe alterations.

Maps
 Photographs
 Other

Questions concerning this nomination may be directed to

Signed Patrick Andrews Date 8/4/87 Phone:

NATIONAL REGISTER OF HISTORIC PLACES
EVALUATION/RETURN SHEET

Foggy Botton Historic District
Washington
DISTRICT OF COLUMBIA

Substantive Review

Working No. 6/23/87
Fed. Reg. Date: 2/7/89
Date Due: 10/17/87
Action: ACCEPT 10-14-87
 RETURN
 REJECT
Federal Agency: _____

- resubmission
- nomination by person or local government
- owner objection
- appeal

Substantive Review: sample request appeal NR decision

Reviewer's comments:

On resubmission, nomination form has been amended to address questions raised re. # of resources, definition of contributing/non-cont. maps, photos etc. District is historically & architecturally significant

Recom./Criteria accept Ad c
Reviewer Patrick Andrews
Discipline Historian
Date 10/14/87
_____ see continuation sheet

Nomination returned for: _____ technical corrections cited below
_____ substantive reasons discussed below

1. Name

2. Location

3. Classification

Category	Ownership	Status	Present Use
	Public Acquisition	Accessible	

4. Owner of Property

5. Location of Legal Description

6. Representation in Existing Surveys

Has this property been determined eligible? yes no

7. Description

Condition	Check one	Check one
<input type="checkbox"/> excellent	<input type="checkbox"/> deteriorated	<input type="checkbox"/> original site
<input type="checkbox"/> good	<input type="checkbox"/> ruins	<input type="checkbox"/> moved date _____
<input type="checkbox"/> fair	<input type="checkbox"/> unexposed	
	<input type="checkbox"/> unaltered	
	<input type="checkbox"/> altered	

Describe the present and original (if known) physical appearance

- summary paragraph
- completeness
- clarity
- alterations/integrity
- dates
- boundary selection



Foggy Bottom Historic District
Washington D.C.

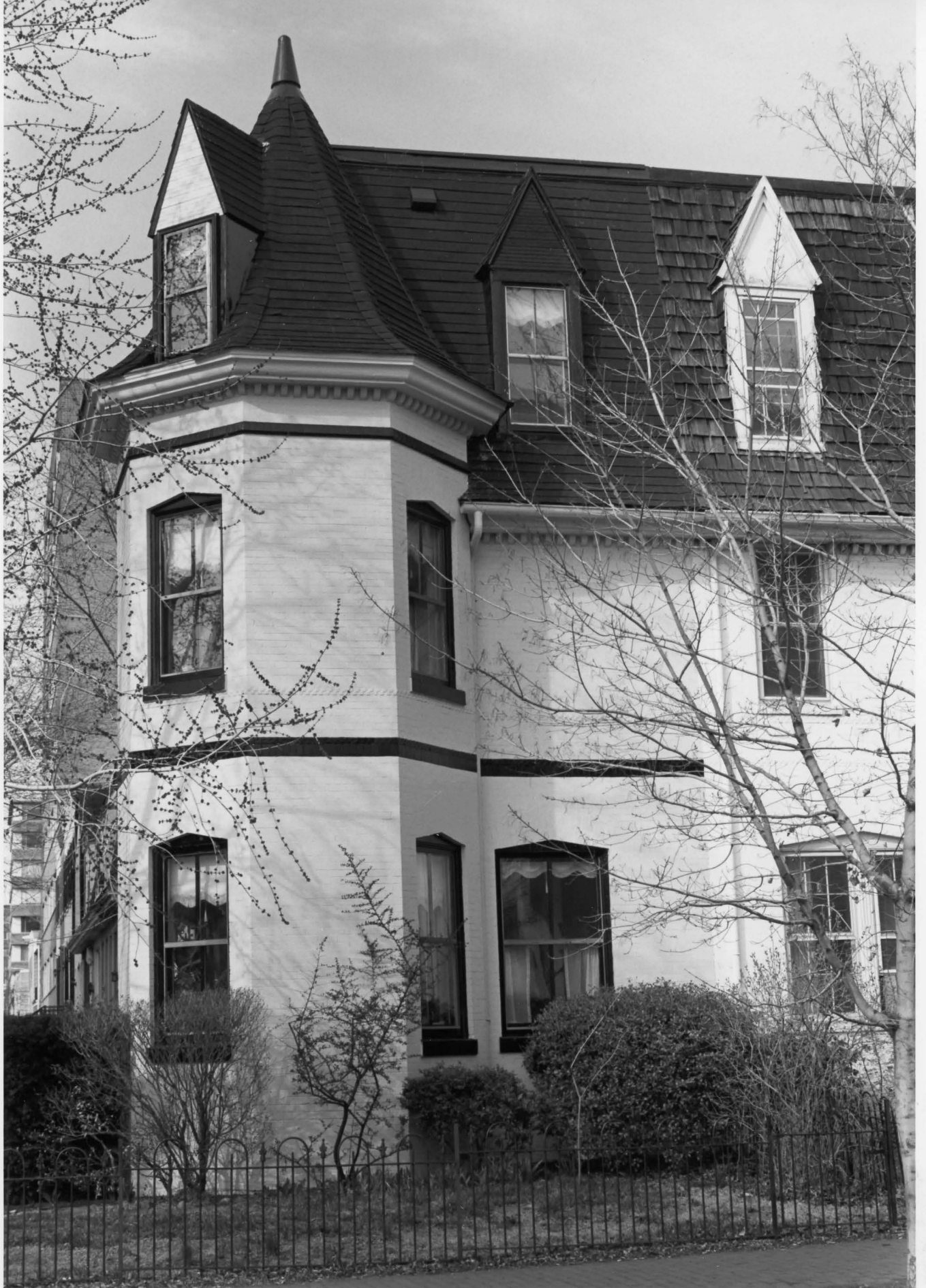
Traceries, 1983

800-818 New Hampshire Ave. N.W.

Viewing west

Photo # 1

JUN 23 1987



JUN 22 1997

Foggy Bottom Historic District

Washington D.C.

Tracenes, 1983

801 25th St., N.W.

Viewing Northwest

Photo # 2



802 New Hampshire Ave., N.W. **3.**
— looking northwest
square 29, lot 44 Traceries, 11/83

Foggy Bottom Historic District

Washington, D.C.

Traceries, 1983

802 New Hampshire Ave. N.W.

Viewing northwest

Photo #3

JUN 23 1987



828-838, 842 New Hampshire Ave., N.W. 4.
looking north
square 29 Tracerics, 11/83

Foggy Bottom Historic District

Washington, D.C.

Traceries, 1983

828-838, + 842 New Hampshire Ave. N.W.

Viewing north

Photo # 4

JUN 23 1987



JUN 23 1987

Foggy Bottom Historic District
Washington, D.C.

Traceries, 1983

842 - 844 New Hampshire Ave N.W.
+ 2400 - 2416 Eye Street N.W.

Viewing southwest

Photo #5



2505-2507 Eye St., N.W.
— looking north, square 16
Traceries, 11/83

Foggy Bottom Historic District
Washington D.C.

Traceries, 1983

2505-2507 Eye Street N.W.

Viewing north

Photo # 6

JUN 23 1981



2506, 2508, 2512-2518 Eye St., N.W. 7.
looking southwest
square 17 Traceries, 11/83

Foggy Bottom Historic District
Washington D.C.

Traceries, 1983

2506, 2508, 2512-2518 Eye St. N.W.

viewing southwest

Photo # 7

JUN 23 1981



Foggy Bottom Historic District

JUN 23 1987

Washington, D.C.

Traceries, 1983

2530-2532 Eye Street, NW

Viewing south

Photo #8

901/07 26th St., N.W.

— looking northeast

square 16, lot 810 Traceries, 11/83

9.



Foggy Bottom Historic District
Washington, D.C.

JUN 23 1987

Traceries, 1983

901-907 26th Street N.W.

Viewing northeast

Photo # 9



11) 900 block, 25th St., N.W.
10 looking southwest
square 16 Traceries, 11/83

Foggy Bottom Historic District
Washington D.C.

JUN 23

Traceries, 1983

900 block of 25th Street, N.W.

viewing northeast

Photo #10



900 block, 25th St., N.W.
looking ~~northeast~~ ^{southeast}
square 28 Traceries

17
11

Foggy Bottom Historic District
Washington D.C.

Traceries, 1983

900 block of 25th Street N.W.
Viewing southeast

Photo # 11

JUN 23 1987



822-828 25th St., N.W.

looking west
square 17

Traceries, 11/83

13
12

Foggy Bottom Historic District
Washington D.C.

Traceries, 1983

822-828 25th Street, N.W.

Viewing west

Photo #12

JUN 23 1987

Alley dwellings, 1-7 Snow's Court
looking northwest
square 28

Traceries, 11/83

#4

13



Foggy Bottom Historic District
Washington D.C.

JUN 23 1987

Traceries, 1983

Alley Dwellings: Nos. 1-7 Snow's Court

Viewing northwest

Photo # 13



15) 900 block, 26th St., N.W.
(14) looking north
square 16, Traceries 11/83

Foggy Bottom Historic District
Washington D.C.

Traceries, 1983

900 block of 26th Street, NW.

Viewing north

Photo # 14

JUN 23 1987



FOGGY BOTTOM HISTORIC DISTRICT

WASHINGTON DC

PHOTO # 15

QUEEN ANNE'S LANE, NW

209159
if-10A
Fred

Image
photo - processing
by
photography by:



FOGGY BOTTOM HISTORIC DISTRICT

WASHINGTON DC

PHOTO # 16

NEW HAMPSHIRE AVENUE
NEAR EYE STREET, NW

photography by.

photo - processing
by

image

209159

FOA

Med

NAME

- Foggy Bottom Historic District

LOCATION

Washington, D.C.

STATE

APPEAL

FED. REG. PENDING

DATE RECEIVED

DATE RETURNED TO SHPO OR FED. REG.

DATE RETURNED TO N.R.

DATE SENT TO CONGRESS

DATE LISTED IN N.R.

SN FN NHL NPS HABS HAER

REMARKS

TRACERIES

5 June 1984

Mr. Ron Lewis, Chief
Office of Historic Preservation
D.C. Department of Consumer and Regulatory Affairs
614 H Street, N.W. Room 305
Washington, D.C.

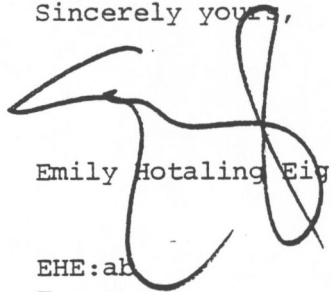
Dear Ron:

Enclosed is an application for Foggy Bottom Historic District.
You will find two originals and 15 copies of application form.

I have also enclosed a list of property owners and lot numbers.

Thank you.

Sincerely yours,



Emily Hotaling Eigh

EHE:ab
Enc.



1606 Twentieth Street, N.W., Suite 201
Washington, D.C. 20009 • 202 462-0333

JOINT COMMITTEE OF LANDMARKS OF THE NATIONAL CAPITAL

APPLICATION FORM
HISTORIC DISTRICT

APPLICATION TO:

- designate
- amend

summary of amendments _____

- rescind

GENERAL INFORMATION

Name or proposed name of Historic District Foggy Bottom

Summary description of proposed or proposed amended boundaries _____

This district in northwest Washington is composed of five squares bounded by K Street on the north, 24th Street to New Hampshire Avenue on the east, Virginia Avenue (including a portion of Square 5 that extends onto I Street) on the south, and 26th Street on the west.

Name of Applicant Advisory Neighborhood Commission 2A and Foggy Bottom Association
(If applicant is a community or neighborhood association, it must submit evidence that a substantial number of its members reside or own property in the proposed Historic District; if applicant is an organization, it must submit evidence that among its purposes is the promotion of historic preservation in the District of Columbia. A copy of its charter, articles of incorporation, or by-laws, setting forth such purpose, will satisfy this requirement.)

Address of Applicant ANC 2A -- 1920 G Street, N.W., Washington, D.C. 20006

Telephone 659-0011

Steve Levy
Signature of Applicant or authorized representative

30 May 1984
Date

Vice-Chairman , ANC 2A
Title of authorized representative

410.21 A statement of the prehistoric, historic, architectural and/or cultural significance of the proposed or proposed amended Historic District, and a general description of those qualities which make it significant.

The Foggy Bottom Historic District is a primarily residential district comprised of five squares of the larger Foggy Bottom neighborhood. The area was developed in the last quarter of the nineteenth century and the early years of the twentieth century. The predominant building type is the rowhouse, extant from the years when this area served as the home for the immigrant labor that manned the nearby industries. Apart from the primary sources which include the census records and city directories, two important secondary sources shed light on the history of Foggy Bottom. They are Suzanne Sherwood's Foggy Bottom-1800-1975 and Elmer Kayser's history of George Washington University, Bricks Without Straw.

The area popularly called Foggy Bottom is generally considered to fall between 17th Street on the east, Georgetown on the west, the Potomac River on the south, and Pennsylvania Avenue on the north. Historically, this area was divided into two sections---with 23rd Street dividing an upper-income neighborhood to the east from the working class/industrial area to the west. According to Elmer Kayser, historian of George Washington University, writing in Bricks Without Straw, "The name was never an official one, indicating fixed metes and bounds. For decades it was one of those popular terms of denigration which traditionally fix themselves to an area like Swampoodle, Frog Island, Herring Hill. ...Its great landmarks were two breweries, a large coal yard, extensive stables, the gas works, and a famous saloon. Time works a strange legerdemain. The development of a parkway along the Potomac, the contemporary craze for restoration of old dwellings, and the construction of great memorials, monumental government structures, high-rise office buildings, and luxurious apartments have given Foggy Bottom a distinct éclat and its name a place in the literature of politics, society and the arts." (p. 216-17).

This application addresses the residential area west of 24th Street, and proposes the Foggy Bottom Historic District to represent the working class people who lived here and worked in Washington's nearby industries in the late 19th and early 20th centuries. This area is an important artifact of Washington's physical development. It is valuable as an illustration of a working class neighborhood and for its presentation of urban vernacular architecture. Specifically, this area is significant as a historic district for four reasons: 1) its association with Washington's early working class; 2) its geographic and sociological relationship with one of Washington's early industrial areas; 3) as one of the few neighborhoods associated with European immigrants in a city noted for its relative absence of European-American communities; and 4) the value of its architecture as a representative of the lifestyles, endeavors, tastes and successes of these people.

1. Association with Washington's Early Working Class: The people responsible for building the houses here include well-known architects, such as A. H. Beers and Norman Grimm, and prominent developers such as Harry Kite and James Grant. But the men and women who gave Foggy Bottom its distinctive character were the carpenters, the bricklayers, the builders, the local investors/owners who touched Foggy Bottom with their dreams for a better life in America. These were men like Peter McCartney, an Irish immigrant who began as a carpenter and soon established his own successful contracting business. It is McCartney's name which is associated with more buildings in Foggy Bottom than any other person. It is the people like Pleasant Hough, a widow who was responsible for building her own home, a modest house, but one that reflected her economic stability. Or James Scanlan, another Irish immigrant, who rose from a job as bartender to the ownership of his own saloon, who then was able to build houses in the neighborhood. Further, the people who lived in Foggy Bottom, whether in individual houses or alley dwelling, spent most of their lives here, within this physical fabric, developing a "sleepy backwater" into a neighborhood that survives today. It is people like these that the Foggy Bottom Historic District celebrates.

2. The Geographical and Sociological Relationship with Washington's Early Industrial Area: This is the neighborhood that housed the people who worked in the nearby industries. These included the Godey's lime kilns; the Washington Gas and Light Company; the glass works; two breweries—the Abner/Drury and the Christian Heurich; and Cranford's Paving Company, the city's most prosperous. These people established a community with style and cohesion despite circumstances that might have discouraged others. It was after the Civil War, as Washington expanded, that Foggy Bottom was to establish its neighborhood character. The growth of industrial activity and an expanding ethnic population removed Foggy Bottom from the advantages that Alexander Shepherd and his public works program granted to most of Northwest Washington. Further, as improved public transportation encouraged those who could afford, either for economic or sociological reasons, to move from the sleepy backwater that was Foggy Bottom to do so, the population of the area became concentrated with poor immigrants who had to live close to their work. Primarily of German and Irish extraction, these people formed tight communities within Foggy Bottom. The Germans worked in the breweries, while the Irish worked for the Washington Gas and Light Company. The area proposed for the Historic District holds part of both these communities.

Hired to perform hard physical labor, these people worked long and hard under unpleasant conditions exaggerated by the soot, steam and odor of the industrial mix. Foggy Bottom was described by historian Kayser, "In the old days, there had been an appropriateness to the name, though Foggy Bottom had no official place in geographical nomenclature. It was bottom land and much of its lower fringe was swampy. The fogs which settled over the river bank were amplified by the smog from the gas works which emitted dirt-laden and malodorous clouds of smoke, day and night, touched up with violent spurts of flame that lit up the vicinity with an eerie glow." (Bricks Without Straw, p. 217) Foggy Bottom was the home for the very

poorest resident of the city, where inhabited alleys were commonplace, but it was also a place where the modest dreams of many were realized in simple housing. It was the very unpleasantness which left Foggy Bottom a forgotten corner of the city, that helped to provide hope for the immigrant residents. Foggy Bottom's environment and lack of popularity kept its land cheap and the opportunity for home ownership possible.

3. A Rare Example of a Washington Ethnic Neighborhood: Washington is the capital of a nation often symbolized by a melting pot, but unlike most U.S. urban centers, Washington does not have numerous strong ethnic communities. Many reasons have been put forward for this phenomenon, the most likely being the absence of an industrial economy having altered typical patterns of sociological development. Foggy Bottom's proximity to Washington's primary historical industrial area easily explains its ethnic associations. The ethnic groups maintained strong internal ties, and formed separate religious and social institutions, many of which still exist today. The Irish community had both a baseball team and a football team, the former was called the Emerald A.C. and the latter, the Irish Eleven. The West End Hibernian Society had been established by the 1880s. (Foggy Bottom, pp.12-13) Susan Sherwood, in her study, Foggy Bottom 1800-1975, relates a conversation with an old area resident who remembered that "the neighborhood was entirely German and Irish and that Germans only traded with Germans and Irish with Irish." (Foggy Bottom, p.12) The buildings that comprise this Historic District commemorate the German and Irish communities that co-existed in Foggy Bottom for so many years, and that continue today.

4. The Architecture as Representative of the Lifestyles, Endeavors, Tastes and Successes of the People: The extant residential architecture illustrates the physical development of a working class community—in its architectural vocabulary, in its craftsmanship, and in its building types. The houses that comprise the Foggy Bottom Historic District are modest in scale and size. Their style and ornament reflect limited circumstances. Their number and groupings correspond with the cohesiveness of the community. The houses here form a pleasing neighborhood of modest housing, carefully varied within similar type, scale, size and form, and style. It is vernacular urban housing representing the ethnic background, traditions, and skills of its residents, where the developers, builders and architects were often successful members of the community building in direct response to their neighbors needs.

The houses were primarily developed over a short period: most of the buildings date from the late 1870's through to the 1910's. The extant buildings represent stages of the area's development that corresponds to the changing economic scenario. From individually constructed houses (intended to be part of rows) built for their owners, to two or three attached houses built by area residents on speculation, to the entrance of professional developers seizing investment opportunities by meeting housing demands with low-cost rowhouses, the fabric of this area maintained a scale and building type. The neighborhood continued its ethnic association as

appropriate building stock met real needs of the neighborhood and housing reflected family needs and ability to pay.

As a subgroup of workers' housing, alley dwellings represent a curious departure from the mainstream evolution of most cities. James Borchert's in-depth study, Alley Life in Washington, presents substantial evidence that these alleys stood as bastions of a more rural folk culture in the heart of the rapidly modernizing city. As such, a fascinating subculture developed with significant historical and sociological implications. The emergence of alleys as areas of dwelling was due to the urban housing shortage in the middle of the 19th century. The first documented alley structures in Washington date back to approximately 1850. This initial phase of alley building consisted primarily of flimsy shanties and sheds, offering the barest protection. The great influx of ex-slaves, soldiers and vagrants following the Civil War further exacerbated the housing problem and provided the great stimulus for alley development. It is in the period from 1870-1892 that substantial frame and brick row houses began to appear in large numbers and close-knit communities comprised of unskilled workers and vagrants sprang into prominence.

Within the bounds of the historic district are two such alleys: Snow's Court (Square 28) and Hewes' Court (Square 16). Little is known of Hewes' Court except that it was very closely associated with Snow's Court. This alley, one of the first in Washington, was named for C.A. Snow, publisher of the National Intelligencer. Snow, who owned property on Square 28, built a green house and four frame dwellings during the 1850s in the square's interior. The frame dwellings were among the first of their kind to appear in an alley and served as forerunners for the frame row houses of the 1870s. During the Civil War, Snow's houses were used as army barracks and following the war Snow's alley grew at the same rapid rate as other alleys. A study in 1938 indicated a very high persistence rate, with more than half of the residents living there for more than five years.

In 1892, a prohibition on the construction of alley dwellings checked their growth. The concern with the sociological and health related problems posed by the alleys led to a wave of demolitions during the first two decades of the 20th century. A second wave of demolition occurred in the 1930s and 1940s. This attempt to remove these "mini-ghettos" from the more affluent neighborhoods of Washinton was largely successful. However, today in a few areas of the city alley dwellings continue to stand as symbols of their own curious history.

Conclusion

The Foggy Bottom Historic District is significant for its association with Washington's industrial history, its important collection of late 19th century worker housing, its association with immigrant lifestyle, and for its information on the development of urban vernacular architecture. It is an area rich in the history of an important part of our city's development, and worthy of recognition and protection as an Historic District.

410.22 If district is proposed for designation principally for its architectural significance, a description of the style or styles of architecture representative of the district and a statement of the extent of which such architectural style or styles has been maintained. (If district is proposed both for architectural and prehistoric, historic and/or cultural significance, this section may be combined with Section 410.23)

There are approximately 300 historic buildings, primarily residential structures both on the streets and along the alleys, in the Foggy Bottom Historic District. The building groupings represent general trends in style, in material, in craftsmanship, and in building type. The buildings are usually simple in presentation. Some are self-supporting single houses set in rows, others are true rowhouses. The repetition of scale, building materials, and a basic building vocabulary have produced an architecture that is cohesive throughout the district. As well, there is a liveliness to this simple architecture. The variety in ornament, both applied and integral, relieves the forms in surprising ways. Charming detailing, the interjection of ethnic stylistic forms, careful proportioning, unusual brick paneling and corbelling, and good craftsmanship provide a high level of vernacular decoration. Further, the Historic District illustrates the way that Washington's distinctive use of pressed and molded brick allowed even modest houses to have distinctive personality.

As a whole, the district presents a low-scale harmony, with rhythmic rows enlivened with eye-catching ornament. This is sometimes weakened by the interruption of contemporary large-scale buildings, but it is not broken. The even blocks of rowhouses often have a large-scale building as a backdrop. Some of the newer apartment buildings have picked up the rhythm of the surrounding streetscape, if not the scale. Many new houses repeat the scale and fenestration patterns exactly, serving to reinforce the design cohesion of the older buildings. And, the extant rowhouses run throughout the district, clearly dominating the ambience and character of the area.

THE BUILDINGS

Following are descriptions of key buildings within the Foggy Bottom Historic District. Organized by square, they are a representative sampling of the many structures that contribute to the district.

Square 17

The oldest structure extant to Square 17 is the corner structure, 2500 Eye Street. It is a most unusual house. Dated to the Civil War; it is one of the area's oldest, and has been associated with the underground railroad. Constructed of wood, it is one of only a handful of frame houses in the large Foggy Bottom area. A simple cube shape, with flat roof, the house

does not have a front door; entrance is possible from the street only through a trap door at the brick foundation. The original weatherboard siding has been covered with aluminum siding.

Four buildings, 822, 824, 826, and 828 25th Street, are individual structures built by their original owners. Each is built of brick with a flat facade. Each follows a simple facade organization using a side entry. All represent vernacular urban design built between 1874 and 1884. As a group, these four buildings present early vernacular approaches to design, when individual houses were affordable to the working class. 822 is two stories high and three bays wide. Its wooden cornice is accentuated by four decorated corbels set between dentil work. This building is the most stylistically ambitious of the group with its windows and door topped by brick lintels making reference to the Second Empire style that was popular during the 1870's. 824 was built in 1878 for Pleasant Hough, a widow engaged in sales. This brick building has been stuccoed; its ornament has been removed except for a row of modillions beneath the eaves. Two bays wide, the building is three stories high with its entryway set at ground level. 826 was constructed simultaneously with 824, and built by its owner, Michael Clancey. This building is exceedingly plain, devoid of any articulation or decoration that might distinguish it. 828 was built in 1884 by owner John Scanlan. Scanlan, a prosperous local saloon keeper, was responsible for several other houses in Foggy Bottom. This house is the smallest of this group being but two stories high and two bays wide. Its brick cornice, however, represents an interest in decorative detail that is typical of the area.

The 2500 block of Eye Street demonstrates a successful streetscape using various features typical to modest urban dwellings. Set like books between bookends, are nine rowhouses of more modest scale and decoration. Two groups of rowhouses, both built in 1911, are similar in type and proportion to each other and, following a recessed lot line, achieve a pleasant relationship to the street and to the larger houses which flank them.

2506 Eye Street is a simple, flat facade brick dwelling distinguished by a decorated cornice. Three brackets support corbelled eaves. Two bays wide with two stories plus basement, the entrance door is raised to enter on the main level. Its relationship to its neighbors a 2508 and 2504 is advantageous both in scale and in proportion, giving this ordinary building an important role in continuing the mass of the corner buildings.

Peter McCartney, Foggy Bottom's best known builder, designed and constructed 2508 Eye Street for Thomas Cahill in 1887. With a flat facade, it a simple free standing building two stories high and two bays wide. McCartney's skill with brick and wood is presented in the restrained, corbelled brick cornice and delicate jigsaw work above the windows and equally delicate attenuated columns flanking the entrance door.

2506 and 2508 form the east flank for a row of modest two story houses. The first group of the row, 2512-2518 Eye Street, was developed by owner/builder Harry Kite to the design of architect A.H. Beers. These four buildings are modest brick structures, two stories high and two bays wide

with a flat facade. Their wider proportions and simplicity place these buildings in the first years of the 20th century. They are speculative buildings designed to provide low cost shelter for the working class of Foggy Bottom. 2414-18 have received decorative ornament to their doors; a bay window has been added to the front of 2516.

A second group of speculative housing, 2520-2528 Eye Street, is composed of five rowhouses designed by Washington architect, Norman Grimm. Two-and-a-half feet wider than the similar row to the east, these houses are also slightly more ornate. The additional width allows for two windows and a door on the first floor while the upper story contains two windows. A bracketed cornice, two string cornices, and plain stone lintels give these buildings a more individualized look.

The streetscape is completed by the two attached houses at 2530-2532 Eye Street. They were designed and constructed by Peter McCartney. Two stories high and two bays wide, they achieve an imposing appearance via intricate brick cornice work. The buildings possess an unusual feature in the arched opening set into the connecting party wall that leads to the rear yards. McCartney's skill with brick is well illustrated in the arch and the cornice. The bulk of these two buildings provides a proper conclusion to the streetscape, adding definition to the building mass.

Square 5

2635-37, 2639 Eye Street, stand alone, relics of the neighborhood which thrived here in the 19th century before the highways were cut through.

2635 and 2637 were constructed in 1879 by Peter McCartney for Gilbert Gannon. Simple brick dwellings, they are two stories high and three bays wide. Completed early in McCartney's career as a builder, they do not exhibit the exuberant skill common to his later work. Instead, the buildings are elegantly proportioned. A very slight variation in the window spacing and the use of a narrow, transomed door act to widen the appearance of the facades. 2635 has undergone a careful restoration and face lifting; its facade has been replaced with new brick extending around the side party wall that was exposed with the demolition of a neighboring building.

Square 16

900-910 25th Street are six buildings which illustrate the way brick has been used in Foggy Bottom to add visual interest to modestly scaled buildings. Here, a decorative cornice is created by using bricks to simulate corbeled eaves at the cornice. This motif is used to accentuate the segmental arched windows. These small houses are two stories high and two bays wide with alternating door placement, and take on a special character due to this decorative treatment.

2503-07 I Street

A unique group of dwellings is 2503-05-07 Eye Street. Designed in 1892 by

Thomas Francis, Jr., for T.B. Harrison, they boast large projecting square bays. Their windows have been replaced. These buildings present a forthright appearance due to the massive bay and a strong vertical brick cornice.

Typical of the area is the row of dwellings along 25th Street. Of these, 912, 912-1/2, 914, and 914-1/2 is marked by the varied placement of the entrance doors. Four buildings compose the group of two story high, three bay wide dwellings. They were designed in 1887 as a speculative project of B.H. Warner and Company, and originally used as single family residences. 912 illustrates the original door location and fine proportions. An intricate stepped brick cornice crowns the group while segmental arches over the windows are accentuated by pressed brick detailing.

Designed and constructed in 1889 by a local master builder Peter McCartney, 2534 K Street is a three story brick building that was intended as a store and a single family residence. It was built for Peter McIntyre who operated his grocery store there into the 1910's and used it for his family's home. McCartney, a carpenter by trade, practiced extensively in Foggy Bottom designing and building. His work with brick exhibits a masterful control of vernacular building techniques as demonstrated in both the skill and originality. Capitalizing on the angular shape of the corner lot with strong massing, the building is sited to maximize its location. Decoration is restrained in simply detailed pressed and molded brick. String coursing, an energetically corbelled cornice of brick, and limestone segmental arched lintels in a beaded design are used across the three elevations of this free standing building. The dimensionality of the building is pleasantly enriched in the three story square bay crowned by an arched pediment that serves as the corner focus. The bay acts as a chamfer and highlights the building's position on the corner, as well as providing visual relief from the repetition of the accompanying streetscape.

949-955 26th Street represent the larger rowhouse that maintains its simple presentation. Built in 1892, two stories high on a raised basement, the buildings are three bays wide. Their ornament is restricted to integral brickwork which is used for the high cornice and to accentuate the segmental arches.

947 26th Street is a McCartney building with a full-scale octagonal bay. Very similar in ornamentation to the adjacent 1892 buildings at 949-955, this building was constructed in 1886 and appears to have served as the model for its neighbors.

A house that represents both the new and old Foggy Bottom, is 901/907 26th Street. Two brick buildings were renovated in the late 1970's as a private residence to the designs of Swaney Kerns for owner Edward Lenkin. While only the original front brick wall of one and the facades of the other building remain, the scale, material, and fenestration has been maintained. The design is innovative and perceptive, responding to the neighborhood's basic design elements. Iron work by artist Albert Paley has been integrated into the landscape, as well as for a large gate.

The Victorian Society in America

Washington Metropolitan Chapter

Oct 2 4 30 PM '85

HISTORIC PRESERVATION
DIVISION

1815A Belmont Road, N. W.
Washington, D. C. 20009
29 September 1985

Mr. James T. Speight, Jr.
Chairman
Historic Preservation Review Board
614 H Street, N. W., Room 305
Washington, D. C. 20001

ATTN: David Maloney

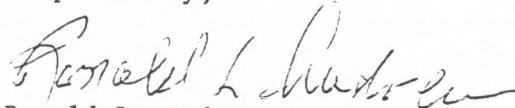
Dear Mr. Speight:

The Washington Metropolitan Chapter of the Victorian Society in America writes in support of the designation of Foggy Bottom as a historic district. Our support is for both local designation and listing in the National Register of Historic Places. We further support the establishment of the boundaries for both designations to conform with those proposed by the SHPO staff.

Foggy Bottom is an important but often over-looked historic resource in Washington. The district possess a significant and distinguishable concentration of houses that are linked historically by association with a nineteenth and early twentieth century working class ethnic neighborhood. This type of neighborhood is not commonly found in Washington as it is in other cities across the nation because Washington was not an industrial city. The buildings are also linked architecturally through design, which is simple though some have fanciful detailing; a modest scale; materials; fenestration; and setting within intact streetscapes.

Please do not hesitate to contact me should you have questions in this matter.

Respectfully,



Ronald L. Andrews
Ex Officio Member
Board of Directors

cc: Anne H. Adams

the housing shortage. These wooden row houses began to appear in large numbers and were sturdy, with fireplaces and gutters. They also offered some limited decoration. Though very simple, some had shutters, others featured decorated cornice lines. Many had small steps, small porches and a number of windows. There is little information on the actual construction of these frame dwellings. They were built on brick bases with the first floor slightly raised. They were not insulated but seem to have provided reasonable amount of protection and privacy.

The brick houses of the 1880s are the ones which exist today. They were probably built by large contractors. Hence, their design tends to be repetitious. Approximately the same size as the frame dwellings, these houses were well built, they were set on low brick bases, and were slightly raised. These houses had flat tin roofs and a good deal more decoration. Though the bricks were laid in common bond, the decorative facades rivalled those of the street houses. Some of the nicer of these houses attracted more affluent tenants as well.

Snow's Court, one of Washington's most famous inhabited alleys is within Square 28. The alley dwellings here date from the early 1880's and are very simply presented in brick. These long rows are two stories high on a raised basement, making a straight side brick stair a part of the design. Each unit is two bays wide. The only ornament original to the buildings is a corbeled cornice running along the group. The windows are segmentally arched.

The alley dwellings in Hewes Court feature two story high and two bay wide brick houses. Only portions of the original rows are extant. These buildings feature high brick corbeled cornices, more intricate than seen on many of the buildings on the streets of Foggy Bottom.

* * * * *

The many brick rowhouses that form the Foggy Bottom Historic District are artifacts of a different time. Their owners and residents were rarely people of means, but in this neighborhood they managed to develop an architecture with ornament and charm. The small scale and limited resources, in fact, served to reinforce or emphasize the adeptness of their architectural skills. The clever manipulation of brick to create satisfying decoration, their effectiveness with proportional design, and their recognition of the value of well-placed ornament worked together to produce a cohesive and pleasing visual environs. Each building, modest though it may be, adds to a contextual whole and plays an important part in the story of this neighborhood and its working class residents.

- 410.24 Attach a map showing the boundaries of the proposed or proposed amended Historic District (indicate a north arrow) together with an accurate description of those boundaries and a statement of justification for the boundaries.

Boundaries Description

The Historic District is located in Washington's northwest quadrant.

Beginning at the intersection of K and 24th Streets, proceed south along the center line of 24th Street to New Hampshire Avenue; continue southwest along the center line of New Hampshire Avenue to H Street; continue west along the center line of H Street to 25th Street; proceed north along the center line of 25th Street to the southern edge of lot 821 in Square 17; proceed west, following this lot line, and continuing along the rear lot lines of lots facing Eye Street to the eastern line of lot 832 in Square 17; continue north along the western edge of lot 832 to the center line of Eye Street; proceed west along the center line of Eye Street, maintaining this axis, cross Interstate 66, reaching Eye Street at the west side of Interstate 66, and continue west along the center of Eye Street to 27th Street; continue north along the center line of 27th Street to the northern edge of lot 811 in Square 5; proceed east along this rear lot line and continue along the rear edges of the next two lots facing Eye Street (810 and 809) and, maintaining this axis, continue east to the center line of the ramp leading from Interstate 66 to L Street; continue north along the center line of this ramp to the center line of K Street, proceed east along the center line of K Street to the starting point at the intersection of K and 24th Streets.

Boundary Justification

In 1981, a comprehensive architectural survey was conducted of the area within the boundaries of the Foggy Bottom/West End Advisory Neighborhood Commission 2A. The area surveyed (basically the area south of O Street, east of 20th Street, south of Pennsylvania Avenue, east of 15th Street, north of Independence Avenue and east of Rock Creek Park) is large and holds many historic structures. The goal of the survey was to identify and inventory all structures within the ANC boundaries which might be eligible for listing on the National Register of Historic Places. To this end, buildings were surveyed, researched and studied. Investigation into the architecture and history of the inventoried buildings provided information on the specific buildings and led to the identification of several historic themes. The area proposed here as the Foggy Bottom Historic District is based on the architectural relationship of buildings that are primarily of a similar building type and represent a specific social group and

an obtuse corner angle. By intersecting two flat planes and varying the roofs and fenestration, the building takes on an unusual character while aptly connecting the rows of housing on either street.

802 is distinguished by a first story of pointed arch windows and door. Its second story uses a simple rectangular window with peaked lintels. The cornice is articulated in projecting vertical rows of brick. At 804, an exaggerated pitched roof is punctured by two gabled dormer windows decorated with half timber. A recessed doorway and peaked lintels complete the facade. A Corbelled gable, complete with pseudo-chimney set into the mansard roof, provides a unique appearance to 806. The fenestration is particularly adept at establishing its picturesque mood: a diminutive window is set between the door and a more typical size window on the first floor. Two narrow window, placed closely together, define the second story. The fishscale tile of the roof completes the design. At 808, the mansard roof projects over the first story, and like 804, is punctured by two gabled dormer windows. A fir tree motif is created in half timber to decorate these gables. The first story is like that of 804 in organization and detailing. Keeping with the massing of 802, this building completes the group. The completing structure, 810, is a tiny rowhouse dressed as a castle. Here, the flat facade is broken at the second story by an oriel window. The window cornice is crenellated. The first floor uses a pointed arch at the windows and door. This shape is accented by molding in a contrasting color. The cross motif created in recessed brick completes the medieval castle theme.

ALLEY DWELLINGS

Foggy Bottom's vernacular architectural significance is further buoyed by the many 19th century alley dwellings that are located in Snow's Court and Hewes' Court. An alley house is a house which faces onto the alley. It is therefore distinguishable from many sheds and stables which face toward the house with which they are associated. There was some limited architectural diversity in a few alley buildings, but most followed the same plan. The standard dimensions for alley dwellings were 12' x 30' with a rear yard of 10' x 15'. Most were two stories high and had two to four rooms. The upstairs housed the usually crowded bedrooms, while downstairs, depending on the needs of the occupants, additional sleeping or living spaces could be found. The kitchen, also downstairs, served as the center of household activity. Some of the later brick dwellings boasted of basements, but this was uncommon. Other standard features included rainbarrels and water hydrants for catching water; stoves or fireplaces; and outhouses.

James Borchert, in his fine study, Alley Life in Washington, divides alley houses into four categories which essentially represent the evolution of alley construction. The first category, as mentioned above, consists of shanties and sheds. Most of the poorly constructed tiny shanties of the 1850s have long since been removed. They were probably built by migrants hoping to squat on city land. Following the Civil War, larger structures of higher quality began to appear. These building were erected by property owners and, along with existing sheds, rented out to migrants. Normally, these newer buildings had fireplaces and chimneys, but little else. The frame houses of the 1870s and 1880s were the first attempt to cash in on

the row of houses, this building presents a grander image through its massing. A central door flanked by large bays gives the building the appearance of a substantial residence. The comeliness of the rowhouses is reinforced in this building by its more sophisticated articulation.

2426-2438 Eye Street are distinct from the rest of the buildings on the square, and from each other. 2426 boasts a brownstone facade and an elegant curved bay. 2428 has been covered with clapboard and features a bold cornice and lintels.

Using a flat facade, 812-818 New Hampshire Avenue, illustrate a pleasing, commonplace approach to the urban dwelling. Each building is two bays wide, the first floor accented by a double window. Segmented arches support the openings and are highlighted by beading in pressed brick.

The 16 brick rowhouses, 801-821 25th Street and 800-810 New Hampshire Avenue, that form the southernmost group provide an excellent lesson in the value of designed variety and good proportions. Constructed in 1890 as a single group, two basic designs are skillfully articulated to create a rich streetscape. Designed by Charles Burden (the style of these buildings clearly indicates a relationship between this project and the Burdens who were responsible for 2421-27 Eye Street in 1889), these buildings use a variety of materials and forms (red brick facades, brick and iron cornices, mansard and flat roof and slate and tin) to execute a delightful ensemble of picturesque buildings. Their simple historic references to European vernacular architecture places them in a distinct category of architecture among Foggy Bottom buildings; their composition speaks of the architect's talent, their historical references establishes his academic leanings, and his combination of the two acknowledges his perspicacity. Simple flat facades buildings located at the two ends of the building groups serve to give it closure and to provide a more acceptable transition to the adjacent buildings.

The adjacent structures at 815-821 25th Street possess a look typical of Foggy Bottom. With flat facades and flat roofs, the simple two bay wide and two story high composition is relieved by brick arches and cornices. The cornice runs along all the buildings and features an evenly spaced corbelling that breaks only between 817 and 819 where the grade required.

801-813 take on a very different look from the preceding group. Designed as a group, sloping roofs, set between stylized Flemish gables define these six buildings. Peaked lintels, dormer windows and a pleasing scale give these houses a European charm. The building at 801 25th Street dominates the corner with its two-story turreted tower. A sloping slate roof accentuated the building's mass without destroying its scale.

Beginning with the unusual design of 800 New Hampshire, this row is the most highly individual of any in Foggy Bottom. Here, individuality is expressed not in the sophisticated rhetoric of the late Victorian styles, but rather as a vernacular interpretation of forms common to medieval Europe. 800 New Hampshire presents a sophisticated use of massing to turn

410.25 Include three or more contemporary photographs which show buildings, street scenes, or other views representative of the Historic District: indicate view, date of photograph and list credits, if any. 8"x10" glossy photographs are preferred. Applicant may also supply slides. (Applicant shall submit two copies of each photograph or slide.)

List of photographs attached:

- 1) 801-818 New Hampshire Avenue, N.W.
- 2) 801 25th Street, N.W.
- 3) 802 New Hampshire Avenue, N.W.
- 4) 828-838, 842 New Hampshire Avenue, N.W.
- 5) 842-44 New Hampshire Avenue, N.W.
2400-2416 Eye Street, N.W.
- 6) 2505-2507 Eye Street, N.W.
- 7) 2506, 2508, 2512-18 Eye Street, N.W.
- 8) 2530-2532 Eye Street, N.W.
- 9) 901/907 Eye Street, N.W.
- 10) 2534 K Street, N.W.
- 11) 900 block, 25th Street, N.W., looking southwest
- 12) 900 block, 25th Street, N.W., looking northeast
- 13) 822-828 25th Street, N.W.
- 14) 1-7 Snow's Court, N.W.
- 15) 900 block, 26th Street, N.W., looking north
- 17) 900 block, 26th Street, N.W., looking southwest



FOGGY BOTTOM AND WEST END
ADVISORY NEIGHBORHOOD COMMISSION
1920 G STREET, N.W., WASHINGTON, D.C. 20006 • (202) 659-0011

22 July 1986

Mr. James T. Speight
Chairman
Historic Preservation Review Board
614 H Street, N.W.
Washington, D.C. 20001

Re: Foggy Bottom Historic District application

Dear Mr. Speight:

At ANC-2A's July meeting we reviewed the status of the Foggy Bottom Historic District application. We are sorely disappointed by the Historic Preservation Review Board's inaction.

We were dismayed to note that the application was filed over 2 years ago in May 1984 after extensive survey and documentation by neighborhood volunteers working along with preservation professionals; that the public hearing was not held until 1-1/2 years later in September 1985; and that the Historic Preservation Review Board has still failed to reach a decision 10 months later in July 1986.

Several times this spring the matter was on the Board's agenda for a decision, but it was repeatedly postponed. Most recently, the Board asked its staff for another briefing on the application because so much time had elapsed since the public hearing that the Board members were not sure of certain details. Since this is not a controversial application, as documented in the record, we fail to understand why the Historic Preservation Review Board appears to be so lackadaisical in considering it. When it comes to historic preservation, there is no such thing as benign neglect.

With all due respect, your decision is long overdue. When can we expect it?

For the Commission

A handwritten signature in black ink, appearing to read "Geoffrey E. Stamm".

Geoffrey E. Stamm
Chairman



FOGGY BOTTOM AND WEST END
ADVISORY NEIGHBORHOOD COMMISSION
1920 G STREET, N.W., WASHINGTON, D.C. 20006 • (202) 659-0011

23 July 1986

Mr. Jerry L. Rogers
Associate Director, Cultural Resources
National Park Service
U.S. Department of the Interior
Room 3127 Main Interior Building
Washington, D.C. 20240

Re: Historic preservation in the District of Columbia

Dear Mr. Rogers:

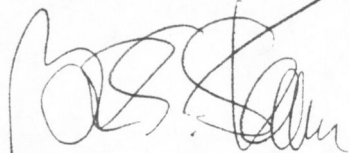
Advisory Neighborhood Commission 2A wants to call your attention to the sad state of affairs for historic preservation in the District of Columbia. In our experience, D.C.'s Historic Preservation Review Board is failing to act on historic district applications that are eligible for further nomination to the National Register, and is therefore failing to carry out its local responsibilities under the applicable Federal laws and regulations.

We are the co-applicant, along with the Foggy Bottom Association, for a Foggy Bottom Historic District, and we are attaching a copy of our letter of 22 July to the Chairman of D.C.'s Historic Preservation Review Board which outlines the chronology of the application. You will note that this application has been pending now for over 2 years, and no decision date is currently scheduled. This application is not a controversial one, yet there is no action on it. The "word on the street" is that the Mayor has stated there will be no more historic districts in the District of Columbia. We have not seen that statement in writing, but we certainly can't refute it based on our experience to date.

As you may know, advisory neighborhood commissions were created under the District of Columbia's Home Rule Charter to provide representation to residents at the grassroots level. As elected Commissioners, our mandate is to advise D.C. officials, Federal officials, and others on all matters that affect the area of the city we represent.

In that capacity, we recommend that you investigate the status of historic preservation programs in the District of Columbia. In our opinion, you should withhold further Federal funding until such time as the District of Columbia demonstrates by its actions that it is willing and able to conduct an effective program to promote local historic preservation in conformance with Federal law and regulation.

For the Commission,

A handwritten signature in black ink, appearing to read 'Geoffrey E. Stamm', written over a horizontal line.

Geoffrey E. Stamm
Chairman

Attachment

cc: Mayor Marion Barry
D.C. Historic Preservation Review Board



United States Department of the Interior

NATIONAL PARK SERVICE

P.O. BOX 37127

WASHINGTON, D.C. 20013-7127

IN REPLY REFER TO:

H32 (413)

AUG 14 1986

Mr. Geoffrey E. Stamm
Chairman
Foggy Bottom and West End
Advisory Neighborhood Commission
1920 G Street, N.W.
Washington, D.C. 20006

Dear Mr. Stamm:

Thank you for your letter of July 23, 1986, concerning the failure of the District of Columbia Historic Preservation Review Board to act in a timely manner on historic district applications. Your letter will be considered in our next review of the District of Columbia's historic preservation program. The National Park Service conducts periodic evaluations of State Historic Preservation Programs to determine whether they are in compliance with the requirements of the National Historic Preservation Act of 1966, as amended.

In the meantime, any person may appeal to the Keeper of the National Register the failure or refusal of a nominating authority to nominate a property that is believed to meet the criteria for listing in the National Register of Historic Places. The appeal should include a copy of the nomination form and documentation previously submitted to the State Historic Preservation Officer, an explanation of the reason for the appeal, and any pertinent correspondence. Once in possession of all the documentation, I will reply with my decision within 45 days.

If we can provide further information or assistance, please let us know. We appreciate your concern regarding the historic preservation programs of the National Park Service.

Sincerely,

Jerry L. Rogers
Associate Director, Cultural Resources
and Keeper of the National Register
of Historic Places



FOGGY BOTTOM AND WEST END
ADVISORY NEIGHBORHOOD COMMISSION
1920 G STREET, N.W., WASHINGTON, D.C. 20006 • (202) 659-0011

23 September 1986

Mr. Jerry L. Rogers
Associate Director, Cultural Resources
and Keeper of the National Register
of Historic Places
National Park Service
U.S. Department of the Interior
P. O. Box 37127
Washington, DC 20013-7127

Your reference: H32 (413)

Subject: Appeal - Proposed Foggy Bottom Historic District
located in Washington, D.C.

Dear Mr. Rogers:

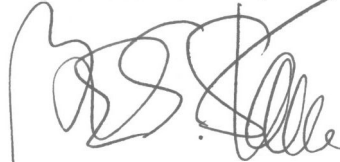
We appeal to you, as Keeper of the National Register of Historic Places, the failure of various officials of the Government of the District of Columbia to nominate the proposed Foggy Bottom Historic District for listing on the National Register of Historic Places.

We believe the the proposed Foggy Bottom Historic District meets the criteria for listing. In support of this, we enclose a copy of the nomination form and documentation submitted to the D.C. Historic Preservation Officer in May 1984; a copy of the draft staff report prepared for the public hearing which was held in September 1985; and a copy of recent correspondence on the subject which details the persistent failure of D.C. officials to act on this matter.

The staff report recommends that the proposed Foggy Bottom Historic District, with revised boundaries, be nominated to the National Register of Historic Places. We accept the revised boundaries, which are largely due to loss of contributing structures during the 2-1/3 years the D.C. officials responsible for historic preservation have neglected this nomination.

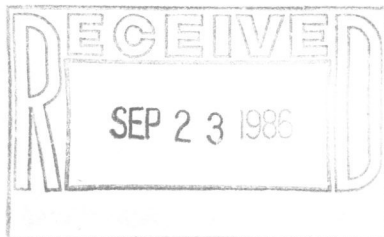
It is only out of our sincere concern for the state of historic preservation in the District of Columbia that we are taking this unusual step of a direct appeal to you. As the Chairman of the D.C. Historic Preservation Review Board has not even acknowledged our letter of 22 July in which we ask for a decision date (copy enclosed), we feel we have no other choice. We will be pleased to provide any additional information you may need to reach a decision on our appeal.

For the Commission,

A handwritten signature in black ink, appearing to read 'G. Stamm', written over a horizontal line.

Geoffrey E. Stamm
Chairman

Enclosures



OCT 31 1986

H32 (413)

Ms. Carol S. Thompson
Director, Department of Consumer
and Regulatory Affairs
614 M Street, N.W., Suite 305
Washington, D.C. 20001

Dear Ms. Thompson:

Pursuant to the National Register regulations (36 CFR Part 67.12) Mr. Geoffrey E. Stamm has appealed the failure of the District of Columbia State Historic Preservation Officer to nominate to the National Register of Historic Places the Foggy Bottom Historic District. Mr. Stamm has submitted a copy of the application form that was submitted to the D.C. State Review Board. His appeal is based on the Review Board's twice deferring action on the application.

National Register regulations (36 CFR 60.6) require that a National Register nomination form be prepared and made available to the public prior to the State Review Board meeting. Persons appealing the failure of the State to process a nomination must submit a copy of that nomination form to the Keeper. The documentation Mr. Stamm submitted as part of this appeal is not contained on a National Register form. Enclosed you will find a copy of that documentation. Please verify if this is the format used by your office in presenting nominations to the State Review Board and whether this is a copy of the application submitted to the Review Board. Please indicate whether you believe the Foggy Bottom Historic District meets the National Register Criteria for Evaluation and the opinion of the State Review Board. The minutes of the Review Board may be used to document this opinion. If you plan to nominate the district please let us know when you expect to submit the nomination.

Thank you for your assistance in this matter.

Sincerely,

/Sgd/Jerry L. Rogers

Jerry L. Rogers
Associate Director, Cultural Resources
and Keeper of the National Register
of Historic Places

Enclosure

P. Andrus 10/27/86
Shaw
70-17 86
Kest
10/28/86
Hansler
10/30

cc: Mr. Geoffrey E. Stamm
Chairman
Foggy Bottom and West End
Advisory Neighborhood Commission
1920 G Street, N.W.
Washington, D. C. 20006

bcc: 4000-MARO
400
413
Reading File
Record Center

FNP:PWA/mdj:10/23/86:343-9536

Sys. 64 (PWA/nomappeal) Thompson

Basic File Retained in 413

GOVERNMENT OF THE DISTRICT OF COLUMBIA
DEPARTMENT OF CONSUMER AND REGULATORY AFFAIRS
BUILDING AND LAND REGULATION ADMINISTRATION



DEC 9 1986

Mr. Jerry L. Rogers
Associate Director, Cultural Resources
and Keeper of the National Register
of Historic Places
United States Department of the Interior
National Park Service
P.O. Box 37127
Washington, D.C. 20013-7127

Dear Mr. Rogers:

I am responding to your letter dated October 31, 1986, regarding the nomination of the Foggy Bottom Historic District to the National Register of Historic Places.

On October 15, 1986, the D.C. Historic Preservation Review Board designated the Foggy Bottom Historic District in the D.C. Inventory of Historic Sites, and recommended that I nominate it to the National Register. The nomination form will be forwarded to your office when final revisions are made to the draft by the applicant. Among the required changes to the nomination are revisions of the boundaries which were proposed by the applicant.

Consistent with National Register regulations (36 CFR 60.6), D.C. State Historic Preservation Office procedures provide that a draft National Register nomination form be available to the public prior to the State Review Board's consideration of nominations.

Sincerely,

Carol B. Thompson
Carol B. Thompson
State Historic Preservation
Officer for the District
of Columbia

GOVERNMENT OF THE DISTRICT OF COLUMBIA
DEPARTMENT OF CONSUMER AND REGULATORY AFFAIRS
BUILDING AND LAND REGULATION ADMINISTRATION



JUN 18 1987

Ms. Carol Shull
Chief of Registration
National Register of Historic Places
National Park Service
U.S. Department of the Interior
Washington, D.C. 20240

Dear Ms. Shull:

As State Historic Preservation Officer for the District of Columbia, I am transmitting the Foggy Bottom Historic District with a determination to nominate. This property was recommended for nomination by the Historic Preservation Review Board on September 11, 1987.

There were no owner-objection letters received during the comment period.

Should you have any questions or desire clarification, please consult Stephen J. Raiche, Chief, Historic Preservation Division, on 727-7360.

Sincerely,

Carol B. Thompson
Carol B. Thompson
State Historic Preservation
Officer for the District
of Columbia

Enclosure

RECEIVED

JUN 23 1987

NATIONAL
REGISTER

JUN 19 1987

Ms. Carol Shull
Chief of Registration
National Register of Historic Places
National Park Service
U.S. Department of the Interior
Washington, D.C. 20240

Dear Ms. Shull:

As State Historic Preservation Officer for the District of Columbia, I am transmitting the Foggy Bottom Historic District with a determination to nominate. This property was recommended for nomination by the Historic Preservation Review Board on September 11, 1987.

There were no owner-objection letters received during the comment period.

Should you have any questions or desire clarification, please consult Stephen J. Raiche, Chief, Historic Preservation Division, on 727-7360.

Sincerely,

Carol B. Thompson

Carol B. Thompson
State Historic Preservation
Officer for the District
of Columbia

Enclosure

bcc: Director/Deputy Director
Administrator File
Raiche, S.
DCRA Correspondence Unit
Chron File

DCRA:BLRA:HPD:SRAICHE;sr:05/29/87:7360
EDITED:OD:bh:06/11/87

GOVERNMENT OF THE DISTRICT OF COLUMBIA
DEPARTMENT OF CONSUMER AND REGULATORY AFFAIRS
BUILDING AND LAND REGULATION ADMINISTRATION



SEP 02 1987

Ms. Carol Shull
Chief of Registration
National Register of Historic Places
National Park Service
U.S. Department of the Interior
Washington, D.C. 20240

Re: Re-submission of Foggy Bottom Historic District
Washington, D.C.

Dear Carol:

Enclosed please find the revised nomination for the Foggy Bottom Historic District. This district was designated a Landmark of the District of Columbia and was nominated to the National Register on June 18, 1987. The nomination was returned to the State Historic Preservation Officer (SHPO) on August 4, 1987 for technical corrections, as noted on the attached "evaluation/return sheet". I would like to address the concerns of your staff in the order they are presented on the sheet.

Upon recounting, the SHPO has revised the number of non-contributing buildings to 91. This figure is reflected on the form, in the text, and on the site map. Please observe that the map does not distinguish individual lot lines between adjacent non-contributing buildings, but that a detailed list of squares and street addresses is included on a continuation sheet.

An explanation of the process used to define non-contributory buildings has been included in a continuation sheet, (#7, pp. 11-12). These pages also address the integrity of the district as a whole. The map which distinguishes non-contributing from significant buildings has been clarified. Additional representative photographs of non-contributing buildings have been included.

RECEIVED

SEP 2 1987

NATIONAL
REGISTER

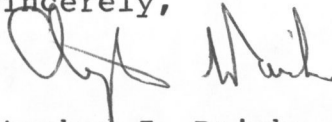
Upon reassessment, the SHPO has checked both criteria "A" and "C" as measures of the significance of the district. The nomination is made on the basis of significance of architecture and local ethnic history. The presence and significance of both qualities was noted by your staff reviewer, and both criteria should be considered in evaluating the National Register eligibility of the district.

The SHPO has, upon re-evaluation, deleted the area of significance of "industry" in the nomination. Although the Foggy Bottom area was home to a multitude of industrial workers during the period of significance, it is understood that no industrial resources are included within the nominated area. We acknowledge that the definition of significance of "industry" does not extend to the homes of workers where those structures were not directly related to the manufacturing facility.

Upon re-evaluation, the SHPO has determined that the building at 901-907 26th Street, N.W. should be classified as a non-contributing building because of the loss of architectural integrity. It is so referenced in the text and map.

Should you desire additional clarification, please call Glen Leiner on 727-7360.

Sincerely,



Stephen J. Raiche, Chief
Historic Preservation Division

Enclosure

GOVERNMENT OF THE DISTRICT OF COLUMBIA
DEPARTMENT OF CONSUMER AND REGULATORY AFFAIRS



DRAFT

FOGGY BOTTOM HISTORIC DISTRICT
Application for Designation (Designation Case #84-8)

Staff Report

After careful consideration of the application to designate the Foggy Bottom Historic District, and following further staff research, it is our recommendation that the area shown on the attached map should be designated in the District of Columbia's Inventory of Historic Sites as the Foggy Bottom Historic District, and should be recommended for nomination to the National Register of Historic Places.

* * *

Landmark designation application #84-8, submitted by the Foggy Bottom Advisory Neighborhood Commission 2-A and the Foggy Bottom Association, seeks to designate an area composed of five squares in northwest Washington as the Foggy Bottom Historic District. The area is proposed for designation as an historic district for four reasons: 1) its association with Washington's early working class; 2) its geographic and sociological relationship with one of Washington's early industrial areas; 3) its position as one of the few neighborhoods associated with European immigrants in a city noted for its relative absence of European-American communities; and 4) the value of its vernacular architecture as a representation of the resources, tastes, and aspirations of these people.

The name "Foggy Bottom" has traditionally been applied to the area of the original city of Washington bounded by the White House precinct on the east, the floodplain of the Potomac River on the south, Georgetown on the west, and Pennsylvania Avenue on the north. This name is presumed to derive both from the area's geographical situation, on swampy bottom land along the Potomac, and from its industrial activity, which compounded the natural river fogs with clouds of smoke and soot.

Historically, Foggy Bottom was divided into two sections, an upper-income residential neighborhood to the east of 23rd Street, and a working class neighborhood and industrial area to the west of 23rd Street. It is the area of the former working class neighborhood that this application addresses.

Historical Development

Soon after Washington's founding, one of the city's first industrial areas established itself along the river edge of Foggy Bottom. Among the ventures that began operations at this location were wharves, lime kilns, breweries, and a glass works. These industries were a primary determinant of the pattern of adjacent development, since they inevitably detracted from the desirability of the area for residential use.

Foggy Bottom was sparsely settled until the 1850s, when the area's population began to grow dramatically, along with that of the city as a whole. Unlike much of the city, however, Foggy Bottom began to evolve into a relatively homogeneous community composed of unskilled and working class residents. Many of these were recent European immigrants drawn by the proximity to jobs in the local industries.

The transition to an exclusively working class neighborhood paralleled an intensifying industrial use of the area. In 1856, for example, the Washington Gas Light Company established a storage and processing facility whose huge cylindrical tanks became local landmarks. By 1860, numerous other industrial establishments were in operation, including factories that produced lamp black, plaster, ammonia, and fertilizer.

After the Civil War, Foggy Bottom remained isolated from the city's growing public transportation system, and it was largely excluded from the advantages that Alexander Shepherd's public works program bestowed on much of northwest Washington. The residential neighborhood was dominated by close-knit communities of German and Irish extraction. These groups formed separate religious and social institutions, and traditionally segregated themselves even in the workplace, with the German immigrants working in the breweries, and the Irish for the Washington Gas Light Company.

The mid-nineteenth century also saw the emergence of another aspect of Foggy Bottom's physical development, the construction of alley dwellings. Alley dwellings began to appear in Washington about 1850 in response to shortages of inexpensive housing. The first alley dwellings were primarily shanties and sheds, but these were soon joined by more substantial frame and brick row houses. As the least desirable form of housing, alley dwellings were home to the city's poorest citizens, including many of the ex-slaves who migrated to the city after the Civil War.

Alley dwellings are documented in Foggy Bottom before 1860. By the end of the century, there were twelve inhabited alleys housing more than one thousand residents. The largest of these were Snow's and Green's alleys on Squares 28 and 16. Both of these retain some of their small brick houses, which are included in the proposed district.

During the twentieth century, Foggy Bottom gradually lost its industrial establishments as a result of changes in the economy, the availability of better locations elsewhere, and even the effects of prohibition. As the industries disappeared, the ethnic communities dispersed as well. Large portions of the neighborhood were eventually transformed by the construction of high-rise apartment buildings, alley parking lots, highways, and urban renewal projects.

Physical Description

The portions of nineteenth century Foggy Bottom that remain still reflect their origins in the old working class residential community. Except for a single alley warehouse and a few structures built as corner stores, only row houses survive. They form a pleasing neighborhood of modest housing, varied within a limited range of types and styles. The buildings are usually two, but occasionally three stories in height. They are primarily flat-fronted brick structures, with simple, corbelled cornices and spare ornamentation, reflecting limited circumstances.

The buildings in the proposed district date primarily from the late 1870s to the 1910s, and reflect several stages of the neighborhood's economic development and gradual maturity. The earliest houses are individually constructed row houses built for their owners. Notable among these is a group of five buildings along 25th Street, including the frame house at the corner of 25th and I, which may have been associated with the underground railroad.

The individual row houses in Foggy Bottom were later joined by small groups of two or three attached houses built by area residents on speculation. These houses exemplify vernacular urban architecture, where the builders and craftsmen were often successful members of community building in direct response to their neighbors' needs. Several houses within the district were built by Peter McCartney, for example, a carpenter whose work is distinguished by a craftsman's skill in handling unpretentious design and materials.

The long blocks of flat-fronted, two-story row houses, generally built after 1885, represent the culmination of the vernacular tradition. These rows were built as speculative ventures by such firms as Dannenhower and Sons, and B.H. Warner & Co. Within one block of each other in the Foggy Bottom district are a dozen groups of row houses, both on streets and in alleys, built in blocks of four, six, or as many as sixteen units. Although some of these are attributed to Washington architects including Albert Beers and Norman Grimm, they are for the most part simple, repetitive interpretations of a stock vocabulary of architectural forms.

Two groups of these buildings, designed and built by the Burden family, are notable for their response to the ethnic character of the community. These houses offer interpretations of European vernacular design, with bellcast roofs, lancet windows, Flemish gables, and peaked lintels. Their picturesque compositions and medieval flavor stand in strong contrast to the sophisticated bay-fronted Victorian townhouse that was typical of most of Washington at the time.

Boundaries

The application for the Foggy Bottom Historic District seeks to designate an area generally within the following boundaries:

On the north, the center line of K Street; on the east, the center line of 24th Street and New Hampshire Avenue; on the south, the center line of H Street in the 2400 block, and the rear of properties fronting on I Street in the 2500 block; and on the west, the center line of the exit ramp from Interstate 66, with an extension across Interstate 66 to incorporate the three structures at the northeast corner of 26th and I Streets.

The staff recommends that the Foggy Bottom Historic District be designated with several reductions in the proposed boundaries, for the following reasons:

- 1) At the corner of 24th and K Streets, eliminate the property at the southwest corner of the intersection, and the adjacent apartment building immediately to the west on K Street. The buildings that formerly stood at this corner have been demolished, and a new high-rise apartment building is under construction. This new building and the existing high-rise apartment building to the west are historically unrelated to the district and will contrast strongly with its predominantly two- and three-story buildings.
- 2) On the west side of the proposed district, eliminate the three structures at the northeast corner of 26th and I Streets. Interstate 66 forms a barrier that completely isolates these three structures from the remainder of the proposed district. In addition, two of the three buildings have been significantly altered.
- 3) On the west, eliminate the park land on the west side of 26th Street. All of the buildings that formerly stood on the west side of 26th Street have been demolished, and the present park area abutting Interstate 66 no longer shares a physical or functional similarity to the residential neighborhood in the proposed district.

- 4) On the west and north, eliminate all properties on Square 16 except for the properties fronting on I Street and in the southeast quadrant of the Square. The buildings in the northern part of Square 16 are high-rise apartment buildings dating from the 1950s through the 1980s. A number of nineteenth century buildings on the northwest quadrant of the Square were demolished subsequent to the filing of this application, and have been replaced by a new apartment building. The new buildings bear no historical relationship to, and contrast strongly in scale with the buildings in the proposed district.

The buildings along 26th Street and in the western half of Hughes' Court are compatible in scale with the district, but are either heavily altered nineteenth century buildings or modern structures that are unrelated to the working class housing that characterizes the proposed district.

Recommendations

The staff believes that the Foggy Bottom Historic District, as proposed in Designation Case #84-8, and with the modifications described above and shown on the attached map, qualifies as an Historic District that meets the criteria for designation adopted by the Historic Preservation Review Board. Specifically, the staff recommends that the District is worthy of designation on the District of Columbia's Inventory of Historic Sites for the following reasons:

- 1) It exemplifies significant economic, social, historical, and architectural heritage of the National Capital. Foggy Bottom is notable for its early association with the development of Washington's industrial history and with an immigrant working class lifestyle that endured into the twentieth century. The district demonstrates patterns of building, neighborhood structure, and speculative real estate development that were characteristic of many of the city's less prestigious residential areas during the latter half of the nineteenth century. As an illustration of the development of an ethnic working class community, it illuminates an unusual aspect of Washington's history not well represented by districts presently included in the Inventory of Historic Sites.
- 2) It embodies distinguishing characteristics of architectural styles and building types significant to the appearance and development of the National Capital. Foggy Bottom's row housing includes fine representative examples of vernacular architecture and craftsmanship. These structures display a

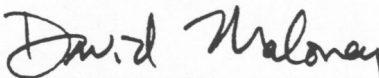
variety of individual forms, styles, and ornamental features within the overall framework of the dominant rowhouse building type of nineteenth and early twentieth century Washington. Unlike other districts included in the Inventory of Historic Sites, Foggy Bottom's housing stock is almost uniformly composed of the modest two-story dwellings built for the city's working class residents.

Further, the staff finds that the proposed district possesses sufficient integrity to convey, represent, and contain the values and qualities for which it is judged significant, and that sufficient time has passed since it achieved significance to permit its professional evaluation in its historical context.

The staff also believes that the Foggy Bottom Historic District as proposed in Designation Case #84-8, and with the modifications described above and shown on the attached map, meets the criteria of, and possesses the quality of significance present in other properties nominated to the National Register of Historic Places. The staff recommends that the Review Board recommend nomination of the National Register for the following reasons:

- 1) It is a significant and distinguishable residential neighborhood whose growth illustrates an important aspect of the social history and economic development of the Nation's Capital from the mid-19th century until World War I;
- 2) It retains significant representative examples of each period of its development, including a variety of vernacular row housing types characteristic of Washington's working class neighborhoods;
- 3) It possesses sufficient integrity of location, design, setting, materials, workmanship, feeling, and association to convey the values for which it is judged significant.

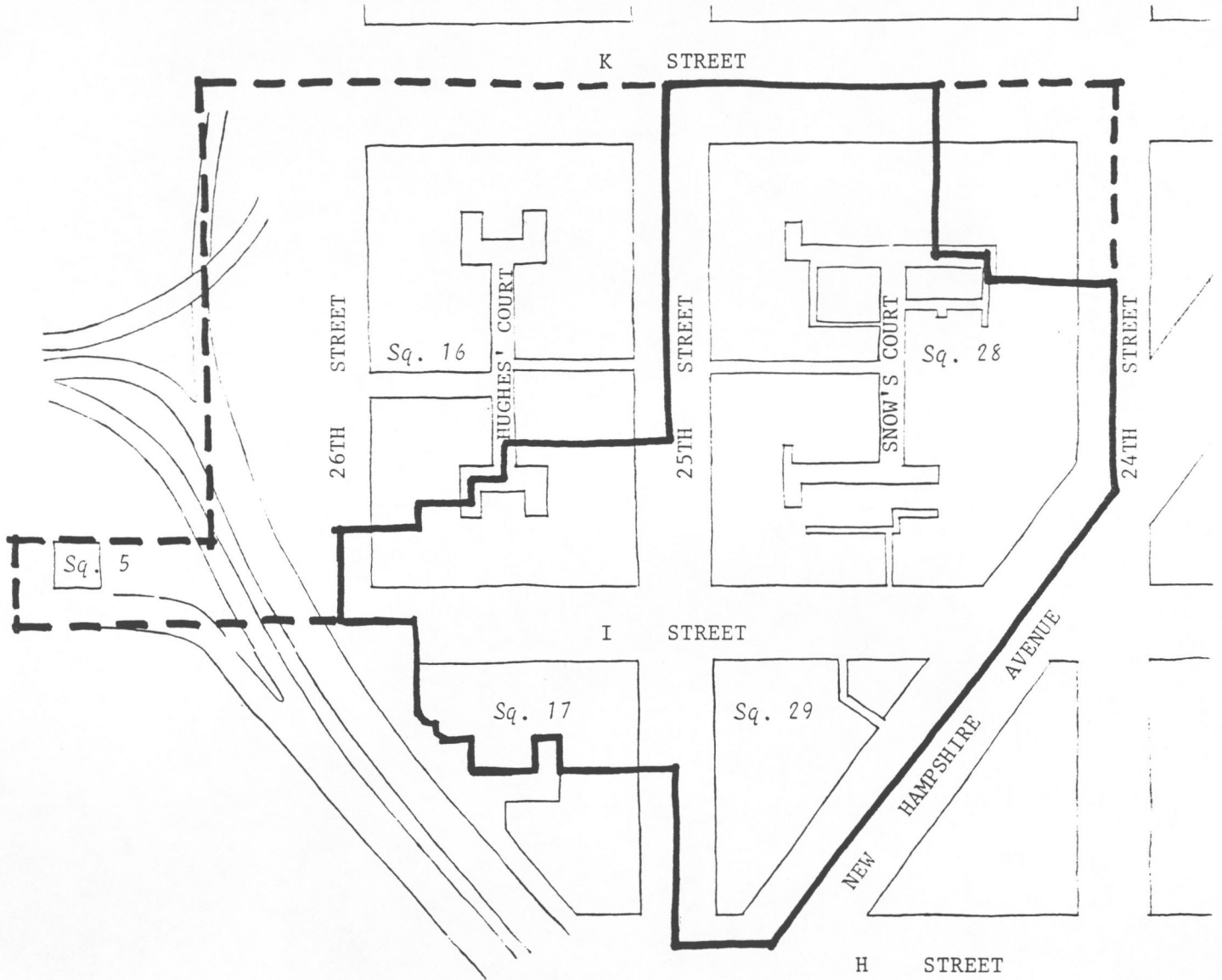
September 6, 1985



David Maloney
Architect

Suzanne Ganschinietz
Architectural Historian

FOGGY BOTTOM HISTORIC DISTRICT
Proposed Boundaries



— boundaries recommended by staff

- - - additional areas included in applicant's proposal