

United States Department of the Interior
National Park ServiceNational Register of Historic Places
Registration Form

OCT 30 1990

NATIONAL
REGISTER

This form is for use in nominating or requesting determinations of eligibility for individual properties or districts. See instructions in *Guidelines for Completing National Register Forms* (National Register Bulletin 16). Complete each item by marking "x" in the appropriate box or by entering the requested information. If an item does not apply to the property being documented, enter "N/A" for "not applicable." For functions, styles, materials, and areas of significance, enter only the categories and subcategories listed in the instructions. For additional space use continuation sheets (Form 10-900a). Type all entries.

1. Name of Property

historic name Bronson B. Tuttle House

other names/site number _____

2. Location

street & number 380 Church Street, 300 Meadow Street ☒ not for publicationcity, town Naugatuck ☒ vicinitystate CT code CT county New Haven code 009 zip code 06770

3. Classification

Ownership of Property

- ☐ private
☒ public-local
☐ public-State
☐ public-Federal

Category of Property

- ☒ building(s)
☐ district
☐ site
☐ structure
☐ object

Number of Resources within Property

Contributing	Noncontributing
<u>2</u>	<u> </u> buildings
<u> </u>	<u> </u> sites
<u> </u>	<u> </u> structures
<u> </u>	<u> </u> objects
<u>2</u>	<u> </u> Total

Name of related multiple property listing:

NANumber of contributing resources previously
listed in the National Register 0

4. State/Federal Agency Certification

As the designated authority under the National Historic Preservation Act of 1966, as amended, I hereby certify that this ☒ nomination ☐ request for determination of eligibility meets the documentation standards for registering properties in the National Register of Historic Places and meets the procedural and professional requirements set forth in 36 CFR Part 60. In my opinion, the property ☒ meets ☐ does not meet the National Register criteria. ☐ See continuation sheet.

Signature of certifying official John W. Shannahan, State Historic Preservation Officer Date 10/23/90

State or Federal agency and bureau _____

In my opinion, the property ☐ meets ☐ does not meet the National Register criteria. ☐ See continuation sheet.

Signature of commenting or other official _____ Date _____

State or Federal agency and bureau _____

5. National Park Service Certification

I, hereby, certify that this property is:

- ☒ entered in the National Register.
☐ See continuation sheet.
☐ determined eligible for the National Register. ☐ See continuation sheet.
☐ determined not eligible for the National Register.

- ☐ removed from the National Register.
☐ other, (explain:) _____

Entered in the
National RegisterAlorus Byer11/29/90

Signature of the Keeper

Date of Action

6. Function or Use

Historic Functions (enter categories from instructions)

DOMESTIC/single dwelling

Current Functions (enter categories from instructions)

GOVERNMENT/government office

7. Description

Architectural Classification

(enter categories from instructions)

LATE VICTORIAN/Queen Anne

Materials (enter categories from instructions)

foundation STONE/Sandstone

walls BRICK

WOOD/Weatherboards

roof STONE/Slate

other

Describe present and historic physical appearance.

Bronson B. Tuttle built his great brick Queen Anne house in Naugatuck in 1879-1881. (Photograph 1) For the location, he chose a site on the main street one-third of a mile north of the town green, near the Naugatuck River. (See U.S. G.S. map.) It was soon joined by other large houses to form a fine residential neighborhood. (Photograph 2) At the time, the Tuttle House and its barn and greenhouse were a domestic unit facing east toward Church Street and the Naugatuck River. (Figure 1) In the mid-20th century, the house and barn have been divided by the introduction, c. 1950, of a street (Figure 2), to the detriment of the visual unity of the complex.

The asymmetrical plan and massing of the house are characteristic of the Queen Anne style. Gabled sections project on the front and south side elevations, while a porte cochère projects on the north. Next to the porte cochère is a three-sided bay under apsidal roof. A three-story square tower with pyramidal roof is set in the southeast corner at the front of the house. The vigorous and volumetric roofs include the pyramidal shape of the tower, the gable roofs of the projecting section, the apsidal roof of the north elevation bay, and the truncated hipped roof of the main block. (Photograph 5) The basic building materials are pressed brick with narrow mortar joints and brownstone foundations and trim.

The house did have prominent wooden porches. On the front, the porch was supported by brownstone piers and square columns separated by a heavy balustrade. Paired columns flanking the entrance supported a pediment with finial. (The tower also had a finial.) The porch wrapped around to the sides. On the south, where it became two stories high, the spandrel of its shed roof was decorated with a quarter sunburst. (Photographs 1, 3)

United States Department of the Interior
National Park ServiceNational Register of Historic Places
Continuation SheetBronson B. Tuttle House
Naugatuck, CTSection number 7 Page 1

While the front and side porches are gone (Photograph 4), other highly decorative wooden trim remains in place. Radial patterns consistent with the quarter sunburst embellish the gable ends of the tower dormer and porte cochère. Other gables are covered with panels and clapboards, and the gables on all elevations have paneled and pierced bargeboards. The back porch remains intact with decorative stairs and asymmetrical roof. (Photographs 4-9)

Other decorative features abound. The foundations are quarry-faced ashlar with chiseled margins. The sills and lintels are smooth finished, the lintels being incised with a double ogee curve at the second-floor. A belt course encircles the house at the level of the second-floor lintels. Cornices are supported by modillion courses. The second-and third-floor tower windows are joined by a paneled spandrel under a molded round arch with key console. A belt course at the spring line of the arch is incised with a pattern derived from Greek triglyphs and roundels. Above the arch on the south elevation is a band of three windows. A wall dormer breaks the flared eaves on the front of the tower, while a triangular dormer on the south repeats in its arched glazing the curve of the window opening below it. The roof is covered by slate with hexagonal areas exposed to the weather. Quatre-foil-pierced terra-cotta cresting runs along the roof lines. Chimneys are paneled and corbeled, the one on the south side being turned 45 degrees.1

The entrance foyer to the Bronson B. Tuttle House at once establishes the heavy elaborate decor of the interior. The walls of the foyer are covered with an all-over pattern of partial circles bordered by anthemion, the whole executed in gold leaf. The door and window surrounds are in paneled natural-finish wood. At the tops of the paneled pilaster/jambs, carved consoles support rosettes and molded cornices, with dentil courses, that break out over the pilasters. A coved molded cornice and more gilt stenciling on the ceiling complete the foretaste of things to come in the house. (Photograph 15)

Beyond the foyer is the living hall with an elaborate carved chimney piece marking the fireplace canted at the southwest corner. This is one of half a dozen such chimney pieces, each one different, found throughout the house. The main stairway rises from the living hall. (Photograph 10) Its heavy newell has engaged colonnettes with Ionic capitals at chamfered corners, incised linear and foliate motifs, a gable-like top that frames a Gothic-arched panel, and a vigorous cap with finial. Its heavy closed-string balustrade is balanced by paneled dado along the wall. The newell rests on the bottom tread of the stair, which is large and rounded at one end. The stairwell is lighted by a skylight at the second floor (with a border

United States Department of the Interior
National Park Service

National Register of Historic Places
Continuation Sheet

Bronson B. Tuttle House
Naugatuck, CT

Section number 7 Page 2

of electric lights as an auxiliary light source) under further skylights in the attic ceiling and in the flat-roofed section of the truncated hipped roof.

The front room is, marginally, the grandest in the house. An historic photograph shows its chimney piece and gives a general sense of the furnishings. (Photograph 11) The firebox surround and the encaustic-tile hearth are similar to others in the house.² The mantel shelf here is supported by paired brackets, while above the shelf paired fluted columns on either side of the large mirror support an elaborate entablature on top of which is a gable or pediment whose tympanum carries the same motif as the similar exterior gable ends. Today, the chimney piece is well preserved, without its fender and brick-a-brac. (Photograph 12) The doorway from the front room to the living hall is fitted with five-panel sliding doors that today move at the touch of a finger. Each door measures 3'9" x 9'2". (Photograph 13) The ceiling, 11 feet high, is above a coved cornice similar to that in the foyer, and is embellished with a raised molding in the form of a mace. (Photograph 14)

On the second floor, the stairwell opens into a central hall around which are clustered the bedrooms. In the front bedroom, the chimney piece is similar to that in the room below it. The hearth, tile surround of the firebox, mantel, and over mantel are all similar but different. The radial pattern in the tympanum is the same. The attic is full height and enormous. Several cedar rooms and staff bedrooms open onto a central open space of undetermined original function. (Photograph 17) There is a copper-lined wooden cistern.

The full basement features a carved mantel in the staff dining room. Each floor of the house contains 3800 square feet. Tile around the fireplaces are from the Minton pottery in England. Bronze hardware is by Russell & Erwin of New Britain, CT. The premises, well maintained, are used as the offices of the Naugatuck Board of Education.

The greenhouse shown in the historic photograph no longer exists, but the barn remains in place. (Photograph 18) Over its brick first floor, the second floor is clapboards spaced by a pattern of horizontal and vertical plain boards similar to work found in the gable ends of the house. In the barn the effect suggests influence of the Stick style. The radial pattern in the gable ends is taken from the house gables. The entrance has been altered and the provenance of the windows is in question, but the second-floor loading doors have not been altered. Structurally, the second floor is hung from the roof framing by vertical rods in a two-tier system. The first tier of rods terminates at collar beams. A second tier of rods runs down from these beams to the members that support the floor. In the historic Photograph (Photograph 1), there is a one-story gabled projecting

United States Department of the Interior
National Park Service

**National Register of Historic Places
Continuation Sheet**

Bronson B. Tuttle House
Naugatuck, CT

Section number 7 Page 3

section on the front of the barn which is now missing, and the pitch and flare of the cupola roof match those of the tower roof of the house, no longer the case. The barn now provides quarters for the Naugatuck Senior Citizen's Center.

1Several chimneys are missing.

2The shades of the original gas lights were etched with patterns to match the tile patterns. The gas chandeliers were vented by pipes to the chimneys.

8. Statement of Significance

Certifying official has considered the significance of this property in relation to other properties:

☐ nationally ☒ statewide ☐ locally

Applicable National Register Criteria ☐ A ☐ B ☒ C ☐ D

Criteria Considerations (Exceptions) ☐ A ☐ B ☐ C ☐ D ☐ E ☐ F ☐ G

Areas of Significance (enter categories from instructions)
ARCHITECTURE

Period of Significance
1879-81

Significant Dates
1879-81

Cultural Affiliation
NA

Significant Person
NA

Architect/Builder
Robert Wakeman Hill

State significance of property, and justify criteria, criteria considerations, and areas and periods of significance noted above.

The Bronson B. Tuttle House is significant architecturally because it is an outstanding example of Queen Anne domestic architecture. It is noteworthy for the high quality of its construction materials, extensive documentation, and good state of preservation, despite the loss of its distinctive porches. The prominent location of the house at the northern end of Church Street is a lonely remaining symbol of the wealth and elegance associated with Naugatuck's turn-of-the-century period of prosperity.

Bronson B. Tuttle (1835-1903) was the son of Eben C. Tuttle, who was engaged in the manufacture of cast-iron gooseneck hoes in nearby Prospect and then Naugatuck as early as 1829. His introduction of spring steel into the gooseneck so that it "gave" was a progressive innovation that made life easier for field workers. His experience in the metal forming industry, so typical of the 19th-century history of the Naugatuck River Valley, led him into early development of malleable iron castings.

After Eben's factory burned in 1858, Bronson, backed by his father, entered into partnership with John H. Wittemore as Tuttle & Whittemore to continue and expand the manufacture of malleable iron castings. The Civil War brought a great demand for parts produced in this material, and the company prospered, becoming the Eastern Malleable Iron Company. Bronson B. Tuttle was a trustee of the Naugatuck Savings Bank from 1870, a director of the Naugatuck National Bank from its organization in 1883, and was active in the formation of the National Malleable & Steel Castings Company of Cleveland.¹

The house remained in the Tuttle family until 1935, when it was given to the Borough of Naugatuck for use for educational purposes.

9. Major Bibliographical References

"Bird's-Eye View of Naugatuck, Conn." New York: Hughes & Bailey, 1906.
Blackwell, Dana J. "The Bronson B. Tuttle House." 1980. At the house.
Centenary. Naugatuck: The Daily News, 1944.
The Citizen's Souvenir. Naugatuck, 1895.
Hill, Robert W. Drawings on linen for the Bronson B. Tuttle House, 1879.
In possession of Dana J. Blackwell.
Insurance Maps of Naugatuck, Conn. New York: Sanborn Map Company, 1931.
Ransom David F. Bronson B. Tuttle House, inventory form in Historical
and Architectural Survey of Naugatuck. 1986.

☐ See continuation sheet

Previous documentation on file (NPS):

- ☐ preliminary determination of individual listing (36 CFR 67)
has been requested
☐ previously listed in the National Register
☐ previously determined eligible by the National Register
☐ designated a National Historic Landmark
☐ recorded by Historic American Buildings
Survey # _____
☐ recorded by Historic American Engineering
Record # _____

Primary location of additional data:

- ☐ State historic preservation office
☐ Other State agency
☐ Federal agency
☐ Local government
☐ University
☒ Other

Specify repository:

Whittemore Memorial Library,
Naugatuck, CT

10. Geographical Data

Acreage of property 3.3

UTM References

A 18 662340 4595340
Zone Easting Northing

B
Zone Easting Northing

C

D

☐ See continuation sheet

Verbal Boundary Description

The nominated property is described at Naugatuck Land Records, volume 84,
page 490.

☐ See continuation sheet

Boundary Justification

The boundary of the nominated property is drawn to include the land that
has gone with the house since it was built.

☐ See continuation sheet

11. Form Prepared By

name/title David F. Ransom/Consultant, Reviewed by John Herzan, National Register
organization Connecticut Historical Commission date May 16, 1990 Coordinator
street & number 59 South Prospect Street telephone 203 566-3005
city or town Hartford state CT zip code 06106

United States Department of the Interior
National Park ServiceNational Register of Historic Places
Continuation SheetBronson B. Tuttle House
Naugatuck, CTSection number 8 Page 1

As the architect for his new house, which cost \$50,000, Bronson B. Tuttle selected Robert Wakeman Hill (1828-1909) of Waterbury, who had been an apprentice of Henry Austin (1804-1891) of New Haven. After leaving Austin's office, Hill practiced in Milwaukee, WI, before returning to Waterbury in 1858 for a long and successful career during which he designed notable buildings in Waterbury and throughout the state. Included among his works are State armories at Waterbury, New London, Bridgeport, Norwalk, and New Britain; in Waterbury, Hall Memorial Chapel at Riverside Cemetery, St. John's Parish House, and eight public schools; in Thomaston, Town Hall (the Opera House) and a Fire Station; in Litchfield, the Courthouse and Fire Station; in Winsted, the Winchester Soldier's Monument; and, in Naugatuck, the Congregational Church Parish House.

More than 100 of Hill's drawings for the Tuttle House survive. They are on linen, signed "Rob't. W. Hill, Arch't., Waterbury, 1879." Most of them are for details, some full scale. The drawings specify particulars, for instance, the woods for the chimneypieces are variously given as ash, mahogany, and oak. Accompanying notations for some features are addressed to B. B. Tuttle, for other features to Mrs. Tuttle. Apparently, there was division of labor. That the three-cornered collaboration worked well is demonstrated by the house. The vigor of the exterior massing and its fine details are matched on the interior by the complete planning of all components to contribute to an integrated ornate and elaborate effect.

While the overall style probably is best characterized as Queen Anne, there are several other contemporary influences at work. On the exterior, the incised linear and foliate decoration of the lintels is from the Neo-Grec, while the square tower suggest an Italian Villa, and the patterned woodwork in the gable ends suggests the Stick style. Although the absence of polychromy precludes application of the term High Victorian Gothic, it is nonetheless safe to say that the house could have been built only in the High Victorian era. On the interior, the carved columns and ceiling moldings reflect classical influence, while the knobby and three-dimensional carving of some of the chimneypieces suggests work associated with the name of Charles Eastlake.

1Tuttle recommended Alfred A. Pope (1842-1913) of the Cleveland Malleable Iron Company, one of the components of National Malleable, to become head of National. Pope, who later established a home (Hill-Stead) in Farmington, and Tuttle's partner, Whittemore, became important early collectors of French Impressionist paintings. Whittemore, a patron of McKim, Mead & White, introduced the architects to Pope, whose daughter, Theodate, herself an architect, collaborated with the firm in the design of Hill-Stead. Theodate drew plans for Hop Brook (public) School in Naugatuck.

United States Department of the Interior
National Park Service

National Register of Historic Places
Continuation Sheet

Bronson B. Tuttle House
Naugatuck, CT

Section number Photos Page

Photographs were taken, or copied, by David F. Ransom in March 1990.
Negatives are on file at Connecticut Historical Commission.

Photograph 1
Historic photograph,
house and barn
View northwest

Photograph 2
Detail of Hughes & Bailey
1906 Bird's-Eye View
View northwest

Photograph 3
Historic photograph,
front elevation
View west

Photograph 4
View northwest

Photograph 5
South elevation, view
north

Photograph 6
Roof line, view north-
west

Photograph 7
View northeast

Photograph 8
View southeast

Photograph 9
View southwest

Photograph 10
Main stairway
View southwest

Photograph 11
Historic photograph
front room chimney-
piece
View northeast

Photograph 12
Front room chimneypiece
View northeast

Photograph 13
Doors between front room
and living hall
View west

Photograph 14
Front room ceiling
View southwest

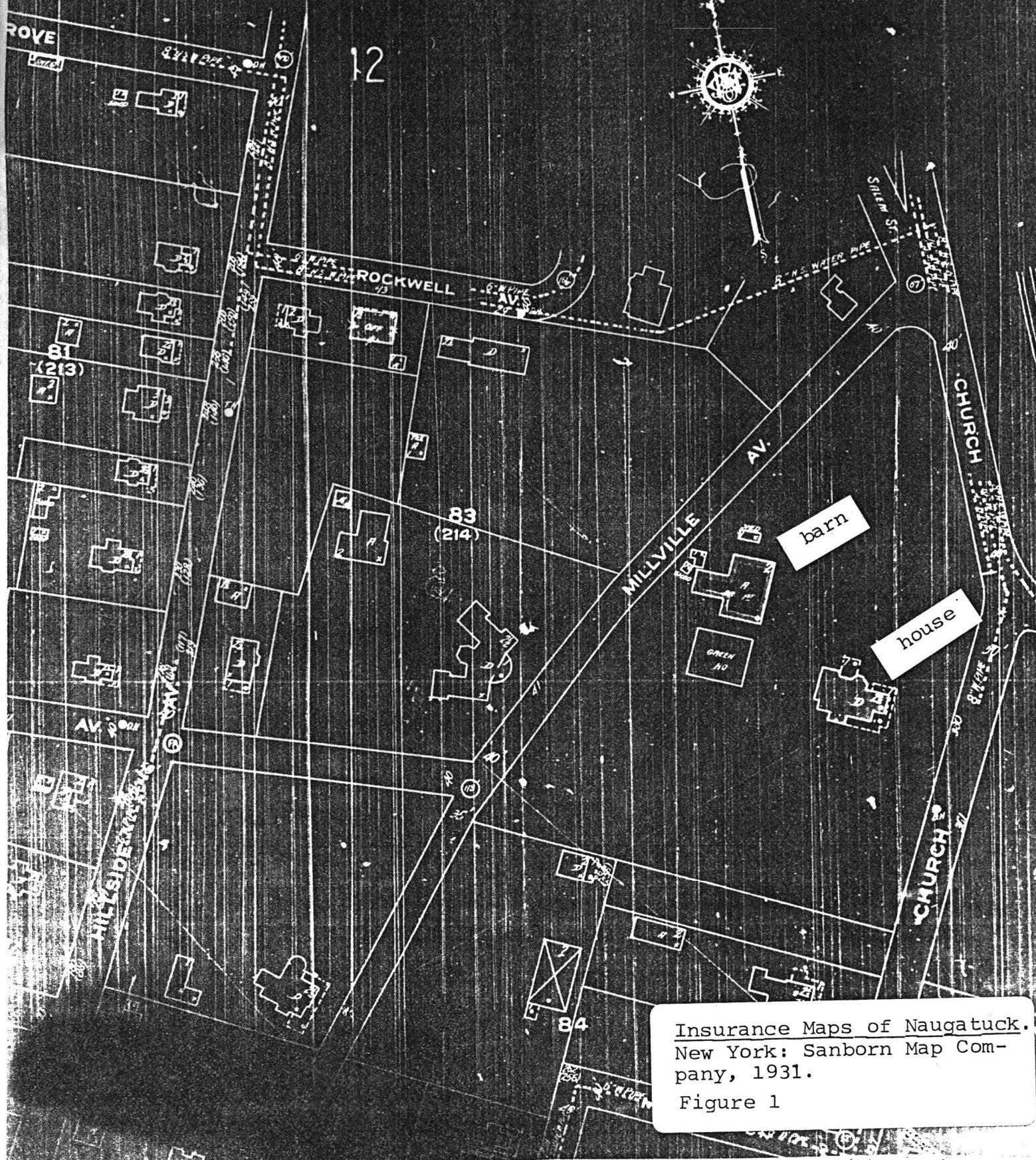
Photograph 15
Foyer
View southwest

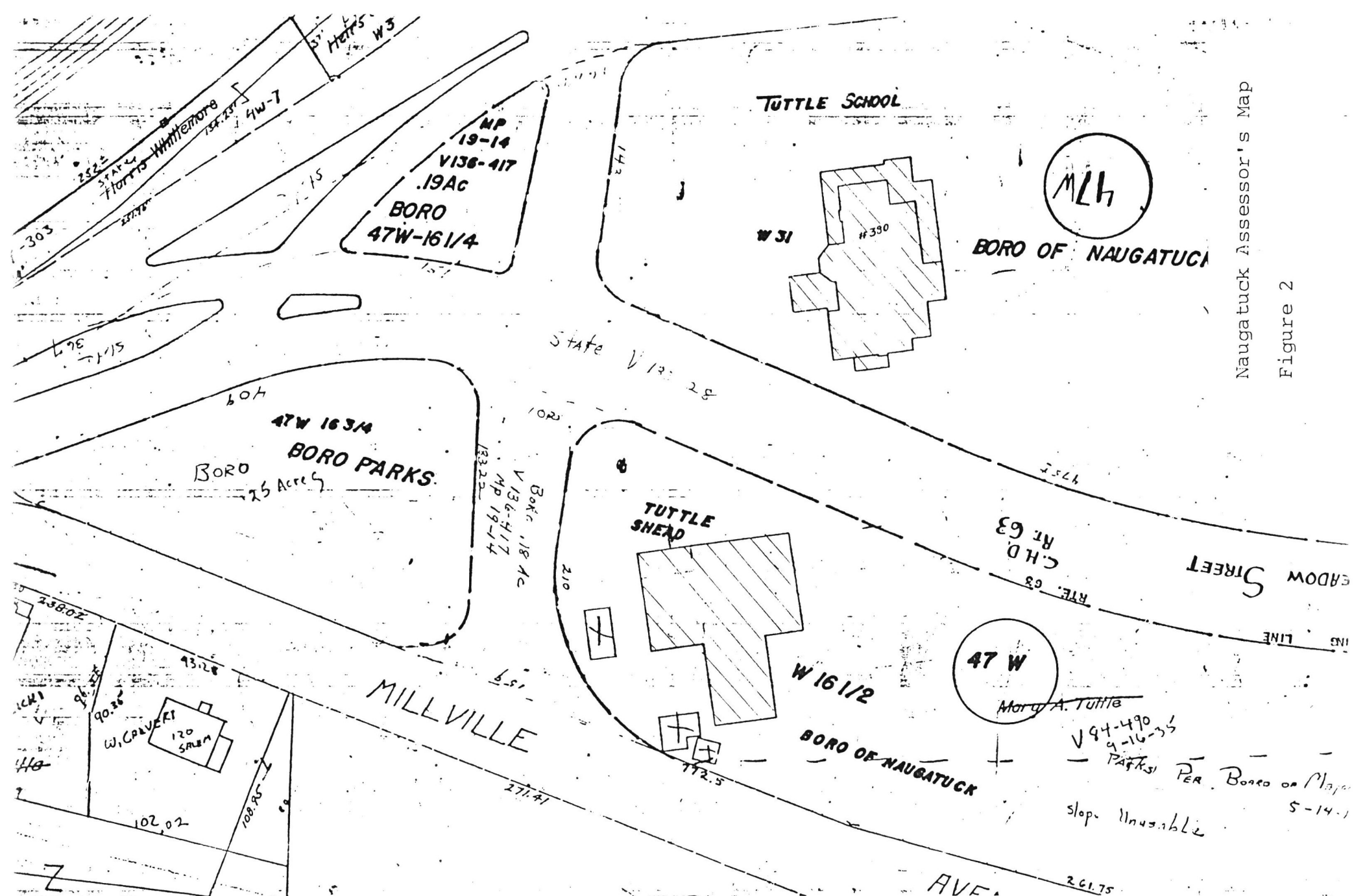
Photograph 16
Second floor, front
bedroom
View northeast

Photograph 17
Attic
View west

Photograph 18
Barn
View southwest

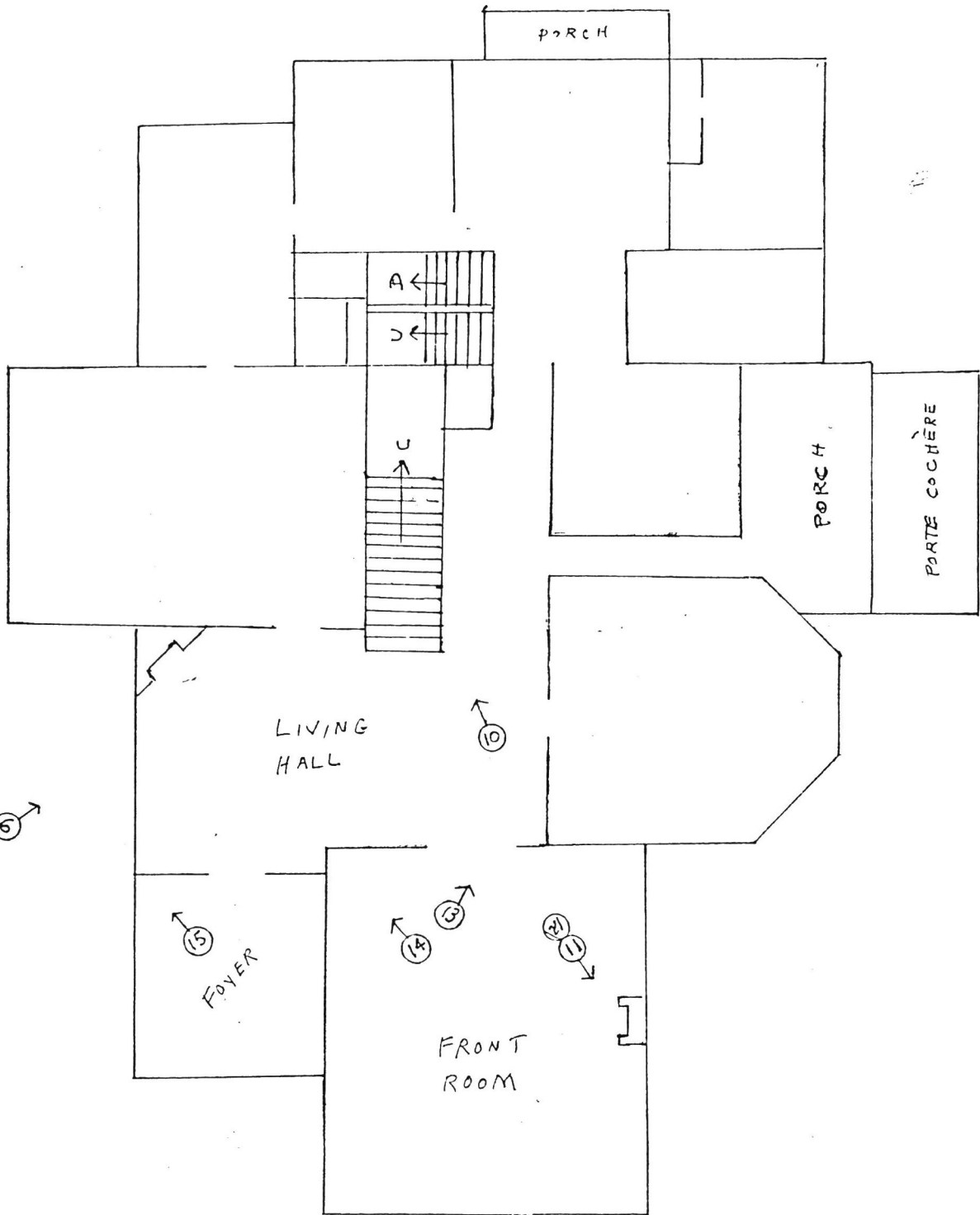
SCALE 100 FT TO AN INCH





① ↙

↙ ⑧



B.B. Tuttle House
Naugatuck, CT

Photo Key
Scale: 1" = 12'

↙ ⑨

→ Z

UNITED STATES DEPARTMENT OF THE INTERIOR
NATIONAL PARK SERVICE

NATIONAL REGISTER OF HISTORIC PLACES
EVALUATION/RETURN SHEET

REQUESTED ACTION: NOMINATION

PROPERTY Tuttle, Bronson B., House
NAME:

MULTIPLE
NAME:

STATE & COUNTY: CONNECTICUT, New Haven

DATE RECEIVED: 10/30/90 DATE OF PENDING LIST: 11/13/90
DATE OF 16TH DAY: 11/29/90 DATE OF 45TH DAY: 12/14/90
DATE OF WEEKLY LIST:

REFERENCE NUMBER: 90001803

NOMINATOR: STATE

REASONS FOR REVIEW:

APPEAL: N DATA PROBLEM: N LANDSCAPE: N LESS THAN 50 YEARS: N
OTHER: N PDIL: N PERIOD: N PROGRAM UNAPPROVED: N
REQUEST: N SAMPLE: N SLR DRAFT: N NATIONAL: N

COMMENT WAIVER: N

☒ ACCEPT ☐ RETURN ☐ REJECT 11/29/90 DATE

Entered in the
National Register

ABSTRACT/SUMMARY COMMENTS:

RECOM./CRITERIA_____
REVIEWER_____
DISCIPLINE_____
DATE_____

DOCUMENTATION see attached comments Y/N see attached SLR Y/N

CLASSIFICATION

___count ___resource type

STATE/FEDERAL AGENCY CERTIFICATION

FUNCTION

___historic ___current

DESCRIPTION

___architectural classification
___materials
___descriptive text

SIGNIFICANCE

Period Areas of Significance--Check and justify below

Specific dates Builder/Architect
Statement of Significance (in one paragraph)

___summary paragraph
___completeness
___clarity
___applicable criteria
___justification of areas checked
___relating significance to the resource
___context
___relationship of integrity to significance
___justification of exception
___other

BIBLIOGRAPHY

GEOGRAPHICAL DATA

___acreage ___verbal boundary description
___UTMs ___boundary justification

ACCOMPANYING DOCUMENTATION/PRESENTATION

___sketch maps ___USGS maps ___photographs ___presentation

OTHER COMMENTS

Questions concerning this nomination may be directed to

_____ Phone _____

Signed _____ Date _____





















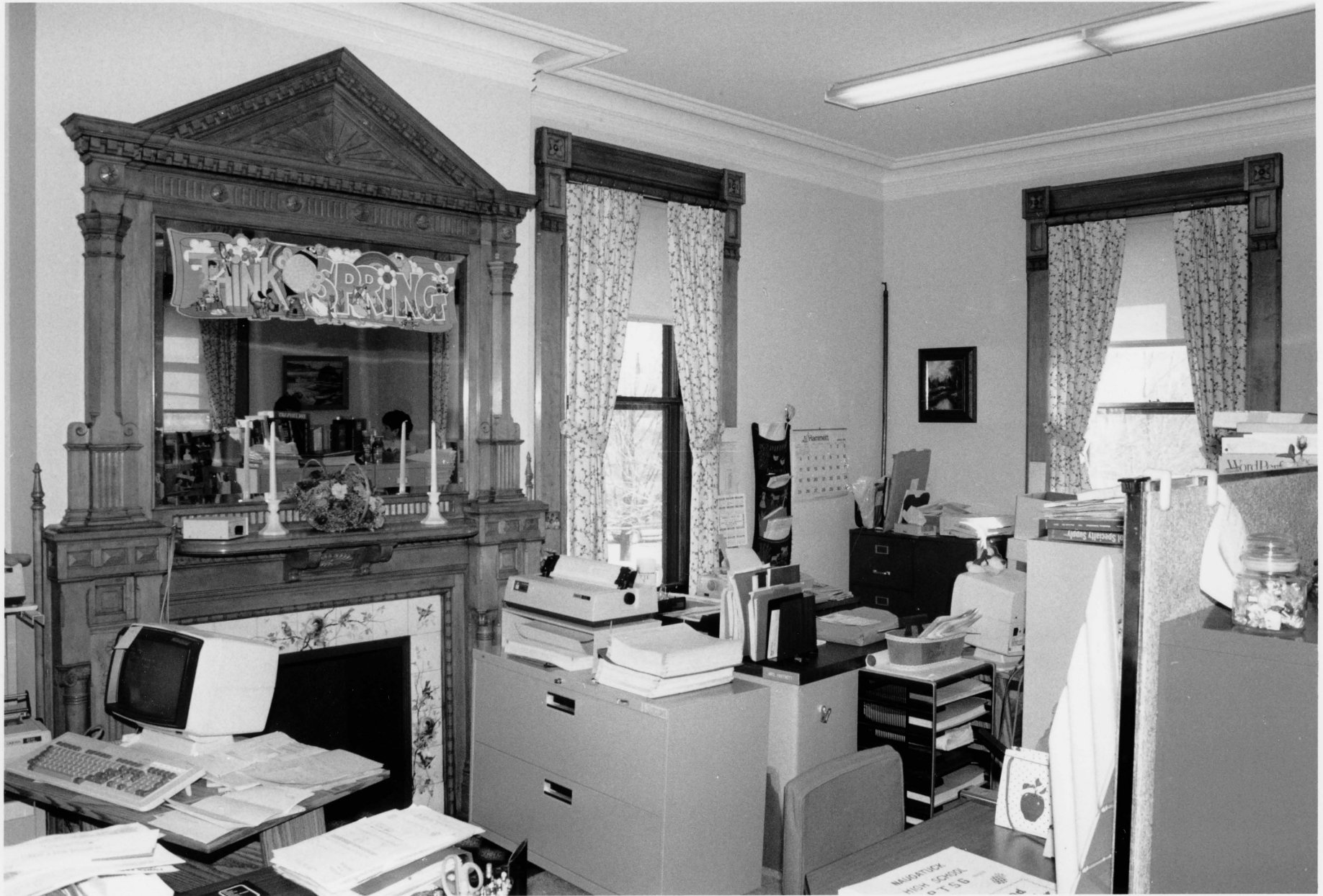










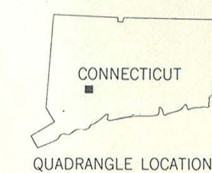
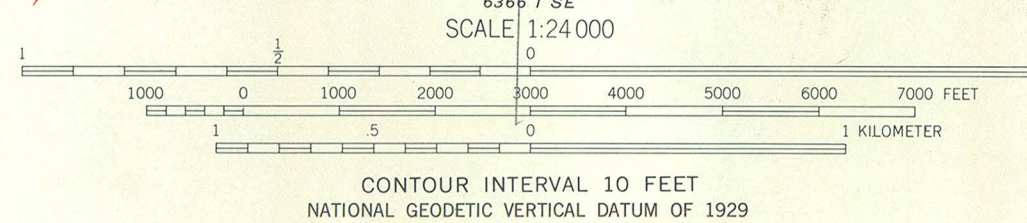
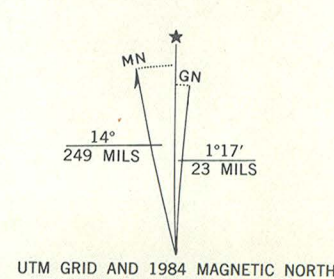








Mapped, edited, and published by the Geological Survey
Control by USGS, NOS/NOAA, and Connecticut Geodetic Survey
Topography by photogrammetric methods from aerial photographs
taken 1949 and 1950. Field checked 1954. Revised 1964
Polyconic projection. 10,000-foot grid ticks based on Connecticut
coordinate system
1000-meter Universal Transverse Mercator grid ticks,
zone 18, shown in blue
1927 North American Datum
To place on the predicted North American Datum 1983
move the projection lines 5 meters south and
37 meters west as shown by dashed corner ticks
Fine red dashed lines indicate selected fence and field lines where
generally visible on aerial photographs. This information is unchecked
Red tint indicates areas in which landmark buildings are shown
There may be private inholdings within the boundaries of
the National or State reservations shown on this map



ROAD CLASSIFICATION
Heavy-duty ——— Light-duty ———
Medium-duty ——— Unimproved dirt ———
○ State Route

THIS MAP COMPLIES WITH NATIONAL MAP ACCURACY STANDARDS
FOR SALE BY U.S. GEOLOGICAL SURVEY, RESTON, VIRGINIA 22092
A FOLDER DESCRIBING TOPOGRAPHIC MAPS AND SYMBOLS IS AVAILABLE ON REQUEST

Revisions shown in purple and woodland compiled in cooperation
with State of Connecticut agencies from aerial photographs taken
1982 and other sources. This information not field checked
Map edited 1984

NAUGATUCK, CONN.
41073-D1-TF-024

1964
PHOTOREVISED 1984
DMA 6366 I NE-SERIES V816