

1048

United States Department of the Interior
National Park Service

JUL 05 1989

National Register of Historic Places
Registration Form

NATIONAL
REGISTER

This form is for use in nominating or requesting determinations of eligibility for individual properties or districts. See instructions in *Guidelines for Completing National Register Forms* (National Register Bulletin 16). Complete each item by marking "x" in the appropriate box or by entering the requested information. If an item does not apply to the property being documented, enter "N/A" for "not applicable." For functions, styles, materials, and areas of significance, enter only the categories and subcategories listed in the instructions. For additional space use continuation sheets (Form 10-900a). Type all entries.

1. Name of Property

historic name Campbell Union High School District
other names/site number n/a

2. Location

street & number 1 West Campbell Avenue n/a not for publication
city, town Campbell n/a vicinity
state California code CA county Santa Clara code 085 zip code 95008

3. Classification

Ownership of Property	Category of Property	Number of Resources within Property	
<input type="checkbox"/> private	<input checked="" type="checkbox"/> building(s)	Contributing	Noncontributing
<input checked="" type="checkbox"/> public-local	<input type="checkbox"/> district	<u>3</u>	<u>0</u> buildings
<input type="checkbox"/> public-State	<input type="checkbox"/> site	<u> </u>	<u> </u> sites
<input type="checkbox"/> public-Federal	<input type="checkbox"/> structure	<u> </u>	<u> </u> structures
	<input type="checkbox"/> object	<u> </u>	<u> </u> objects
		<u>3</u>	<u>0</u> Total

Name of related multiple property listing: n/a
Number of contributing resources previously listed in the National Register 0

4. State/Federal Agency Certification

As the designated authority under the National Historic Preservation Act of 1966, as amended, I hereby certify that this nomination request for determination of eligibility meets the documentation standards for registering properties in the National Register of Historic Places and meets the procedural and professional requirements set forth in 36 CFR Part 60. In my opinion, the property meets does not meet the National Register criteria. See continuation sheet.

Signature of certifying official *Rachyn Gualtieri* Date 6-26-89

State or Federal agency and bureau _____

In my opinion, the property meets does not meet the National Register criteria. See continuation sheet.

Signature of commenting or other official _____ Date _____

State or Federal agency and bureau _____

5. National Park Service Certification

I, hereby, certify that this property is:

entered in the National Register. *Amy Schlagel* 8/17/89
 See continuation sheet.

determined eligible for the National Register. See continuation sheet.

determined not eligible for the National Register.

removed from the National Register.

other, (explain:) _____

Signature of the Keeper _____ Date of Action _____

6. Function or Use

Historic Functions (enter categories from instructions)

Education/school

Current Functions (enter categories from instructions)

Education/college

"Work in Progress"

7. Description

Architectural Classification

(enter categories from instructions)

Mission/Spanish Colonial Revival

Materials (enter categories from instructions)

foundation concrete

walls stucco

roof terra cotta

other wood

ceramic tile

Describe present and historic physical appearance.

The Campbell Union High School Historic District is located on 3.5 acres at the southeast corner of the 30.743-acre City of Campbell Community Center. Constructed between 1936-38, the district constitutes a highly visible community focal point, directly across a central intersection from the 1922 Campbell Union Grammar School. The three buildings comprising the district embody the original Campbell Union High School complex as conceived of, and designed by, the community and the architects. The complex later grew to include 19 other buildings constructed between 1938-58. The Campbell Union High School Historic District possesses historic integrity in relationship to location, design, setting, materials, and workmanship. Presently being leased for use as a community college, the District also preserves integrity of feeling and association. Buildings of later construction, not part of the original complex design, have been modified or altered and now serve as non-related Community Center facilities. The following properties contribute to the District:

Academic Classroom Building (1936)

Spanish Colonial Revival. One-story, semi-rectangular ten-room unit with two projecting bays at northeast and southeast corners. Wood frame with stucco siding, concrete foundations, and terra cotta hipped roof. Four entrances, framed by rectangular pilasters with double pine doors, projecting brick bases and steps, located at northwest corner, southeast bay, south and west facades. Arcaded porch with wrought iron fencing and quarry tile floors leads west to Administration Building. Shallow lintel-type 3-paned windows on east, north, and west walls. Decorative, hand-painted ceramic tile bands and curvilinear panels. Central interior corridor, with classrooms to north, east, and west. Roof skylights of wire-reinforced glass. Linoleum covered hardwood floors. Original heating/lighting systems upgraded in 1961; steam heat renovated to heat pumps in 1986. Roof replaced also in 1986. 11,461 square feet.

Administration Building (1938)

Spanish Colonial Revival. Two-story asymmetrical, wood frame with stucco siding, concrete foundations, terra cotta tiled, hipped roof and molded cornices at eaves. Central rectangular space intersected by projecting wings at northeast, northwest, and southwest corners. Small, rectangular bay near southeast corner. Four square recessed entrances with double wood doors, flattened rectangular pilasters, brick steps, and bases. Four-paned shallow, lintel-type windows in double rows. Decorative, hand-painted ceramic tile bands on pilasters and in horizontal detached-square inlay above south entrance. Iron balcony on southeast second-story window. Interior features include stairwells at ends of east-west corridor, hardwood floors, and wired glass roof skylights. Ten classrooms, two toilets, three offices, and four storage rooms on first floor. Seven classrooms, one office, and three storage rooms on second floor. Aluminum frames replaced wood framing and glass on some windows. 24,200 square feet.

 See continuation sheet

United States Department of the Interior
National Park Service

National Register of Historic Places
Continuation Sheet

Section number 7 Page 2 Campbell Union High School District

Auditorium (1938)

Spanish Colonial Revival. Rectangular, one-to-three stories. Cement plaster-sided wood frame with concrete foundation. Terra cotta tiled, hipped roof; molded cornices below eaves. Arcaded, quarry-tiled porch with square gabled, brick-stepped entry on southeast corner front. Straight, lintel-type windows. Rectangular pilasters framing square entrances. Decorative ceramic tiles highlighting pilasters and cornices. Raised/molded gable fronting flat roof area at south entrance. Entrance features three square, recessed lintel-type doorways; wood doors with double, 10-paned glass insets and window transoms. Decorative plaster urns on projecting stepped brick bases. Decorative plaster grillwork. Metal decked and reinforced open exterior staircase on west side. Interior features include open beam wood ceilings; corbelled/interfaced with hand-painted fibre celtex panels; brass/glass chandeliers; ornate plaster panels; hardwood flooring; balcony; lobby; stage with square proscenium arch and three-story fly lift; two toilets; heater/boiler apparatus room and dressing room. Stairwells at east-west ends of lobby. Building has been altered. In 1947, the emergency exit along west wall was installed. Minor alterations to install a sprinkler/intrusion alarm system and to upgrade interior lighting system were also performed with minimal impact. Interior ceiling trusses were damaged by cracking, and, in 1982-83, eight plywood pillar supports were installed through rectangular holes cut into the trusses, to counteract and offset the sagging. Front central aisle seating and twelve ceiling panels were also removed. Trusses were rebuilt in 1985, after installation of a cable support. 9,614 square feet.

8. Statement of Significance

Certifying official has considered the significance of this property in relation to other properties:

nationally statewide locally

Applicable National Register Criteria A B C D

Criteria Considerations (Exceptions) A B C D E F G

Areas of Significance (enter categories from instructions)

Architecture
Education

Period of Significance

1936-38

Significant Dates

n/a

Cultural Affiliation

n/a

Significant Person

Architect/Builder

Weeks, William H. (Academic Classroom)
Weeks, Harold H. and William H.

State significance of property, and justify criteria, criteria considerations, and areas and periods of significance noted above.

The Campbell Union High School District is comprised of three historic structures constructed between 1936-38, which embody the original High School complex as envisioned by the community and designed by the architects. The educational buildings within the district are significant under criteria "a" and "c", as successful examples of Spanish Colonial Revival architecture, prevalent in the early 20th century, and as designed and constructed by William H. Weeks, well-known throughout the State of California for his school and library architecture. Campbell Union High School was the second high school erected in Campbell, serving as its only secondary institution until after World War II.

Architectural Significance

The Campbell Union High School was designed by the award-winning firm of William H. and Harold H. Weeks (the Academic Classroom was designed by William Weeks alone). "Weeks was best known, and respected, for his innovative design of school buildings, especially in the 1920s and early 1930s. These buildings encompassed high engineering standards and many safety features plus attractive exteriors and very functional interiors."*

William H. Weeks was born in 1864, and began his design career in 1892. The young architect was commissioned for the design of homes and buildings throughout Watsonville, Salinas, Monterey, Pacific Grove, and Hollister in the late 1800s, developing a reputation for creative and esthetically functional designs which gradually spread beyond the central coast area into other parts of California. By the late 1910s, Weeks was known to have designed over 500 buildings, from as far north as Crescent City to as far south as Santa Barbara. He developed a specialty in schools and libraries, becoming known for sound and safe construction. Many of Weeks' schools are still standing and in use today, including Los Gatos, Fremont, Napa, and Bishop High Schools, and the Campbell Union Grammar School (rehabilitated for commercial use in 1985).

9. Major Bibliographical References

Unpublished materials (copies at the City of Campbell Historical Museum).

"Outline of specifications and Final Report, Project #1132, School Building." Federal Emergency Administration of Public Works to Campbell Union School District, October 7, 1936."

"Field Report to Campbell Union School District" (construction of auditorium and administration buildings). March 23, 1937.

"Campbell High School Site: An Evaluation and Appraisal." Clevinger Realty Appraisal Corporation, Santa Clara, CA: 1979.

Bondi, John C., "The Campbell Community Center Auditorium." San Jose, CA: Foxcorp-California, Inc., 1982.

See continuation sheet

Previous documentation on file (NPS):

- preliminary determination of individual listing (36 CFR 67) has been requested
- previously listed in the National Register
- previously determined eligible by the National Register
- designated a National Historic Landmark
- recorded by Historic American Buildings Survey # _____
- recorded by Historic American Engineering Record # _____

Primary location of additional data:

- State historic preservation office
- Other State agency
- Federal agency
- Local government
- University
- Other

Specify repository:

_____ City of Campbell Historical Museum

10. Geographical Data

Acreage of property 3.5 acres

UTM References

A

1	0
---	---

5	9	3	0	9	1
---	---	---	---	---	---

4	1	2	7	0	7	6
---	---	---	---	---	---	---

Zone Easting Northing

B

1	0
---	---

5	9	3	0	9	1
---	---	---	---	---	---

4	1	2	7	0	7	6
---	---	---	---	---	---	---

Zone Easting Northing

C

1	0
---	---

5	9	3	0	9	1
---	---	---	---	---	---

4	1	2	7	0	7	6
---	---	---	---	---	---	---

D

--	--

--	--	--	--	--	--

--	--	--	--	--	--	--

See continuation sheet

Verbal Boundary Description

The boundary of the nomination is shown as the black-line rectangle on the accompanying map, at the intersection of Campbell Avenue and Winchester Boulevard, drawn on a scale of 1" = 150'.

See continuation sheet

Boundary Justification

The nominated property includes the three buildings in the district and their immediate 3.5-acre setting. These three buildings comprise the original Campbell Union High School.

See continuation sheet

11. Form Prepared By

name/title Peggy Coats, Historical Resources Supervisor
 organization City of Campbell date 20 September 1988
 street & number 70 N. First Street telephone (408) 866-2118
 city or town Campbell state CA zip code 95008

**United States Department of the Interior
National Park Service**

**National Register of Historic Places
Continuation Sheet**

Section number 8 Page 2

Harold Weeks joined his father's firm in a partnership in 1924, and a branch office was opened in San Jose in 1926. The Campbell Union High School was one of William Weeks' final designs, prior to his death in 1936. His son took over the company, and implemented William's original plans, assisting with final design on the Auditorium and Administration buildings. Harold continued the firm, under his own name, until his death of a heart attack in 1948.

The Campbell High School complex is one of only two non-residential examples of the Spanish Colonial Revival style in Campbell. It is the only example of a 1930s WPA project executed in this style, showing elements of modern leanings in its spare and clean appearance.

All buildings in the high school complex are visually impressive structures, displaying this pleasing integration of Spanish Colonial Revival architectural form and subdued ornamentation favored by Weeks in his designs during this period. Open grillwork on the Auditorium's arched front windows, and colorful, hand-painted decorative tiles are present as embellishments on all three buildings. Intricate geometric designs form a mosaic across the upper surface of projecting bays and pilasters, displayed as broad horizontal bands. In addition, a curvilinear panel is inset above, or near, all entrances to the buildings. The tiles, brilliantly colored in shades of coral, sea-green, indigo, and bright yellow, were created by Solon and Larkin Company. Albert Solon, along with partner Frank P. Schemmel, founded the art tile business, based in San Jose, in the early 1920s. Solon was a ceramics instructor at the San Jose State Normal School (now San Jose State University). He came from a family of tile makers in Europe. His father, L. M. Solon, won the grand award for ceramics at the 1878 Paris Exposition. The firm also made similar artistic tiles for Hearst Castle in San Simeon, and the Steinhart Aquarium and Mark Hopkins Hotel in San Francisco.

The Campbell Union High School District was organized, and formed its first class, in 1900. The school was housed on the upper floor of the Campbell Grammar School until 1904, when the first high school building was constructed on the southeast corner of Winchester Boulevard and Campbell Avenue. Built with the aid of WPA funds over a period of two years, Campbell Union High School was the second high school building erected in Campbell, and is located diagonally across the street from the first site. The first high school building is no longer standing.

**United States Department of the Interior
National Park Service**

**National Register of Historic Places
Continuation Sheet**

Section number 8 Page 3

The construction of the complex represented growth and expansion to the community, whose children had attended schools within the separate districts of San Tomas, Meridian, Hamilton, and Campbell since the late 1800s. With the influx of post-World War II settlers into Santa Clara County, the High School District began to expand in earnest, and by 1978 consisted of nine high schools. The Campbell Union High School complex, however, served as the only high school in Campbell for over 25 years. Although it was closed due to declining enrollment in 1980, it is still considered in the minds of many to be "the" high school in Campbell.

Former graduates of Campbell High School who have gone on to greater achievements on a state or national level include Dudley Herschbach (Nobel prize winner in Chemistry); Emil Mrak (former Chancellor, University of California, Davis); Phillip Farley (U.S. Representative to NATO); C. Erwin Righter (U.S. Olympic Rugby Team, 1920); Craig Morton (NCAA all-American and National Football League, Dallas and Denver), and Russ Camilleri (U.S. Olympic team wrestler, 1960, 1964, and 1968).

*Betty Lewis, W. H. Weeks, Fresno, CA: Panorama West Books, 1985, p. 10.

United States Department of the Interior
National Park Service

National Register of Historic Places
Continuation Sheet

Section number 9 Page 2 Campbell Union High School District

Unpublished Materials, continued

Miskulin, George F. "A History of the Campbell Union High School District". San Jose, CA: Campbell Union High School District, 1988.

Johnson, Desmond. "Campbell Union High School: An Appraisal". San Jose, CA: Desmond Johnson, April 7, 1983.

Published Materials

Downs, Winfield Scott. "William H. Weeks". Encyclopedia of American Biography. New York, NY: American Historical Society, Inc., 1937.

Gebhard, David. "The Spanish Colonial Revival in California". Journal of the Society of Architectural Historians. Media, PA: Society of Architectural Historians, May 1967.

Lewis, Betty. "William H. Weeks, Architect of the Plain Citizen". California Historical Courier. San Francisco, CA: California Historical Society, July 1978.

_____, _____. W.H. Weeks. Fresno, CA: Panorama West Books, 1985.

Loomis, Patricia. "The Famous Tiles at Campbell High." San Jose Mercury News. San Jose, December 6, 1979.

Martin, Don. "Completion of New High School Assured by Bonds". Campbell Press. Campbell, CA: June 10, 1937.

Rita, Terry, editor. Campbell High School: 1900-1980. Campbell, CA: Oriole Press, 1980.

United States Department of the Interior
National Park Service

National Register of Historic Places
Continuation Sheet

Section number _____ Page _____ Photo Log

Campbell Union High School District
1 W. Campbell Avenue
Campbell, CA 95008

Photographic Key Listing

All photographs are 5" x 7" black and white, printed on fiber-based paper, and depict buildings within the proposed district. Negatives for all photographs are at the Campbell Historical Museum, c/o City of Campbell, 70 N. First Street, Campbell, CA 95008.

Aerial Views

1. South (front) facade, c1950s, photographer unknown
2. North (rear) facade, c1950s, photographer unknown

Academic Classroom Building, Building #1, Sketch Map

3. South (front) facade, 1986, photographer: John Hardee
4. Northwest (corner/side) facade, 1986, photographer: John Hardee
5. Southwest (corner/side) facade, 1986, photographer: John Hardee
6. South, connecting corridor to Administration Building, 1988, photographer, Peggy Coats

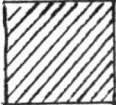
Administration Building, Building #2, Sketch Map

7. South (front) facade, 1938, photographer unknown
8. South (front) facade, 1986, photographer: John Hardee
9. Southwest (corner/side) facade, 1986, photographer: John Hardee
10. Detail, balcony window, south facade, 1986, photographer: John Hardee

Auditorium, Building #3, Sketch Map

11. South (front) facade, 1938, photographer unknown
12. South (front) facade, 1988, photographer: Peggy Coats
13. Southeast (side/corner) facade, 1988, photographer: Peggy Coats
14. Northeast (rear/corner) facade, 1988, photographer: Peggy Coats

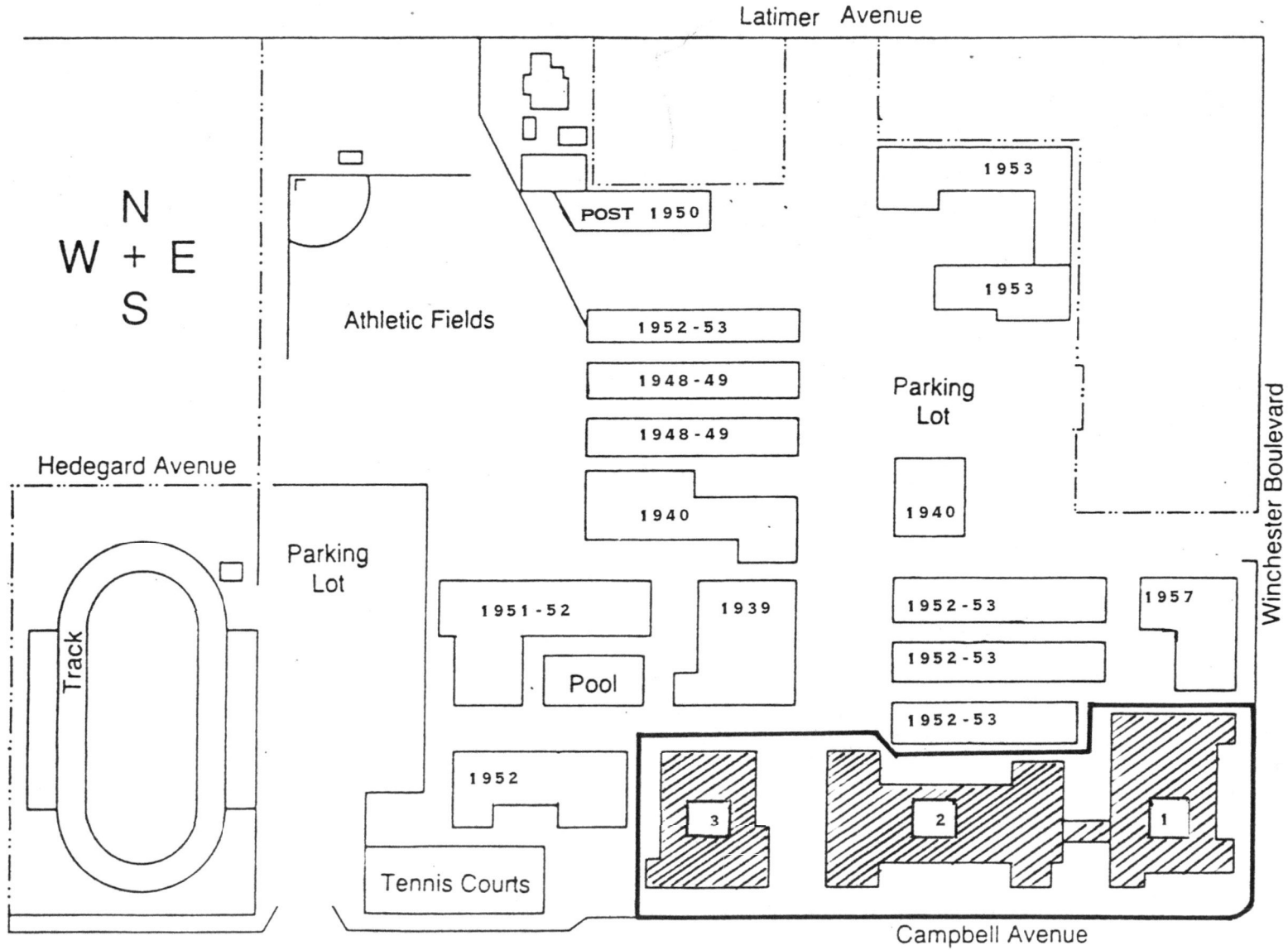
Santa Clara County



CAMPBELL UNION HIGH SCHOOL DISTRICT
1 WEST CAMPBELL AVENUE
CAMPBELL, CALIFORNIA 95008

- 1. ACADEMIC CLASSROOM, 1936
- 2. ADMINISTRATION, 1938
- 3. AUDITORIUM, 1938

SCALE 1" = APPROX
150'



UNITED STATES DEPARTMENT OF THE INTERIOR
NATIONAL PARK SERVICE

NATIONAL REGISTER OF HISTORIC PLACES
EVALUATION/RETURN SHEET

REQUESTED ACTION: NOMINATION

PROPERTY NAME: Campbell Union High School Historic District

MULTIPLE NAME:

STATE & COUNTY: CALIFORNIA, Santa Clara

DATE RECEIVED: 7/05/89 DATE OF PENDING LIST: 7/19/89
DATE OF 16TH DAY: 8/04/89 DATE OF 45TH DAY: 8/19/89
DATE OF WEEKLY LIST:

REFERENCE NUMBER: 89001048

NOMINATOR: STATE

REASONS FOR REVIEW:

APPEAL: N DATA PROBLEM: N LANDSCAPE: N LESS THAN 50 YEARS: N
OTHER: N PDIL: N PERIOD: N PROGRAM UNAPPROVED: N
REQUEST: N SAMPLE: N SLR DRAFT: Y NATIONAL: N

COMMENT WAIVER: N

ACCEPT RETURN REJECT 8/17/89 DATE

ABSTRACT/SUMMARY COMMENTS:

Please note this is a collection of bldgs (originally classif as district) Property is significant within local educational history - consolidated. It served as only high school for over 25 years + as local architectural design of Spanish Revival institutional architecture

RECOM./CRITERIA Accept A,C
REVIEWER Aschlaegel
DISCIPLINE Arch Hist
DATE 8/17/89

DOCUMENTATION see attached comments Y/N see attached SLR Y/N

CLASSIFICATION

count resource type

STATE/FEDERAL AGENCY CERTIFICATION

FUNCTION

historic current

DESCRIPTION

architectural classification
 materials
 descriptive text

SIGNIFICANCE

Period Areas of Significance--Check and justify below

Specific dates Builder/Architect
Statement of Significance (in one paragraph)

summary paragraph
 completeness
 clarity
 applicable criteria
 justification of areas checked
 relating significance to the resource
 context
 relationship of integrity to significance
 justification of exception
 other

BIBLIOGRAPHY

GEOGRAPHICAL DATA

acreage verbal boundary description
 UTM's boundary justification

ACCOMPANYING DOCUMENTATION/PRESENTATION

sketch maps USGS maps photographs presentation

OTHER COMMENTS

Questions concerning this nomination may be directed to

Phone _____

Signed _____

Date _____











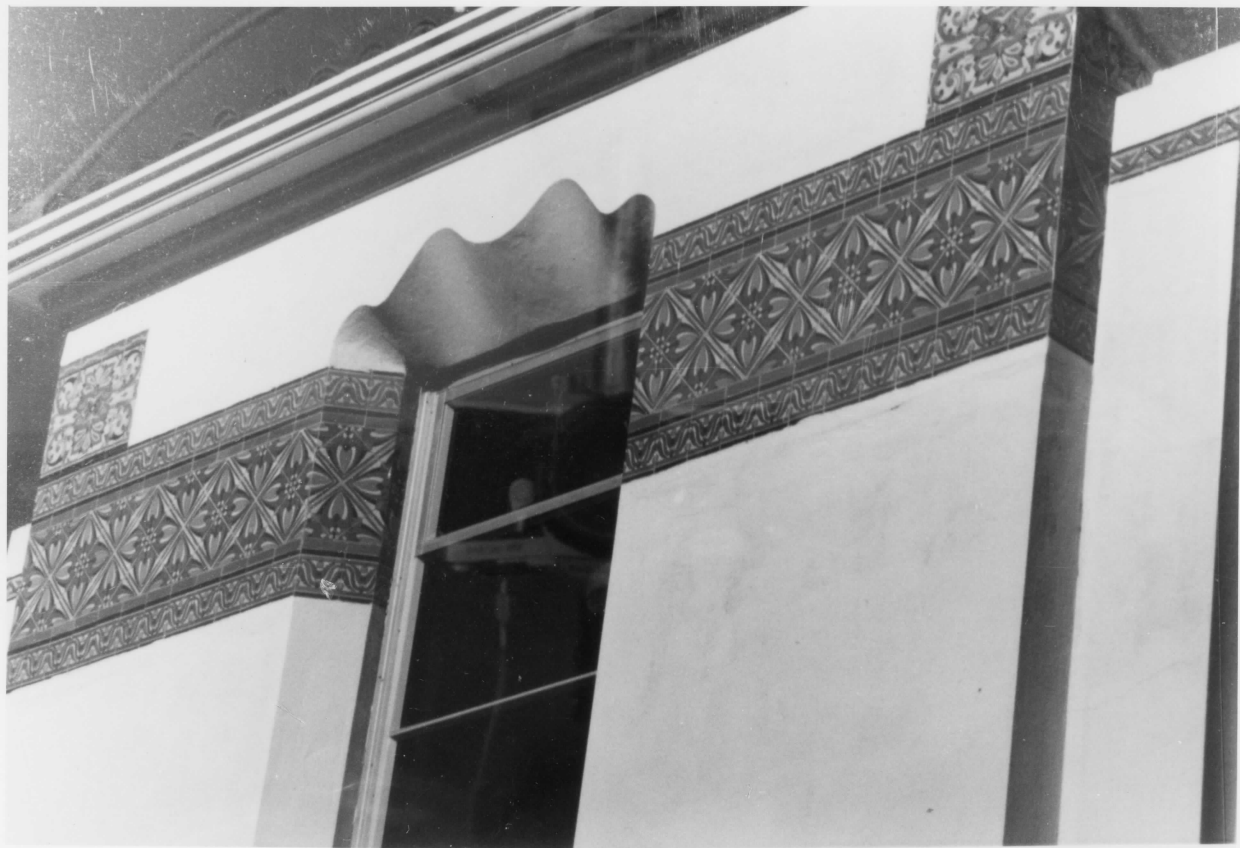








CONDIE COLLEGE



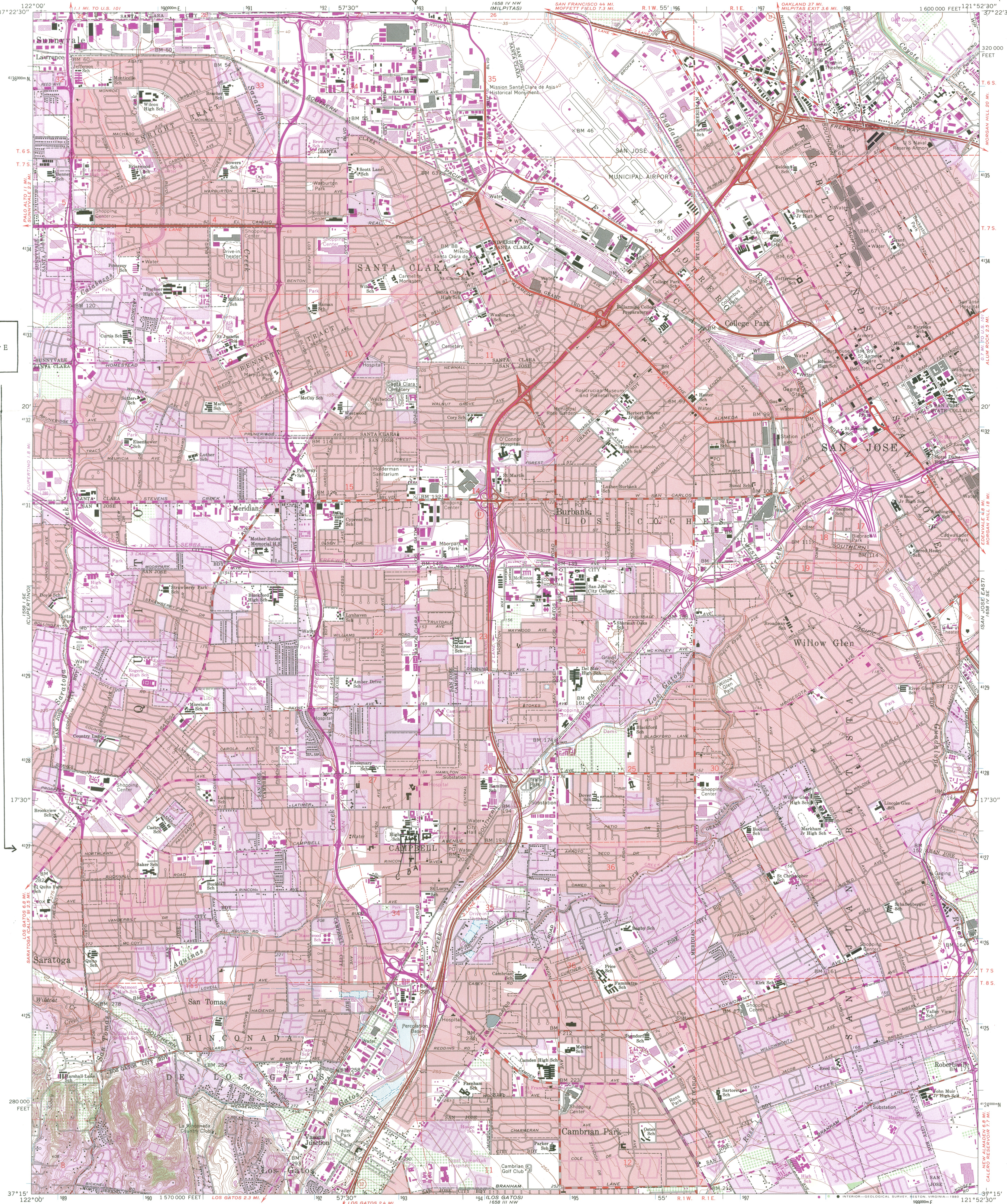




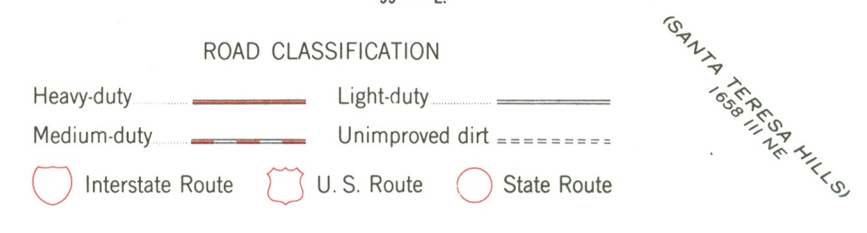
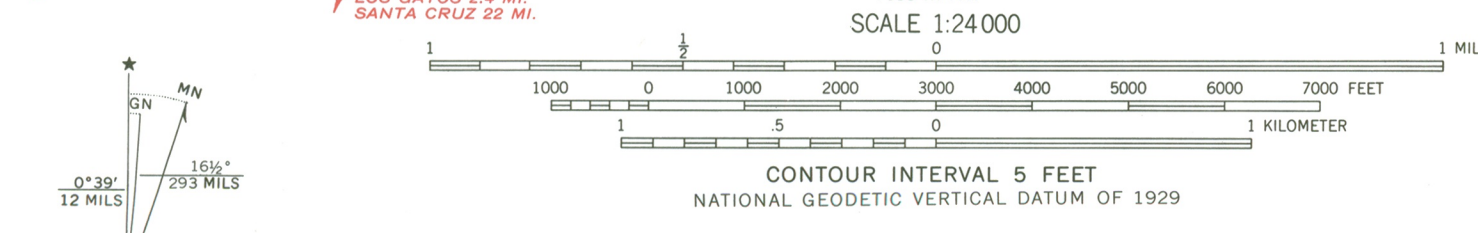




Campbell Union High School District
1 W. Campbell Avenue, Campbell, CA 95008
UTM Reference: Zone 10
Easting 593091
Northing 4127076



Mapped, edited, and published by the Geological Survey with cooperation by the California Department of Water Resources Control by USGS, NOS/NOAA, and USCE
Topography from aerial photographs by photogrammetric methods and by planetable surveys 1953. Aerial photographs taken 1948 Revised from aerial photographs and by planetable surveys 1961 Aerial photographs taken 1960.
Polyconic projection. 10,000-foot grid based on California coordinate system, zone 3. 1000-meter Universal Transverse Mercator grid ticks, zone 10, shown in blue. 1927 North American Datum. To place on the predicted North American Datum 1983 move the projection lines 13 meters north and 94 meters east as shown by dashed corner ticks Red tint indicates areas in which only landmark buildings are shown Dashed land lines indicate approximate locations
The north two-thirds of this map ties within a subsidence area



Revisions shown in purple and woodland compiled from aerial photographs taken 1979 and other source data This information not field checked. Map edited 1980 Purple tint indicates extension of urban areas
THIS MAP COMPLIES WITH NATIONAL MAP ACCURACY STANDARDS FOR SALE BY U. S. GEOLOGICAL SURVEY, DENVER, COLORADO 80225, OR RESTON, VIRGINIA 22092 A FOLDER DESCRIBING TOPOGRAPHIC MAPS AND SYMBOLS IS AVAILABLE ON REQUEST

SAN JOSE WEST, CALIF.
SW/4 SAN JOSE 15' QUADRANGLE
N3715—W12152.5/7.5
1961
PHOTOREVISED 1980
DMA 1658 IV SW—SERIES V895

OFFICE OF HISTORIC PRESERVATION

DEPARTMENT OF PARKS AND RECREATION

POST OFFICE BOX 942896
SACRAMENTO, CALIFORNIA 94296-0001
(916) 445-8006



06/27/89

JUL 05 1989

NATIONAL
REGISTER

Mr. Jerry Rogers, Keeper
National Register of Historic Places
National Park Service
U.S. Department of the Interior
P.O. Box 37127
Washington, D.C. 20013-7127

Dear Mr. Rogers:

Subject: Nomination to the National Register of Historic Places
CAMPBELL UNION HIGH SCHOOL HIST. DIST

We are submitting the above stated property for nomination to the National Register of Historic Places. The property is located in or near: CAMPBELL
in the county of: SANTA CLARA
in: California.

Sincerely,

A handwritten signature in cursive script that reads "Kathryn Gaultieri".

Kathryn Gaultieri
State Historic Preservation Officer

Enclosures

DATE MON, JUL 17, 1989, 11:45 AM
NATIONAL REGISTER OF HISTORIC PLACES PROPERTY REPORT
REFERENCE No.: 89001048

Page: 38

Control No.:

PROPERTY NAME: Campbell Union High School Historic District

OTHER NAME/ NOT APPLICABLE
SITE No. :

MULTIPLE NAME: NOT APPLICABLE

ADDRESS/ 1 W. Campbell Ave.
BOUNDARY :

CITY: Campbell

COUNTY: Santa Clara

STATE: CALIFORNIA

Restricted Location Information: Owner: LOCAL Resource Type: DISTRICT

Contributing Noncontributing

Buildings	3	0
Sites	0	0
Structures	0	0
Objects	0	0

Nomination/Determination Type: SINGLE RESOURCE

Nominator: STATE GOVERNMENT

Nominator Name:
NOT APPLICABLE

Federal Agency: NOT APPLICABLE

NPS Park Name: NOT APPLICABLE

Certification: DATE RECEIVED/PENDING NOMINATION

Date: 07/05/89

Other Certification: NOT APPLICABLE

Historic Functions: NOT APPLICABLE

Historic Subfunctions: NOT APPLICABLE

Current Functions: NOT APPLICABLE

Current Subfunctions: NOT APPLICABLE

Level of Significance: N/A Applicable Criteria: NOT APPLICABLE

Significant Person's Name: NOT APPLICABLE

Criteria Considerations: NOT APPLICABLE

7/17/89
JTB

Area of Significance: NOT APPLICABLE

Periods of: N/A
Significance:

Circa: Specific Sig. Years:

NOT APPLICABLE

Architect/Builder/Engineer/
Designer:

Cultural Affiliation:

NOT APPLICABLE

NOT APPLICABLE

Other Documentation:

NOT APPLICABLE

HABS No. N/A

HAER No. N/A

Architectural Styles: NOT APPLICABLE

Describe Other Style: NOT APPLICABLE

Foundation Materials: NOT APPLICABLE

Wall Materials:

Roof Materials:

Other Materials:

Acreage: 0.0

UTM Zone Easting Northing
NOT APPLICABLE

Zone Easting Northing