

295

United States Department of the Interior  
National Park Service



# National Register of Historic Places Registration Form

This form is for use in nominating or requesting determinations for individual properties and districts. See instructions in *How to Complete the National Register of Historic Places Registration Form* (National Register Bulletin 16A). Complete each item by marking "x" in the appropriate box or by entering the information requested. If an item does not apply to the property being documented, enter "N/A" for "not applicable." For functions, architectural classification, materials, and areas of significance, enter only categories and subcategories from the instructions. Place additional entries and narrative items on continuation sheets (NPS Form 10-900a). Use a typewriter, word processor, or computer, to complete all items.

## 1. Name of Property

historic name St. Luke AME Zion Church

other names/site number N/A

## 2. Location

street & number 3937 12<sup>th</sup> Avenue North

N/A  not for publication

city or town Birmingham

N/A  vicinity

state Alabama

code AL

county Jefferson

code 073

zip code 35234

## 3. State/Federal Agency Certification

As the designated authority under the National Historic Preservation Act, as amended, I hereby certify that this  nomination  request for determination of eligibility meets the documentation standards for registering properties in the National Register of Historic Places and meets the procedural and professional requirements set for in 36 CFR Part 60. In my opinion, the property  meets  does not meet the National Register criteria. I recommend that this property be considered significant  nationally  statewide  locally. (See continuation sheet for additional comments.)

[Signature]  
Signature of certifying official/Title

March 3, 2005  
Date

State Historic Preservation Office, Alabama Historical Commission

State or Federal agency and bureau

In my opinion, the property  meets  does not meet the National Register criteria. ( See Continuation sheet for additional comments.)

Signature of certifying official/Title

Date

State or Federal agency and bureau

## 4. National Park Service Certification

I hereby certify that the property is:

entered in the National Register.

See continuation sheet

determined eligible for the National Register.

See continuation sheet

determined not eligible for the National Register.

removed from the National Register.

other,

(explain:)

Signature of the Keeper

Date of Action

Carey D. Shull

4-22-05

St. Luke AME Zion Church  
Name of Property

Jefferson County, Alabama  
County and State

**5. Classification**

**Ownership of Property**  
(Check as many boxes as apply)

**Category of Property**  
(Check only one box)

**Number of Resources within Property**  
(Do not include previously listed resources in count.)

- private
- public-local
- public-State
- public-Federal

- building(s)
- district
- site
- structure
- object

Contributing	Noncontributing	
1		buildings
		sites
		structures
		objects
1	0	Total

**Name of related multiple property listing**  
(Enter "N/A" if property is not part of a multiple property listing.)

Birmingham Civil Rights Movement, 1933-1979 MPS

**Number of Contributing resources previously listed in the National Register**

0

**6. Function or Use**

**Historic Functions**  
(Enter categories from instructions)

RELIGIOUS: church  
\_\_\_\_\_  
\_\_\_\_\_  
\_\_\_\_\_  
\_\_\_\_\_  
\_\_\_\_\_  
\_\_\_\_\_

**Current Functions**  
(Enter categories from instructions)

RELIGIOUS: church  
\_\_\_\_\_  
\_\_\_\_\_  
\_\_\_\_\_  
\_\_\_\_\_  
\_\_\_\_\_  
\_\_\_\_\_

**7. Description**

**Architectural Classification**  
(Enter categories from instructions)

Gothic Revival  
\_\_\_\_\_  
\_\_\_\_\_

**Materials**  
(Enter categories from instructions)

foundation Brick; Concrete  
walls Brick  
roof Asphalt Shingle  
other Metal; Wood; Glass  
\_\_\_\_\_

**Narrative Description**

(Describe the historic and current condition of the property on one or more continuation sheets.)

See continuation sheets.

United States Department of the Interior  
National Park Service  
**National Register of Historic Places**  
**Continuation Sheet**

7

Page

1

St. Luke AME Zion Church, Jefferson County, AL

## VII. Description

St. Luke AME Zion Church is at 3937 12<sup>th</sup> Avenue North, on a small urban lot surrounded by residences from the 1920s and 1930s and facing Patton Park. The building is an imposing *piano nobile* red one-story brick church that rests on a full basement. It is of eclectic Gothic Revival interpretation, appearing primarily Gothic by its corner towers and pointed belfry vents and Romanesque by its solidity and large round-arched recessed tower entry at the top of a spillage of steps. The original battlemented towers, which originally rose 15 feet above the front parapet, were lowered c. 1950 to a concrete course-line and now are capped with low pyramidal roofs;

The north façade has three sections: a projecting center section of four bays flanked by square towers. The projecting main block has four narrow rectangular windows, divided one-two-one by pilasters, with concrete headers and sills and with lozenges inset above. The glass is translucent and tinted in metal jalousie frames, with concrete headers and sills. This central projecting section terminates at the top with blind arches, battlements and pinnacles which, judging from a 1939 photograph before the towers were truncated, reflected the decoration of the tower parapets. The lancet tower windows are now punched out and occluded by panels of some material. Entries in both the main-level tower and the center of the ground-level front are six-panel double wood doors. On the lower level the doors are flanked by plain two-over-two double hung translucent metal-frame windows. A concrete belt course separates the basement and sanctuary levels;.

The east elevation has nine bays. At the vestibule (the east side of the tower) and first sanctuary bay windows (bays 1-2) and at the rear bay (bay 8), the windows are metal-framed five-stacked panes of translucent glass with the three middle panes being painted glass in a brown-blue-brown pattern. The six sanctuary windows are larger with a large untinted upper light. These nine windows of the sanctuary level have brick segmental arches while the eight windows on the basement level do not. These are two-over-two translucent glass windows in metal frames. At the south end of the elevation is an asphalt shed and flat roof one-story brick addition, which dates c. 1950, that stretches across the rear of the church. A raised concrete staircase with metal railing reaches a side entrance on the sanctuary level. Flanking the metal six-panel door, installed c. 1990, are paired four-pane metal frame translucent glass windows with a brown-blue window in the middle of the four. This elevation was damaged by a bombing in 1962. The bomb left a gaping hole in the east elevation and blew out the original windows. The congregation repaired the church immediately that year.

The south elevation is a brick wall, the rear of the c. 1950 addition, which has a metal six-paneled door off-centered on the sanctuary level. A concrete staircase with metal railing leads to the door.

The west elevation (street side) is similar to the east elevation in its nine bays and metal frame windows, but since it was not severely damaged by the 1962 bombing there is much more ornamentation in its design in a pattern similar to the façade. There is a concrete belt course separating the sanctuary and basement levels. The sanctuary windows have flat concrete headers and sills and they are divided by pier buttresses. The cornice over the sanctuary windows is similar to the façade, with blind arches, battlements, and pinnacles. The basement-level windows are two-over-two translucent glass windows in metal frames. At the basement level on the c. 1950 addition is a metal door, with a shed metal canopy.

The sanctuary contains the standard pattern of two aisles dividing the pews into three sections, with the longer pews being placed in the center. The aisles are angled towards the front, where the sacrament table, dais and pulpit are arranged in the traditional manner. The choir section is behind the pulpit, and is recessed like a chancel with three pew rows.

In the main sanctuary, the ceiling is slightly bowed or barreled over the central section and flat over the side sections. In renovating and repairing the church in the aftermath of the 1962 bombing, the congregation also decided to make minor changes to the interior. It added wood wainscoting to the plaster walls. The original coffered ceiling is now covered in acoustical tiles (although restoration of the original is anticipated); new wood pews were installed (although two pews survive on the lower level), and red carpet was installed over hardwood floors. It also substituted metal-frame for wood-frame windows after the 1962 bomb damage sustained by the church.

United States Department of the Interior  
National Park Service  
**National Register of Historic Places**  
**Continuation Sheet**

7

Page

2

East End Baptist Church, Jefferson County, AL

---

The church meets the registration requirements for church buildings in the Birmingham's Civil Rights Movement, 1933-1979 MPS. It retains a high degree of integrity in setting, location, design, materials, workmanship, and association. The primary changes that have occurred to the building since 1930 took place during the period of significance, when a bomb severely damaged the building's exterior and interior.

**Archaeological Component**

Although no formal archaeological testing has been conducted, the potential for subsurface materials remains.

St. Luke AME Zion Church  
Name of Property

Jefferson County, Alabama  
County and State

**8. Statement of Significance**

**Applicable National Register Criteria**  
(Mark "x" in one or more boxes for the criteria qualifying the property for National Register listing.)

- A** Property is associated with events that have made a significant contribution to the broad patterns of our history.
- B** Property is associated with the lives of persons significant in our past.
- C** Property embodies the distinctive characteristics of a type, period, or method of construction or represents the work of a master, or possesses high artistic values, or represents a significant and distinguishable entity whose components lack individual distinction.
- D** Property has yielded, or is likely to yield, information important in prehistory or history.

**Criteria Considerations**  
(Mark "x" in all the boxes that apply.)  
Property is:

- A** owned by a religious institution or used for religious purposes.
- B** removed from its original location.
- C** moved from its original location.
- D** a cemetery.
- E** a reconstructed building, object, or structure.
- F** a commemorative property
- G** less than 50 years of age or achieved significance within the past 50 years.

**Narrative Statement of Significance**  
(Explain the significance of the property on one or more continuation sheets.)

**Areas of Significance**  
(Enter categories from instructions)

Social History  
Ethnic Heritage: African American

**Period of Significance**  
1960-63

**Significant Dates**  
1962

**Significant Person**  
(Complete if Criterion B is marked)  
N/A

**Cultural Affiliation**  
N/A

**Architect/Builder**  
N/A

**9. Major Bibliographical References**

**Bibliography**  
(Cite the books, articles, and other sources used in preparing this form on one or more continuation sheets.)

- Previous documentation on file (NPS):** N/A
- preliminary determination of individual listing (36 CFR 67) has been requested
  - previously listed in the National Register
  - Previously determined eligible by the National Register
  - designated a National Historic Landmark
  - recorded by Historic American Buildings Survey # \_\_\_\_\_
  - recorded by Historic American Engineering Record # \_\_\_\_\_

**Primary location of additional data:**

- State Historic Preservation Office
- Other State Agency
- Federal Agency
- Local Government
- University
- Other

Name of repository: Birmingham Historical Society, Birmingham Public Library

St. Luke AME Zion Church  
Name of Property

Jefferson County, Alabama  
County and State

**10. Geographical Data**

**Acreage of Property** Less than one acre

**UTM References**

(Place additional UTM references on a continuation sheet.)

1 16 520360 3711490  
Zone Easting Northing  
2 \_\_\_\_\_

3 \_\_\_\_\_  
Zone Easting Northing  
4 \_\_\_\_\_

See continuation sheet

**Verbal Boundary Description**

(Describe the boundaries of the property on a continuation sheet.)

**Boundary Justification**

(Explain why the boundaries were selected on a continuation sheet.)

**11. Form Prepared By**

name/title Carroll Van West, with earlier material by Linda Nelson and Marjorie White  
organization Center for Historic Preservation date March 24, 2003  
street & number Middle Tennessee State University—Box 80 telephone 615-898-2947  
city or town Murfreesboro state TN Zip code 37132

**Additional Documentation**

Submit the following items with the completed form:

**Continuation Sheets**

**Maps**

- A **USGS map** (7.5 or 15 minute series) indicating the property's location
- A **Sketch map** for historic districts and properties having large acreage or numerous resources.

**Photographs**

Representative **black and white photographs** of the property.

**Additional items**

(Check with the SHPO or FPO for any additional items.)

**Property Owner**

(Complete this item at the request of SHPO or FPO.)

name St. Luke AME Zion Church (Rev. Sondra Coleman)  
street & number 3937 12<sup>th</sup> Avenue North telephone 205-592-3146  
city Birmingham state Alabama zip code 35234

**Paperwork Reduction Act Statement:** This information is being collected for applications to the National Register of Historic Places to nominate properties for listing or determine eligibility for listing, to list properties, and to amend existing listing. Response to this request is required to obtain a benefit in accordance with the National Historic Preservation Act, as amended (16 U.S.C. 470 *et seq.*)

**Estimated Burden Statement:** Public reporting burden for this form is estimated to average 18.1 hours per response including time for reviewing instructions, gathering and maintaining data, and completing and reviewing the form. Direct comments regarding this burden estimate or any aspect of this form to the Chief, Administrative Services Division, National Park Service, P. O. Box 37127, Washington, DC 20013-7127; and the Office of Management and Budget, Paperwork Reductions Projects (1024-0018), Washington, DC 20303.

United States Department of the Interior  
National Park Service  
**National Register of Historic Places**  
**Continuation Sheet**

8

Page

3

East End Baptist Church, Jefferson County, AL

## VIII. Significance

Dating to 1930, the St. Luke AME Zion Church is eligible for listing in the National Register of Historic Places under Criterion A, as one of the leading Birmingham churches involved in the Alabama Christian Movement for Human Rights in the Civil Rights era and as a scene of conflict in 1962 when it was bombed and damaged. It meets the registration requirements for a Conflict Center as discussed in the Birmingham's Civil Rights Movement, 1933-1979 MPS.

Rev. John O. Hart, the church's minister from 1960-63, gave spiritual and financial support to the Birmingham's Civil Rights struggle and Civil Rights meetings took place at the church building during his tenure. Historians of the Civil Rights Movement have long discussed the intersection of faith and activism in the mass meetings held at various Birmingham churches. Historian and Baptist minister Wilson Fallin, Jr., emphasized:

The influence of the African-American church and its peculiar culture on the ACMHR stands out most vividly in the organization's weekly mass meetings. These meetings were essentially African-American church worship services. The meetings began with a thirty-minute devotional service made up of prayers, spirituals, and meter hymns, followed by singing by the ACMHR choir. The presider, usually ACMHR vice-present, the Reverend Edward Gardner, offered brief remarks. A local supporting pastor delivered a sermon. President Shuttlesworth then made some remarks and the ushers took up the offering. The meetings were very emotional with much shouting. . . The emotionalism of the mass meetings, as in an African-American church, provided not only emotional release but also the courage to fight the forces of segregation in a hostile environment. (Fallin, 15-16)

Furthermore, the mass meetings were important tools of oral communication for a society that had few other public options, since open discussion of civil rights strategies over the airwaves or in print could provoke severe reactions from white extremists. Furthermore, activists knew that to reach the core working-class residents of their neighborhoods, meetings in the churches were much more effective venues than print or electronic media. It was thus at the churches where activists, often a combination of local ministers, community leaders, and the occasional visitor from another Civil Rights hotbed, relayed the important messages and key strategies to be debated and carried out. The churches were considered safe havens in an often hostile environment.

But sometimes the hostility overwhelmed the church's role in America as a safe haven. Due to the church's public support for the Movement, it became a target for domestic terrorists, who bombed the church, along with two others, on January 16, 1962. The bombers targeted New Bethel Baptist Church at 13<sup>th</sup> Avenue and Sipsey Street, St. Luke's AME Zion Church, and Triumph Church and Kingdom of God and Christ at 2505 24<sup>th</sup> Street North. Of the three churches, St. Luke's AME Zion was the most damaged. The blast blew out the original windows and knocked a large hole in the east wall. These three churches were the first to be bombed in Birmingham since Bethel Baptist Church had been bombed for the second time in 1958. The bombings were attempts to deter and discourage the recent progress of the ACMHR and the Southern Christian Leadership Conference in pushing for the desegregation of public parks and pools and the beginnings of the Selective Buying Campaign.

Rev. Hart and the congregation were not deterred and remained in the Alabama Christian Movement for Human Rights. They also rebuilt the damaged wall and renovated the damaged interior, which today remains extant. The congregation held meetings here in the spring of 1963 to plan its involvement in the Project C demonstrations of April and May 1963. The congregation also sponsored workshops for voter registration in 1964-1966.

St. Luke AME Zion Church meets the registration requirements for Criterion A as listed in the Birmingham's Civil Rights Movement, 1933-1979 MPS. The church was an important strategy center for the Movement in the Project C demonstrations and it became a significant conflict center due to being bombed and damaged in 1962.

United States Department of the Interior  
National Park Service  
**National Register of Historic Places**  
**Continuation Sheet**

9, 10

Page

4

St. Luke AME Zion Church, Jefferson County, AL

---

IX. Bibliography

Birmingham City Directories, 1915, 1922, 1931.

*Birmingham Post-Herald*, January 17, 1962.

Eskew, Glenn. *But for Birmingham*. Chapel Hill: University of North Carolina Press, 1998.

Fallin, Wilson, Jr. "Rock Solid Faith: African American Church Life and Culture in 1956 Birmingham." Marjorie L. White and Andrew M. Manis, eds. *Birmingham Revolutionaries: The Reverend Fred Shuttlesworth and the Alabama Christian Movement for Human Rights*. Macon, GA: Mercer University Press, 2000. 7-18.

Hendricks, Lola. Interviews with Marjorie L. White. 1999. Birmingham Historical Society.

Fieldwork notes, July 24, 2003. In possession of the author.

St. Luke AME Zion Church Files, Birmingham Historical Society Civil Rights Collection-Alabama Christian Movement for Human Rights and Civil Rights Churches Files, Birmingham Historical Society, Birmingham, Alabama. Files include Board of Equalization Records, City Directory Trace, and Photographs.

Temple, Chanda and Jeff Hansen. "Ministers' Homes, Churches Among Bomb Targets." *Birmingham News*, July 16, 2000.

White, Marjorie L., *A Walk to Freedom-The Reverend Fred Shuttlesworth and the Alabama Movement for Human Rights*. Birmingham: Birmingham Historical Society, 1998.

X. Verbal Boundary Description and Justification

The nominated boundaries of St. Luke AME Zion Church at 3937 12<sup>th</sup> Avenue North are represented by Lots 11-12, Block 47, East Birmingham Land Company, as marked on the attached Jefferson County Tax Map 01-23-19-1, Sections NE ¼ 19, Township 17 South, Range 2 West. The boundaries contain all of the historic property significantly associated with the St. Luke AME Zion Church.

United States Department of the Interior  
National Park Service  
**National Register of Historic Places**  
**Continuation Sheet**

         Photographs          Page

    5    

St. Luke AME Zion Church, Jefferson County, AL

---

St. Luke AME Zion Church  
Birmingham, Jefferson Co., AL

Photographs (exterior) by: Carroll Van West  
MTSU Center for Historic Preservation  
July 2003

Photographs (interior) by: Birmingham Historical Society  
January 2000

North façade, facing south  
1 of 10

North façade, facing southwest  
2 of 10

North façade and east elevation, facing southwest  
3 of 10

North façade and west elevation, facing southeast  
4 of 10

South elevation, facing northeast  
5 of 10

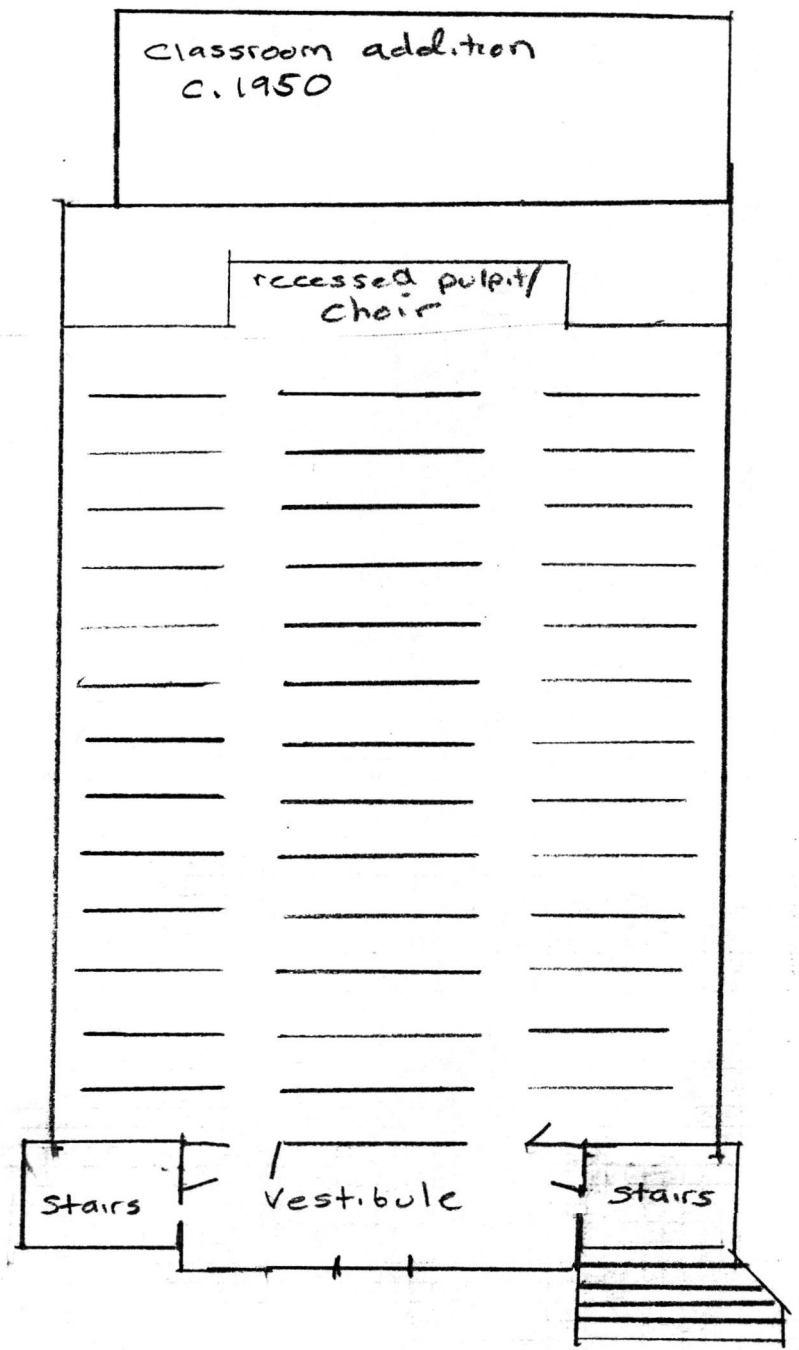
Sanctuary, facing south  
6 of 10

Pulpit, facing south  
7 of 10

Sanctuary, facing east  
8 of 10

Sanctuary, facing west  
9 of 10

Sanctuary, facing north  
10 of 10



Side of Church Bombed 1962 →

39th Street N

12th Avenue N

Patten Park

St. Luke AME Zion  
 3937 12th Ave North  
 Birmingham AL

N ↓  
 2003:RVS

UNITED STATES DEPARTMENT OF THE INTERIOR  
NATIONAL PARK SERVICE

NATIONAL REGISTER OF HISTORIC PLACES  
EVALUATION/RETURN SHEET

REQUESTED ACTION: NOMINATION

PROPERTY St. Luke AME Zion Church  
NAME:

MULTIPLE Civil Rights Movement in Birmingham, Alabama MPS  
NAME:

STATE & COUNTY: ALABAMA, Jefferson

DATE RECEIVED: 3/08/05 DATE OF PENDING LIST: 3/23/05  
DATE OF 16TH DAY: 4/07/05 DATE OF 45TH DAY: 4/21/05  
DATE OF WEEKLY LIST:

REFERENCE NUMBER: 05000295

REASONS FOR REVIEW:

APPEAL: N DATA PROBLEM: N LANDSCAPE: N LESS THAN 50 YEARS: Y  
OTHER: N PDIL: N PERIOD: N PROGRAM UNAPPROVED: N  
REQUEST: N SAMPLE: N SLR DRAFT: N NATIONAL: N

COMMENT WAIVER: N

ACCEPT  RETURN  REJECT \_\_\_\_\_ DATE

ABSTRACT/SUMMARY COMMENTS:

St. Luke <sup>A</sup> AME Zion Church is locally significant under Criterion A as a site of conflict during the civil rights era in Birmingham. The congregation actively supported the Alabama Christian Movement for Human Rights, and the minister of the church, Reverend John O. Hart, gave spiritual and financial support to civil rights activists. In January 1962, the church was bombed by segregationists and suffered extensive damage. The congregation, however, was undeterred. It immediately repaired the church and continued to participate in planning and carrying out civil rights demonstrations. The congregation participated in the Project C demonstrations during the spring of 1963 and also sponsored voter registration workshops in 1964-1966. Today, the church retains integrity from its period of significance and reflects the grassroots activism that sustained and was central to the success of the Civil Rights Movement. Because the property achieved significance within the past fifty years, it meets Criterion Consideration G.

RECOM./CRITERIA Accept A

REVIEWER Daniel Visian

DISCIPLINE Historian

TELEPHONE (202) 354-2252

DATE 4/15/05

DOCUMENTATION see attached comments Y/N see attached SLR Y/N

If a nomination is returned to the nominating authority, the nomination is no longer under consideration by the NPS.



St. Luke AME Zion Church, Jefferson Co AL

1/10



St. Luke AME Zion Church, Jefferson Co AL

2/10



St. Luke A.M.E. Zion Church, Jefferson Co AL

3110



St. Luke AME Zion Church, Jefferson Co AL

4/10



St. Luke AME Zion Church, Jefferson Co AL

5/10





St. Luke AME Zion Church, Jefferson Co AL

6/10



St. Luke A.M.E. Zion Church Jefferson Co AL 7/10





St. Luke AME Zion Church, Jefferson Co AL

8/10



St. Luke AME Zion Church, Jefferson Co AL 9/10



St. Luke AME Zion Church, Jefferson Co AL

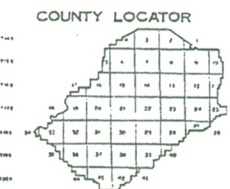
10/10





TOWNSHIP MAP  
 COUNTY OF  
**JEFFERSON**  
 PREPARED UNDER THE DIRECTION  
 OF THE  
 STATE OF ALABAMA  
 DEPARTMENT OF REVENUE  
 AD VALOREM TAX DIVISION

PREPARED BY  
 COLE-LAYER-TRUMBLE CO.  
 ATLANTA, GEORGIA  
 TAX MAPS DIVISION  
 SCALE 1" = 100'  
 DATE OF MAP: 11-23-76 DATE OF PHOTOGRAPHY: 12-18-74



TOWNSHIP LOCATOR  
 (INDEX TO 1" x 400' & 1" x 200' MAPPINGS)

6	5	4	3	2	1
7	8	9	10	11	12
18	17	16	15	14	13
19	20	21	22	23	24
30	29	28	27	26	25
31	32	33	34	35	36

SUB-SHEET INDEX

10-3	10-4	10-5
11-2	11-1	11-2
12-3	12-4	12-5

- LEGEND
- STATE LINE ----- AREA (FROM DEED) 10.5 A1
  - COUNTY LINE ----- AREA (CALCULATED) 10.5 A1 (1)
  - CORPORATION LINE ----- DIMENSION (FROM DEED) 10 5
  - DISTRICT LINE ----- DIMENSION (SCALED) 86 (1)
  - ROAD R/W ----- WATER
  - TRAVELED ROAD ----- INTERSTATE HIGHWAY 10 5
  - RAILROAD R/W ----- U.S. HIGHWAY 10 5
  - PROPERTY LINE ----- STATE HIGHWAY 10 5
  - LAND HOOK ----- COUNTY HIGHWAY 10 5
  - INTERIOR TRACT LINE OR ORIGINAL TRACT LINE ----- ROADS OR STREETS BY NAME
  - SUBDIVISION LOT NUMBER 29 ----- MAJOR TRANSMISSION LINES (BY NAME)
  - PARCEL NUMBER 15 ----- SECTION CORNERS 2 1 11 12
  - BLOCK LIMIT (WHERE APPLICABLE) ----- STATE PLANE COORDINATES
  - OWNERSHIP MAP BLOCK (WHERE APPLICABLE) 2
  - CHURCHES, SCHOOLS, CENTERS, AIRPORTS, GOVERNMENT LANDS, ETC. BY NAME

REVISIONS  
 CHANGES OR ADDITIONS

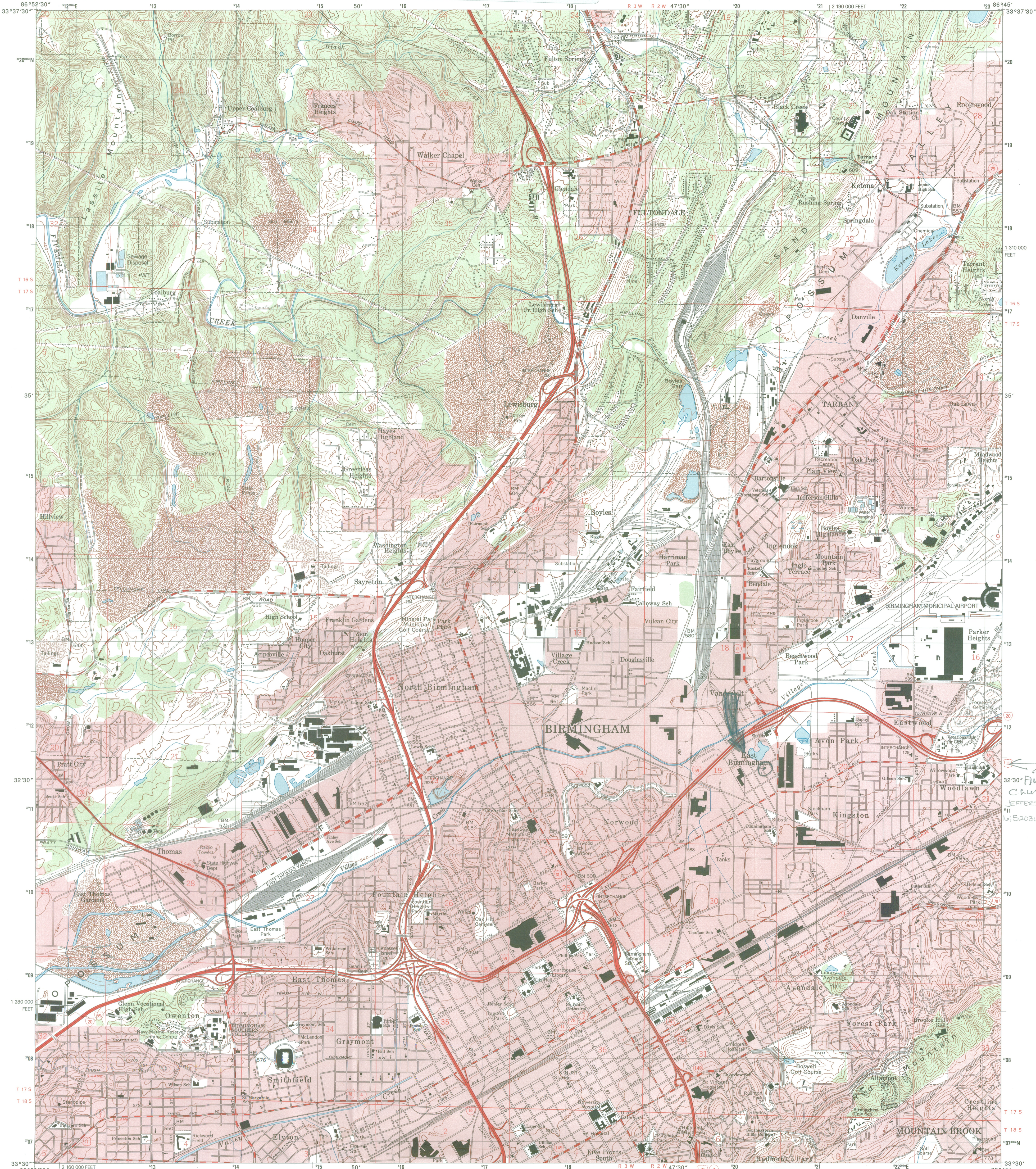
DATE	BY	REVISIONS

SECTIONS NE 1/4 19  
 TSP. 17 SOUTH, RANGE 2 WEST

01-23--19-1  
 MAP NUMBER

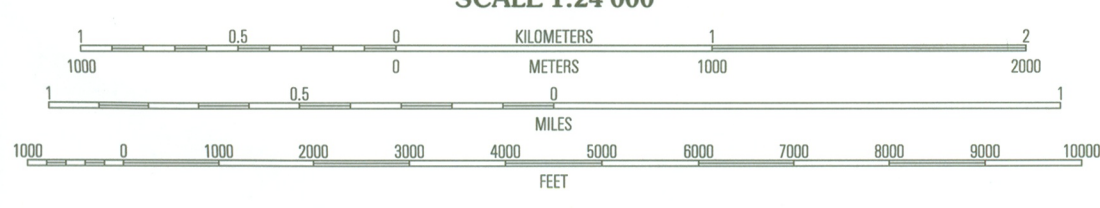
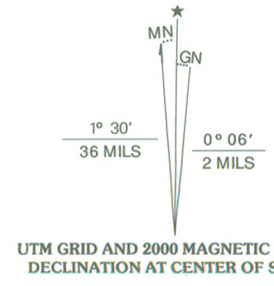
St. Luke A.M.E. Zion Church  
 3937 12th Avenue North

MAPS TO BE USED FOR TAX PURPOSES ONLY - NOT TO BE USED FOR CONVEYANCE



St. Luke's Church  
JEFFERSON CO, AL  
32°30' 11" N  
86°32' 30" W

Produced by the United States Geological Survey  
Topography compiled 1957. Planimetry derived from imagery taken 1997 and other sources. Public Land Survey System and survey control current as of 1959  
North American Datum of 1983 (NAD 83). Projection and 1 000-meter grid: Universal Transverse Mercator, zone 16 10 000-foot ticks: Alabama Coordinate System of 1983 (west zone)  
North American Datum of 1927 (NAD 27) is shown by dashed corner ticks. The values of the shift between NAD 83 and NAD 27 for 7.5-minute intersections are obtainable from National Geodetic Survey NADCON software  
There may be private inholdings within the boundaries of the National or State reservations shown on this map  
Landmark buildings verified 1959



CONTOUR INTERVAL 20 FEET  
NATIONAL GEODETIC VERTICAL DATUM OF 1983  
TO CONVERT FROM FEET TO METERS, MULTIPLY BY 0.3048



ROAD CLASSIFICATION  
Primary highway hard surface .....  
Secondary highway hard surface .....  
Light-duty road, hard or improved surface .....  
Unimproved road .....  
Interstate Route  
U.S. Route  
State Route

ADJOINING 7.5' QUADRANGLE NAMES

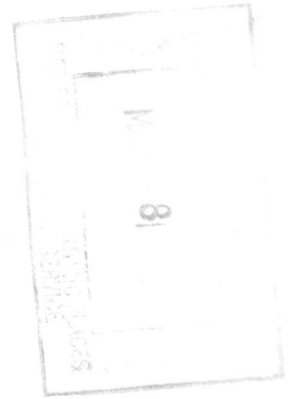
1	2	3	1 Brookside
			2 Gardendale
			3 Pinson
4	5	6	4 Adamsville
			5 Irondale
			6 Bessemer
			7 Birmingham South
6	7	8	8 Cahaba Heights

BIRMINGHAM NORTH, AL  
1997

NIMA 3651 III SE-SERIES V844

THIS MAP COMPLIES WITH NATIONAL MAP ACCURACY STANDARDS  
FOR SALE BY U.S. GEOLOGICAL SURVEY, P.O. BOX 25286, DENVER, COLORADO 80225  
A FOLDER DESCRIBING TOPOGRAPHIC MAPS AND SYMBOLS IS AVAILABLE ON REQUEST





**OFFICE OF THE MAYOR  
CITY OF BIRMINGHAM**

**BERNARD KINCAID, MAYOR**

September 10, 2004

Ms. Christy Anderson  
National Register Coordinator  
Alabama Historical Commission  
468 South Perry Street  
Montgomery, Alabama 35130

**Re: National Register Nominations of Civil Rights Churches in Birmingham, AL**

Dear Ms. Anderson:

As Mayor of the City of Birmingham, it gives me great pleasure to support the nomination of the following churches to the National Register of Historic Places:

Bethel AME Church	Oak Street Baptist Church
Christian Valley Baptist Church	Old Metropolitan CME Church
East End Baptist	Peace Baptist Church
First Baptist Church, East Thomas	St. Luke AME Church
First Baptist Church, Kingston	St. Luke AME Zion Church
First Ebenezer Baptist Church	Sardis Baptist Church
Metropolitan Community Church	Shady Grove Baptist Church
Mount Ararat Baptist Church	22 <sup>nd</sup> Avenue Baptist Church
New Pilgrim Baptist Church	West End Hills Missionary Baptist Church
New Rising Star Baptist Church	

These churches were profoundly instrumental as meeting and worship places during the Civil Rights Movement in Birmingham, Alabama. In my opinion, each church meets the criteria for listing in the National Register, and each church is an extremely important part of our local and national heritage. Therefore, I enthusiastically recommend that the historical significance of these Civil Rights Churches be properly recognized and preserved for present and future generations.

Sincerely,

A handwritten signature in cursive script that reads "Bernard Kincaid".

Bernard Kincaid  
Mayor

JOHN P. MCKLEROY, JR.  
EUGENE P. STUTTS  
SAMUEL H. FRAZIER  
ALTON D. PARKER, JR.  
CHARLES D. STEWART  
HAROLD H. GOINGS  
PAUL S. LEONARD  
PAUL I. SOTHEKLAND  
ROBERT L. WILLIAMS  
GARY A. PARKER  
DAVID S. MAXEY  
RODERICK K. NELSON  
STEVE R. BURFORD  
HOWARD K. GLICK  
MARK W. MACOY  
WALTER F. McARDLE  
R. TAYLOR ABBOT, JR.  
ANTHONY C. PORTERA

## SPAIN & GILLON, LLC

THE ZINSZER BUILDING  
2117 SECOND AVENUE NORTH  
BIRMINGHAM, ALABAMA 35203-3753

TELEPHONE (205) 324-4100

FACSIMILE (205) 324-8866

WRITER'S DIRECT DIAL NUMBER

LESLIE E. McFALL  
NORMAN M. GEM  
JARED B. BAZEMORE  
TAMM S. STEWART  
MONICA L. CARROLL  
BRANDY A. BOONE  
RICHARD S. HILEY  
ROBERT GROOMS, JR.  
OLLIE L. BLAN, JR.  
JAMES E. CLARK  
OF COUNSEL  
FRANK E. SPAIN  
1991-1999  
JOHN W. GILLON  
1999-1999

September 29, 2004

Ms. Christy Anderson  
National Register Coordinator  
Alabama Historical Commission  
468 South Perry Street  
Montgomery, Alabama 35130

**Re: National Register Nominations of Civil Rights Churches in Birmingham, AL**

Dear Ms. Anderson:

As Chairman of the Birmingham Historical Commission, please accept this letter as the Commission's written support of the nominations of the following churches to the National Register of Historic Places:

Bethel AME Church  
Christian Valley Baptist Church  
East End Baptist  
First Baptist Church, East Thomas  
First Baptist Church, Kingston  
First Ebenezer Baptist Church  
Metropolitan Community Church  
Mount Ararat Baptist Church  
New Pilgrim Baptist Church  
New Rising Star Baptist Church

Oak Street Baptist Church  
Old Metropolitan CME Church  
Peace Baptist Church  
St. Luke AME Church  
St. Luke AME Zion Church  
Sardis Baptist Church  
Shady Grove Baptist Church  
22<sup>nd</sup> Avenue Baptist Church  
West End Hills Missionary Baptist Church

At its meeting on September 23, 2004, the Commission voted to support the National Register nominations of these churches, which were extremely instrumental as meeting places for the Alabama Christian Movement for Human Rights during the Civil Rights Movement in Birmingham. In the opinion of the Birmingham Historical Commission, each church meets the criteria for listing on the National Register, and each church is a profoundly important part of our local and national heritage. Therefore, the Commission enthusiastically recommends that the historical significance of these Civil Rights Churches be properly recognized and preserved for present and future generations.

Sincerely,



Samuel H. Frazier  
Chairman, Birmingham Historical Commission