

KUPPERSMITH HOUSE
MW/COFFEE/PANTRY

MERILLAT CABINETY

SILHOUETTE MAPLE DOORSTYLE
KONA FINISH

HARDWARE:
#HK137 SATIN NICKEL KNOB
-OR-
#HP103 SATIN NICKEL SUITCASE PULL

TOP MOLDING:
3-ECM

TOE BASE:
2-TFB
2-FT3-96

MISCELLANEOUS:
8-SADO
1-TUK
2-SS

FLOOR PLAN

© 2010
MASCO Cabinetry, LLC
All Rights Reserved

Merillat.

Designed: 11/24/2010
Printed: 12/6/2010

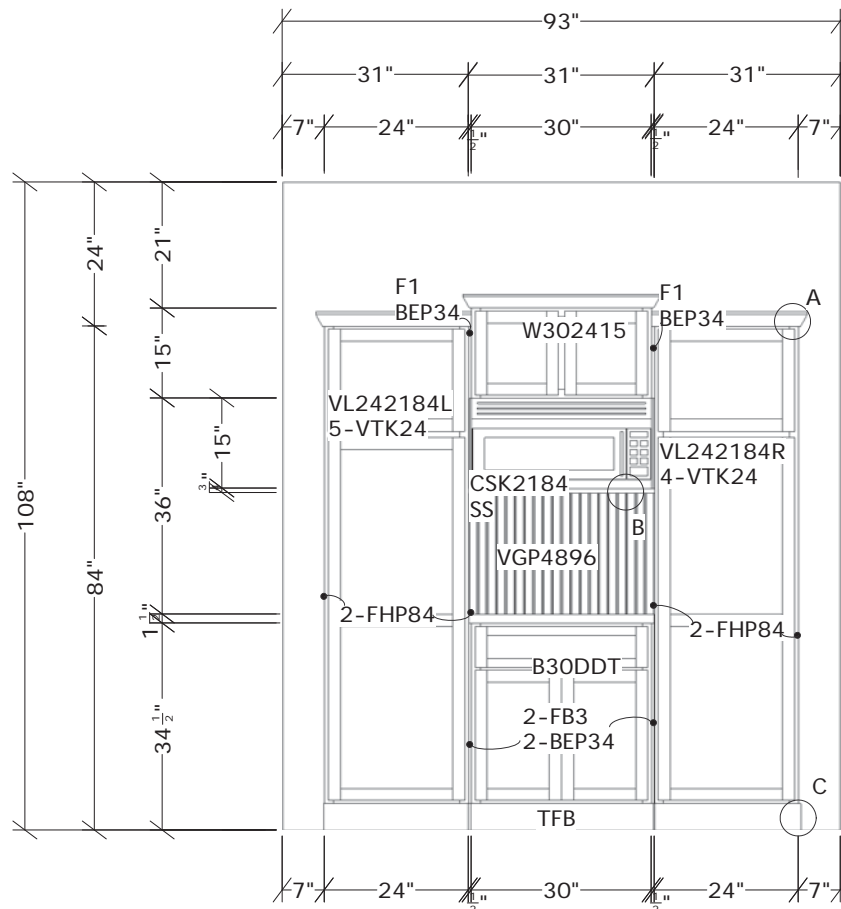
1 OF 5

KUPPERSMITH_MW

FLOOR PLAN

Drawing #: 1

Scale : 0 1/2" = 1'



INSTALLATION NOTES:

4-FHP84: CUT EACH TO 20 1/4" WIDE. INSTALL LEFT AND RIGHT OF VL212484L AND VL242184R, BEHIND FACE FRAME.

2-F1: CUT EACH TO 1/2" WIDE X 12" HIGH. INSTALL ON EACH SIDE OF W302415, EVEN WITH FACE FRAME OF VL242184L AND VL242184R.

BEP34: CUT INTO TWO PIECES 15" HIGH. INSTALL LEFT AND RIGHT OF W302415, BEHIND FACE FRAME.

VGP4896: CUT TO 31" WIDE X 36" WIDE. ATTACH TO CONCEAL BACK WALL.

CSK2184 AND SS: CUT CSK2184 TO 31" WIDE X 20 9/16" DEEP. FINISH FRONT EDGE WITH SS. SEE DETAIL "B" ON MOLDING DETAILS PAGE. INSTALL TIGHT AGAINST BOTTOM OF MICROWAVE.

2-FB3: CUT EACH TO 1/2" WIDE. INSTALL ON EACH SIDE OF B30DDT, EVEN WITH FACE FRAME OF VL242184L AND VL242184R.

2-BEP34: SECURE TO EACH SIDE OF B30DDT, BEHIND FACE FRAME.

9-VTK24: SPACE EVENLY AND INSTALL FIVE VTK24 IN VL242184L AND FOUR VTK24 IN VL242184R.

SADO: INSTALL SOFTACTION DOOR CLOSING HARDWARE ON ALL WORKING DOORS ACCORDING TO MANUFACTURER'S INSTRUCTIONS.

© 2010
MASCO Cabinetry, LLC
All Rights Reserved

Merillat.

Designed: 11/24/2010
Printed: 12/6/2010

2 OF 5

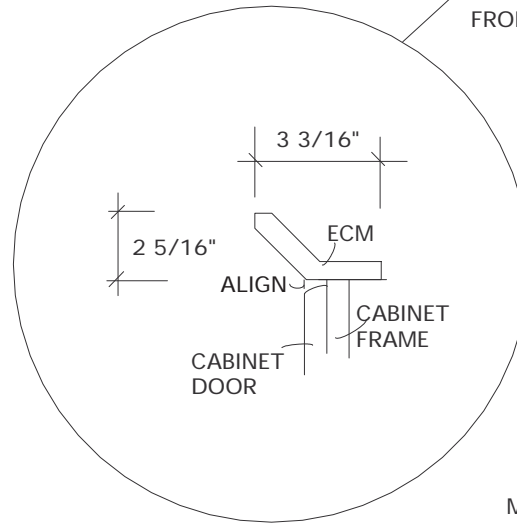
KUPPERSMITH_MW

ELEVATION

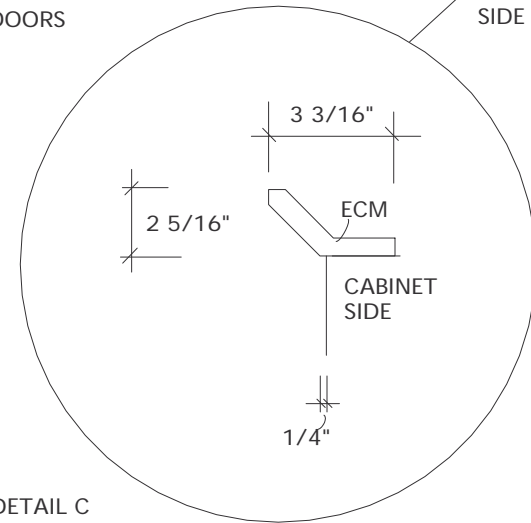
Drawing #: 1

Scale : 0 3/8" = 1'

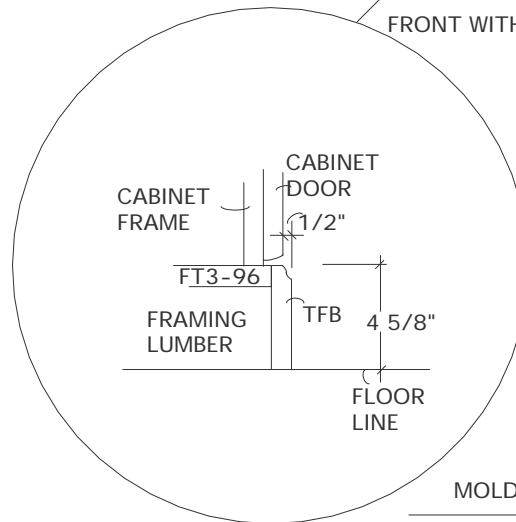
TOP MOLDING A
FRONT WITH DOORS



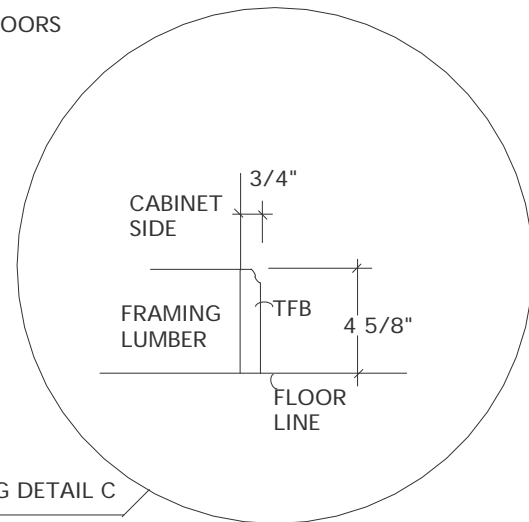
TOP MOLDING A
SIDE NO DOORS



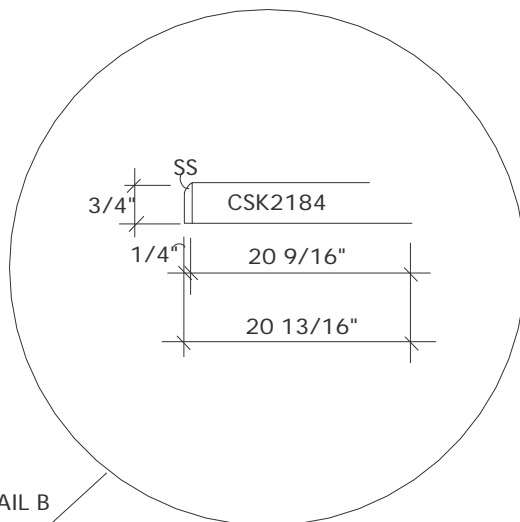
MOLDING DETAIL C
FRONT WITH DOORS



MOLDING DETAIL C
SIDE NO DOORS



CSK2184 DETAIL B



MOLDING DETAILS

© 2010
MASCO Cabinetry, LLC
All Rights Reserved

Merillat.

Designed: 11/24/2010
Printed: 12/6/2010

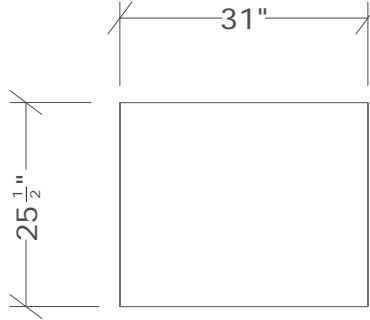
3 OF 5

KUPPERSMITH_MW

MOLDING

Drawing #: 1

Scale : 0 3/8" = 1'



COUNTERTOP: GOLDEN HILL GRANITE

THIS DRAWING IS FOR CONCEPT USE ONLY. ALL DIMENSIONS NEED TO BE FIELD VERIFIED FROM THE INSTALLED CABINETRY. IT IS THE RESPONSIBILITY OF THE COUNTERTOP FABRICATOR TO FIELD VERIFY ALL DIMENSIONS BASED ON MATERIAL TYPE AND SPECIFICATIONS.

COUNTERTOP DETAILS

© 2010
MASCO Cabinetry, LLC
All Rights Reserved

Merillat.

Designed: 11/24/2010
Printed: 12/1/2010

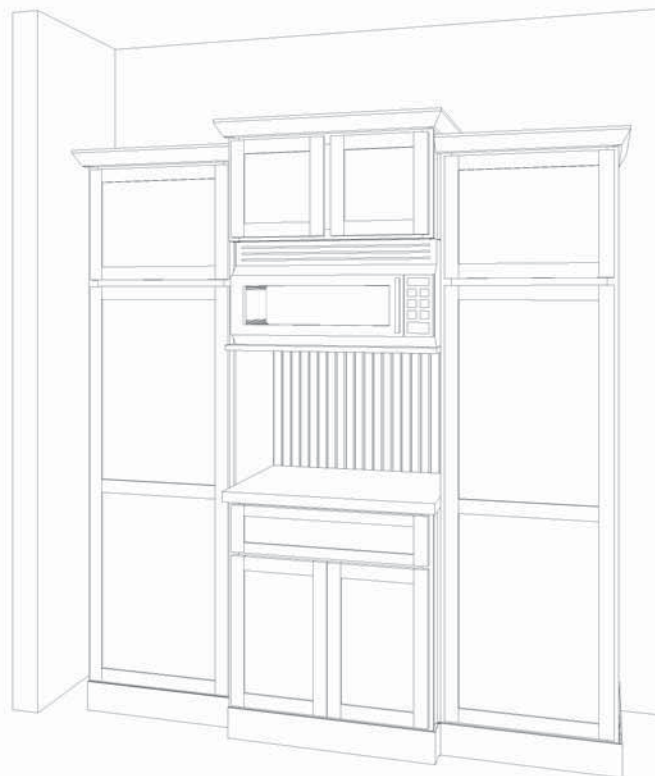
4 OF 5

KUPPERSMITH_MW

COUNTERTOP

Drawing #: 1

Scale : 0 1/2" = 1'



© 2010
MASCO Cabinetry, LLC
All Rights Reserved


Merillat.

Designed: 11/24/2010
Printed: 12/6/2010

5 OF 5

KUPPERSMITH_MW COFFEE PANTRY.kit

FLOOR PLAN

Drawing #: 1