

KUPPERSMITH HOUSE
MASTER BATH

MERILLAT CABINETRY

TOLANI MAPLE DOORSTYLE
CHIFFON FINISH

HARDWARE:

#HK137 SATIN NICKEL KNOB

-OR-

#HP103 SATIN NICKEL SUITCASE PULL

TOE BASE:

2-TKC-VENEER

1-TFB

MISCELLANEOUS:

4-SADO

1-TUK

2-SS

FLOOR PLAN

© 2010
MASCO Cabinetry
All Rights Reserved

Merillat.

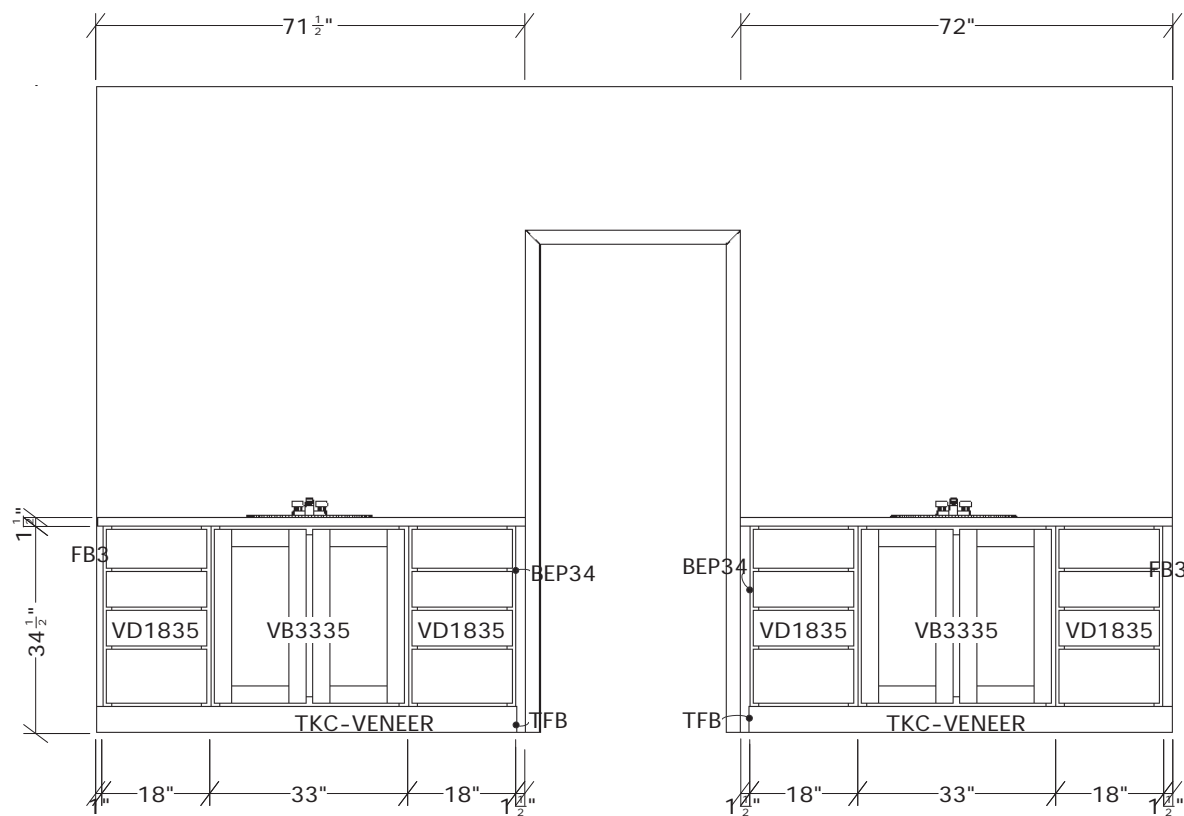
Designed: 11/28/2010
Printed: 11/29/2010

1 OF 4

KUPPERSMITH_MASTE FLOOR PLAN

Drawing #: 1

Scale : 0 1/2" = 1'



INSTALLATION NOTES:

FB3: CUT TO 1" WIDE. INSTALL LEFT OF LEFTMOST VD1835, EVEN WITH FACE FRAME.

2-BEP34: CUT EACH TO 20 1/4" WIDE AND INSTALL WHERE NOTED, BEHIND FACE FRAME.

TFB: MITER AT EACH CORNER AND INSTALL WHERE NOTED.

FB3: CUT TO 1 1/2" WIDE. INSTALL RIGHT OF RIGHTMOST VD1835, EVEN WITH FACE FRAME.

SADO: INSTALL SOFTACTION DOOR CLOSING HARDWARE ON ALL WORKING DOORS ACCORDING TO MANUFACTURER'S INSTRUCTIONS.

© 2010
MASCO Cabinetry
All Rights Reserved

Merillat.

Designed: 11/28/2010
Printed: 11/29/2010

2 OF 4

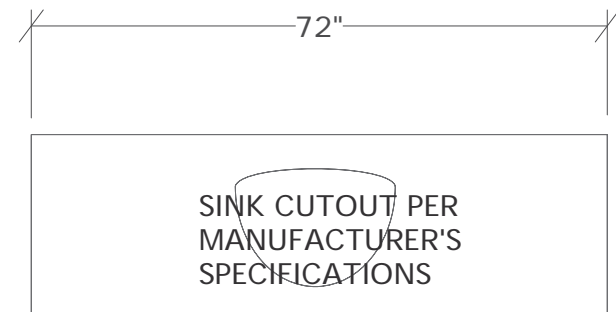
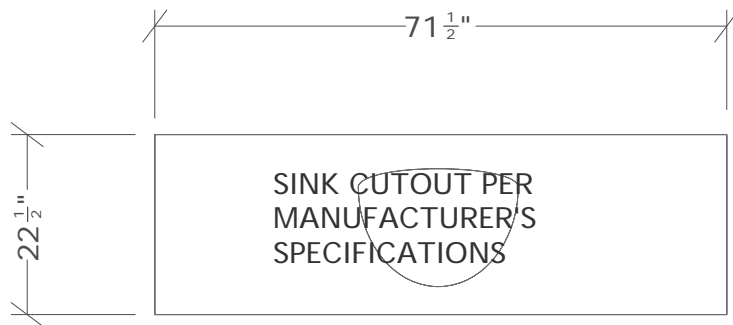


© 2010
MASCO Retail Cabinet Group, LLC
All Rights Reserved



Designed: 11/28/2010
Printed: 11/29/2010

3 OF 4



VANITY TOPS: GOLDEN HILL GRANITE

THIS DRAWING IS FOR CONCEPT USE ONLY. ALL DIMENSIONS NEED TO BE FIELD VERIFIED FROM THE INSTALLED CABINETRY. IT IS THE RESPONSIBILITY OF THE COUNTERTOP FABRICATOR TO FIELD VERIFY ALL DIMENSIONS BASED ON MATERIAL TYPE AND SPECIFICATIONS.

COUNTERTOP DETAILS

© 2010
MASCO Cabinetry, LLC
All Rights Reserved


Merillat.

Designed: 11/28/2010
Printed: 11/30/2010

4 OF 4

KUPPERSMITH_MASTE

COUNTERTOP

Drawing #: 1

Scale : 0 1/2" = 1'