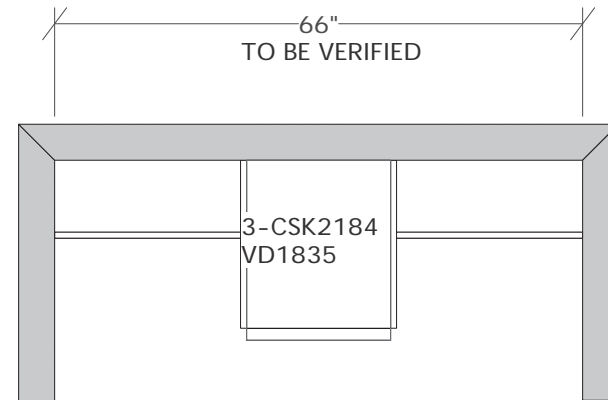


HERS



HIS

KUPPERSMITH HOUSE
HIS/HER CLOSETS

MERILLAT CABINETRY


TOLANI MAPLE DOORSTYLE
CHIFFON FINISH

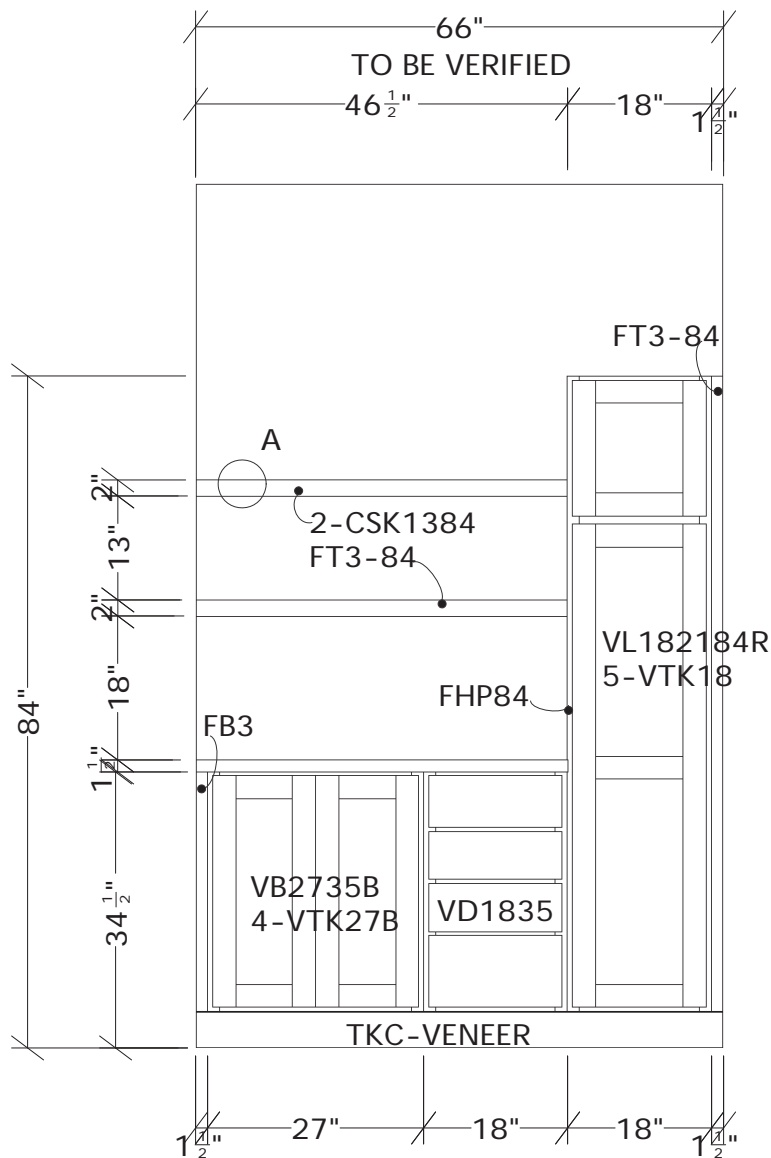
HARDWARE:
#HK137 SATIN NICKEL KNOB
-OR-
#HP103 SATIN NICKEL SUITCASE PULL

TOE BASE:
1-TKC-VENEER

MISCELLANEOUS:
4-SADO
1-TUK
2-SS

FLOOR PLAN

© 2010 MASCO Cabinetry, LLC All Rights Reserved	 Merillat.	Designed: 11/30/2010 Printed: 11/30/2010	
		1 OF 6	
KUPPERSMITH_HIS	FLOOR PLAN	Drawing #: 1	Scale : 0 1/2" = 1'



HERS

INSTALLATION NOTES:

FT3-84: CUT TO 1 1/2" WIDE. INSTALL RIGHT OF VL182184R, EVEN WITH FACE FRAME.

FHP84: CUT TO 20 1/4" WIDE. INSTALL LEFT OF VL182184R, BEHIND FACE FRAME.

2-CSK1384 AND 2-FT3-84: CUT EACH CSK1384 TO 46 1/2" WIDE. CUT EACH FT3-84 TO 46 1/2" WIDE X 2" HIGH. FINISH FRONT EDGE OF EACH CSK1384 WITH 2" PIECE OF FT3-84. USE 1" PIECE OF FT3-84 AT BACK WALL FOR SUPPORT. SEE DETAIL "A" ON MOLDING DETAILS PAGE.

FB3: CUT TO 1 1/2" WIDE. INSTALL LEFT OF VB2735B, EVEN WITH FACE FRAME.

4-VTK27B: SPACE EVENLY AND INSTALL IN VB2735B ACCORDING TO MANUFACTURER'S INSTRUCTIONS.

5-VTK18: SPACE EVENLY AND INSTALL IN BOTTOM SECTION OF VL182184R ACCORDING TO MANUFACTURER'S INSTRUCTIONS.

SADO: INSTALL SOFTACTION DOOR CLOSING HARDWARE ON ALL WORKING DOORS ACCORDING TO MANUFACTURER'S INSTRUCTIONS.

© 2010
MASCO Cabinetry, LLC
All Rights Reserved

Merillat.

Designed: 11/30/2010
Printed: 12/6/2010

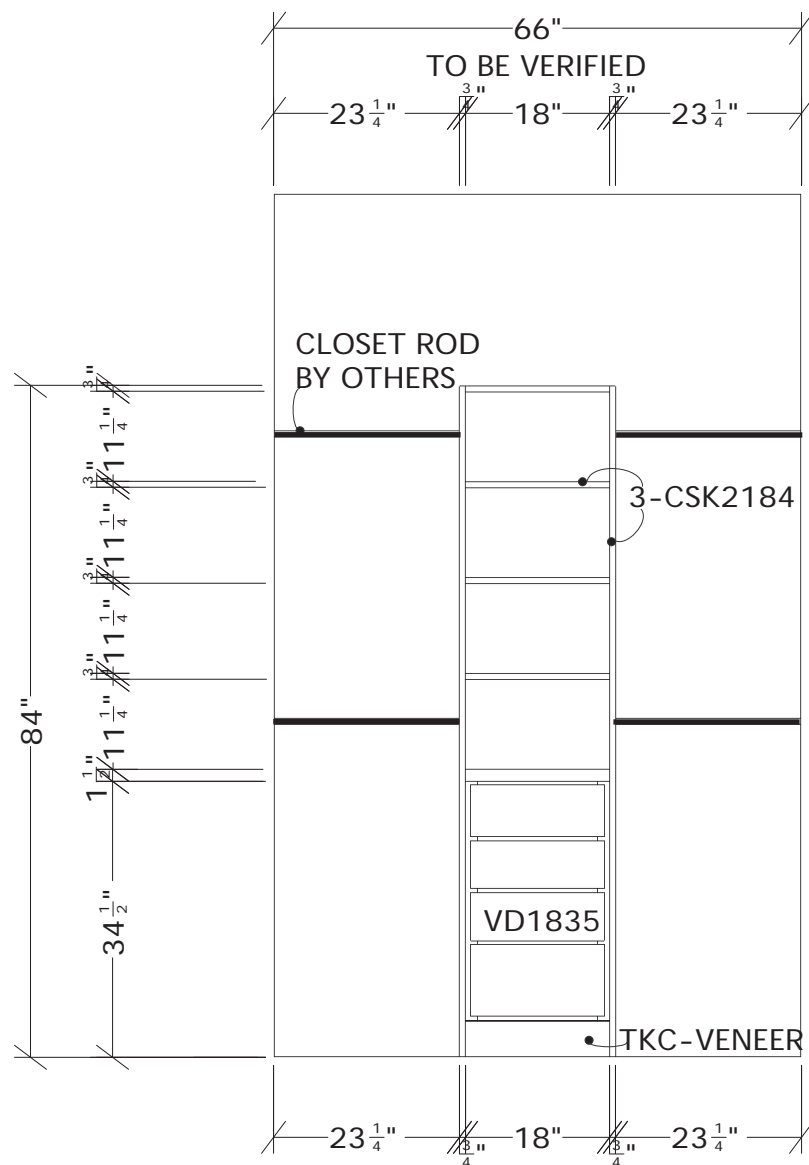
2 OF 6

KUPPERSMITH_HIS

ELEVATION 1

Drawing #: 1

Scale : 0 1/2" = 1'



INSTALLATION NOTES:

VD1835: CENTER UNIT ON WALL.

2-CSK2184: INSTALL LEFT AND RIGHT OF VD1835
(TO CREATE SIDES).

1-CSK2184: CUT INTO FOUR PIECES, EACH
MEASURING 18" WIDE X 21" DEEP. SPACE EVENLY
AND INSTALL ABOVE VD1835 WHERE NOTED.



HIS

© 2010
MASCO Cabinetry, LLC
All Rights Reserved

Merillat.

Designed: 11/30/2010
Printed: 11/30/2010

3 OF 6

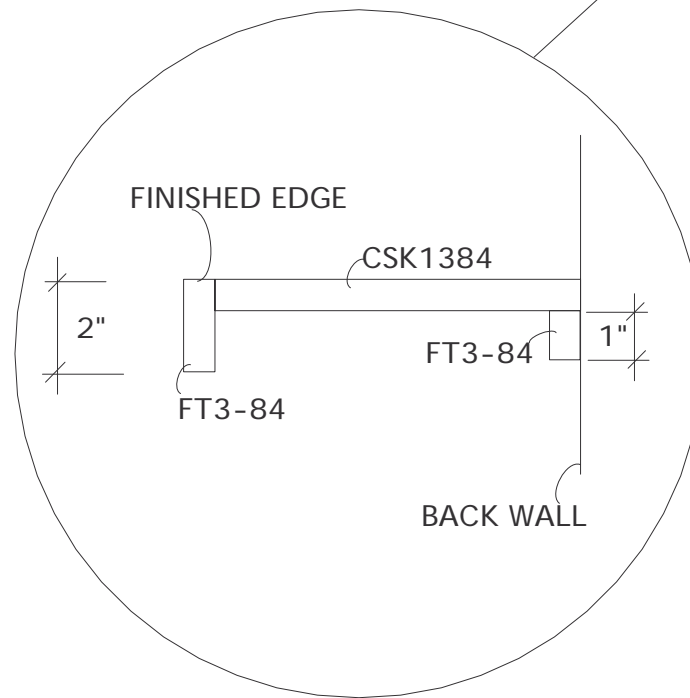
KUPPERSMITH_HIS

ELEVATION 2

Drawing #: 1

Scale : 0 1/2" = 1'

MOLDING DETAIL A



MOLDING DETAILS

© 2010
MASCO Cabinetry, LLC
All Rights Reserved

Merillat.

Designed: 11/30/2010
Printed: 12/6/2010

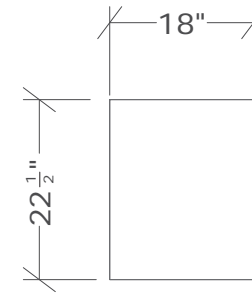
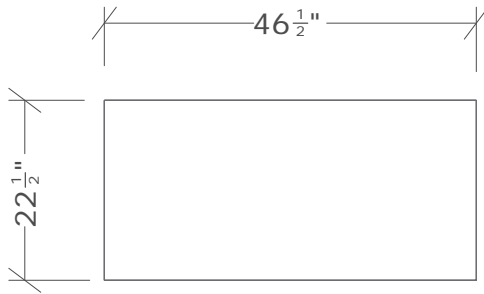
4 OF 6

KUPPERSMITH_HIS

MOLDING

Drawing #: 1

Scale : 0 1/2" = 1'



COUNTERTOPS: ZIRCON QUARTZ

THIS DRAWING IS FOR CONCEPT USE ONLY. ALL DIMENSIONS NEED TO BE FIELD VERIFIED FROM THE INSTALLED CABINETRY. IT IS THE RESPONSIBILITY OF THE COUNTERTOP FABRICATOR TO FIELD VERIFY ALL DIMENSIONS BASED ON MATERIAL TYPE AND SPECIFICATIONS.

COUNTERTOP DETAILS

© 2010
MASCO Cabinetry, LLC
All Rights Reserved

Merillat.

Designed: 11/30/2010
Printed: 11/30/2010

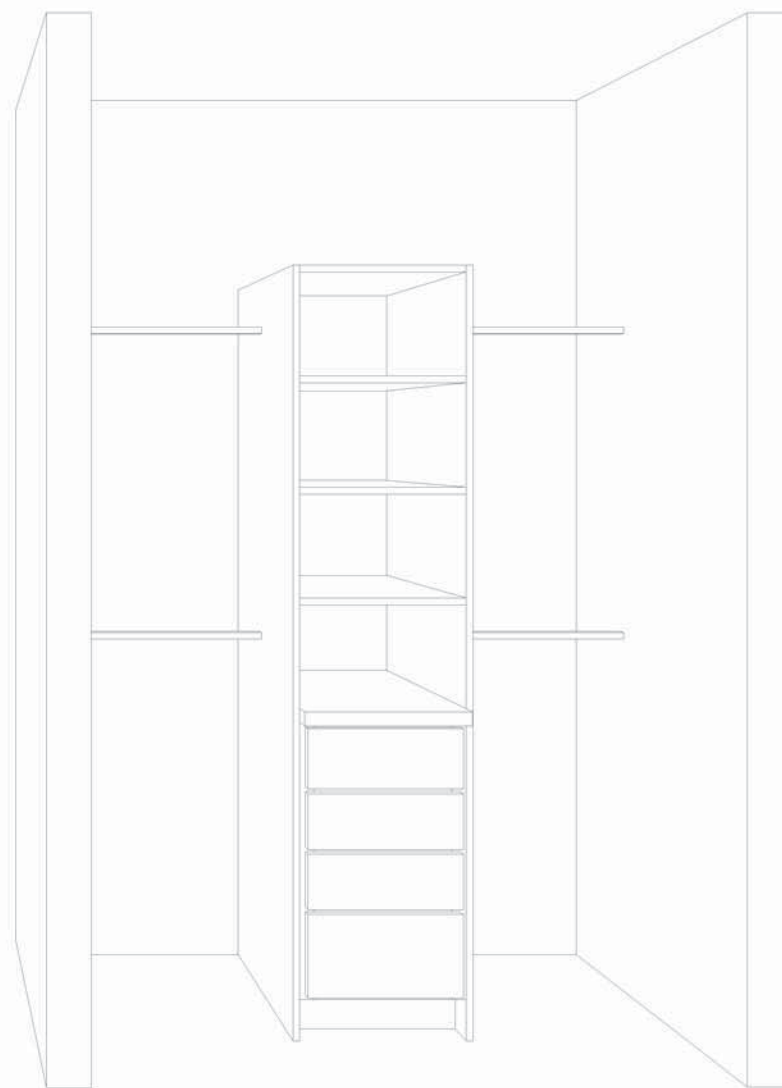
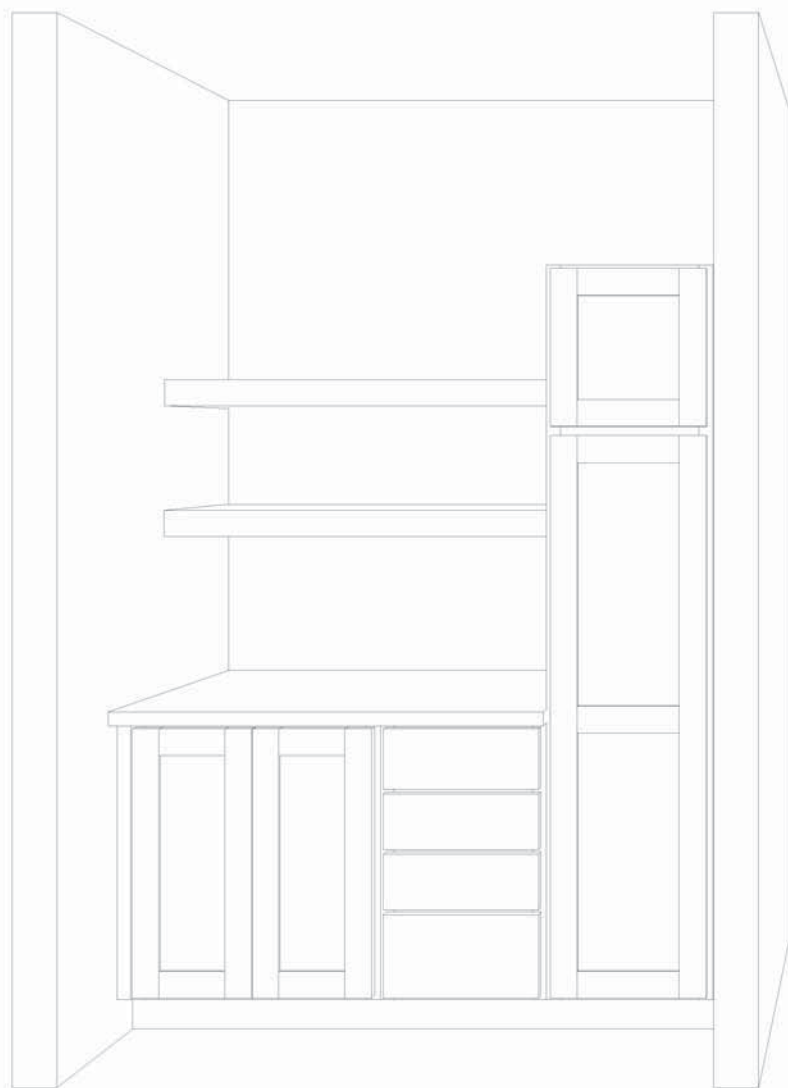
5 OF 6

KUPPERSMITH_HIS

COUNTERTOP

Drawing #: 1

Scale : 0 1/2" = 1'



© 2010
MASCO Cabinetry, LLC
All Rights Reserved


Merillat.

Designed: 11/30/2010
Printed: 11/30/2010

6 OF 6

KUPPERSMITH_HIS HER CLOSETS.kit

Fp 7

Drawing #: 1