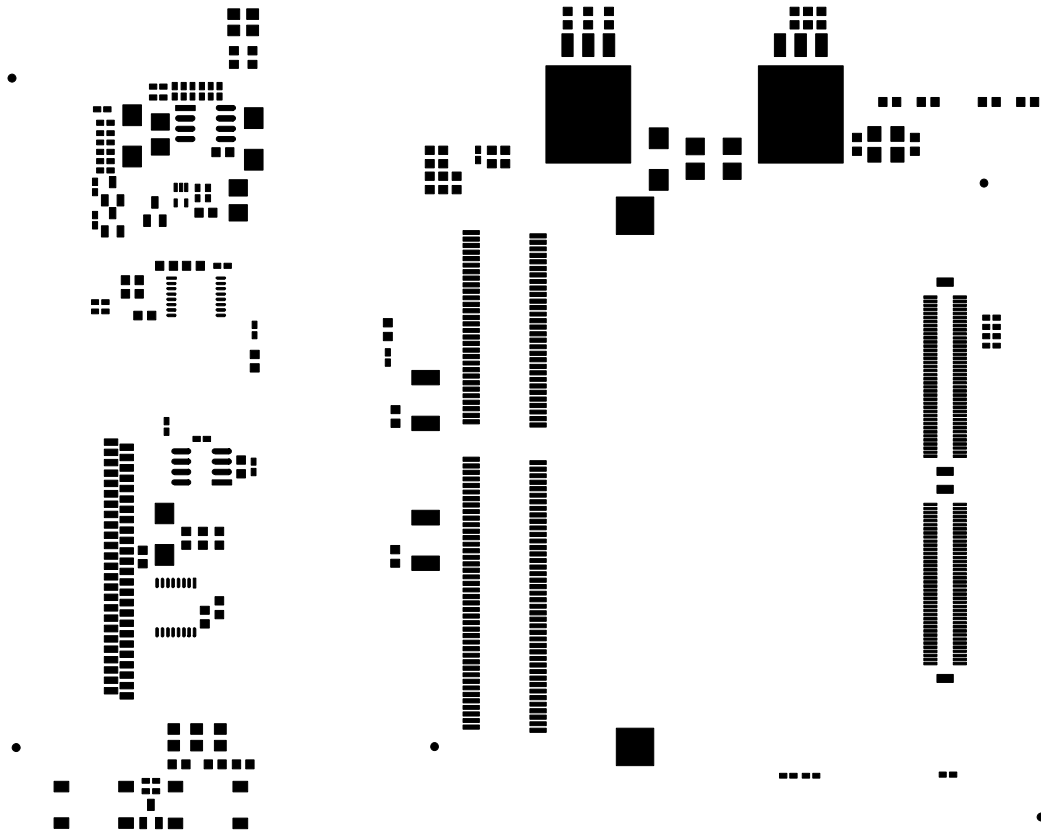


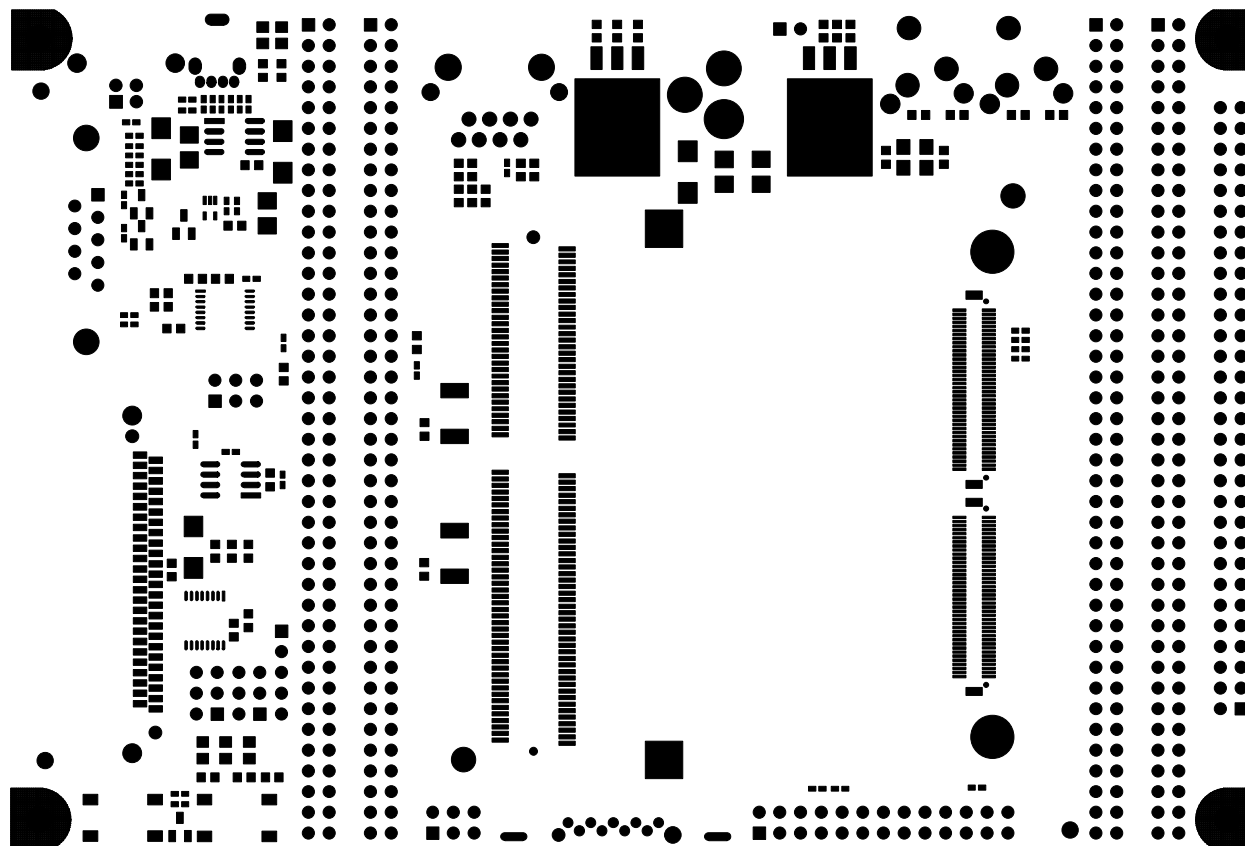
SILKSCREEN TOP SIDE

LOGIC PRODUCT DEVELOPMENT  
 LCF-APP-10  
 1005266 REV A  
 11-15-05



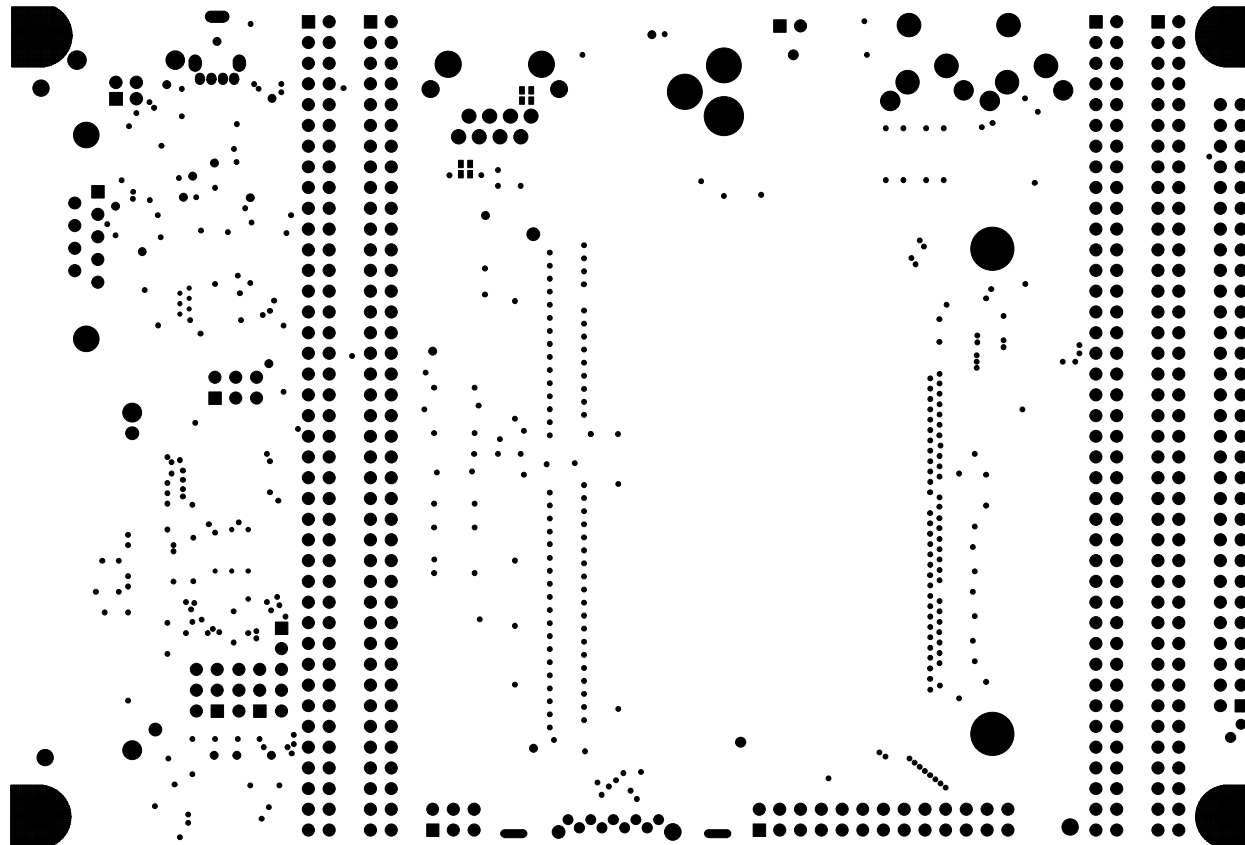
SOLDER PASTE TOP SIDE

LOGIC PRODUCT DEVELOPMENT  
LDE-APP-10  
1005266 REV A  
11-15-05



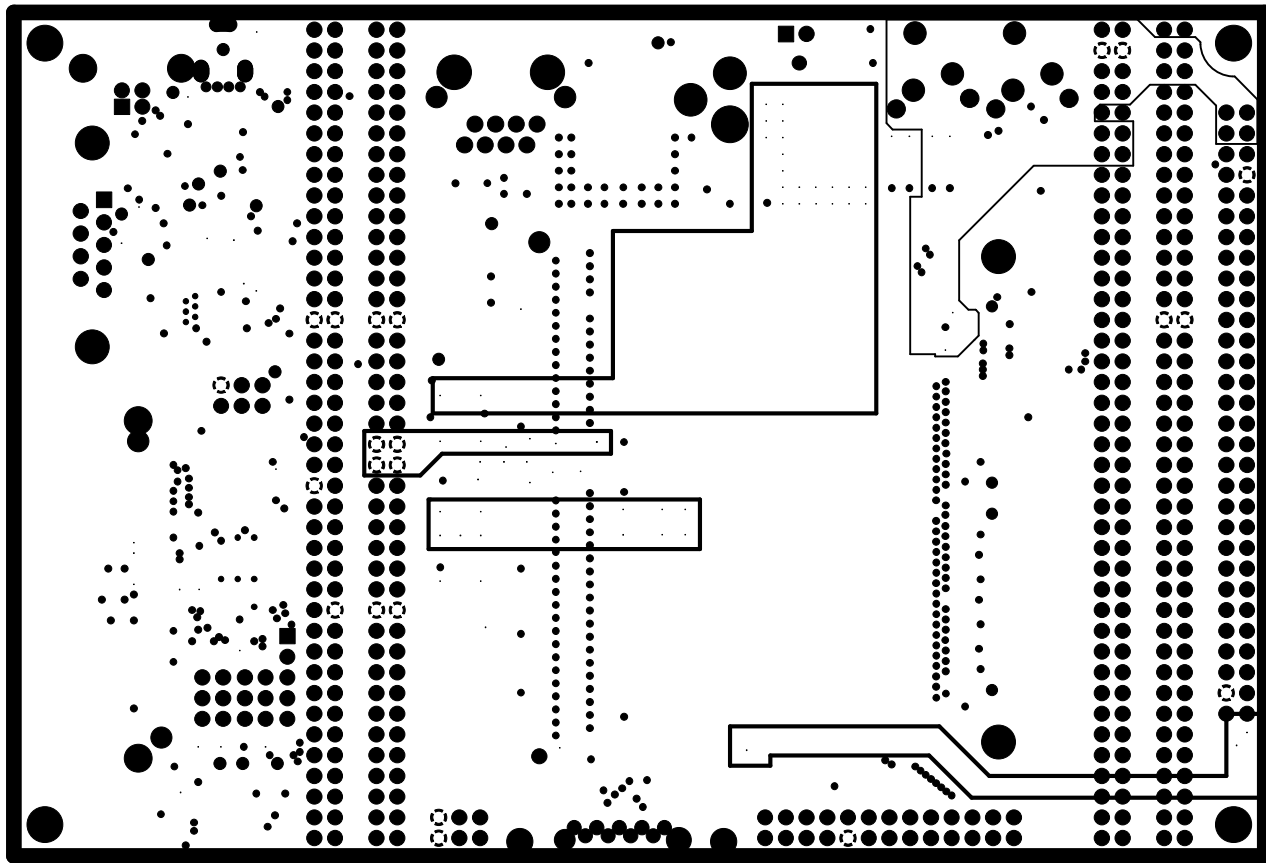
SOLDER MASK TOP SIDE

LOGIC PRODUCT DEVELOPMENT  
LCE-APP-10  
1005266 REV A  
11-15-05



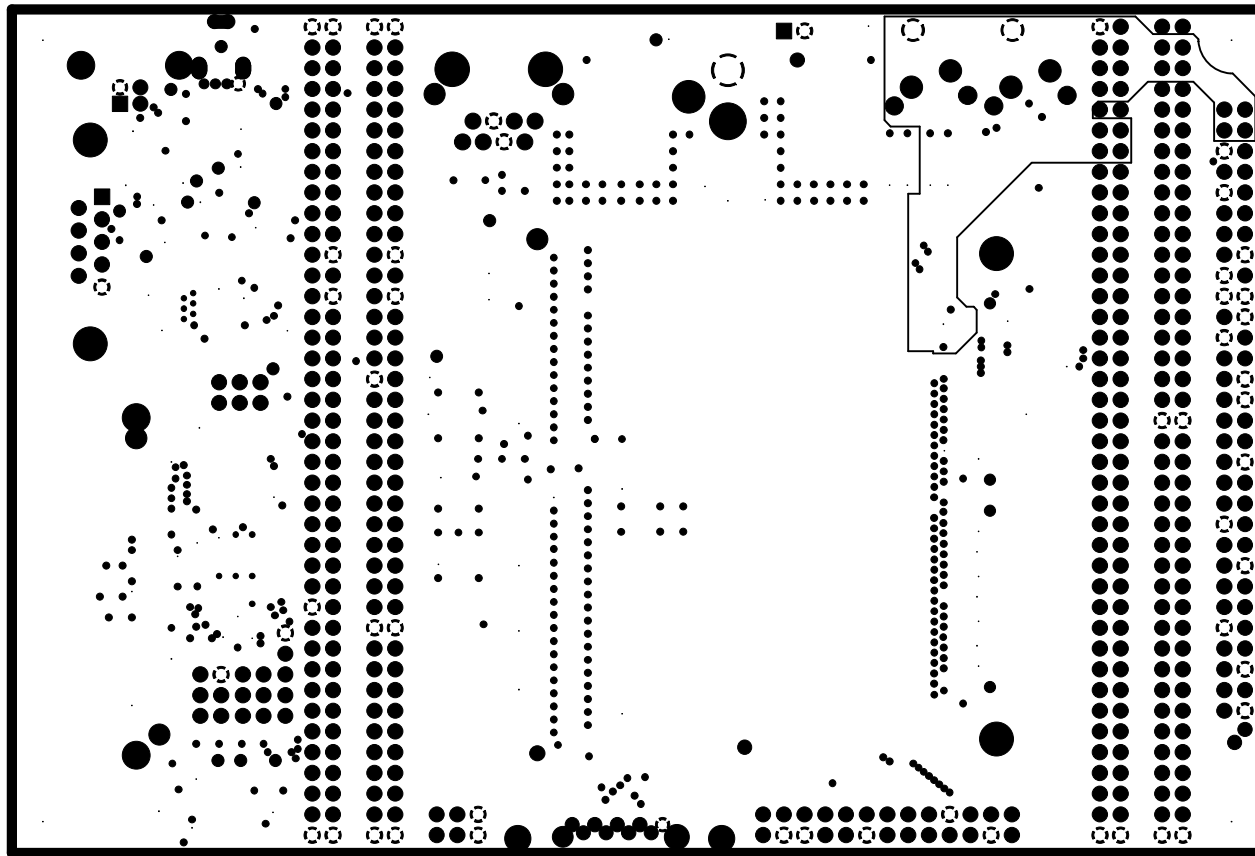
SOLDER MASK BOTTOM SIDE

LOGIC PRODUCT DEVELOPMENT  
LCE-APP-10  
1005266 REV A  
11-15-05



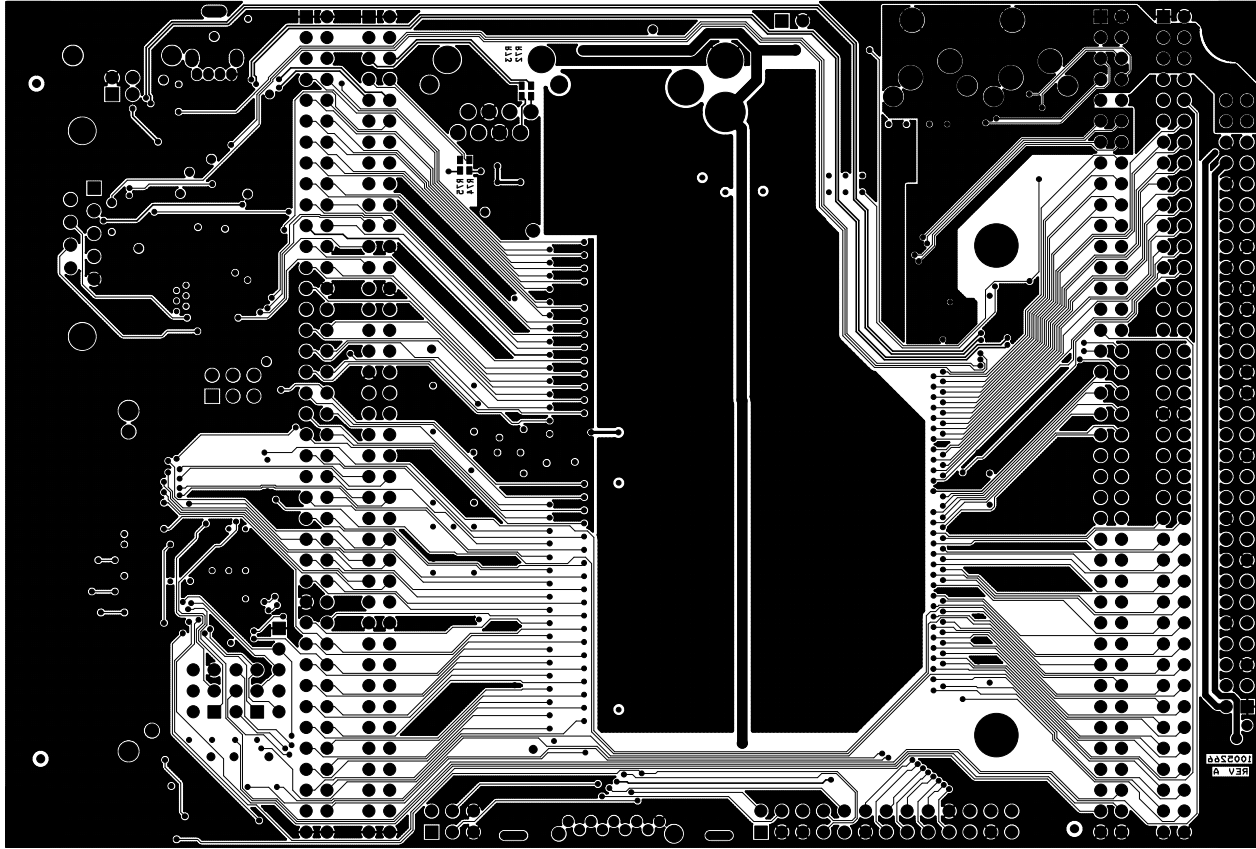
LAYER 2 PLANE POWER

LOGIC PRODUCT DEVELOPMENT  
LCE-APP-10  
1005266 REV A  
11-15-05



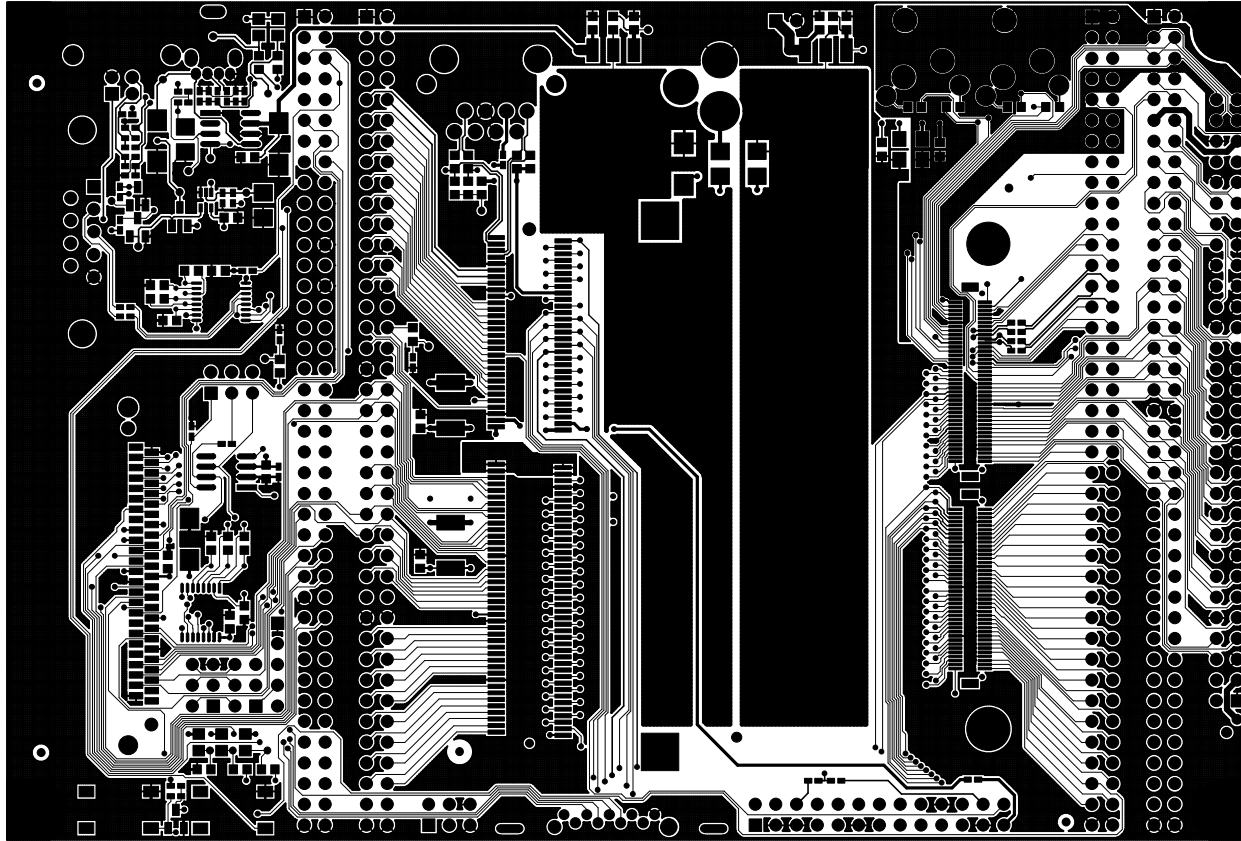
LAYER 3 PLANE GND

LOGIC PRODUCT DEVELOPMENT  
LCE-APP-10  
1005266 REV A  
11-15-05



LAYER 4 CIRCUIT BOTTOM SIDE

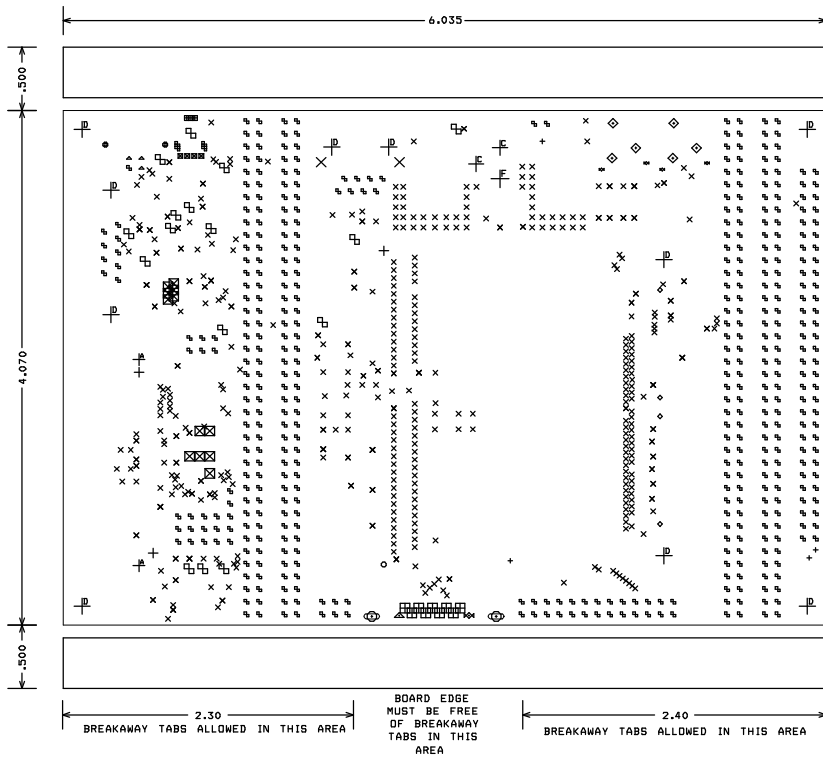
LOGIC PRODUCT DEVELOPMENT  
LCE-APP-10  
1005266 REV A  
11-15-05



LAYER 1 CIRCUIT TOP SIDE

LOGIC PRODUCT DEVELOPMENT  
LCE-APP-10  
1005266 REV A  
11-15-05





DRILL  
 LOGIC PRODUCT DEVELOPMENT  
 LCE-APP-10  
 1005266 REV A  
 11-15-05

**NOTE:**

1. MATERIAL SELECTION:  
 4 LAYER, EPOXY GLASS, NEMA GRADE FR-4, 0.062 +/- 0.007 THICK.  
 1/2 OZ. (MINIMUM) COPPER CLADDING WITH 5M09C.
  2. FINISH ON ALL SOLDERABLE SURFACES TO BE:  
 ENIG (ELECTROLESS NICKEL IMMERSION GOLD) - (GOLD BODY).  
 OSP - ENTEK PLUS 106A.  
 WHITE TIN.
  3. SOLDER RESIST: THE USE OF SOLDER RESIST COATING SHALL BE IN ACCORDANCE WITH THE REQUIREMENTS OF IPC-5M-840. ALL SOLDERABLE SURFACES ARE TO BE FREE OF SOLDER RESIST. COLOR - BLUE. USE LIQUID PHOTOIMAGABLE RESIST.
  4. SILKSCREEN: USE WHITE NON-CONDUCTIVE INK. ALL COMPONENT AND TESTPOINT LANDS ARE TO BE FREE OF INK.
  5. MANUFACTURER'S IDENTIFICATION: ADD TO SILKSCREEN ON BOTTOM SIDE.
  6. ELECTRICAL BARE BOARD TEST REQUIRED.
  7. DRILL SIZES ARE FINISHED SIZE AFTER PLATING.
  15. THE PRINTED CIRCUIT BOARDS MANUFACTURED TO THIS DRAWING MUST BE ROHS COMPLIANT.
- LAMINATE AND PREPREG SHALL BE POLYCLAD 370HR.  
 ALTERNATIVE MATERIAL MUST BE APPROVED BY LOGIC/MDC PRIOR TO USE.

DRILL CHART				
SYM	DIAM	TOL	QTY	NOTE
☒	0.010		12	
x	0.012	+0.000/-0.012	421	PLATED
☐	0.016		16	
+	0.026	+/- 0.003	4	PLATED
o	0.026	+/- 0.003	4	NDN-PLATED
☒	0.031		9	
■	0.032	+/- 0.003	4	PLATED
■	0.035	+/- 0.003	3	PLATED
▲	0.036	+/- 0.003	3	PLATED
○	0.039		2	NDN-PLATED
⊖	0.040	+/- 0.003	461	PLATED
o	0.040	+/- 0.003	1	NDN-PLATED
∞	0.052	+/- 0.003	4	PLATED
▲	0.063		1	NDN-PLATED
X	0.064	+/- 0.003	2	PLATED
+	0.064	+/- 0.003	3	NDN-PLATED
⊖	0.072	+/- 0.003	6	PLATED
⊖	0.085		1	NDN-PLATED
⊖	0.091	+/- 0.003	2	NDN-PLATED
⊖	0.095	+/- 0.003	2	NDN-PLATED
⊖	0.120	+/- 0.003	2	PLATED
⊖	0.128	+/- 0.003	10	PLATED
⊖	0.140	+/- 0.003	1	PLATED
TOTAL			974	

SLOT - 3.40x1.0mm

