



# Installing the LoCE\_SH7727-20\_beta\_002 BSP

## Application Note 188

Mike Aanenson

Logic Product Development

Published: December 2003

### Abstract

This application note explains how to download and install the Logic Product Development (LPD) LoCE\_SH7727-20\_beta\_002.msi file for Windows CE® 4.2.

### REVISION HISTORY

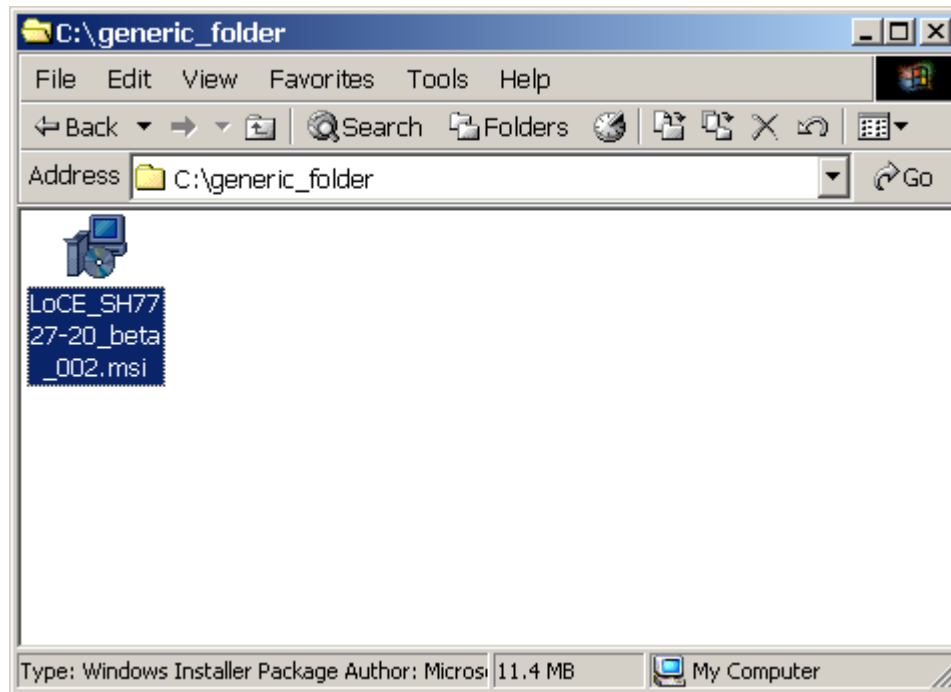
REV	EDITOR	DESCRIPTION	APPROVAL	DATE
A	Mike Aanenson	Release	MA	12/11/03

# 1 Introduction

In order to download and install this BSP you must have Platform Builder 4.2 on your machine.

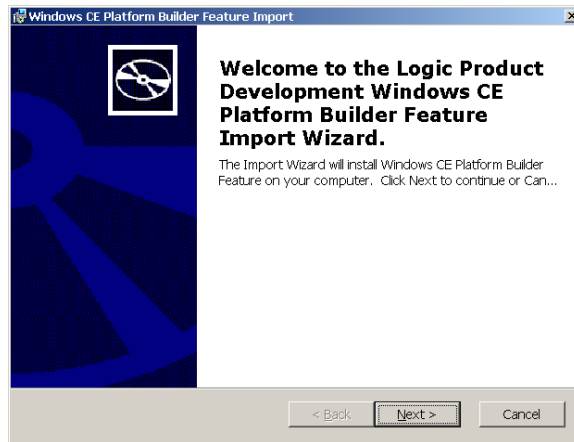
# 2 Download and Install the BSP

1. Download LoCE\_SH7727-20\_beta\_002.msi from the Logic Product Development (LogicPD) download site.
2. Run the .msi file on your PC. Since Platform Builder automatically installs the file in the proper folder on your machine, you will not need to specify the location of the .msi file.



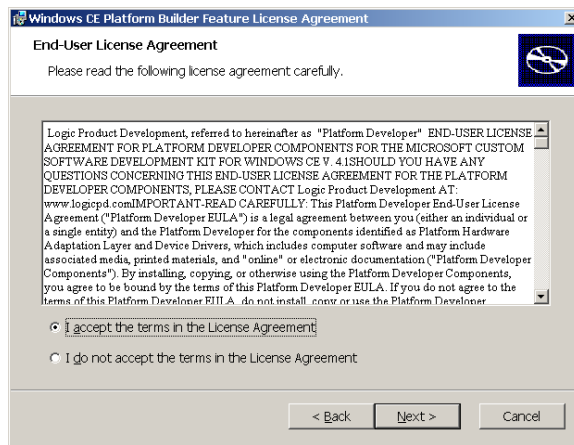
*Figure 1: Run LoCE\_SH7727-20\_beta\_002.msi*

3. At the 'Welcome Window', select 'Next.'



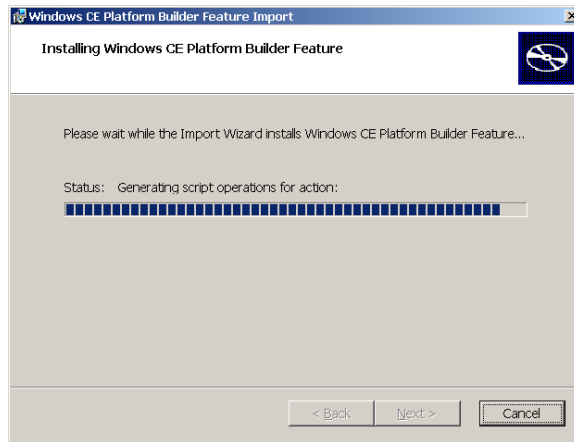
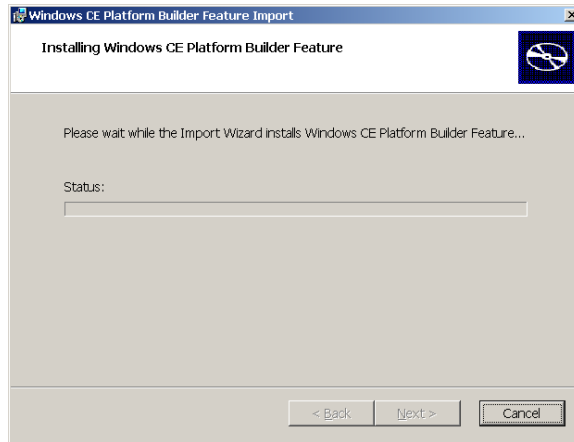
**Figure 2: Welcome Window**

4. At the 'End-User License Agreement' window, read the text thoroughly 😊, select 'I Accept,' and continue by clicking on 'Next.'

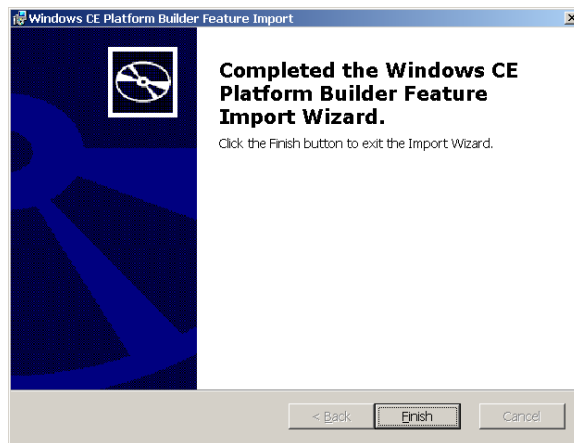


**Figure 3: End User License Agreement**

5. The 'Installation Status' window will then appear (Figure 4). After the file is installed, select 'Finish' (Figure 5).

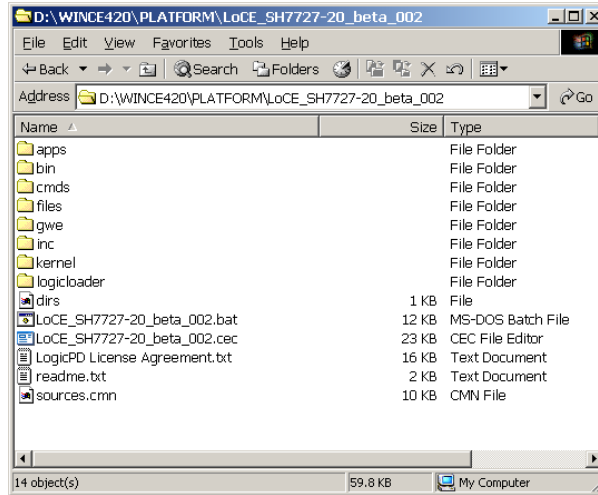


**Figure 4: Installation Status**



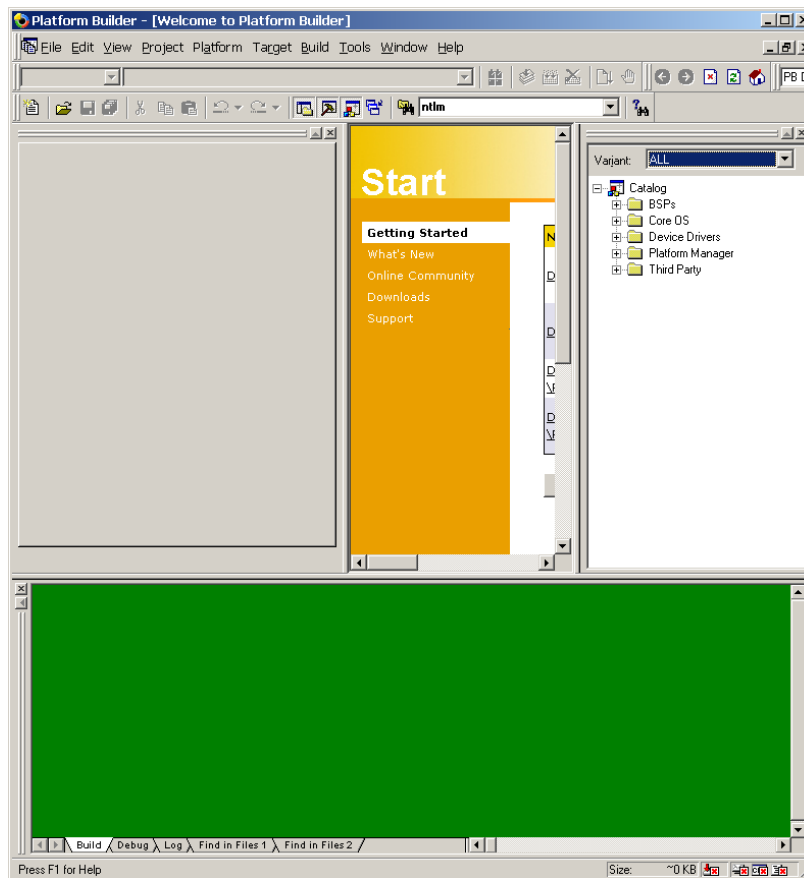
**Figure 5: Select Finish**

6. A 'LoCE\_SH7727-20\_beta\_002' folder will be created in your \WINCE420\PLATFORM folder. Note: open the readme.txt file for additional information about the BSP files.



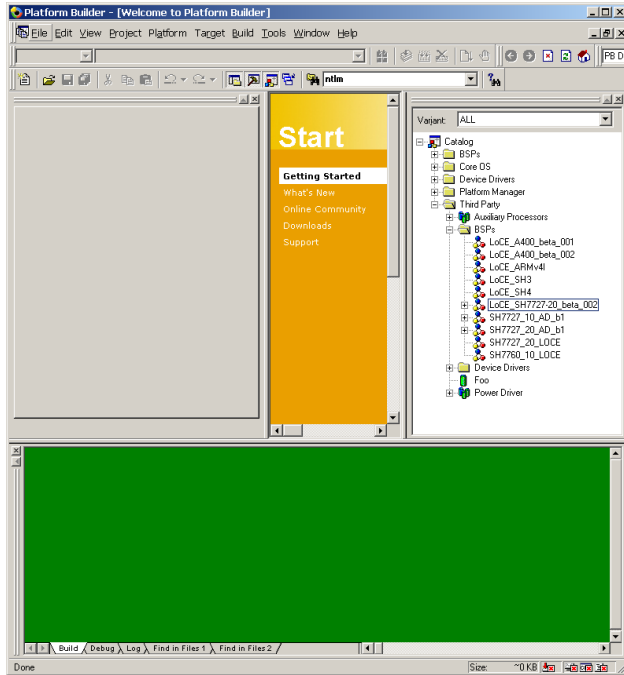
**Figure 6: A 'LoCE\_SH7727-20\_beta\_002' Folder Will be Created**

7. Open Platform Builder.



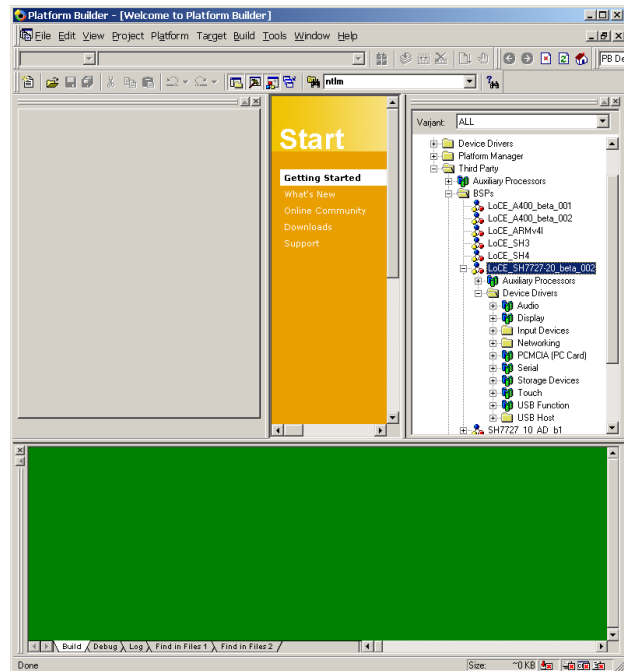
**Figure 7: Platform Builder (your windows may differ from those presented in this image)**

- The .msi file installs the BSP into Platform Builder. You can find it in the 'Catalog' under 'Third Party/BSPs/LoCE\_SH7727-20\_beta\_002'.



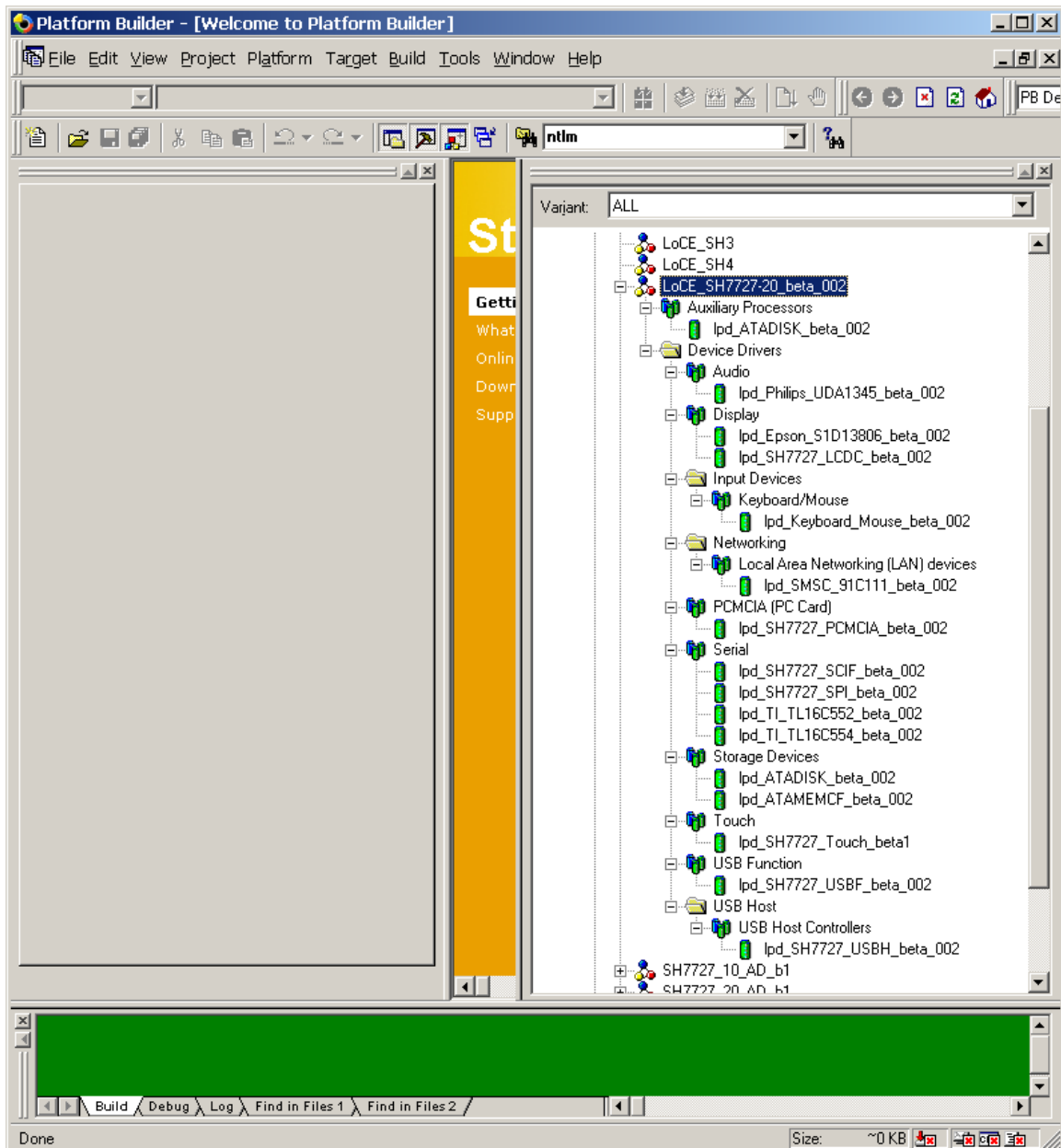
**Figure 8: Locate LoCE\_SH7727-20\_beta\_002 under 'Third Party'**

- The feature groups-- a grouping of OS components-- are located in LoCE\_SH7727-20\_beta\_002 sub-directories.



**Figure 9: Locate Feature Groups in the Sub-directories**

10. The drivers for the BSP are listed under each feature.



**Figure 10: Drivers for the BSP are Located under each Feature**

### 3 Summary

After successfully installing LoCE\_SH7727-20\_beta\_002.msi from the Logic Product Development downloads site, you are now ready to create a new platform using this BSP.