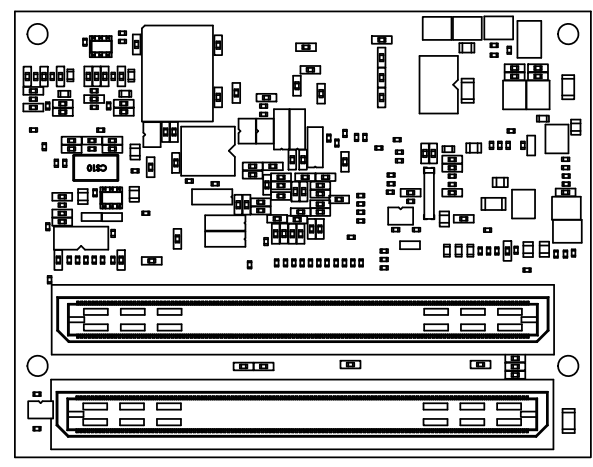
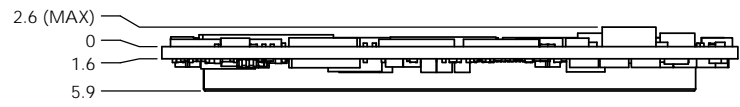
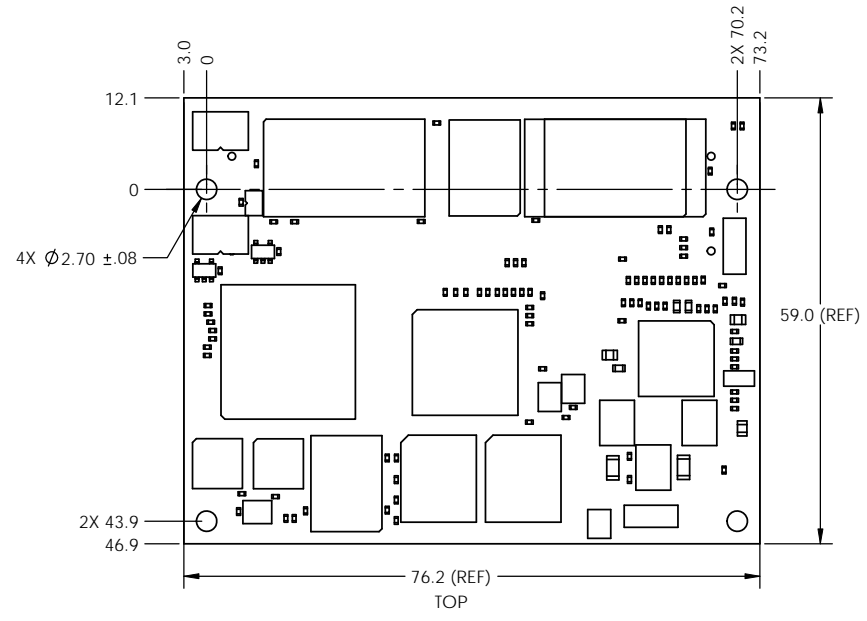
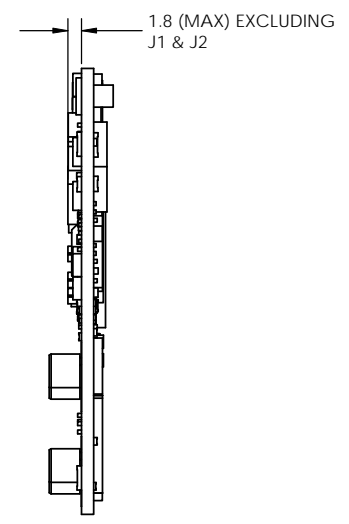


REVISIONS			
REV.	ECO NUMBER	DESCRIPTION	DATE
A	-	INITIAL RELEASE	07.30.08
B	-	UPDATED FOOTPRINT DIMENSIONING SCHEME	3.19.09



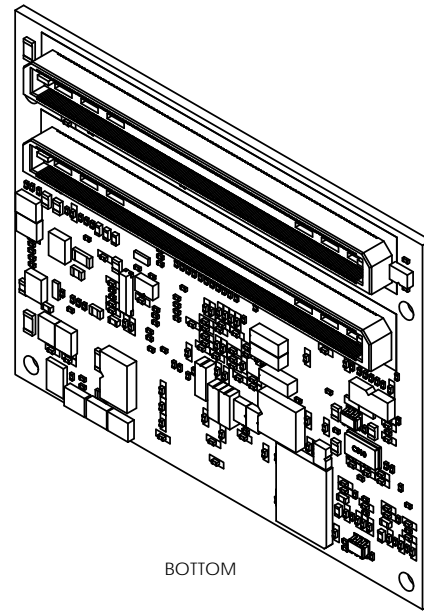
BOTTOM

- NOTES:
- 1. WITHIN LAYOUT AREA OF SOM-LV MAXIMUM COMPONENT HEIGHT ON APPLICATION BASEBOARD IS 1.0 MM
 - 2. BASEBOARD CONNECTOR SPECIFICATION: SAMTEC BSH-120-01-L-D-A
 - 3. DO NOT SCALE DRAWING

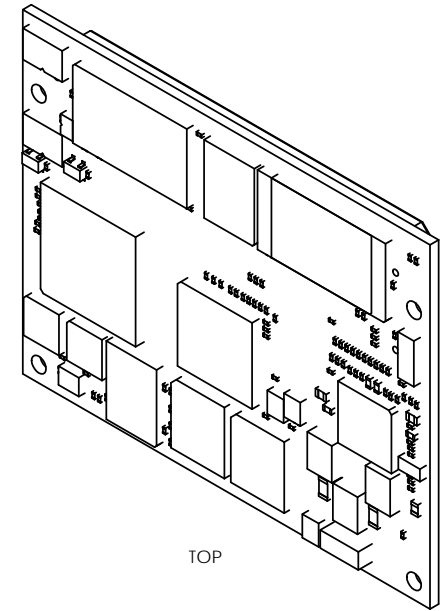


THIS DRAWING PREPARED IN ACCORDANCE WITH ASME Y14.5-2000
 ALL DIMENSIONS ARE IN MILLIMETERS UNLESS OTHERWISE SPECIFIED
 TOLERANCES UNLESS OTHERWISE SPECIFIED
 X ± 0.5
 X.X ± 0.2
 X.XX ± 0.1
 X' ± 1"

ENG MHC CHECK KAG MCR PMH DATE	DATE 07.30.08 DATE 07.30.08 DATE 07.30.08 DATE -	<p>411 N. Washington Ave, Suite 400 Minneapolis, MN 55401 T: 612.872.9486 F: 612.872.9489 I: www.logicpd.com</p>	SIZE C	TITLE i. MX31 SOM-LV	REV B
			SCALE 2:1	DWG NO 1010496	SHEET 1 OF 2

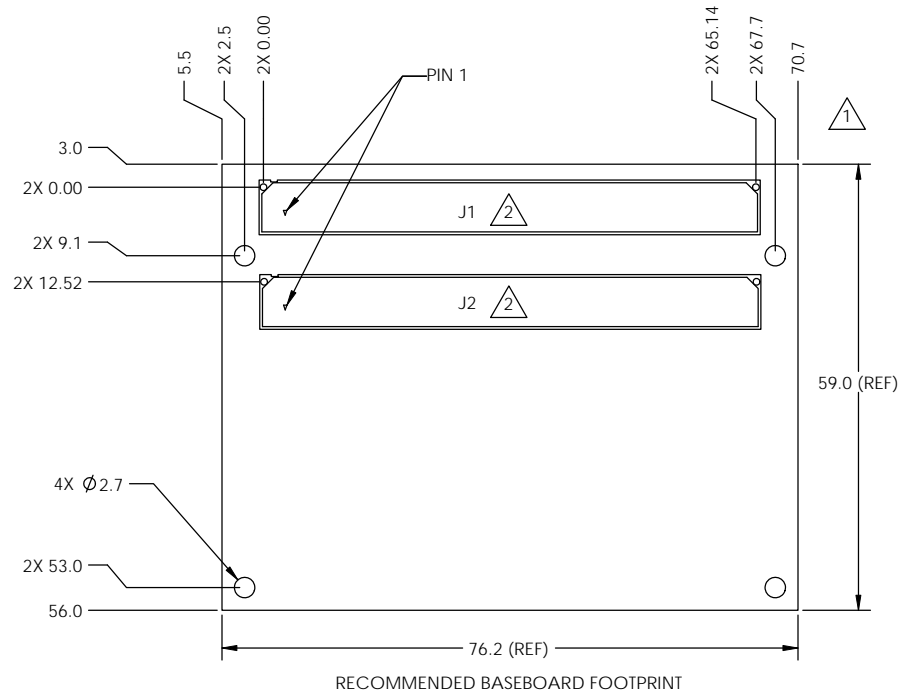


BOTTOM



TOP

ISOMETRIC VIEWS
FOR REFERENCE ONLY



RECOMMENDED BASEBOARD FOOTPRINT

SIZE C	TITLE i.MX31 SOM-LV	REV B
SCALE 2:1	DMG NO 1010496	SHEET 2 OF 2