

Items used in this QuickStart Guide.
(Complete kit contents provided on the included Packing List.)



Baseboard



4.3" LCD



Power Supply & Cord
(use power cord specific to your region)



OMAP-L138
SOM-M1



SD Card
(Linux Demo)

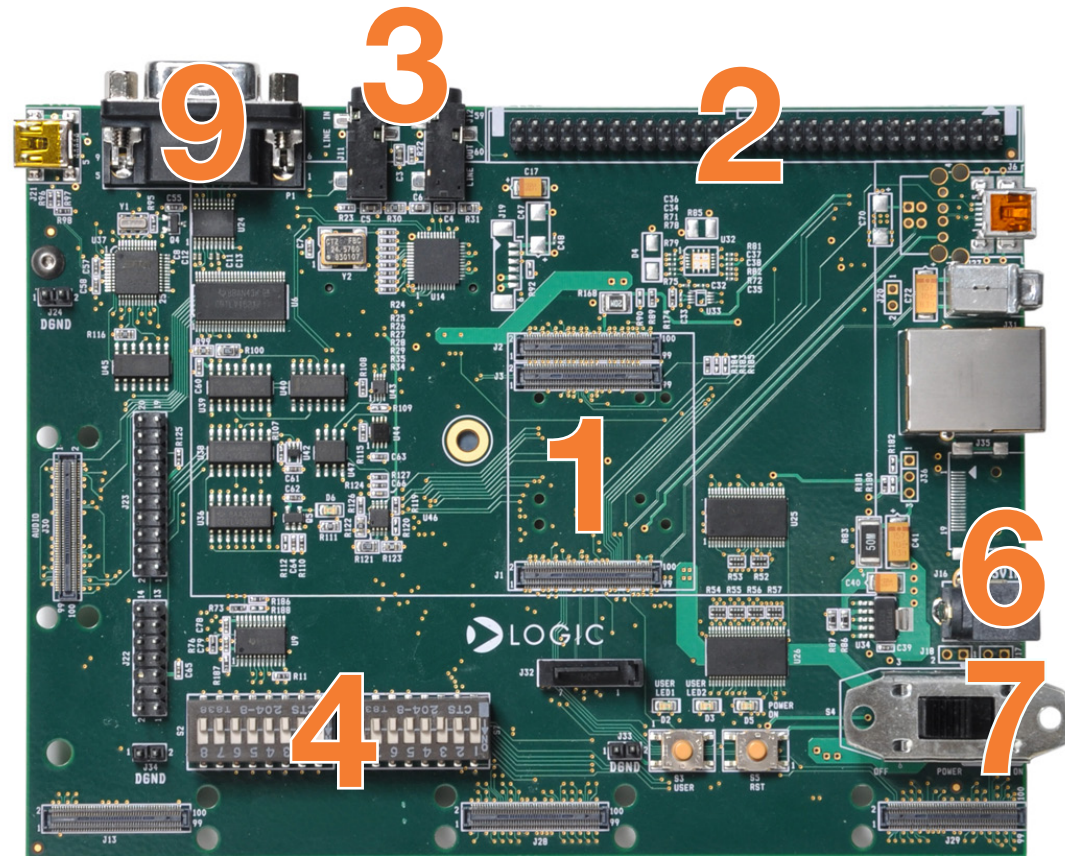


USB SD Card
Reader



Serial Cable

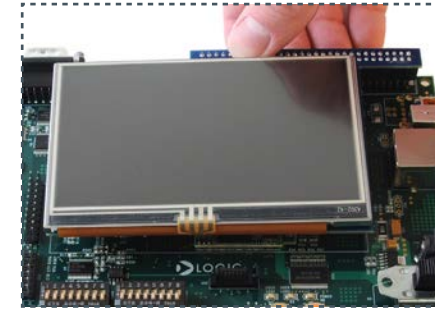
Important baseboard locations.
(Numbers correspond to steps on the right and back pages.)



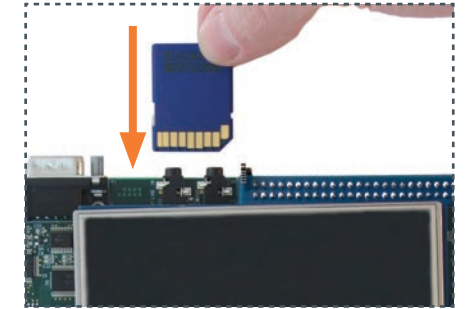
Demo setup.
(Setup development kit to sample OS demo.)



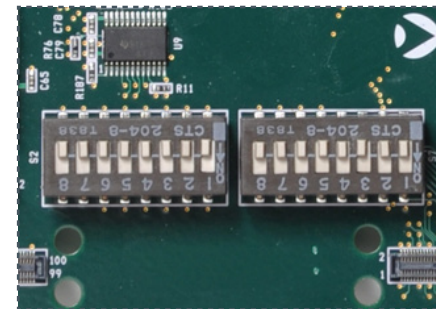
1 Connect OMAP-L138 SOM (use outline on baseboard for positioning), press straight down over connectors



2 Connect 4.3" LCD, remove protective plastic covering



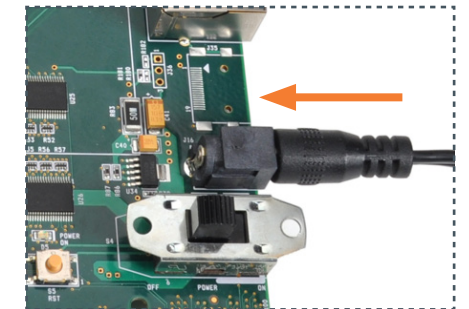
3 Insert Linux SD card (slot on bottom of baseboard)



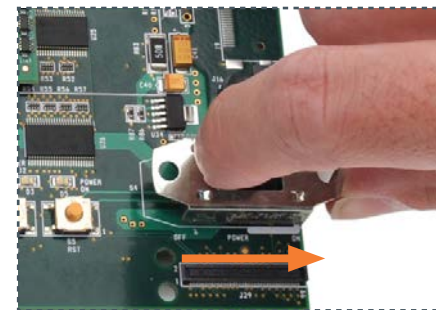
4 Verify all DIP switches are set to the OFF position



5 Connect power cord and supply



6 Connect power to baseboard and electric outlet



7 Switch power on



8 GUI will appear on LCD screen

Next steps



Next steps.

(Prepare your workstation for software development.)



9 Power off kit and connect serial cable to baseboard and host PC



10 Remove SD card and insert it into included USB SD card reader; connect USB SD card reader to host PC

Linux DVSDK

Locate the *START HERE* folder on the SD card and view *setup.htm*. Use the information in *setup.htm* to determine the next steps specific to your development environment.

Troubleshooting

If you are having trouble accessing the Linux OS demo on the included SD card, try the following:

- +Verify that the OMAP-L138 SOM is securely connected to the baseboard.
- +Verify that all DIP switches are set to the OFF position.
- +Verify that the correct SD card is inserted into the baseboard.

Register Your Kit

To gain access to kit and SOM documentation, register your kit on the Logic PD website at: support.logicpd.com/auth/register_product.php

For support questions, please contact:
support.logicpd.com/support/askaquestion.php

For community support, please visit:
www.ti.com/e2e

The TI Embedded Processors Wiki can be found at:
processors.wiki.ti.com

For more information on the TI OMAP-L138 processor or to download the latest TI software, visit:
www.ti.com/omap-l138-prprod1

 **LOGIC PD** 411 N. Washington Ave. Suite 400 Minneapolis, MN 55401
T : 612.672.9495 F : 612.672.9489 I : www.logicpd.com

©2012 Logic PD, Inc. All rights reserved. Zoom is a trademark of Logic PD, Inc. The Texas Instruments logo and name are registered trademarks of Texas Instruments Incorporated. Terms and product names in this document may be trademarks of others.

ZOOM™ OMAP-L138 eXperimenter Kit

For more information:
www.logicpd.com/omapl138exp

QuickStart Guide



Congratulations on your purchase of the Zoom OMAP-L138 eXperimenter Kit. This Zoom Development Kit provides a product-ready hardware and software platform for evaluating the functionality of the Texas Instruments (TI) OMAP-L138 processor and the Logic PD System on Module (SOM).