

LINCOLN

®

**NOW
AVAILABLE IN
12- & 24-VOLT
DC MODELS**

LINCOLN'S REEL-N-FLOW™ PUMP AND REEL KITS

***"We wanted
something rugged
and durable, and
Lincoln delivers it."***

Roger Ploof, President, S&R Corporation

- Provides quick, efficient machine lubrication
- Daily manual lubrication time is easily reduced by half—increasing productivity and profitability
- 12- and 24-volt DC electric operation means quick, hassle-free installation
- Kits include the proven Lincoln electric FlowMaster™ pump, heavy-duty hose reel, control valve and swivel

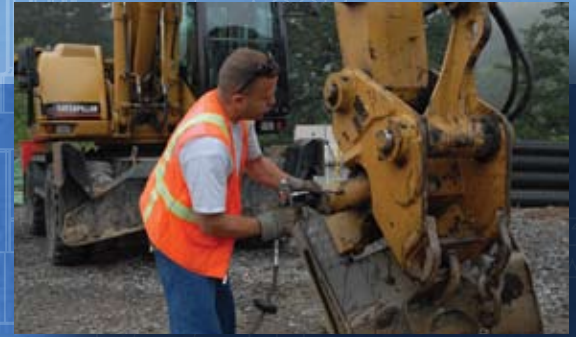


**For more details,
please contact your local
authorized Lincoln
construction distributor.**

"The electric system was, by far, much easier to install than the hydraulic system. It reduced installation time by at least 40 percent."

Mike Bennett - Milton CAT

- Designed specifically to meet the demands of on- and off-road equipment applications
- High pressure/high flow for fast application
 - 6,000 psi capability overcomes tight pins/bushings or blocked lube points
 - Delivers grease in extreme temperatures
 - High volume output allows for quick lubrication of daily lube points, and can also be used to effectively stretch excavator tracks
- Custom pump and follower design completely empties the bucket of grease with no waste
- Built-in pressure switch extends service life by allowing the pump to operate only when needed
- Unit can be easily mounted on a machine, pick-up or service truck for improved convenience



TOP VIEW OF REEL-N-FLOW INSTALLATION

Performance and Specifications

Operating Temp.	-20° to +140°F (-29° to +60°C)
Operating Voltage	24 VDC (18 min., 32 max.) 12 VDC (9 min., 12 max.)
Motor	24 VDC 1/3 HP (0.25 kw) 12 VDC 1/4 HP (0.14 kw)
Max. Current Draw	24 VDC 15 AMPS 12 VDC 20 AMPS
Max. Output	24 VDC 18.0 in ³ /min (295 cm ³ /min) 12 VDC 7.0 in ³ /min (115 cm ³ /min)
Max. Output Pressure	6,000 psi (413.8 bar)
Pump Weight	35 lbs. (15.9 kg)
Hose Reel Capacity	3/8" High Pressure Hose 50 ft. (15 m)

Accessories

10,000 psi Gauge	274872
35#/5-gal. Container Mount	274934

Pumps	Model	Description
24 VDC	274873	Bare, high-pressure pump
12 VDC	276041	
24 VDC	274874	Bare pump with integrated pressure switch and manifold
12 VDC	276360	

Model	Voltage	Description	Bare Pump	Lid	Follower	Reel	Connecting Hose	Control Valve & Swivel
274886	24 VDC	274874 with bucket	274874					
276358	12 VDC	276360 with bucket	276360					
274887	24 VDC	274866 with hose reel, 50' hose, control valve, swivel & 7' connecting hose	274874	274878	274888	94553H	276366	3050, 81729
276359	12 VDC	276358 with hose reel, 50' hose, control valve, swivel & 7' connecting hose	276360					



Lincoln Industrial Corp.
One Lincoln Way
St. Louis, MO 63120-1578

Phone 314.679.4200
Fax 314.679.4359
www.lincolnbuils.com

Form 444017 (12/08)
© Copyright 2008
Printed in U.S.A.