

250GAR/500GAR

Fast acting fuse — For protection of semiconductor devices

Features

- ◇ Center blade type
- ◇ High breaking capacity (Over 50kA)
- ◇ Large current ratings up to 800A



Specifications

<250GAR>

Rated voltage & breaking capacity: AC250V-50kA
 DC200V (L/R5ms) -50kA

Maximum arc voltage: 550V

<500GAR>

Rated voltage & breaking capacity: AC500V-50kA
 DC400V (L/R5ms) -50kA

Maximum arc voltage: 1150V

Type	Rated Amperage (A)	Fusing I ² t (A ² S) <i>Note 1</i>	Shutdown I ² t (A ² S) <i>Note 2</i>	Power Loss (W) <i>Note 3</i>	Dimensions (mm)							Weight (g)
					A	B	C	φE	W	T	φD <i>Note 3</i>	
250GAR50	50	150	1,100	4.0	80	59	38	32	22	4	10 (M8)	150
250GAR75	75	350	2,600	6.3								
250GAR100	100	620	4,600	8.5								
250GAR150	150	1,400	10,000	15.0								
250GAR200	200	2,400	17,000	21.0	80	59	38	36	26	5	10 (M8)	200
250GAR250	250	3,100	22,000	26.0								
250GAR300	300	5,600	42,000	28.0								
250GAR400	400	8,600	65,000	40.0								
250GAR500	500	13,000	97,000	46.0	98	71	38	45	32	8	11 (M10)	370
250GAR600	600	22,000	160,000	49.0								
250GAR800	800	63,000	460,000	53.0								
500GAR30	30	90	700	4.2								
500GAR50	50	240	1,800	8.0								
500GAR75	75	540	4,200	12.0								
500GAR100	100	960	7,000	16.0								
500GAR150	150	2,100	18,000	22.0	120	93	60	45	32	8	11 (M10)	440
500GAR200	200	3,900	35,000	28.0								
500GAR250	250	7,000	50,000	40.0								
500GAR300	300	8,600	70,000	47.0								
500GAR400	400	17,000	150,000	47.0	120	93	60	50	35	8	11 (M10)	530
500GAR500	500	22,000	190,000	60.0								
500GAR600	600	41,000	370,000	64.0								
500GAR800	800	93,000	850,000	85.0								

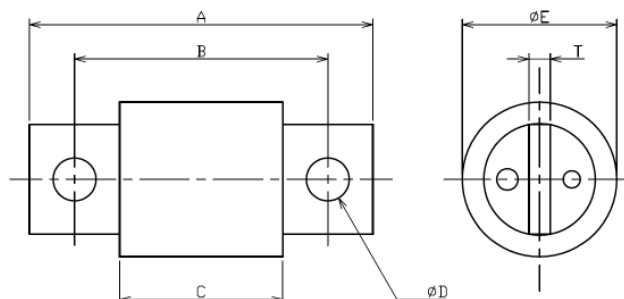
Note 1: Fusing I²t are calculated values.

Note 2: Shutdown I²t of 250GAR:250V and 500GAR:500V are the values at the rated voltage.

Note 3: (M**) Recommended installation screw

Please consult us for RoHS compliancy.

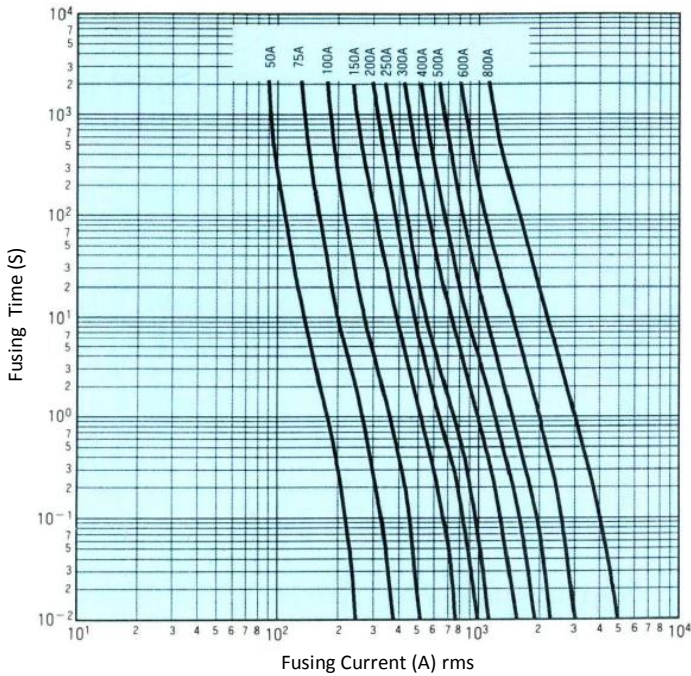
Dimensions (mm)



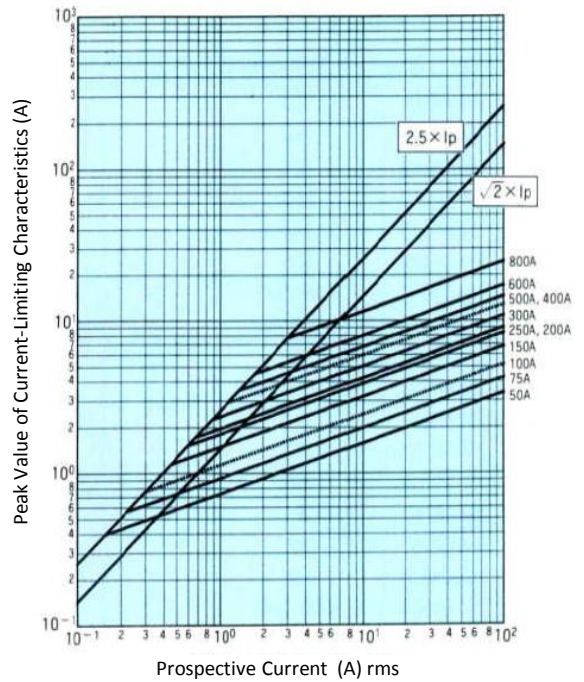
250GAR/500GAR

Fast acting fuse — For protection of semiconductor devices

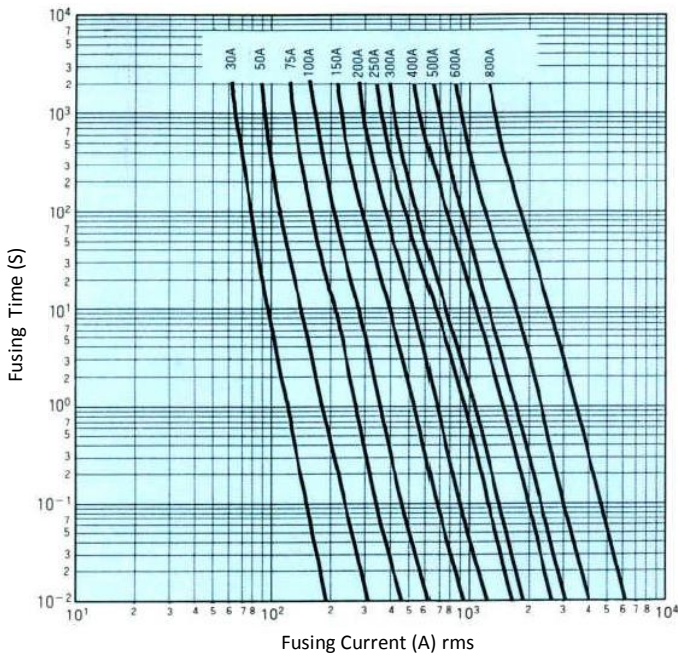
250GAR Fusing Characteristics



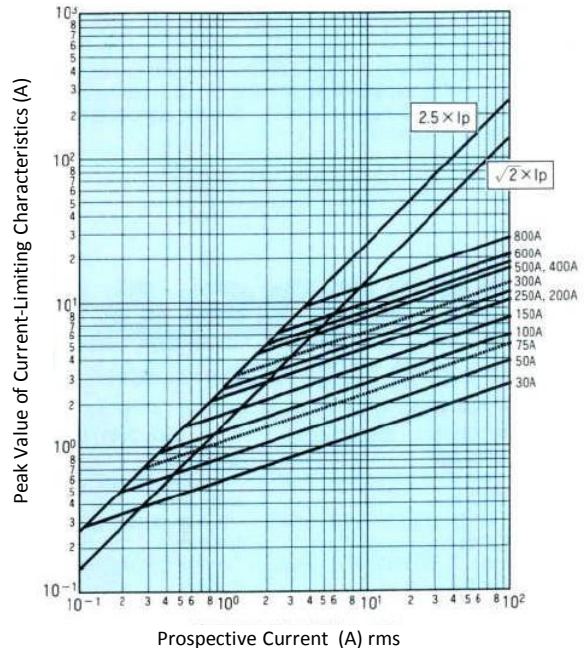
Current-Limiting Characteristics



500GAR Fusing Characteristics



Current-Limiting Characteristics



For inquiries, please contact our sales department at;
Tel: 03-3860-8661 Fax: 03-3860-8660 E-mail: uketsuke@hinodedenki.co.jp

All specified data in this leaflet is based on the information at the time of publication, and the products and/or specifications may be subject to change without notice.

We recommend that all our customers check the latest product information on our web site ([http:// www.hinodedenki.co.jp](http://www.hinodedenki.co.jp)) as well as contacting us before placing orders.