

**NEW!**

# HK1551

## Fuse Holder

### Features

#### 800V rated insulation voltage

The fuse holder is convenient for all manner of designs and installation. DIN rail or direct placement options available.

Fuse cover use allows for easy and safe placement of fuses. This helps to ensure effective placement.

(HK1551 is not UL recognized product.)



### Specifications

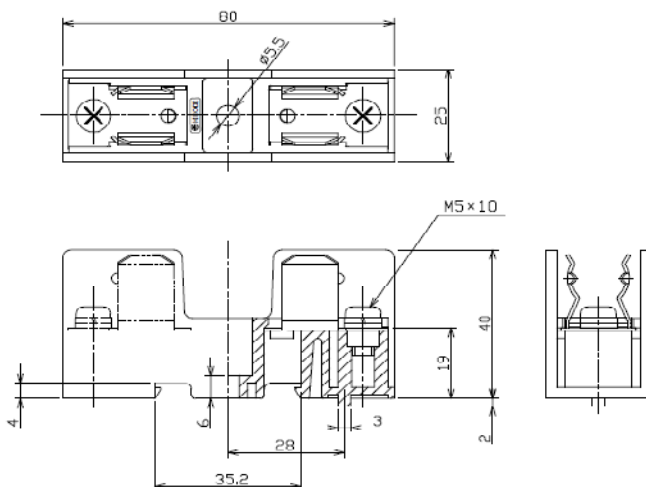
HK1551	
Rated insulation voltage	800V AC/DC
Current capacity	40A
Applicable fuses	$\varnothing 14.5 \times 51 \text{ mm}$ (JIS CF2 size fuses such as Hinode 700/800CF series, 60FA series, etc)
Applicable wires	14mm <sup>2</sup> MAX
Material (Body)	P.B.T (UL94V-0)
Material (Cover) *Option HC-15	Polycarbonate (UL94V-2) Clear
Material (Clip)	Phosphor bronze
Installation method	On DIN rail or direct placement
Installation dimensions	

### Applicable fuses

700CF/800CF series ( $\varnothing 14.5 \times 51 \text{ mm}$ )

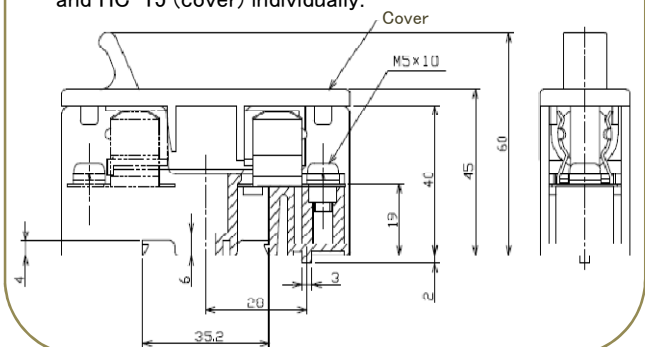
Type	Rated Voltage	Rated Current
800CF-5UL	AC700V/DC800V	5A
800CF-10UL		10A
800CF-15UL		15A
800CF-20UL		20A
800CF-25UL		25A
800CF-30UL	AC/DC700V	30A
700CF-35		35A
700CF-40		40A

### Dimensions (mm)



#### With holder cover (HC-15 / Optional)

※Holder cover is available separately.  
Please place orders for HK1551 (body) and HC-15 (cover) individually.



For inquiries, please contact our sales department at;  
Tel: 03-3860-8661 Fax: 03-3860-8660 E-mail: [uketsuke@hinodedenki.co.jp](mailto:uketsuke@hinodedenki.co.jp)

All specified data in this leaflet is based on available information at the time of publication, and the products and/or specifications may be subject to change without notice.

We recommend that all our customers check the latest product information on our web site ([http:// www.hinodedenki.co.jp](http://www.hinodedenki.co.jp)) as well as contacting us before placing orders.

Topics No T11-07