

T-60

1000V Fuse Holder



Features

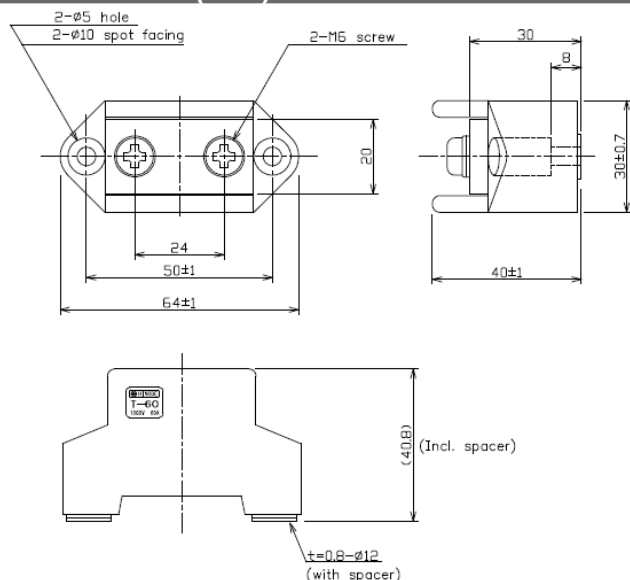
- Able to withstand use with fuses of up to 1000V (used in pairs)
- Separate type

Specifications

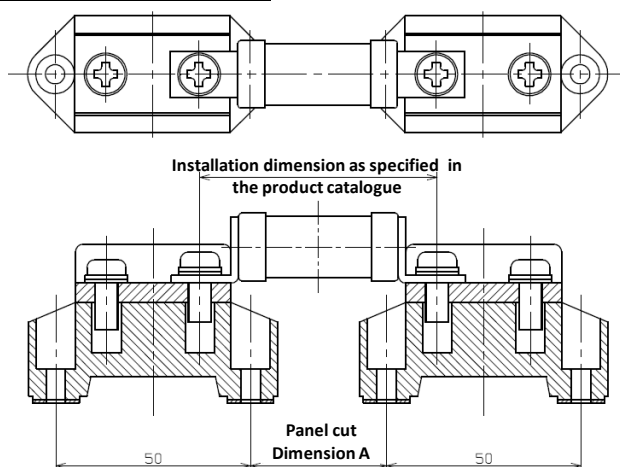
Catalogue number	T-60
Rated insulation voltage	1000V
Rated current	60A
Screw tightening torque	3.3~3.9 N·m
Withstand voltage	AC2500V, 50Hz, For 1minute
Ambient air temperature	-30°C~+90°C
Weight	125g
Material	Ceramic



Dimensions (mm)



Installation Dimensions



Applicable fuses

Type	Rated voltage	Rated current	Panel cut / Dimension A
250GH	250V	Up to 125A	25
250FH	250V	Up to 60A	26
25FH	250V	Up to 75A	26
25SHA	250V	Up to 150A	26
250GA	250V	Up to 150A	26
25LKA	250V	Up to 100A	28
350GH	350V	Up to 100A	25
50SHA	500V	Up to 80A	40
500GA	500V	Up to 80A	40
660GH	660V	Up to 100A	45
660GA	660V	Up to 75A	46
600FH	600V	Up to 55A	47
600FHM	600V	Up to 55A	46
60FH	600V	Up to 55A	46
66LKA	660V	Up to 100A	46
750GH	750V	Up to 100A	45
750FH	750V	Up to 55A	47
700FHS	700V	Up to 75A	46
70SHA	700V	Up to 75A	46
1000GH	1000V	Up to 80A	65
100SHA	1000V	Up to 50A	65

Note 1: When using the holders with a fuse that is a rated current of over 60A, please make sure that the steady current doesn't exceed 60A .

Note 2: Two holders need to be ordered for use in pairs . Please place an order of even-numbered quantity

For inquiries, please contact our sales department at;
Tel: 03-3860-8661 Fax: 03-3860-8660 E-mail: uketsuke@hinodedenki.co.jp

All specified data in this leaflet is based on available information at the time of publication, and the products and/or specifications may be subject to change without notice. We recommend that all our customers check the latest product information on our web site (<http://www.hinodedenki.co.jp>) as well as contacting us before placing orders.