



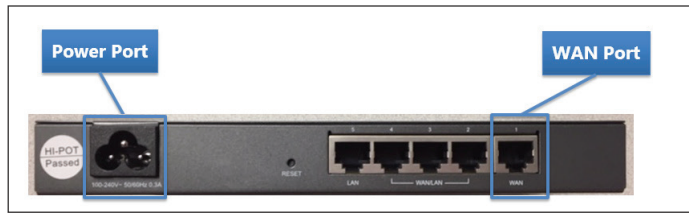
HARBORTOUCH®
A SHIFT4 COMPANY

ECHO™ POS INSTALLATION QUICK REFERENCE GUIDE

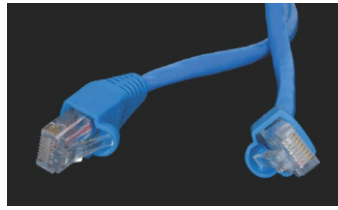
STEP ONE

Connect the Harbortouch router to a power outlet using the supplied power cable.
Then connect the Harbortouch router to your business's modem using an Ethernet cable.

IMPORTANT: Do not connect the Harbortouch router to an existing router. The Harbortouch router must be connected directly to the modem.



HARBORTOUCH ROUTER



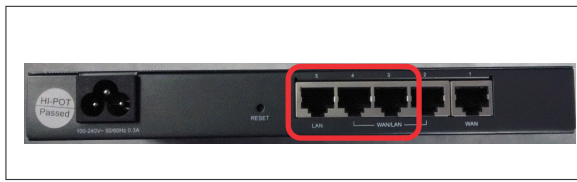
ETHERNET CABLE

STEP TWO

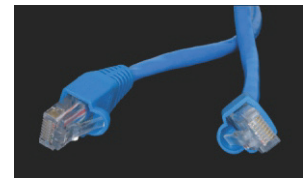
Connect the Echo station to the router using an Ethernet cable.



ECHO STATION ETHERNET PORT



HARBORTOUCH ROUTER



ETHERNET CABLE

STEP THREE

Connect the keyboard by plugging it into one of the USB ports on either the front or back of the Echo station.



USB PORTS ON FRONT OF ECHO STATION



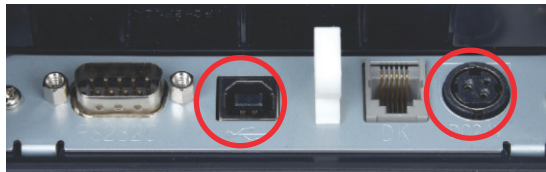
USB PORTS ON BACK OF ECHO STATION

STEP FOUR

Connect the receipt printer to the Echo station with the powered USB cable.



POWERED USB PORT ON BACK OF ECHO STATION



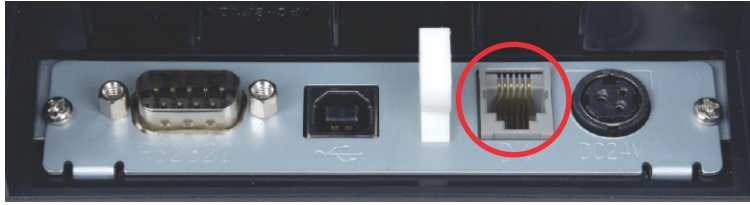
RECEIPT PRINTER PORTS



POWERED USB CABLE

STEP FIVE

If you are using a cash drawer, connect it to the RJ12 port on the back of the receipt printer.



RJ12 PORT ON BACK OF RECEIPT PRINTER



CASH DRAWER

STEP SIX

Connect the Echo station to a power outlet using the supplied power cable.
To power on the POS station, press the red power button located underneath the bottom right corner of the screen.
To power on the receipt printer, press the power button on the front of the printer.



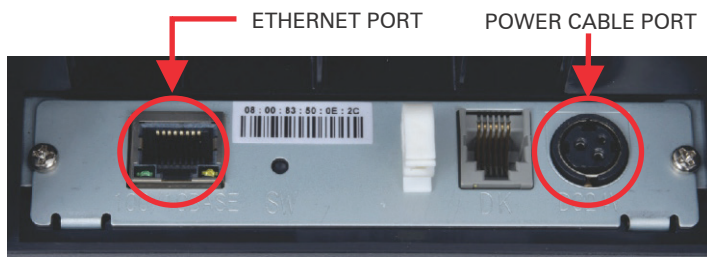
POWER CABLE PORT ON BACK OF ECHO STATION



POWER CABLE

STEP SEVEN

If you are using a remote printer, connect an Ethernet cable from the printer to the Harbortouch router.
Next, connect the power cable to the printer and then plug the other end into a power outlet.
Power on the remote printer using the power button on the front of the printer.



BACK OF REMOTE PRINTER



ETHERNET CABLE



POWER CABLE

REPLACING THERMAL PAPER ROLL



1. Place the thermal paper roll into the top of the receipt printer, feeding from underneath the roll.
2. Pull 2-3 inches of paper past the paper cutter and close the lid.
3. Press "Feed" to advance the paper.
4. Scratch the paper with your fingernail to ensure the printable side of the thermal paper is facing up. The printable side of the paper will darken when scratched by your fingernail.