

# Golden Arrow by FusionBeads.com



Approximate finished length: 21.5 inches

## **Beads and other products needed for one necklace:**

- 1 - Pewter Arrow Link by Nunn Design - 37mm - Antique Gold (BM5135)
- 1 - 20.5mm Antique Gold Plated Pewter Small Hammered Circle Stamping Pendant by Nunn Design (PE3554)
- 5 - 4mm Gold Plated Base Metal 20 Gauge Open Jump Rings (BM2748)
- 42 inches - 2mm Gold Plated Brass Flat Oval Link Cable Chain (CN3201)
- 1 - 12x7mm Gold Plated Base Metal Lobster Claw Clasp (BM3151)

## **Tools needed to complete the necklace:**

Chain nose pliers  
Wire cutters



## **Beading Techniques needed to complete the necklace:**

Opening and Closing a Jump Ring

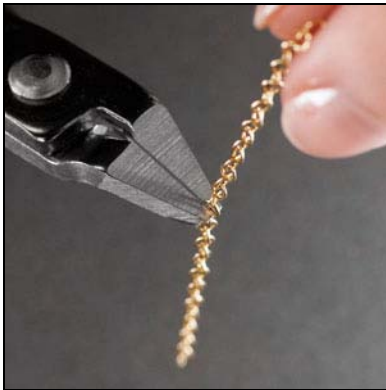
**Instructions to complete “Golden Arrow” necklace:**

**Step 1**

Using wire cutters, cut the chain into the following lengths:

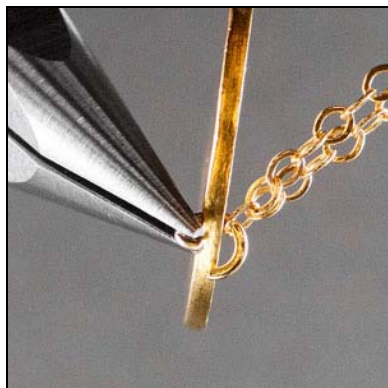
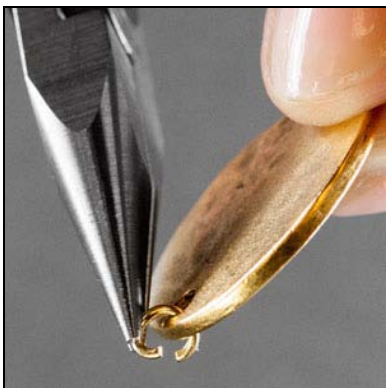
2 – 9” lengths

1 – 24” length



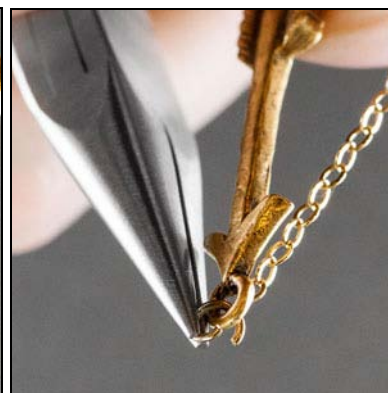
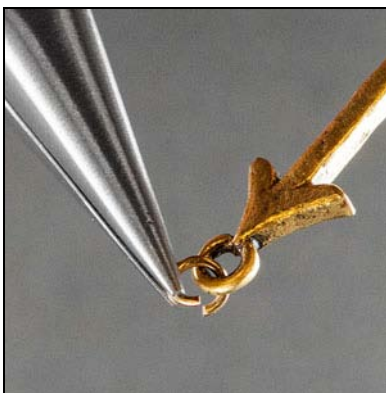
**Step 2**

Open one jump ring (see Opening and Closing a Jump Ring Technique). Fold the 24-inch length of chain to find the middle link, and use the jump ring to attach the stamping pendant to the link. Close the jump ring.



**Step 3**

Use one jump ring to attach one side of the arrow link to one end link of one 9-inch length of chain.



#### Step 4

Repeat Step 3 with the second side of the arrow link and the second 9-inch length of chain.



#### Step 5

Use one jump ring to connect the unattached end link of one 9-inch length of chain to one side of the 24-inch length of chain and the lobster claw clasp.



#### Step 6

Use one jump ring to connect the unattached end link of the second 9-inch length of chain to the second side of the 24-inch length of chain. This jump ring will catch the lobster claw clasp.



***For step-by-step photos and instructions on these and other techniques, visit [FusionBeads.com](http://FusionBeads.com) and select Beading Techniques from the top navigation bar. You'll find more Inspiration jewelry ideas at [FusionBeads.com](http://FusionBeads.com)!***