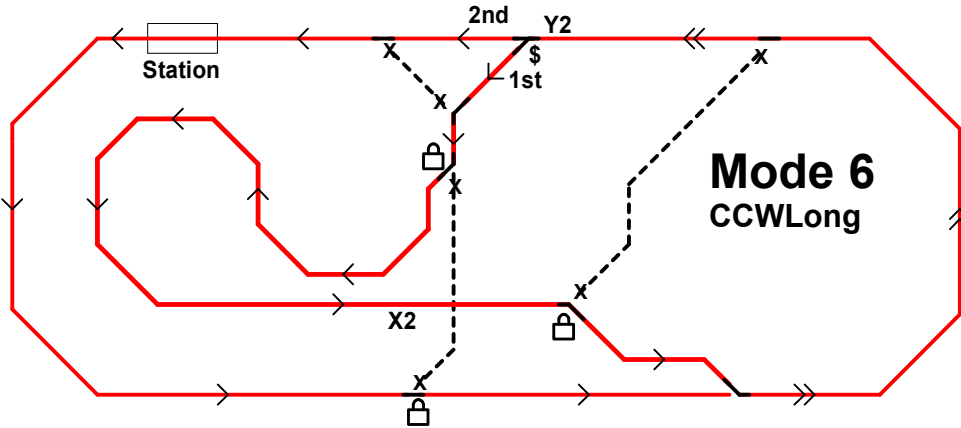


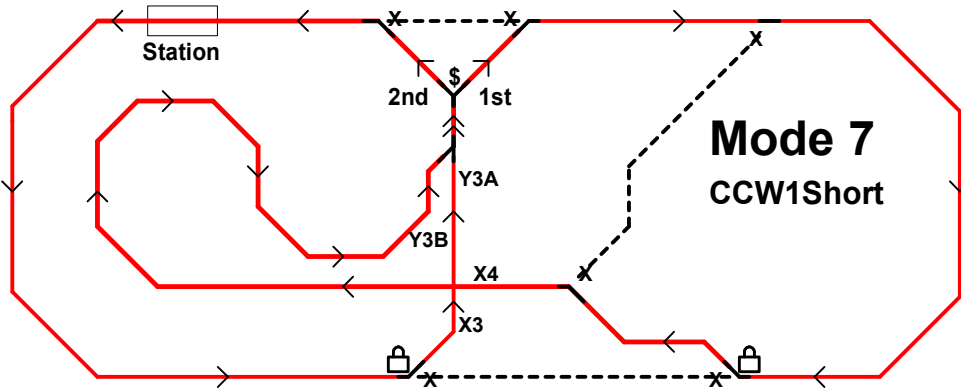
Mode 5
CCW Legacy

Instal Signals
Y2, Y3A, Y3B, X3, X4



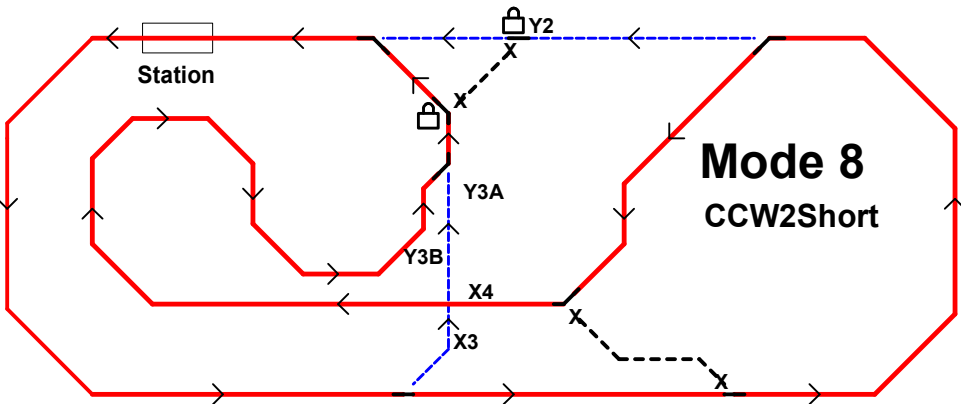
Mode 6
CCW Long

Instal Signals
Y2, X2



Mode 7
CCW 1 Short

Instal Signals
Y3A, Y3B, X3, X4



Mode 8
CCW 2 Short

Instal Signals
Y2, Y3A, Y3B, X3, X4

\$: Switch must be thrown by the engineer selecting route 1 first pass and route 2 second pass.

◇ = Permissible Route Travel Directions

≡ = Route section Travelled Twice

--- = Allowed Optional Route. Turnout must be restored to Mainline.

X---X = Closed Track, Do Not Enter

🔒 = Turnout locked in position, no Switch Stand.

Title CCW Modes 5- 8		
Author		
File nents\KLS\Signal Misc\Wiring\CCWroutes 5 8.dsn	Document	
Revision 1.0	Date	Sheets 1 of 1