

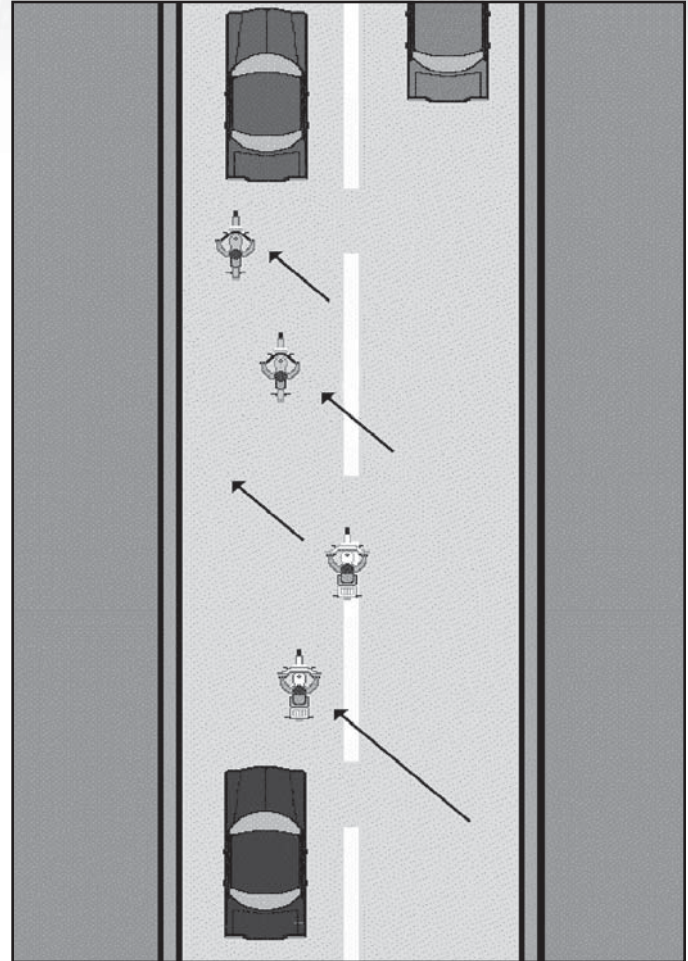
Changing Lanes or Passing on a 4-Lane Road

When your group wants to pass slower traffic or change lanes on a 4-lane road such as a freeway or interstate, ***the group may pass as a unit***. When it is safe and legal, the lead rider should signal the lane change when he/she has determined that the entire group can change lanes and pass as a unit. The other riders then follow this lead and signal one at a time to move into the next lane. Your lead rider should maintain a merging speed that will allow enough space for following riders to safely merge.

Since riding in a group doesn't change your right-of-way, be alert to the fact that ***cars entering or exiting the roadway may cut through your formation*** if your group is traveling in the far right lane. It may be better to move the group over one lane when everyone has safely entered the roadway.

In heavier traffic, resist the temptation to close up the formation too much. ***Maintain your space cushion***.

NOTE: Entering or exiting a 4-lane road such as a freeway or interstate always requires a single-file formation. This increases the space cushion and allows more reaction time. Change to staggered formation only after safely merging onto the roadway.



Passing on a 2-Lane Road

It is usually very difficult for a group to pass a slow-moving car.

If the lead rider decides to pass the car, each rider must decide on his/her own if it is safe to follow.

Pass as if you were riding alone.

IMPORTANT: After passing the vehicle, move on ahead to make room for all the bikes that will come behind you.

