



2019 LIGHTNING MASTERS WORLD CHAMPIONSHIP AND OPEN EUROPEAN CHAMPIONSHIP

June 8-12, 2019

International Lightning Class Association (ILCA), the Lightning Finland District, and Espoo Yacht Club (EPS), Espoo, supported by Tuusulanjärven Purjehtijat (TP), FINLAND

NOTICE OF RACE

The notation '[DP]' in a rule in the NoR means that the penalty for a breach of that rule may, at the discretion of the International Jury, be less than disqualification.

1. RULES

1.1 The regatta will be governed by the rules as defined in The Racing Rules of Sailing, the ILCA Constitution, By-Laws, Lightning Specifications and the Document Governing All Sanctioned Lightning Class Championships (hereafter referred to as Document Governing).

1.2 Except when RRS 88.2 applies, no national prescriptions will apply.

1.3 Appendix T applies.

1.4 UNDER RULE 87, CLASS RULES ARE CHANGED AS FOLLOWS:

1.4.1 VIII.3: Time limit shall be ninety (90) minutes. If no boat rounds the first mark within forty (40) minutes, the race shall be abandoned and, if possible, resailed.

1.5 If there is a conflict between languages, the text written in its original English Document will take precedence.

2. ADVERTISING

2.1 Advertising will be according to WS Regulation 20.4.1, restricted to aft 25% of hull only.

2.2 [DP] Boats may be required to display advertising chosen and supplied by the organizing authority. If this rule is broken, World Sailing Regulation 20.9.2 applies.

3. ELIGIBILITY AND ENTRY

3.1 The regatta is open to boats of the Lightning class. The skipper and crew shall be members of the ILCA and have World Sailing Eligibility.

3.2 The Masters Worlds Skipper must be at least 55 years of age as of 31 Dec 2019 and the total combined crew age must be at least 130 years as of 31 Dec 2019.

3.3 Skippers from outside Europe are allowed to compete in the European Championship.

3.4 Boats meeting criteria may simultaneously compete in both Masters' Worlds and European divisions.

Contact detail for the ILCA class office is as follows:

International Lightning Class Association (ILCA)

Laura Jeffers, Executive Secretary

1528 Big Bass Drive

Tarpon Springs, FL 34689 USA

Phone: (727) 942-7969 - Fax: (727) 942-0173

Skype: ilcaoffice - E-mail: office@lightningclass.org

3.5 On-line registration will be available at www.lightningclass.org. Completed registration must be returned with the entry fee no later than April 1, 2019.

3.6. Registration will close on May, 15, 2019.

3.7 All participants must be ILCA members and are required to check in at registration. All participants shall sign a disclaimer of liability of behalf of Espoo Yacht Club, the ILCA, the Lightning Finland District and the Finnish MNA, releasing them from the responsibility of deaths, damages to properties, personal injuries, caused before, during or after the event, understanding they participate under their own responsibility according to RRS Rule 4.

4. BOATS AND EQUIPMENT

4.1 Boats will not be provided by the organizing authority but may be available for private charter from local Fleet Members.

4.2 Damage or failures on chartered boats will not be grounds for redress. This changes rule RRS 60.1 (b).

5. FEES

5.1 Entry fee for the Masters Worlds and the European Championship is USD \$300 each if paid before April 16, 2019. After this date, a USD \$100 late fee will be added.

5.2 Entry fee for the World Championship is USD \$600 if paid before April 16, 2019. After this date, a USD \$100 late fee will be added.

5.3 Entry fee for participating in both the Masters Worlds and the European Championship is USD \$400 if paid before April 16, 2019. After this date, a USD \$100 late fee will be added.

5.4 Entry fee for the World Championship and the Masters Worlds or the European Championship is USD \$800 if paid before April 16, 2019. After this date, a USD \$100 late fee will be added. Entry fee includes opening ceremony soft drinks, closing ceremony dinner and drinks and other social events as planned.

5.5 Entry fee for the World Championship, the Masters Worlds and the European Championship is USD \$900 if paid before April 16, 2019. After this date, a USD \$100 late fee will be added.

5.3 Entry fee includes opening ceremony soft drinks and closing ceremony dinner and drinks.

5.4 Fees are not refundable.

6. SCHEDULE

Saturday June 8

09h00 – 18h00 Early registration and measurement for the Master Worlds and European Championship.

Sunday, June 9

09h00 – 18h00 Early registration and measurement for the Master Worlds and European Championship.

13h00 Skippers' meeting

15h00 Practice Race

19:00 Opening Ceremony, Masters and Europeans

Monday – June 10, 2019

11h00 Skippers meeting

13h00 Race 1 & 2

Tuesday – June 11, 2019

11h00 Skippers meeting

13h00 Race 3 & 4

Wednesday – June 12, 2019

11h00 Skippers meeting

13h00 Race 5 & 6

18h00 Prize Giving and Closing Ceremonies and Opening of the Worlds

No warning signals will be given on June 12, 2019 after 16h00.

If the regatta is behind schedule three (3) races may be sailed in a day.

7. MEASUREMENTS

7.1 All measurements will take place on the Club facilities.

7.2 Measurement will be made according to the Document Governing.

7.3 A maximum of one (1) main, two (2) jibs and two (2) spinnakers will be measured and approved for the Regatta. All sails shall have Official ILCA Royalty Labels. Mainsail and spinnaker numbers shall be the same. Mainsails are required to display the competitor's country designation in accordance with Lightning Plans and Specifications Section 75.

7.4. Required equipment must be available at measurement and during the entire championship.

7.5 In accordance with RRS 92 the Technical Committee may inspect and measure any boat at any time during the championship.

8. SAILING INSTRUCTIONS

8.1 The sailing instructions will be posted no later than June 1, 2019 on the regatta website www.lightningclass.org and will be available at the registration office.

9. VENUE

9.1 Espoon Pursiseura (Espoo Yacht Club), Nuottatie 19, 02230 Espoo, FINLAND
<http://www.espoonpursiseura.fi>

10. THE COURSES

10.1 The course to be sailed will be windward – leeward, with a maximum of six (6) legs. The Race Committee (RC) may use an alternative course.

10.2 The course area is marked K on the attachment 1 to this Notice of Race.

11. PENALTY SYSTEM

11.1 The decisions by the International Jury will be final.

11.2 The first two sentences of rule 44.1 are changed to: ‘A boat may take a One-Turn Penalty when she may have broken a rule of Part 2 or rule 31 while racing. However, when she may have broken a rule of Part 2 while in the zone around a mark other than a starting mark, her penalty shall be a Two-Turns Penalty.’

11.3 Insert a new sentence after the second sentence of RRS 44.1: “When an infringing yacht has its spinnaker drawing at the time of the infringement, drops it completely while taking her penalty, and resets it immediately and has it drawing after the penalty, the penalty is a One-Turn Penalty.” This changes rule 44.1.

12. SCORING

12.1 Three (3) races are required to be completed to constitute a regatta. Two races a day are scheduled, more may be sailed. Masters may sail fewer races than the Europeans.

12.2 (a) When five (5) or fewer races have been completed, a boat’s score will be the total of her race scores.

(b) When six (6) races or more have been completed, a boat’s series score will be the total of her race scores excluding her worst score.

13. SUPPORT BOATS

13.1 Team leaders, coaches, and other support personnel may go on the water aboard designated spectator boats strictly to observe the racing. The Organizing Authority intends to supply a limited number of spectator boats. Individual boats are allowed but must be registered with the OA and be required to assist in emergency situations. They shall stay outside the racing area (defined as 100 meters outside the lay lines of the course including the start area) from the start of the first race to the finish of the last race of the regatta. Competing boats may not receive support, be towed or be coached on the water at any time during the regatta unless such support is available to all boats and is authorized by the organizing authority.

The penalty for failure to comply with any of these requirements may be disqualification of all yachts associated with the infringing support personnel.

14. BERTHING

14.1 Boats shall be kept in their assigned places while they are in the boat park.

14.2 Boats may be hauled-out after each race day

15. RADIO COMMUNICATION

15.1 VHF radios are allowed for communications with the Race Committee (RC) per ILCA By-Laws, Article VIII, 5. b) 4) A. The RC intends to communicate with competitors using a VHF Channel to be announced later and will attempt to communicate OCS boats using the same VHF Channel. Competitors should bring their own VHS radio. Failure or delay in this procedure shall not be ground for redress. This changes rule 60.1 (b).

15.2 Official radio communication language is English.

15.3 European VHF Channels frequencies can only be used by RC

16. PRIZES

16.1 Prizes will be given as follows:

- Masters World Championship:
- Trophies will be awarded to the top five skippers and crews of the Masters World Championship
- European Championship
- Trophies will be awarded to the top five skippers and crews
- The Perpetual trophy COPA CITTA DI NAPOLI will be awarded to the European Winner of the 2019 European Championship and the DISTRICT OF FINLAND Perpetual Trophy to the Runner up

17. DISCLAIMER OF LIABILITY

17. Boats participate in the regatta entirely at their own risk. See Fundamental Rule 4, Decision to Race. The Organizing Authority (ILCA, Fleet 166 & EPS) will not accept any liability for material damage or personal injury or death sustained in conjunction with or prior to, during, or after the regatta.

18. INSURANCE

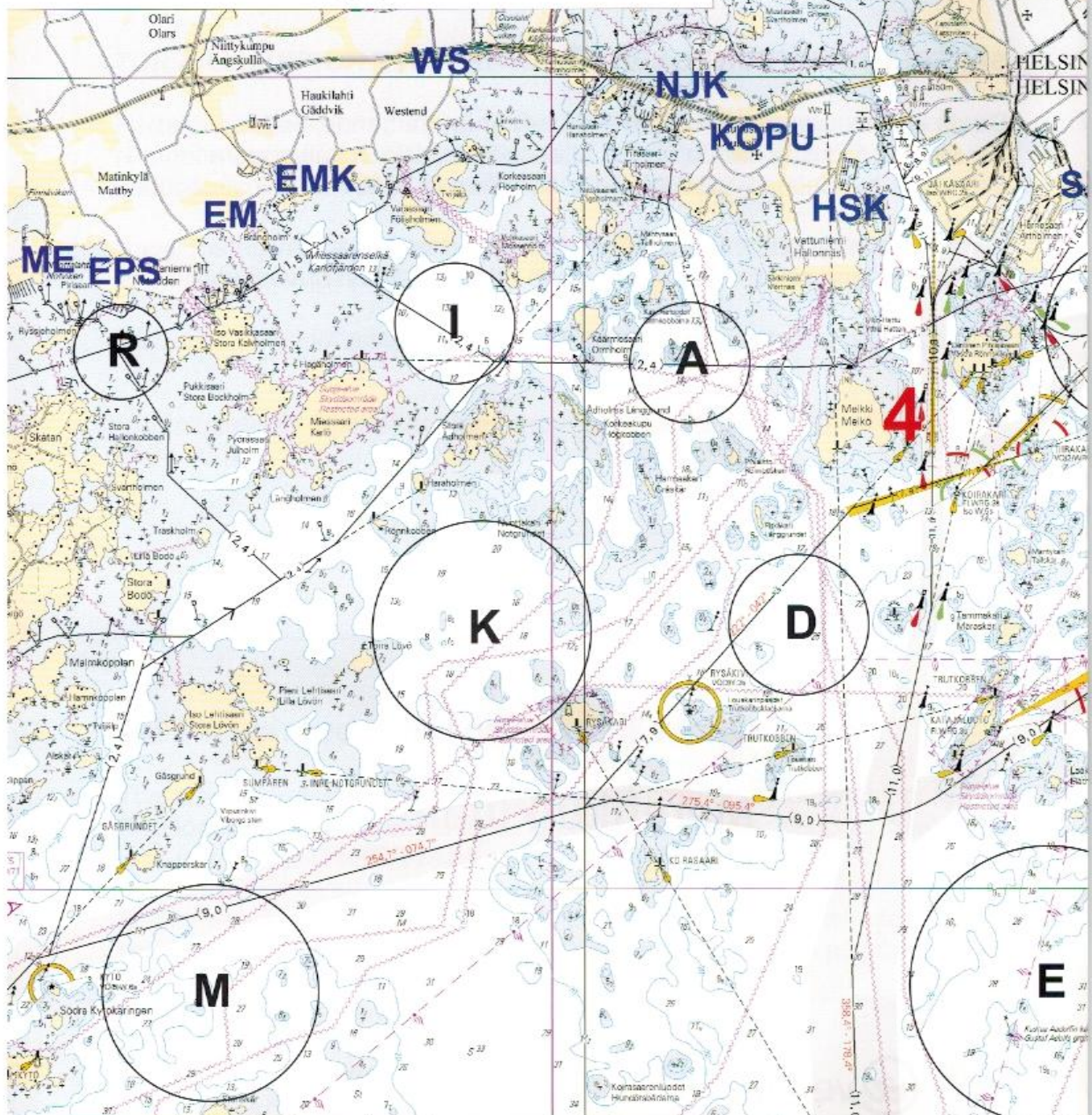
All entrants shall be covered by a minimum Third Party Liability indemnity of USD \$ 300 000 and declare that such cover will be maintained in full force throughout the event.

NOTICE OF RACE ENDS HERE

ADDITIONAL INFORMATION (Not Part of the NOR)

More information on travel, accommodation etc. on Lightningworlds2019.com, site to be updated regularly

HELSINGIN KILPAILURADAT HELSINGFORS KAPPSEGLINGSBANOR THE HELSINKI COURSES 2009



**VARO VILKASTA LAIVALIIKENNETTÄ
BEWARE OF THE DENSE VESSEL TRAFFIC
SE UPP FÖR DEN LIVLIGA FARTYGSTRAFIKEN**

- | | |
|------------|--------------------------------------------|
| 1. HARMAJA | 2. KUSTANMIEKKA |
| 3. SÄRKKÄ | 4. SYVÄVÄYLÄ
DEEP FAIRWAY
DJUPFARLED |

