



## **2019 ILCA WORLD CHAMPIONSHIP**

**June 12-17, 2019**

**International Lightning Class Association (ILCA), the Lightning Finland District, and  
Espoo Yacht Club (EPS), Espoo, FINLAND**

### **NOTICE OF RACE**

The notation '[DP]' in a rule in the NoR means that the penalty for a breach of that rule may, at the discretion of the International Jury, be less than disqualification.

#### **1. RULES**

1.1 The regatta will be governed by the rules as defined in The Racing Rules of Sailing, the ILCA Constitution, By-Laws, Lightning Specifications and the Document Governing All Sanctioned Lightning Class Championships (hereafter referred to as Document Governing).

1.2 Except when RRS 88.2 applies, no national prescriptions will apply.

1.3 Appendix T applies.

1.4 UNDER RULE 87, DOCUMENT GOVERNING RULES ARE CHANGED AS FOLLOWS:

1.4.1 VIII.3: Time limit shall be ninety (90) minutes. If no boat rounds the first mark within forty (40) minutes, the race shall be abandoned and, if possible, resailed.

1.5 If there is a conflict between languages, the text written in its original English Document will take precedence.

#### **2. ADVERTISING**

2.1 Advertising will be according to WS Regulation 20.4.1, restricted to aft 25% of hull only.

2.2 [DP] Boats may be required to display advertising chosen and supplied by the organizing authority. If this rule is broken, World Sailing Regulation 20.9.2 applies.

#### **3. ELIGIBILITY AND ENTRY**

3.1 The regatta is open to boats of the Lightning class. Every nation with organized Lightning activity (at least one Active Lightning Fleet) is entitled to two entries. The host nation is entitled to two additional entries. The defending and past World Champions, current World Youth Champion, International Champion at the time entries are due, ILCA World's VP, and ILCA President have a reserved slot. Additionally, ILCA reserves 3 slots to be filled by its Executive Committee.

3.2 Each Lightning National Class Association or National Authority shall inform the ILCA class office no later than January 1, 2019 of the number of boats it intends to enter.

3.3 If a Lightning National Class Association or National Authority cannot fill its quota, those available slots will be reallocated to interested countries by January, 15, 2019.

3.4 Each Lightning National Class Association or National Authority shall inform the ILCA class office no later than February, 15, 2019 of the competitors that will represent their country.

Contact detail for the ILCA class office is as follows:

International Lightning Class Association (ILCA)

Laura Jeffers, Executive Secretary

1528 Big Bass Drive

Tarpon Springs, FL 34689

Phone: (727) 942-7969 - Fax: (727) 942-0173

Skype: ilcaoffice - E-mail: office@lightningclass.org

3.5 On-line registration will be available at [www.lightningclass.org](http://www.lightningclass.org). Completed registration must be returned with the entry fee no later than April 1, 2019.

3.6. Registration will close on May, 15, 2019. If boats are not registered by April 1, 2019 they will forfeit their right to participate in the regatta and their slot will be made available to other countries/competitors.

3.7 The Skipper and Crew shall be members of ILCA and have World Sailing Eligibility. They are required to check in at registration. All participants shall sign a disclaimer of liability of behalf of Espoo Yacht Club, the ILCA, Lightning Finland District and the Finnish MNA, releasing them from the responsibility of deaths, damages to properties, personal injuries, caused before, during or after the event, understanding they participate under their own responsibility according to RRS Rule 4.

#### **4. BOATS AND EQUIPMENT**

4.1 Boats will not be provided by the organizing authority but may be available for private charter from local Fleet Members.

4.2 Damage or failures on chartered boats will not be grounds for redress. This changes rule RRS 60.1 (b).

#### **5. FEES**

5.1 Entry fee for the Masters World Championship and European Championship is USD \$300 each if paid before April 16, 2019. After this date, a USD \$100 late fee will be added.

5.2 Entry fee for the World Championship is USD \$600 if paid before April 1st, 2019. After this date, a USD \$100 late fee will be added.

5.3 Entry fee for participating in both the Masters World Championship and the European Championship is USD \$400 if paid before April 16, 2019. After this date, a USD \$100 late fee will be added.

5.4 Entry fee for the World Championship and the Masters World Championship or the European Championship is USD \$800 if paid before April 16, 2019. After this date, a USD \$100 late fee will be added.

5.5 Entry fee for the World Championship, the Masters World Championship and the European Championship is USD \$900 if paid before April 16, 2019. After this date, a USD \$100 late fee will be added.

5.3 Entry fee includes opening ceremony soft drinks, closing ceremony dinner and drinks and other social events as planned.

5.4 Fees are not refundable.

## **6. SCHEDULE**

### ***Wednesday – June 12, 2019***

10h00 – 17h00 Registration and measurement for the World Championship

18h00 Opening of the World Championship

### ***Thursday – June 13, 2019***

10h00 – 18h00 Registration and measurement for the World Championship

14h00 Skippers meeting

16h00 Practice Race

### ***Friday – June 14, 2019***

11h00 Skippers meeting

13h00 World Championship Race 1 & 2

### ***Saturday – June 15, 2019***

11h00 Skippers meeting

13h00 Race 3 & 4

### ***Sunday – June 16***

11h00 Skippers meeting

13h00 Race 5 & 6

### ***Monday – June 17***

09h00 Skippers meeting

11h00 Race 7 & 8

18h00 Prize Giving and Closing Ceremonies

No warning signals will be given on June 17, 2019 after 15h00.

If the regatta is behind schedule three (3) races may be sailed in a day.

## **7. MEASUREMENTS**

7.1 All measurements will take place on the Club facilities.

7.2 Measurement will be made according to the Document Governing.

7.3 A maximum of one (1) main, two (2) jibs and two (2) spinnakers will be measured and approved for the Regatta. All sails shall have Official ILCA Royalty Labels. Mainsail and spinnaker numbers shall be the same. Mainsails are required to display the competitor's country designation in accordance with Lightning Plans and Specifications Section 75.

7.4. Required equipment must be available at measurement and during the entire championship.

7.5 In accordance with RRS 92 the Technical Committee may inspect and measure any boat at any time during the championship.

## **8. SAILING INSTRUCTIONS**

8.1 The sailing instructions will be posted no later than June 1, 2019 on the regatta website <http://www.lightningclass.org/> and will be available at the registration office.

## **9. VENUE**

9.1 Espoon Pursiseura (Espoo Yacht Club), Nuottatie 19, 02230 Espoo, FINLAND

<http://www.espoonpursiseura.fi>

## **10. THE COURSES**

10.1 The course to be sailed will be windward – leeward, with a maximum of six (06) legs. The Race Committee (RC) may use an alternative course.

10.2 The course area is marked K on the Appendix 1 to this Notice of Race.

## **11. PENALTY SYSTEM**

11.1 The decisions by the International Jury will be final.

11.2 The first two sentences of rule 44.1 are changed to: “A boat may take a One-Turn Penalty when she may have broken a rule of Part 2 or rule 31 while racing. However, when she may have broken a rule of Part 2 while in the zone around a mark other than a starting mark, her penalty shall be a Two-Turns Penalty.”

11.3 Insert a new sentence after the second sentence of RRS 44.1: “When an infringing yacht has its spinnaker drawing at the time of the infringement, drops it completely while taking her penalty, and resets it immediately and has it drawing after the penalty, the penalty is a One-Turn Penalty.” This changes rule 44.1.

## **12. SCORING**

12.1 Three (03) races are required to be completed to constitute a regatta.

12.2 (a) When five (5) or fewer races have been completed, a boat’s score will be the total of her race scores.

(b) When six (6) races or more have been completed, a boat’s series score will be the total of her race scores excluding her worst score.

## **13. SUPPORT BOATS**

13.1 Team leaders, coaches, and other support personnel may go on the water aboard designated spectator boats strictly to observe the racing. The Organizing Authority intends to supply a limited number of spectator boats. Individual boats are allowed but must be registered with the OA and be required to assist in emergency situations. They shall stay outside the racing area (defined as 100 meters outside the lay lines of the course including the start area) from the start of the first race to the finish of the last race of

the regatta. Competing boats may not receive support, be towed or be coached on the water at any time during the regatta unless such support is available to all boats and is authorized by the organizing authority. The penalty for failure to comply with any of these requirements may be disqualification of all yachts associated with the infringing support personnel.

#### **14. BERTHING**

14.1 Boats shall be kept in their assigned places while they are in the boat park.

14.2 Boats may be hauled-out after each race day

#### **15. RADIO COMMUNICATION**

15.1 VHF radios are allowed for communications with the Race Committee (RC) per ILCA By-Laws, Article VIII, 5. b) 4) A. The RC intends to communicate with competitors using a VHF Channel to be announced later and will attempt to communicate OCS boats using the same VHF Channel. Competitors should bring their own VHS radio. Failure or delay in this procedure shall not be ground for redress. This changes rule 60.1(b).

15.2 Official radio communication language is English.

#### **16. PRIZES**

16.1 Prizes will be given as follows:

- Perpetual trophy for the ILCA World Champion
- Audrey Matteson Trophy to the highest placing Woman
- Smither Trophy to the highest placing first time skipper in the World Championship
- Youth Award to the youngest competitor
- Trophies for places 1 - 10
- Flags to winners of each race

#### **17. DISCLAIMER OF LIABILITY**

Boats participate in the regatta entirely at their own risk. See Fundamental Rule 4, Decision to Race. The Organizing Authority (ILCA, Fleet 166 & EPS) will not accept any liability for material damage or personal injury or death sustained in conjunction with or prior to, during, or after the regatta.

#### **18. INSURANCE**

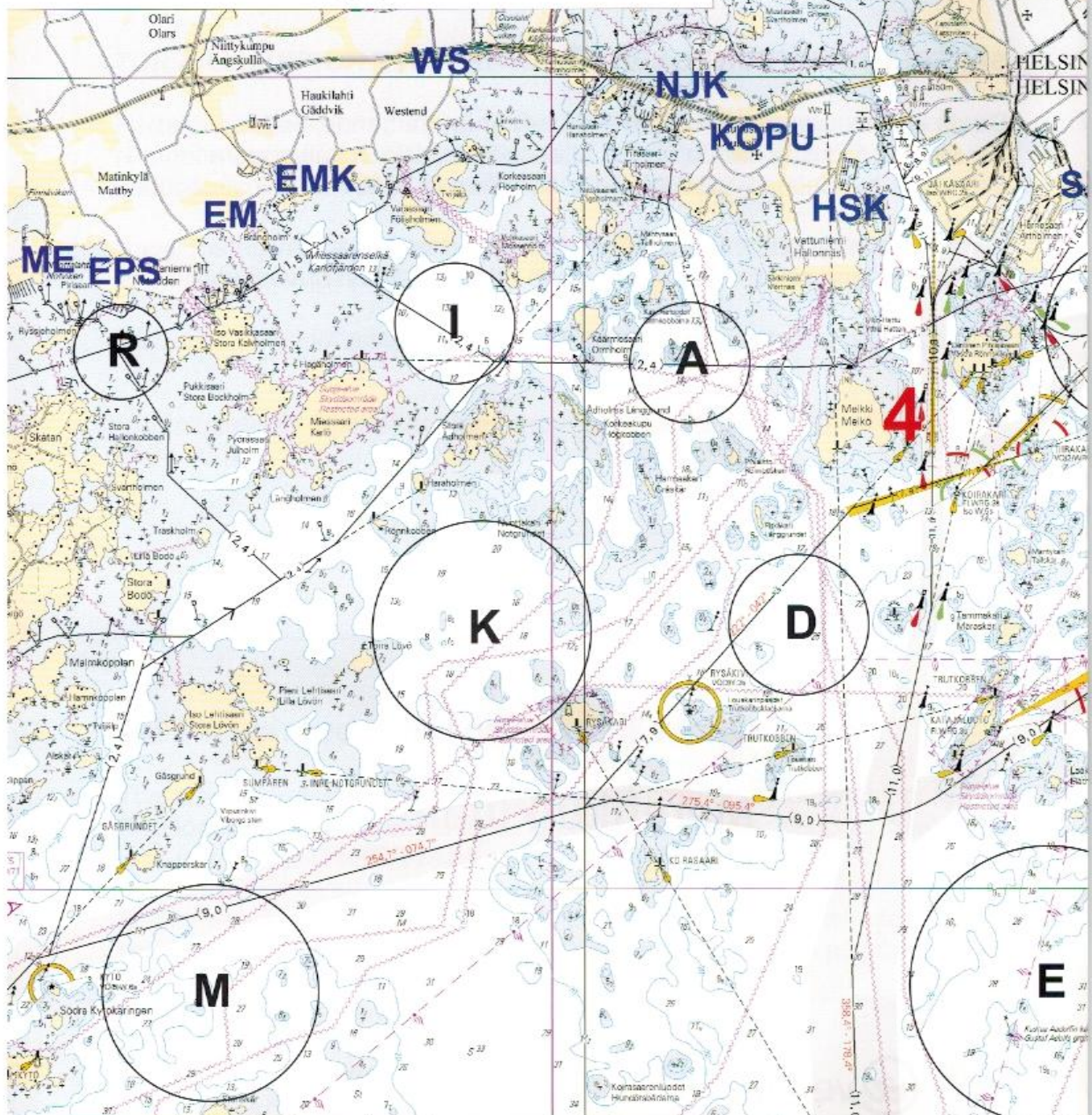
All entrants shall be covered by a minimum Third Party Liability indemnity of USD \$ 300 000 and declare that such cover will be maintained in full force throughout the event.

## **NOTICE OF RACE ENDS HERE**

#### **ADDITIONAL INFORMATION (Not Part of the NOR)**

More information on travel, accommodation etc. on [Lightningworlds2019.com](http://Lightningworlds2019.com), site to be updated regularly

# HELSINGIN KILPAILURADAT HELSINGFORS KAPPSEGLINGSBANOR THE HELSINKI COURSES 2009



**VARO VILKASTA LAIVALIIKENNETTÄ  
BEWARE OF THE DENSE VESSEL TRAFFIC  
SE UPP FÖR DEN LIVLIGA FARTYGSTRAFIKEN**

- |                   |   |
|-------------------|---|
| <b>1. HARMAJA</b> | <b>2. KUSTANMIEKKA</b>                              |
| <b>3. SÄRKKÄ</b>  | <b>4. SYVÄVÄYLÄ<br/>DEEP FAIRWAY<br/>DJUPFARLED</b> |

