

Protect our waters: **REPORT ILLICIT DISCHARGES!!**

Storm drains and arroyos are for transporting rainwater runoff. Keeping our stormwater channels clean helps keep our waters clean. Dumping any pollutants into storm drains or arroyos is an illicit discharge, is illegal, and is a violation of the Clean Water Act. Report illicit discharges or illicit connections by one of the methods listed at the bottom of this poster.

WHAT IS AN ILLICIT DISCHARGE?

- Sewage, pollutants, or hazardous materials introduced into the public stormwater system

Examples of public stormwater systems are curb inlets, catch basins, median drop inlets, roadside ditches, or arroyos. Stormwater systems flow untreated to natural water bodies and can directly affect water quality. Storm drains are there to collect stormwater runoff only!

WHAT ARE EXAMPLES OF AN ILLICIT DISCHARGE?

- pet waste (even when left on the ground during your walk)
- changing oil or antifreeze over or near a storm structure
- washing paint or construction waste down the storm drain
- yard waste
- leaking trash dumpsters
- failing septic systems

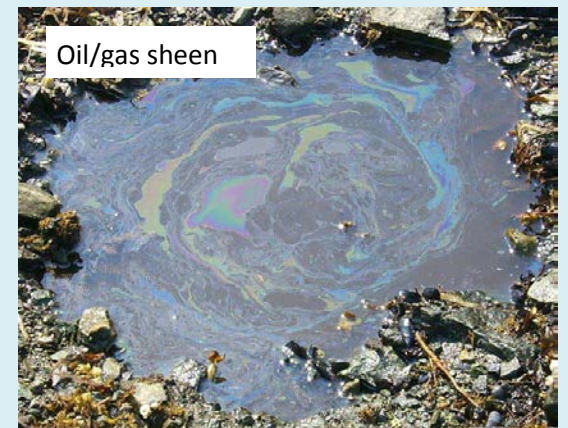


Photo courtesy NCTCOG

WHAT ARE SIGNS OF AN ILLICIT DISCHARGE?

- staining, residues,
- oily substances
- odors
- dry weather flows (no rain in previous 72 hours)
- cloudy waters
- suds



Photo courtesy NCTCOG

Oil or gas is recognized as sheen on the water. Natural sheens may be differentiated from an oil/gas sheen by swirling the sheen around in the water. If it re-attaches to itself, the sheen is oil/gas. Natural sheens will remain separated.

WHAT IS NOT AN ILLICIT DISCHARGE? Allowable discharges include:

- firefighting activities
- water line or hydrant flush water
- lawn water
- air conditioning condensate
- street/sidewalk wash water without detergents
- dust control water
- individual residential car washing
- irrigation water from agricultural sources



Photo courtesy NCTCOG

Natural sheens may appear as discrete blocks with sharp edges, and when broken up will remain separated, while oil/gas sheens will re-attach themselves and appear smoother.



Photo courtesy NCTCOG

HOW DO I REPORT AN ILLICIT DISCHARGE OR SPILL?

To report an illicit discharge, illicit connection, roadside trash along the Interstate or a state road send an email to nmdot.idde@state.nm.us, or call 505-827-5330.

To report a spill call NM Environment Dept. at 505-827-9329.