

CVL Membership Committee Position

Position Title: Member of the Membership Committee

Location: CVL Offices and Virtual

Reports to: Chair of Membership Committee

Purpose: The Membership Committee will act as the voice of the members by ensuring member satisfaction and wellbeing. A member of this committee will help grow and manage membership, conceive potential member services, establish policies, organize activities and gather feedback.

Key Responsibilities and Opportunities:

- Recognize member needs and potential services to satisfy needs.
- Recommend long-term core services to the Service Committee.
- Plan and implement activities, including social, health and wellness, education, cultural and safety.
- Conduct background checks.
- Achieve balanced and unbiased member diversity.
- Gather member feedback and gauge effectiveness of services and activities.

Qualifications: Strong interpersonal skills, available by phone and internet, and a desire to improve the lives of everyone by building a community of members who want to age safely in their homes and remain engaged with their neighbors and community.

Time Commitment: Flexible, depending on level of availability.

Benefits:

- Work to improve the lives of others in your community.
- Opportunity to share your skills.
- Be involved at the forefront of a grassroots movement.
- Be a part of the program that brings the community together around aging.
- Expand your personal network.

Contact for more information:

AmeriCorps VISTA Program Coordinator

Phone: 785-505-0187 or 785-505-0188

Email: info@communityvillagelawrence.org

Current Committee Members:

Chair: Ellen Paulsen

Brenda Nunez

Mary Baxter

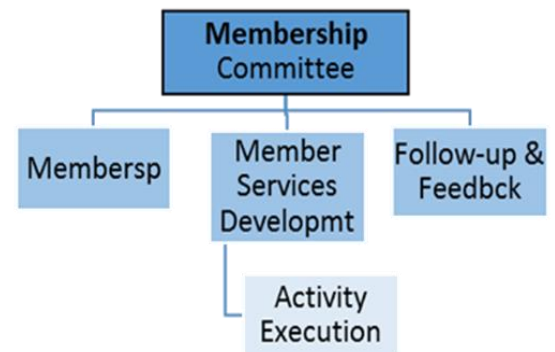
Judy Bellome

Tamara Cash

Gini Shoulberg

Annabelle Hiegel

Mary "Dee" Payne



To learn more about the mission of Community Village Lawrence, please visit:
www.CommunityVillageLawrence.org or www.facebook.com/CommunityVillageLawrence