

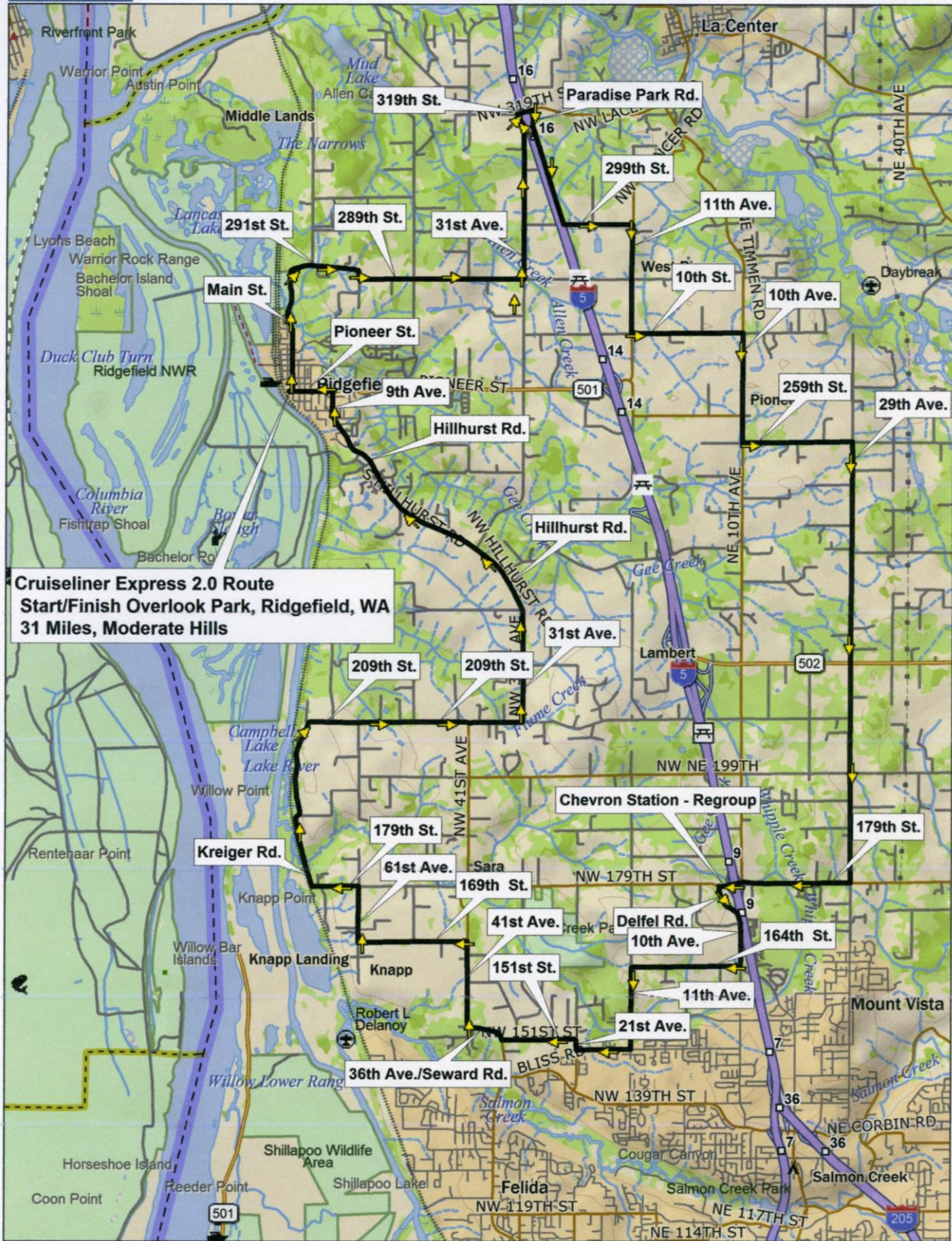
# Vancouver Bicycle Club

## Cruiseline Express 2.0 - 31 miles, moderate hills

	CUM DIST	START – Overlook Park, Corner of Pioneer and Main St., Ridgefield, WA	NEXT TURN
---	-----	Start Left from Pioneer, exiting from Park	0.08
L	0.0	Main St.	1.19
BR	1.1	291st St./61st St.	0.71
L	1.9	289th St.	1.49
L	3.3	31st Ave.	1.51
R	4.9	319th St.	0.15
R	5.0	Paradise Park Rd./299th St.	1.74
R	6.7	11th Ave./65th Ave.	1.00
L	7.7	10th St.	1.00
R	8.7	10th Ave.	1.00
L	9.7	259th St.	1.00
R	10.7	29th Ave.	4.00
R	14.7	179th St.	1.00
---	15.7	Regroup at Chevron Station	-----
R/L	15.7	Exit right on 179th St. then immediate left onto Delfel	0.25
BC	16.0	10th Ave.	0.51
R	16.5	164th St.	1.00
L	17.5	11th Ave.	0.75
R	18.2	149th St.	0.50
R	18.7	21st Ave.	0.10
L	18.8	151st St.	0.68
R	19.5	36th Ave./Seward Rd.	1.13
R	20.7	41st Ave.	0.77
L	21.4	169th St.	1.00
R	22.4	61st Ave.	0.51
L	22.9	179th St./Krieger Rd.	1.97
R	24.9	209th St.	1.95
L	26.9	31st Ave./Hillhurst Rd./9th Ave.	3.79
L	30.6	Pioneer	0.38
X	30.9	Cross Main St.	0.01
R	31.0	Overlook Park - <i>Finish</i>	-----

*Route by Donna Richardson (AKA DJ2); Cue sheet by KB*

Conventions: L = left turn; R = right turn; BL = bear left; BR = bear right; BC = becomes;  
X = cross; C = continue ; Street A/Road 1 means Street A becomes Road 1



**Cruiseline Express 2.0 Route**  
**Start/Finish Overlook Park, Ridgefield, WA**  
**31 Miles, Moderate Hills**

Data use subject to license.

© DeLorme. Topo North America™ 10.

www.delorme.com

