



HHSA West River Race

Date	Saturday, August 24, 2019																									
Eligibility	<p>All members of HHSA, PCRC, and SMSA are invited to participate. There is no fee for entry. Starts will be given for the following classes depending on entries:</p> <p>Spin A (valid PHRF Rating less than 100)</p> <p>Spin B (valid PHRF Rating greater than 100)</p> <p>Non-Spin Racing (boats with an upwind Sail Area-to-Displacement ratio equal to or greater than 18.0)</p> <p>Non-Spin Cruising (boats with an upwind Sail Area-to-Displacement ratio less than 18.0)</p>																									
Approx. Times	<p>The table shows the approximate times for the race.</p> <table border="1"> <thead> <tr> <th><i>Signal</i></th> <th><i>Spinnaker A</i></th> <th><i>Spinnaker B</i></th> <th><i>Non-Spin Racing</i></th> <th><i>Non-Spin Cruising</i></th> </tr> </thead> <tbody> <tr> <td>Warning</td> <td>1055</td> <td>1100</td> <td>1105</td> <td>1110</td> </tr> <tr> <td>Preparatory</td> <td>1056</td> <td>1101</td> <td>1106</td> <td>1111</td> </tr> <tr> <td>One-minute</td> <td>1059</td> <td>1104</td> <td>1109</td> <td>1114</td> </tr> <tr> <td>Start</td> <td>1100</td> <td>1105</td> <td>1110</td> <td>1115</td> </tr> </tbody> </table> <p>Note: Depending on entries classes may be combined and scored as a single class; or starts may be combined and scored as separate classes.</p>	<i>Signal</i>	<i>Spinnaker A</i>	<i>Spinnaker B</i>	<i>Non-Spin Racing</i>	<i>Non-Spin Cruising</i>	Warning	1055	1100	1105	1110	Preparatory	1056	1101	1106	1111	One-minute	1059	1104	1109	1114	Start	1100	1105	1110	1115
<i>Signal</i>	<i>Spinnaker A</i>	<i>Spinnaker B</i>	<i>Non-Spin Racing</i>	<i>Non-Spin Cruising</i>																						
Warning	1055	1100	1105	1110																						
Preparatory	1056	1101	1106	1111																						
One-minute	1059	1104	1109	1114																						
Start	1100	1105	1110	1115																						
Class Flags	<p>Spinnaker A - "9" flag</p> <p>Spinnaker B - "6" flag</p> <p>Non-Spinnaker Racing - "5" flag</p> <p>Non-Spinnaker Cruising - "white" square or pennant</p> <p>Competitors are not required to display the class flag</p>																									
Radio	Boats should monitor VHF Channel 68 for courtesy communications from the Race Committee.																									
Skippers' Meeting	<p>None.</p> <p>Preregistration on www.hhsa.org is required.</p>																									
Registration	HHSA entrants should register on the HHSA website. Non-HHSA entrants should submit the following information to the HHSA Rear Commodore Racing via e-mail at jichgag@aol.com or via mail at Michel Jichlinski, 2312 Ashboro Dr., Chevy Chase, MD 20815:																									



HHSA Sailing Instructions 2019

	<p>Boat name. Owner/skipper. Boat make and model. Owner club affiliation. PHRF Circular Random ratings. PHRF Upwind Sail Area-to-Displacement ratio. E-mail or phone contact for owner/skipper.</p> <p>An entrant list will be maintained on the HHSA web site racing page.</p>
Rendezvous	Race Committee at HHSA A at approx. 1000 hours
Start	Between Committee Boat and HHSA A
Finish	In Galesville between the RC Flag on the Racing Platform at the end of Pirates Cove pier and the Orange/White marker, PCRC Mark "X"
Course	<p>Leave to port: Can 83A, West River Bell G1, West River G1A</p> <p>In addition West River Markers 2, 3, 4, 5, and 6 plus the white shoal mark between Markers 3 and 5 shall be passed on the channel side.</p> <p>Approximately 13 nautical miles.</p>
Scoring	<p>Scoring will be Time-on-Time using PHRF Circular Random ratings and the following formulae:</p> <p>Corrected time = (elapsed time) x (time correction factor, TCF)</p> <p>$TCF = 550 / (550 + PHRF \text{ rating})$</p>
Check In	Upon reaching the starting area and prior to the race, boats shall check in with the Race Committee by coming close and hailing. Keep radio usage to a minimum.
Time Qualifications	In order for the race to qualify, the lead boat in each class must finish within six hours of the class start. The Race Committee will stay on station until at least 90 minutes after the last class qualifies. Boats finishing after the Race Committee has left station shall take their own finish times and report their results to the Race Committee on the same day of the event. Boats retiring from the race after starting should notify the Race Committee via Channel 68, or text the HHSA Rear Commodore Racing (Michel Jichlinski) at 301-536-8040.
Protests	The protest time limit is 2 hours after racing has concluded for the day.
Awards	Awards will be presented at the HHSA Winter Banquet. For HHSA boats, counts towards High Point, and Commodore's Cup. See HHSA Racing Rules for details.
Social	Skippers, crew, and guests are invited to join a post race gathering in Galesville at a local restaurant to be announced.
Other	Amendments to the Sailing Instructions will be posted no later than Friday August 24 on the HHSA web site: hhsa.org .



Appendix A - SPECIAL INSTRUCTIONS

8.1 Handicaps for Cruising Boats

Cruisers will be assigned provisional PHRF handicaps by the Official Scorer or by the Rear Commodore/Racing after the race based on the PHRF of New England posted ratings.

8.2 Grounding - Rule 42.3(i)

This modifies Rule 42. To get clear after grounding, a boat may use force applied by a propulsion engine provided the boat does not gain a significant advantage in the race.



Appendix B SUPPLEMENTARY COURSE INFORMATION

Location of Selected Marks

The following table shows approximate positions of HHS and Government marks. The location of PCRC marks is presented further below. A more complete listing can be found on the Racing website and in the HHS Course Book.

Mark	Latitude (N)	Longitude (W)	HHS
Herring Bay 1 (Green)	38° 44.433'	076° 30.838'	W
Herring Bay 2 (Red)	38° 44.526'	076° 32.698'	Y
81A (Green)	38° 43.576'	076° 29.939'	I
83A (Green)	38° 46.134'	076° 29.701'	O
HHS A (Yellow)	38° 44.647'	076° 31.993'	A
HHS B (Yellow)	38° 45.450'	076° 31.650'	B
HHS C (Yellow)	38° 45.500'	076° 30.320'	C
West River 1 (Green)	38° 51.851'	076° 26.999'	Z

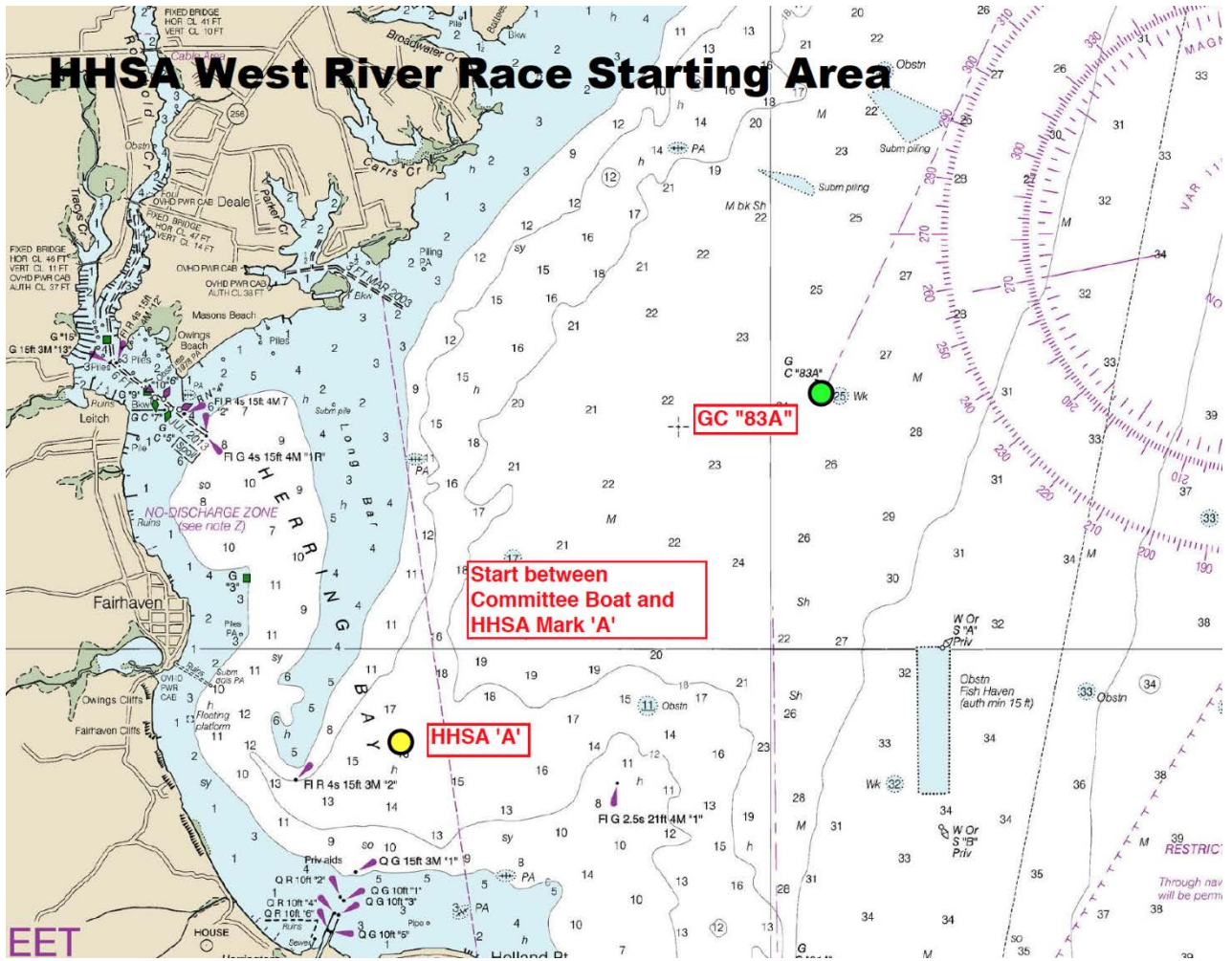


Location of Finish Line



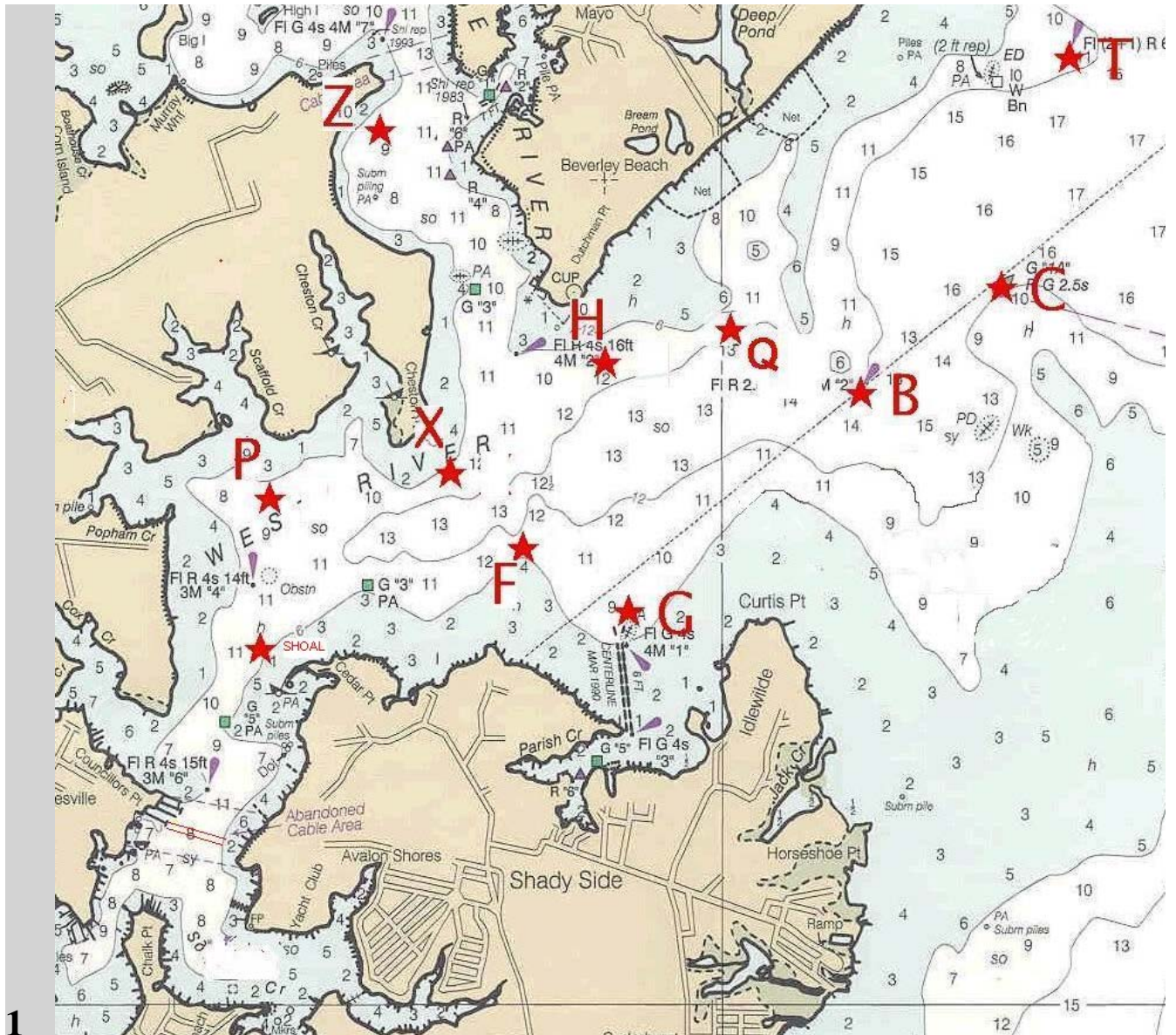


Starting Area





PCRC West River Marks



PCRC Mark Locations (Approximate):

S - (Shoal) 38 degrees 51'.0N, 76 degrees 31'.9 W

P - 38 degrees 51'.6N, 76 degrees 31'.9 W

X - 38 degrees 51'.5N, 76 degrees 31'.1 W

F - 38 degrees 51'.4N, 76 degrees 30'.8 W

G - 38 degrees 51'.2N, 76 degrees 30'.5 W



H - 38 degrees 51'.9N, 76 degrees 30'.7 W

Z- 38 degrees 52'.8N, 76 degrees 31'.3 W

Q- 38 degrees 52'.0N, 76 degrees 30'.1 W

GOVERNMENT MARKS:

B (R 2) 38 degrees 51'.94N, 76 degrees 26'.4 W

C (G 1A) 38 degrees 52'.20N, 76 degrees 28'.9 W

T (fl (2+1)R) 38 degrees 53'.00N, 76 degrees 28'.60 W