

# **HERRINGTON HARBOUR SAILING ASSOCIATION**



## **HHSA SAILING INSTRUCTIONS 2019**

Approved by the Board of Directors, Herrington Harbour Sailing Association, February 2019



## Table of Contents

Introduction .....	1
Starting Sequence .....	1
Designating Courses to be Sailed .....	1
Example Start Sequence .....	2
HHSA Wednesday Night Races .....	5
HHSA Bloody Point Race .....	6
HHSA Summer Regatta .....	7
HHSA Women's Regatta .....	9
HHSA Sharps Island Race .....	12
HHSA Great Bay Race .....	13
HHSA Double-handed Race .....	14
HHSA West River Race .....	15
HHSA Informal Cruise Pursuit Race .....	23
HHSA Autumn Classic Race .....	24
HHSA Frostbite Series (6 multi-race days) .....	25
Appendix A - Special Instructions for Cruising Classes .....	27
Appendix B - Special Instructions for a Rabbit Start .....	30



## Introduction

HSA racing events are governed by the “rules” as defined in the Racing Rules of Sailing (RRS) except as any of these are altered by these Sailing Instructions and any amendments or the HSA Racing Rules.

The current HSA Course Book and HSA Racing Rules are separate documents. However, they are part of the Sailing Instructions and any reference to the Sailing Instructions includes the Course Book and Racing Rules by reference.

## Starting Sequence

HSA uses the starting sequence as specified in Racing Rules of Sailing. Additionally, the club requires the use of the ‘L’ flag as defined in the back cover of the RRS to mean “come within hail or follow me” while the committee boat is going on station. The ‘L’ flag will be lowered exactly one minute before the next flag is to be raised accompanied by repetitive horn blasts. Together, these signals will indicate to competitors that the starting sequence is about to commence.

If the start of the race is delayed the AP flag will be displayed with two (2) sounds, and lowered with one (1) sound one minute before the new starting sequence begins.

## Designating Courses to be Sailed

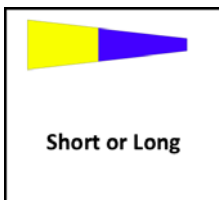
Class course boards hung on the non-starting side of the Committee Boat will indicate which option of the course is to be sailed – either Short or Long. The Sailing Instructions will specify the classes to be sailed and if starts are to be combined.

Numeral Pennant 5 will indicate the Non-Spinnaker Racing course, or the combined Non-Spinnaker Racing/Cruising course

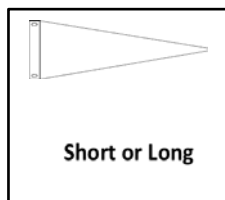
White Pennant will indicate the Non-Spinnaker Cruising Course

Numeral Pennant 6 will indicate the Combined Spinnaker Course, or the Spinnaker B course

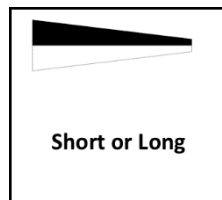
Numeral Pennant 9 will indicate the Spinnaker A course



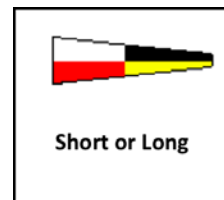
Non-Spin Racing Board & Combined Non-Spin Start Board



Non-Spin Cruising Board

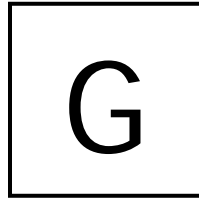


Spin B Board & Combined Spin Class Board



Spin A Board

A separate board with either a single letter A through Z or numeral 1 through 4 will indicate which course from the HSA Course Book will be sailed.



Example Course Board for Course “G”

**Example Start Sequence**

The following chart shows an example of a starting sequence with spinnaker boats starting first, followed by non-spinnaker boats.

**Multiple-Start Sequence**

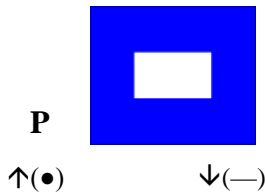
<i>Signal</i>	<i>Flag &amp; Sound</i>	<i>VHF (recommended)</i>	<i>Minutes before start signal</i>	<i>Example time for Wednesday races</i>
Follow-me/ Check-in	‘L’ at full hoist;	“Welcome, racers”		
	‘L’ lowered, multiple short horn blasts		6	1829
Warning	Spin Class Flag Raised; 1 horn blast	“5, 4, 3, 2, “	5	1830
Preparatory	‘P’ raised; 1 horn blast	“Spin Prep”	4	1831
One-minute	‘P’ lowered; 1 <b>long</b> horn blast	“5, 4, 3, 2, “	1	1834
Starting	Spin Class Flag lowered; Non-Spin Class Flag Raised; 1 sound (gun or horn)	“5, 4, 3, 2, all clear”	0	1835
Preparatory	‘P’ raised; 1 horn blast	“Non-Spin prep”	4	1836
One-Minute	‘P’ lowered; 1 <b>long</b> horn blast	“5, 4, 3, 2, “	1	1839
Starting	Non-Spin Class Flag lowered; 1 sound (gun or horn)	“5, 4, 3, 2, all clear”	0	1840



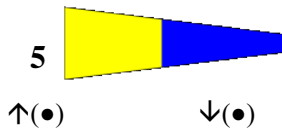
## Common Signals

The meanings of visual and sound signals commonly used at HHSA are stated below. An arrow pointing up or down (↑ ↓) means that a visual signal is displayed or removed. A dot (●) means a sound; five dashes (-----) mean repetitive sounds; a long dash (—) means a long sound; empty parentheses () indicate no sound. When a visual signal is displayed over a class flag, the signal only applies to that class.

### Starting Signals



**Preparatory:** Up - Four minutes until the class start. All boats in the class are considered racing. Down one minute before class start.



**Non-Spinnaker Racing, or Combined Racing/Cruising Start Class Warning:** Up at the warning signal for the non-spinnaker class. Down with gun or horn for the start.



**Spinnaker B, or Combined Spinnaker Class Warning:** Up at warning signal. Down with gun or horn for the start.

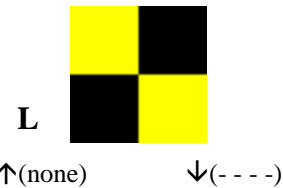


**Spinnaker A Class Warning:** Up at warning signal. Down with gun or horn for the start.

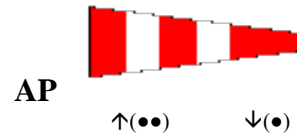


↑(●) ↓(●)

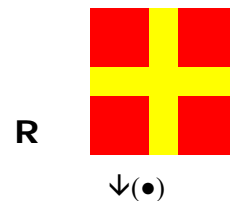
**Non-Spinnaker Cruising Class Warning:** Up at warning signal. Down with gun or horn for the start.



**L Flag:** Afloat: Come within hail or follow this boat. Down with multiple sounds one minute before new start sequence.



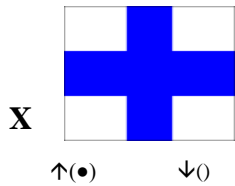
**Answering Pennant:** Races not started are postponed. Start sequence to commence one minute after removal.



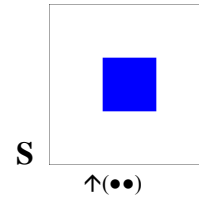
**R Flag:** When flown from the Committee Boat indicates that another race is planned. Down one minute before warning signal of next race.



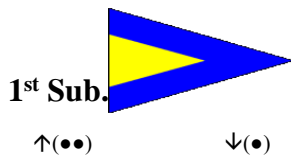
## Other Signals



**Individual Recall:** One or more boats were OCS. The flag is displayed until all boats have properly started or at the succeeding start's one-minute signal, whichever is first.



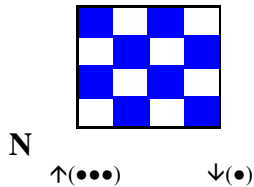
**S Flag:** Displayed with two sounds to indicate that course has been shortened.



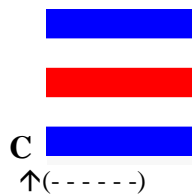
**General Recall:** The entire class will be restarted. The warning signal will be one-minute after the flag is removed.



**Y Flag:** When displayed from the committee boat, wear a personal floatation device.



**N Flag:** Races started are abandoned. Return to starting area. Start sequence will commence one minute after removal, unless all racing is subsequently abandoned.



**C Flag:** Displayed with repetitive sounds to indicate a change of course.



## HSA Wednesday Night Races

Dates	Practice Races .... Wed April 24 and Sat April 27 Series 1 ..... May 1 May 8, May 15, May 22, May 29, June 5 Series 2 ..... Jun 12, Jun 19, Jun 26, Jul 10, Jul 17, Jul 24 Series 3..... Jul 31, Aug 7, Aug 14 Aug 21, Aug 28, Sep 4 Season-End-Free-for-All ..... Sep 11		
Approx. Times	<i>Signal</i>	<i>Spinnaker</i>	<i>Non-Spinnaker</i>
	Warning	1830	1835
	Preparatory	1831	1836
	One-minute	1834	1839
	Start	1835	1840
Note: Non-Spinnaker Racing and Non-Spinnaker Cruising classes will start together and be scored separately. Class warning flags will be “6” for Spin, and “5” for combined Non-Spin.			
Skippers’ Meeting	None		
Rendezvous	Race Committee, within 2 miles of HSA A at approx. 1810 hours.		
Start	Between Committee Boat and drop mark or other nearby mark		
Finish	Between Committee Boat and HSA A		
Course	Designated by a sign boards on Committee Boat. The Race Committee must select a course from the HSA Course Book. Different versions of the course (Short or Long) may be set for the Spinnaker and Non-Spinnaker Classes.		
Time Qualifications	In order for the race to qualify, the lead boat in each class must finish within 2 hours after the starting signal, and each boat must finish before 9:30 pm or be scored as TLE. This modifies RRS 35.  The Race Committee will sound 3 blasts at 2130 hours to signal TLE for boats still on the course and announce on VHF Channel 68.		
Protests	The protest time limit is 2 hours after racing has concluded for the day.		
Awards	Wednesday races of Series 1, 2 and 3 count towards High Point and Commodore’s Cup. Awards given out per Series. See HSA Racing Rules for details.		
Social	An informal gathering at Skipper's Pier restaurant.		



## HHSA Bloody Point Race

Date	Saturday, May 18, 2019															
Approx. Times	<p>The table shows the approximate times for the race.</p> <table border="1"> <thead> <tr> <th><i>Signal</i></th> <th><i>Spinnaker</i></th> <th><i>Non-Spinnaker</i></th> </tr> </thead> <tbody> <tr> <td>Warning</td> <td>1355</td> <td>1400</td> </tr> <tr> <td>Preparatory</td> <td>1356</td> <td>1401</td> </tr> <tr> <td>One-minute</td> <td>1359</td> <td>1404</td> </tr> <tr> <td>Start</td> <td>1400</td> <td>1405</td> </tr> </tbody> </table> <p><b>Note:</b> Non-Spinnaker Racing and Non-Spinnaker Cruising will start together but will be scored separately. Class warning flags will be “6” for Spin and “5” for combined Non-Spin.</p>	<i>Signal</i>	<i>Spinnaker</i>	<i>Non-Spinnaker</i>	Warning	1355	1400	Preparatory	1356	1401	One-minute	1359	1404	Start	1400	1405
<i>Signal</i>	<i>Spinnaker</i>	<i>Non-Spinnaker</i>														
Warning	1355	1400														
Preparatory	1356	1401														
One-minute	1359	1404														
Start	1400	1405														
Skippers’ Meeting	<p>None.</p> <p>Preregistration on <a href="http://www.hhsa.org">www.hhsa.org</a> is recommended.</p>															
Rendezvous	Race Committee at HHSA A at approx. 1000 hours.															
Start	Between Committee Boat and HHSA A															
Finish	Between Committee Boat and HHSA A															
Course	The course shall be course ‘V’ from the HHSA Course Book. The course version (Long or Short) for each class will be designated by boards displayed on the Committee Boat.															
Time Qualifications	In order for the race to qualify, the lead boat in each class must finish within six hours of the class start. The Race Committee will stay on station until at least 90 minutes after the last class qualifies. Boats finishing after the Race Committee has left station shall take their own finish times in accordance with HHSA Rules 7.C & 8.B.															
Protests	The protest time limit is 2 hours after racing has concluded for the day.															
Awards	Counts towards High Point and Commodore’s Cup. See HHSA Racing Rules for details.															
Social	An informal gathering at a local restaurant or location announced by the Race Committee.															
Other	VHF Channel 68 will be monitored.															





## HHSA Summer Regatta

Date	Sunday, June 9, 2019															
Approx. Times	<p>The table shows the approximate times for the first race, with spinnaker boats starting first.</p> <table border="1"> <thead> <tr> <th><i>Signal</i></th> <th><i>Spinnaker</i></th> <th><i>Non-Spinnaker</i></th> </tr> </thead> <tbody> <tr> <td>Warning</td> <td>1055</td> <td>1100</td> </tr> <tr> <td>Preparatory</td> <td>1056</td> <td>1101</td> </tr> <tr> <td>One-minute</td> <td>1059</td> <td>1104</td> </tr> <tr> <td>Start</td> <td>1100</td> <td>1105</td> </tr> </tbody> </table> <p><b>Note:</b> Non-Spinnaker Racing and Non-Spinnaker Cruising will start together but will be scored separately. Class warning flags will be: “6” for Spin and “5” for combined Non-Spin.</p>	<i>Signal</i>	<i>Spinnaker</i>	<i>Non-Spinnaker</i>	Warning	1055	1100	Preparatory	1056	1101	One-minute	1059	1104	Start	1100	1105
<i>Signal</i>	<i>Spinnaker</i>	<i>Non-Spinnaker</i>														
Warning	1055	1100														
Preparatory	1056	1101														
One-minute	1059	1104														
Start	1100	1105														
Skippers’ Meeting	<p>None.</p> <p>Preregistration on <a href="http://www.hhsa.org">www.hhsa.org</a> is recommended.</p>															
Rendezvous	Race Committee in vicinity of HHSA A at approx. 1000 hours															
Start	Between Committee Boat and nearby drop mark															
Finish	Between Committee Boat and designated mark															
Course	The courses sailed will be identified by sign boards on the committee boat, and will be either “2”, “3” or “4” as shown on Page 16 of the Course Book.															
Scoring	PHRF windward/leeward ratings will be used for this regatta.															
Time Qualifications	<p>In order for a race to qualify, the lead boat in each class must finish within 75 minutes after the starting signal.</p> <p>Each boat must finish within 30 minutes after the lead boat in her class or be scored as TLE. This modifies RRS 35.</p>															
Protests	The protest time limit is 2 hours after racing has concluded for the day.															
Awards	Counts towards High Point and Commodore’s Cup. Awards given out per Series. See HHSA Racing Rules for details.															
Social	An informal gathering at a local restaurant or location announced by the Race Committee.															
Other	VHF Channel 68 will be monitored.															



	<p>Multiple races are planned. If a subsequent race is anticipated, the Race Committee will announce its intentions as boats finish the preceding race, and may fly Flag R. If Flag R is raised, it will be lowered with one sound one minute before the <b>Warning</b> signal for the subsequent race.</p>
--	---



# HHSA Women's Regatta

## Sailing Instructions

**1 HERRINGTON HARBOUR SAILING ASSOCIATION**  
Saturday, June 15, 2019

**Sanction #:** N/A

**Entry Due:** Thursday, June 13, 2019

**Entry Fee:** N/A

**Registration:** [www.hhsa.org](http://www.hhsa.org) (Event Calendar) or send intention to race and the following information to Eunice Lin: Skipper and owner name, boat name, boat make and model, owner/skipper club affiliation, PHRF rating, skipper's e-mail and cell phone number.

**Contact:** Eunice Lin at (703) 336-7075 or [eunicelin78@yahoo.com](mailto:eunicelin78@yahoo.com)

**Rules:** The regatta will be governed by the rules as defined in The Racing Rules of Sailing (RRS), as amended by the Sailing Instructions.

**Eligibility:** The regatta is open to boats with crews made up solely of women. Boats are encouraged to have a current PHRF certificate. HHSA, the Organizing Authority, may assign a courtesy rating to boats without a certificate.

**Rendezvous:** A Skippers' meeting will be held at 0900, at the Herrington Harbour North Slip Holders' patio (near C Dock, next to the marina office). Rendezvous will be at approximately 1000 hours in the vicinity of HHSA "A" (see below for mark coordinates). Racing will take place on Herring Bay, MD. The Race Committee will display Code Flag Lima and move to a suitable nearby starting area.

**Radio:** Boats should monitor VHF 68 for courtesy communications from the Race Committee.

**Start:** Between orange flag on Race Committee signal boat and nearby inflatable mark.

**Signals:** RRS 26 (Starting Races) for the first race:

<i>Signal</i>	<i>Spinnaker</i>	<i>Non-Spinnaker</i>
Warning	1055	1100
Preparatory	1056	1101
One-minute	1059	1104
Start	1100	1105

**Note:** If entries warrant, there will be separate starts for Spinnaker and Non-Spinnaker (otherwise, there will be a single Non-Spinnaker start). Class flags will be "6" for Spin and "5" for Non-Spin.

**Course:** Multiple races are planned. Courses will be either drop mark or a combination of government marks and HHSA club marks, as described in the event Sailing Instructions which will be posted on [www.hhsa.org](http://www.hhsa.org) (Racing Page). The Race Committee will select a course from the HHSA Course Book (available on [www.hhsa.org](http://www.hhsa.org) (Racing Page)) and will designate courses by displaying letters on boards hung from the side of the signal boat facing away from the starting line. If a subsequent race is anticipated, the Race Committee will raise Flag "R". The starting sequence for subsequent races will begin one (1) minute after lowering



Code Flag "R".

**Finish:** Between orange flag on a Race Committee signal boat (or other boat designated by Race Committee) and a nearby mark.

**Scoring:** Scoring will be Time-on-Time using PHRF ratings and the following formulae:

Corrected time = (elapsed time) x (time correction factor, TCF)

$TCF = 550 / (550 + PHRF \text{ rating})$

**Time Limit:** In order for a race to qualify, the lead boat in each class must finish within 75 minutes of the start. Each boat must finish within 30 minutes of the first boat in its class or be scored as TLE. This modifies RRS 35.

**Protests:** Any boat intending to file a protest shall inform the Race Committee before departing the race area. Protests must be submitted in writing within 90 minutes of completion of the last race of the day. Protest hearings and arbitration meetings will be as soon as possible on the day of the regatta.

**Social:** Participants are invited to the shore party hosted at one of the Herrington Harbour Marinas. Overnight slips at either South or North marinas should be available to participants. Call ahead to reserve a slip. Details will be provided in the event Sailing Instructions or amendments thereto, which will be posted on [www.hhsa.org](http://www.hhsa.org) by June 11, 2019.

**Awards:** 1<sup>st</sup>/3, 2<sup>nd</sup>/4 & 3<sup>rd</sup>/6+ finishers. Awards will be presented at the HNSA Annual Banquet or mailed to winners. For HNSA boats, the results do not count towards High Point.

**Other:** By participation or entry into an event each boat owner/skipper agrees to abide by the RRS and HNSA Sailing Instructions for the HNSA event in which her boat participates. In consideration of being permitted to enter these events, being knowledgeable of the risks of competition sailing, and knowing that it is her sole responsibility to decide whether to enter and continue any race, each boat owner/skipper voluntarily assumes the risks of participation in these events and releases HNSA and the people conducting these events from all liability in connection with any injury or damage that may occur.

**HNSA Marks:** The following table shows approximate positions of HNSA marks. A more complete listing can be found in the HNSA Sailing Instructions and HNSA Course book (posted on [www.hhsa.org](http://www.hhsa.org) (Racing Page)).

Mark	Latitude (N)	Longitude (W)
Herring Bay 1 (Green)	38° 44.433'	076° 30.838'
Herring Bay 2 (Red)	38° 44.526'	076° 32.698'
81A (Green)	38° 43.576'	076° 29.939'
83A (Green)	38° 46.134'	076° 29.701'



## HHSA Sailing Instructions 2019

HHSA A (Yellow)	38° 44.647'	076° 31.993'
HHSA B (Yellow)	38° 45.450'	076° 31.650'
HHSA C (Yellow)	38° 45.500'	076° 30.320'



## HHSA Sharps Island Race

Date	Saturday, June 22, 2019															
Approx. Times	<p>The table shows the approximate times for the race.</p> <table border="1"> <thead> <tr> <th><i>Signal</i></th> <th><i>Spinnaker</i></th> <th><i>Non-Spinnaker</i></th> </tr> </thead> <tbody> <tr> <td>Warning</td> <td>1655</td> <td>1700</td> </tr> <tr> <td>Preparatory</td> <td>1656</td> <td>1701</td> </tr> <tr> <td>One-minute</td> <td>1659</td> <td>1704</td> </tr> <tr> <td>Start</td> <td>1700</td> <td>1705</td> </tr> </tbody> </table> <p><b>Note:</b> Non-Spinnaker Racing and Non-Spinnaker Cruising will start together but will be scored separately. Class warning flags will be “6” for Spin and “5” for combined Non-Spin.</p>	<i>Signal</i>	<i>Spinnaker</i>	<i>Non-Spinnaker</i>	Warning	1655	1700	Preparatory	1656	1701	One-minute	1659	1704	Start	1700	1705
<i>Signal</i>	<i>Spinnaker</i>	<i>Non-Spinnaker</i>														
Warning	1655	1700														
Preparatory	1656	1701														
One-minute	1659	1704														
Start	1700	1705														
Skippers’ Meeting	<p>None.</p> <p>Preregistration on <a href="http://www.hhsa.org">www.hhsa.org</a> is recommended</p>															
Rendezvous	Race Committee at HHSA A at approx. 1600 hours															
Start	Between Committee Boat and HHSA A															
Finish	Between Committee Boat and HHSA A															
Course	The course shall be course U from the HHSA Course Book. The course version (Long or Short) for each class will be designated by boards displayed on the Committee Boat.															
Time Qualifications	In order for the race to qualify, the lead boat in each class must finish within six hours of the class start. The Race Committee will stay on station until at least 90 minutes after the last class qualifies. Boats finishing after the Race Committee has left station shall take their own finish times in accordance with HHSA Rules 7.C & 8.B.															
Protests	The protest time limit is 2 hours after racing has concluded for the day.															
Awards	Counts towards High Point and Commodore’s Cup.															
Social	An informal gathering at a local restaurant or location announced by the Race Committee.															
Other	VHF Channel 68 will be monitored.															



## HHSA Great Bay Race

Date	Sunday, July 21, 2019															
Approx. Times	<p>The table shows the approximate times for the race.</p> <table border="1"> <thead> <tr> <th><i>Signal</i></th> <th><i>Spinnaker</i></th> <th><i>Non-Spinnaker</i></th> </tr> </thead> <tbody> <tr> <td>Warning</td> <td>1355</td> <td>1400</td> </tr> <tr> <td>Preparatory</td> <td>1356</td> <td>1401</td> </tr> <tr> <td>One-minute</td> <td>1359</td> <td>1404</td> </tr> <tr> <td>Start</td> <td>1400</td> <td>1405</td> </tr> </tbody> </table> <p><b>Note:</b> Non-Spinnaker Racing and Non-Spinnaker Cruising will start together but will be scored separately. Class warning flags will be “6” for Spin and “5” for combined Non-Spin.</p>	<i>Signal</i>	<i>Spinnaker</i>	<i>Non-Spinnaker</i>	Warning	1355	1400	Preparatory	1356	1401	One-minute	1359	1404	Start	1400	1405
<i>Signal</i>	<i>Spinnaker</i>	<i>Non-Spinnaker</i>														
Warning	1355	1400														
Preparatory	1356	1401														
One-minute	1359	1404														
Start	1400	1405														
Skippers’ Meeting	<p>None.</p> <p>Preregistration on <a href="http://www.hhsa.org">www.hhsa.org</a> is recommended.</p>															
Rendezvous	Race Committee, in vicinity of HHSA A at approx. 1300 hours.															
Start	Between Committee Boat and HHSA A															
Finish	Between Committee Boat and HHSA A															
Course	The course shall be course ‘X’ from the HHSA Course Book. The course version (Long or Short) for each class will be designated by boards displayed on the Committee Boat.															
Time Qualifications	In order for the race to qualify, the lead boat in each class must finish within six hours of the class start. The Race Committee will stay on station until at least 90 minutes after the last class qualifies. Boats finishing after the Race Committee has left station shall take their own finish times in accordance with HHSA Rules 7.C & 8.B.															
Protests	The protest time limit is 2 hours after racing has concluded for the day.															
Awards	Counts towards High Point and Commodore’s Cup. See HHSA Racing Rules for details.															
Social	An informal gathering at a local restaurant or location announced by the Race Committee.															
Other	VHF Channel 68 will be monitored.															



## HHS Double Handed Race

Date	Sunday, August 11, 2019										
Approx. Times	<p>The table shows the approximate times for the race.</p> <table><thead><tr><th><i>Signal</i></th><th><i>All Boats</i></th></tr></thead><tbody><tr><td>Warning</td><td>1055</td></tr><tr><td>Preparatory</td><td>1056</td></tr><tr><td>One-minute</td><td>1059</td></tr><tr><td>Start</td><td>1100</td></tr></tbody></table> <p><b>Note:</b> One start. Scorer may score multiple classes. Class flag will be the HHS burgee.</p>	<i>Signal</i>	<i>All Boats</i>	Warning	1055	Preparatory	1056	One-minute	1059	Start	1100
<i>Signal</i>	<i>All Boats</i>										
Warning	1055										
Preparatory	1056										
One-minute	1059										
Start	1100										
Skippers' Meeting	<p>None.</p> <p>Preregistration on <a href="http://www.hhsa.org">www.hhsa.org</a> is recommended</p>										
Rendezvous	Race Committee at HHS A at approx. 1000 hours										
Start	Between the Committee Boat and nearby mark										
Finish	Between the Committee Boat and HHS A										
Course	Designated by a sign boards on Committee Boat. The Race Committee shall select a course from the HHS Course Book.										
Time Qualifications	In order for the race to qualify, the lead boat in each class must finish within 3 hours of the start. Each boat must finish 90 mins. of the first boat or be scored as TLE. This modifies RRS 35.										
Protests	The protest time limit is 2 hours after racing has concluded for the day.										
Awards	Does not count towards High Point. Counts for Commodore's Cup.										
Social	An informal gathering at a local restaurant or location announced by the Race Committee.										
Other	<p>Each participating vessel shall have two people on board. Depending on entries, there may be classes for spinnaker, non-spinnaker, and mixed-doubles.</p> <p>Use of autopilots are permitted during the race.</p>										





## HHSA West River Race

Date	Saturday, August 24, 2019																									
Eligibility	<p>All members of HHSA, PCRC, and SMSA are invited to participate. There is no fee for entry. Starts will be given for the following classes depending on entries:</p> <p>Spin A (valid PHRF Rating less than 100)</p> <p>Spin B (valid PHRF Rating greater than 100)</p> <p>Non-Spin Racing (boats with an upwind Sail Area-to-Displacement ratio equal to or greater than 18.0)</p> <p>Non-Spin Cruising (boats with an upwind Sail Area-to-Displacement ratio less than 18.0)</p>																									
Approx. Times	<p>The table shows the approximate times for the race.</p> <table border="1"> <thead> <tr> <th><i>Signal</i></th> <th><i>Spinnaker A</i></th> <th><i>Spinnaker B</i></th> <th><i>Non-Spin Racing</i></th> <th><i>Non-Spin Cruising</i></th> </tr> </thead> <tbody> <tr> <td>Warning</td> <td>1055</td> <td>1100</td> <td>1105</td> <td>1110</td> </tr> <tr> <td>Preparatory</td> <td>1056</td> <td>1101</td> <td>1106</td> <td>1111</td> </tr> <tr> <td>One-minute</td> <td>1059</td> <td>1104</td> <td>1109</td> <td>1114</td> </tr> <tr> <td>Start</td> <td>1100</td> <td>1105</td> <td>1110</td> <td>1115</td> </tr> </tbody> </table> <p>Note: Depending on entries classes may be combined and scored as a single class; or starts may be combined and scored as separate classes.</p>	<i>Signal</i>	<i>Spinnaker A</i>	<i>Spinnaker B</i>	<i>Non-Spin Racing</i>	<i>Non-Spin Cruising</i>	Warning	1055	1100	1105	1110	Preparatory	1056	1101	1106	1111	One-minute	1059	1104	1109	1114	Start	1100	1105	1110	1115
<i>Signal</i>	<i>Spinnaker A</i>	<i>Spinnaker B</i>	<i>Non-Spin Racing</i>	<i>Non-Spin Cruising</i>																						
Warning	1055	1100	1105	1110																						
Preparatory	1056	1101	1106	1111																						
One-minute	1059	1104	1109	1114																						
Start	1100	1105	1110	1115																						
Class Flags	<p>Spinnaker A - "9" flag</p> <p>Spinnaker B - "6" flag</p> <p>Non-Spinnaker Racing - "5" flag</p> <p>Non-Spinnaker Cruising - "white" square or pennant</p> <p>Competitors are not required to display the class flag</p>																									
Radio	Boats should monitor VHF Channel 68 for courtesy communications from the Race Committee.																									
Skippers' Meeting	<p>None.</p> <p>Preregistration on <a href="http://www.hhsa.org">www.hhsa.org</a> is required.</p>																									
Registration	<p>HHSA entrants should register on the HHSA website. Non-HHSA entrants should submit the following information to the HHSA Rear Commodore Racing via e-mail at <a href="mailto:jichgag@aol.com">jichgag@aol.com</a> or via mail at Michel Jichlinski, 2312 Ashboro Dr., Chevy Chase, MD 20815:</p> <p>Boat name. Owner/skipper. Boat make and model. Owner club affiliation. PHRF Circular Random ratings. PHRF Upwind Sail Area-to-Displacement ratio. E-mail or phone contact for owner/skipper.</p>																									



## HHSA Sailing Instructions 2019

	An entrant list will be maintained on the HHSA web site racing page.
Rendezvous	Race Committee at HHSA A at approx. 1000 hours
Start	Between Committee Boat and HHSA A
Finish	In Galesville between the RC Flag on the Racing Platform at the end of Pirates Cove pier and the Orange/White marker, PCRC Mark "X"
Course	Leave to port: Can 83A, West River Bell G1, West River G1A In addition West River Markers 2, 3, 4, 5, and 6 plus the white shoal mark between Markers 3 and 5 shall be passed on the channel side. Approximately 13 nautical miles.
Scoring	Scoring will be Time-on-Time using PHRF Circular Random ratings and the following formulae:  Corrected time = (elapsed time) x (time correction factor, TCF)  $TCF = 550 / (550 + PHRF \text{ rating})$
Check In	Upon reaching the starting area and prior to the race, boats shall check in with the Race Committee by coming close and hailing. Keep radio usage to a minimum.
Time Qualifications	In order for the race to qualify, the lead boat in each class must finish within six hours of the class start. The Race Committee will stay on station until at least 90 minutes after the last class qualifies. Boats finishing after the Race Committee has left station shall take their own finish times and report their results to the Race Committee on the same day of the event. Boats retiring from the race after starting should notify the Race Committee via Channel 68, or text the HHSA Rear Commodore Racing (Michel Jichlinski) at 301-536-8040.
Protests	The protest time limit is 2 hours after racing has concluded for the day.
Awards	Awards will be presented at the HHSA Winter Banquet. For HHSA boats, counts towards High Point, and Commodore's Cup. See HHSA Racing Rules for details.
Social	Skippers, crew, and guests are invited to join a post race gathering in Galesville at a local restaurant to be announced.
Other	Amendments to the Sailing Instructions will be posted no later than Friday August 24 on the HHSA web site: <a href="http://hhsa.org">hhsa.org</a> .



## **WEST RIVER RACE SPECIAL INSTRUCTIONS**

### **8.1 Handicaps for Cruising Boats**

Cruisers will be assigned provisional PHRF handicaps by the Official Scorer or by the Rear Commodore/Racing after the race based on the PHRF of New England posted ratings.

### **8.2 Grounding - Rule 42.3(i)**

This modifies Rule 42. To get clear after grounding, a boat may use force applied by a propulsion engine provided the boat does not gain a significant advantage in the race.



## SUPPLEMENTARY COURSE INFORMATION

### Location of Selected Marks

The following table shows approximate positions of HHS and Government marks. The location of PCRC marks is presented further below. A more complete listing can be found on the Racing website and in the HHS Course Book.

Mark	Latitude (N)	Longitude (W)	HHS
Herring Bay 1 (Green)	38° 44.433'	076° 30.838'	W
Herring Bay 2 (Red)	38° 44.526'	076° 32.698'	Y
81A (Green)	38° 43.576'	076° 29.939'	I
83A (Green)	38° 46.134'	076° 29.701'	O
HHS A (Yellow)	38° 44.647'	076° 31.993'	A
HHS B (Yellow)	38° 45.450'	076° 31.650'	B
HHS C (Yellow)	38° 45.500'	076° 30.320'	C
West River 1 (Green)	38° 51.851'	076° 26.999'	Z

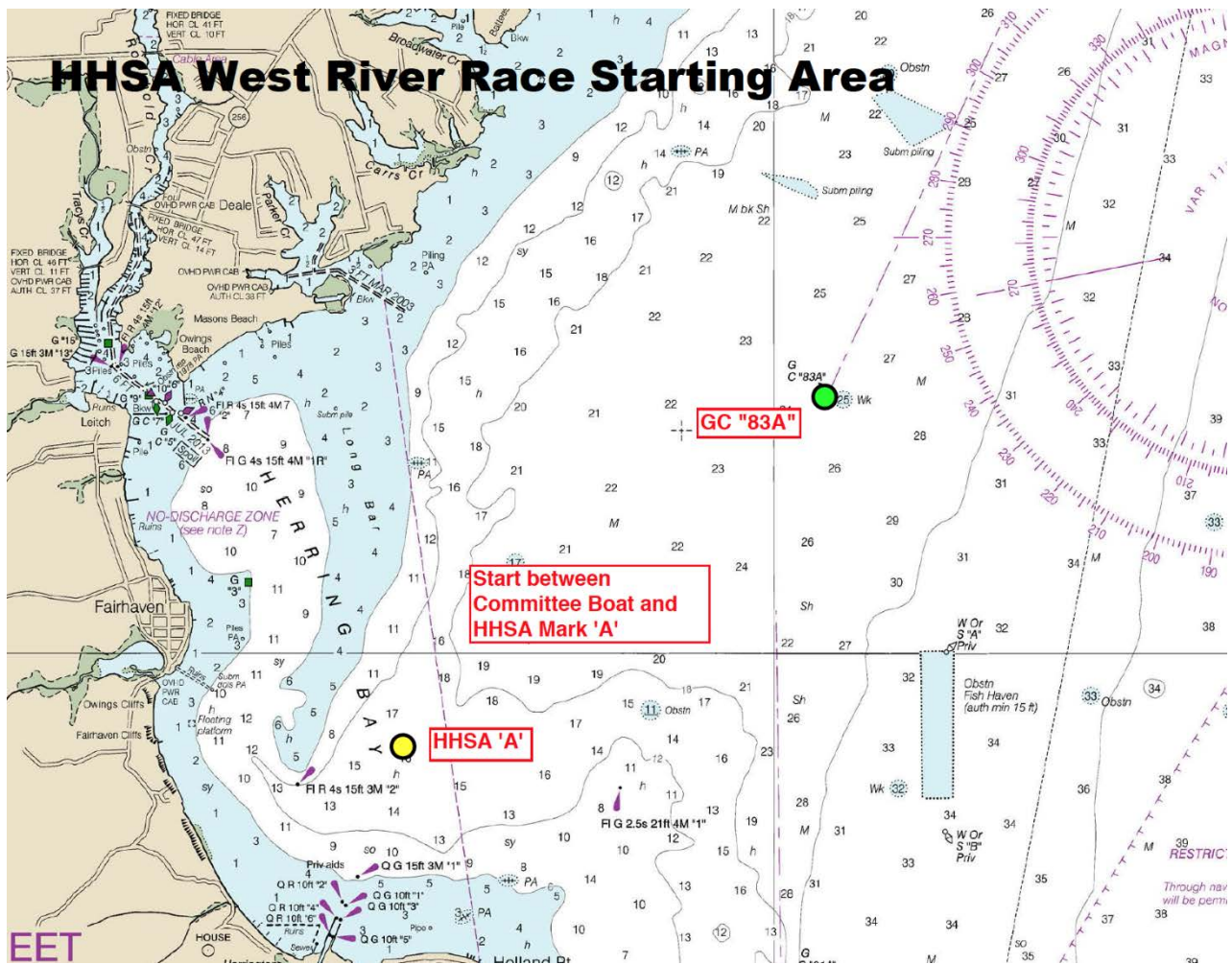


## Location of Finish Line for West River Race



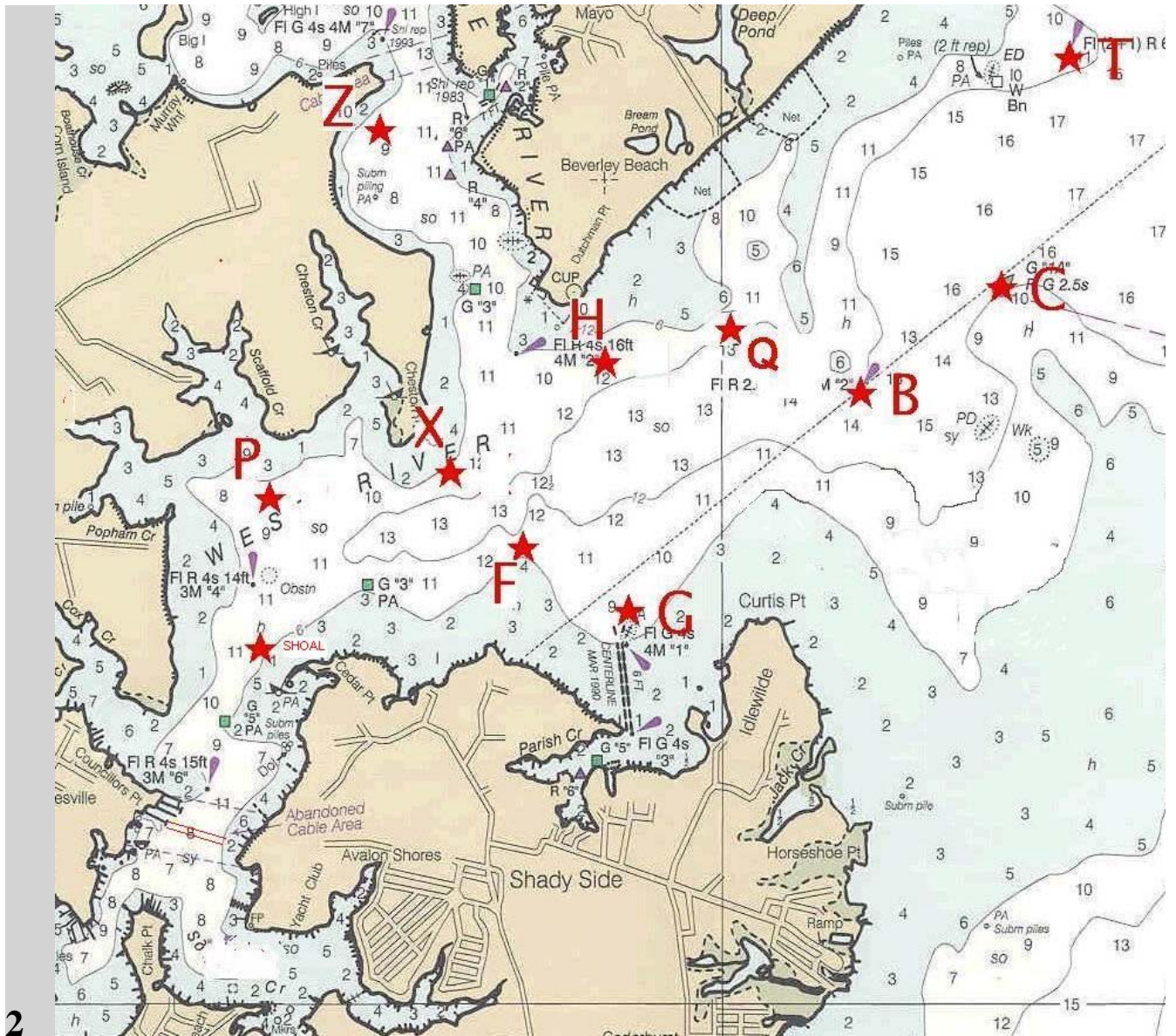


# West River Race Starting Area





## PCRC West River Marks



### PCRC Mark Locations (Approximate):

**S - (Shoal)** 38 degrees 51'.0N, 76 degrees 31'.9 W

**P -** 38 degrees 51'.6N, 76 degrees 31'.9 W

**X -** 38 degrees 51'.5N, 76 degrees 31'.1 W

**F -** 38 degrees 51'.4N, 76 degrees 30'.8 W

**G -** 38 degrees 51'.2N, 76 degrees 30'.5 W



**H - 38 degrees 51'.9N, 76 degrees 30'.7 W**

**Z- 38 degrees 52'.8N, 76 degrees 31'.3 W**

**Q- 38 degrees 52'.0N, 76 degrees 30'.1 W**

**GOVERNMENT MARKS:**

**B (R 2) 38 degrees 51'.94N, 76 degrees 26'.4 W**

**C (G 1A) 38 degrees 52'.20N, 76 degrees 28'.9 W**

**T (fl (2+1)R) 38 degrees 53'.00N, 76 degrees 28'.60 W**





## HNSA Informal Cruise Pursuit Race

Date	Saturday, (TBD)
Registration	Those wishing to participate will need to register their intent by the Thursday prior to the race date. Registration forms will be available on the HNSA website and via email to HNSA members approximately one week prior to the race.
Start Times	The boat with the highest handicap rating will start at 1000 hours. See additional information below.
Skippers' Meetings	0830 hours at both the HNS bulletin board and the HNS Marina Office. At that time the destination will be announced, the finish mark will be announced, and each boat will be given a starting time.
Rendezvous	Race Committee at HNSA A.
Classes	There will be a Double-handed Class and an Open Class for boats with more than two crew.
Start	“Pursuit Start” at HNSA A – The boat with the highest PHRF or assigned handicap rating will start at 1000 hours, and thereafter each boat will start according to the start times provided at the skippers' meeting.  The time-on-distance scoring method will be used.
Finish	Racers will take their own times when they reach a point where the finishing mark is abeam of their mast and they are within 100 feet of the designated finish mark. The first boat to finish will be the winner.
Course	To the weekend's cruising destination which will be announced at skippers' meeting.
Time Qualifications	There are no time limits; participants are encouraged to arrive at the destination by 1700.
Protests	Not encouraged, but will be adjudicated during Happy Hour by all present.
Awards	These are special interest races and will not be scored for High Point purposes. Special awards may be presented.
Social	Rafting Happy Hour ~1700 hrs. Bring hors d'oeuvres to share and your own drink.
Other	VHF Channel 68 will be monitored.



## HHS A Autumn Classic Race

Date	Sunday, October 13, 2018															
Approx. Times	<p>The table shows the approximate times for the race.</p> <table border="1"><thead><tr><th><i>Signal</i></th><th><i>Spinnaker</i></th><th><i>Non-Spinnaker</i></th></tr></thead><tbody><tr><td>Warning</td><td>1055</td><td>1100</td></tr><tr><td>Preparatory</td><td>1056</td><td>1101</td></tr><tr><td>One-minute</td><td>1059</td><td>1104</td></tr><tr><td>Start</td><td>1100</td><td>1105</td></tr></tbody></table> <p><b>Note:</b> Non-Spinnaker Racing and Non-Spinnaker Cruising will start together but will be scored separately. Class warning flags will be “6” for Spin and “5” for combined Non-Spin.</p>	<i>Signal</i>	<i>Spinnaker</i>	<i>Non-Spinnaker</i>	Warning	1055	1100	Preparatory	1056	1101	One-minute	1059	1104	Start	1100	1105
<i>Signal</i>	<i>Spinnaker</i>	<i>Non-Spinnaker</i>														
Warning	1055	1100														
Preparatory	1056	1101														
One-minute	1059	1104														
Start	1100	1105														
Skippers’ Meeting	None. Preregistration on <a href="http://www.hhsa.org">www.hhsa.org</a> is recommended.															
Rendezvous	Race Committee at HHS A A at approx. 1000 hours															
Start	Between Committee Boat and nearby mark															
Finish	Between Committee Boat and HHS A A															
Course	The Race Committee shall select a course from the HHS A Course Book. The course version (Long or Short) for each class will be designated by boards displayed on the Committee Boat.															
Time Qualifications	In order for the race to qualify, the lead boat in each class must finish by 1400 hours. Each boat must finish by 1530 hours or be scored as TLE. This modifies RRS 35.															
Protests	The protest time limit is 2 hours after racing has concluded for the day.															
Awards	Counts towards High Point and Commodore’s Cup. See HHS A Racing Rules for details.															
Social	An informal gathering at a local restaurant or location announced by the Race Committee.															
Other	VHF Channel 68 will be monitored.															



## HHS Frostbite Series (6 multi-race Days)

Dates	Sundays Nov 3, Nov 10, Nov 17, Nov 24, Dec 1, Dec 8															
Approx. Times for 1 <sup>st</sup> Race	<table border="1"> <thead> <tr> <th><i>Signal</i></th> <th><i>Sound</i></th> <th><i>All Boats</i></th> </tr> </thead> <tbody> <tr> <td>Warning</td> <td>(●)</td> <td>1155</td> </tr> <tr> <td>Preparatory</td> <td>(●)</td> <td>1156</td> </tr> <tr> <td>One-minute</td> <td>(—)</td> <td>1159</td> </tr> <tr> <td>Start</td> <td>(●)</td> <td>1200</td> </tr> </tbody> </table> <p>The table shows the approximate times for the first race. Multiple races may be sailed. The starting sequence for subsequent races will begin as soon as practical after all boats have finished the previous race. The class flag shall be a “5” Flag.</p>	<i>Signal</i>	<i>Sound</i>	<i>All Boats</i>	Warning	(●)	1155	Preparatory	(●)	1156	One-minute	(—)	1159	Start	(●)	1200
<i>Signal</i>	<i>Sound</i>	<i>All Boats</i>														
Warning	(●)	1155														
Preparatory	(●)	1156														
One-minute	(—)	1159														
Start	(●)	1200														
Skippers’ Meeting	None. Preregistration on <a href="http://www.hhsa.org">www.hhsa.org</a> is recommended.															
Rendezvous	Race Committee at HHS A or its vicinity at approx. 1130															
Start	Between Committee Boat and drop mark or other nearby mark															
Finish	Between Committee Boat and nearby mark															
Course ‡	Designated by sign boards displayed on the Committee Boat. The Race Committee shall select Frostbite Course A, B, or C from the HHS Course book, and will select courses that will allow for races to be completed in approximately 1 hour.															
Time Qualifications	<p>In order for the first race to qualify, the lead boat in must finish within 90 minutes after the starting signal, and each boat must finish within 45 minutes of the first boat or be scored as TLE. There is no time limit for subsequent races. No race will be started after 1430.</p> <p>The Race Committee will announce TLE for boats still on the course on VHF Channel 68. This modifies RRS 35.</p>															
Protests	The protest time limit is 2 hours after racing has concluded for the day.															
Awards	Does not count towards the season High Point, but does count for Commodore’s Cup. Awards given out for the Series. See HHS Racing Rules for details.															



<p>Special Instructions</p>	<p>Races are for non-spinnaker boats. Double headsails are not permitted. Whisker poles are not permitted. After a boat has started, crew members wearing PFD's are <b>only</b> allowed out of the cockpit during a tack or a gybe to assist moving the headsail around the mast and standing rigging and skirt the headsail. Sitting on the rail is not permitted unless when doing so, feet are in the cockpit. Headsail changes after a boat has started are not permitted. Reefing or un-reefing the mainsail after a boat has started is not permitted. Rolling/unrolling a roller furling headsail is permitted.</p> <p>At the discretion of the Race Committee, racing <b>may not</b> be conducted if there is heavy ice in either of the marinas or if the true wind speed is over 20 knots. The RC is encouraged to announce cancellations in advance on VHF Channel 68.</p> <p>Participating boats shall comply with PHRF of the Chesapeake Category 4 Special Safety Regulations.</p>								
<p>Social</p>	<p>An informal gathering at a local restaurant after the race.</p>								
<p>Scoring</p>	<p>Scoring shall be per the HSA Racing Rules, Section 17 Scoring, except that Part F. is revised as follows:</p> <p style="padding-left: 40px;">F. For the series, the number of races scored will be dependent on the number of completed races in the series, as described in the following table:</p> <table border="1" data-bbox="451 1129 1406 1289" style="margin-left: 80px;"> <thead> <tr> <th>Number of Races Completed</th> <th>Throw Outs</th> </tr> </thead> <tbody> <tr> <td style="text-align: center;">8 – 14</td> <td style="text-align: center;">2</td> </tr> <tr> <td style="text-align: center;">5 - 7</td> <td style="text-align: center;">1</td> </tr> <tr> <td style="text-align: center;">&lt; 5</td> <td style="text-align: center;">0</td> </tr> </tbody> </table> <p>And, a boat that did not start, did not finish, retired after finishing, was TLE, did not come to the starting area, or was disqualified shall be scored points for the finish place one more than the number of boats that finished. This changes RRS A 4.2, RRS A 9, HSA Rule 18.C.4 and HSA Rule 18.C.5.</p>	Number of Races Completed	Throw Outs	8 – 14	2	5 - 7	1	< 5	0
Number of Races Completed	Throw Outs								
8 – 14	2								
5 - 7	1								
< 5	0								



## Appendix A - SPECIAL INSTRUCTIONS FOR CRUISING CLASSES

### *Handicaps for Cruiser Racing*

Cruisers will be assigned provisional PHRF handicaps at the skippers' meeting or by the Rear Commodore/Racing after the race unless a skipper can show a valid certificate.

### *Course Information*

The day's race course will be selected from the HHSA Course Book, copies of which are available for download from the HHSA Racing website and upon request from the Rear Commodore/Racing.

The following table shows approximate positions of marks that are most often used in setting courses. A more complete listing can be found on the Racing website and in the HHSA Course Book.

Mark	Latitude (N)	Longitude (W)	HHSA
Herring Bay 1 (Green)	38° 44.433'	076° 30.838'	W
Herring Bay 2 (Red)	38° 44.526'	076° 32.698'	Y
81A (Green)	38° 43.576'	076° 29.939'	I
83A (Green)	38° 46.134'	076° 29.701'	O
HHSA A (Yellow)	38° 44.647'	076° 31.993'	A
HHSA B (Yellow)	38° 45.450'	076° 31.650'	B
HHSA C (Yellow)	38° 45.500'	076° 30.320'	C
HHSA Inflated Tetrahedron	Variable	Variable	U
HHSA Inflated Cylinder	Variable	Variable	G

### *Racing Rules for Cruisers*

Upon reaching the starting area and prior to the race, boats shall check in with the Race Committee by coming close and hailing. Note the race course marks displayed on sign boards on the committee boat lifelines on the side away from the starting line. Keep radio usage to a minimum, but monitor **VHF Channel 68** before and during the race.



## Example Starting Sequence

<i>Signal</i>	<i>Flag &amp; Sound</i>	<i>VHF</i>	<i>Example time race</i>
	'L' lowered, multiple short horn blasts		10:54
Warning	Class flag(s) raised; 1 horn blast	"5, 4, 3, 2, "	10:55
Preparatory	'P' raised; 1 horn blast	"Racers Prep"	10:56
One-minute	'P' lowered; 1 long horn blast	"5, 4, 3, 2, "	10:59
Starting	Class flag(s) lowered; 1 sound, <b>next class flag raised</b>	"5, 4, 3, 2, all clear"	11:00
Preparatory	'P' raised; 1 horn blast	"Cruiser Prep"	11:01
One-Minute	'P' lowered; 1 long horn blast	"5, 4, 3, 2, all clear"	11:04
Starting	Class flag lowered, 1 sound*	"5, 4, 3, 2, all clear"	11:05

\* sound may be a horn blast or cannon fire

A boat must pass across the line between the committee boat's mast and the starting mark (inflatable mark or fixed mark such as HHS A) heading in the direction of the first mark of the course, as soon after the starting signal as possible.

Similarly at the finish, a boat must cross the line between the committee boat's mast and the finishing mark in the direction from the preceding mark of the course. The Race Committee will indicate a finish with a sound signal (horn or cannon).



## ***Basic Right Of Way Rules***

On opposite tacks, a boat on port tack (boom on starboard side of boat centerline) shall keep clear of a boat on starboard tack (boom on port side of boat centerline). It doesn't matter which side any head sail is on.

Note, the boats may not be sailing in the same direction, i.e., a port tack boat sailing upwind must yield to a starboard tack boat sailing downwind, and vice versa.

Note, downwind it is very easy to change tacks by simply switching the main from one side to the other.

On the same tack, overlapped (any portion of the following boat ahead of an imaginary line perpendicular to the leading boat's transom), the boat to windward shall keep clear of the leeward boat:

Sailing downwind, leeward is defined as the side the boom is on, so two boats sailing dead downwind with booms on their port side (both on starboard tack), the boat to port would be the leeward boat and the boat to starboard must keep clear. Overlaps are often hard to judge. If there is doubt, assume one exists.

On the same tack, not overlapped, the boat clear astern shall keep clear of the boat clear ahead. Once an overlap is established then windward/leeward applies.

There is usually little to be gained sailing adjacent to another boat, so when given a choice, pass either three or more boats lengths to windward or leeward of another boat.

Always allow the give way boat room and time to respond. Hail the give way boat to give way.

Avoid collisions regardless of who has right-of-way.

Be especially careful at the start and rounding marks as this is where there are typically several boats sailing in close proximity.

All participants, racers and cruisers, are encouraged to fly the HHSA burgee, so that participants can be readily identified on the course.



### 3 Appendix B - SPECIAL INSTRUCTIONS FOR A RABBIT START

1. In the absence of an on-station Race Committee, the following replaces sections of the Sailing Instructions.
2. If the “Rabbit” has not been designated prior to the race, the “Rabbit” shall be a boat chosen among boats which are present at the rendezvous location. The "Rabbit" shall display the HSA burgee on its backstay for identification.
3. There will be only one start for all boats, and it will be a “Rabbit Start”. The Rabbit Start is used to start a race to Windward in the absence of a Committee Boat. The Rabbit shall announce the course (Long or Short) for each class, and each class will be scored separately. The Rabbit shall serve as the check in boat and signal boat. All signals will be horn and/or radio. No visual signals will be used.
4. At approximately the time published in the Sailing Instructions (SI’s) for the Warning Signal, the Rabbit will pass the starting mark on a starboard course. The Rabbit shall proceed a distance to allow returning to the starting mark and heading off close hauled on port tack at approximately the start time published in the SIs. All boats must leave the starting mark to port and pass behind the Rabbit on starboard tack in order to start, as described in more detail below. The Rabbit shall record the time her transom passes the starting mark as the official race start time.

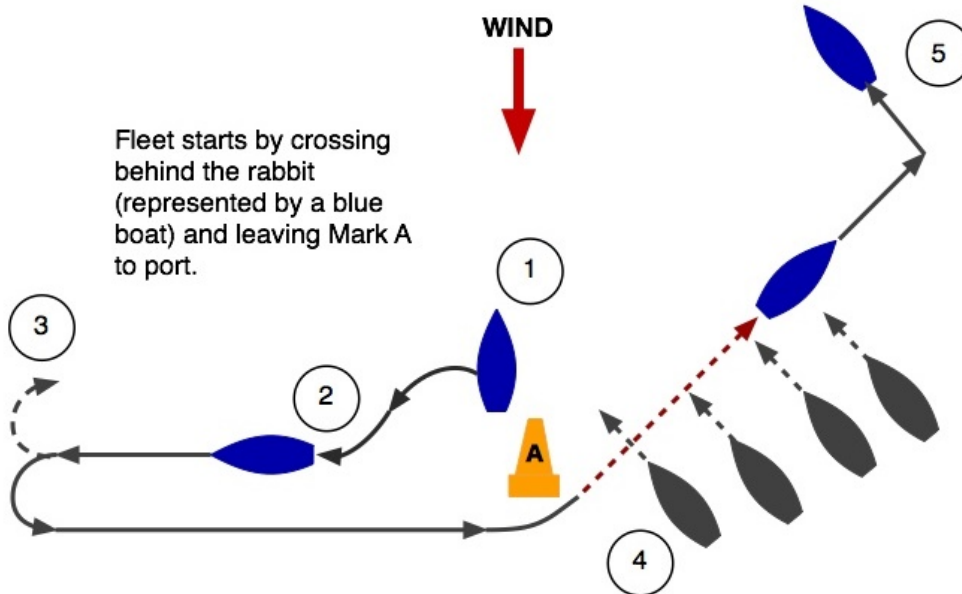
Position	Signal	Approx. Time	Sound	Rabbit’s Actions
1	Warning	Time as published in SI’s	1 sound	Pass in the immediate vicinity of the starting mark on a starboard tack beam reach which she maintains for about 2 minutes.
2		~+3 mins.		Tack or jibe; return to the starting mark on port tack beam reach
3	Start	~+5 mins.	1 sound	Pass the starting mark to port, sailing close hauled. Record the start time.
4	End of starting sequence	~+ 6 mins.		The Rabbit may tack to starboard at any time after all boats have crossed her stern, or after the Rabbit has crossed the bows of





				all boats, or any time later than 90 seconds after passing the starting mark.
--	--	--	--	---

5. The diagram below shows the sequence in a visual format



6. The starting line is the line between the port-end starting mark and the Rabbit's transom. A boat starts when it crosses the starting line while the Rabbit is on port tack. After starting, all boats shall remain on starboard tack until the Rabbit has tacked to starboard. A boat failing to start properly may do so by sailing to the approximate location the Rabbit tacked to starboard and make a turn – one tack and one gybe.
7. All times are approximate. The absence of a sound signal shall be disregarded. This modifies RRS 26.
8. Boats shall take their own finish times in accordance with HSA Racing Rules Section 8.B and 8.C and announce the time over VHF Channel 68 until acknowledged by the Rear Commodore (Racing) or another competitor. This modifies rule 8.B.
9. Finishing boats shall stay in the vicinity of the finish line until the boat behind them has finished and announced a finish time. The last boat to finish shall disregard this requirement.