



## 11 HHSA Frostbite Series (6 Races)

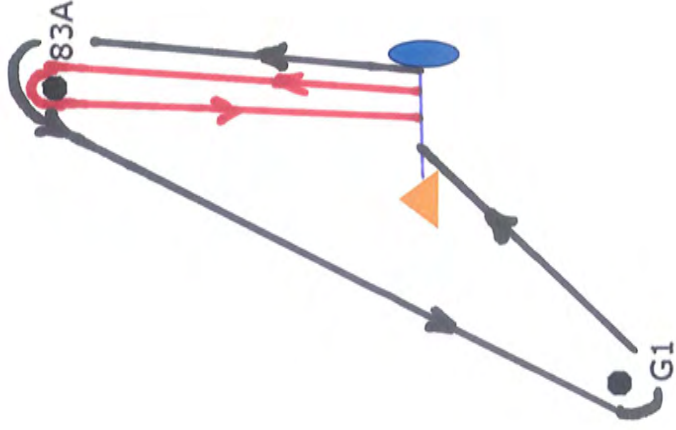
Dates	Nov 5, Nov 12, Nov 19, Nov 26, Dec 3, Dec 10															
Approx. Times for 1 <sup>st</sup> Race	<table border="1"> <thead> <tr> <th><i>Signal</i></th> <th><i>Sound</i></th> <th><i>All Boats</i></th> </tr> </thead> <tbody> <tr> <td>Warning</td> <td>(●)</td> <td>1155</td> </tr> <tr> <td>Preparatory</td> <td>(●)</td> <td>1156</td> </tr> <tr> <td>One-minute</td> <td>(—)</td> <td>1159</td> </tr> <tr> <td>Start</td> <td>(●)</td> <td>1200</td> </tr> </tbody> </table> <p>The table shows the approximate times for the first race. Multiple races may be sailed. The starting sequence for subsequent races will begin as soon as practical after all boats have finished the previous race. The class flag shall be a “5” Flag.</p>	<i>Signal</i>	<i>Sound</i>	<i>All Boats</i>	Warning	(●)	1155	Preparatory	(●)	1156	One-minute	(—)	1159	Start	(●)	1200
<i>Signal</i>	<i>Sound</i>	<i>All Boats</i>														
Warning	(●)	1155														
Preparatory	(●)	1156														
One-minute	(—)	1159														
Start	(●)	1200														
Skippers’ Meeting	None. Preregistration on <a href="http://www.hhsa.org">www.hhsa.org</a> is recommended.															
Rendezvous	Race Committee at HHSA A or its vicinity at approx. 1130															
Start	Between Committee Boat and drop mark or other nearby mark															
Finish	Between Committee Boat and nearby mark															
Course	The Race Committee shall select Course A, B or C, Long or Short, from the amended sailing instructions (attached) that will allow for races to be completed in approximately 1 hour. The selected course will be indicated by sign boards displayed on the Committee Boat.															
Time Qualifications	In order for the first race to qualify, the lead boat in must finish within 90 minutes after the starting signal, and each boat must finish within 45 minutes of the first boat or be scored as TLE. There is no time limit for subsequent races. No race will be started after 1430.  The Race Committee will announce TLE for boats still on the course on VHF Channel 68. This modifies RRS 35.															
Protests	The protest time limit is 2 hours after racing has concluded for the day.															
Awards	Does not count towards the season High Point, but does count for Commodore’s Cup. Awards given out for the Series. See HHSA Racing Rules for details.															



## HHSA Sailing Instructions 2017 - Frostbite Amendment

Special Instructions	<p>Races are for non-spinnaker boats. Double headsails are not permitted. Whisker poles are not permitted. After a boat has started, crew members wearing PFD's are <b>only</b> allowed out of the cockpit during a tack or a gybe to assist moving the headsail around the mast and standing rigging and skirt the headsail. Sitting on the rail is not permitted unless when doing so, feet are in the cockpit. Headsail changes after a boat has started are not permitted. Reefing or un-reefing the mainsail after a boat has started is not permitted. Rolling/unrolling a roller furling headsail is permitted.</p> <p>At the discretion of the Race Committee, racing <b>may not</b> be conducted if there is heavy ice in either of the marinas or if the true wind speed is over 20 knots. The RC is encouraged to announce cancellations in advance on VHF Channel 68.</p> <p>Participating boats shall comply with PHRF of the Chesapeake Category 4 Special Safety Regulations.</p>								
Social	An informal gathering at a local restaurant after the race.								
Scoring	<p>Scoring shall be per the HHSA Racing Rules, Section 17 Scoring, except that Part F. is revised as follows:</p> <p>F. For the series, the number of races scored will be dependent on the number of completed races in the series, as described in the following table:</p> <table border="1" data-bbox="451 1129 1406 1289"><thead><tr><th>Number of Races Completed</th><th>Throw Outs</th></tr></thead><tbody><tr><td>8 – 14</td><td>2</td></tr><tr><td>5 - 7</td><td>1</td></tr><tr><td>&lt; 5</td><td>0</td></tr></tbody></table> <p>And, a boat that did not start, did not finish, retired after finishing, was TLE, did not come to the starting area, or was disqualified shall be scored points for the finish place one more than the number of boats that finished. This changes RRS A 4.2, RRS A 9, HHSA Rule 18.C.4 and HHSA Rule 18.C.5.</p>	Number of Races Completed	Throw Outs	8 – 14	2	5 - 7	1	< 5	0
Number of Races Completed	Throw Outs								
8 – 14	2								
5 - 7	1								
< 5	0								

# Course A – North Wind



Short Course:

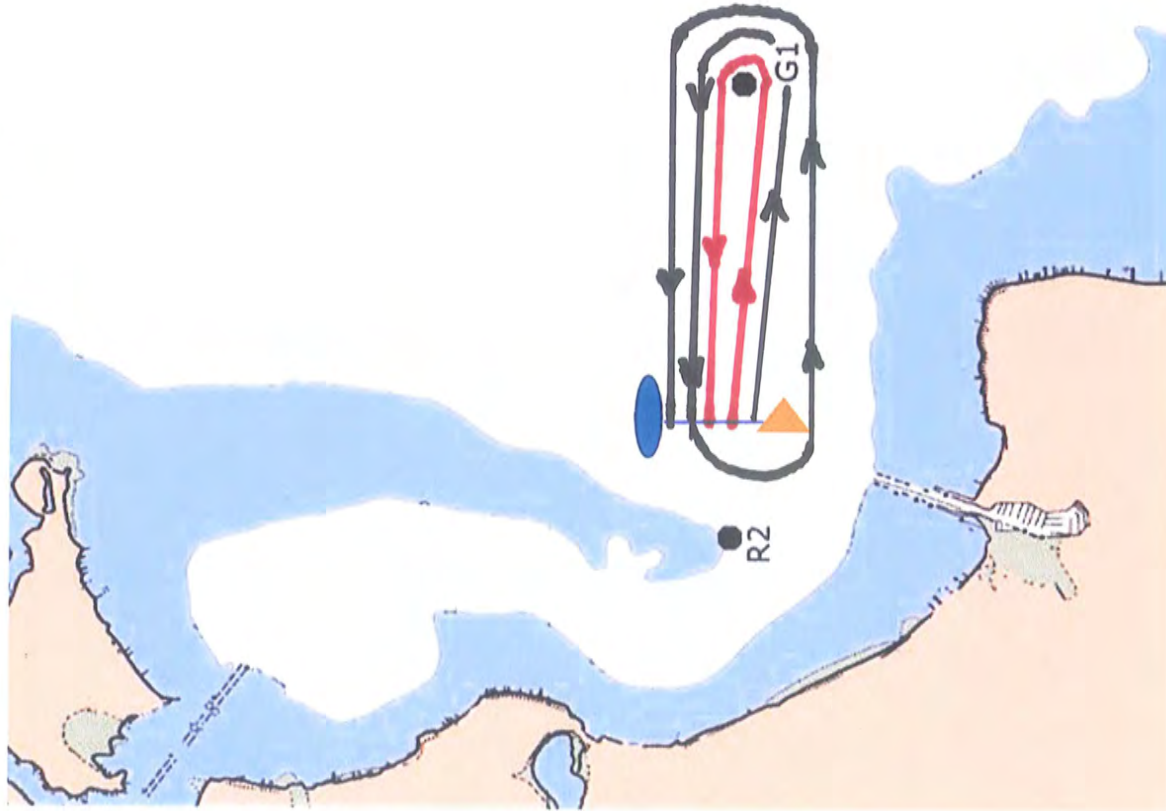
Start -> 83A -> Finish

Long Course:

Start -> 83A -> G1 -> Finish

**Note:** All rounding marks to Port, finish between RC and inflatable mark.

# Course B – East Wind and West Wind



● 83A

Short Course:

Start -> G1 -> Finish

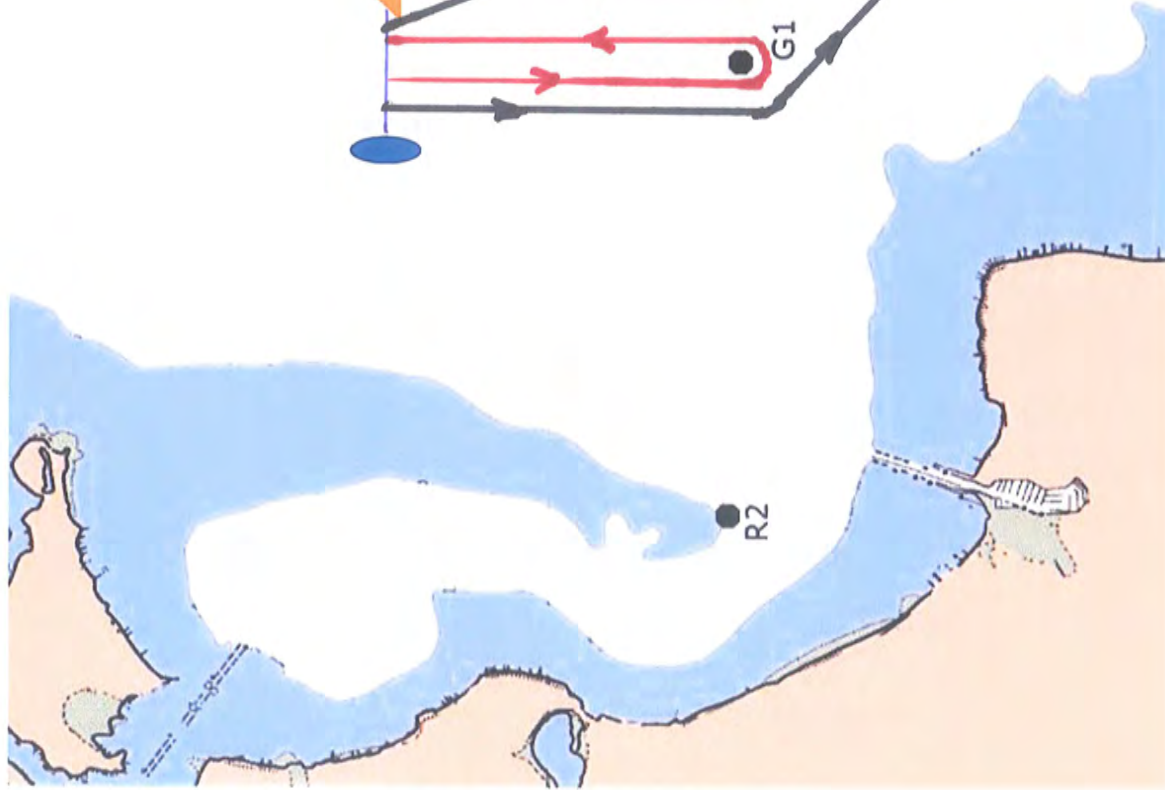
Long Course:

Start -> G1 -> Start -> G1 -> Finish

**Note:** All marks to Port.

● 81A

# Course C – South Wind



● 83A

Short Course:

Start -> G1 -> Finish

Long Course:

Start -> G1 -> 81A -> Finish

**Note:** Finish between RC and inflatable mark. For Long Course pass or round G1 to Port and round 81A to Port.