

**MARION NARROWS CHARTLET – 01 November 2017**

THE DEPTHS SHOWN WITHIN THE BLACK BOXES AND THE COURSE (SHOWN AS A DOTTED RED LINE) DO NOT FORM PART OF A NAUTICAL CHART.

DEPTHS SHOWN ARE IN METRES AT CHART DATUM REDUCED USING HOBART TIDE TABLES.

THIS INFORMATION HAS BEEN OVERLAID ONTO THE CHART BY MARINE AND SAFETY TASMANIA TO PROVIDE GUIDANCE TO MARINERS ABOUT THE SHIFTING CHANNEL AT MARION NARROWS.

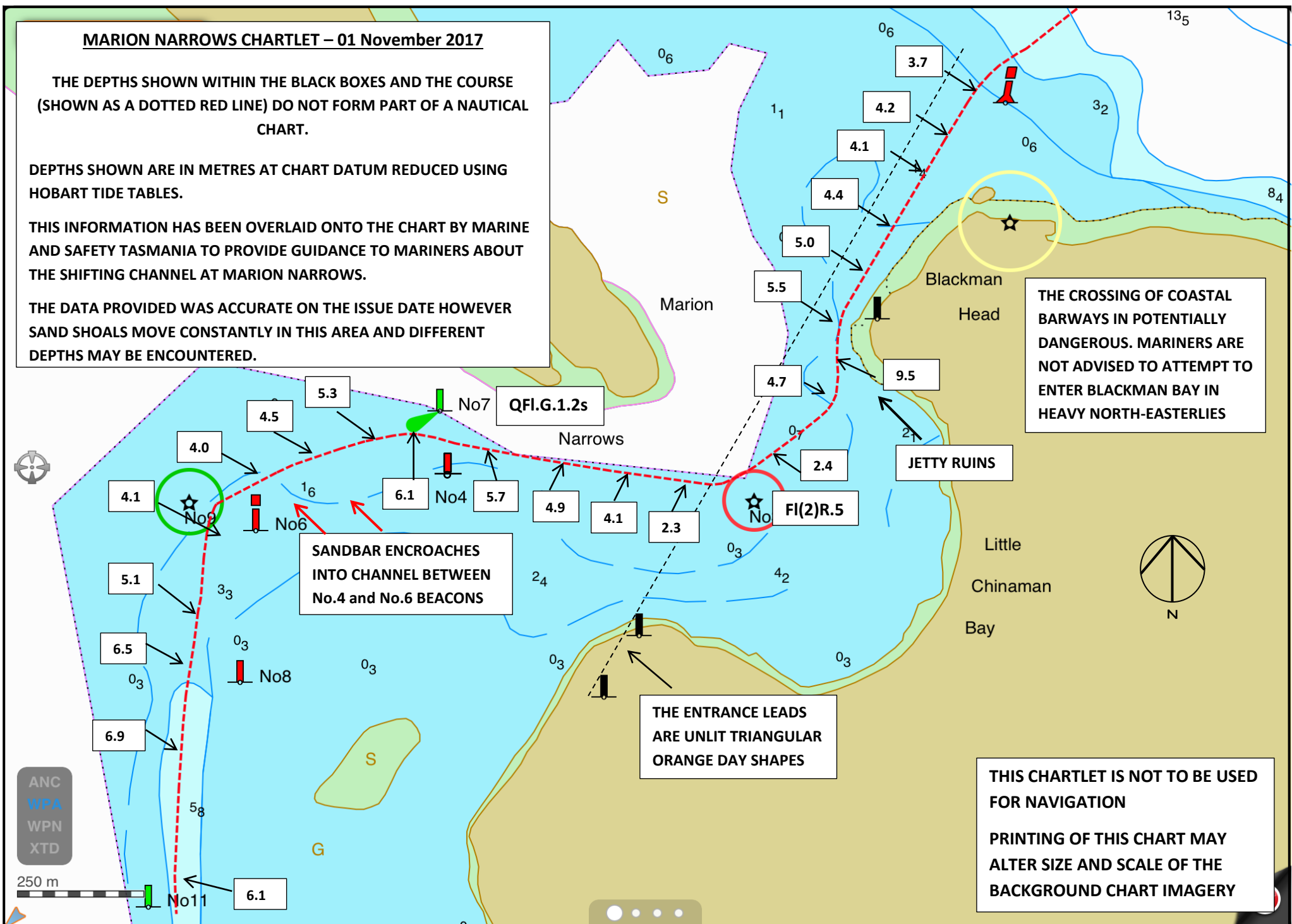
THE DATA PROVIDED WAS ACCURATE ON THE ISSUE DATE HOWEVER SAND SHOALS MOVE CONSTANTLY IN THIS AREA AND DIFFERENT DEPTHS MAY BE ENCOUNTERED.

THE CROSSING OF COASTAL BARWAYS IN POTENTIALLY DANGEROUS. MARINERS ARE NOT ADVISED TO ATTEMPT TO ENTER BLACKMAN BAY IN HEAVY NORTH-EASTERLIES

SANDBAR ENCROACHES INTO CHANNEL BETWEEN No.4 and No.6 BEACONS

THE ENTRANCE LEADS ARE UNLIT TRIANGULAR ORANGE DAY SHAPES

THIS CHARTLET IS NOT TO BE USED FOR NAVIGATION  
PRINTING OF THIS CHART MAY ALTER SIZE AND SCALE OF THE BACKGROUND CHART IMAGERY



ANC  
WPA  
WPN  
XTD

