



***WAVE & Village to Village Network:  
A Working Relationship***

***Judy Willett, National Director***

**&**

***Candace Baldwin, Dir.,  
Center for Long Term Supports Innovation***



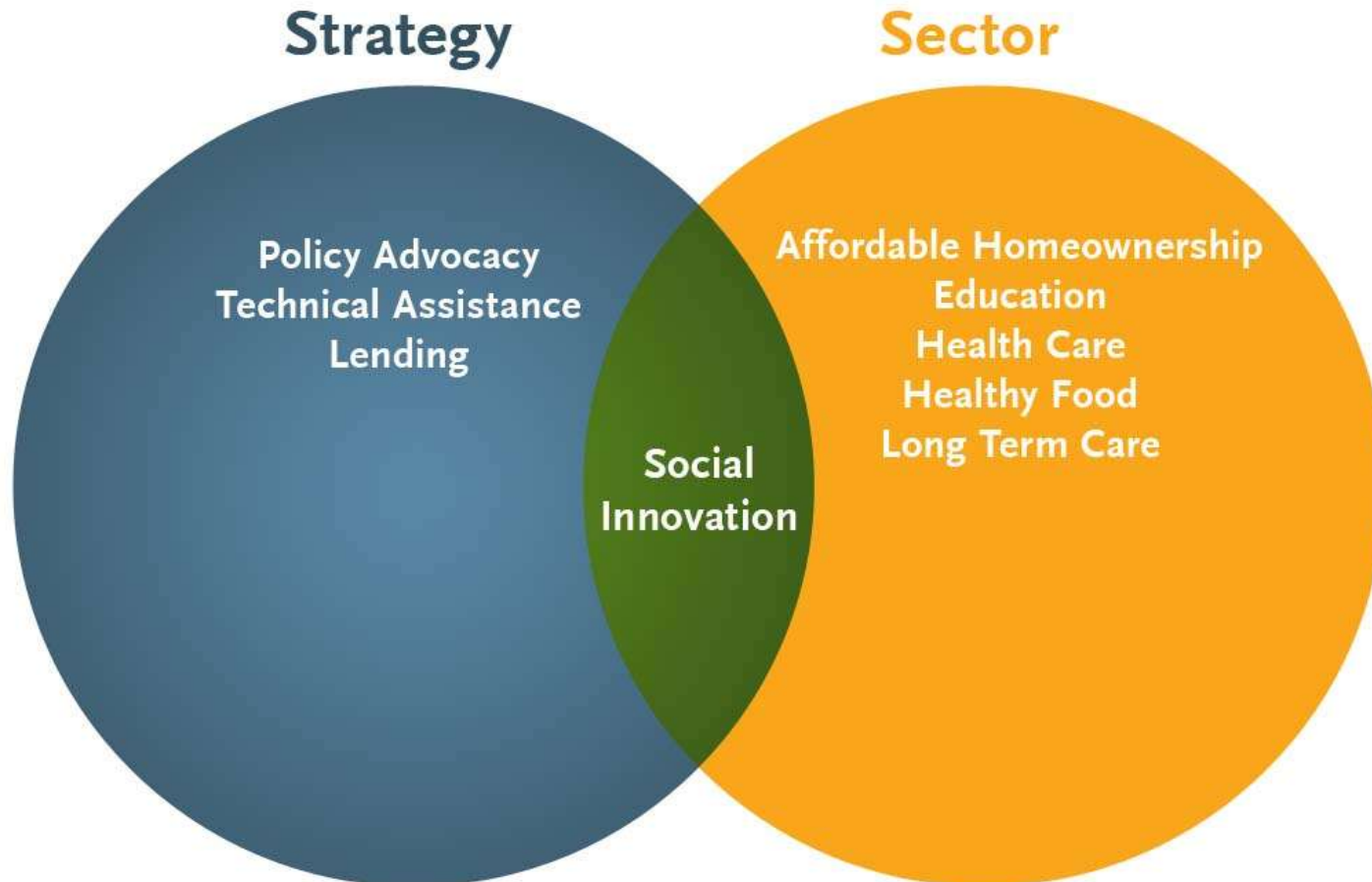
# Overview for Today

---

- NCB Capital Impact and Beacon Hill Village
- Brief History of the VtV Network
- VtV Member Benefits for Villages
- VtV and WAVE: Working together
- Open Discussion

# NCB Capital Impact – Focus on Healthy Communities

*NCB Capital Impact helps people and communities reach their highest potential at every stage of life.*





# Center for Long Term Support Innovations: Connecting Policy with Real World Practices

---

- Mission to help older Americans and people with disabilities to conduct their lives with maximum independence, dignity and connection to their communities
- Provide innovative, expert technical assistance to community-based organizations working in underserved and moderate- and low-income communities
- Develop models to fosters community ownership and meets consumer preference to maintain independence



# Livable Communities Leverage and Create Linkages

Element	Features
Basic Needs -- Safe, Accessible, and Affordable	<ul style="list-style-type: none"><li>■ Accessible and affordable housing and community areas</li><li>■ Provides information about services</li><li>■ Fosters safety</li></ul>
Community Engagement	<ul style="list-style-type: none"><li>■ Fosters meaningful connections</li><li>■ Promotes active community engagement</li><li>■ Opportunities for paid or volunteer work</li></ul>
Health and Well Being	<ul style="list-style-type: none"><li>■ Facilitates access to medical and social services</li><li>■ Promotes health behaviors</li><li>■ Supports community activities that enhance well being</li></ul>
Independence and Autonomy	<ul style="list-style-type: none"><li>■ Mobilizes in-home supports and services</li><li>■ Coordinates or offers transportation</li><li>■ Supports family and other caregivers</li></ul>



# Track Record Taking Innovative Models to Scale

---

- Coming Home Program
  - Robert Wood Johnson Foundation Coming Home Program
  - Worked with 9 states to create new systems for affordable assisted living – policy, financing and advocacy
- Greenhouse Replication Initiative
  - Funded by Robert Wood Johnson Foundation
  - Culture Change in skilled nursing – design, staffing and person centered approach
  - Replication/Scaling – policy, training, systems change, advocacy

# ***Village to Village Network***

For Villages \* By Villages



# Peer to Peer Network - Response to Growing Need

---

- Inquiries to Beacon Hill Village
- Eighty-nine currently operating, hundreds more seeking information
- Commonality of information requests:
  - Getting Started
  - Fundraising/Marketing/Outreach
  - Sustaining operation
  - Technology
  - Vetted, discounted providers





# VtV Network Fully Launched January 2010

---

- Partnership formalized between Beacon Hill Village and NCB Capital Impact
- VtV Network website

**[www.vtvnetwork.org](http://www.vtvnetwork.org)**

- Current membership - 200 organizations from across the country

**www.vtvNETWORK.org**



# Village to Village Mission

---

## ***VtV Network is an organization by Villages for Villages***

- National peer to peer network
- Help communities establish and continuously improve management of their own Villages
- Mission:
  - To enable communities to establish, and effectively manage, aging in community organizations initiated and inspired by their members.



# VtV Network Focus on National Village Replication

---

- VtV Network:
  - Promotes Village model as a community approach to aging for replication
  - Assists new, emerging and established Villages to create sustainable organizations
  - Gathers feedback how the benefits and programs can be revised to meet needs of individual Villages
  - Conducts research and evaluates impact of Villages on a number of social and health factors



# Villages Benefit from Peer to Peer Network

---

- **Peer to Peer Network:**
  - Forums
  - Document Library
  - Funding resources
  - News and Updates on Villages
  - Searchable US map
  - Monthly Webinars
  - Discounted, custom website to manage membership and service requests to efficiently operate a Village

# Overview of 2011

---

- 172 VTVN member organizations across the country
  - 36% open, 47% in development
  - 37% urban, 37% suburban, 11% rural
- Established the VtV Network Advisory Committee
- 51,904 unique visitors to the website
- 54% new visitors
- Visitors to site represented 89 countries

# Overview of 2011

---

- Average of 4 webinars/month with 15-20 participants each
- 25 Villages using customized website platform as main organization portal

# Overview of 2011

---

- Third National Village Gathering – Oct. 15-17 in Atlanta, GA
- Media Coverage-190 Million media impressions
  - USA Today
  - Chicago Tribune
  - US News and World Report
  - National Association of Realtors
  - AARP Magazine

# Now & In the Future

---

- Developing vetted, discounted provider relationships
- Creating new tools and resources for developing and open Villages.
- VtV Network Advisory Committee
- Support Regional Village Peer Coalitions
- Conduct and support research to demonstrate sustainability of Villages
- Identify ways to be “at the table” with federal, state and local governments.





# How VtV Network can support WAVE

---

- Help to promote local peer to peer exchange
  - Set up a WAVE forum for creating and searching threads of conversations
  - Create custom page on private side of VtV site
  - Host the WAVE website
- Educate other Villages and the public about how to create and run a regional Village group
  - Create a custom page a public side of the VtV site
- VtV gives WAVE a platform for leading the development of regional Village groups



# Open Discussion

---

[www.vtvNETWORK.org](http://www.vtvNETWORK.org)



# For More Information

---

*Visit:*

[www.vtvnetwork.org](http://www.vtvnetwork.org)

Contact

[vtv@vtvnetwork.org](mailto:vtv@vtvnetwork.org)

617-299-9NET