

# Chainwheel Chatter

Volume 45 Issue 10

Established 1972

October 2017

MEETING	DATE/TIME	LOCATION	PRESENTER/ TOPIC
<b>Board Meeting</b>	October 3 7:00 p.m.	Foster Community Center 200 N. Foster St. Lansing, MI	Members are welcome to attend all board meetings to express their concerns. Due to time constraints, if you have a specific item to be brought before the board, please contact the President one week prior to the meeting and ask for add'l agenda item.
<b>Membership Meeting</b>	October 26 November 30 7:00 p.m.	Foster Community Center, 200 N. Foster St. Lansing, MI	Member meeting is the last Thursday of the month. <b>October:</b> Open microphone night <b>November:</b> Speaker: Randy Oleynik. He and his daughter rode high wheel bikes across the country in 2016.
<b>TCBA Advocacy Committee</b>	October 11 6:30 8:00 p.m.	Law Offices of Glassen, Rhead, McLean, Campbell & Schumacher 533 South Grand Ave. Lansing, MI	2nd Wednesday of the month Everyone is welcome to attend! <a href="http://advocacy.biketcba.org">http://advocacy.biketcba.org</a>

## Chainwheel Deadlines

### NEWSLETTER October 11

Please send items to Patricia Mead, via e-mail, [chainwheelchatter@biketcba.org](mailto:chainwheelchatter@biketcba.org) by the indicated deadline.

### RIDE CALENDAR

Go to: [biketcba.org](http://biketcba.org), Event Calendar  
To have a ride listed on the Event Calendar send email to:  
[Ridecoordinator@biketcba.org](mailto:Ridecoordinator@biketcba.org)

## TCBA Holiday Party 2017

The annual party will be held at Peacock Road Tree Farm, 11854 Peacock Road, Laingsburg, MI 48848, on December 7th.

The social hour will be from 6:00 to 7:00 with appetizers served.. Included will be bean soup, vegetables and dip, and cheese and crackers. A holiday punch will be served. There will not be a cash bar. Dinner will include pulled pork, BBQ chicken, sweet potatoes, au gratin potatoes, coleslaw, mixed vegetables, cornbread, and cranberry sauce. Quiche will be served for those wishing a vegetarian meal. Dress down a bit because our party will be on a farm. There will be a bonfire and you may wander about the grounds.

The cost is \$10 for club members. You may sign up at the September, October, or November club meetings; online or by calling Bill Smith at 517-648-0019. Please RSVP by November 30th. See you there!



**Tri-County Bicycle Association**  
P.O. Box 22146  
Lansing, MI 48909-2146  
(517) 882-3700  
[www.biketcba.org](http://www.biketcba.org)

Meetings/Deadlines	
Announcements	Front Cover
TCBA Calendar / Events	2
DALMAC® Volunteers	2
Sunrise / Sunset	2
Ride with GPS	2
Advocacy Report	2
Incentive Sale	2
Board Meeting Minutes	3
Eaton County Sheriff's Report	3
Governor's Highway Safety	4
Classified/Member Specials	5-6
Chainlinks	5
TCBA Contacts	7
Ride Classifications	7
Membership Information	
	Back Cover



## DALMAC® Volunteers Needed

DALMAC®~ Volunteer Positions are available:

- Volunteer Coordinator - transition helper  
 Coordinate all of the volunteers to ensure readiness of all aspects of DALMAC®
- Purchasing Committee  
 Help to make selections for T-shirts, hats, sweatshirts, jerseys, and other swag for DALMAC®

Send a note to [volunteer@dalmac.org](mailto:volunteer@dalmac.org) if you would like further info on these opportunities...

## 2017 / 2018 TCBA Calendar / Events

Month	Board Meeting	Member Meeting
October	3	26
November	6	30
December	5	Holiday Party
January 2018	2	25
February 2018	6	22

## Oct. 2017 Sunrise / Sunset

Sunday	Monday	Tuesday	Wednesday	Thursday	Friday	Saturday
1 Sunrise: 7:35am Sunset: 7:21pm	2 Sunrise: 7:36am Sunset: 7:19pm	3 Sunrise: 7:37am Sunset: 7:17pm	4 Sunrise: 7:39am Sunset: 7:16pm	5 Sunrise: 7:40am Sunset: 7:14pm	6 Sunrise: 7:41am Sunset: 7:12pm	7 Sunrise: 7:42am Sunset: 7:10pm
8 Sunrise: 7:43am Sunset: 7:09pm	9 Sunrise: 7:44am Sunset: 7:07pm	10 Sunrise: 7:45am Sunset: 7:05pm	11 Sunrise: 7:46am Sunset: 7:04pm	12 Sunrise: 7:48am Sunset: 7:02pm	13 Sunrise: 7:49am Sunset: 7:00pm	14 Sunrise: 7:50am Sunset: 6:59pm
15 Sunrise: 7:51am Sunset: 6:57pm	16 Sunrise: 7:52am Sunset: 6:55pm	17 Sunrise: 7:54am Sunset: 6:54pm	18 Sunrise: 7:55am Sunset: 6:52pm	19 Sunrise: 7:56am Sunset: 6:51pm	20 Sunrise: 7:57am Sunset: 6:49pm	21 Sunrise: 7:58am Sunset: 6:47pm
22 Sunrise: 8:00am Sunset: 6:46pm	23 Sunrise: 8:01am Sunset: 6:44pm	24 Sunrise: 8:02am Sunset: 6:43pm	25 Sunrise: 8:03am Sunset: 6:41pm	26 Sunrise: 8:04am Sunset: 6:40pm	27 Sunrise: 8:06am Sunset: 6:39pm	28 Sunrise: 8:07am Sunset: 6:37pm
29 Sunrise: 8:08am Sunset: 6:36pm	30 Sunrise: 8:09am Sunset: 6:34pm	31 Sunrise: 8:11am Sunset: 6:33pm				

Daylight Saving/Summer Time is in effect for the entire month.  
 Courtesy of [www.SunriseSunset.com](http://www.SunriseSunset.com) Copyright © 2017 Steve Edwards. All rights reserved

## August 2017 Advocacy Committee Report, by Michael Unsworth

**Business I-69 Corridor** (Clinton & Ingham Counties)  
 At a July 31 presentation to Bath Township trustees, the Michigan Dept. of Transportation revealed a preliminary plan for getting non-motorized traffic through the Marsh Road & Business 69 intersection: an awkward but workable "Z" pattern crossing for pedestrians and bicyclists. They stressed that they are a long way off from a final plan.

MDOT also proposes to eliminate the median cross overs of Business 69 at Towner & Newton Roads. TCBA is starting an effort to change the MDOT planners' minds on this unsatisfactory design.

**Ingham County Trails Millage diversion**  
 The diversion of one-third of millage

funds proposed by the County Parks Commission was nixed by the County Comptroller and ratified by the County Services Committee at its August 24 meeting. The "East Lansing Info" site had a Aug. 16 article on the issue: <http://eastlansinginfo.org/content/trail-repairs-delayed-bicyclists-question-proposed-use-millage-funds>

The TCBA Advocacy Committee (<http://advocacy.biketcba.org/>) meets the second Wednesday of each month at Law Offices of Glassen, Rhead, McLean, Campbell & Schumacher (533 South Grand Avenue, Lansing) from 6:30 to 8:00 p.m. Everyone is welcome to attend.

## Ride with GPS by Dave Mansfield

TCBA has a RideWithGPS Club Account. With the Club Account all TCBA members have the advantages of a premium account for rides in the Club Account. Some advantages are:

A rider can define how far in advance to be notified of a turn.

- Spoken turn by turn direction on Android and iPhones.
- Ability to send files directly to a Garmin GPS
- Print custom maps and cue sheets. Handy, even if you don't use a GPS or smartphone.

A video of the benefits are at <http://ridewithgps.com/help/club-benefits/>.

I'm including rides that are not TCBA but I think members may enjoy.

All annual club rides will have the year in the name. For this year it will have 2017 or 17. If you see a ride with last year in the name like "T-SHIRT 2016 100K" that is last year's route. The route may not be the same for this year. When the maps are sent to the printer the GPS files will be updated to this year. That way if you have this year's file it will have any last minute changes made to the paper map. If at registration you are informed of map changes you can download a new copy or use the changes give out at registration.

If you would like to join the Club Account go to <http://ridewithgps.com/clubs/108-tri-county-bicycle-association> and click on "Apply to join". If you don't already have a RideWithGPS account go to <http://ridewithgps.com> and sign up for a free membership and then join the Club Account. If you are using a nickname or anything other than your name for RideWithGPS please send an email to [routesandmaps@biketcba.org](mailto:routesandmaps@biketcba.org) with your name and the name you are using for RideWithGPS so I can verify your club membership and approve your request. ([routesandmaps@biketcba.org](mailto:routesandmaps@biketcba.org))

If you are a ride leader and would like me to put your rides in the Club Account send an email and I will be glad to enter them. I can work from a map, cue sheet or whatever is the easiest way for you to get me the information on your ride.

## 2016 Incentives for Sale

The Club's 2016 Ride Incentive award consisted of a 2017 short sleeved club bicycle jersey (red and yellow coloring) and a re-chargeable rear tail light.

Thinking that some members who were not eligible for the ride incentives might also want a jersey or light, we ordered a few additional of each to sell. There remain 1 medium, 2 large and 4 extra large Men's jerseys and 2 medium, 3 large and 1 extra, extra large Women's jerseys for sale.

The cost per jersey is \$45. While they last, we also have tail lights for sale at \$20 each. Those interested in either a jersey or light should contact Bob Noble [atbobnob@comcast.net](mailto:atbobnob@comcast.net).

President Patrick Kelley called the meeting to order at 6:35 PM. **Present:** Patrick Kelley, Bill Smith, Deb Traxinger, Joel Wickham, and Bob Noble. **Absent:** Steve Leiby and Ken Schwartz. The meeting agenda and August board minutes were approved.

**Correspondence received:** none

**Member Input:** none

### Board Reports

**President:** Patrick Kelley

TCBA Mission Statement - The club has had a mission statement: "Promoting safe, social bicycling since 1972."

Ride of Remembrance – a suggestion was made to do a "Remembrance" at the club picnic in 2018. Bill Smith will look into a way to do this.

The November board meeting will be moved to Monday, November 6.

**Vice President:** Bill Smith – Bill continues to work on the Christmas party. The October membership meeting will be open mic.

**Secretary:** Deb Traxinger – no report

**Treasurer:** Steve Leiby - The financial report will be reviewed at the next meeting.

**Events Director:** Joel Wickham - another successful DALMAC is in the books. A brief summary of the tour was given.

**At Large Directors:** Ken Schwartz and Bob Noble - Suggestions for 2017 ride incentives are welcome.

**Northwest Tour** (Jeff Dillingham) – no report

**T-Shirt Ride** (Bob Noble) – all 2017 volunteers are confirmed for 2018. There will be a ride in 2018 as long as a venue can be found.

**DALMAC Fund** – Steve Leiby – no report

**Advocacy Committee:** Mike Unsworth submitted his report by email.

**New Business:** none

**Old Business:** Gran Fondo – tabled

**Meeting Adjourned:** 8:16 PM

Respectfully submitted by Deb Traxinger, Secretary TCBA Board of Directors.

## Eaton County Sheriff's Report by Tom Reich, Eaton County Sheriff

Eaton County Sheriff's Report Tom Reich, Eaton County Sheriff (used by permission) Submitted by Ken Hendrick  
Appeared in the Sunday, September 3, 2017 edition of Grand Ledge Independent

As responsible drivers we all know we share the road with not only other vehicles, but also with those riding motorcycles, scooters, bicycles, etc. Even though we all watch out for each other, accidents do happen.

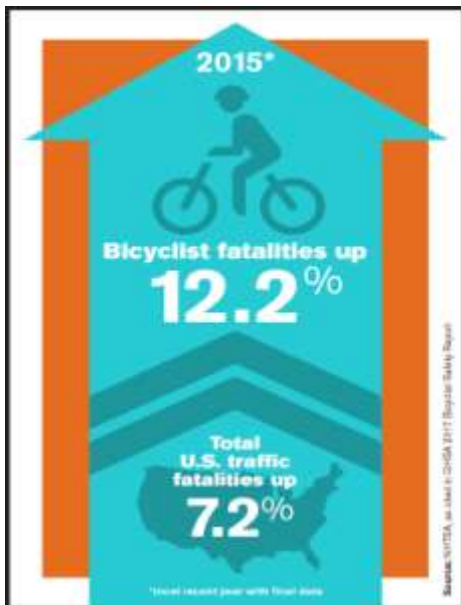
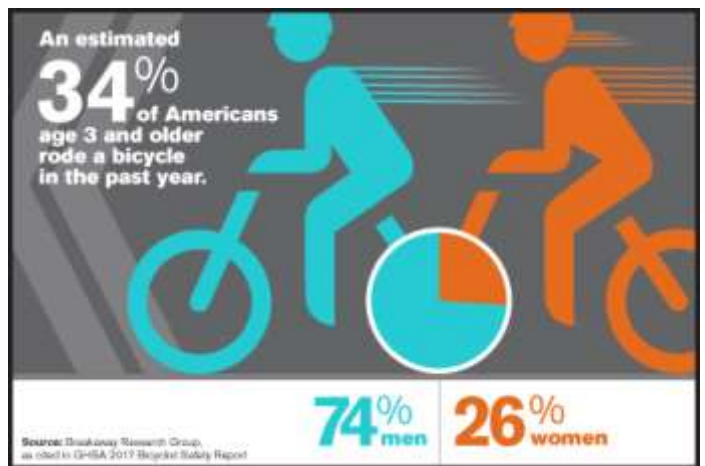
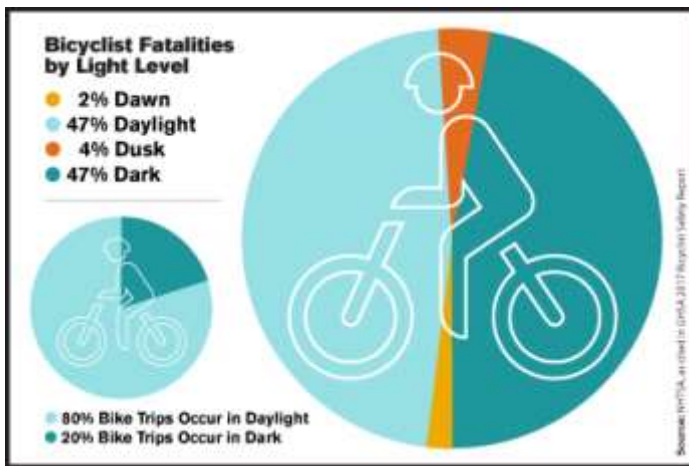
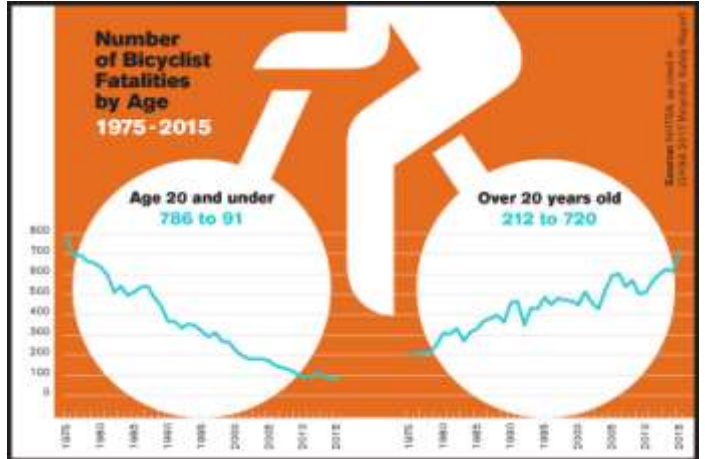
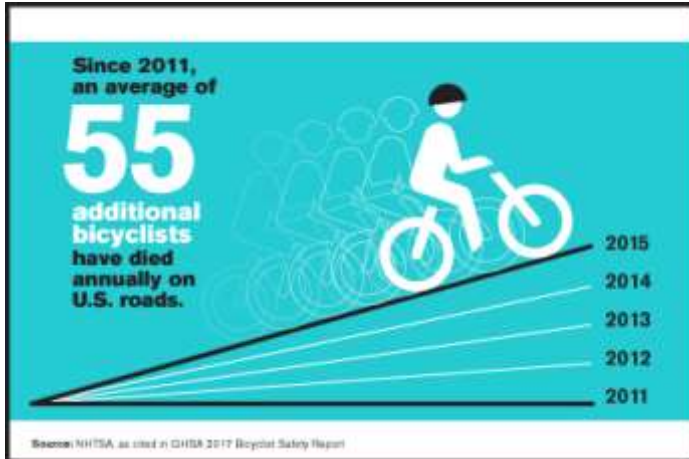
This time of year there are organizations conducting bike-a-thons and families out for an evening bike ride enjoying their time together. Please read the following 10 rules of the road for driving near bicyclists. This was published by Edmonds.com:

- ⇒ **Appreciate bicyclist vulnerability:** A car weighs two tons or so, while the average bike is a mere 20 pounds. In any collision between car and bike, the bike always loses.
- ⇒ **Know bicyclists' rights:** Drivers sometimes have little idea of the traffic laws that apply to bicyclists. Bicycles in the roadway are considered vehicles (editors note: in Michigan they are considered traffic). Cyclists 10 years and older should behave as though they were vehicles on the street, riding in the same direction as other traffic that's going their way and following the same traffic rules. Always look carefully for bicyclists before turning left or right, merging into bicycle lanes and opening doors next to moving traffic. Respect the right of way of bicyclists because they are entitled to share the road with you.
- ⇒ **Adjust that attitude:** Motorists tend to think of cyclists as "in their way," but they should think of them as equals, just as entitled to the roadway as drivers are. Drivers who get impatient with bicyclists might want to stoop for a moment and think about the human being on that bike. What if that rider was my friend, a friend of a friend, or a neighbor? Somehow, seeing bicyclists that way make people a little more patient.
- ⇒ **Consider the benefits of bicycling:** for Drivers: One cyclist on the road is one less car. Cyclists don't wear out the road.
- ⇒ **Spare them the right hook:** Intersections are venues for serious car-cycle collisions. Drivers making right turns, especially, should watch out for cyclists. A cyclist may be a little behind and to the right of your, and may be planning to ride straight ahead. If you don't signal your right turn, you could wind up hitting each other, with the point of contact somewhere on your car's right side. If you are trying to figure out if a nearby cyclist is planning to turn right, look for his raised left hand in a squared position, or an extended right hand.
- ⇒ **Beware the left turn:** A driver trying to make a left turn sees an oncoming bicyclist, but the driver figures he has plenty of time to complete the turn. Sometimes, that's not true. After a collision, a driver often says he didn't realize the cyclist was going that fast. Exercise the same caution you would for an approaching vehicle.
- ⇒ **Give cyclists three feet of clearance:** More than 20 states have passed laws requiring motorists to give bicycles on the roadway about 3 feet of space. Bike riders really appreciate that, and the 3-foot rule helps drivers by giving them a concrete frame of reference. It's also best for drivers to pass bicycles slowly and smoothly. The motorist's tendency is to speed up and get by the cyclists as quickly as possible. It's pretty unnerving when you are on a bike and a car accelerates. You can also spare cyclists' nerves by honking sparingly.
- ⇒ **Look around - but Not at Your Phone:** Drivers who have hit cyclists almost always say the same frightening thing: "I never saw him before I hit him." If drivers only expect other cars on the road, they are setting themselves up for dangerous interactions. Start looking out for everything, including other vehicles, cyclists, and pedestrians.
- ⇒ **Look before you exit your car:** Cyclists are terrified of being "doored." Imagine a rider pedaling along next to a row of parked cars. Suddenly, a driver flings her door open. The impact can send the cyclist flying, and riders have died when they've been thrown into traffic. Before you open the door, look out the side view mirror on the driver side and be sure no one is approaching.
- ⇒ **Bicyclists are here to stay:** Bicycling is on the rise. People are taking it up for exercise or to reduce commuting costs.



Editors note: These graphics are from the report: A Right to the Road: Understanding & Addressing Bicyclist Safety from Governor's Highway Safety Group releases Report on Importance of Bicyclist Safety

The Governors Highway Safety Association (GHSA) is a nonprofit association representing the highway safety offices of states, territories, the District of Columbia and Puerto Rico. GHSA provides leadership and representation for the states and territories to improve traffic safety, influence national policy, enhance program management and promote best practices. Its members are appointed by their Governors to administer federal and state highway safety funds and implement state highway safety plans. Contact GHSA at 202-789-0942 or visit [www.ghsa.org](http://www.ghsa.org). Find us on Facebook at [www.facebook.com/GHSAHQ](http://www.facebook.com/GHSAHQ) or follow us on Twitter @GHSAHQ.



The Chainwheel Chatter will provide additional information from this report in future editions. If you want to view the report in detail; please find it on the web at: <http://bikeleague.us13.list-manage2.com/track/click?u=eb89ca754070e189bcb1c9928&id=bea09bfc45&e=b250b4a6e6>

# CLASSIFIEDS

This section of the *Chainwheel Chatter* is published as a service for **TCBA MEMBERS ONLY**, to advertise cycling equipment free of charge. To place an ad, send an e-mail to [chainwheelchatter@biketcba.org](mailto:chainwheelchatter@biketcba.org) Ads will appear for 2 editions, unless otherwise notified.

**For Sale:** Rans Screamer tandem with fairing. \$2,200. Catrike \$950. Jim Walker 517-881-4008 (8/17)

**For Sale:** For Sale: 3-Person Tents - 1 Mountain HardWear and 1 Marmot - each for \$50. Dick Janson (517) 675-7340 (07/17)

**For Sale:** 2009 Trek 2.3, 54 CM frame, aluminum w/carbon stays and fork, Shimano Ultegra and 105 components. Very light weight, excellent condition, ~2,000 miles. Will make an excellent start-up tri bike, stiff and agile. \$2,500 originally, asking \$1850. Contact: Kevin Mead 517-285-7814 (texts welcome), kevinmead@sbcglobal.net



**For Sale:** custom made steel, Franklin road bike. Purchased in 2000. Has always had excellent care. Changed components in 2002 from campie to 105 Shimano. Triple chain rings 52/42/30 9 speed cassette 11/34, King head set, size 49 cm. Asking \$650. Call Jeaneen Reynolds at 517-881-5115. (8/17)



# MEMBER SPECIALS

This section of the Chainwheel Chatter is published as a service for TCBA MEMBERS who own a business at a cost of \$30.00/6 month for business card ad. To place your business ad, please submit your copy ready jpg business card to [chainwheelchatter@biketcba.org](mailto:chainwheelchatter@biketcba.org), and mail your payment in January and July for your ad to appear to: TCBA-Classifieds, P O Box 22146 Lansing, MI 48909-2146

**Sew Much More**  
Sewing Classes ages 8 to adults  
Custom Cycling Wear

Susan A. Schrock  
517-627-1412

1092 W. Colonial Park Dr.  
Grand Ledge, MI 48837  
e-mail: [sewmuchmorebiz@gmail.com](mailto:sewmuchmorebiz@gmail.com)  
web: [sewmuchmore.biz](http://sewmuchmore.biz)

**BRYAN WALDMAN**  
ATTORNEY AT LAW

(517) 394-7500  
3380 Pine Tree Rd.  
Lansing, MI 48911

bryan@bikelaw.com  
[www.bikelawmichigan.com](http://www.bikelawmichigan.com)

Exp. 10/17

**Michael A Wells**  
Insurance Counselor  
General & Recreational Insurance

Email: [mwells99@yahoo.com](mailto:mwells99@yahoo.com)

Off: (248) 625 3089  
Cell: (248) 981-9099

6481 Springfield  
Clarkston, MI 48346

**Glassen, Rhead, McLean,  
Campbell & Schumacher**

Kevin V.B. Schumacher  
Attorney at Law  
Bicycle Friendly Business, Real Estate, Litigation,  
Corporate & Bankruptcy Law  
533 South Grand Avenue  
Lansing, MI 48933  
(517) 482-3800  
(fax) 482-8253 [schumacher@glassenrhead.com](mailto:schumacher@glassenrhead.com)

In-House  
Bike  
Storage  
& Repair

**Hart  
house**  
Bed & Breakfast

www.harthousebedandbreakfast.com

Near the  
Hart-  
Montague  
Trailhead

**Cyclist-Friendly**

8/17

**CHAINLINKS**  
[www.biketcba.org](http://www.biketcba.org) Tri-County Bicycle Association

[www.lmb.org](http://www.lmb.org) League of Michigan Bicyclists

[www.bikeleague.com](http://www.bikeleague.com) League of American Bicyclists

[www.adventurecycling.org](http://www.adventurecycling.org) Adventure Cycling

[www.bikes.msu.edu](http://www.bikes.msu.edu) Michigan State University (MSU) Bikes

[www.walkbikelansing.com](http://www.walkbikelansing.com) Lansing's Walking and Bicycling Network

[www.capitalareasmartcommute.com](http://www.capitalareasmartcommute.com) Smart Commute Program

[www.midmeac.org](http://www.midmeac.org) Mid-Michigan Environmental Action Council

[www.bikems.org](http://www.bikems.org) Various rides throughout the country

[www.mmba.org](http://www.mmba.org) Michigan Mountain Biking Association

[www.railstotrails.org](http://www.railstotrails.org) Rails to Trails Conservancy

[www.michigantrails.org](http://www.michigantrails.org) Michigan Trails & Greenway Alliance

[www.facebook.com](http://www.facebook.com) TCBA is there as a group; check us out!

[twitter.com](https://twitter.com) Twitter

<http://www.nhtsa.gov/Bicycles> National Highway Traffic Safety Administration

<http://www.aabts.org/> Ann Arbor Bicycle Touring Society





## **SEP 2 ~ NOV 4**

### **TCBA MEMBERS**

#### ***Fall Color Tours on M-22 and The Heritage Trail***

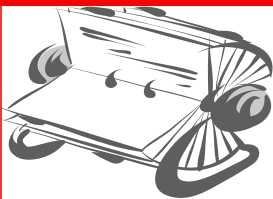
***Up to 8 TCBA Family Members in clean, comfortable Lake Shore Cabins on Little Glen Lake. \$950 weekly, \$150 daily, 50% Deposit. Central location 2 miles from the Dunes, Pierce Stocking Scenic Drive, Heritage Trail, Glen Arbor, Cherry Republic, Tennis & Basketball Courts, Boone Docks and Art's colorful Tavern.***



**BIRCH SHORES**  
Reservations  
Greg Nicolaou  
8822 Manhatten N  
Traverse City MI 49685  
(231) 835-0329

[gnicolaou200@gmail.com](mailto:gnicolaou200@gmail.com)

## TCBA MEMBER CONTACT



**Your respect is requested when using any of the numbers on this page. Phone calls during family time and at late hours can be intrusive.**

**TCBA OFFICERS:**

**President:** Patrick Kelley (517) 242-6940  
 email: president@biketcba.org

**Vice President:** Bill Smith  
 email: vp@biketcba.org  
 or smith132@comcast.net

**Treasurer:** Steve Leiby... (517) 881-4137  
 email treasurer@biketcba.org

**Secretary:** Deb Traxinger  
 email secretary@biketcba.org

**Events Director:** Joel Wickham  
 DALMAC® Hotline (517) 882-3700  
 email eventsdirector@biketcba.org

**Board at Large:**  
 Bob Noble (517) 925-8028  
 Cell (517) 290-7271  
 email boardatlarge1@biketcba.org  
 Ken Schwartz (517) 332-7322  
 email boardatlarge2@biketcba.org

**OTHER GOOD NUMBERS:**

**Advocacy Committee Chairman:**  
 Mike Unsworth 517-282-7515  
 email: advocacy@biketcba.org

**Bike Travel Case Use Coordinator**  
 Phil Wells (517) 420-0125  
 email: philwells@sbcglobal.net

**DALMAC** email: dalmac@biketcba.org

**DALMAC FUND:** (517) 881-4137  
 Steve Leiby treasurer@biketcba.org  
 email

**DALMAC Treasurer:**  
 Lou Cravotta dalmactreasurer@biketcba.org  
 email office@lmb.org

**LMB Office**  
**Membership Coordinator:**  
 Ed Usewick (810) 922-6934  
 email: membership@biketcba.org

**Chainwheel Editor:**  
 Patricia Mead (248) 573-7228  
 email: chainwheelchatter@biketcba.org

**Northwest Tour:**  
 Jeff Dillingham (231) 357-8330  
 email: nwtour@biketcba.org  
 Website www.biketcba.org/nwtour

**Ride Coordinator:**  
 Colleen Kelley ridecoordinator@biketcba.org  
 email

**Ride Mileage Keeper:**  
 Doug Sherman resto66stang@gmail.com  
 email:

**Routes & Maps:**  
 Dave Mansfield routesandmaps@biketcba.org  
 email

**SummerTour:**  
 Ginger Royston summertour@biketcba.org  
 email:

**T-Shirt Ride:**  
 Bob Noble (517) 925-8028  
 Cell (517) 290-7271  
 email t-shirt@biketcba.org

**Weather:** (517) 321-7576

**Webmaster:**  
 Dan Stockwell webmaster@biketcba.org  
 email:

### Ride Calendar at biketcba.org

Recurring rides are now on BikeTCBA.org. To view rides, go to the TCBA website, [biketcba.org](http://biketcba.org), Event Calendar.

If you want to lead a ride and list the ride on the Event Calendar, e-mail [Ridecoordinator@biketcba.org](mailto:Ridecoordinator@biketcba.org)

**Helmets are required on all TCBA Rides!!!!**  
**Rides :** visit the web site [www.biketcba.org](http://www.biketcba.org).

Class	Pace (average speed on a "level" route with no wind)
Class A+	19+
Class A	17-19 mph
Class B	14-17 mph
Class C	12-14 mph
Class D	Up to 12 mph
Class Z	Over 40 miles at riders' own pace
Class M	Mountain bike "single track" rides

### Change of Address

Go to BikeTCBA.org,  
 Select Member Login  
 Once logged in, select profile  
 Under Personal Info, select Contact Info,  
 then complete your Primary Address.  
  

It's that simple!

*Affiliated with the League of  
American Bicyclists  
and the League of  
Michigan Bicyclists*



Printed on Recycled Paper

**TRI-COUNTY BICYCLE ASSOCIATION  
P O BOX 22146  
Lansing, MI 48909-2146**

**ADDRESS SERVICE REQUESTED**

**TRI-COUNTY BICYCLE ASSOCIATION MEMBERSHIP**

<http://www.biketcba.org/>

Select Member Signup and follow the prompts!

Select options:

- Create a profile
- Renew membership online
- Select interests
- Volunteer opportunities
- Select electronic version of Chainwheel Chatter
- And much more

**Chainwheel**

Want to receive your Chainwheel faster? Simply opt for receiving an email instead of U.S. Mail. This option is available when you renew your membership.

Getting the newsletter via email is almost two weeks faster than U.S. mail.

Website: [BikeTCBA.org](http://BikeTCBA.org)

