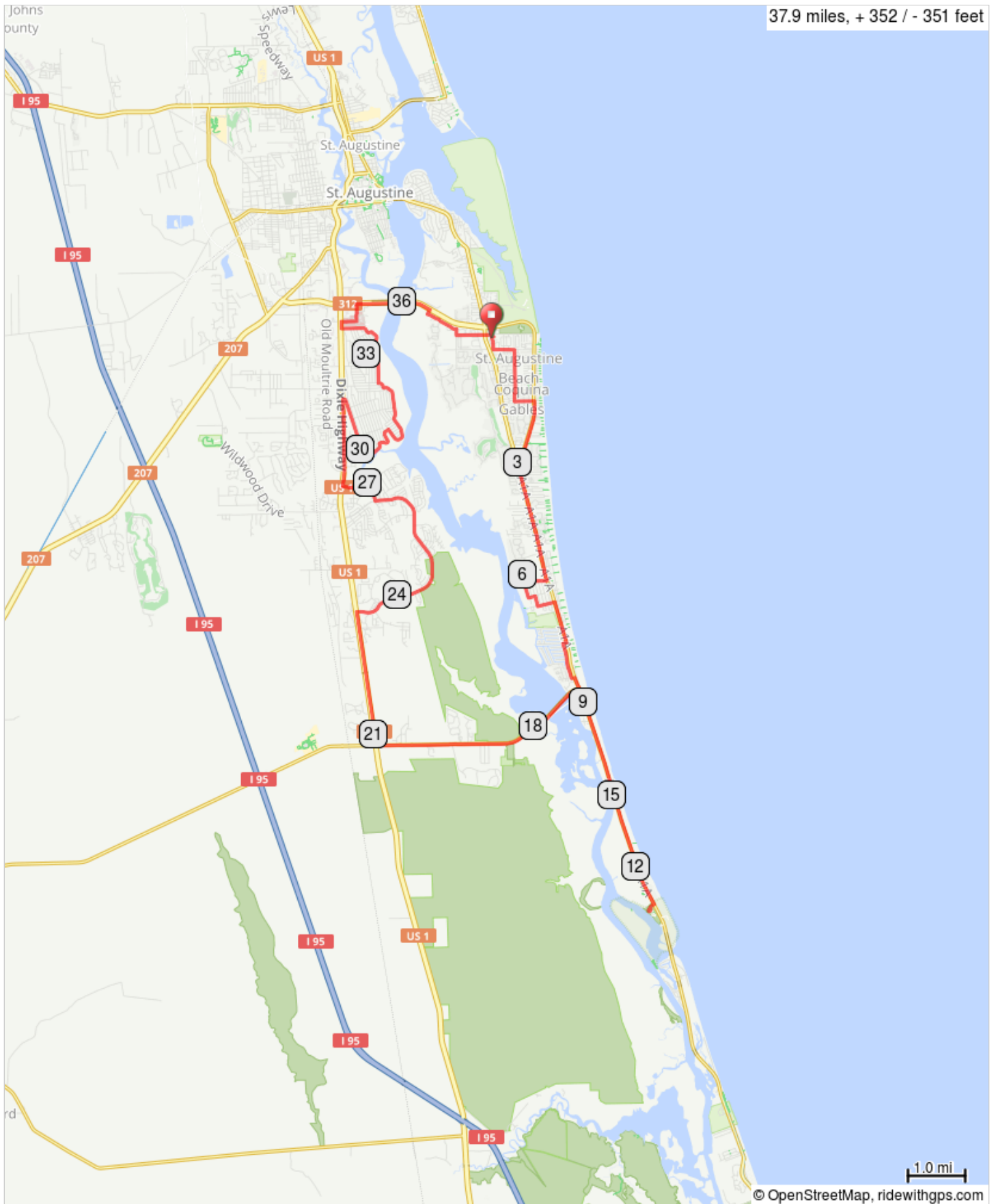


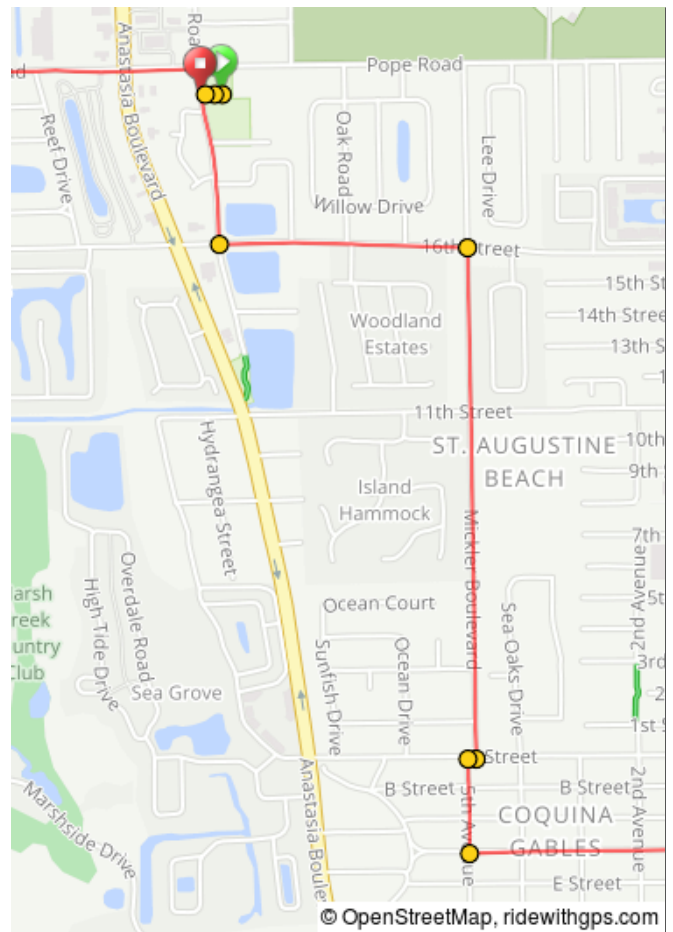
St. Augustine Coastal Ride to the Shores and Shore Drive



St. Augustine Coastal Ride to the Shores and Shore Drive

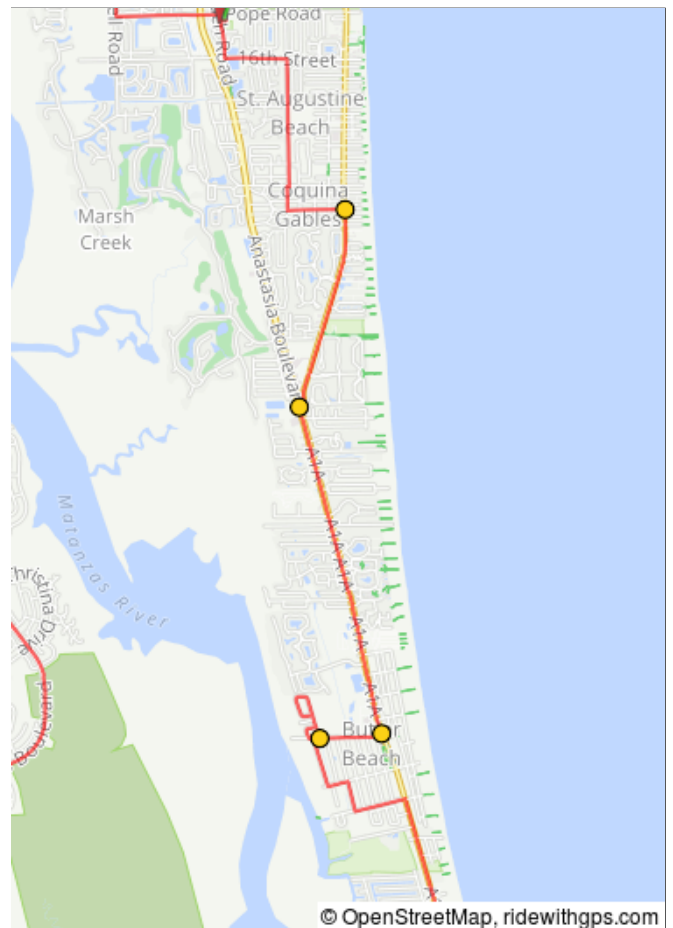
Num	Dist	Prev	Type	Note	Next
1.	0.0	0.0	▶	Start of route	0.0
2.	0.0	0.0	□	Start at Ron Parker Park	0.0
3.	0.0	0.0	←	L onto Old Beach Rd.	0.2
4.	0.3	0.2	←	L onto 16th St	0.4
5.	0.6	0.4	→	R onto Mickler Blvd	0.8
6.	1.4	0.8	→	R onto A St	0.0
7.	1.4	0.0	←	L onto 5th Ave	0.1
8.	1.5	0.1	←	L onto D St	0.3

1.5 miles. +17/-15 feet



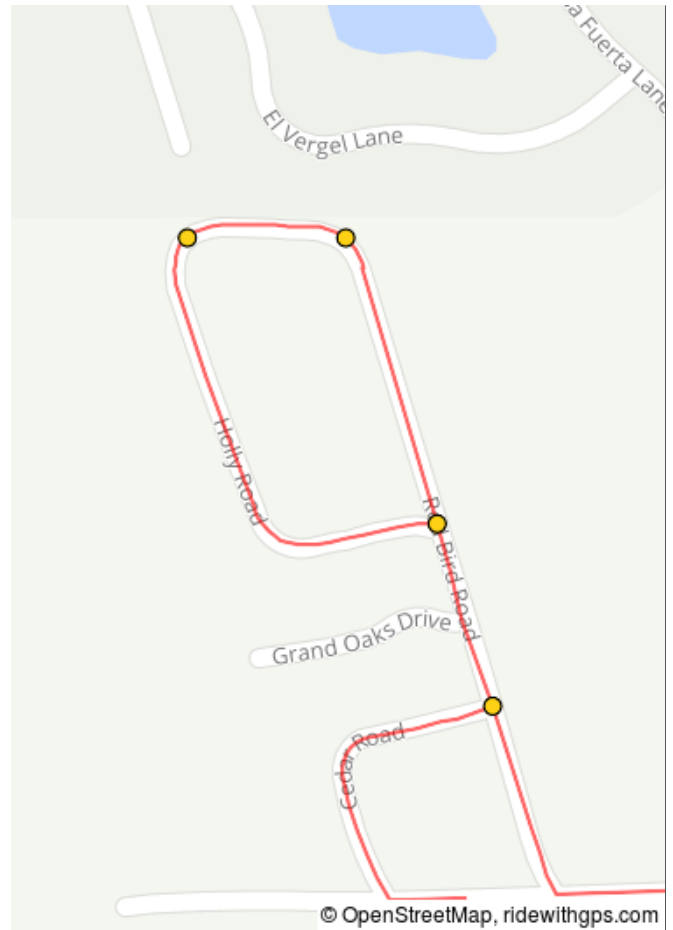
Num	Dist	Prev	Type	Note	Next
9.	1.9	0.3	→	R onto A1A Beach Blvd	1.2
10.	3.1	1.2	←	L onto A1A S/A1A Scenic and Historic Coastal Byway	2.0
11.	5.1	2.0	→	R onto Weff Rd	0.4
12.	5.4	0.4	→	R onto Redbird Rd	0.3

3.9 miles. +24/-29 feet



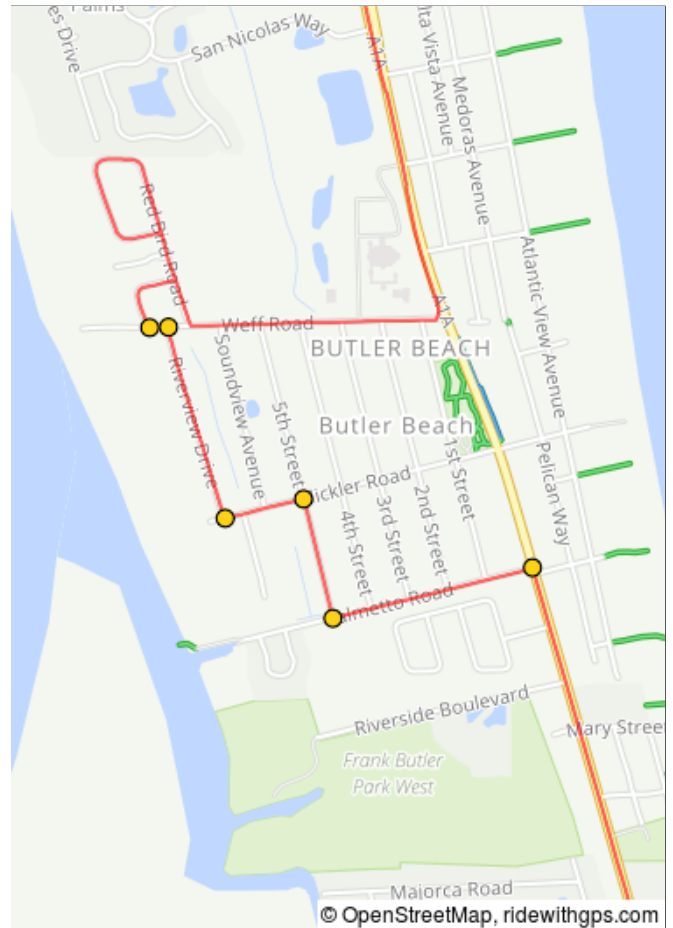
Num	Dist	Prev	Type	Note	Next
13.	5.7	0.3	←	Redbird Rd turns slightly L and becomes Chickadee Rd	0.1
14.	5.8	0.1	←	Chickadee Rd turns slightly L and becomes Holly Rd	0.2
15.	5.9	0.2	→	R onto Redbird Rd	0.1
16.	6.0	0.1	→	R onto Cedar Rd	0.1

0.6 miles. +0/-0 feet



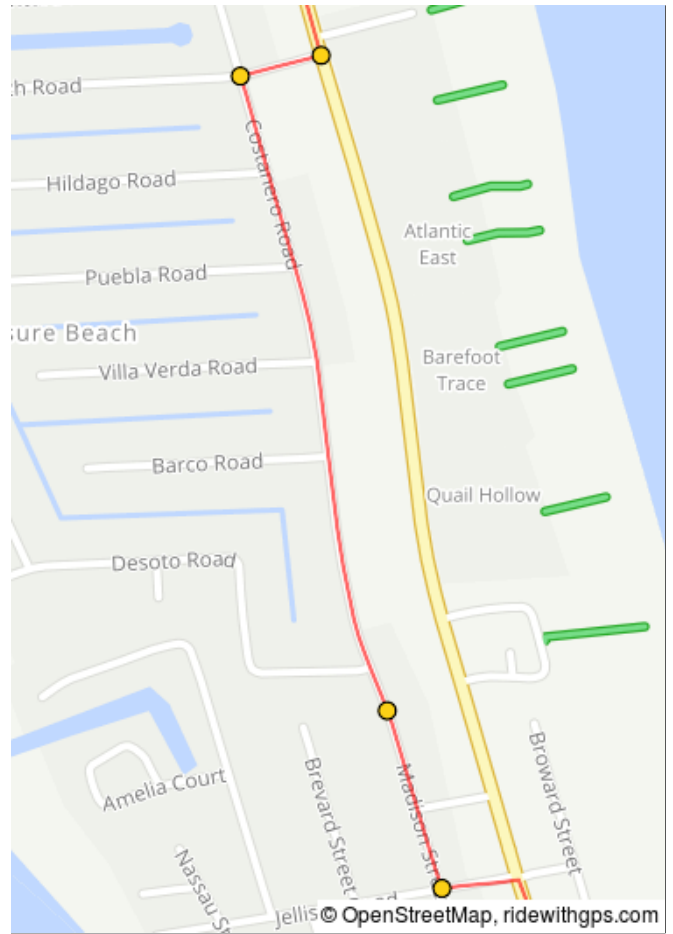
Num	Dist	Prev	Type	Note	Next
17.	6.1	0.1	←	L onto Weff Rd	0.0
18.	6.2	0.0	→	R onto Riverview Dr	0.3
19.	6.5	0.3	←	L onto Mickler Rd	0.1
20.	6.6	0.1	→	R onto 5th St	0.2
21.	6.8	0.2	←	L onto Palmetto Rd	0.3
22.	7.1	0.3	→	R onto A1A S/A1A Scenic and Historic Coastal Byway	0.7

1.0 miles. +4/-0 feet



Num	Dist	Prev	Type	Note	Next
23.	7.8	0.7	➔	R onto Treasure Beach Rd	0.1
24.	7.8	0.1	➜	L onto Costanero Rd	0.5
25.	8.3	0.5	⬆	Continue onto Madison St	0.1
26.	8.5	0.1	➜	L onto Jellison Rd	0.1

1.4 miles. +0/-2 feet



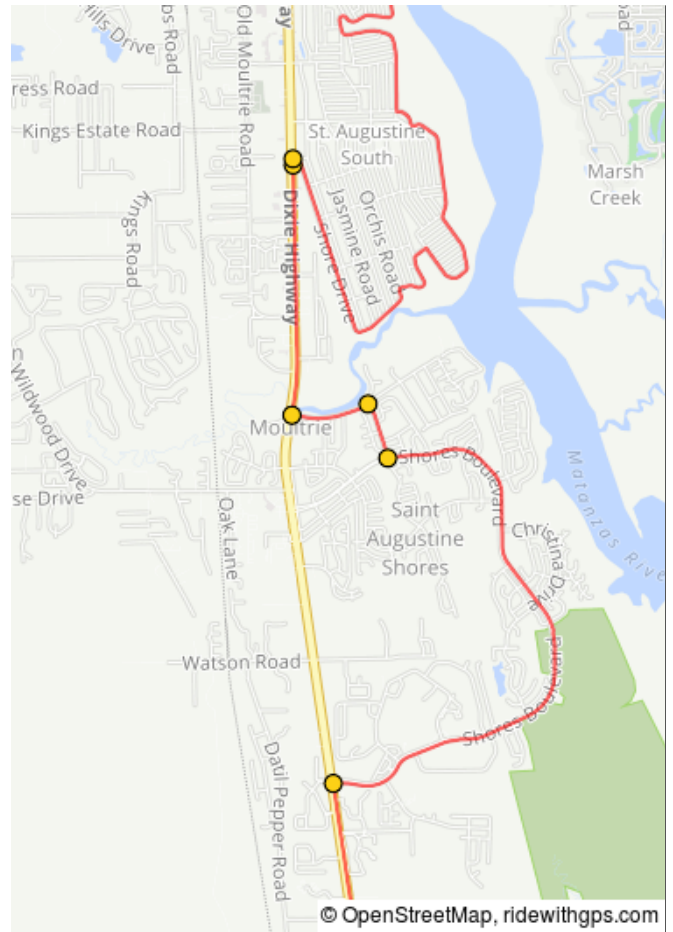
Num	Dist	Prev	Type	Note	Next
27.	8.5	0.1	➔	R onto A1A S/A1A Scenic and Historic Coastal Byway	4.2
28.	12.7	4.2	➔	R into Ft. Matanzas-rest stop	0.0
29.	12.7	0.0	➜	L onto A1A Scenic Byway	4.3
30.	17.0	4.3	➜	L onto FL-206 W	3.9
31.	20.8	3.9	➔	R onto US-1 N	2.3

12.4 miles. +88/-71 feet



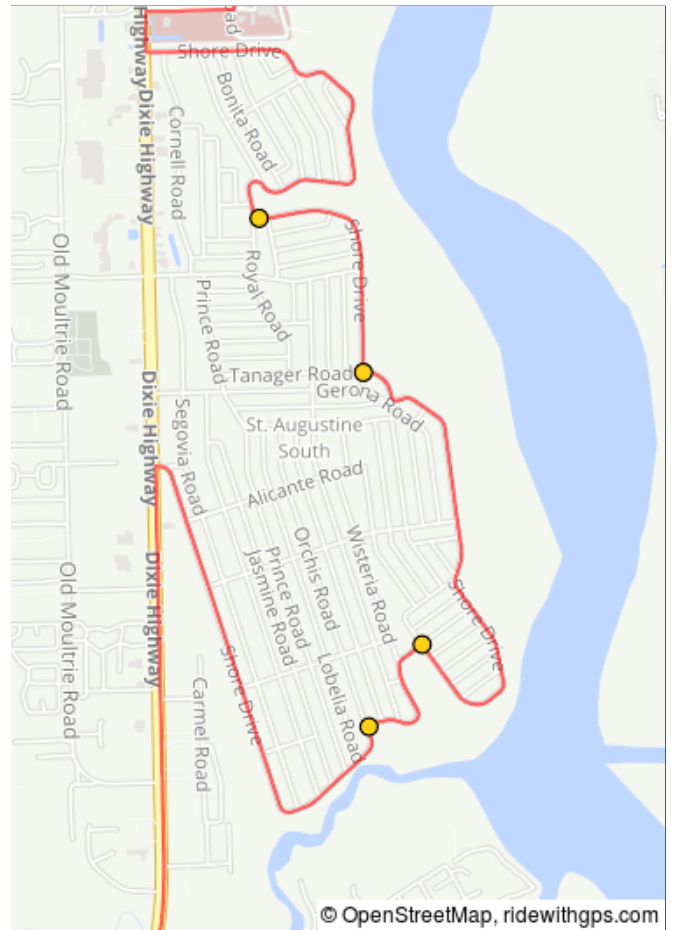
Num	Dist	Prev	Type	Note	Next
32.	23.2	2.3	➔	R onto Shores Blvd	3.5
33.	26.7	3.5	➔	R onto Viscaya Blvd	0.3
34.	27.0	0.3	➜	L onto Vaill Point Rd	0.5
35.	27.5	0.5	➔	R onto US-1 N	1.5
36.	29.0	1.5	□	Rest stop at Marath on Gas	0.0
37.	29.0	0.0	➔	R onto Shore Dr	1.5

8.2 miles. +85/-88 feet



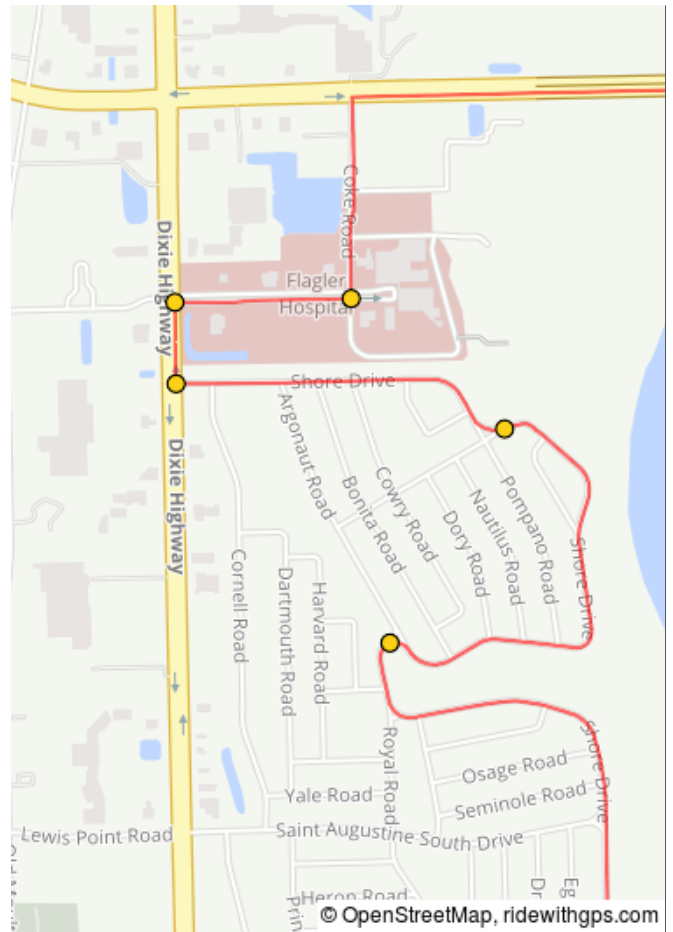
Num	Dist	Prev	Type	Note	Next
38.	30.5	1.5	➔	Slight R to stay on Shore Dr	0.4
39.	30.9	0.4	➔	R to stay on Shore Dr	1.5
40.	32.4	1.5	➔	R to stay on Shore Dr	0.7
41.	33.1	0.7	➔	Keep R to stay on Shore Dr	0.1

4.1 miles. +43/-47 feet



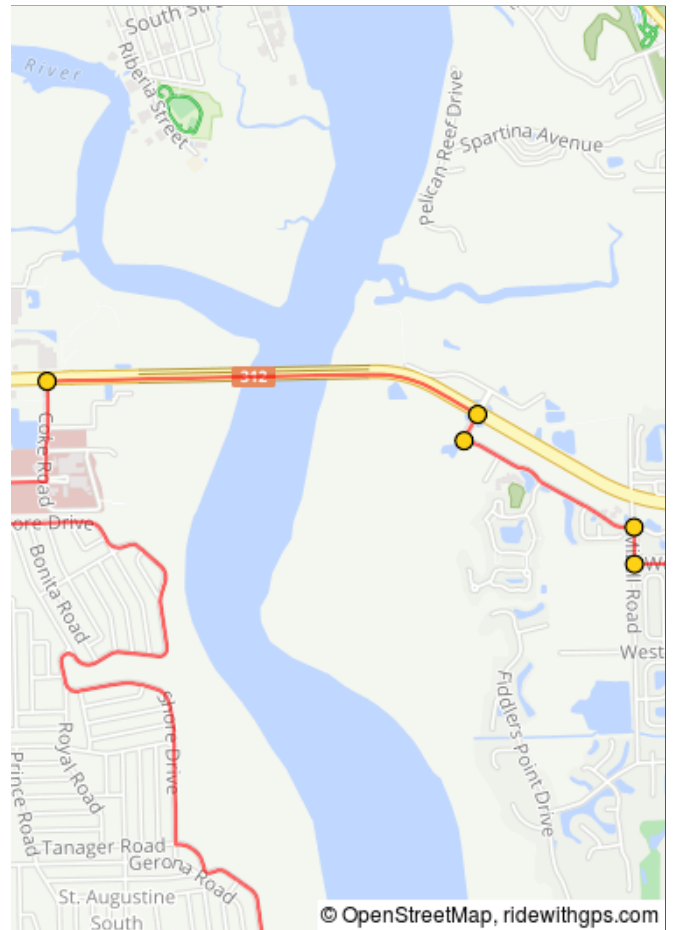
Num	Dist	Prev	Type	Note	Next
42.	33.3	0.1	➔	Slight R to stay on Shore Dr	0.7
43.	34.0	0.7	➔	Keep R to stay on Shore Dr	0.5
44.	34.5	0.5	➔	R onto US-1 N	0.1
45.	34.6	0.1	➔	R onto Health Park Blvd	0.3
46.	34.9	0.3	➔	L onto Sgt. Totten Dr	0.3

1.7 miles. +32/-23 feet



Num	Dist	Prev	Type	Note	Next
47.	35.2	0.3	➔	R onto FL-312 E	1.3
48.	36.5	1.3	➔	R onto Plantation Island Dr S	0.1
49.	36.5	0.1	➔	L to stay on Plantation Island Dr S	0.6
50.	37.1	0.6	➔	R onto Mizell Rd	0.1
51.	37.2	0.1	➔	L onto W Pope Rd	0.6

2.4 miles. +4/-9 feet



Num	Dist	Prev	Type	Note	Next
52.	37.8	0.6	➔	R onto Old Beach Rd	0.0
53.	37.9	0.0	🏁	End of route	0.0

0.6 miles. +0/-0 feet

