

**"No Excuse"
ONLINE
Application for a
MAIL-IN BALLOT**



**"No Excuse"
PAPER
Application for a
MAIL-IN BALLOT**



MAIL-IN BALLOT: PA Act 77 allows any registered voter to apply for a Mail-in Ballot. You may simply request this ballot **WITHOUT A REASON.**



(PLEASE NOTE: You may have applied for an Absentee Ballot in the past. Before the Election Reform Bill, PA Act 77, it was the only absentee voting ballot available.)

DEADLINE: For **2021 Primary--** **ONLINE MAIL-IN BALLOT** Applications should be **RECEIVED** by your County Elections Office* by 5 pm on **May 5, 2021.**



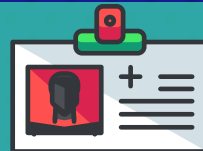
DEADLINE: For **2021 Primary--** **PAPER MAIL-IN BALLOT** Applications must be **RECEIVED** by your County Elections Office* by 5 pm on **May 11, 2021.**

GO to [VotesPA.com](https://www.votespa.com). Choose "Mail-in and Absentee Ballots":
Scroll down and click on **OPTION 1:** "Apply for a Mail-in Ballot **ONLINE**"



GO to [VotesPA.com](https://www.votespa.com). Choose "Mail-in and Absentee Ballots":
Scroll down and click on **OPTION 2:** "Apply for a Mail-in Ballot **BY MAIL**"

Answer "NO" to the three questions and you will proceed with the ONLINE Mail-in Option.
ONLINE ID: You must have a **PA Driver's License** or a **PennDOT ID** to apply.



Can't download/print an application? Request online for an application to be **MAILED** to you or **CALL 412-350-4500.**
PAPER Form ID: **PA Driver's License, PennDOT ID or last 4 digits of SS#.**

Carefully **FOLLOW the DIRECTIONS** to complete your **ONLINE** Application.



Carefully **FOLLOW the DIRECTIONS** to complete your **PAPER** Application.

You may choose to receive **"ANNUAL" Mail-in Ballots** by clicking on that option.



MAIL or TAKE your PAPER Application to: **Allegheny County Elections Office, 542 Forbes Avenue, Suite 604, Pittsburgh, PA 15219-2953.**

Provide your **EMAIL ADDRESS** and you can **TRACK** your Mail-in Ballot. You will receive a confirming email, after you **SEND** your **ONLINE** Application.



***If you do not live in Allegheny County,** Click on **[County Election Office](#)** to find your Election Office.