

SEVERN SAILING ASSOCIATION NOTICE OF RACE AND SAILING INSTRUCTIONS

2018-2020 Edition

311 First Street, Annapolis, Maryland 21403; (410) 268-8744; Website: www.severnsailing.org

The notation '[DP]' in a rule in the sailing instructions or notice of race means that the penalty for a breach of that rule may, at the discretion of the protest committee, be less than disqualification. The notation '[NP]' in a rule of the SIs or NoR means that a boat may not protest another boat for breaking that rule. This changes RRS 60.1(a).

1 RULES

1.1 The regatta will be governed by the rules as defined by The Racing Rules of Sailing (RRS).

1.2 This notice of race and/or sailing instructions (SIs) will not apply if a separate notice of race and/or sailing instructions are published.

2 ENTRIES

2.1 Eligible boats may enter by completing on-line registration at www.severnsailing.org and paying any fees to Severn Sailing Association (SSA), the organizing authority. This must be done in advance at least 2 hours before the scheduled start of the first race for the entering boat.

2.2 Entry fees are as stated in SSA's policies and procedures, section III-J, unless an amendment is posted.

3 NOTICES TO COMPETITORS

3.1 Notices to competitors will be posted on the official notice board located under the outer staircase on the lower level of the SSA clubhouse.

3.2 A competitors' meeting may be held on the first day of a regatta.

4 CHANGES TO SAILING INSTRUCTIONS

4.1 Changes to the SIs made on the first day of the series will be posted within 15 minutes of the conclusion of the competitors' meeting.

4.2 When there is no competitors' meeting, changes to the SIs will be posted by 0900 on the first day of the series.

5 SIGNALS MADE ASHORE

5.1 Signals made ashore will be displayed on the flagpole in front of the SSA clubhouse.

5.2 When flag AP is displayed ashore, '1 minute' is replaced with 'not less than 60 minutes' in RRS "race signals".

6 SCHEDULE OF RACES

6.1 The number of races scheduled for a 2-day event is 5 and for a 1-day event is 3, except:

- when a change in the number of scheduled races is posted on the official notice board no later than one hour before the first warning signal on the day of the event, or
- when the event is listed as a "Short Course" event on the SSA schedule there will be no maximum number of races set for the event.

6.2 The scheduled time for the first warning signal of each race day shall be 1100 hours, except for events designated on the SSA schedule as 1300 hours.

6.3 No warning signal shall be made after 1500 hours on Sundays, except for days designated as 1300 hours starting time when it shall not be made later than 1630 hours.

7 CLASS FLAGS

7.1 Class flags will be a flag displaying the class insignia.

8 RACING AREAS

8.1 Racing will take place in areas "A", "B" or "C" as shown in SI Attachment 2. Racing will take place in area "A" unless a notice is posted.

9 THE COURSES

9.1 The diagrams in SI Attachment 1 show the courses, including the approximate angles between legs, the order in which marks are to be passed, and the side on which each mark is to be left.

9.2 No later than the warning signal, the race committee will designate the course by displaying one or two letters and a number on the course board and the approximate compass bearing of the first leg.

9.3 No later than the warning signal, the order of starts will be displayed.

9.4 No later than the warning signal, the race committee may display code flag "C" with several sound signals to indicate that mark 1 will be a new mark as described in SI 10.4.

10 MARKS

10.1 Marks 1, 1a, 2, 3s, 3p, and 3 will be tall orange cylinders or spheres.

10.2 Marks S and SF will be a tall yellow cylinders.

10.3 Marks F and RF will be a short orange cylinders.

10.4 New marks, as provided in SI 13 will be orange tetrahedrons.

11 CHECK IN

11.1 [DP] [NP] Each boat shall sail by the race committee signal boat and hail her sail number before a boat starts the first race in which she competes each day.

11.2 A boat failing to comply with the check-in procedure shall receive, without a hearing, a 20% scoring penalty in the first race in which the boat competes, calculated in accordance with RRS 44.3(c). This changes RRS 63.1 and A4.

12 THE START

12.1 Races will be started by using RRS 26 or other system if posted on the notice board.

12.2 The starting line will be between a staff or halyard displaying an orange flag on the race committee signal boat and the course side of the yellow cylinder.

12.3 [DP] Boats whose warning signal has not been made shall avoid the starting area during the starting sequence for other races.

12.4 A boat that does not start within 10 minutes after her starting signal will be scored did not start (DNS) without a hearing. This changes RRS A4 and A5.

12.5 The race committee intends to hail premature starters. A boat may not base a request for redress on failure of the race committee to hail any sail or hull numbers; failure of a boat to hear a hail; a boat's position in the sequence of hails; promptness of the hail. This changes RRS 62.1(a)

12.6 A minimum of three boats from a class must be present in the starting area, registered for the regatta and checked in with the race committee prior to the warning signal for the first race of the day for that class for the class to be given a start. For subsequent starts that day, a class must have a minimum of two boats in the starting area prior to the warning signal to be given a start.

13 CHANGE OF THE NEXT LEG OF A COURSE

13.1 To change the next leg of the course, the race committee will lay a new mark, signal in accordance with RRS 33, and remove the original mark as soon as is practicable. When in a subsequent change a new mark is replaced, it will be replaced by an original mark.

14 THE FINISH

14.1 The finishing line will be between staff or halyard displaying an orange flag (Basic & S Finish) or Blue Flag (R and F Finish) on a race committee boat and the course side of the finishing mark.

15 TIME LIMITS

15.1 Time limit is 2 hours for the first boat to finish in each class.

15.2 Boats which have not finished and are still racing 30 minutes after the first boat in their class finishes will be recorded as "Time Limit Expired" (TLE) and will receive a score 2 points more than the number of finishers, but no boat will receive a score greater than the points awarded a DNF. This changes RRS 35, A4 and A5.

16 PROTESTS AND REQUESTS FOR REDRESS

16.1 Protest forms are available on the 2nd floor of the SSA clubhouse. Protests shall be delivered to the race committee within the protest time limit.

16.2 The protest time limit is 60 minutes after the official arrival of the race committee signal boat at the dock. This changes rules 62.2.

16.3 The race committee will post its official arrival time on the notice board.

16.4 Notices will be posted on the notice board within 30 minutes of the protest time limit to inform competitors of hearings in which they are parties or named as witnesses. Hearings will be held on the 2nd floor of the SSA clubhouse unless an alternate location is posted.

16.5 For the SSA Spring Series, Summer Series, and Fall Series, hearings will be scheduled on the following Thursday beginning at 1930 hours.

16.6 RRS 44.1 is changed by adding: "A boat breaking a rule of Part 2 of the RRS may take a penalty any time after the incident and before the start of a protest hearing by taking a 40% Scoring Penalty as calculated in RRS 44.3(c)."

17 SCORING

17.1 Regattas will be scored in accordance with the low point system of RRS Appendix A, except that a boat's series score will be the total of all her race scores.

18 SAFETY REGULATIONS

18.1 [DP] A boat that retires from a race or leaves the racing area prior to the end of racing shall notify the race committee as soon as practicable. If it is not practicable to notify the race committee on the water, notification shall be on shore as soon as possible. The race committee can be notified by contacting any race committee boat verbally, or by VHF channel 65a.

18.2 [DP] A boat shall carry all equipment required by her class rules. If not so specified, she shall also carry one USCG approved PFD, of the appropriate class, for each person on board.

18.3 [DP] All boats shall have available an appropriate line, not less than 25 feet long, which can be used for towing.

18.4 [DP] Appropriate protective clothing shall be worn by competitors from 15 November through 15 March and at all other times that the water temperature is below 60f. Wetsuits or dry-suits may be appropriate for this purpose, but skippers are solely responsible for the safety of their crew, their vessel and themselves.

18.5 The race committee may carry out checks of safety equipment required in SI 18 or class rules.

19 COMMERCIAL TRAFFIC

19.1 [DP] A boat shall not exercise right of way, cross in proximity to, or interfere with reasonable transit of the race area by commercial ships, tugs, or barges. Boats must take evasive action well in advance of a potentially dangerous situation. The US Coast Guard, ship captains, and bay pilots have been encouraged to report any incident they observe.

19.2 The race committee or protest committee may protest a boat for breaking SI 19.1 based on information received from any source. The protest time limit does not apply. A written statement from the US Coast Guard, a ship captain, or a bay pilot will be accepted as evidence without the author present. This changes RRS 60.2, 60.3, 61.3, and 63.6.

20 RADIO COMMUNICATION

20.1 Except in an emergency, a boat that is racing shall not make or receive voice or data transmissions not available to all boats. This restriction also applies to mobile telephones.

21 PRIZES

21.1 Prizes will be awarded to the skippers and crews placing first, second, and third in the regatta.

21.2 Additional prizes may be awarded at the discretion of the organizing authority.

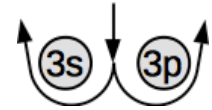
22 DISCLAIMER OF LIABILITY

22.1 Competitors participate in the regatta entirely at their own risk. See RRS 4, decision to race. The organizing authority will not accept any liability for material damage or personal injury or death sustained in conjunction with or prior to, during, or after the regatta.

SI ATTACHMENT 1 - COURSES

The following diagrams indicate show the order, rounding side, approximate angles of the courses that may be sailed. In the below table, the course designation is followed a colon and then the mark rounding order for that course. At a gate, if only one mark is set, that mark shall be rounded to port.

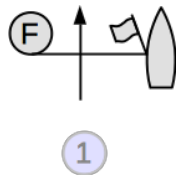
Flag G (Gate):



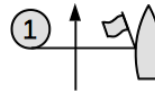
When the race committee displays **Flag G** prior to the warning, then the leeward mark will be a gate. Boats rounding the leeward mark to go upwind shall round either leeward mark.

		Basic Finish	R Finish	S Finish	F Finish
Downwind Finishes	L				
		<p>L2: Start/SF-1-3-1-Finish/SF</p> <p>L3: Start/SF-1-3-1-3-1-Finish/SF</p> <p>Start/Finish Area</p>	<p>LR2: Start/S-1-3-1-3-S -Finish/RF</p> <p>LR3: Start/S-1-3-1-3-1-S-Finish/RF</p>	<p>LS3: Start/3-1-3-1-Finish/3</p> <p>LS3: Start/3-1-3-1-3-1-Finish/3</p>	<p>LF2: Start/S-1-3-1-Finish/F</p> <p>LF3: Start/S-1-3-1-3-1-Finish/F</p>
	LA				
		<p>LA2: Start/SF-1-1a-3-1-1a-Finish/SF</p> <p>LA3: Start/SF-1-1a-3-1-1a-3-1-1a-Finish/SF</p> <p>Start/Finish Area</p>	<p>LAR2: Start/S-1-1a-3-1-1a-3-S-Finish/RF</p> <p>LAR3: Start/S-1-1a-3-1-1a-3-1-1a-S-Finish/RF</p>	<p>LAS2: Start/3-1-1a-3-1-1a-Finish/3</p> <p>LAS3: Start/3-1-1a-3-1-1a-3-1-1a-Finish/3</p>	<p>LAF2: Start/S-1-1a-3-1-1a-Finish/F</p> <p>LAF3: Start/S-1-1a-3-1-1a-3-1-1a-Finish/F</p>
	TL				
		<p>TL2: Start/SF-1-2-3-1-Finish/SF</p> <p>TL3: Start/SF-1-2-3-1-3-1-Finish/SF</p> <p>Start/Finish Area</p>	<p>TLR2: Start/S-1-2-3-1-3-S-Finish/RF</p> <p>TLR3: Start/S-1-2-3-1-3-1-3-S-Finish/RF</p>	<p>TLS2: Start/3-1-2-3-1-Finish/3</p> <p>TLS3: Start/3-1-2-3-1-3-1-Finish/3</p>	<p>TLF2: Start/S-1-2-3-1-Finish/F</p> <p>TLF3: Start/S-1-2-3-1-3-1-Finish/F</p>

Basic Finish

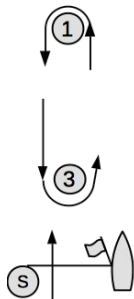


S Finish



W

Finish Area



W2: Start/S-1-3-
Finish/F

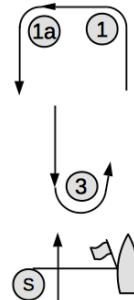
W3: Start/S-1-3-
1-3-
Finish/F

WS2: Start/S-1-3-
Finish/1

WS3: Start/S-1-3-
1-3-
Finish/1

WA

Finish Area



WA2: Start/S-1-1a-
3-
Finish/F

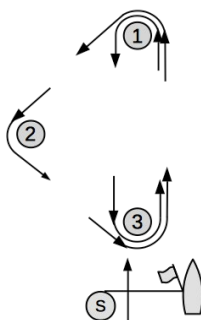
WA3: Start/S-1-1a-
3-
1-1a-3-
Finish/F

WAS2: Start/S-1-1a-3-
Finish/1

WAS3: Start/S-1-1a-3-
1-1a-3-
Finish/1

TW

Finish Area



TW2: Start/S-1-2-3-
Finish/F

TW3: Start/S-1-2-3-
1-3-
Finish/F

TWS2: Start/S-1-2-3-
Finish/1

TWS3: Start/S-1-2-3-
1-3-
Finish/1

SI ATTACHMENT 2 - RACING AREAS

