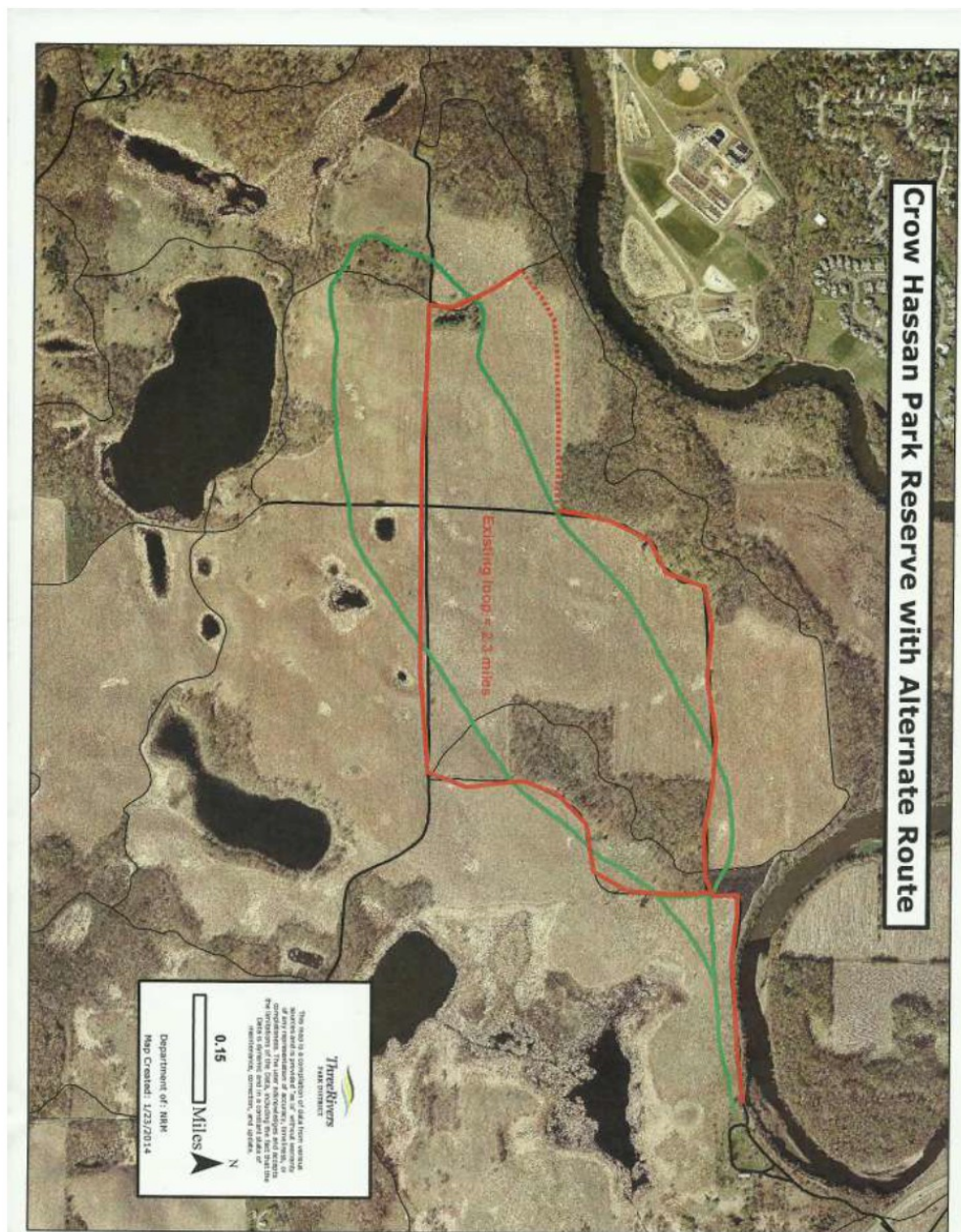


Following are changes required for field trialing on Crow Hassan Park Reserve in 2014 and the future.

a) The field trial gallery must ride on existing park trails (see attached Alternative Route map -Red). Only Handlers, Scouts, Judges and Marshall may ride on the prairie. The gallery may ride to a “find” and then return to road.

b) All horses & dogs must be staked - out within the mowed campground boundaries (see attached Campground Boundaries map) and east of the barn (new cleared area). No horses or dogs staked - out in the un-mowed prairie. Stake-out areas must be cleaned-up and all dog holes must be filled-in.

c) Horses may not be tied to trees (includes trees by break-away area).



Crow Hassan Park Reserve with Campground Boundaries

