

The **Skyline Loop** is 74 miles. It links two of the best cycling roads in the county, the Paint Rock valley's AL-65 and the road along the top of Nat Mountain, CR-8. The route includes one long mountain climb at mile 30 and is hilly, most of the hills coming after the halfway point.

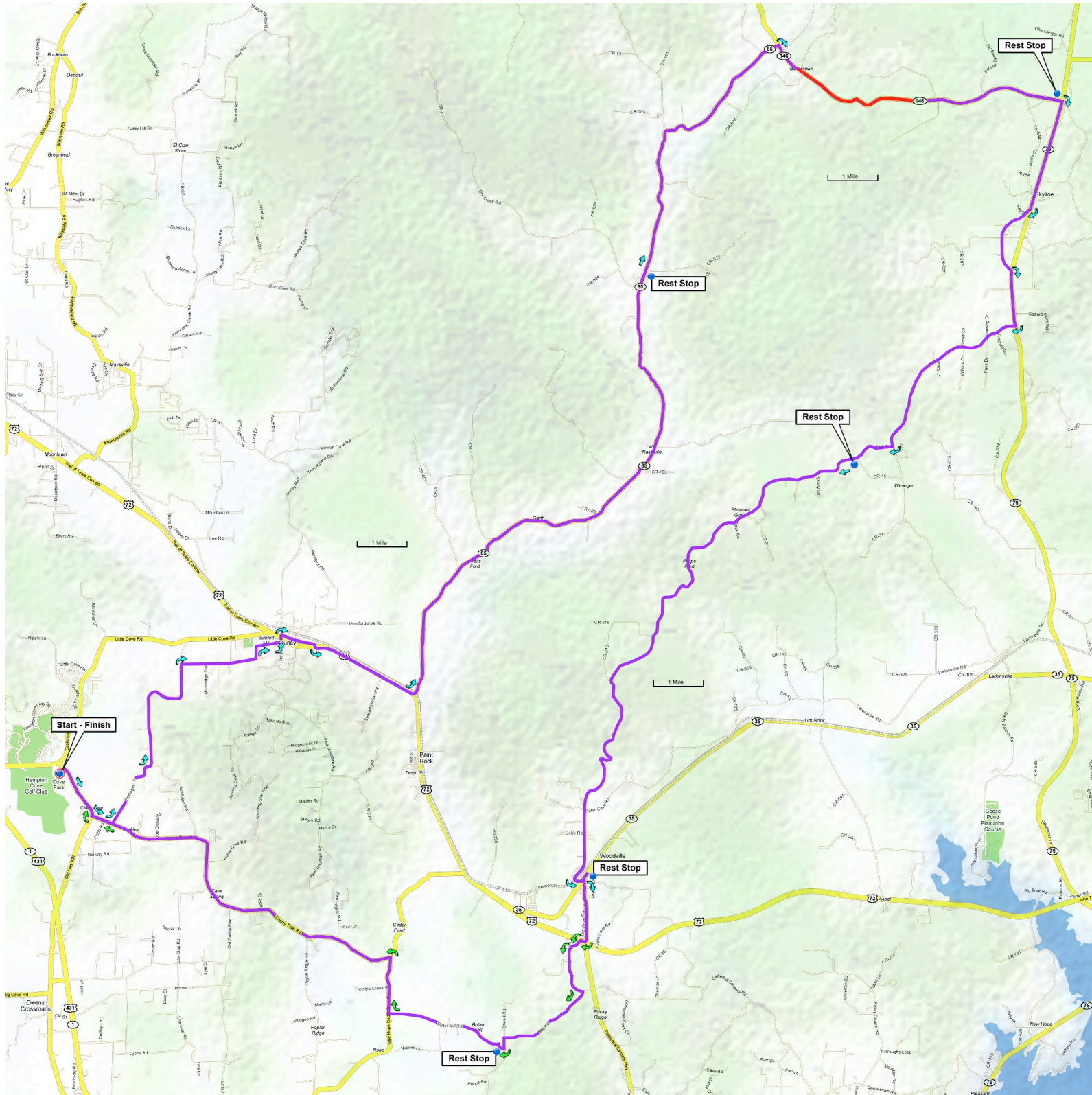
**Directions to start**, at the **Cove Park ballfields** near Hampton Cove:

If traveling over Monte Sano on Highway 431 (east on Governors Drive): go 4.8 miles after passing Monte Sano Boulevard and turn Left at Old 431/Sutton Road. Travel 1.6 miles and turn right onto Old 431. The ballfields are on the right.

If traveling over Cecil Ashburn Drive: continue straight on Sutton Road for 0.7 miles and go straight across Highway 431. From the intersection go 1.6 miles and turn right onto Old 431. The ballfields are on the right.

Turn	Leg	Description	Mile
↗	1.2	Southeast on Old Highway 431	0.0
↖	0.4	on Cherry Tree Road	1.2
↖	1.6	on Esslinger Road	1.6
↖	2.7	on McMullen Road	3.2
↗	1.7	on Miller Road	5.9
↗	0.4	on Childress Street	7.6
↖	0.2	on 4th Street (no sign) cross US-72	8.0
↗	0.4	on Church Street (no sign)	8.2
↑	0.4	at 1st Street onto Walker Street	8.6
↑	2.2	East on US-72 shoulder (wide)	9.0
↖	11.5	on AL-65	11.2
Rest Stop	-	at convenience store on right next rest stop in 17 miles	22.7
↑	6.0	continue North on AL-65	22.7
↗	0.7	on AL-146 at "T"	28.7
Begin Climb	4.9	1,040' in 2.7 miles, 7% avg grade	29.4
↗	0.9	on CR-544	34.3
↗	1.3	on Morris Circle (no sign)	35.2
↗ ↗	1.8	at AL-79 onto CR-25	36.5
↗	1.2	on AL-79	38.3
Rest Stop	-	at store on left next rest stop in 18 miles	39.5

Turn	Leg	Description	Mile
↗	0.2	return North on AL-79	39.5
↖	3.8	on CR-17	39.7
↗	9.8	on CR-8	43.5
Begin Down	3.6	930' in 2 miles, 9% avg grade (switchbacks and rough pavement)	53.3
↖	0.2	across RR Tracks to stay on CR-8	56.9
↖	100'	on AL-35	57.1
Rest Stop	-	at convenience store on right finish in 17 miles	57.1
↖	100'	return South on AL-35	57.1
↖	1.2	at CR-8 onto Grant Highway / CR-63	57.1
↗	0.1	on US-72 (shoulder / merge lane)	58.3
↖	1.4	on CR-108	58.4
↗	2.2	on Mill Road (no sign)	59.8
↗	2.5	on Butler Mill Road (optional rest stop)	62.0
↗	1.1	on New Hope Cedar Point Road at "T"	64.5
↖	7.5	on Cherry Tree Road	65.6
↗	1.2	on Old Highway 431 at "T"	73.1
↖	-	at Cove Park ballfields	74.3



Start - Finish

Rest Stop

Rest Stop

Rest Stop

Rest Stop

Rest Stop

1 Mile

1 Mile

1 Mile

