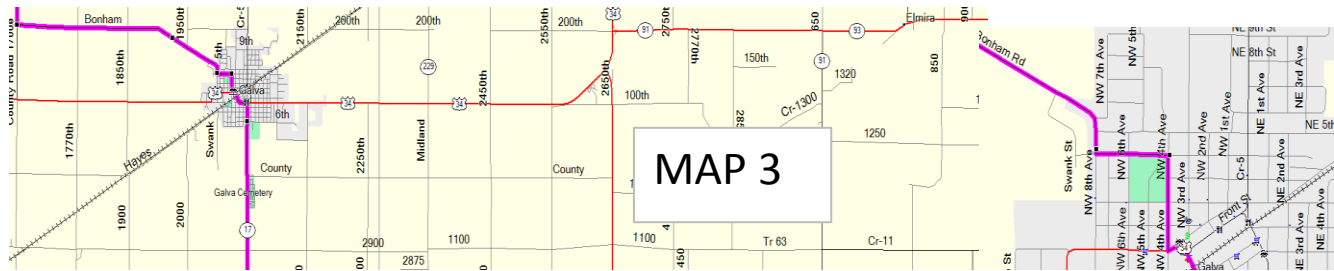
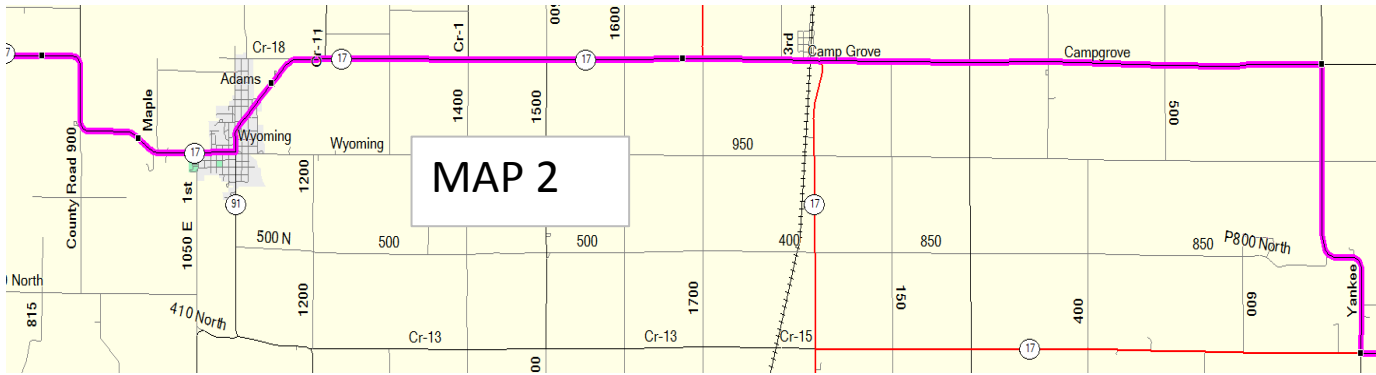
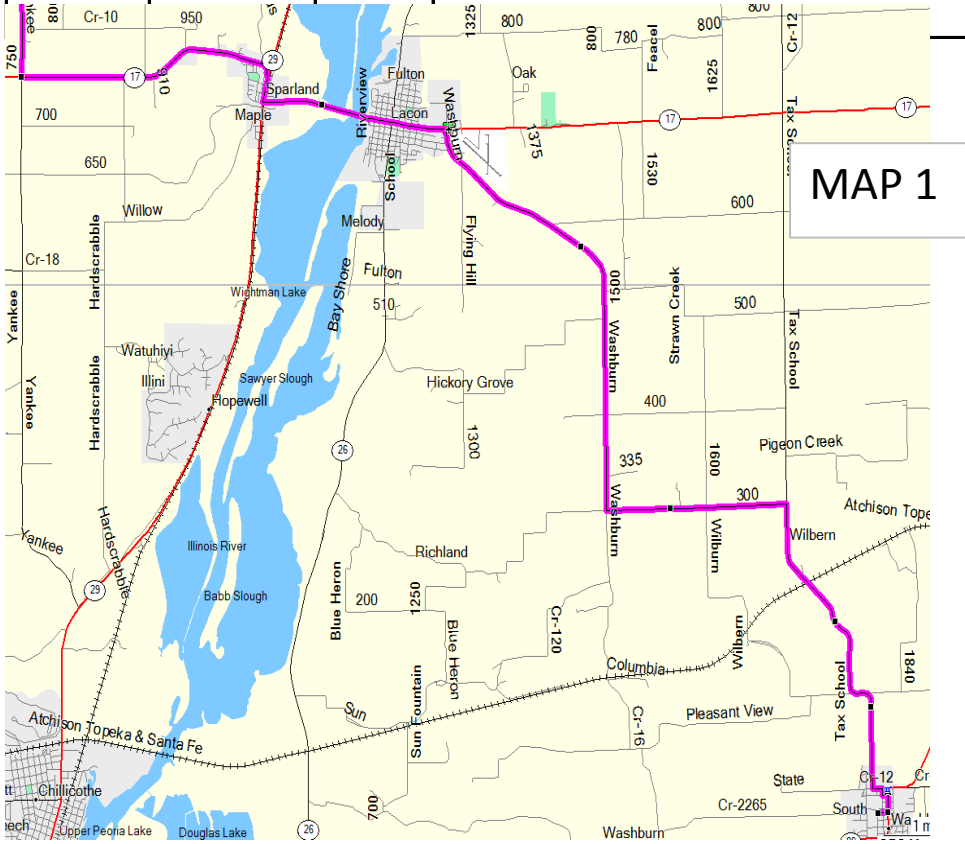


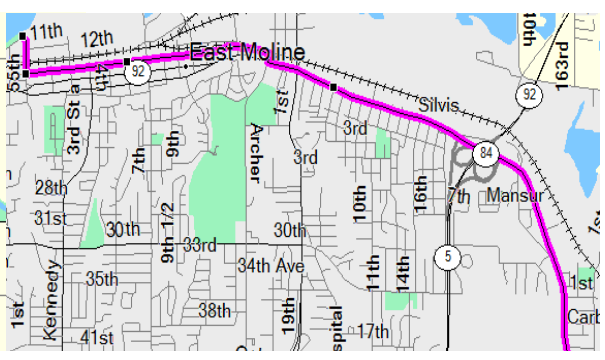
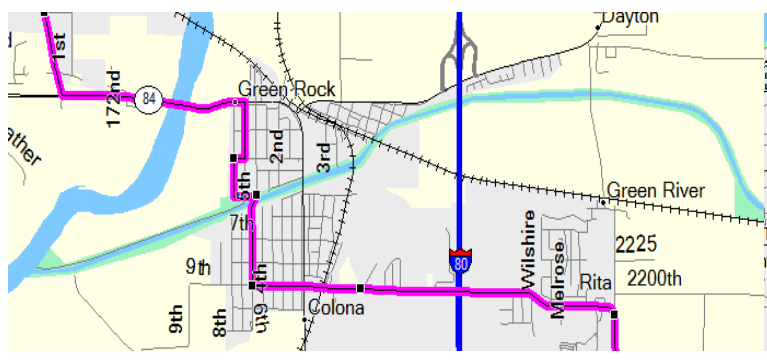
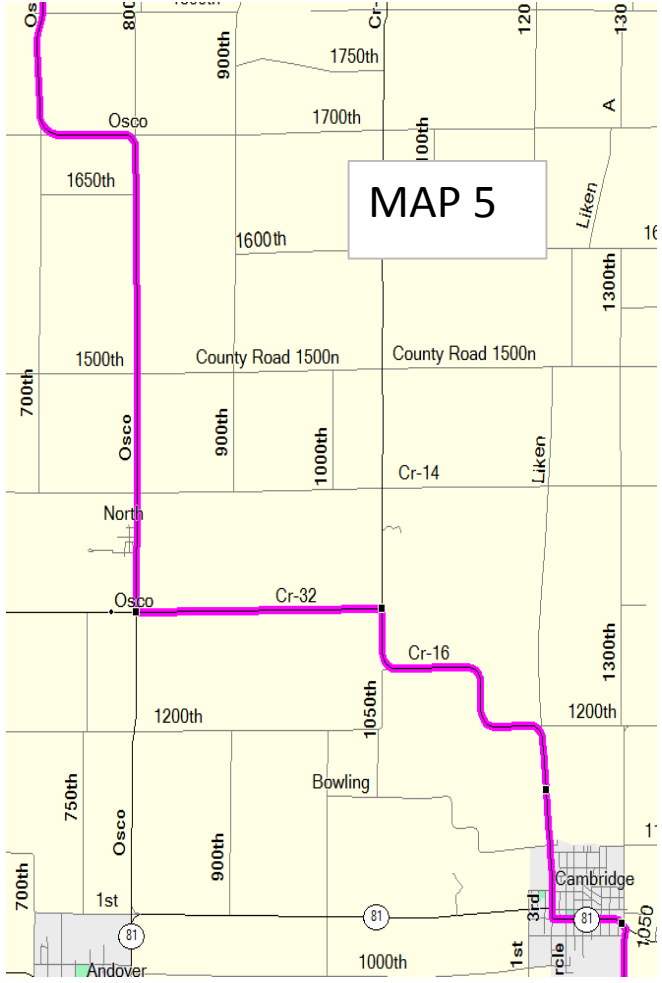
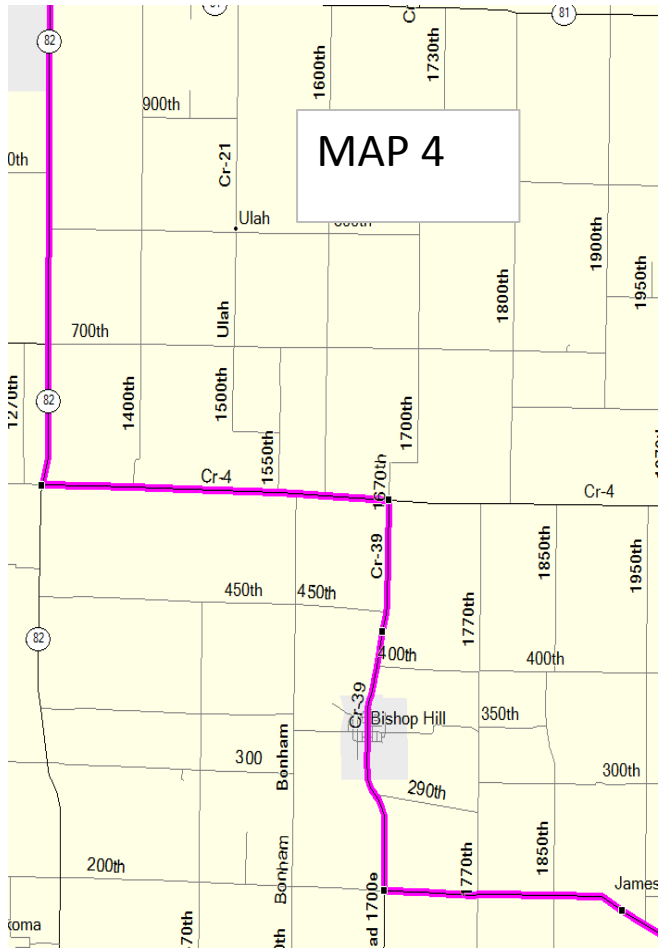
TAILWIND ROUTE SE STARTS IN WASHBURN, IL

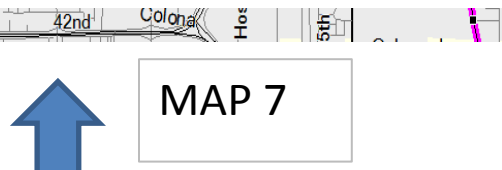
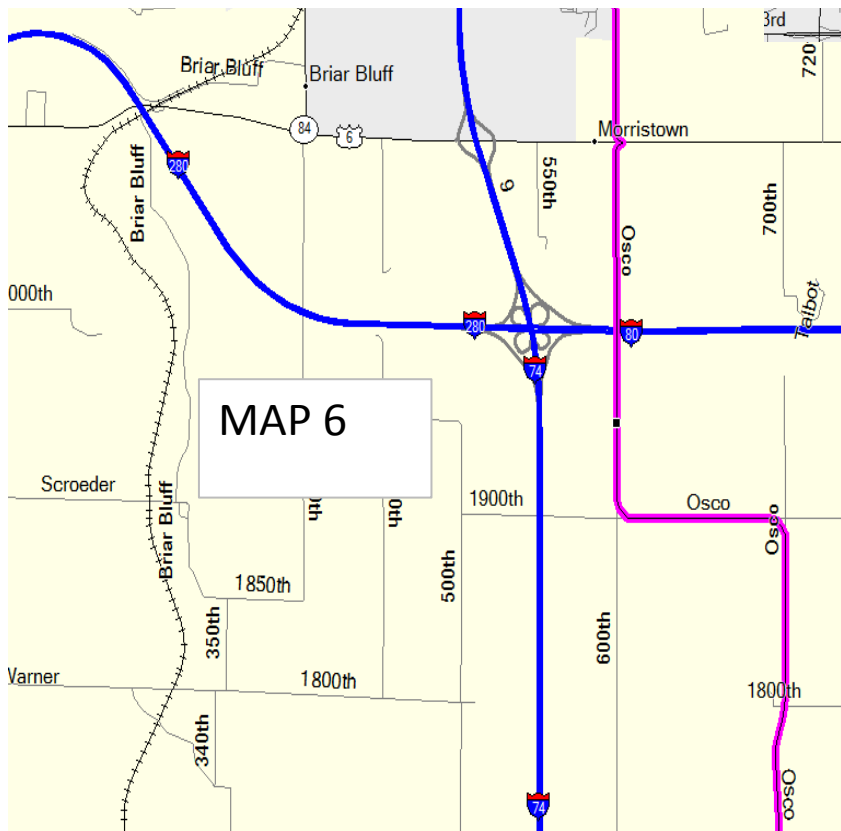
EL. 672ft

| LEG LENGTH | TOT MILES | DIRECTION | LEG DESCRIPTION |
|------------|-----------|-----------|--------------------------------|
| | 0.0 | R | WASHBURN PARK/PARKSIDE ST |
| 0.1 | 0.1 | L | RT. 89 |
| 0.5 | 0.6 | L | CR-3 |
| 0.3 | 0.9 | R | Tax School Rd |
| 3.4 | 4.3 | L | 300N/Washburn Rd |
| 2.3 | 6.6 | R | Follow Washburn Rd |
| 5.0 | 11.6 | L | Lacon/Rt. 17 |
| 2.4 | 14.0 | R | Sparland/Follow Rt. 17 |
| 0.3 | 14.3 | L | Follow Rt. 17 |
| 3.2 | 17.5 | R | Yankee Lane/750 N |
| 3.4 | 20.9 | L | Campgrove Rd |
| 6.6 | 27.5 | S | Turns into Rt. 17 |
| 7.8 | 35.3 | R | Wyoming/Follow Rt. 17 |
| 6.6 | 41.9 | S | Toulon |
| 3.0 | 44.9 | R | RT. 78/RT. 17 |
| 0.4 | 45.3 | L | Follow Rt. 17 |
| 6.2 | 51.5 | R | Follow Rt. 17 |
| 4.0 | 55.5 | L | Galva/Follow Rt. 17 |
| 0.3 | 55.8 | L | Follow Rt. 17 |
| 0.1 | 55.9 | R | NW 4th Ave |
| 0.2 | 56.1 | L | Wiley Park/Galva |
| 0 | 56.1 | R | NW 6th Ave |
| 0.2 | 56.3 | L | NW 5th St |
| 0.1 | 56.4 | R | Veer onto Bonham Rd |
| 3.5 | 59.9 | R | CR-39/1670th St/Bishop Hill Rd |
| 1.5 | 61.4 | S | Bishop Hill |
| 2.1 | 63.5 | L | CR-4 |
| 3.8 | 67.3 | R | RT. 82 |
| 4.7 | 72.0 | L | Cambridge/RT. 81 |
| 0.8 | 72.8 | R | Follow RT. 81 |
| 0 | 72.8 | S | CR-16 |
| 4.0 | 76.8 | L | CR-32 |
| 2.5 | 79.3 | R | Oscro Rd |
| 10.7 | 90.0 | L | Poppy Garden Rd |
| 2.4 | 92.4 | R | Cross RT. 84/6th St Colona |

| | | | |
|-----|-------|---|---------------------------------------|
| 1.0 | 93.4 | L | RT. 84 |
| 1.2 | 94.6 | R | Follow Rt. 84/92/1st Ave Silvis turns |
| 3.2 | 97.8 | S | into 16th Ave/EM, follow Rt. 92 |
| 1.5 | 99.3 | R | 55th St Moline |
| 1.0 | 100.3 | | FINISH |







MAP 7

MAX ELEVATION
876FT

MIN ELEVATION
440FT

ELEVATION GAIN
3075FT

