

Atkinson Island Demonstration Marsh Canoe and Kayak Trails

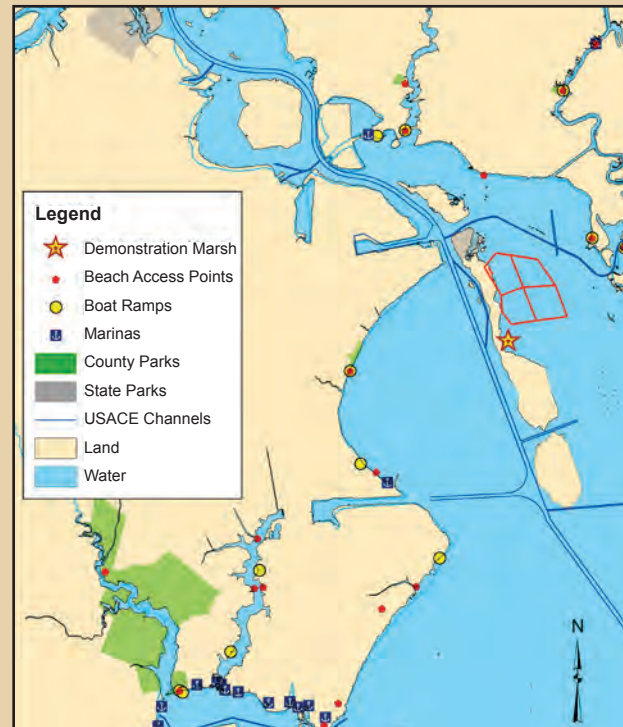
The Port of Houston Authority constructed the 220-acre Atkinson Island Demonstration Marsh (located in upper Galveston Bay) in conjunction with the widening and deepening of the Houston Ship Channel.

The marsh is a demonstration of the beneficial use of dredged material to create intertidal marsh, fishery habitat, and improve water quality in Galveston Bay.

Assisted with a Coastal Management Grant from the Texas General Land Office, the Port of Houston Authority has created a series of canoe and kayak trails through the Demonstration Marsh to provide public access into this habitat and to enhance public awareness of the benefits of the Demonstration Marsh and the other marsh sites that have been constructed and will be constructed in the future using dredged material from the Houston Ship Channel. Access into the marsh is limited to canoes, kayaks, and paddle boats. Motorized water craft are prohibited.

Although the Port of Houston Authority encourages the public use of the canoe and kayak trails, it cautions users that the Demonstration Marsh is an isolated site, far from the mainland. The marsh was constructed to mimic a naturally occurring intertidal marsh with all its wildlife and potential hazards. Water levels within the marsh are dependent on and sensitive to tidal conditions and not all trails will be accessible at low tide conditions. Users must obey all Texas Parks and Wildlife Department boating requirements and plan their use of the canoe and kayak trails in advance in consideration of weather, tides, safety gear, and supply needs.

The Port of Houston Authority
in association with the
Texas General Land Office
Coastal Management Program

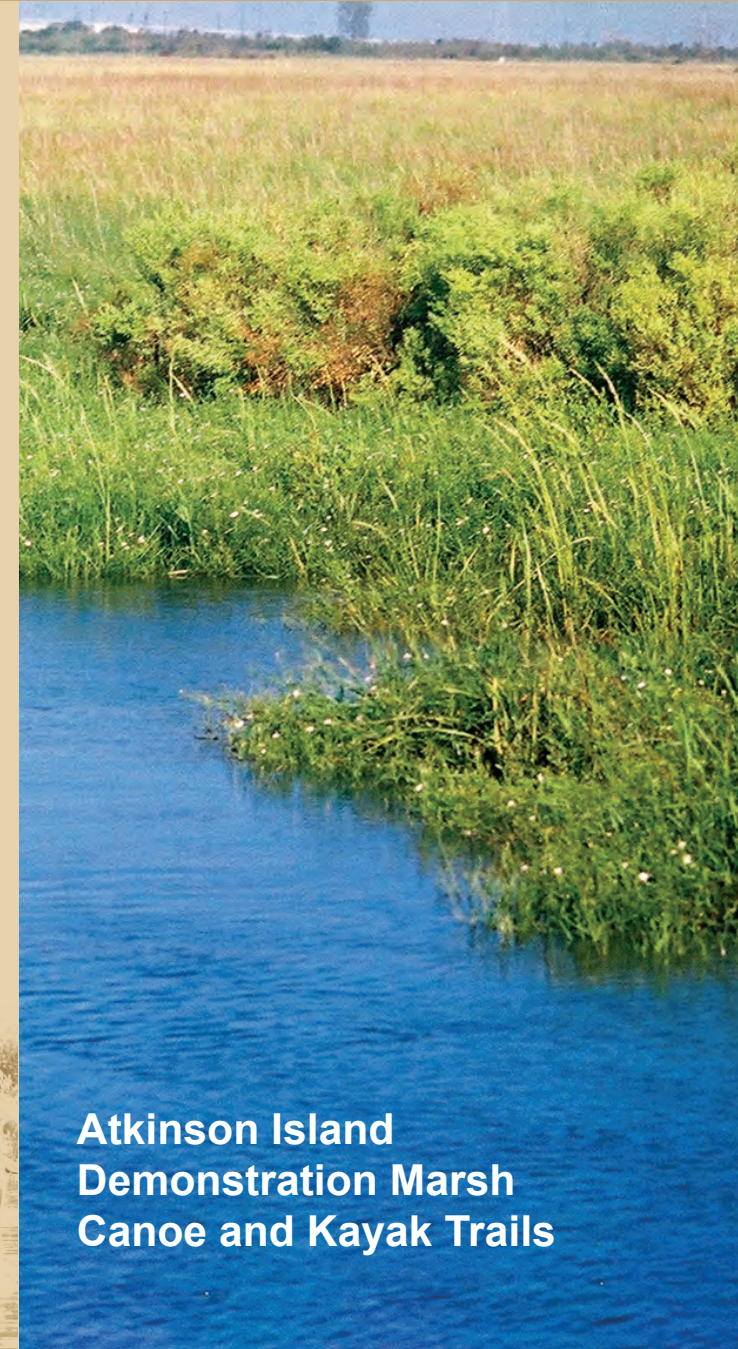


Atkinson Island Demonstration Marsh Canoe and Kayak Trails

www.BetterBay.org



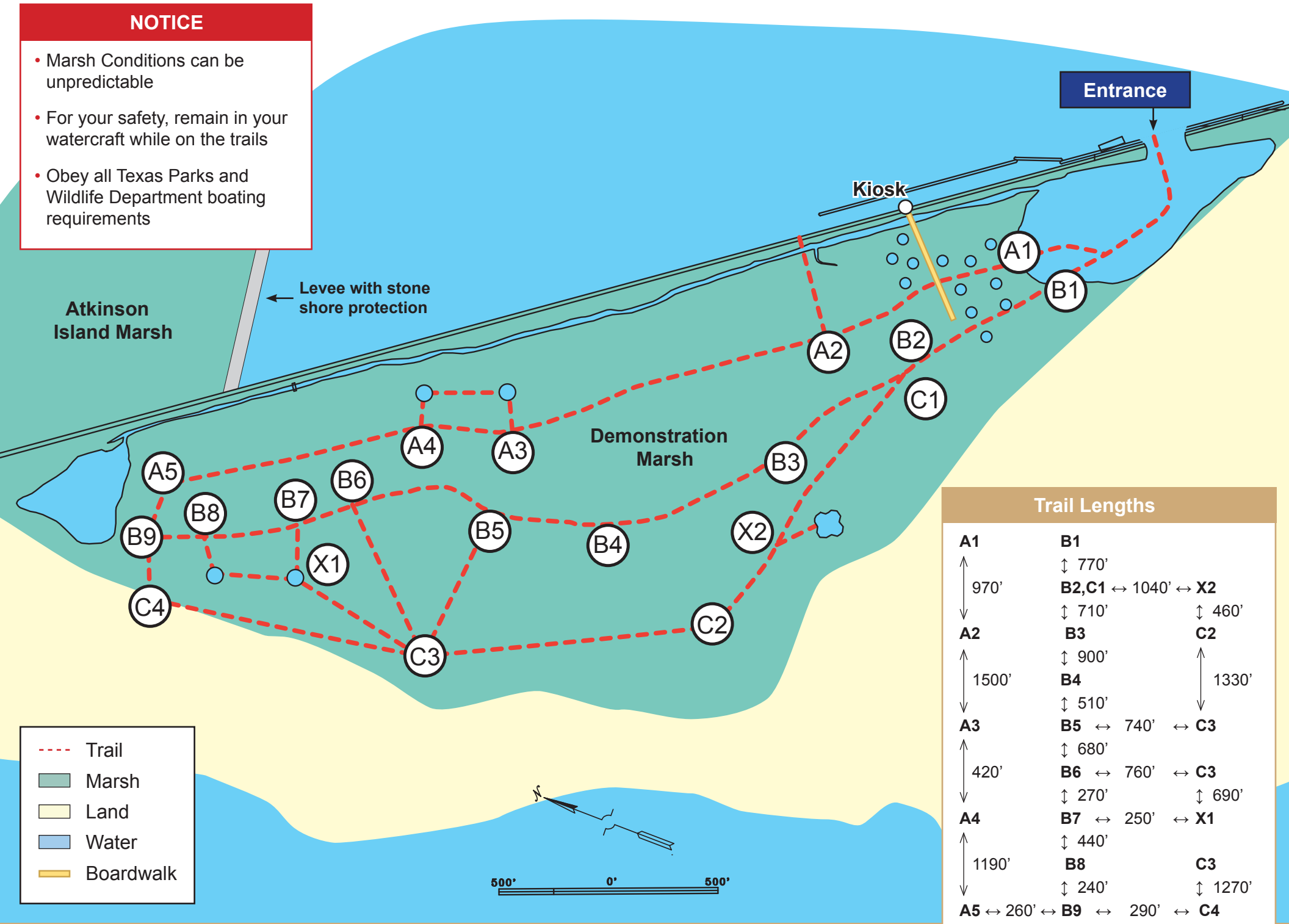
www.portofhouston.com



Atkinson Island Demonstration Marsh Canoe and Kayak Trails

NOTICE

- Marsh Conditions can be unpredictable
- For your safety, remain in your watercraft while on the trails
- Obey all Texas Parks and Wildlife Department boating requirements



- - - Trail
- Marsh
- Land
- Water
- Boardwalk



Trail Lengths

A1	B1	
↑	↓ 770'	
970'	B2, C1 ↔ 1040' ↔ X2	
↓	↓ 710'	↓ 460'
A2	B3	C2
↑	↓ 900'	↑
1500'	B4	↓ 1330'
↓	↓ 510'	
A3	B5 ↔ 740' ↔ C3	
↑	↓ 680'	
420'	B6 ↔ 760' ↔ C3	
↓	↓ 270'	↓ 690'
A4	B7 ↔ 250' ↔ X1	
↑	↓ 440'	
1190'	B8	C3
↓	↓ 240'	↓ 1270'
A5 ↔ 260' ↔ B9 ↔ 290' ↔ C4		