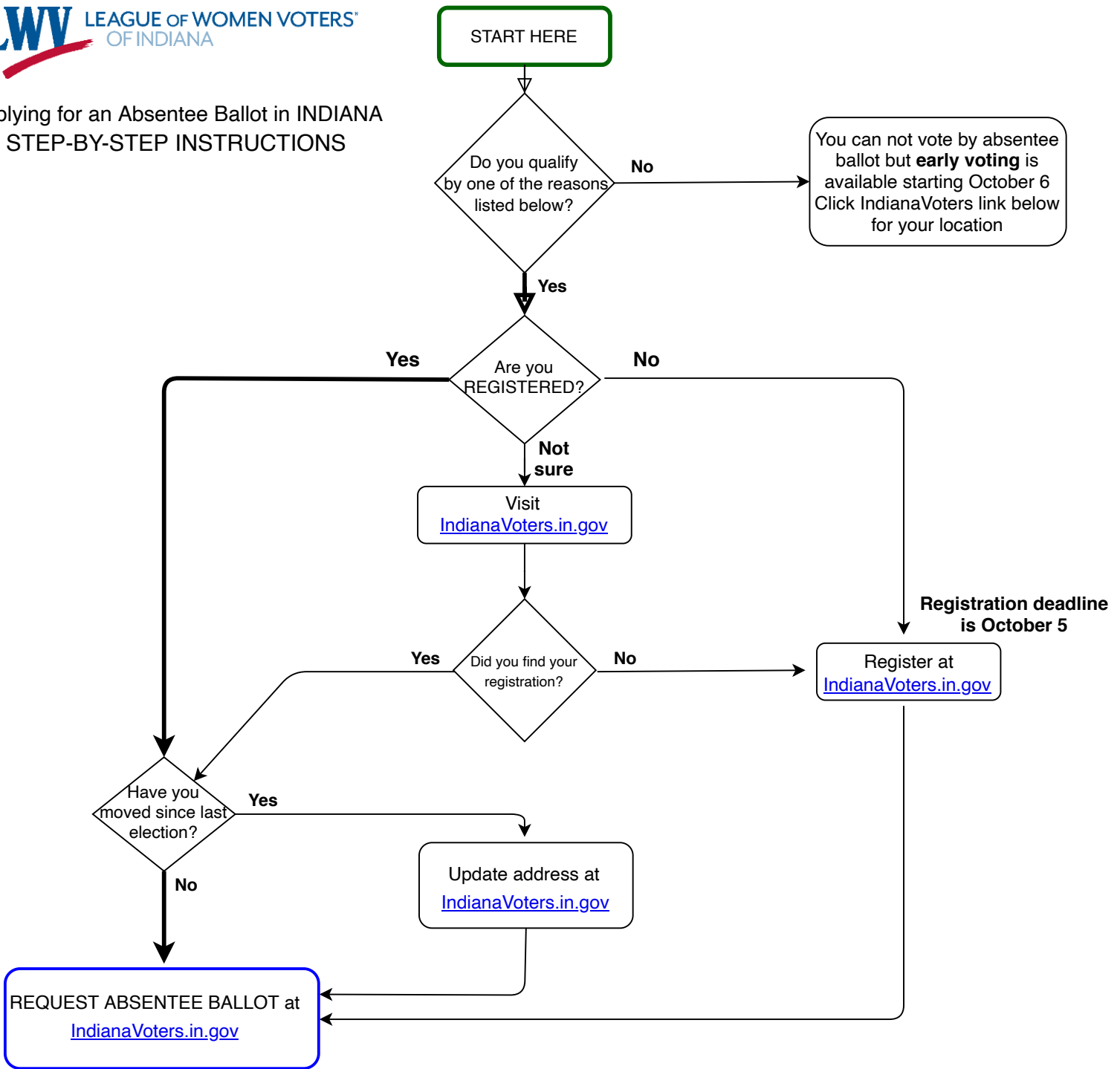


Applying for an Absentee Ballot in INDIANA
STEP-BY-STEP INSTRUCTIONS



DEADLINE TO REQUEST ABSENTEE BALLOT IS OCTOBER 22

Ballots must be received by noon November 3 - postmarks do NOT COUNT

Due to concerns about the ability of the US Post Office to make deliveries on time, it is recommended that you **request and return your ballot as soon as possible**

Click here to visit the State of Indiana Voters Portal
IndianaVoters.in.gov

Indiana Requirements for Absentee Ballots

- I have a specific, reasonable expectation of being absent from the county on election day during the entire twelve (12) hours that the polls are open.
- I will be confined to my residence, a health care facility, or a hospital due to illness or injury during the entire twelve (12) hours that the polls are open.
- I will be caring for an individual confined to a private residence due to illness or injury during the entire twelve (12) hours that the polls are open.
- I am a voter with disabilities. NOTE: If you are unable to mark the ballot or sign the ballot security envelope, you must contact the county election board to process your application.
- **I am a voter at least sixty-five (65) years of age.**
- I will have official election duties outside of my voting precinct.
- I am scheduled to work at my regular place of employment during the entire twelve (12) hours that the polls are open.
- I am unable to vote at the polls in person due to observance of a religious discipline or religious holiday during the entire twelve (12) hours the polls are open.
- I am a voter eligible to vote under the "fail-safe" procedures in IC 3-10-11 or 3-10-12.
- I am a member of the military or a public safety officer.
- I am a "serious sex offender" (as defined in IC 35-42-4-14(a)).
- I am prevented from voting due to the unavailability of transportation to the polls.