



Official Partner of
BMW Motorrad



BISBEE ADVENTURE RALLY

APRIL 6-10, 2022

BISBEE, AZ



COLORADO'S PREMIERE MOTORCYCLE ADVENTURE AND RENTAL COMPANY

WELCOME TO ARIZONA

If you have not ridden in Arizona (especially in the winter time) then you are in for a real treat. Most folks think of Arizona as a hot, barren, desert of a place. Pack with Saguaro's, prickly everything, and enough sand to pack Florida's shore line. While it is hot in the summer, and does have quite a few cactus plants, there is so much more to "The Grand Canyon" state.

Arizona's terrain is really quite varied. From the rather famous "canyon" in the north, to the tree-lined forests around Flagstaff, to the mountains of the Mogollon Rim, to the deserts in the south - Arizona just about has it all. Perhaps the most exciting attribute of the state is its ability to be enjoyed on a motorcycle twelve months of the year!

Our event in Bisbee, AZ is going to be a huge party - and we are so very thankful you have chosen to join us. We hand picked *The Jonquil Motel* for several reasons, first and foremost, the place is super cool. The owners, Sterling Noren and Eva Rupert, are adventure motorcyclists as well, sharing our passion for riding in the backcountry. There really isn't a better suited place to hold a spring time adventure rally than down in Bisbee, AZ at The Jonquil! I believe you will agree.

Thank you again for joining us, I can't wait to spend the long weekend with each of you - riding some amazing AZ backcountry on motos, eating good food, and, more than likely, picking Cholla spikes out of our bodies (if you don't know what these are, you will shortly). See you down in the desert soon!

Sincerely,



Scott Lee

Owner, Colorado Motorcycle Adventures



SCHEDULE OVERVIEW

Our weekend event begins in Bisbee, AZ on April 6th at our host for the weekend, *The Jonquil Motel*. We have lots of activities planned so saddle up friends, it's going to be a super big weekend full of riding, music, good food, drinks, and of course, the awesome company of fellow motorcycle enthusiasts!

TUESDAY, APRIL 5 (FOR THOSE RENTING BIKES)

Arrive at the Phoenix's Sky Harbor airport and take the hotel shuttle over to the *Hilton Garden Inn Phoenix North* where our ride down to Bisbee will begin promptly on Wednesday morning. Discounted lodging rate available for the night of April 5th (see page 7).

WEDNESDAY, APRIL 6

Breakfast: 7am (those renting bikes)
Depart for Bisbee: 8am (those renting bikes)
Arrival and Checkin: 3-5pm (everyone)
Happy Hour: 5pm
Dinner: 6pm
Social Time | Riders Meeting: 7pm

SATURDAY, APRIL 9

Breakfast: 7am
Depart for Day Rides: 8:30am
Happy Hour: 5pm
Dinner: 6pm
Live music: 7pm

THURSDAY, APRIL 7

Breakfast: 7am
Depart for Day Rides: 8:30am
Happy Hour: 5pm
Dinner: 6pm
Movie Premiere from Sterling: 7pm

SUNDAY, APRIL 10

Breakfast: 7am
Depart for Phoenix: 7:30am
Final Checkout: 11am

FRIDAY, APRIL 8

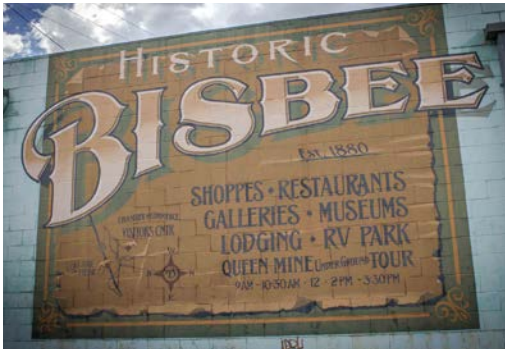
Breakfast: 7am
Depart for Day Rides: 8:30am
Happy Hour: 5pm
Dinner on your own in Bisbee (explore the town)

****OPTIONAL** - we will coordinate a group to ride down to Mexico this evening for tacos (bring your passport if you want to join us)



BISBEE, ARIZONA

Bisbee is a quaint little town situated in the Mule mountains of southeast Arizona. Sitting at 5500' Bisbee was founded in the late 1800s and has quite the mining history. It has been labeled one of the richest mineral sites in the entire world, having produced nearly 3 million ounces of gold and more than 8 billion pounds of copper. Because of it's great mineral wealth, in the early 1900s, Bisbee was the largest city between St. Louis and San Francisco. Bisbee's mines closed in the mid 1970s which opened the town up to an influx of creative folks who settled in, changing the personality of the town. Today, Bisbee is known as a culturally rich community that includes an active and varied population. Bisbee retains its welcoming spirit, offering visitors a rich mix of art, music, history, architecture, outdoor activities, dining and nightlife.



THE JONQUIL HOTEL | BISBEE, ARIZONA

317 TOMBSTONE CANYON, BISBEE, AZ 85603 | (520)-432-7371

Originally built by John Quill in 1937 along U.S. Route 80 during the golden era of the American Road trip, the JQ has been catering to travelers for over 80 years. Originally a service station and motor lodge, Quill and his family operated the motel until the mid-1970s and we've been serving up homestyle hospitality ever since.

Whether you're looking for vintage lodging from which to launch your Southern Arizona adventure or a comfortable place to park your motorbike for the night, the JQ has you covered. With cozy rooms within walking distance of historic downtown and friendly hosts who are hip to the local happenings, the Jonquil is the perfect place to make your own Bisbee history.



PACKING LIST

As you prepare for our weekend in Bisbee, here is a suggested list of items to bring for your tour. This list is not exhaustive as each person has items they enjoy on a ride, it should just spark a few ideas on what you might need. Keep in mind that Bisbee is located about 5000' so it will be chilly when the sun goes down and early in the morning - pack accordingly!

**** HIGHLY SUGGESTED RIDING GEAR ****

- > Full Face Helmet
- > Motorcycle Boots
- > Gloves
- > Riding Jacket (with armor)
- > Riding Pants (with armor)
- > Camelback

OPTIONAL RIDING GEAR

- > Protective Gear (braces, pads, etc if needed)
- > Ear protection
- > Rain gear
- > Tank bag for snacks, camera, and supplies

CLOTHING

- > Tall, warm motorcycle socks
- > Warm base layers
- > Fleece jacket
- > Padded riding shorts
- > Short sleeve shirt base layer
- > Riding Jersey
- > Warm cap for after riding
- > Socks for after riding
- > Comfortable shoes for the evenings

ACCESSORIES

- > Camera
- > Cell phone & charger
- > GPS unit
- > Plug adapter for bike
- > Notebook & pen
- > Tank bag/map holder
- > Emergency locator (if you have a Spot or InReach it would be nice to have with you)

PERSONAL ITEMS

- > Sunscreen
- > Pain reliever (we all need it)
- > Medications (if needed)
- > Sunglasses
- > Money (credit card & cash)
- > Toiletries
- > Snacks
- > Passport if riding to Mexico for tacos



ARRIVAL DAY - APRIL 5TH (FOR THOSE FLYING & RENTING)

If you are flying in for the event and renting a motorcycle, please plan to arrive at Phoenix Sky Harbor airport on the afternoon/evening of April 5th. Once you arrive, simply take the Hilton Garden Inn Phoenix Airport North airport shuttle over to the hotel (5 mins away).

We have a discounted rate of \$119 at the **Hilton Garden Inn Phoenix Airport North** for our group and event. If you'd like to stay here on the evening of April 5th (our staff will be staying here) please email us at info@coloradomotorcycleadventures.com and we will send you the discount booking link. We will begin our ride on Wednesday morning from this hotel, and arrive back on Sunday to this hotel. This hotel does provide a free shuttle to the PHX airport.

HOTEL

Hilton Garden Inn Phoenix Airport North

3838 East Van Buren Street

Phoenix, Arizona, 85008

602.306.2323

ARRIVAL EVENING

Once we arrive at the Jonquil hotel, we will get checked into the event and allow time for you to get checked into your accommodations for the weekend. At 5pm the bar will be open in the backyard of the Jonquil and dinner will be served at 6pm kicking everything off! Please drink a lot of water and get plenty of rest as our riding begins the next morning!



APRIL 7-9: DAY RIDES

We have lots of options for you to enjoy on our day rides. Varying levels are represented, as well as longer and shorter routes. Descriptions and rankings for each are listed below. We'll discuss these on our arrival night at the Riders meeting as well. 1= you still confuse the clutch with the front brake, 5 = you grossly misjudged your riding abilities and now find yourself sprawled out in deep sand.



THE DRAGON MOUNTAINS (out and back)

JQ (Jonquil Motel) – Tombstone – Dragoons – Tombstone – JQ

Experience the beauty and solitude of Cochise Stronghold and the Dragoon Mountains. Easy off-pavement riding through some beautiful high desert scenery. Lunch stop in Tombstone on the way home.

Distance: 160 miles | **Difficulty:** 2 | **Time:** Full Day

Road surfaces: pavement, graded dirt roads, two-track, rockier at the end



MIDDLEMARCH – GHOST TOWN ROAD LOOP

JQ – Tombstone – Middlemarch Road – Ghost Town Road – McNeil – JQ

Ride through Tombstone, AZ on your way north. The Dragoon mountains will be to your north as you ride along Middlemarch Road, an easy off-pavement route to the start of the Ghost Town Trail which links together the former mining communities of Gleeson, Courtland and Pearce.

Distance: 105 miles | **Difficulty:** 2 | **Time:** Half Day

Road surfaces: pavement, graded dirt road, mountain road, potentially rocky, sandy dirt road



PARKER CANYON LAKE – SONOITA LOOP

JQ – Montezuma Pass – Parker Lake – Sonoita – Tombstone – JQ

There's not a lot of water in the desert and Parker Lake is our go-to spot for a swim in the summertime! Ride over Montezuma Pass and across the desert scrublands to Parker Lake. The road shortly turns to pavement with an opportunity to stop in Sonoita or Tombstone on the way home.

Distance: 135 miles | **Difficulty:** 2 | **Time:** Half Day

Road surfaces: pavement, graded dirt road, mountain road, potentially rocky, sandy dirt road



PATAGONIA - AMADO LOOP

JQ – Montezuma Pass – Patagonia – Amado – Sonoita – Tombstone – JQ

Experience some great backcountry riding on this route through the mountains of Southern Arizona. Up and over Montezuma Pass and through the desert to the charming town of Patagonia. The route gets more challenging on the mountain roads to Amado. Return via pavement with a chance to stop in Sonoita or Tombstone.

Distance: 216 miles | **Difficulty:** 3-4 | **Time:** Full Day

Road surfaces: pavement, graded dirt road, mountain road, potentially rocky, sandy dirt road



CHIRICAHUAS LOOP

JQ – McNeil – Rucker Canyon – Portal – Chiricahuas – McNeal – JQ

This big loop takes you east into the Chiricahua Mountains. Ride across the desert through Rucker Canyon and head north for lunch in the small town or Portal, AZ. From there, you will cross over the Chiricahua Mountains and experience one of Southern Arizona's treasures at the Chiricahua National Monument. Return via pavement to Bisbee.

Distance: 210 miles | **Difficulty:** 2 | **Time:** Full Day

Road surfaces: pavement, graded dirt road, mountain road, potentially rocky, sandy dirt road



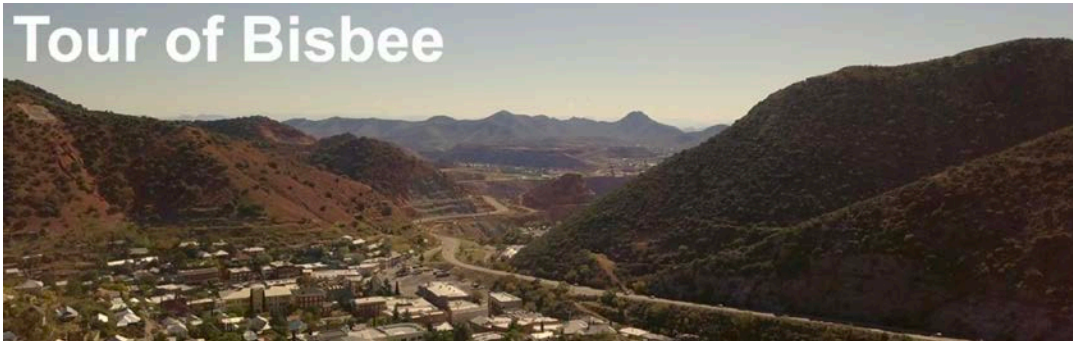
GERONIMO TRAIL LOOP

Bisbee – Douglas – Geronimo Trail – Animas – Rucker Canyon – McNeil – JQ

This day ride takes you through the border town of Douglas, AZ before riding next to the US/ Mexico border wall. The route heads into the Coronado National Forest as the scenery changes to woodland trees and rock formations. Head north through the wide open country to Animas, NM where you can get gas. Continue west with an optional lunch stop in Portal, AZ before continuing south on pavement to Douglas and Bisbee.

Distance: 213 miles | **Difficulty:** 2 | **Time:** Full Day

Road surfaces: pavement, graded dirt road, mountain road, potentially rocky, sandy dirt road



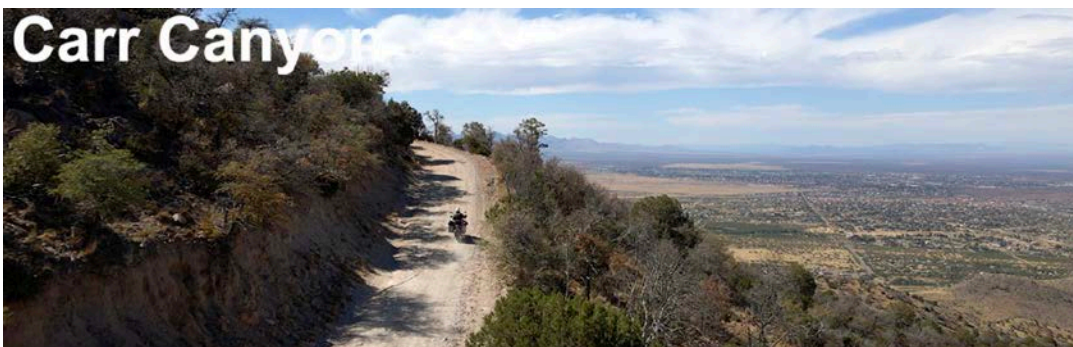
TOUR OF BISBEE

JQ – Juniper Flats – Lowell – Warren – Old Bisbee – JQ

An easy but steep graded road leads to the cell phone towers at the top of Juniper Flats. This short ride gets you up into the mountains above Bisbee for a fantastic view of the city and Mexico off in the distance.

Distance: 17 miles | **Difficulty:** 1-2 | **Time:** 1 hour

Road surfaces: pavement, graded dirt road, mountain road, steep hills and switchbacks



CARR CANYON – TOMBSTONE LOOP

JQ – Carr Canyon – SV – JQ

Get up into the higher elevation and cooler temperatures in this quick ride from Bisbee to the top of Carr Canyon. The road can be steep with loose rocks and some switchbacks. A beautiful campground awaits at the end of the ride. Turn around and come back to Bisbee through Sierra Vista and Tombstone.

Distance: 92 miles | **Difficulty:** 3 | **Time:** Half Day

Road surfaces: pavement, graded dirt road, steep mountain road, potentially rocky, switchbacks



CASCABEL/REDDINGTON RIDE

JQ – Tombstone – Benson – Cascabel Rd – Reddington Rd – Tucson – Sonoita – Tombstone – JQ

This ride takes you north to the town of Benson where you will start riding on the Cascabel Road (easy dirt road) through beautiful Sonoran desert country. Head west on Reddington Road for some more challenging riding on a rocky desert road that eventually reaches the outskirts of Tucson. Return by pavement to Bisbee.

Distance: 232 miles | **Difficulty:** 3 | **Time:** Full Day

Road surfaces: pavement, graded dirt road, mountain road, potentially rocky, sandy dirt road

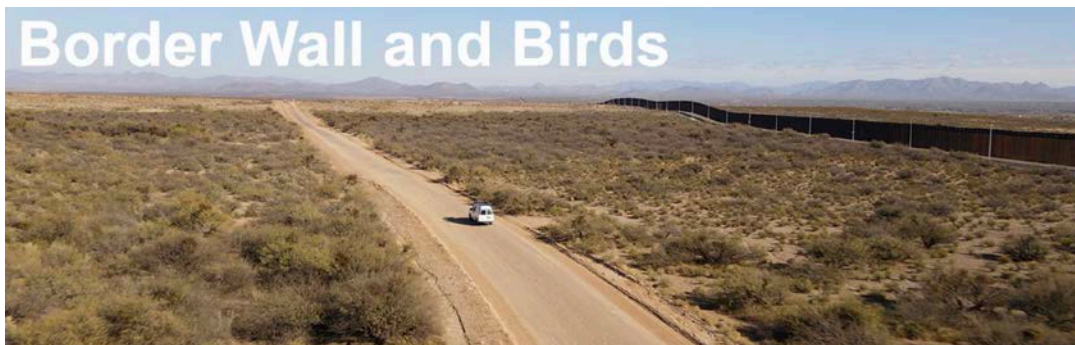


ARIZONA BACKCOUNTRY DISCOVERY ROUTE - DAY 1 AND HALF OF DAY 2

JQ – Coronado National Monument – Sonoita – Empire Ranch – JQ

Distance: 165 miles | **Difficulty:** 4 | **Time:** Full Day

Road surfaces: pavement, graded dirt road, rocky, steep incline and decents, sandy dirt road



BORDER AND BIRDS

JQ – Douglas-Whitewater Draw

Ride along the US/Mexico border wall into Douglas, Arizona and then head into the desert to see the migrating Sandhill Cranes at Whitewater Draw.

Distance: 90 miles | **Difficulty:** 2 | **Time:** 2.5 Hours

Road surfaces: pavement, graded dirt road, rocky, sandy dirt road



BORDER COASTER

This is a really fun, more advanced, optional section on the Patagonia-Amodo loop. It rides along some of the older US/Mexico border wall sections. Expect some steep hills and loose rocks, not to mention a hidden, overgrown track through the desert.

Distance: 19 miles | **Difficulty:** 4 | **Time:** adds another 25 minutes

Road surfaces: steep graded dirt road, rocky, off camber