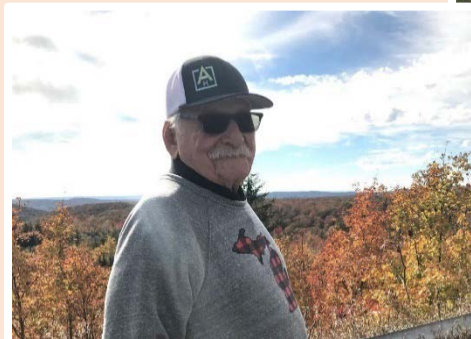




Membership Meeting
May 8, 2018

*ShareCare
2017
Annual Report*



Dear ShareCare Members, Families and Friends,



It has been a truly rewarding experience to be involved with ShareCare this past year. As I look at the photos included on the cover of our Annual Report, I am reminded about the memorable times and the remarkable people who are a part of this organization. We help one another with the tasks of daily living, and we have fun doing it.

Our staff, the ShareCare Board of Directors and a host of volunteers have been working to make ShareCare a successful organization. Our Executive Director, Julie Tarr, has infused ShareCare with innovative ideas and leadership, and Deb Wetherbee's skill and experience in managing the office affairs is amazing. Victoria Maggio, who succeeded Anne Kelly as our nurse, joined the team in November last year. She has become ever more active in her role, manages the volunteers and is a delightful and effective addition to the staff. These three staff members along with the board members are the engine and the fuel.

Our volunteers are, of course, the vehicle of our organization; they deliver the services to our members, be it transportation, meals, a friendly visitor, a handyman or whatever it might be. We're always in need of more volunteers, so if you are not already a part of our volunteer team, do consider it. It is so rewarding.

Much has been achieved in 2017. We are continuing to be careful with expenditures and are building a financial structure that will take us into the future. Support for fundraising activities was good last year, and those who participate enjoy the fellowship and community that we experience by taking part. I encourage you to continue participating in any way that you are able. Leelanau County seniors are the beneficiaries, so thank you for your support!

Angela Wills,
President, Board of Directors

Dear ShareCare Members, Families and Friends,

I am very excited to share the 2017 annual report with you. There has been a lot of activity since last May. Angela Wills stepped in as President and has overseen several significant changes to the organization. In October we hosted our first donor reception at Willowbrook Mill in Northport where we shared our vision for ShareCare and asked donors to help us reach our goal of becoming a sustainable organization. In November, we hired Victoria as Care Coordinator and she brings a new level of energy and enthusiasm for the Care Team Volunteers. The biggest change this year was to reorganize the regions from four school district boundaries to 12 geographically defined regions that will be more manageable for the Care Team Volunteers to get us back to our roots of neighbors helping neighbors. Already we are hearing positive things coming out of this change from small gatherings in member's homes to additional contacts being made. ShareCare continues to evolve and I look forward to working with you as we support the senior citizens of Leelanau County. Thank you for all you do, it couldn't happen without you!

Julie Tarr,
Executive Director

Purpose-25th Anniversary Recognition

ShareCare was founded 25 years ago to help seniors live independently and safely in their own homes for as long as possible. Based on the idea of “neighbors helping neighbors,” ShareCare helps in a variety of ways, including:

- ShareCare’s Care Coordinator is a Registered Nurse who oversees a team of Care Team Volunteers spread out across 12 regions throughout Leelanau County
- Care Team Volunteers routinely check-in on neighbors and organize services delivered by volunteers when a person needs additional support, which can include anything from providing home-cooked meals, delivering durable medical equipment, stopping by for a friendly visit or providing respite for a caregiver.
- ShareCare’s most active program is its Driver-of-the-Day providing transportation services by volunteer drivers. Medical appointments take priority, but if drivers are available we will transport people to other types of appointments as well.
- When more care is needed than volunteers can provide, ShareCare has a list of screened independent service providers.
- In collaboration with Leelanau County Senior Services, ShareCare provides educational workshops on dementia, avoiding scams, financial advising and many more.
- Fun fundraisers, like Saving Birds, Golf Outings, Movies at Bay Theatre and Music, Wine and Cheese provide important social activities, and prevent social isolation.
- ShareCare provides the opportunity to volunteer in a meaningful way.
- While ShareCare members pay an annual fee based on their age at the time of joining, ShareCare provides some services to the public, through its collaboration with Senior Services, loaning its durable medical equipment, and providing referral information.

Notable Events in Our History

- 1993: Article of Incorporation filed April 12, 1993 “The purpose or purposes for which the corporation is organized shall be to administer, manage, operate and control an entity to provide services for senior and other citizens of Leelanau County who are ill or infirmed to allow them to remain in their homes as long as possible, and in furtherance of these purposes, to exercise all the powers permitted to be exercised by a non-profit corporation under the laws of the State of Michigan.”
- 1994: IRS Special Ruling Allows that: Receiving Services does not preclude a member’s dues deductibility. All contributions may be considered charitable donations.
- 1994: 400 Charter members launch ShareCare launched by a \$35,000 Kellogg grant
- 1994: IRS urged we make provision for assistance to members who may have unmet needs due to financial difficulties. The “Access Fund” was established ins 2004 and decisions are determined by staff to provide confidentiality.
- 1998: An Endowment Fund was established in 1998 with the Grand Traverse Regional Community Foundation. The value of the fund is currently \$200,000.
- 2015: Strategic Plan that formulated three overarching organizational goals of member services, financial stability and management, including hiring of Executive Director.
- 2016: Membership fee for new members eliminated and 2017 annual were dues raised.
- 2016: Members joining after 2016 owe annual dues on the anniversary of their joining rather than pro-rated to become due in May.
- 2016 Formed partnership with Leelanau County Senior Services to share nurse
- 2018 Launched Senior Ride Service to widen ShareCare’s reach in Leelanau County

ShareCare Today

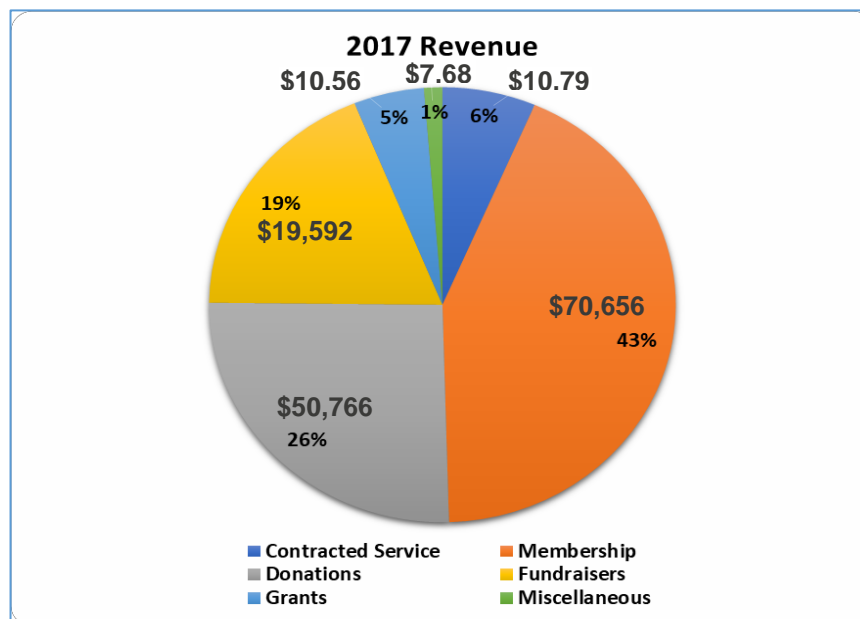
Membership

ShareCare currently has 342 members. The table below shows the age distribution of our current membership. The mean age is 78, and 51% of members are less than 80, meaning there are still a good number of eligible drivers. We should see a much higher number of people in their 60's, which is the age many people move to Leelanau County. Because seniors often do not need services at this age, more needs to be offered to them for their membership in terms of rewards of volunteering and the social benefits of belonging to a community.

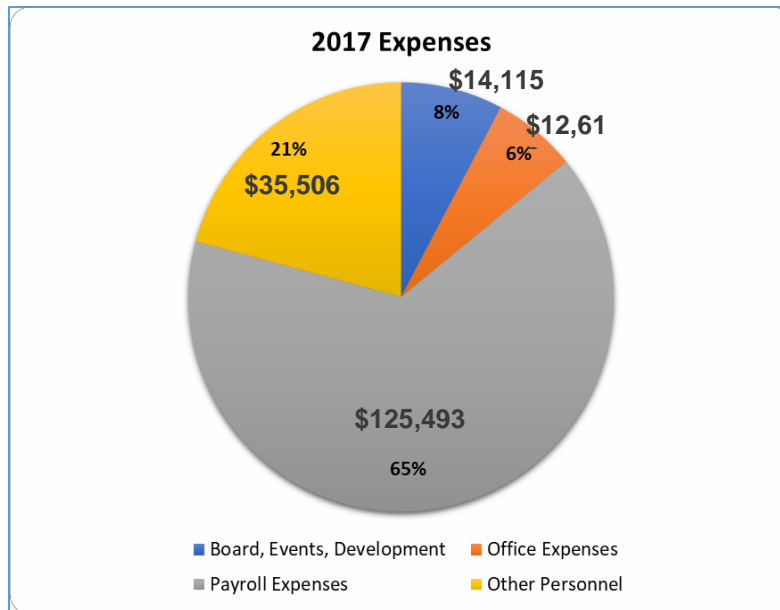
Less than 70	12%
Less than 80	39%
Less than 90	31%
Less than or equal to 100!	11%
Age unknown	7%

Financials

The membership continues to provide most of the support to ShareCare's operating budget, with 43% of overall revenue coming from membership fees and 26% from donations. Fundraisers brought in 19% of the revenue and the contract with Leelanau County Senior Services made up 6%. Grants and miscellaneous income made up the remaining 6% of revenue.

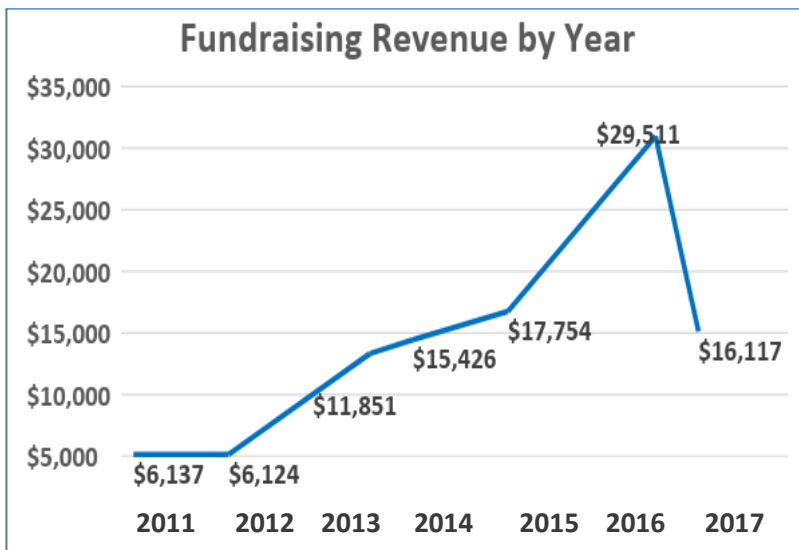


Expenditures were primarily staff related expenses. Payroll made-up 65% of expenses and other personnel expenditures, which included health insurance, was 21%. The board, events and development were 8% and office expenses were 6%.



Fundraising

Fundraising continues to be a significant focus of staff and volunteer efforts. Over the last seven years the need to raise more money through fundraising has increased as seen in the graph below. Last year, we did not meet our fundraising goal of 22,000 despite having several successful fundraisers.



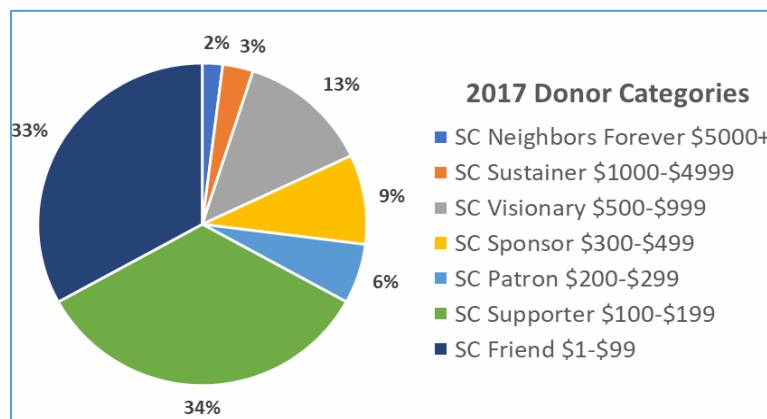
2017 Major Fundraisers	Proceeds
Golf	\$6229
Movie	\$4804
Music Soirees (7)	\$4490
	\$16,117

Assets as of Dec. 31, 2017

Vanguard Investment	
• Investment at Cost	\$189,717
• Market Value Adjustment	34,852
Total Vanguard Investment	\$224,569
Checking	\$25,264
Access Account (Restricted)	\$18,618

Donations

Donations from the annual fund drive, memorials, honorariums, and general donations equaled \$50,766 in 2017. The chart below shows donor categories and the percentage of donors in each category.



Our Circle of Friends (members that give \$500 and above) has grown in recent years. The annual fund drive brings in approximately \$20,000 each year in gifts, and slightly more than half of that comes in from Our Circle of Friends. Knowing we can count on friends that have committed to give at a sustainer level each year helps us to balance year-end operating costs. This is particularly helpful considering most of the membership dues are received in May. Balance cash flow is an ongoing struggle of most nonprofits and in an effort to rely less on annual gifts and fundraising, our focus has turned to strategies will provide an endowment for ShareCare's sustainability.

Planned Giving

ShareCare Endowment at the Grand Traverse Regional Community Foundation

Nearly twenty years ago, the ShareCare Board of Directors understood that ShareCare needed to be sustained for years to come to support the growing population of Leelanau seniors. Their foresight to establish the ShareCare of Leelanau, Inc. Endowment Fund at the Grand Traverse Regional Community Foundation to receive gifts, donations, legacies, and bequests makes this possible. The endowment fund is a permanent fund and the use of the interest and/or dividend earnings from the fund are restricted to develop or extend new services for members. The

current fund balance is \$191,999 and provided a distribution in 2017 of \$7,182. Building the endowment will secure ShareCare's operating fund into the future.

There are a few types of gift options, including endowment giving and current use giving. Of course, we recommend you speak with your financial advisor when considering whether to make a legacy gift to ShareCare.

Why Become a Planned Giving Donor?



Dick and Betsy Wilson joined ShareCare in 2000, and have been active volunteers and supporters. They tell us here, why ShareCare has meant a lot to them over the years. They came to Leelanau because Betsy's family was going to sell their summer cottage and they didn't want to lose it. They both quit their jobs and moved north!

After Betsy retired from her teaching job in Traverse City where they had lived in the wintertime for ten years, they moved to Northport and quickly became involved in ShareCare. Betsy served on the Board from 2001 to 2014, acting as Board President for several of those years, and she continues to serve on committees. Both Dick and Betsy have been involved with direct services to ShareCare's members as Drivers-of-the-Day and as Care Team Volunteers. Their dedication to ShareCare, along with support they received from the staff, Anne Kelly in particular, during serious health issues, lead Dick and Betsy to understand the importance of ShareCare. In an effort to guarantee our continued services to Leelanau County seniors, they have included ShareCare in their estate planning.

"My major consideration for including ShareCare in my estate plan was ShareCare provides security and enriches my life and the lives of many others. My personal experiences prompted me to include ShareCare because the Care Coordinator was with me during my husband David's illness and death."

—Marlis Mann, Charter Member



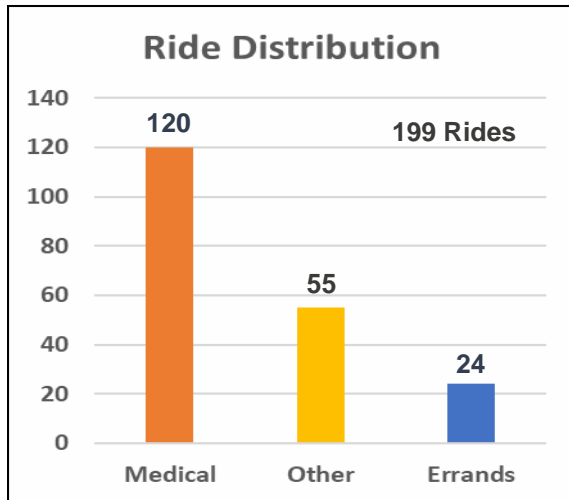
When my husband's trust was set up, our children helped us decide to list ShareCare as a 'remainder' beneficiary in the trust's distribution plan. We believe in the future of ShareCare as an important and much needed 'helping hand' for people who are aging.

ShareCare's nurse was there when my husband most needed professional help and supportive advice. When I think of ShareCare I think of 'peace of mind' and I want to give something back...in the future.

—Barbara Coye, Charter Member

Annual Member Support

Our mission is to help seniors stay in their homes for as long as possible. We do this through care coordination provided by our nurse and the many volunteer services that support ShareCare members. The Drive the Day is the most widely utilized service. ShareCare also loans medical equipment and provides referrals to non-members and offers educational workshops in coordination with Leelanau County Senior Services.



The Value of Transportation Services		
Miles	10,851	\$5,860
Hours	429	\$10,356
Total		\$16,216
Per Ride		\$81.48

The value of a ride cannot be calculated by the cost of gas and mileage alone. ShareCare is providing hours of volunteer time that would be charged to the consumer if it were billed privately.

Many medical procedures require that a patient has a driver for the ride home, and that is something our volunteers can provide.

Care Coordination	
Health Related	123
Family Conference	31
General Discussion	68
Caregiver	30
Chronic Care Management	10
Check In / Home Visits	51
Bereavement	2
Total	315

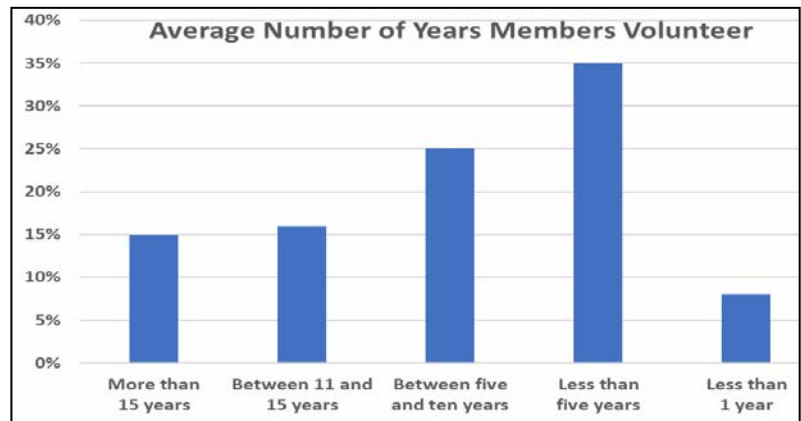
Volunteer Services	
Member Visits	109
Clean-Up	15
Handyman	11
Meals	25
Respite	7
Borrowed Equipment	77
Total	244

Other	
Educational Workshops	5
Fundraisers	12
Total	17

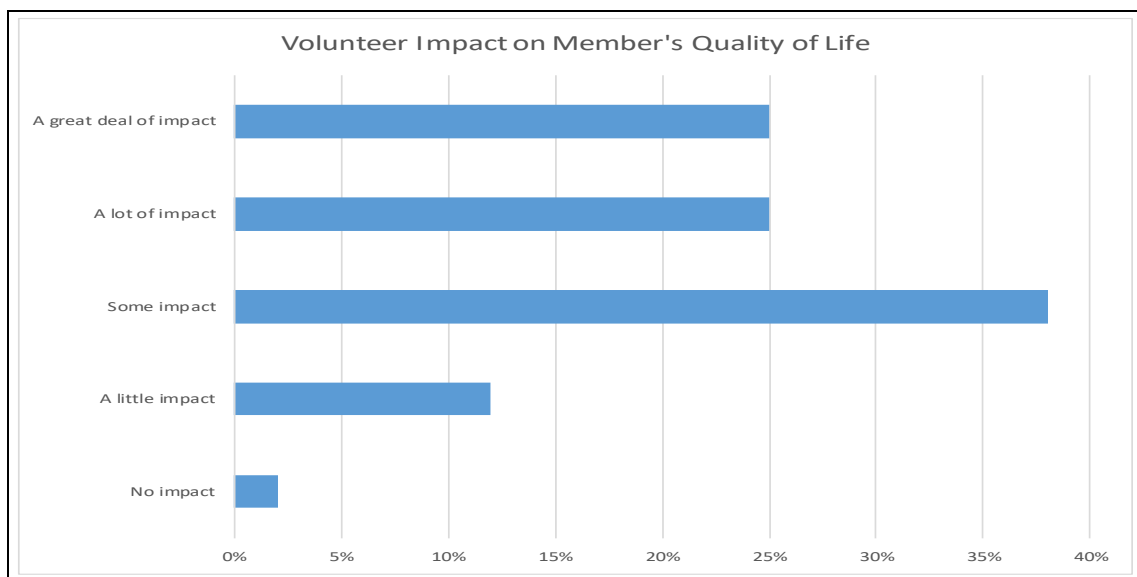
Volunteers

As noted above in member support, ShareCare Volunteers handled 443 service requests last year. That averages to 39 per month. With approximately 70 active volunteers the average number of service requests per volunteer is 6. Of course, some volunteers log more hours than others, but in a typical month 90% of volunteers reported they volunteered between 1-5 hours. In addition to service requests, office helpers log close to 1,000 hours per year helping the office manager keep things running when she is away on vacation, stuffing envelopes and mailing the connector. Thank you! What is even more amazing about the volunteers at ShareCare is our volunteers keep volunteering as seen on the chart below. Fifteen percent have been volunteers for more than 15 years and an additional 15% between 11 and 15 years. With the 25% who have been volunteers for between 5 and ten years, we can say that 50% of our volunteers stay at least five years. Volunteer satisfaction is also very high, with 98% of volunteers believing they are having an impact on the member's quality of life.

Support Hours	
Office Help	254
Organizational Development and Fundraisers	730



A ShareCare Volunteer provides on average 1-5 hours of service per month



Vision for the Future

Care Team Volunteers

In an effort to reconnect with our members we redesigned the regions to make smaller and more manageable neighborhoods. We now have 12 regions and 14 Care Team Volunteers (Teamsters); ideally, we would like two for each region. The CTVs will be in touch throughout the year, and for those members who are more fragile the CTVs will be in close contact with Victoria.

In the first of many workshops, Victoria and Deb provided orientation and training to many of our CTVs. With a lot of information provided by the staff and input from veteran CTVs, it was well received and the CTVs are looking forward to connecting to the members in their new neighborhood.

New Programming in 2018

We have been looking for ways to be more inclusive, to do more for all seniors. This is part of our mission and in our articles of incorporation. We have offered medical equipment to seniors who are not members, made referrals and held several open educational workshops in the past.

In 2017, ShareCare began meeting with several organizations including Leelanau County Senior Services (LCSS), Munson Home Health, and the League of Women Voters Age Friendly Leelanau Committee to examine ways we might work together more efficiently. As we examined senior services delivery in the county, transportation was identified as one need that continued to be unmet, despite improvements with the start of BATA services.

ShareCare began exploring the expansion of its already successful transportation services to include all seniors living in Leelanau County. We are excited to announce a Senior Ride Program launching in May in Suttons Bay that will include a limited transportation membership that will allow the member to purchase a roundtrip ride for \$10. Several organizations and LCSS have committed to sponsoring rides for individuals. We believe this is a great opportunity to provide a needed service to all seniors in the county and to gain recognition for ShareCare that may increase membership and open up additional funding streams, including donations and grants. Of course, it will require more drivers and we are working on recruiting those. Overall, the goal of this effort is to transition ShareCare slowly to a nonprofit that can accept gifts as any nonprofit does because of its good work in helping vulnerable populations, in this case Leelanau County seniors.

A lot has changed in 25 years, and ShareCare must change too. Who would have imagined 25 years ago that Munson Home Health would be putting Tele-health pads in patients' homes and skyping medical staff in? Transportation was recently identified as a need, but self-driving cars could soon be picking us up for appointments. ShareCare still can offer the most important piece of all, which is keeping seniors healthy and well and preventing social isolation. The sense of community we provide, our tagline, "neighbor helping neighbor" makes us relevant, at least until artificial intelligence starts fulfilling the need for companionship.... Alexa?

Staff



VICTORIA MAGGIO, RN, moved to Leelanau County in 2000 and has worked in a Family Practice/Internal Medicine office, in Cardiology, and founded her own business “Whatever It Takes” doing private duty nursing/caregiving. Victoria provides care coordination for ShareCare members and manages volunteers who deliver services. Victoria enjoys running, gardening, cooking, and most of all, spending time with family and friends.



JULIE TARR, ED.D. Executive Director is into her second year at ShareCare and excited about the launch of the new senior ride services and age-friendly Leelanau.

DEB WETHERBEE, Office Manager, has been with ShareCare for almost 16 years. She is truly the glue to our organization!

Board of Directors

Barbara Abbott
Susan Cobb
Larry Coppard
Don Frerichs
Larry Hauser
Patricia McGee
Robert Olson
Lisa Peacock
Tim Wade
Angela Wills

Thank you to our Donors

SHARECARE LEGACY SOCIETY (SUPPORT FROM PLANNED GIVING)

Martha Baker
Carol Bawden
Barbara Coye
Kalin and Phia Johnson
Mary Lyons
Marlis Mann
Gwen and James Rich
Ben and Nancy Tefertiller
Betsy Wilson

SC NEIGHBORS FOREVER (GIVEN CUMULATIVELY \$5,000+)

\$100,000+

Sally Reahard
Paula and Gordon Robertson

\$50,000-\$99,999

Bank of America
Gwen and James Rich
Jane and H K John Shannahan

\$20,000-\$49,999

Mary Lyons
The Homestead
W K Kellogg Foundation
Arleen and James Rae

\$10,000-\$19,999

Anonymous
Atwill Memorial Chapel
Barb and Robert Coye
Becky and David Finger
Eunice and Eben Finger
Anne Firestone Ball and John Ball
Janice and John Fisher
Carol and James Frederick
Marlis Mann (and David) and Thomas Skinner (and Beth)
Harry Nichols

\$5,000-\$9,999

Sue and George Basta
Barbara Coye
Molly Joel Coye
Annette Deibel
Grand Traverse Regional
Community Foundation
Phia and Kalin Johnson
Elizabeth and William Peace
Samaritan's Closet
Virginia and Robert Willard
Betsy and Richard Wilson

CIRCLE OF FRIENDS (ANNUAL COMMITMENT \$500+)

Susan Ager and Larry Coppard
Caroline Brady
Nina and William Collins
Barbara Coye
Darlene Doorlag
Paula and Norbert Gits
Phia and Kalin Johnson
Betty and Kenneth Krantz
Suzanne and Jim Landes
Marlis Mann and Thomas Skinner
Kathryn and Michael May
Joan Montezmolo
Elizabeth and William Peace

Kent and Sarah Shoemaker
Mary and Ron Tonneberger
Angela and George Wills
Betsy and Richard Wilson

SC NEIGHBORS FOREVER: \$5000+

Jane and H K John Shannahan

SC SUSTAINER \$1000-\$4999

Charles Hall Construction
Atwill Memorial Chapel
Joan Montezmolo
Sarah and Kent Shoemaker

SC VISIONARY \$500-\$999

Suzanne and James Landes
Cynthia and Michael Quinkert
Barbara Coye
Ethel Wills
Sophia and Kalin Johnson
Karl and Shirley Kristen
Betsy and Richard Wilson
Mary and Ronald Tonneberger
Marlis Mann and Thomas Skinner
John Ball
Patricia and David Barrons
Nina and William Collins
Susan Ager and Larry Coppard
Darlene Doorlag
Susan Finke
Mollie and Chuck Hall
Natalie and Theodore Lanham
Kathryn and Michael May
William Thomas
Glenna Winnie

SC SPONSOR \$300-\$499

Linda Emmert
Sylvia and John Koschara
Pauline McClure
Marguerite Meeker
Grotberg-Rubner Family
Richard Grout

SC PATRON \$200-\$299

Mary Ann and Reuben Chapman
Barbara and Karl Marsh
Flora and Stewart Newblatt
June and Edson Sheppard
South Bay Partners
Janet and Chuck Dickerson
Nancy and Joe Belton
Isabelle and Richard Firestone
Susan and Lee Lane
Susan and Richard Lang
Jean and Jerry Muir
Charlotte and Jim Price
Karen and Timothy Wade

SC SUPPORTER \$100-\$199

Benevity Foundation
Jennie Berkson and David Edelstein
Bonnie Nescott and Timothy Barr
Kathleen and Jack Snedeker
Judith Egeler
Sylvia and Thomas Guback
Darlene and Thomas Hackney
Cass Hough
Barbara Krause
Ruth and Lawrence Lezotte

Helga Meeker
Jill and Lee Foerster
Marguerite and William Muempfer
William Wells
Angela and George Wills
Sarah Brooks-Miller
Anita and Porter Abbott
Caroline Brady
Randy Brown
Jo and Dennis Caruso
Susan and Robert Cobb
Katherine Draper
Nancy Freeman
Marlene and Jack Gossett
Nancy and Thomas Gross
Sheridan and David Hadley
Elisabeth Heikel
Ann Hotchkiss
Virginia and David Maharry
Karen Maskill
Marshall Matz
Lois Bahle and Larry Mawby
JoAnne McCallum
Irmgard McKinney
Leilani and Larry Napp L
Sandra and Robert Olson
Kathryn Omoto
Ellen and Robert Pisor
Roberta Poor
Mary and John Scott
Marjorie Stapleton
Adwoa and William Steel
John Taggart
Patricia Vingsness
Marion and Robert Wyatt

SC FRIEND \$1-\$99

Barbara Abbott and Larry Hauser
Ann and Doug McInnis
Portage Police Officers
Association
Steve Sonsky
Helen and Nicholas Sica
Suzanne and William Hoff
Ann Nichols
Marilyn and Edward Sichler
Katherine and Thomas Angus
B.B and R.F. Benstein
Norma and Donald
Blumenschine
Tema Bombeck
Donna Bonifield
Lucille and Aus Brooks
Joanne and Keith Burnham
Carol Bawden and Scott Craig
Treva De Jong
Gretchen and Thomas Dunfee
Gina and John Erb
Anne and Andrew Ford
Sharon and John Goodwin
Susan and John Harrison
Geoffrey Hayes
Jean and Clarence Heerema
Johanna Herring
Thea and Ray Kellogg
Judy and Dennis Kuenzer
Little Garden Club
Alice Littlefield
John and Jeanne Manganaro
Geneva McClintock
Kanda and Harold McKee

Ellen and Jim McLean
Family Molinoff
Mary Moore
Anita and Don Myers
Christina Naski
Peggy and Donald Ramsdell
Julie Sanco
Mary Schnipper
Gretchen Sprout
Marilyn Walters
Carole and Ira Wasserman
Anne Kelly
Steve Gilbreath
Mary Hacker
JoAnn Sahs
Bill and Julie Salter
Mary Sutton
Jean and John Humble
Jane Odell
Alison and Conrad Heins
Sally Booth
Marilyn and Bob Bura
Nancy Elifritz
Pamela and David Goran
John Hoppin
Cara and Alan Jones
Ellen and Barry Keatley
Karen and Gary Klingenberg
Vina and Phillip Mikesell
John and Carolyn Rentenbach
Katherine Shutts
Ashlie Stapleton
Judy and Jon Walter
Amazon Smile
Paul Gard
Helen Shiley
Judy and John Smart
Erika Von Voigtlander
George Barbee
Judith Leece
Patricia and James Begin
Caroline and Michael Danaher
Nancy and James Mogle

In Honor Of

Mary Dietrich
Barbara Coye

Thomas and Jane Evans
Edward and Marilyn Sichler

Anne Kelly
John and Sylvia Koschara
Kent and Sarah Shoemaker
Jon and Judy Walter

Debra Wetherbee
Kent and Sarah Shoemaker

Mike Sinclair
Ira and Carole Wasserman

In Memory Of

Joan Buchman
Anne Kelly

Hugh Brown
Randy Brown

Alice Hauske
Katherine Draper

John Cermak
Judith Egeler
Geoffrey Hayes
Cara and Alan Jones
Ellen and Barry Keatley
Karen and Gary Klingenberg
Judy and Dennis Kuenzer
John and Manganaro
Leilani and Larry Napp
Christina Naski
Portage Police Officers Assoc.
Mary and John Scott
Katherine Shutts
John Taggart

Robert Doorlag
Darlene Doorlag

Eben Finger
Barbara Coye
Suzanne and William Hoff
Jean and John Humble
Sophia and Kalin Johnson
Helen Shiley
Ethel Wills
Grotberg-Rubner Families

Eben and Eunice Finger
David and Becky Finger

James Frederick
Lois Bahle and Larry Mawby
Judith Egeler
Nancy Elifritz
Anne Kelly
Ethel Wills
Marion and Robert Wyatt

Donald Hacker
Marilyn and Bob Bura
Sharon and John Goodwin
Marshall Matz
Lois Bahle and Larry Mawby
Mary Lou Moore
June and Edson Sheppard
Marjorie Stapleton
Mary Alice Sutton
Marilyn Walters
Betsy and Richard Wilson

Vina Mikesell
Barbara Abbott and Larry Hauser
Jennie Berkson and David Edelstein
Tema Bombeck
Donna Bonifield
Lucille and Aus Brooks
Jo and Dennis Caruso
Gretchen and Thomas Dunfee
Judith Egeler
Gina and John Erb
Anne and Andrew Ford
Pamela and David Goran
Marlene and Jack Gossett
Richard Grout
Sheridan and David Hadley
Susan and John Harrison
Johanna Herring
Suzanne and William Hoff
John Hoppin
Sophia and Kalin Johnson

Thea and Ray Kellogg
Barbara Krause
Susan and Richard Lang
Alice Littlefield
Virginia and David Maharry
Kathryn and Michael May
Irmgard McKinney
Molinoff Family
Charlotte and Jim Price
Peggy and Donald Ramsdell
JoAnn Sahs
Julie Sanco
Mary and John Scott
June and Edson Sheppard
Kathleen and Jack Snedeker
Mary and Ronald Tonneberger
Ethel Wills

Jean Muir
Caroline Brady
Charles Hall Construction
Susan Finke
Mollie and Chuck Hall
Marguerite Meeker
Mary Schnipper
Kathleen and Jack Snedeker
South Bay Partners
Gretchen Sprout
Ashlie Stapleton
Adwoa and William Steel
Little Garden Club

Elizabeth Peace
June and Edson Sheppard
Roberta Poor
Julie Sanco

Vi Reddicliffe
R.F. and B.B. Benstein
Steve Reddicliffe
Carolyn and John Rentenbach
Steve Sonsky
Cass Hough

David Sprout
Gretchen Sprout

Virginia Thomas
Vina and Phillip Mikesell
Mary and Ronald Tonneberger
Betsy and Richard Wilson

James Vingsness
Pat Vingsness

L James Wetherbee
Kanda and Harold McKee
Ethel Wills

Robert Willard
Barb Coye
Carol Bawden and Scott Craig
Sally Booth
Mary and Robert Brown
Barbara Coye
Kalin and Sophia Johnson
Marlis Mann and Thomas Skinner
Kathryn Omoto