

Aging-In-Place Specialists



Suite Additions Basic Information:

- Founded in 2013
- Focus on Residential Remodeling
- Specialties: Aging-In-Place & Room Additions

Aging-In-Place Specialists



Tim Jorgens – Owner

- Started in construction in 1996
- Opened Suite Additions in 2013
- Certified Aging-In-Place Specialist (CAPS)

Aging-In-Place Specialists



Kim Ford – Designer and Project Manager

- Joined Suite Additions in 2019
- B.S. in Interior Design from Oregon State
- Accredited Interior Designer (NCIDQ #32842)

Aging-In-Place Specialists



The majority of Americans
over the age of 45 want to

continue living in a familiar environment

throughout ~~your~~ maturing years.
OUR

Aging-In-Place Specialists



According to AARP,

Maturing home-owners prefer to age-in-place,
which means living in your home

- Safely
- Independently
- Comfortably

Aging-In-Place Specialists



Today's Topics

- Discuss the top (3) Areas of Concern within the home
- Address how to solve the challenges in these areas
- Review the range of costs of the solutions
- Cost differences – compared to retirement facilities
- Home Assessments

Aging-In-Place Specialists

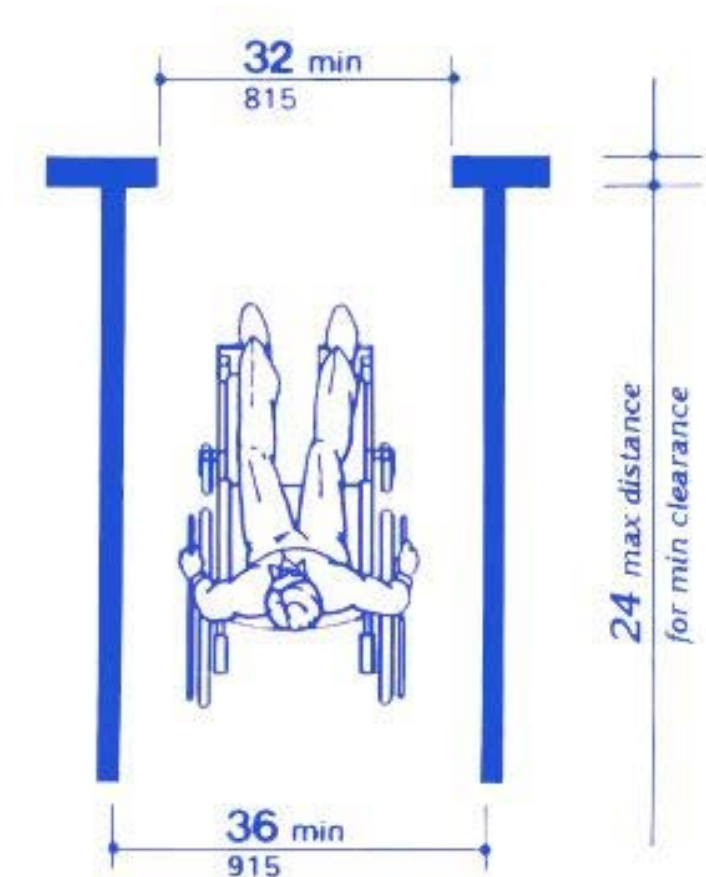


- Top 3 Areas of Concern in a home:
 - Doorways
 - Stairs
 - Bathrooms

Doorways

Challenges:

- Typically need to be wider
- Standard 24"-30" widths
- Wheelchairs need at least 32"

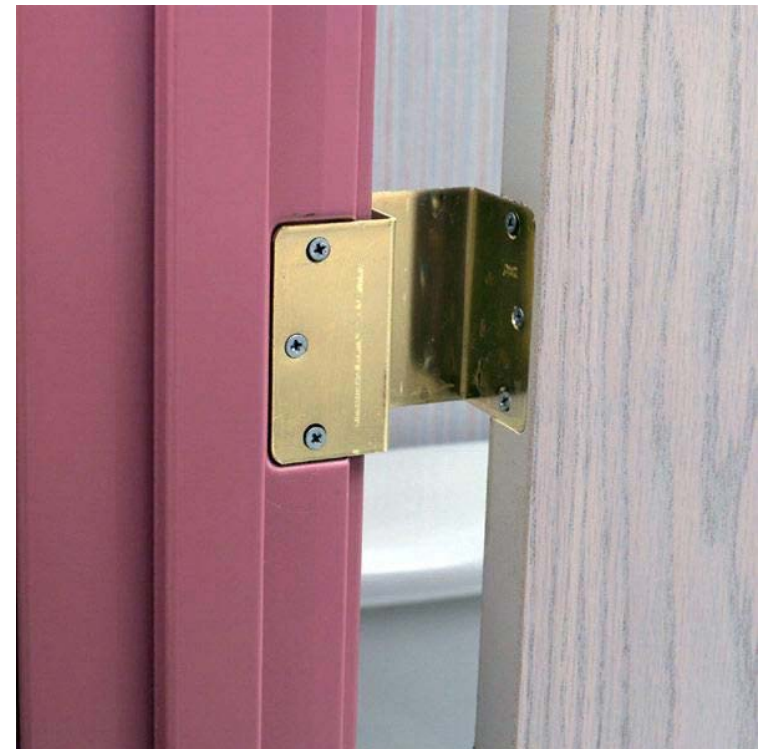


Doorways



Solutions:

- Install wider door and frame
 - Install a barn door
 - Reverse the door swing
 - Install upgraded door hinges
- *Cost Range: \$300 to \$2,000

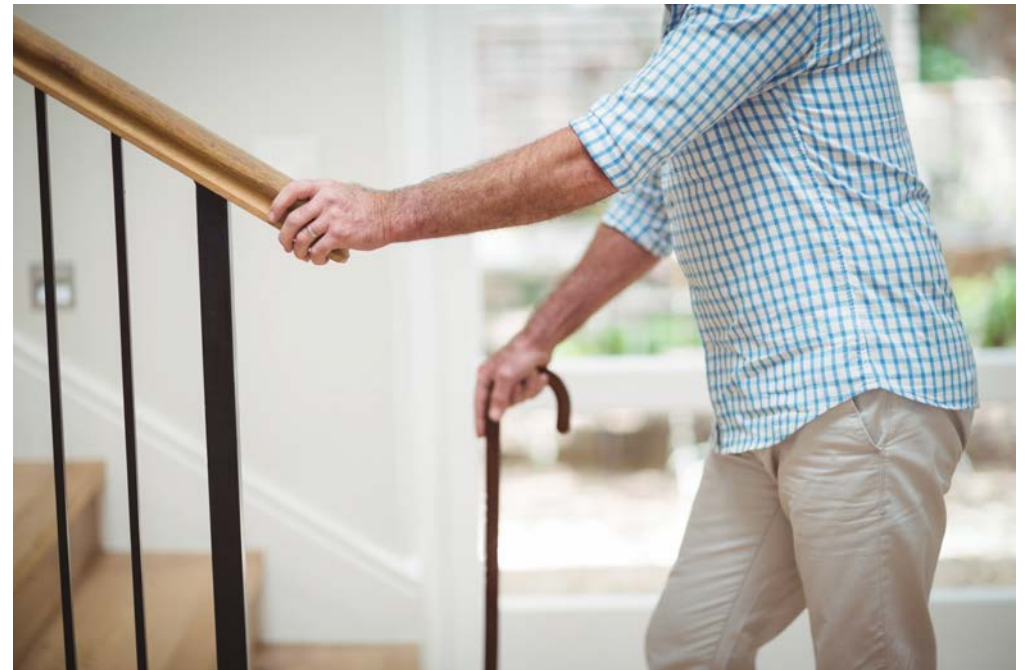


Stairs



Challenges:

- Hazardous with less balance
- Increased risk of falling
- Reduced independence



Stairs



Solutions:

- Additional handrails
- Lifts/Elevators
- Ramps (if space allows)
- Relocation of rooms to main level of home

*Cost Range: \$1,000 to \$10,000 to \$50,000



Bathrooms



Challenges:

- Adequate space for assistance
- Turning/maneuvering
- Toilet & Sink access
- Shower accessibility

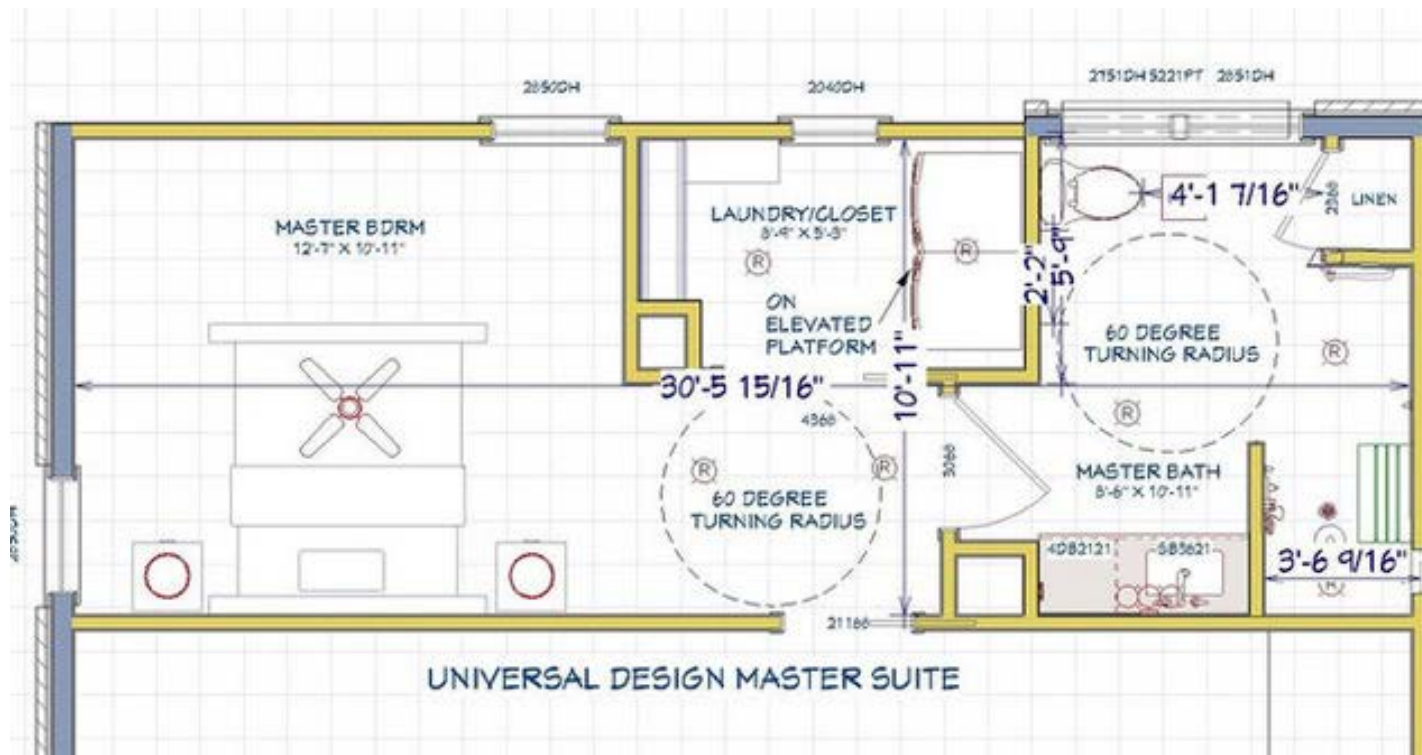


Bathrooms



Solutions:

- Gain space from an adjacent room
- Zero barrier shower
- Remove bathtub
- Open sink cabinet

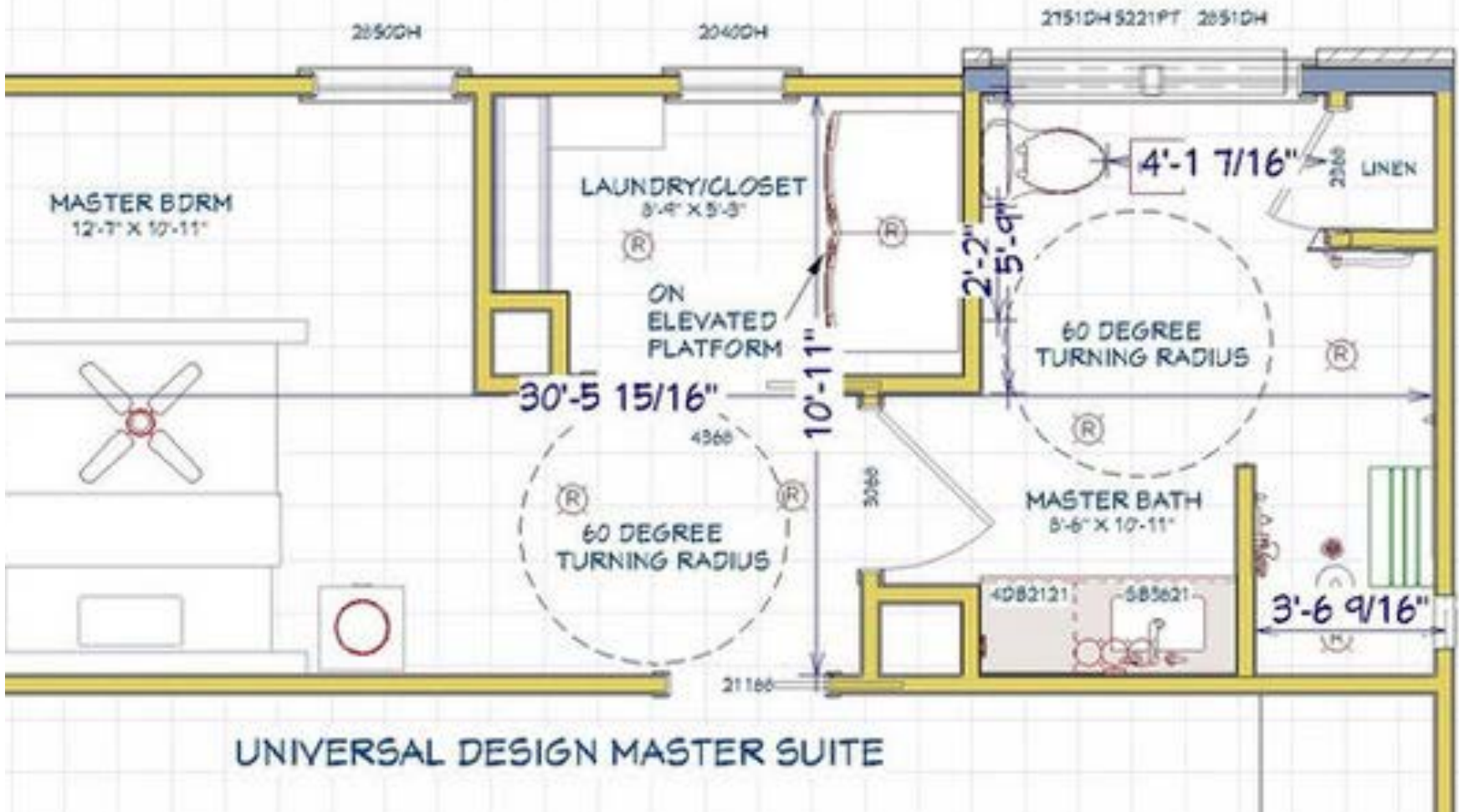


Bathrooms



Solutions:

*Cost Range: \$10,000 to \$50,000



Cost Differences



Retirement facilities

- Independent living
 - \$4,200 / month (2 people)
 - \$50,400 / year
- Assisted Living
 - (Much More)

Cost Differences

Scenario 1

- If project is \$4,000
 - Ramp in Garage
 - Widen 2 doors
- Equivalent to 1 month at retirement facility



Cost Differences

Scenario 2

- If project is \$25,000
 - Replace tub with roll-in shower
 - Extensive ramps
 - Widen 4 doors

- Equivalent to 6 months at retirement facility



Cost Differences

Scenario 3



- If project is \$100,000
 - Create new Master Suite on main floor
 - Bedroom
 - Bathroom
 - All ADA Accessible
- Equivalent to 24 months at retirement facility

Home Assessments

What does your house need?

- Initial 1-hour consultation
 - FREE
- Aging-In-Place Home Assessment
 - Identify challenges via checklist
 - Provide written recommendations for improvements
 - Cost estimates for recommended improvements
 - \$475
 - Credited to project costs



Contact Info:

Tim Jorgens

Tim@Suite-Additions.com

503-621-2122

Kim Ford

Kim@Suite-Additions.com

503-333-8852

www.Suite-Additions.com

