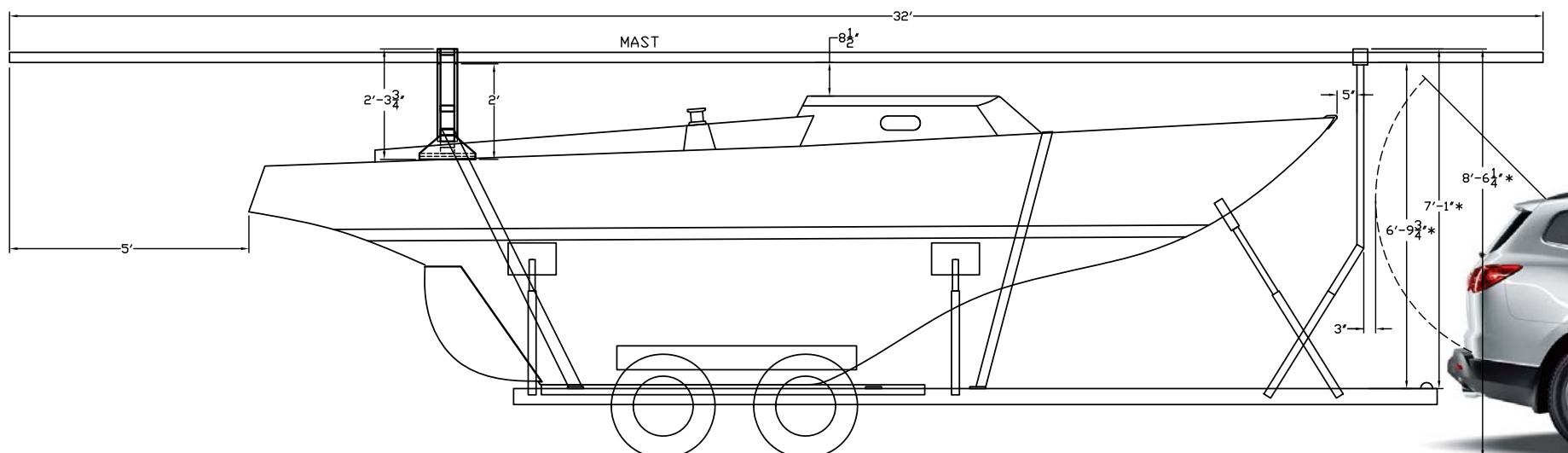



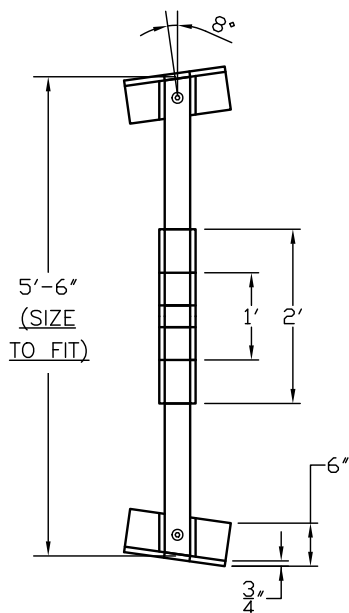
* NOTE: VERTICLE MAST CLEARANCE
DIMS APPROXIMATE. TO BE VERIFIED



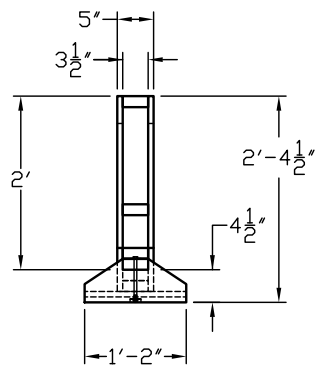
NOTE:
THIS HARDWARE LAYOUT IS FOR ENSIGN #1484. THE DESIGN IS GLEANED FROM APPROXIMATELY A DOZEN DIFFERENT ENSIGN 22'S AND PERSONAL OBSERVATIONS. IT IS PUBLISHED HERE FOR INFORMATIONAL PURPOSES ONLY. PLEASE FEEL FREE TO USE AS YOU SEE FIT AND FEED BACK ANY DESIGN COMMENTS OR SUGGESTED CHANGES TO THE GROUP.

2	01-05-2017	ADD CLEARANCE MEASUREMENTS & STRAP END PLATES	EM	REM	REM	REM	MR
1	11-14-2016	AS-BUILT	EM	REM	REM	REM	MR
0	11-06-2016	INITIAL ISSUE	EM	REM	REM	REM	MR
REV	DATE	REVISION DESCRIPTION	DWN	DSN	ENG	CHK	SCALE

		ENSIGN 22 "ERASER" Mast Crutch — General Arrangement		
SIZE	DWG. No.	E22-05.01		REV.
A				2
SCALE	N.T.S.		SHEET No.	1 OF 3



AFT MAST CRUTCH
-TOP VIEW-



AFT MAST CRUTCH
-END VIEW-

MATERIALS REQUIRED - AFT MAST CRUTCH

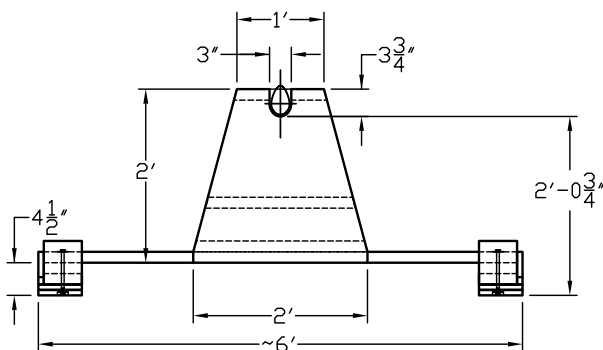
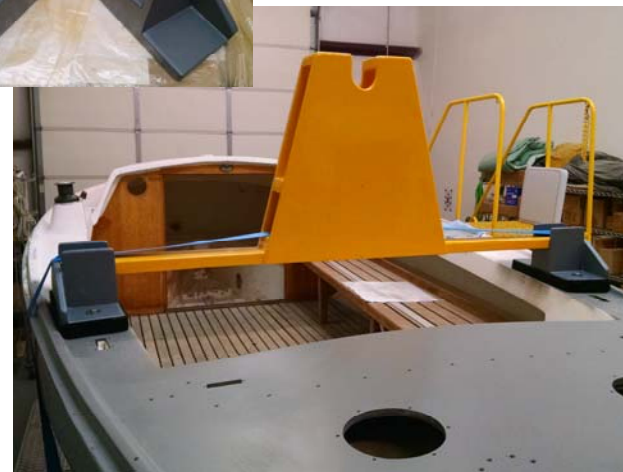
3/4 INCH PLYWOOD: 16 SQ FEET
2 X 4 INCH CEDAR = 16 FEET

WOOD BREAKDOWN:
4, 2 FT X 2 FT PLYWOOD SHEETS
2, 8 FT LONG 2 X 4'S

FASTENERS:
WOOD SCREWS, #8 X 2-1/2 IN. PHILIPS HEAD (AS REQ)
HEX BOLT, SS 316, 3/8"-16 X 6" (2 REQ)
HEX NUT, 3/8-16, SS (2 REQ)
FLAT FENDER WASHER, SS, 3/8" X 1-1/2" DIA (4 REQ)
LOCK WASHER, SS, 3/8" (2 REQ)

WATERPROOF CONSTRUCTION ADHESIVE (LIQUID NAILS)


PAINT:
FLAT GRAY PRIMER
SAFETY YELLOW ENAMEL FINISH

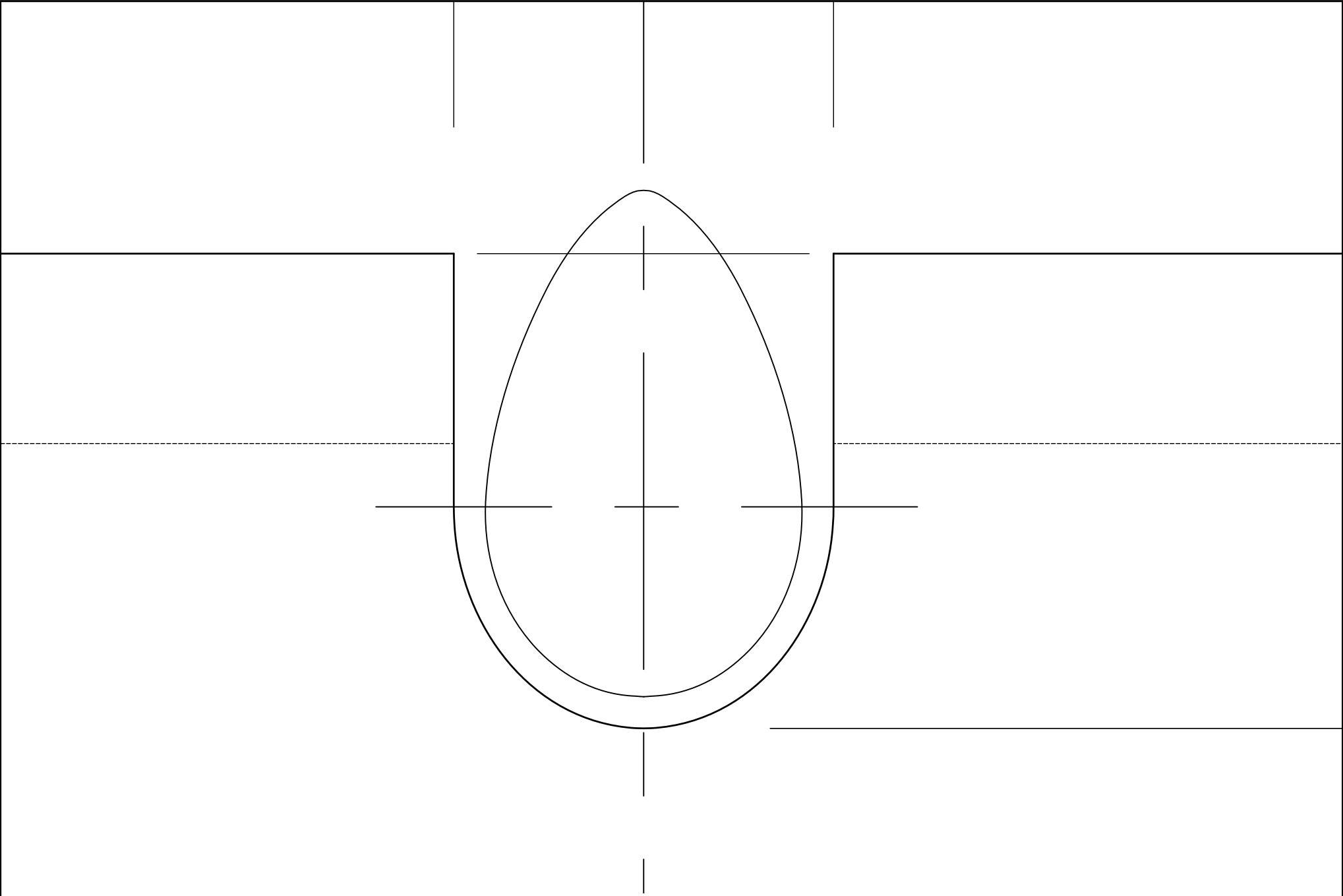


AFT MAST CRUTCH
-SIDE VIEW-

NOTE:
THIS HARDWARE LAYOUT IS FOR ENSIGN #1484. THE DESIGN IS GLEANED FROM APPROXIMATELY A DOZEN DIFFERENT ENSIGN 22'S AND PERSONAL OBSERVATIONS. IT IS PUBLISHED HERE FOR INFORMATIONAL PURPOSES ONLY. PLEASE FEEL FREE TO USE AS YOU SEE FIT AND FEED BACK ANY DESIGN COMMENTS OR SUGGESTED CHANGES TO THE GROUP.


2	01-05-2017	ADDED STRAP-CAPTURE END PLATES	EM	REM	REM	MR
1	11-14-2016	AS-BUILT	EM	REM	REM	MR
0	11-06-2016	INITIAL ISSUE	EM	REM	REM	MR
REV	DATE	REVISION DESCRIPTION	DWN	DSN	ENG	CHK

		ENSIGN 22 "ERASER"	
		Mast Crutch Details	
SIZE	DWG. No.	REV.	
A	E22-05.01	2	
SCALE	N.T.S.	SHEET No. 2 OF 3	



NOTE:
THIS HARDWARE LAYOUT IS FOR ENSIGN #1484. THE DESIGN IS GLEANED FROM APPROXIMATELY A DOZEN DIFFERENT ENSIGN 22'S AND PERSONAL OBSERVATIONS. IT IS PUBLISHED HERE FOR INFORMATIONAL PURPOSES ONLY. PLEASE FEEL FREE TO USE AS YOU SEE FIT AND FEED BACK ANY DESIGN COMMENTS OR SUGGESTED CHANGES TO THE GROUP.

0	11-14-2016	INITIAL ISSUE	EM	REM	REM	REM	MR
REV	DATE	REVISION DESCRIPTION	DWN	DSN	ENG	CHK	

	ENSIGN 22 "ERASER"	
	Mast Crutch – Mast Cutout Template	
SIZE A	DWG. No. E22-05.01	REV. 0
SCALE FULL SIZE		SHEET No. 3 OF 3