

TARTAN 3500 OWNER'S MANUAL INDEX

1.0 INTRODUCTION

2.0 LIST OF ILLUSTRATIONS AND TABLES

3.0 CONSTRUCTION

- 3.1 Hull
- 3.2 Deck
- 3.3 Hull / Deck Joint
- 3.4 Rudder & Steering
- 3.5 Ballast

4.0 RIGGING

- 4.1 General Description
- 4.2 Spars
- 4.3 Tuning at the Dock
- 4.4 Tuning While Sailing

5.0 FUELSYSTEM

- 5.1 Fuel Tank
- 5.2 Fueling
- 5.3 Fuel Grade

6.0 POWER PLANT AND TRANSMISSION OF POWER

- 6.1 Engine
- 6.2 Transmission
- 6.25 Saildrive
- 6.3 Propeller Shaft
- 6.4 Shaft Alignment
- 6.5 Stuffing Box
- 6.6 Propellers
- 6.7 Removal of Propellers
- 6.8 Installation of Propellers
- 6.9 Propeller Alignment Check
- 6.10 Exhaust System

7.0 CONTROLS

- 7.1 General
- 7.2 Starting and Operating the Engine
- 7.3 Engine Shut Down

2.0 LIST OF ILLUSTRATIONS AND TABLES

Figures

Sailplan
Standard Deck Layout
Accommodation Plan
Major Mechanical Locations
Electrical Conduit Layout
Interior Lighting Plan
110 VAC Layout
DC Wiring Diagram
Freshwater System
Black Water System
Gray Water System

Tables

- 1 Sailmaker's specifications
- 2 Forestay Dimension for Harken Roller Furling

Again, this manual is intended to help you to know your new Tartan Yacht. It is most important to familiarize yourself thoroughly with all aspects of operating and maintaining your yacht in a safe and efficient manner. Read your manual carefully as well as the booklets supplied by the manufacturers of the components. If any questions arise for which you can not find an answer, your Tartan dealer will be pleased to help you.

It is Company policy that the Tartan line of yachts is continually upgraded and improved. Thus, you may find your yacht equipped with gear different from that shown in your manual. Any new piece of equipment will be in all cases equal to or better than, its predecessor.

On taking delivery of your yacht, be sure to read and understand the Tartan warranty. Complete the warranty card or the change of ownership card and return it to Tartan immediately.

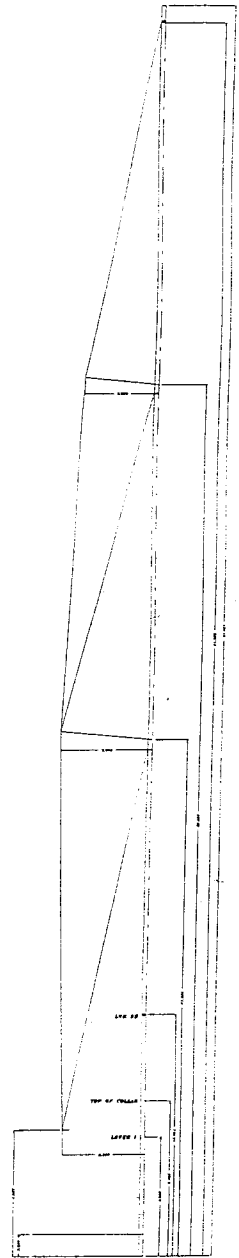
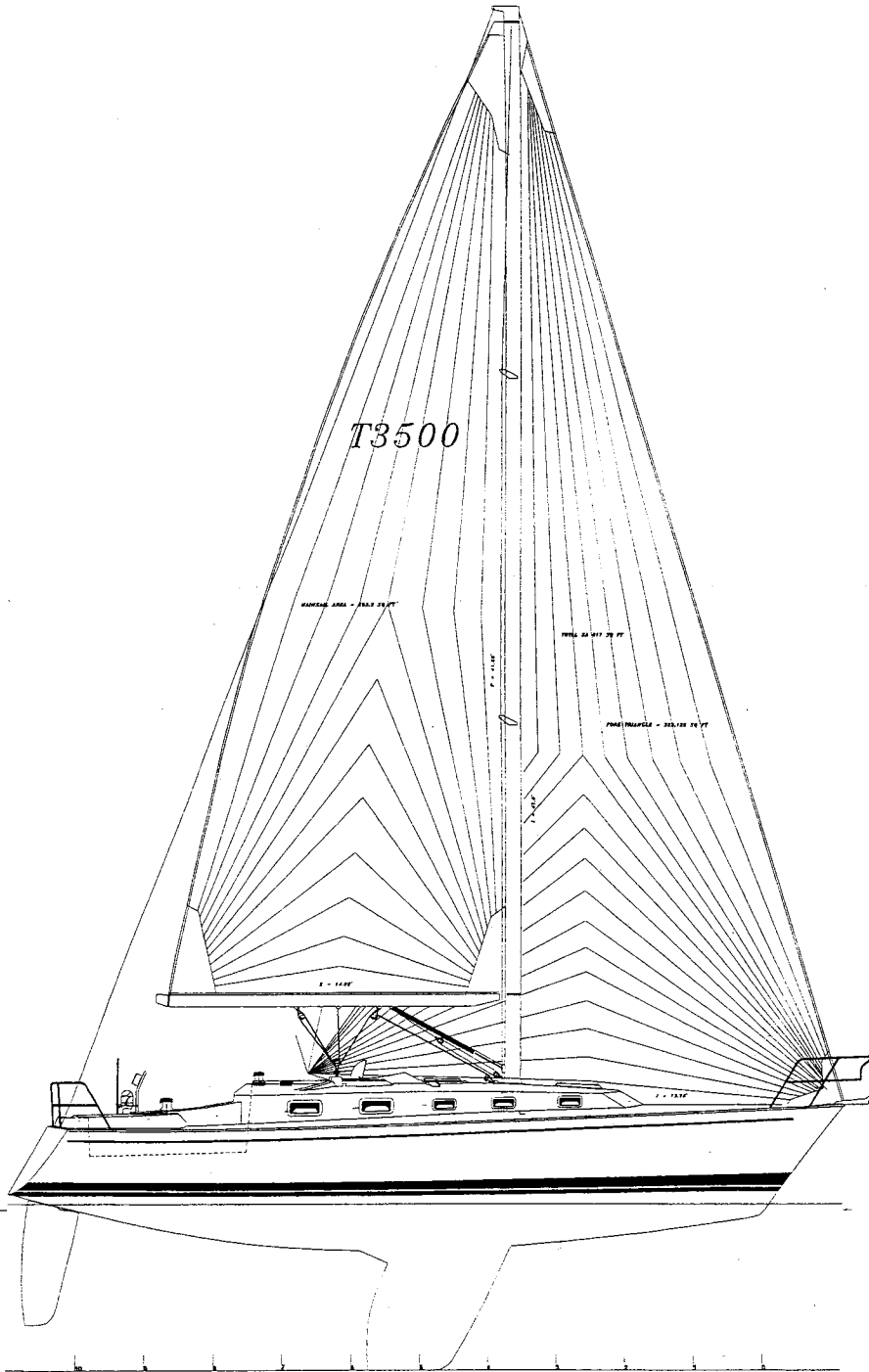
If you are a seasoned sailor much of the manual may be old news but if this is your first boat, we hope this will prove useful. We know that you will have many satisfying and happy hours of sailing in your Tartan Yacht.

Should you need to contact Tartan Yachts please use the following addresses and numbers:

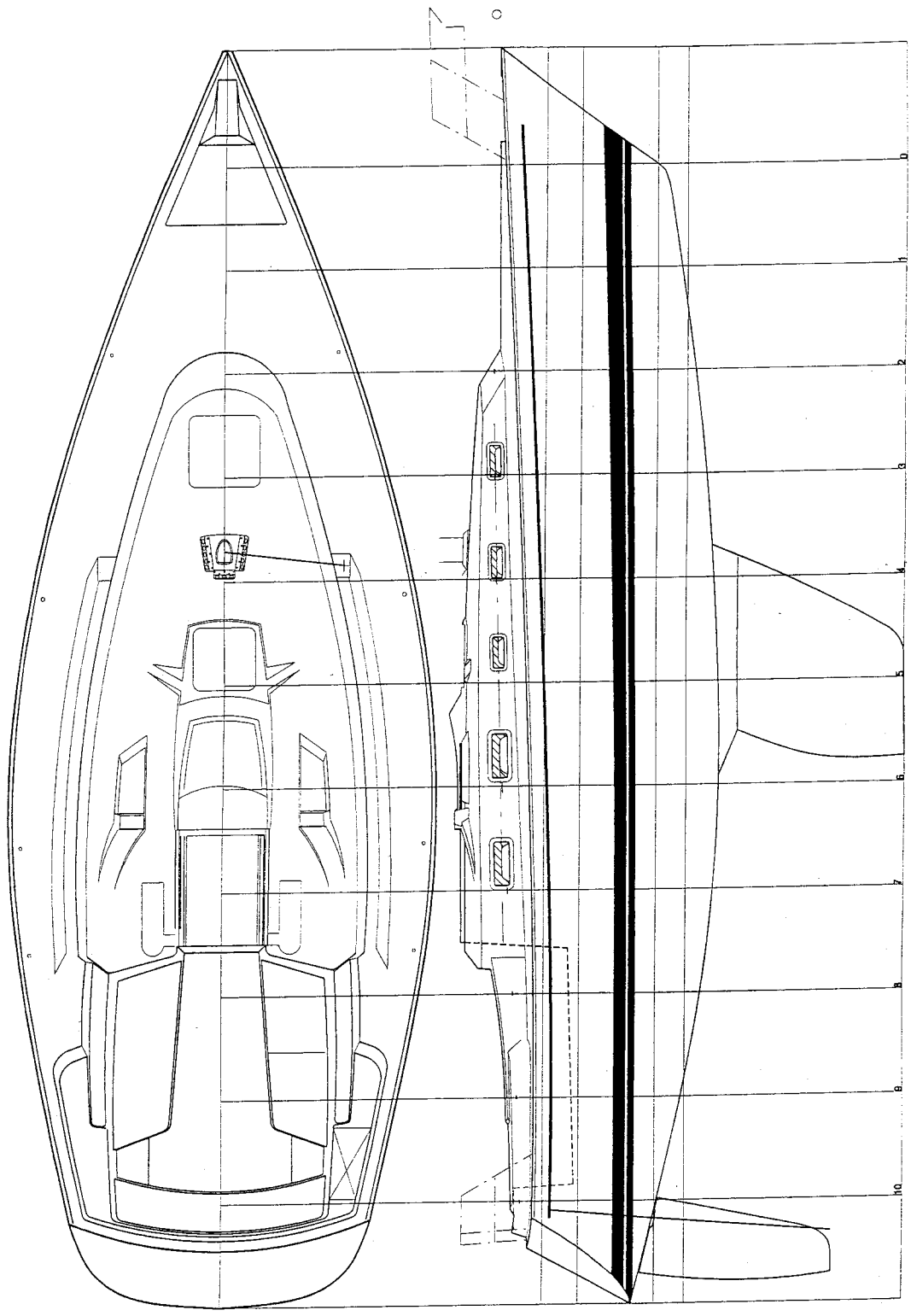
Tartan Yachts
Customer Service
1920 Fairport Nursery Road
Fairport Harbor, OH 44077
Phone: 440-354-3111
Fax: 440-354-6162
Websites: www.tartanyachts.com and www.tartanparts.com

We would like to take this opportunity to thank you for choosing Tartan Yachts and we wish you good sailing.

TARTAN 3500

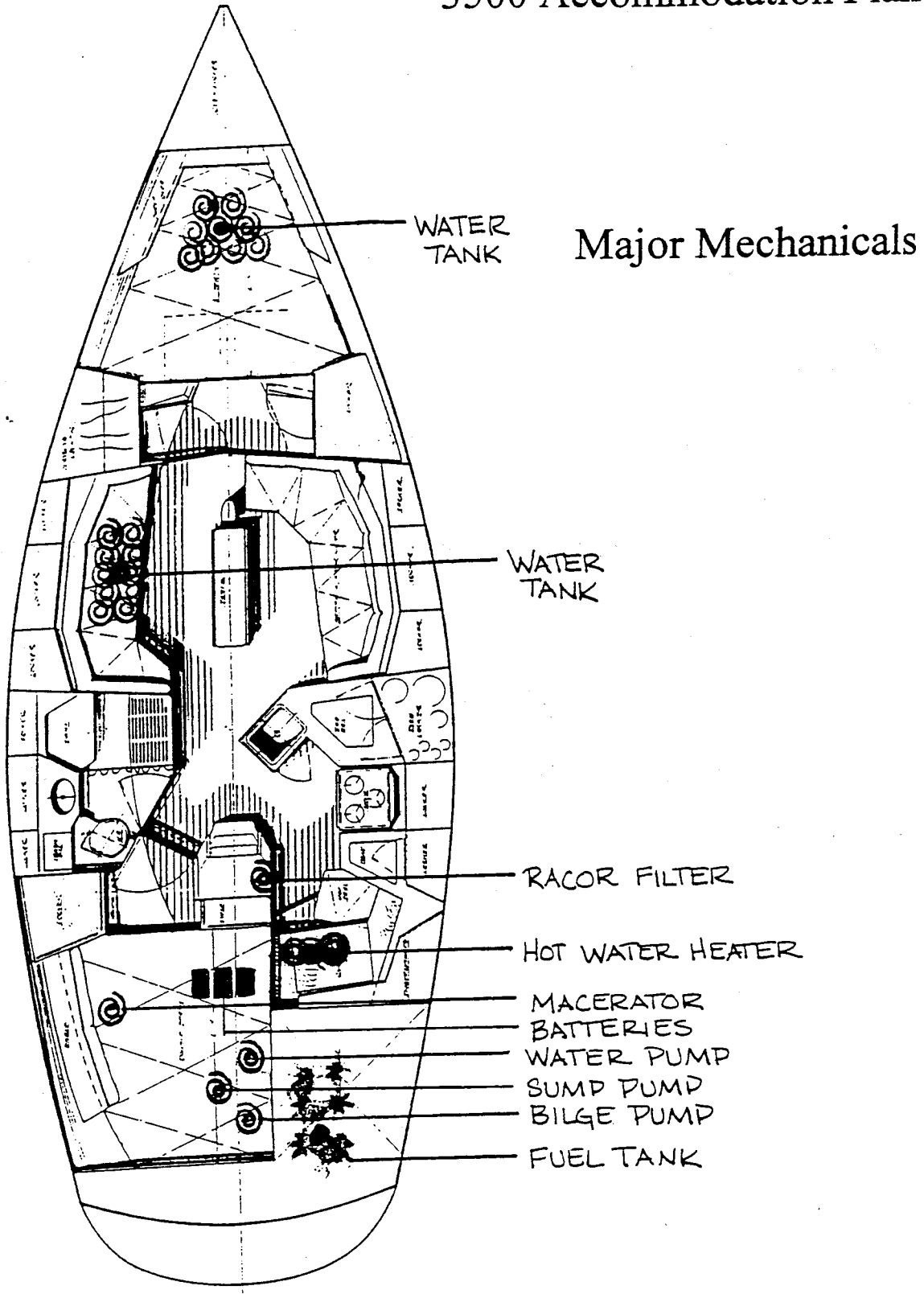


TARTAN 3500

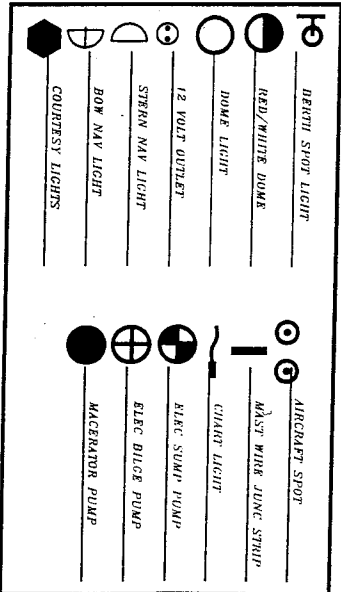
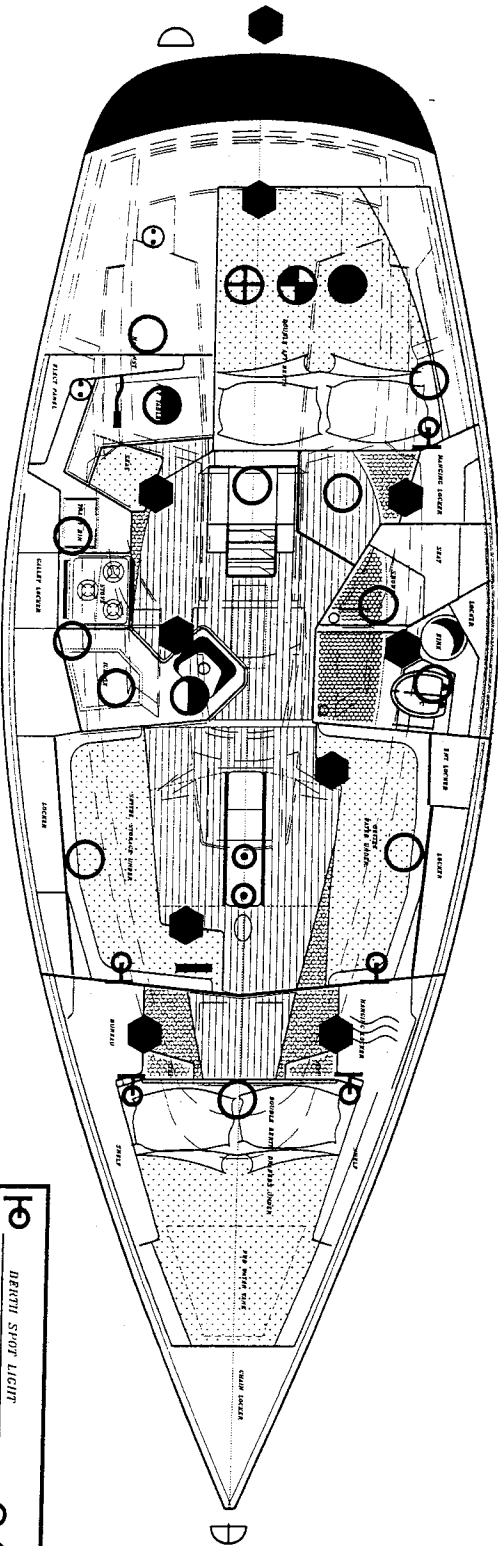


THE UNIVERSITY OF THE STATE OF NEW YORK
THE STATE ENGINEERING EXAMINING BOARD
DESIGN OF A
BASED DECK BOAT
JANUARY 1958

3500 Accommodation Plan



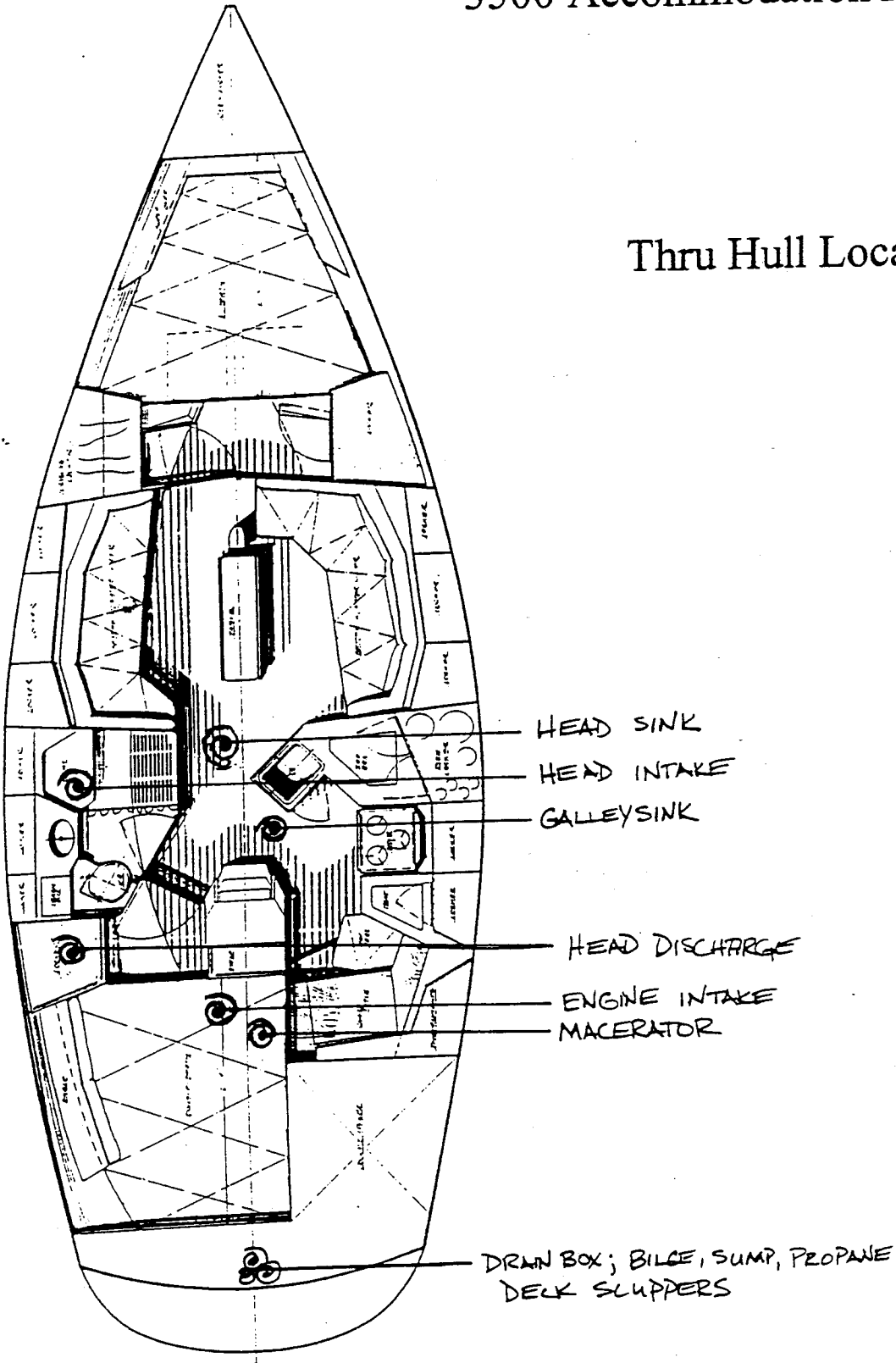
TARTAN 3500

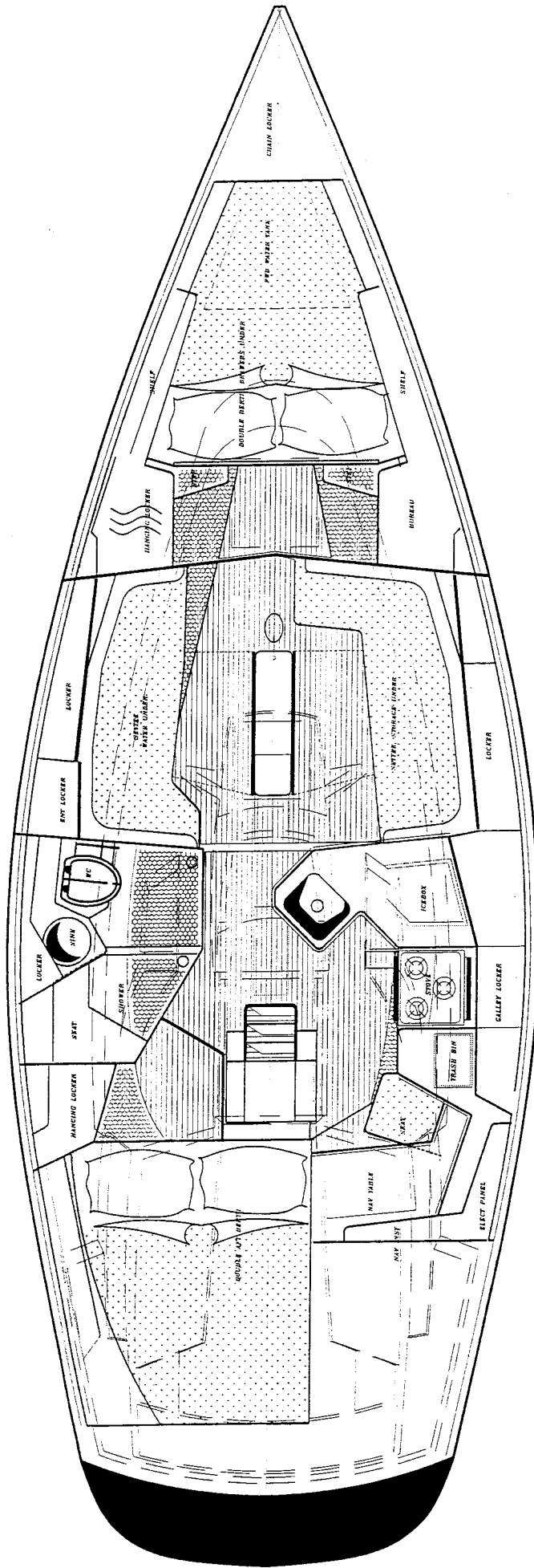


TARTAN 3500
 LIGHTING AND DC ACCESS
 DRWG NO 011 35 001 JUNE 10, 99 T.J.
 TARTAN YACHTS, 1920 FAIRPORT NURSERY RD., FAIRPORT, OHIO 44077

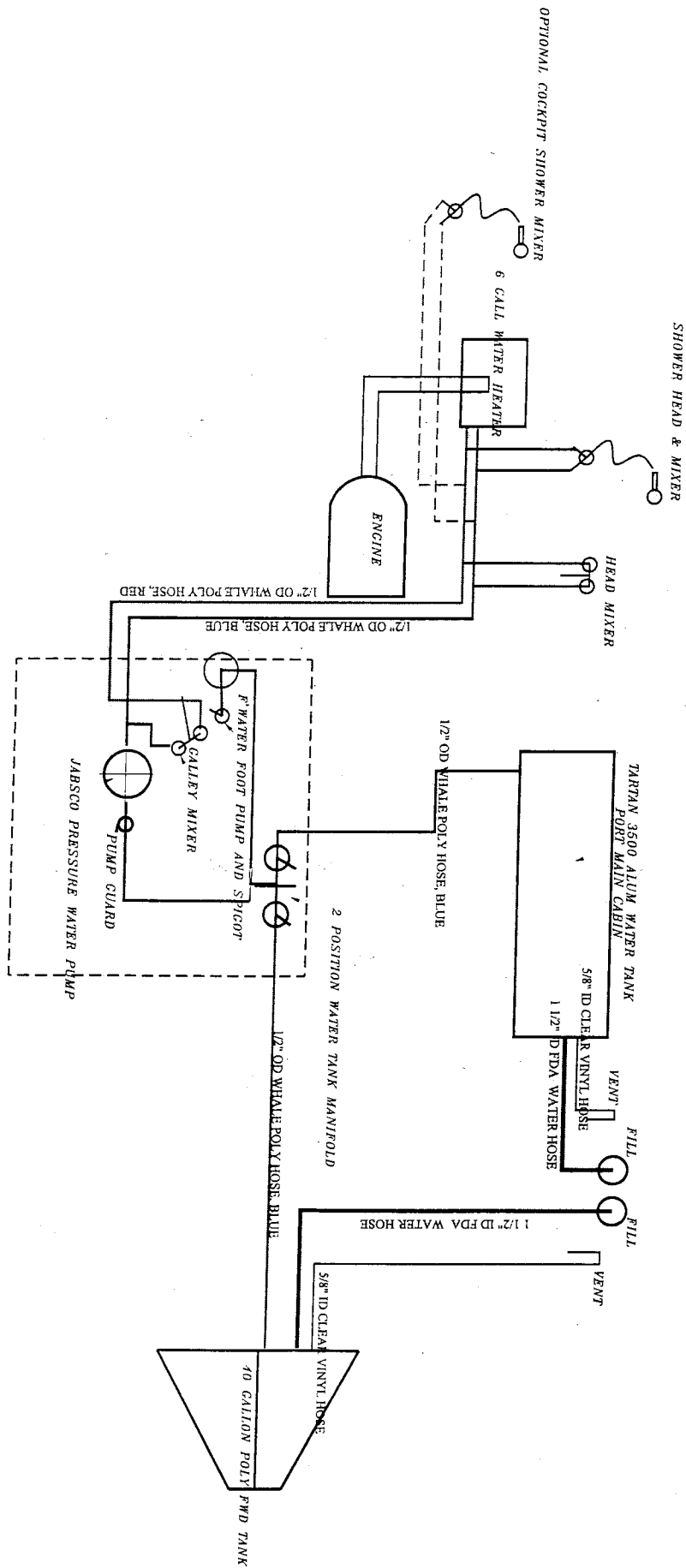
3500 Accommodation Plan

Thru Hull Locator

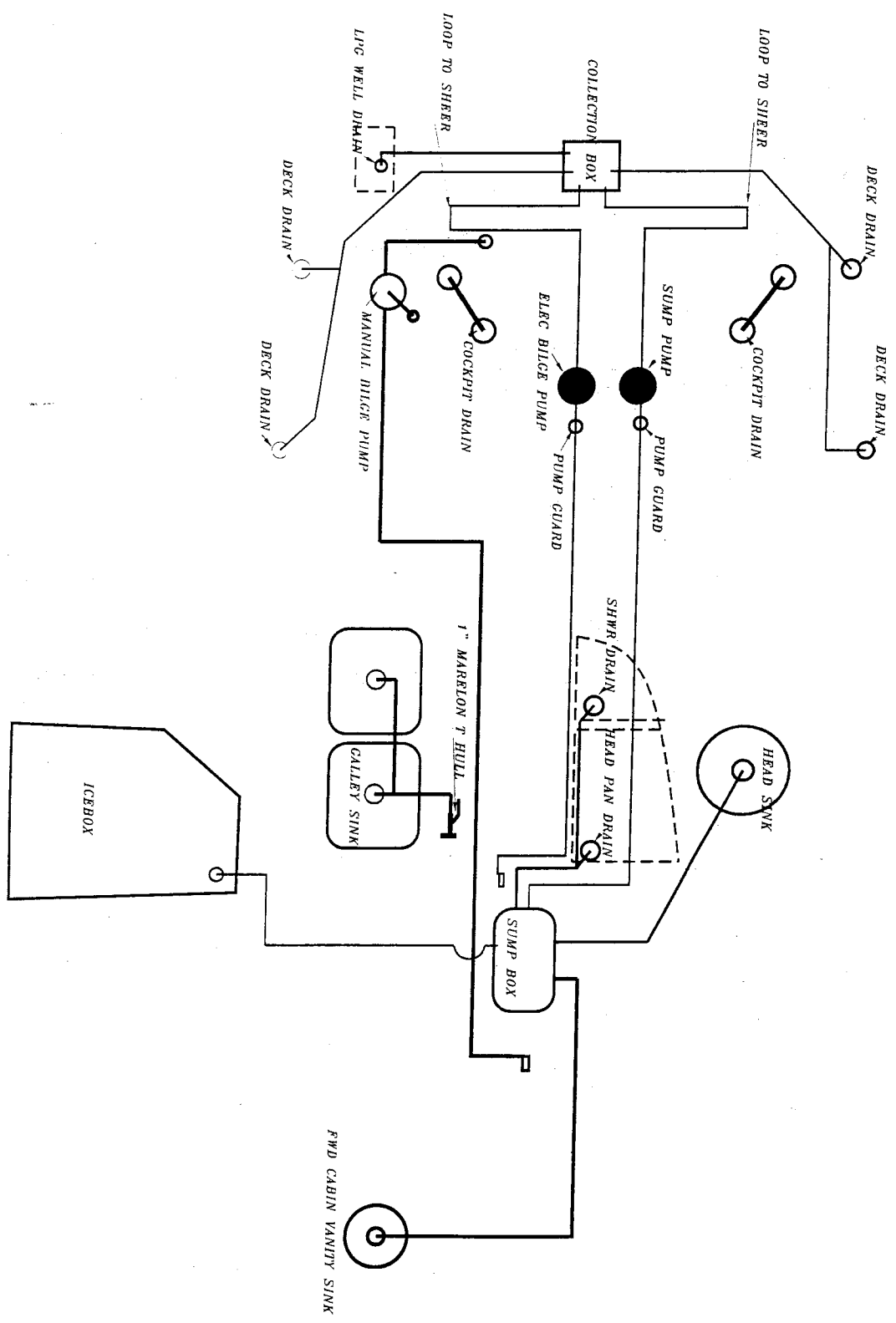




TARTAN 3500

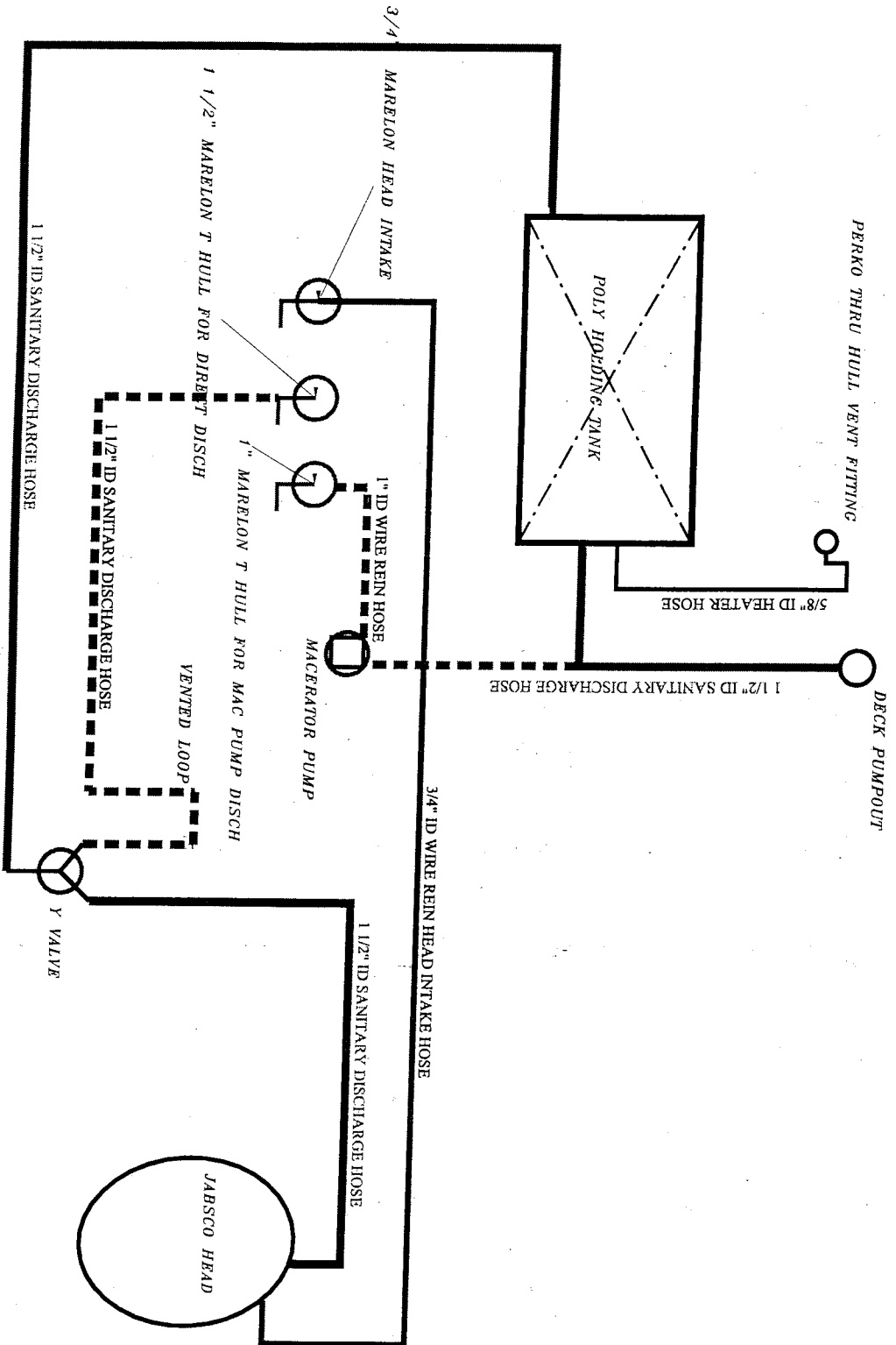


TARTAN 3500
 FRESHWATER SYSTEM
 DRWG NO 012 35 003 JUNE 10, 99 TJ
 TARTAN YACHTS, 1920 FAIRPORT NURSERY RD., FAIRPORT, OHIO 44077



TARTAN 3700
 GRAY WATER SYSTEM LAYOUT
 T JACKETT
 DRWG NO 012 37 004 AUGUST 2,99
 TARTAN YACHTS, 1920 FAIRPORT NURSERY RD., FAIRPORT, OHIO 44077

TARTAN 3500



TARTAN 3500
 BLACK WATER SYSTEM
 DRWG NO 012 35 002 JUNE 10, 99 TJ
 TARTAN YACHTS, 1920 FAIRPORT NURSERY RD., FAIRPORT, OHIO 44077

TARTAN 3500
ROLLER FURLING
FORESTAY DIMENSIONS

FOR: OFFSHORE SPARS AND
HARKEN FURLING UNIT I

STANDARD RIG: OVERALL PIN TO PIN LENGTH 48' 8 1/2"
(INCLUDING TOP TOGGLE)

HARKEN BUILD TO LENGTH: 48' 6 3/4"

CUT WIRE AT 47' 5 1/2"

STA-LOCK FITTING ONLY!

10-16-00

BY: GG

BOAT TYPE	I (FT)	J (FT)	P (FT)	E (FT)	Mast Tunnel	Boom Tunnel	Sail Feed Over Boom	Main Tack Setback	Main Tack Over Boom	Single Line Reef Exit Aft Mast	Clew Rise w/Duttl Car	Spin Trk Size
Tartan 3500	46.75	13.75	41.25	14.25	TYPE 3	TYPE 1	18°	1 3/4'	1 3/4'	6 3/16"	NONE - CLEW SLIDE REQ'D	OPTIONAL
Tartan 3700	51.75	15.00	45.25	15.00	TYPE 2	TYPE 1	18°	1 3/4'	1 3/4'	6 3/16"	NONE - CLEW SLIDE REQ'D	OPTIONAL
Tartan 3800	49.75	14.63	43.33	14.25	TYPE 3	TYPE 1	18°	1 3/4'	1 3/4'	6 3/16"	NONE - CLEW SLIDE REQ'D	OPTIONAL
Tartan 3800**					TYPE 3	TYPE 1	18°	1 3/4'	1 3/4'	6 3/16"	NONE - CLEW SLIDE REQ'D	OPTIONAL
Tartan 4100	54.00	15.00	47.75	17.00	TYPE 2	TYPE 3	18°	2-1/8'	1 3/4'	6 7/8"	1 1/2'	OPTIONAL
Tartan 4100**	57.00	15.00	50.75	18.00	TYPE 2	TYPE 3	18°	2-1/8'	1 3/4'	6 7/8"	1 1/2'	OPTIONAL
Tartan 4600	59.50	17.00	53.50	19.00	HARKEN BAIT-A	TYPE 1	NONE	0°	1 3/4'	6 7/8"	1 1/2'	NONE

** Tall Rig Option

TYPE 1 TYPE 2 TYPE 3

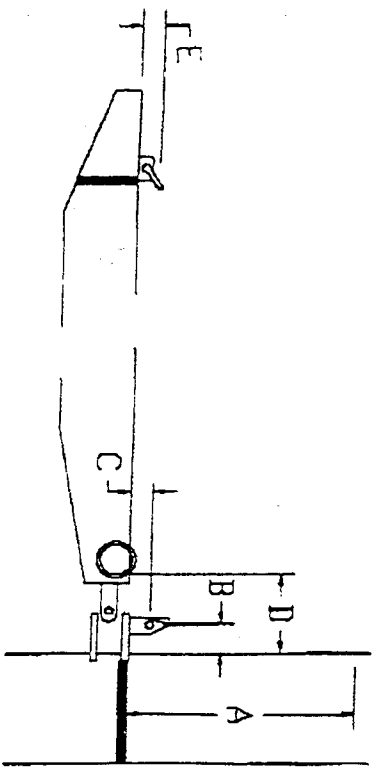
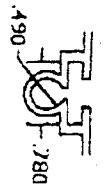
3/8" Finish Bolt Rope
3/8" Round Slugs



3/4" Flat Slides



3/8" Finish Bolt Rope
3/4" Flat Slides



REV A / SB / 2-9-98 / ADD TARTAN 3800 TALL RIG OPTION

RUDDER INSTALLATION

TYPICAL BOATS W/SLEEVE BEARINGS

