

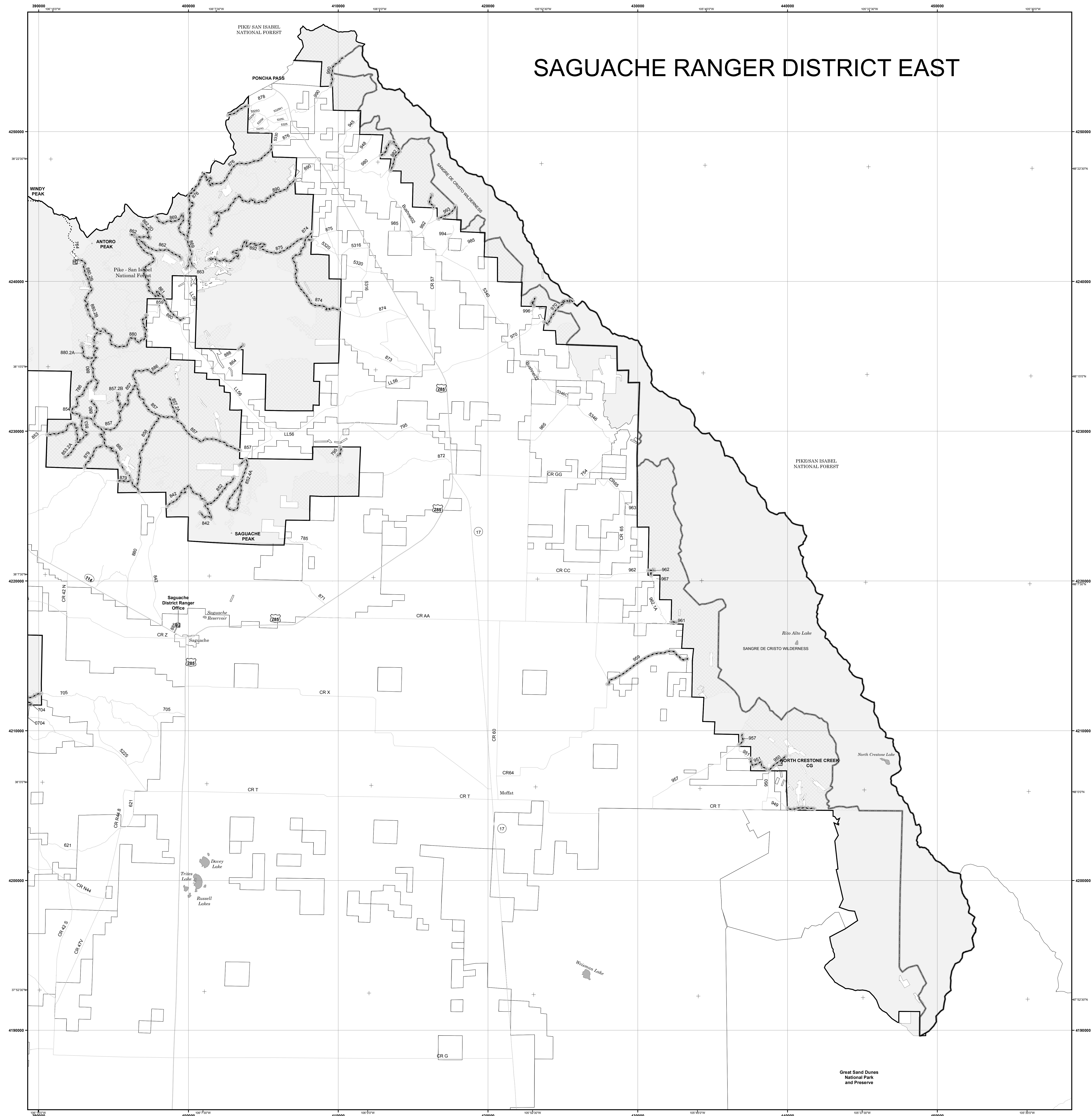
Seasonal Designations				
Route Number	Legend	Dates Allowed	Beginning Mile Post	Ending Mile Post
597, 597.1A, 619, 620, 620.1A, 621, 621.1A, 623, 651, 652, 652.1A, 667, 691, 671.1A, 672, 673, 675, 676, 678, 680, 680.2A, 680.2B, 684, 685, 686, 690.2A, 704, 705, 706.3A, 707, 707.1A, 707.1B, 707.1C, 708, 709, 710, 710.1A, 711, 715, 720, 726.2A, 726.2B, 729, 730, 730.3A, 736, 738, 739.1A, 739.1B, 740, 741, 741.1A, 741.1B, 741.1C, 744.1A, 745, 745.1A, 750, 750.2A, 750.2B, 750.2C, 759, 760, 760.2B, 760.2C, 761, 768, 770, 770.2A, 773, 775, 776, 776.1A, 776.1B, 776.1C, 776.1D, 777, 777.1A, 777.1B, 778, 780, 780.2B, 781, 782, 782.2A, 783, 784, 784.1A, 786, 787, 787.3B, 787.3C, 787.3D, 787.3E, 788, 790, 791, 793, 794, 794.2A, 795, 796, 810, 810.1C, 840.2A, 840.2B, 842, 850, 850.3A, 852, 852.4A, 853, 853.2A, 854, 855, 856, 856.1A, 857, 857.2A, 857.2B, 858, 860, 861, 862, 862.2D, 863, 869, 870, 874, 875, 876, 878, 879, 880, 880.2A, 880.2B, 881, 882, 883, 886, 888, 890, 892, 892.1A, 890, 892, 990, 992, 993, 996, 999	Roads open to all Vehicles, with Seasonal Designation	05/16/03/14	Entire	Length
650	Roads open to Highway Legal Vehicles Only, with Seasonal Designation	05/16/03/14	0.00	4.85
650	Roads open to all Vehicles, with Seasonal Designation	05/16/03/14	4.85	28.40
705	Roads open to Highway Legal Vehicles Only, with Seasonal Designation	05/16/03/14	0.00	8.90
705	Roads open to all Vehicles, with Seasonal Designation	05/16/03/14	8.90	10.30
854	Roads open to Highway Legal Vehicles Only, with Seasonal Designation	05/16/03/14	0.00	1.90
854	Roads open to all Vehicles, with Seasonal Designation	05/16/03/14	1.90	5.10
857	Roads open to Highway Legal Vehicles Only, with Seasonal Designation	05/16/03/14	0.00	2.20
857	Roads open to all Vehicles, with Seasonal Designation	05/16/03/14	2.20	9.20
870	Roads open to Highway Legal Vehicles Only, with Seasonal Designation	05/16/03/14	0.00	7.70
870	Roads open to all Vehicles, with Seasonal Designation	05/16/03/14	7.70	9.20
950	Roads open to Highway Legal Vehicles Only, with Seasonal Designation	04/01/10/15	0.00	1.20
950	Roads open to all Vehicles, with Seasonal Designation	05/16/03/14	1.20	1.36
957	Roads open to Highway Legal Vehicles Only, with Seasonal Designation	05/16/03/14	0.00	6.20
957	Roads open to all Vehicles, with Seasonal Designation	05/16/03/14	6.20	6.70
970	Roads open to Highway Legal Vehicles Only, with Seasonal Designation	05/16/03/14	0.00	4.80
970	Roads open to all Vehicles, with Seasonal Designation	05/16/03/14	4.80	7.30
41G	Roads open to Highway Legal Vehicles Only, with Seasonal Designation	05/16/03/14	0.00	10.20
41G	Roads open to all Vehicles, with Seasonal Designation	05/16/03/14	10.20	27.12

Dispersed Camping

Motor vehicle use off of designated roads for the purpose of dispersed camping is permitted for up to 300 feet from the centerline of the road, allowing the same vehicles as the road allows and the same season as the road is open. This applies to the following roads:

41G, 597, 597.1A, 619, 620, 620.1A, 621, 621.1A, 623, 650, 651, 652, 652.1A, 660, 667, 671, 672, 673, 675, 675.3P, 676, 678, 680, 680.1A, 680.2A, 680.2B, 684, 685, 690.2A, 704, 705, 706, 706.3A, 707, 707.1A, 707.1B, 707.1C, 708, 709, 710, 710.1A, 711, 716, 720, 720.2B, 720.2D, 723.1A, 726, 727, 729, 730, 730.3A, 736, 738, 738.1A, 739, 740, 740.1A, 740.1B, 740.1E, 741, 741.1A, 743, 744, 745, 745.1A, 750, 750.2A, 750.2B, 750.2C, 750.2D, 759, 760, 760.2B, 760.2C, 761, 768, 770, 770.2A, 773, 776, 776.1A, 776.1B, 776.1C, 776.1D, 777, 777.1A, 777.1B, 779, 780, 780.2B, 781, 782, 783, 784, 784.1A, 786, 787, 787.3C, 787.3D, 787.3F, 789, 790, 791, 793, 794, 794.2A, 795, 796, 810, 810.1A, 810.1C, 840.2A, 840.2B, 842, 850, 850.3A, 852, 852.4A, 853, 853.2A, 854, 855, 856, 856.1A, 857, 857.2A, 857.2B, 858, 860, 861, 862, 862.2D, 863, 869, 870, 874, 875, 876, 878, 879, 880, 880.2A, 880.2B, 881, 882, 883, 886, 888, 890, 892, 949, 950, 951, 957, 961, 962, 970, 980, 982, 990, 992, 993, 996, 999

0 0.450.9 1.8 2.7 3.6 Miles



SAGUACHE RANGER DISTRICT EAST