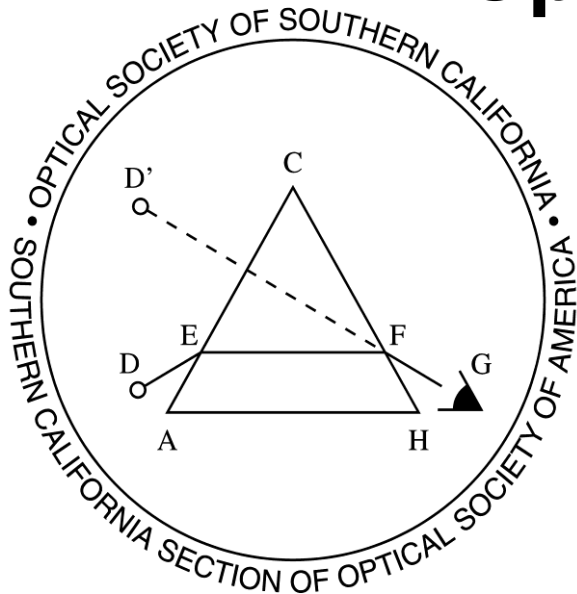


Establishment of the Optical Society of Southern California



Robert F. Cartland
OSSC President, 2009-2010

June 8, 2011

Events Predicating OSSC Formation

1916 Optical Society of America (OSA) Established,
Rochester established as the 1st & only OSA Local Section.

1945 OSA President G. R. Harrison encourages local section formation.

1946 OSA Board of Directors Empowers President & Secretary to Recognize Local Sections.

1946-1949 Fred M. Paul Appointed OSA *Assistant Secretary for Local Sections*.

1949-1953 Stanley S. Ballard Appointed *Secretary for Local Sections* (Revised Title.)

1949-1950 W. E. Williams & Dean G. R. Harrison correspond regarding the need for a Pacific Coast local optical group (Williams later served three terms as Councilor).

**1946 Detroit Becomes the 2nd OSA Local Section
Three Decades after Formation of the OSA!**

Organizational Activities

1950 Eugene Thorburn & Felix Bednarz Start Organizational Activities

Both work for Northrop Optical Laboratory in Pasadena.

1950 Henry Knoll of Los Angeles College of Optometry was working along similar lines; the three decide to work together.

February, 1951, 125 letters circulated with return postcards to assess interest; results were encouraging.

June, 1951 Organizing Committee Formed.

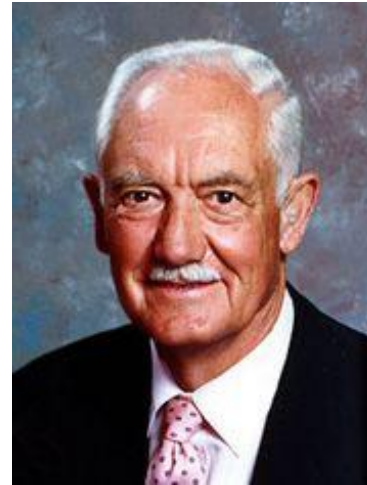
OSSC Organizing Committee



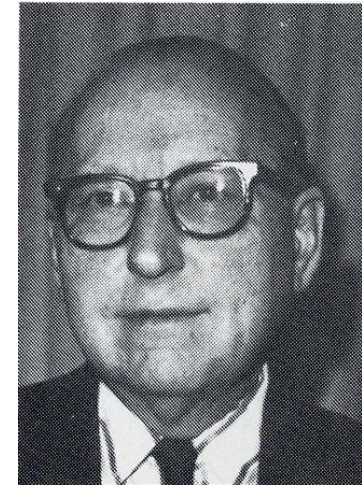
Howard Cary
Pres. 1951-52



Armin Hill
Vice Pres. 1951-52
Pres. 1952-53



Eugene Thorburn
Treas. 1951-52
Vice Pres. 1952-53
Pres 1953-54



Felix Bednarz
Secretary 1951-52

Henry A. Knoll of the Los Angeles College of Optometry

What happened to Henry Knoll?

What Happened to Henry Knoll?

262

THE AUSTRALASIAN JOURNAL OF OPTOMETRY

June 30, 1952

A BRIEF HISTORY OF "NOCTURNAL MYOPIA" AND RELATED PHENOMENA

BY

HENRY A. KNOLL

School of Optometry, The Ohio State University, Columbus, Ohio

INTRODUCTION

In the past decade studies in this country and abroad have indicated an increase in the refractive state of the eye to be associated with a reduction in the level of luminance of the test field, the so-called "nocturnal or night myopia." The refractive state of the eye is found to increase as the test field luminance decreases.

Dr. Henry A. Knoll; in 1978, Distinguished Achievement Award, New York State Optometric Association

It appears Knoll may have moved as the OSSC was forming...???

The OSSC is Established

September 26, 1951 First Meeting (90 attending)
November 7, 1951 Second Meeting (~90 attending)
 Temporary Officers Elected

President	Howard Cary	Councilors
Vice President	Armin Hill	Ira Bowen
Secretary	Felix Bednarz	W. E. Williams
Treasurer	Eugene Thorburn	Walter Wallin

Additional Meetings: December 5, 1951; January 3, 1952; February 6, 1952; March 6, 1952 (~100 attending each meeting)

March 25, 1952 OSSC Articles of Incorporation Approved by California Secretary of State

Attorney Reed Lawlor (Secretary 1952-53) Facilitated Drafting of the Articles

OSSC Becomes a Local Section

April 10, 1952 Meeting at US Navel Ordnance Test Station (China Lake)
Included Tour of Michelson Laboratory (Dedicated in 1948)

May 6, 1952 First Annual Business Meeting

Officers Elected

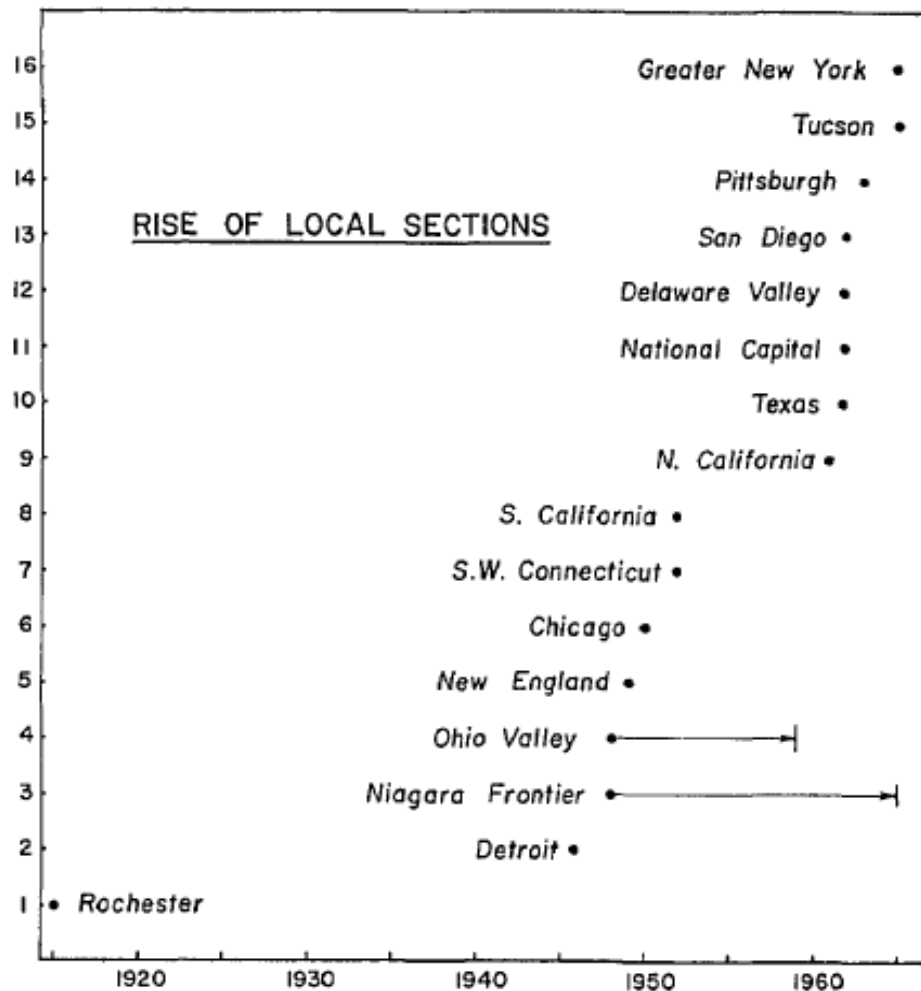
President	Armin Hill	Councilors (Same as 1951)
Vice President	Eugene Thorburn	Ira Bowen
Secretary	Reed C Lawlor	W. E. Williams
Treasurer	Michael Stickney	Walter Wallin
Program Chairman	J. W. Kemp (appointed)	

June 4, 1952 OSA Recognizes OSSC as a Local Section

June 11, 1952 Meeting held at Corona Lab of Nat. Bureau of Standards
jointly with Inst. Society of America (Cal Section) (~200 attending)

July 17, 1952 Meeting of Officers, Directors & Committee Chairs
Formal Installation of OSSC as an OSA Local Section!

OSA Local Sections: 1916 to 1966



1916 Rochester Section
(Same Year OSA Started)

1946 -1952 7 New Sections

1961-1965 8 New Sections
(2 withdrew)

1966 14 Local Sections
(OSA is 50 years old)

HISTORY OF THE OPTICAL SOCIETY OF AMERICA,
1916-1966, JOSA, Vol. 56, Issue 3, pp. 273-340 (1966)

OSA Support of Local Sections



ROF

STANLEY S. BALLARD

Secretary for Local Sections
when OSSC was established



Howard Cary, last OSA
Secretary for Local Sections

Howard Cary was both the *first* President of the OSSC and the *last* OSA Secretary for Local Sections.

1946-1962 Local Sections Supported by Appointed Volunteers including: Fred M. Paul, Stanley S. Ballard, Norman Barnes, W. Lewis Hyde and Howard Cary

1959 Mary E. Warga Appointed first Executive Secretary of OSA, actively encourages formation of local sections (1961-1965 Eight new Local Sections established)

1962 Howard Cary ends term as the *last* Secretary for Local Sections

US Local Sections: 1966 to 2011

Currently Recognized US Local Sections Established Since 1966

Local Section	Established
Boulder, CO	1968
Huntsville, AL	1969
Minnesota	1973
St. Louis, MO	1984
Ann Arbor, MI	Since at Least 1987
Tri-State, PA	2002
Charlotte, NC	Since At least 2003
Reno Tahoe, NV	2004
Western Penn	Since at Least 2006

1966 There were 14 Local Sections

1966-2011 9 New US Local Sections
(Currently Recognized)

2011 7 of original 14 became inactive: Detroit,
Texas, Delaware Valley, San Diego, Tucson,
Greater New York and Pittsburg

Net increase of only 2 US Local Sections since
1966! The current total is 16.

Compared with over 60 US Student Chapters!

*Data does not include Sections that formed and became inactive
since 1966 (E.G. Columbia, OR; Houston, TX)*

Reference: www.osa.org



OSSC is the 5th Oldest Recognized Local Section

International Local Sections

Currently Recognized Local Sections *Outside* the US

Local Section	Established
Quebec, Canada	1983
Taiwan	1999
Thailand	2002
Southwest Ontario, Canada	Since at least 2003
Latvia	Since at least 2005
Kharkiv, Ukraine	Since at least 2008
Singapore	Since at least 2008

Reference: www.osa.org

OSA Currently Recognizes 7 Local Sections *Outside* the US

A 2008 article in OPN indicates there were 10 Sections outside the US; 3 Sections, including Sections in India and Japan, are no longer recognized

Total number of OSA Local Sections is 23 (16 US and 7 outside the US).

The number of Local Sections is modest considering there are currently over 200 recognized OSA Student Chapters!

Ref: Howard, John N, OSA Politics Get Local, OPN, February, 2008

Southern California is fortunate to have a Local Section that has been continuously active for 60 years!

Corporate Sponsors

Abbott Medical Optics
Advanced Pellicle Technology
Aerospace Corporation
Aerotech
Alson E. Hatheway Inc.
ASU School of Earth & Space
Exploration
A W I Industries
Balboa Scientific
Bausch + Lomb Surgical
Britek Laser Optics
Cal Poly Pomona
Cimarron Optical Consulting
Coastline Optics
Curt Deckert Associates
CVI Optical Components
Cylinder Optics
Davidson Optronics
Davis Wright Tremaine, LLP
Del Mar Photonics
Diverse Optics (formerly Qioptiq)
DMK Engineering
Doushkina Optics
DRS Sensors and Targeting Systems
Exotic Electro-Optics

Hardin Optical Company
HinesLab
Incubic Management
Infinite Optics Incorporated
InnovativeTek, Inc.
Irvine Valley College, ATEP Campus
L-3 SSG-Tinsley
L.A. Gauge Company
LightWorks Optics
Mark Optics
Mendez R & D Associates
Mindrum Precision
MRI Research Triangle Park
Newport Corporation
Newport Industrial Glass
Newport Thin Film Laboratory
NiPro Optics
Northrop Grumman Aerospace
Systems
Ohara Corporation
Optimum Optical Systems
Optics1
Phaze-9
PI (Physik Instrumente) L.P.
Precision Applied Products
Precision Glass & Optics

Precision Optical
Prismatic Magic Laser Programs
Raytheon Elcan Optical Technologies
Raytheon Missile Systems
Raytheon Space and Airborne Systems
Reynard Corporation
Ricoh Innovations
Rolyn Optics Company
Schott North America
Silicon Lightwave Technology
SpaceX
Spectrum Scientific
Synopsys (formerly ORA)
Tustin Thin Films
UCI Beall Center for Art + Technology
UCI Laser Spectroscopy Facility
UCLA Ozcan Research Group
UCLA Photonics Laboratory
USC Institute for Creative Technologies
UCSD Ultrafast & Nanoscale Optics
Group
Western Photonics Technology
Z C & R, Inc.
Zygo Corporation
Zygo Optical Systems

Thanks for your generous support!