

NEW MEMBERS RESOURCE GUIDE

Dear New NORFMA Member,

Welcome to our organization!

The Northwest Regional Floodplain Managers Association's mission is to promote sound floodplain management strategies throughout the Pacific Northwest by providing training, networking opportunities, and forums for discussions of issues in the field of floodplain management.

As most of you know, or are quickly learning, the floodplain management field is deep and sometimes murky with a lot of agencies involved. Through NORFMA you can connect with other professionals at all levels of experience. We are a totally volunteer organization and there are many ways for you to get involved. This resource guide summarizes important contacts, programs, links, and services that we currently support. If you have ideas or questions feel free to reach out to a NORFMA board member or other listed contact.

Sincerely,

Your NORFMA Board



Snoqualmie River Valley, 2010 (coastalresilience.org)

In This Guide

- NORFMA Resources
- Hot Topics
- ASFPM
- CFM
- FEMA Resources
- CRS
- Important Contacts
- Training



Yakima River Valley (floodplainsbydesign.org)

NORFMA WEBSITE

The NORFMA website can be found at <http://norfma.org/>. The website is frequently updated with valuable information for members, including:

NORFMA Board Members Contact Info

News & Events Calendar

- New Members Forums — a chance to meet new and old members and learn about local floodplain issues. Refreshments provided!
 - ◆ Held regularly throughout the NORFMA region
- **The Annual NORFMA Conference**
 - ◆ **Boise, ID—September 2019**
- State Mini-Conferences
- HEC-RAS, FEMA, BiOP and other local training opportunities
- CRS Users Group Quarterly Meetings

NORFMA Committees

- CRS Users Group
- Sediment Management Issues Working Group
- Conference Committee
- Membership Committee and Nominating Sub-Committee
- Policy Committee
- Training Committee
- ASFPM Chapter Committee

Important Links

- Climate, Weather, and Flow Data
- State Contacts
- Related Organizations

Conference Archives

- Presentations from 2013-2017

Job Listings

HOT TOPICS

NFIP BiOp

Both Washington (Puget Sound region) and Oregon are subject to a Biological Opinion (BiOp) related to the implementation of the NFIP. More information can be found at:

<https://www.fema.gov/national-flood-insurance-program-endangered-species-act>



Washington State Floodplains by Design program

Floodplain by Design is a grant program that funds multi-benefit projects that reduce both flood hazards and restore natural functions of floodplains. The program is funded through legislative approval for each biennium. More information is available on the Department of Ecology website <https://ecology.wa.gov/About-us/How-we-operate/Grants-loans/Find-a-grant-or-loan/Floodplains-by-design> and on the partnership website <http://www.floodplainsbydesign.org/>.



Puyallup (floodplainsbydesign.org)

ASFPM



The Association of State Floodplain Managers (ASFPM) is

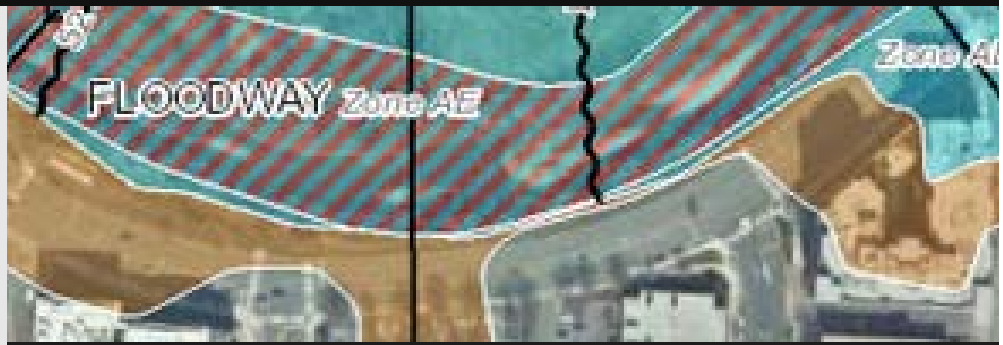
the national organization for floodplain managers, and provides education, policy, and guidance on regional and national issues. ASFPM also manages the Certified Floodplain Manager program. <https://www.floods.org/>

The ASFPM Annual National Conference is held in the spring or summer. Future conferences include:

- Cleveland, Ohio – May 2019
- Fort Worth, Texas – June 2020

Certified Floodplain Manager

Certified Floodplain Manager (CFM) status is achieved through a certification program that includes an exam. The exam is offered locally each year at the end of the NORFMA conference and on other occasions throughout the year. The ASFPM website provides more information about the exam, study guides, exam dates, and certification maintenance requirements.



FEMA MSC

FEMA RESOURCES

FEMA Flood Map Service Center

The FEMA Flood Map Service Center (MSC) is the official public source for flood hazard information produced in support of the National Flood Insurance Program (NFIP). Use the MSC to find current and historic FIRMs, Letters of Map Change, Flood Insurance Studies, and other information. <http://msc.fema.gov/portal>

The FEMA Map Information eXchange (FMIX) is a service FEMA offers to provide the public with mapping questions and information. https://www.floodmaps.fema.gov/fhm/fmx_main.html

FEMA Guidance Documents

Floodplain Management Requirements – A Study Guide and Desk Reference for Local Officials (FEMA 480): This publication can be used as a study guide for the CFM exam, and can be used as a reference for local officials administering floodplain management regulations. <https://www.fema.gov/media-library/assets/documents/902>

Technical Bulletins: The technical bulletins provide guidance on complying with NFIP building performance standards, including openings in foundation walls, flood damage-resistant materials, non-residential floodproofing, elevators, below grade parking, wet floodproofing, fill, and crawlspace construction. For coastal areas the bulletins address obstructions, breakaway walls, and corrosion. <https://www.fema.gov/floodplain-management/nfip-technical-bulletins>

Substantial Improvement/Damage Desk Reference (FEMA P-758) <https://www.fema.gov/media-library/assets/documents/18562>

Other Floodplain Management Publications and Resources <https://www.fema.gov/floodplain-management-publications>

STARR II Team Region X

The Strategic Alliance for Risk Reduction (STARR II) is a joint venture comprised of Atkins, Stantec, and Dewberry. STARR II helps FEMA with services including DFIRM production, outreach, training, hazard identification, and mitigation planning, among others. <http://j.mp/starrx>

STARR II activities in FEMA Region X include managing the Region X Service Center, which can help local officials and stakeholders with technical, training, mitigation, and mapping questions. The help desk can be contacted at RegionXHelpDesk@starr-team.com or 425-329-3699.

COMMUNITY RATING SYSTEM

The Community Rating System provides communities an incentive to implement floodplain management activities that reduce the risk of flooding and damages by lowering flood insurance premiums by 5 to 45 percent. For more information, visit the CRS Resources website: <http://crsresources.org/>. The CRS webinar series provides twice monthly training session on basic and more advanced CRS topics. <https://crsresources.org/training>

CRS Users Groups meets regularly throughout the year. In the NORFMA region there are four users groups: NORFMA, King County, North Oregon, and South Oregon. For more information and to contact group leaders visit: <https://crsresources.org/crs-users-groups/>

Contact your CRS Specialists for more information about the program. For Washington, Oregon, Alaska, and North Idaho contact Marlene Jacobs, mjacobs@iso.com, and for South Idaho contact Constance Lake, clake@iso.com. For additional contact info, visit: <https://crsresources.org/100-2/>.

NEWSLETTERS

ASFPM News & Views: <https://www.floods.org/index.asp?menuID=294>

ASFPM Chapter Newsletter: <http://www.floods.org/index.asp?menuID=266>

STARR II Region X Newsletter, with NORFMA News: <http://j.mp/starrxnews>

NFIP/CRS Update Newsletter: <https://crsresources.org/newsletter/>

IMPORTANT CONTACTS

Washington Department of Ecology Floodplain Specialists

<https://ecology.wa.gov/Water-Shorelines/Shoreline-coastal-management/Hazards/Floods-floodplain-planning>

State NFIP Coordinator: David Radabaugh, david.radabaugh@ecy.wa.gov

Idaho Department of Water Resources

<https://www.idwr.idaho.gov/floods/contacts.html>

State NFIP Coordinator: Maureen O'Shea, maureen.oshea@idwr.idaho.gov

Oregon Department of Land Conservation and Development

<http://www.oregon.gov/LCD/HAZ/pages/index.aspx>

State NFIP Coordinator: Celinda Adair, celinda.adair@state.or.us

Alaska Division of Community and Regional Affairs

<https://www.commerce.alaska.gov/web/dcra/PlanningLandManagement/FloodplainManagement.aspx>

State NFIP Coordinator: Jimmy Smith, jimmy.smith@alaska.gov

FEMA Region X Floodplain Management Specialists

Roxanne Pilkenton, roxanne.reale-pilkenton@fema.dhs.gov

Karen Wood-McGuinness, karen.wood-mcguinness@fema.dhs.gov

FEMA Region X Flood Insurance Program Specialist

Scott Van Hoff, scott.vanhoff@fema.dhs.gov

TRAINING

Emergency Management Institute

The Emergency Management Institute is located in Emmitsburg, Maryland and offers courses and programs related to emergency management training, including floodplain management, Community Rating System, and HAZUS. EMI courses are offered for no charge, and students are provided dormitory housing and travel reimbursement. <https://training.fema.gov/emi.aspx>

Planning Information Exchange

ASFPM and the American Planning Association conduct quarterly webinars for practitioners on hazard mitigation planning and its connections with recovery planning and preparedness. Webinars are eligible for both CFM and AICP continuing maintenance credits.

<https://planning.org/nationalcenters/hazards/planninginformationexchange/>

STARR II

STARR II provides online training for many topics, including floodplain permitting, determining base flood elevations, elevation certificates, building inspections, and NFIP basics. Many trainings are eligible for CFM continuing maintenance credits.

Search and register for upcoming trainings on the STARR II Team calendar: <http://j.mp/starronlinetraining>